

Interactive limit states design of steel frames

Autor(en): **Pesquera, Carlos I. / McGuire, William**

Objekttyp: **Article**

Zeitschrift: **IABSE congress report = Rapport du congrès AIPC = IVBH
Kongressbericht**

Band (Jahr): **12 (1984)**

PDF erstellt am: **25.05.2024**

Persistenter Link: <https://doi.org/10.5169/seals-12155>

Nutzungsbedingungen

Die ETH-Bibliothek ist Anbieterin der digitalisierten Zeitschriften. Sie besitzt keine Urheberrechte an den Inhalten der Zeitschriften. Die Rechte liegen in der Regel bei den Herausgebern.

Die auf der Plattform e-periodica veröffentlichten Dokumente stehen für nicht-kommerzielle Zwecke in Lehre und Forschung sowie für die private Nutzung frei zur Verfügung. Einzelne Dateien oder Ausdrucke aus diesem Angebot können zusammen mit diesen Nutzungsbedingungen und den korrekten Herkunftsbezeichnungen weitergegeben werden.

Das Veröffentlichen von Bildern in Print- und Online-Publikationen ist nur mit vorheriger Genehmigung der Rechteinhaber erlaubt. Die systematische Speicherung von Teilen des elektronischen Angebots auf anderen Servern bedarf ebenfalls des schriftlichen Einverständnisses der Rechteinhaber.

Haftungsausschluss

Alle Angaben erfolgen ohne Gewähr für Vollständigkeit oder Richtigkeit. Es wird keine Haftung übernommen für Schäden durch die Verwendung von Informationen aus diesem Online-Angebot oder durch das Fehlen von Informationen. Dies gilt auch für Inhalte Dritter, die über dieses Angebot zugänglich sind.

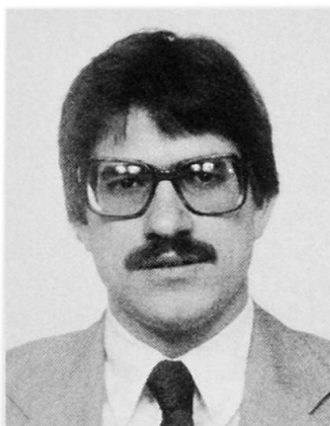
Interactive Limit States Design of Steel Frames

Calcul interactif, à l'état limite, de cadres métalliques

Interaktive Bruchbemessung von Stahlrahmen

Carlos I. PESQUERA

Syst. Dev. Eng.
3D/EYE, Inc.
Ithaca, NY, USA



Carlos I. Pesquera, born in 1956, in San Juan, Puerto Rico, obtained his Civil Engineering degree at the University of P.R. In January of 1984, he received a Ph.D. in Structural Engineering from Cornell University. Since August of 1983 he has been working on the development of CAD systems for structural engineering applications.

William McGUIRE

Prof. of Struct. Eng.
Cornell University
Ithaca, NY, USA



William McGuire, born in 1920, received his BSCE degree from Bucknell University and his MCE degree from Cornell University. He is now on the faculty of Cornell University.

SUMMARY

A computer-aided approach for the interactive limit-states design of steel frames is presented. A flexible scheme permits the engineer to define the design equations interactively. Both first- and second-order elastic analyses can be employed to predict the response of the structure to the applied loads.

RESUME

Une méthode de traitement assisté sur ordinateur pour la conception et l'analyse de structures en acier est présentée, pour les états limites. La méthode permet à l'ingénieur de définir les équations de manière interactive. L'analyse des forces élastiques du premier et du deuxième ordre peut être utilisée afin de prédire le comportement d'une structure à la charge qui lui est appliquée.

ZUSAMMENFASSUNG

Eine interaktive, computerunterstützte Methode für die Bruchbemessung von Stahlrahmenkonstruktionen unter extremen Bedingungen wird aufgezeigt. Ein anpassungsfähiges Schema erlaubt es dem Ingenieur, die Entwurfskriterien für gegebene Anforderungen zu bestimmen. Elastische Analysen sowohl erster als auch zweiter Ordnung werden angewendet, um die Reaktion der Konstruktion auf die Belastungen vorauszusagen.



1. INTRODUCTION

The authors and their colleagues have developed an interactive computer aided design system for three dimensional steel frame structures [References 1-4]. The system accommodates design by either a limit states, code related approach [Ref. 5], or through code independent methods that involve the use of geometric and material nonlinear analysis. In this paper the code based method is discussed. The assumptions and limitations are listed, some of the novel features of the system are described, and an illustrative example is presented. The use of full nonlinear analysis is also illustrated in the example.

2. FEATURES, ASSUMPTIONS, LIMITATIONS

In a typical problem, the structure geometry, boundary conditions, trial member sizes, and loads are first specified in the problem definition module -- an interactive graphics "preprocessor" [Ref. 2]. The load combinations for the limit states under consideration are then defined, the type of analysis to be used is selected, and the analysis is performed. The computer then evaluates the trial design by applying the relevant code equations to each member. Graphical displays aid in interpreting the results and the behavior of the structure. Successive iterations of re-design and analysis can be performed either automatically or under the direct, interactive control of the engineer until a system with well balanced strength properties is obtained. An additional feature, which is described in References 1 & 4 but not discussed here, is an optimality criterion based procedure for satisfying displacement limits.

In the present state of the development of the system all members are assumed to be compact, lateral buckling is prevented, and all connections are rigid. Work is in progress to remove these limitations.

3. STRENGTH DESIGN PROCEDURES

Figure 1 is a flow chart of the code related procedure for meeting strength requirements. The design algorithm can be summarized as follows: 1) An initial set of member sizes (a "design vector") is selected based on experience or rough preliminary calculations. 2) All the design rules from the applicable specification are defined as design equations. 3) For a single load combination, the structure is analyzed to obtain internal member forces and joint displacements. 4) The response of the structure to this load combination is evaluated. If the response is not satisfactory a new design is generated, either automatically or interactively. In the former case the program selects the lightest members that satisfy the controlling design equations. In the other option, the user selects the members. The results of the new design are stored in the "next design vector" as described in Section 3.1 below. 5) Steps 3 and 4 are repeated for each load combination. A design is considered feasible when for all possible load combinations the structural specifications are not violated. The ultimate goal is to find for each group of members an acceptable section with the least possible weight. After the last load combination is considered, a new design iteration is begun only if changes have occurred in the design vector since the previous iteration.

The design procedure is not a fully automatic one. At all times the engineer has control over the path to be followed. He can exit the loop at any time to modify the structure or to change any of the parameters that control the design and analysis routines.

In the following subsections each of the major components of the method are described.

3.1 Design Vectors

The term "design vector" is used to describe the list of member sizes employed at any stage of the process. It is the vector that is progressively refined from the initial to the final design. In the manual, i.e., interactive option, a member is selected or changed by pointing to an item on a displayed list of conventional designations (W18x40, W36x300, etc.) and then pointing to the member on a line diagram of the frame. The properties of that section, which are in the system database, are assigned to that member by the program.

At any stage of the process, three design vectors are stored: the "previous", "current", and "next" vectors. The current vector lists the members whose properties are being used at the current stage of the program in all calculations. The new trial design suggested by the computer or interactively by the user is stored as the next vector. This multiple, progressively updated, record enables the designer to recover a design if a subsequent review of the new trial design produces less satisfactory results than the current one.

3.2 Design Equations

One aim is to make these design tools applicable to a wide range of structural design codes. This is a difficult task since at present there is no uniform format for codes. It is for this reason that the scope of the elastic analysis based procedures has been limited to codes employing the limit states design philosophy. The format of the design equations in this type of code can be given rather generally as:

$$\frac{\text{calculated load effect at factored loads, } (S_i)}{\text{estimated resistance to factored load effect, } (R_i)} \leq 1 \quad (1)$$

To achieve a degree of code independence the design procedure has been implemented in the following way: 1) The user is afforded full control over the specification of load and resistance factors. 2) In cases in which different codes specify different formulas for the calculation of resistance to a given load effect, for example, to direct compression, several commonly used formulas are included in the program to give the designer a choice. 3) To accommodate the use of interaction equations commonly found in codes, the scheme described below has been used to define design equations that combine different load effects.

It is possible to define equations of the following type:

$$g = \sum_{i=1}^7 \delta_i C_i \left(\frac{S_i}{R_i} \right)^{e_i} \leq \bar{g} \quad (2)$$

in which δ_i is 1 or 0 depending on whether the i^{th} load effect is active or inactive, C_i is a coefficient, e_i is an exponent, \bar{g} is a function of the load effects and member resistance, and \bar{g} is the limit imposed on the design equation (usually unity). In cases in which a structural member is subjected to two or more load effects that cause direct stresses in the same direction, structural specifications prescribe so-called "interaction equations" for design. This type of equation can be defined by activating the corresponding load effects in eqn. 2 [1]. However, to accommodate the definition of interaction equations that consider the stability of individual members it is necessary to modify eqn. 2 since the bending terms in such equations need to include



both an amplification factor and an equivalent moment factor.

Figure 2 shows the menu page used for the interactive definition of the design equations. The equation displayed is an interaction equation for compression and bending. The load effects that are active are indicated by a double line box. This and the design equations to be considered in the subsequent examples are taken from Ref. [5].

3.3 Load Combinations

To verify a limit state it is generally necessary to check the adequacy of the structure for more than one load combination. The load combinations to be considered in the example to follow are those given in Ref. [5].

3.4 Analysis

The object of the analysis is to calculate the internal member forces and moments due to the applied loads. The applied loads can be either the specified service loads or factored loads, depending on the limit state under consideration. Most modern specification contain provisions for the use of first- or second-order analysis to estimate the response of the structure. The difference in the application of specification clauses in these two cases is often restricted to the consideration of stability effects. For example, if the second-order effects are taken into account directly in the analysis, the Canadian Limit States Design Specification allows the use of effective length factors and uniform bending coefficients calculated on the assumption that sideway is prevented.

Conventional stiffness method procedures are employed to calculate member forces when a first-order elastic analysis is requested. To solve for the structural response for the second and subsequent load combinations, advantage is taken of the already decomposed structure stiffness matrix from the first load combination.

The column effective length factors required when the design is based on first-order elastic analysis are computed by performing a separate elastic critical load analysis of planar bents in the structure. The reference loads used in the elastic critical load analysis of the example to be presented correspond to specified gravity loads. The effective length factors are calculated from the member axial loads at the elastic critical load [1].

For second-order analysis either iterative or incremental procedures can be employed to solve the finite element equilibrium equation. The iterative procedures provide a more accurate approach to equilibrium at the expense of computational effort. Although the incremental procedures are approximate, it has been found that for steel frames of regular geometry and loading, results accurate for design can be obtained even if steps of 10 to 20% of the applied loads are specified. Unless otherwise specified, the incremental predictor-corrector method [3] will be used in all subsequent analyses which consider elastic second-order effects.

3.5 Design Evaluation

There are two basic ways to evaluate a design. One is based on the overall behavior of the structure and the other concentrates on the performance of individual members. Several tools have been implemented which, in combination with engineering judgment, enable the designer to decide when a trial design is adequate.

To aid in the evaluation of a design based on overall behavior, the tools implemented include the display of the deflected shape of the structure, force and

and moment diagrams, and plots of the total or story lateral drift.

The performance of individual members is evaluated through the design equations. The objective is to identify those members that are either over- or under-designed. The graphical technique use for this purpose identifies those members for which the left hand side of the design equations give values between two limits specified by the designer. Figure 3 shows an image displayed for this purpose. The information in the upper right of the figure shows that the maximum value for the left hand side of the equation under consideration is 1.195. In this illustration the designer is looking for those members for which the design equation is violated, i.e., those members for which the value of the left hand side of the design equation is greater than 1.0. As an aid to detecting such conditions, the members which possess values in this – or any other – specified range are shown in dashed lines on the displayed image of the frame.

3.6 Re-Design

If the design evaluation process indicates that only a few members require modification it is probably best to select new trial sections based on judgment. The selection of new sections can then be performed interactively by replacing the current section by another of the 210 standard sections in the database. When a substantial number of members requires modification, the use of this "manual" approach becomes impractical and the automatic procedure is indicated.

The automatic re-design procedure suggests to the designer a new design vector for which the design equations are satisfied. The term "suggest" is used because the designer can modify the selected sections if a suggested section is impractical or if it violates functional requirements, such as a rule that the column depth at a given level not be greater than the depth of the columns at lower levels. A search procedure has been implemented to select from the the available sections the one that meets the design equations and any user specified depth limit [1]. When the designer is satisfied with the new trial list of sections, the vectors are updated.

4. EXAMPLE

The fictitious nonsymmetric three-dimensional frame shown in Fig. 4 has been selected to demonstrate the application of the strength design procedure. A plan view of the structure, its material properties, and the specified service loads are shown in Fig. 4b. The bents spanning in the E-W direction are identified by a letter, while those spanning in the N-S direction are identified by a number.

The structure is designed for three possible load combinations, gravity loads acting alone and gravity loads plus the full wind load acting in either the West-East or the South-North directions.

In this example live load reduction provisions are not explicitly considered. To compensate for this, the live load specified in Fig. 4b is less than the value one would normally specify for a structure of this type. In addition, placement of the live load in the most unfavorable locations (pattern loading) for individual members has not been considered.

Two alternative designs are obtained for the structure. The first, Design I, is based on the use of three dimensional second-order elastic analysis. The second design, Design II, is obtained by using three dimensional first-order elastic analysis and sidesway based effective length factors to compensate for the neglected second-order effects.

The design equations used in this example are those specified in the Canadian Limits States Design Specification. The load factors and the load combinations



considered are also taken from Ref. [5]. Following conventional practice, the members in the structure are grouped to satisfy certain symmetry and functional requirements. The most critical member in a group governs the design of all the members in that group. A total of 64 members groups is used. Member groups 1-34 are beams, and the remainder are columns. Details of the grouping arrangement can be found in Ref. [1]. For the initial trial design, all columns were arbitrarily defined as W14x90 and the beams as W18x50. An upper limit of 61.0 cm is specified for the beams depths, while a maximum depth of 35.6 cm is prescribed for the columns. In both cases a minimum depth of 15.2 cm is designated. The distance between floors is 3.65 m.

The final sections obtained by the two design procedures are given in Table 1. By considering the second-order effects directly in the analysis, one attains a steel frame weight about 6% less than that obtained with the conventional elastic design procedure.

A comparison of the two designs shows that the beam sections in Design I are generally heavier than their counterparts in Design II. This is due to the consideration of second-order moments in the first design. The column sections, however, are generally smaller in Design I because inclusion of the second-order moments in their design does not completely offset the reduction in columns sizes achieved by assuming effective length factors of unity. The ratio of total beam weight in Design I to that of Design II is 1.08, and the analogous ratio for columns is 0.80.

As an extension to this example and an illustration of the capabilities of this system for full nonlinear (geometric and material) analysis Designs I and II have been analyzed to collapse for each of the load combinations considered. A full report of the results can be found in Reference [1]. In summary, all the collapse load factors computed exceed the minimum required. For instance, the collapse load factors for the most critical combined load case (wind + gravity) are 1.51 and 1.59 for Designs I and II, respectively.

5. SUMMARY

This paper has presented an approach to the interactive limit states design of steel frames. Computerized design aids are provided that enable an engineer to systematically and efficiently go through the iterative process typical of structural design. At all times the engineer has the option to override the suggestions made by the computer. The application of these tools to the design of one three-dimensional structure shows a 6% saving of steel through consideration of second order effects in the analysis.

REFERENCES

1. PESQUERA, C. I., "Integrated Analysis and Design of Steel Frames with Interactive Computer Graphics," Ph.D. Thesis, Department of Structural Engineering, Cornell University, January 1984.
2. PESQUERA, C. I., McGUIRE, W., and ABEL, J. F., "Interactive Graphical Preprocessing of Three-Dimensional Framed Structures," Computers and Structures, Vol. 17, 1983, pp. 1-12.
3. ORBISON, J.G., "Nonlinear Static Analysis of Three-Dimensional Frames," Ph.D. Thesis, Department of Structural Engineering, Cornell University, May 1982.
4. PESQUERA, C. I., and McGUIRE, W., "Design of Steel Frames with Interactive

Computer Graphics," Instability and Plastic Collapse of Steel Structures, Granada Publishing Ltd., London, 1983.

5. Limit States Design Steel Manual, First Edition, Canadian Institute of Steel Construction, Toronto, Ontario, 1977.

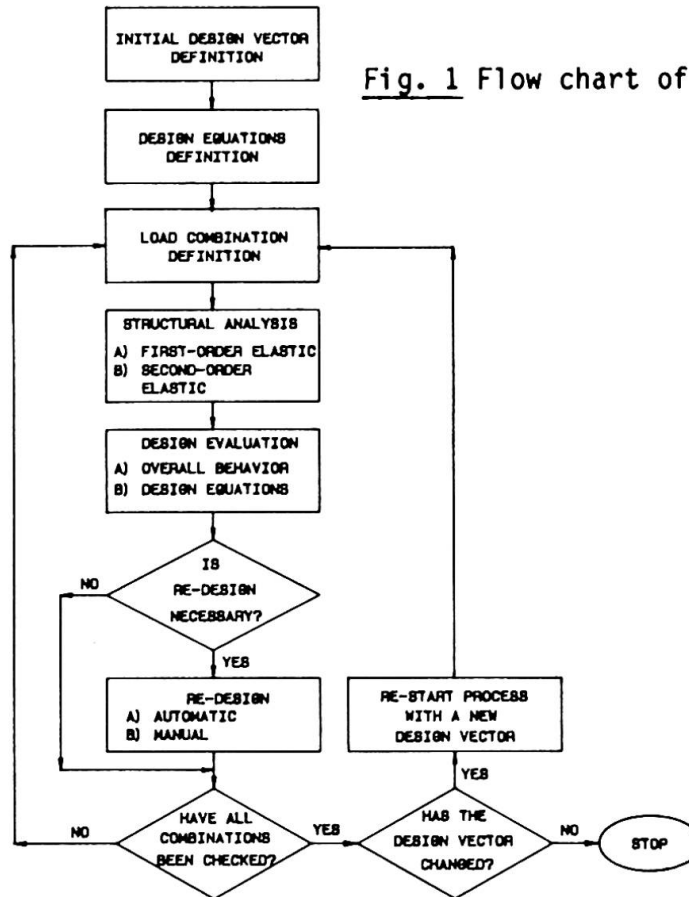


Fig. 1 Flow chart of design procedures.

10 STORY L SHAPED FRAME 3-FEB-84

DESIGN EQUATIONS

LOAD EFFECT	TENSION	COMPRES	SHEAR Y	SHEAR Z	TORSION	MOMENT Y	MOMENT Z
COEFFICIENT	1.000	1.000	1.000	1.000	1.000	1.000	1.000
EXPONENT	1.000	1.000	1.000	1.000	1.000	1.000	1.000
PER. FACTOR	0.800	0.800	0.800	0.800	0.800	0.800	0.800
AMPL. FACTOR					YES	YES	
BENDING TERM COEFF.					YES	YES	

$C_u < P/P_{NAF_y}$ YES

TYPE OF CHECK: LOAD, RESISTANCE, RATIO

TYPE OF EQUATION: UPPER DEF., YIELD SUR.

RANGE OF EQUATION: BEAM, COLUMN, AXIAL

POINT OF COMPUTATION: MAX., END

$$1.000 \frac{C_u}{C_u} + 1.000 \frac{M_y}{M_u (1 - \frac{C_u}{C_u})} + 1.000 \frac{M_z}{M_u (1 - \frac{C_u}{C_u})} \leq 1.000$$

EQUATION: - 1 + STATUS: ACTIVE LIGIT RETURN

Fig. 2 Definition of design equations.

COMPUTER AIDED DESIGN OF STEEL FRAMES
Program of Computer Graphics, Cornell University
10 STORY, 3 BAY FRAME 3-FEB-84

BEHAVIOR HISTORY

MIN. 0.000 MAX. 1.000

DESIGN EVALUATION

DES. EQNS.	UPDATE
COLOR	COLOR SNAP
RE-DESIGN	DISPLACEMENT
DEF. SUPER	UP/DOWN SUPER
INF SUPER	RED LOAD
BEAM/COL	DIAGRAMS
ROT X	ROT Y
ROT Z	ZOOM
PAN	RESET
SNAP/PULL	HELP
EXIT	

Fig. 3 Identification of overstressed members.

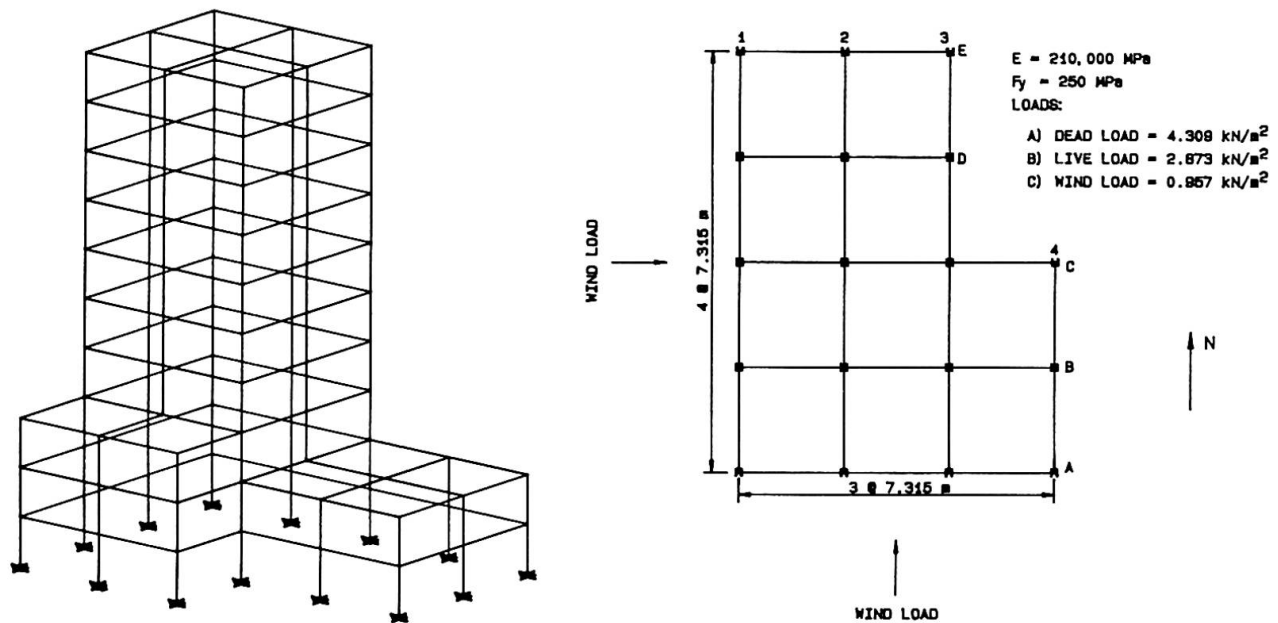


Fig. 4 a) Simplified isometric view of example structure, b) Dimension, material properties, and specified loads.

DESIGN I				DESIGN II			
1 W16X	26	33 W14X	22	1 W14X	22	33 W12X	22
2 W16X	26	34 W12X	22	2 W16X	26	34 W12X	22
3 W16X	26	35 W12X	72	3 W14X	22	35 W14X	90
4 W14X	22	36 W14X	109	4 W12X	22	36 W14X	132
5 W12X	22	37 W8 X	24	5 W12X	19	37 W10X	33
6 W18X	40	38 W12X	65	6 W18X	40	38 W12X	87
7 W21X	44	39 W12X	87	7 W18X	40	39 W14X	109
8 W18X	40	40 W14X	43	8 W18X	40	40 W12X	53
9 W18X	35	41 W14X	43	9 W18X	35	41 W12X	53
10 W16X	31	42 W12X	72	10 W14X	30	42 W14X	90
11 W18X	35	43 W10X	39	11 W18X	35	43 W10X	49
12 W16X	26	44 W10X	49	12 W16X	26	44 W12X	72
13 W16X	26	45 W12X	40	13 W14X	22	45 W10X	49
14 W14X	22	46 W8 X	35	14 W12X	22	46 W10X	49
15 W12X	22	47 W14X	109	15 W12X	19	47 W14X	132
16 W14X	30	48 W14X	176	16 W14X	30	48 W14X	211
17 W12X	22	49 W10X	39	17 W12X	19	49 W14X	48
18 W16X	26	50 W12X	79	18 W16X	26	50 W14X	90
19 W16X	26	51 W14X	145	19 W16X	26	51 W14X	176
20 W16X	26	52 W14X	38	20 W12X	26	52 W14X	48
21 W14X	22	53 W12X	72	21 W12X	22	53 W14X	90
22 W12X	22	54 W14X	109	22 W12X	19	54 W14X	145
23 W21X	50	55 W10X	49	23 W18X	40	55 W12X	58
24 W21X	50	56 W12X	79	24 W21X	44	56 W14X	90
25 W21X	44	57 W10X	33	25 W18X	40	57 W12X	40
26 W18X	40	58 W12X	45	26 W18X	35	58 W8 X	48
27 W18X	35	59 W12X	26	27 W16X	31	59 W10X	39
28 W18X	40	60 W10X	49	28 W18X	35	60 W12X	65
29 W18X	40	61 W12X	53	29 W18X	35	61 W12X	65
30 W16X	26	62 W8 X	40	30 W12X	26	62 W10X	49
31 W14X	22	63 W10X	49	31 W12X	22	63 W12X	65
32 W12X	22	64 W8 X	48	32 W12X	19	64 W12X	65
89900 kg				95345 kg			

Table 1 Final sections and total weight obtained by Design I and Design II.