

"Trypanosoma (Nannomonas) congolense" in the basement lamina of the anterior midgut cells of "Glossina pallidipes" : short communication

Autor(en): **Kaddu, J.B. / Mutinga, M.J.**

Objektyp: **Article**

Zeitschrift: **Acta Tropica**

Band (Jahr): **37 (1980)**

Heft 1

PDF erstellt am: **09.08.2024**

Persistenter Link: <https://doi.org/10.5169/seals-312643>

Nutzungsbedingungen

Die ETH-Bibliothek ist Anbieterin der digitalisierten Zeitschriften. Sie besitzt keine Urheberrechte an den Inhalten der Zeitschriften. Die Rechte liegen in der Regel bei den Herausgebern.

Die auf der Plattform e-periodica veröffentlichten Dokumente stehen für nicht-kommerzielle Zwecke in Lehre und Forschung sowie für die private Nutzung frei zur Verfügung. Einzelne Dateien oder Ausdrucke aus diesem Angebot können zusammen mit diesen Nutzungsbedingungen und den korrekten Herkunftsbezeichnungen weitergegeben werden.

Das Veröffentlichen von Bildern in Print- und Online-Publikationen ist nur mit vorheriger Genehmigung der Rechteinhaber erlaubt. Die systematische Speicherung von Teilen des elektronischen Angebots auf anderen Servern bedarf ebenfalls des schriftlichen Einverständnisses der Rechteinhaber.

Haftungsausschluss

Alle Angaben erfolgen ohne Gewähr für Vollständigkeit oder Richtigkeit. Es wird keine Haftung übernommen für Schäden durch die Verwendung von Informationen aus diesem Online-Angebot oder durch das Fehlen von Informationen. Dies gilt auch für Inhalte Dritter, die über dieses Angebot zugänglich sind.

¹ Kenya Trypanosomiasis Research Institute (K.E.T.R.I.), P.O. Box 362, Kikuyu, Kenya

² Department of Zoology, University of Nairobi, P.O. Box 30197, Nairobi, Kenya

Trypanosoma (Nannomonas) congolense* in the basement lamina of the anterior midgut cells of *Glossina pallidipes

Short communication

J. B. KADDU¹, M. J. MUTINGA²

Most of the documented electron microscopic studies of the African trypanosomes of economic importance have been made mainly on the trypanosomes belonging to the subgenera *Trypanozoon* and *Dutonella* (Vickerman, 1974; Steiger, 1973). We hereby submit a preliminary communication on the electron microscopic findings of what we think is an important investigation regarding the vector-parasite relationships in the life cycle of *Trypanosoma (Nannomonas) congolense*. These observations are similar to those found in *Glossina morsitans* with *Trypanosoma rhodesiense* (Evans and Ellis, 1975).

Teneral tsetse flies (*Glossina pallidipes*) which emerged from wild pupae (obtained from Lugala, Uganda; and incubated at $26 \pm 2^\circ \text{C}$ and humidity of 70–90% were fed on albino rats which had been infected with *T. (N.) congolense* LUGALA/69/EATRO/1381) at rising parasitaemia. The flies were subsequently maintained on sheep blood meals at EATRO. They were sacrificed and their guts were processed using standard techniques for electron microscopy (Hayat, 1970).

In some of the flies sacrificed on day 16 post-infection there were sections of trypanosomes in contact with the basement lamina of the cells of the anterior midgut. Trypanosome flagella were found partly embedded in the basement lamina; and this made the basement lamina have thickenings appearing like humps (Fig. 1).

The vector part of the life cycle of *T. (N.) congolense*, according to the information available in literature, is known to involve passage in the ectoperitrophic and the endoperitrophic spaces, plus the mouth-parts (Davies, 1977). More detailed features related to (and the significance of) the present findings, with regard to the route of migration of *T. (N.) congolense* in *Glossina pallidipes* will be discussed in a later publication.

Correspondence: Dr. John B. Kaddu, Ministry of Health, Kenya Trypanosomiasis Research Institute, Muguga, P.O. Box 362, Kikuyu, Kenya

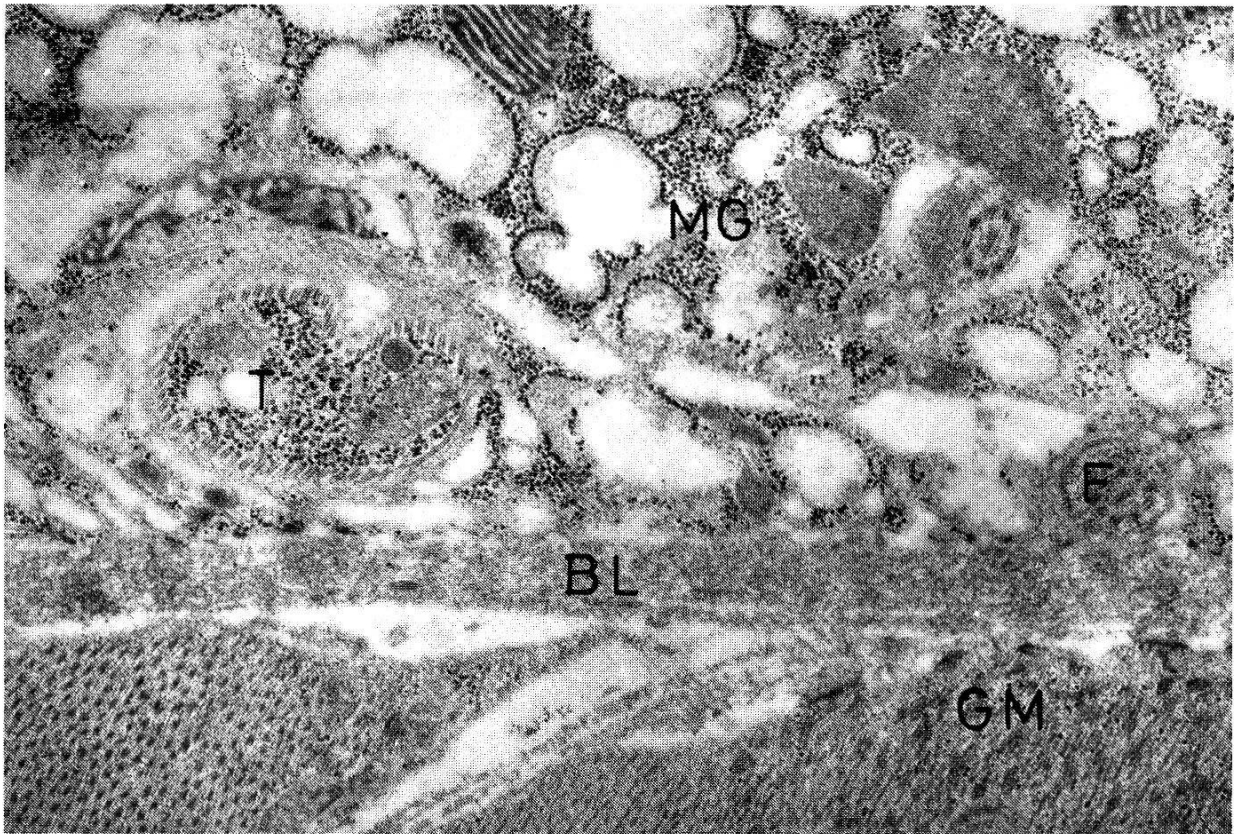


Fig. 1. Electron micrograph of part of a section of the anterior midgut of *Glossina pallidipes*. A trypanosome (T) is in contact with the basement lamina (BL) and a trypanosome flagellum (F) is partly embedded in the basement lamina. GM = gut muscle, MG = midgut cell. Magnification: 20,000 \times .

Acknowledgments. This study was financed by the then East African Community and by the Organization of African Unity. – We thank Professor Thomas R. Odhiambo, Director of ICIPE, Nairobi, for allowing the use of the facilities and technical advice in ICIPE's Fine Structure Research Unit. The senior author is indebted to Dr. A. R. Njogu, Director of K.E.T.R.I., for encouragement. This work forms part of a project by J.B. Kaddu for the Degree of Doctor of Philosophy of the University of Nairobi.

Davies H.: Tsetse flies in Nigeria. 340 p. Oxford University Press 1977.

Evans D. A., Ellis D. S.: Penetration of midgut cells of *Glossina* by *Trypanosoma rhodesiense*. *Nature* (Lond.) 258, 231–233 (1975).

Hayat M. A.: Principles and techniques of electron microscopy. 412 p. Van Nostrand Reinhold Company, New York/Cincinnati/Toronto/London/Melbourne 1970.

Steiger R. F.: On the ultrastructure of *Trypanosoma (Trypanozoon) brucei* in the course of its life cycle and some related aspects. *Acta trop. (Basel)* 30, 64–168 (1973).

Vickerman K.: The ultrastructure of pathogenic flagellates. In: *Trypanosomiasis and leishmaniasis, with special reference to Chagas' disease*, p. 171–198. Ciba Foundation Symposium 20. Elsevier/Excerpta Medica/North Holland, Amsterdam 1974.