

# Retrofit system to enhance earthquake resistance

Autor(en): **Stiemer, Siegfried F.**

Objektyp: **Article**

Zeitschrift: **IABSE congress report = Rapport du congrès AIPC = IVBH  
Kongressbericht**

Band (Jahr): **12 (1984)**

PDF erstellt am: **15.09.2024**

Persistenter Link: <https://doi.org/10.5169/seals-12298>

## **Nutzungsbedingungen**

Die ETH-Bibliothek ist Anbieterin der digitalisierten Zeitschriften. Sie besitzt keine Urheberrechte an den Inhalten der Zeitschriften. Die Rechte liegen in der Regel bei den Herausgebern.

Die auf der Plattform e-periodica veröffentlichten Dokumente stehen für nicht-kommerzielle Zwecke in Lehre und Forschung sowie für die private Nutzung frei zur Verfügung. Einzelne Dateien oder Ausdrucke aus diesem Angebot können zusammen mit diesen Nutzungsbedingungen und den korrekten Herkunftsbezeichnungen weitergegeben werden.

Das Veröffentlichen von Bildern in Print- und Online-Publikationen ist nur mit vorheriger Genehmigung der Rechteinhaber erlaubt. Die systematische Speicherung von Teilen des elektronischen Angebots auf anderen Servern bedarf ebenfalls des schriftlichen Einverständnisses der Rechteinhaber.

## **Haftungsausschluss**

Alle Angaben erfolgen ohne Gewähr für Vollständigkeit oder Richtigkeit. Es wird keine Haftung übernommen für Schäden durch die Verwendung von Informationen aus diesem Online-Angebot oder durch das Fehlen von Informationen. Dies gilt auch für Inhalte Dritter, die über dieses Angebot zugänglich sind.

## Retrofit System to Enhance Earthquake Resistance

**Siegfried F. STIEMER**

Assoc. Prof. Univ.  
of British Columbia  
Vancouver, BC, Canada

Experimental and analytical investigations of a retrofit-system to enhance the earthquake resistance in existing buildings and structures have been conducted in the University of British Columbia, Department of Civil Engineering, Earthquake Simulator Laboratory. The system consists of a combination of well known base-isolation techniques, a new base storey design, and newly developed multidirectional energy absorber made of mild steel. The research results indicated the usefulness of this system and proved, that it can be implemented in existing buildings without reduction of the structural integrity of the building and without major modifications of the original design.

The key idea of the system is to separate the building from the existing ground motion by roller bearings or sliding pads and restricting it from excessive displacements by solid state steel energy absorbers. Extensive experimental tests have been conducted to prove the principles, to correlate analytical programmes, and to devise an engineering approach to the design of the system as a whole and the energy absorbers in particular. A transparent design procedure is now available, which enables the engineer to design this retrofit-system for different earthquake regions and for different structures.

One of the focal points of the research project was to show, how a retrofit base-isolation system could be implemented in steel buildings without additional blind-storeys or double foundations as used in recent proposals by others. This results in considerable cost savings, which make the new approach very attractive for a broad spectrum of buildings for which until now an update in respect to earthquake resistance was believed to be too expensive.

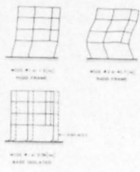
High importance was placed on the investigations and development of reliable, inexpensive, and replaceable energy absorbers. They have to restrain the building against wind loads and, in case being subjected to major earthquake loadings, have to prevent the building from excessive displacements. These devices are designed to deform elastically under minor loads (such as wind) or displacements (such as thermal expansion) and to deform plastically when severe loads (such as earthquakes) are imposed on the building or bridge. The energy absorbers allow displacements in all directions, however work most efficiently for displacements in the horizontal plane. They consist of curved plates of hot-rolled mild steel plates. An engineering method was introduced by the author for the practical design of the steel energy absorbers and for predetermining the number of cycles to failure.

In the experimental studies steel roller bearings were used because they had a very low friction coefficient without becoming unstable for large displacements. However, the design approach is valid for other low friction sliding devices, too, e.g. for neoprene bearings often used in bridge applications.

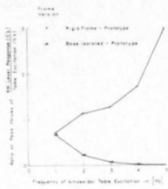
A wide range of applications can be foreseen for the solid state steel energy absorbers, particularly in the area where currently viscous or friction dampers are used (bridges, nuclear power plants), which can add considerable costs, constant maintenance, and can cause problems of implementation because of bulkiness.

# RETROFIT-SYSTEM TO ENHANCE EARTHQUAKE RESISTANCE

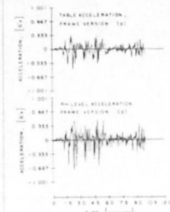
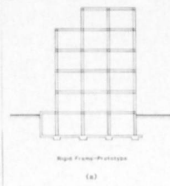
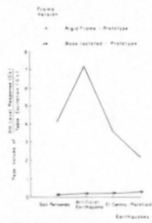
ANALYTICAL RESULTS OF TESTED MODEL



REDUCTION OF SINUSOIDAL EXCITATION



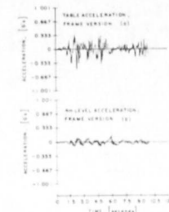
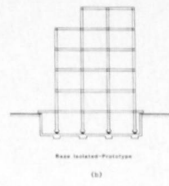
REDUCTION OF EARTHQUAKE EXCITATION



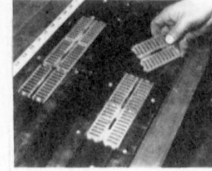
TIME HISTORY OF EXCITATION AND RESPONSE TO EL CENTRO EARTHQUAKE FOR RIGID AND BASE-ISOLATED FRAME



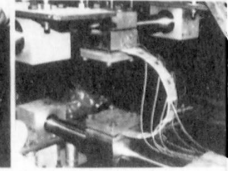
SCHEMATIC VIEW OF PROPOSED ISOLATION PAD WITH STEEL ROLLER BEARING AND STEEL YIELD RINGS



HYSTERESIS OF THE YIELD RINGS USED IN MODEL TESTS



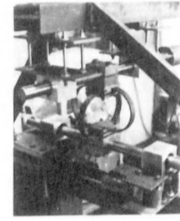
ROLLER BEARING PADS FOR BASE ISOLATION RETROFIT



YIELD RING IN DYNAMIC TESTING



EXPERIMENTAL INVESTIGATION OF MODEL BUILDING ON EARTHQUAKE SIMULATOR



MULTIDIRECTIONAL YIELD RINGS IN LOW CYCLE FATIGUE TESTING