

Engineered cyclone shelter for disaster prevention

Autor(en): **Santhakumar, A.R.**

Objektyp: **Article**

Zeitschrift: **IABSE congress report = Rapport du congrès AIPC = IVBH
Kongressbericht**

Band (Jahr): **14 (1992)**

PDF erstellt am: **09.08.2024**

Persistenter Link: <https://doi.org/10.5169/seals-13861>

Nutzungsbedingungen

Die ETH-Bibliothek ist Anbieterin der digitalisierten Zeitschriften. Sie besitzt keine Urheberrechte an den Inhalten der Zeitschriften. Die Rechte liegen in der Regel bei den Herausgebern.

Die auf der Plattform e-periodica veröffentlichten Dokumente stehen für nicht-kommerzielle Zwecke in Lehre und Forschung sowie für die private Nutzung frei zur Verfügung. Einzelne Dateien oder Ausdrucke aus diesem Angebot können zusammen mit diesen Nutzungsbedingungen und den korrekten Herkunftsbezeichnungen weitergegeben werden.

Das Veröffentlichen von Bildern in Print- und Online-Publikationen ist nur mit vorheriger Genehmigung der Rechteinhaber erlaubt. Die systematische Speicherung von Teilen des elektronischen Angebots auf anderen Servern bedarf ebenfalls des schriftlichen Einverständnisses der Rechteinhaber.

Haftungsausschluss

Alle Angaben erfolgen ohne Gewähr für Vollständigkeit oder Richtigkeit. Es wird keine Haftung übernommen für Schäden durch die Verwendung von Informationen aus diesem Online-Angebot oder durch das Fehlen von Informationen. Dies gilt auch für Inhalte Dritter, die über dieses Angebot zugänglich sind.

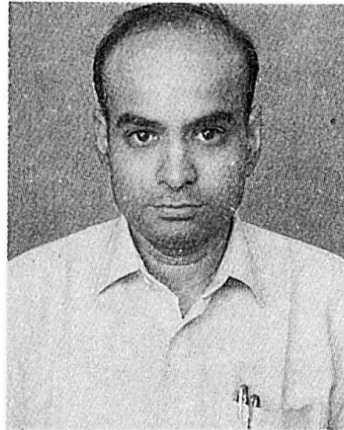
Engineered Cyclone Shelter for Disaster Prevention

Prévention des dégâts de cyclones par abris adéquats

Ingenieurmässig konstruierte Schutzbauten gegen Wirbelstürme

A.R. SANTHAKUMAR

Prof.
Anna Univ.
Madras, India



Santhakumar received his B.E. Civil and M.Sc. (Struc.) from college of Eng. Guindy. He was a commonwealth Scholar at the Univ. of Canterbury, Christchurch, New Zealand where he obtained his Ph.D. For 25 years he has been teaching and guiding research at Anna University.

SUMMARY

The paper describes a technical study on the behaviour of cyclone shelter models in the wind tunnel. Two different types of shelter have been considered. The superior performance of these shelters has been highlighted.

RÉSUMÉ

L'article présente une étude technique comparative sur le comportement de deux modèles d'abris prévus contre les cyclones et soumis à des essais en soufflerie. Il met en relief les résistances performantes de telles constructions.

ZUSAMMENFASSUNG

Zwei Typen von Schutzbauten gegen Wirbelstürme wurden vergleichenden Tests in einem Windtunnel unterzogen. Die vorliegende technische Studie bespricht die überragende Widerstandsfähigkeit dieser Konstruktionen.



1. GENERAL

Safeguarding life and property from the destructive effects of cyclones is a major worldwide problem. India being a peninsula with 5000 Km coast, is often threatend by this natural hazard. Every year the cyclones damage crops, distroy human lives, cattle and structures. Safe design of structures against wind require a reasonably accurate estimate of loads as well as a knowledge of structural behaviour when subjected to these loads. As a part of disaster prevention plan, a program of building cyclone shelters for housing the people who are rendered homeless has been taken up at sites shown in Fig.1.

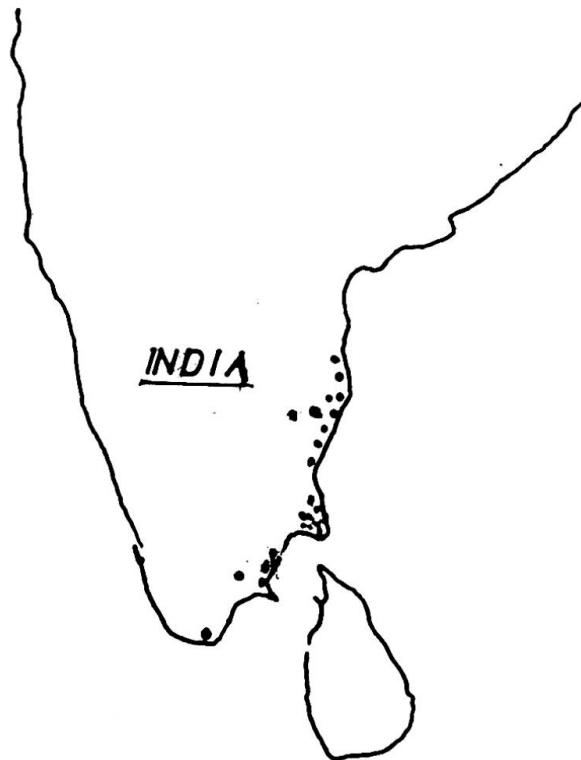


Fig.1 Distribution of Cyclone shelters

2. TYPE OF STRUCTURES

The cyclone shelter (Type I) as shown in Fig.2, is of circular plan form so that it offers least resistance to wind force from any dorection. The diameter of the shelter is 15 metres. The height is 7.5 metres. It has two floors. The shelters are erected on a raised ground to prevent flood waters reaching the floor.

In another type design, the bath and washing were provided outside the main floor area as shown in Fig.3. In this type, the symmetry of the structure is broken by the inclusion of a projection over a 60° plan form. The second type (type II) of shelter has also been studied.

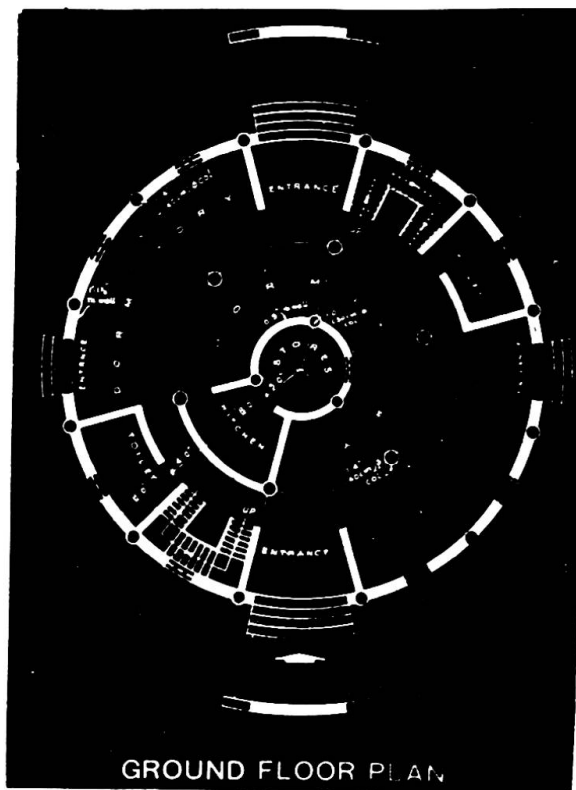


Fig.2 Type I shelter



Fig.3 Type II shelter

3. MODEL TESTING

Model test in a wind tunnel has been conducted to estimate the variation of pressures along the walls and roofs of the cyclone shelters and thus find the aerodynamic forces and moments. The subsonic wind tunnel situated at Anna University was used for testing. The shape of the cyclone shelter has been faithfully reproduced. The windows, ventilators and openings have been scaled down to a model scale of 1/50. Since the Reynolds Number of the structure and the model are well over 10^6 , it is reasonable to assume that the force coefficients of the prototype and model are directly related. Structural similarity between the model and prototype is not



attempted as only a static model was tested. Monometers and pitot tubes have been used to measure the wind pressure and wind speed respectively. A typical model is shown in Fig.4.

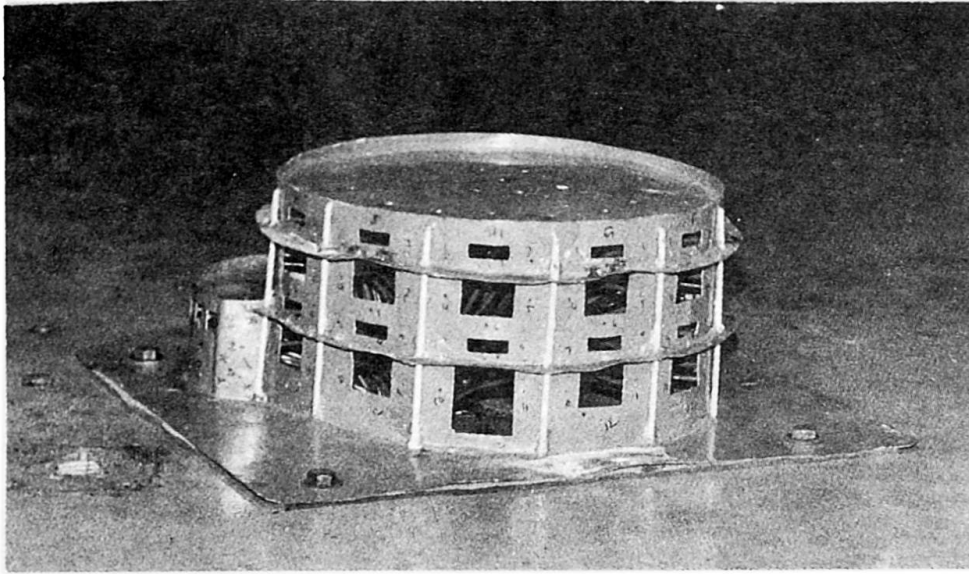


Fig.4 A typical model

Type II was tested for nine different positions as shown in Fig.5.

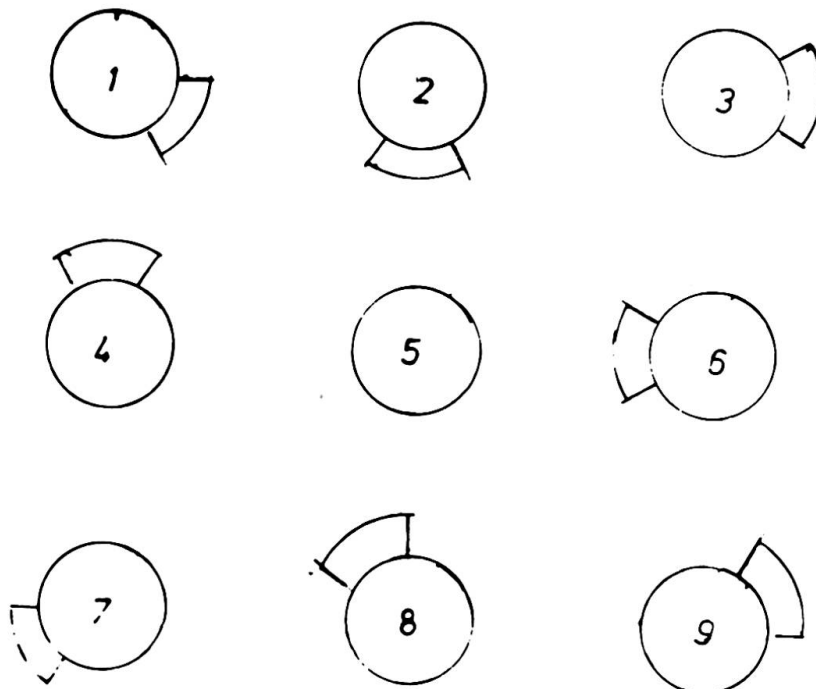


Fig.5 Positions during testing

4. WIND LOADS ON THE STRUCTURE

From the model tests pressure coefficient C_p at different wind speeds for various positions of models and different permeabilities were obtained. The flow lines obtained during testing of both type I and Type II models are shown in Fig. 6 and Fig. 7 respectively.



Fig.6 Flow lines for type I

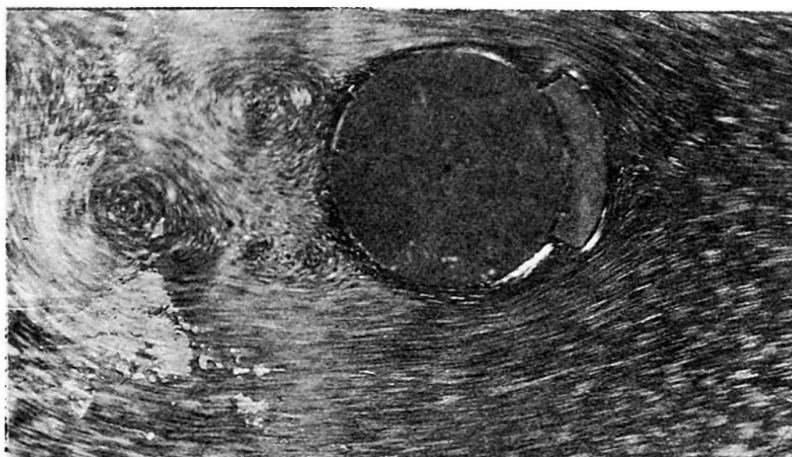


Fig.7 Flow lines for type II



5. CONCLUSION

The calculations show that present structure put up along the coast of India are safe from usual cyclones that form in Bay of Bengal for wind speeds upto 150 Kmph.

Type II has to resist three times the overturning moment as Type I. though both are safe.

REFERENCES

1. SANTHAKUMAR A.R., PADMANABHAN K and SUBRAMANIAN P.S., Final project report on Evaluation of cyclone shelters, August, 1982.
2. Antidisater planning for cyclones and flood affected areas of Tamilnadu, Directorate of Town and Country Planning Document, 1978..