

Rizhskaya Flyover in Moscow

Autor(en): **[s.n.]**

Objektyp: **Article**

Zeitschrift: **IABSE structures = Constructions AIPC = IVBH Bauwerke**

Band (Jahr): **2 (1978)**

Heft C-4: **Structures in the USSR**

PDF erstellt am: **22.07.2024**

Persistenter Link: <https://doi.org/10.5169/seals-15098>

Nutzungsbedingungen

Die ETH-Bibliothek ist Anbieterin der digitalisierten Zeitschriften. Sie besitzt keine Urheberrechte an den Inhalten der Zeitschriften. Die Rechte liegen in der Regel bei den Herausgebern.

Die auf der Plattform e-periodica veröffentlichten Dokumente stehen für nicht-kommerzielle Zwecke in Lehre und Forschung sowie für die private Nutzung frei zur Verfügung. Einzelne Dateien oder Ausdrucke aus diesem Angebot können zusammen mit diesen Nutzungsbedingungen und den korrekten Herkunftsbezeichnungen weitergegeben werden.

Das Veröffentlichen von Bildern in Print- und Online-Publikationen ist nur mit vorheriger Genehmigung der Rechteinhaber erlaubt. Die systematische Speicherung von Teilen des elektronischen Angebots auf anderen Servern bedarf ebenfalls des schriftlichen Einverständnisses der Rechteinhaber.

Haftungsausschluss

Alle Angaben erfolgen ohne Gewähr für Vollständigkeit oder Richtigkeit. Es wird keine Haftung übernommen für Schäden durch die Verwendung von Informationen aus diesem Online-Angebot oder durch das Fehlen von Informationen. Dies gilt auch für Inhalte Dritter, die über dieses Angebot zugänglich sind.



5. Rizhskaya Flyover in Moscow

Designer: Design Institute Giprotransmost
Contractor: A constructional organization of
 Glavmostostroi

Sphere of application: The structure is meant to have
 8 lanes for vehicular traffic and
 pedestrians

Full deck width: 39.5 m, including two 16.5 m-wide
 roadways

Static system: The structure consists of sections of various
 types – framework system with span lengths
 varying from 25 to 32.95 m; continuous
 superstructure with span lengths varying
 from 31.35 to 44.34 m

Longitudinal grade: up to 4.5 per cent, radius of vertical
 curvature is 10'000 m.

*Materials used per m² of structure (above the foundation
 top):*

- for prestressed concrete frame units:
 reinforced concrete M 500 – 0.42 m³
 steel reinforcement – 88 kg, including 16 kg of pre-
 stressing steel
- for continuous concrete superstructure:
 rolled metal – 144 kg
 reinforced concrete – 0.2 m³

Traffic opened: in 1975

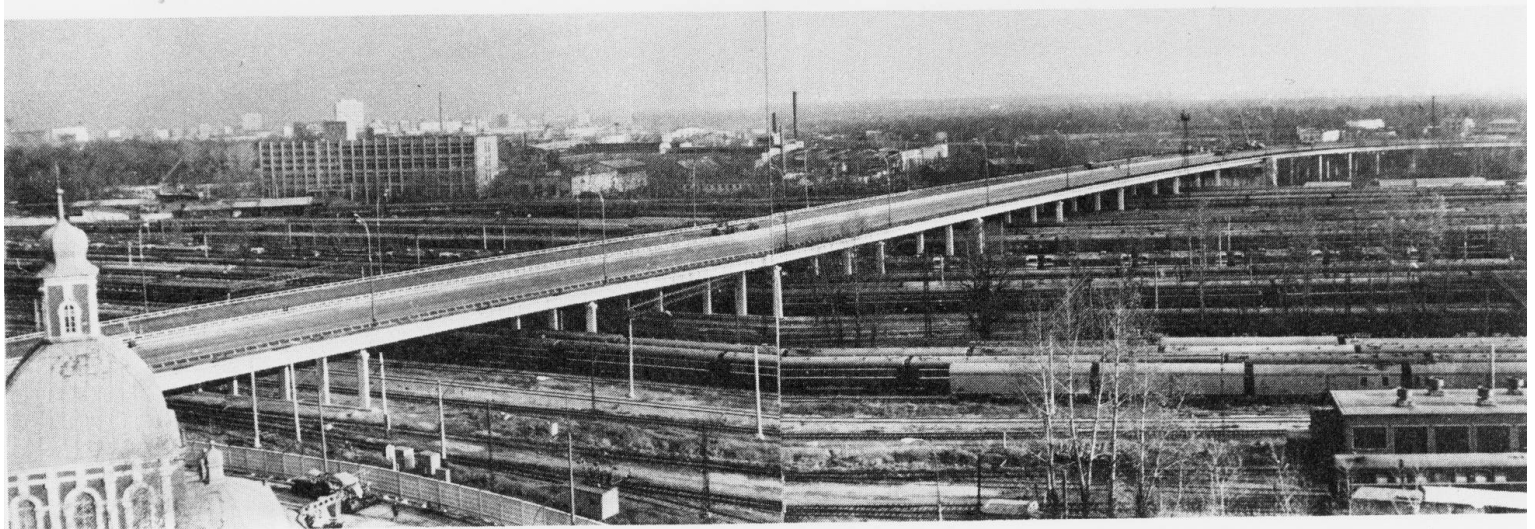
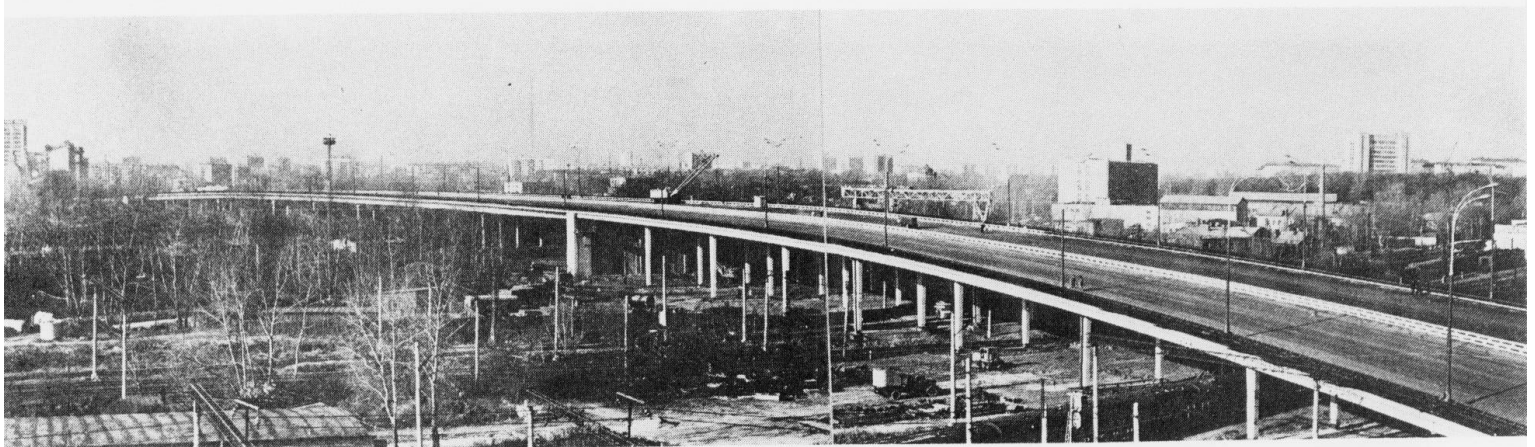


Fig. 1 The general view of the Rizhskaya flyover

The overbridge as part of the city's third ring highway crosses one of the most complicated transport junctions (64 tracks of Moscovskaya and Ochyabrskaya railways and city traffic roads running beside them).

The designers took into consideration the traffic safety conditions, the city architecture requirements, the possibility of perspective crossing with future high-speed motorways.

From designing viewpoint, the flyover (Fig. 1) is a system of sections of statically various types made of steel concrete and precast prestressed concrete units.

The overbridge part including the continuous steel concrete superstructure is about 400 m long.

The girders (Fig. 2) are made of separate all-welded I-beams 1.52 m and 1.76 m deep. The precast 17 cm-deep deck slabs act together with metal units due to concreting longitudinal joints over the beams. The slabs of the locations having negative moments are preliminarily squeezed. The superstructure is supported by pillars through diaphragms linking the girders.

The pillars made of precast concrete have a cross-section 0.56×1.6 m, their smaller side being semi-circular.

The overbridge part erected of precast concrete members (Fig. 3) is over 340 m long, radius of curvature being up to 520 m. It consists of 3 frames, each including 4 spans of variable lengths.

The frame caps are made of precast prestressed I-beams up to 34.5 m long, 1.2 m deep.

The frame cross-section has 4 pillars of variable sections made of precast concrete elements. The beams are joined with the pillars by secret transverse cast in place concrete beams.

High strength wires $d = 5$ mm were used for prestressing reinforcement of the frames, and twisted ribbed bars (steel AIII and AII) were used for the rated non-stressed reinforcement.

The traffic curb consists of a low concrete wall 20 cm high and metal brackets attached to it with a metal pipe $d = 159$ mm passing through these brackets at the height of 0.7 m. The bridge railing is of welded metal with cast hand-rails and socles.

The erection of large precast concrete units was carried out by crawler cranes and locomotive cranes. Metal units of the continuous steel concrete superstructure were assembled in the location of the concrete frame of the flyover and then erected by longitudinal launching into final position (Fig. 4).

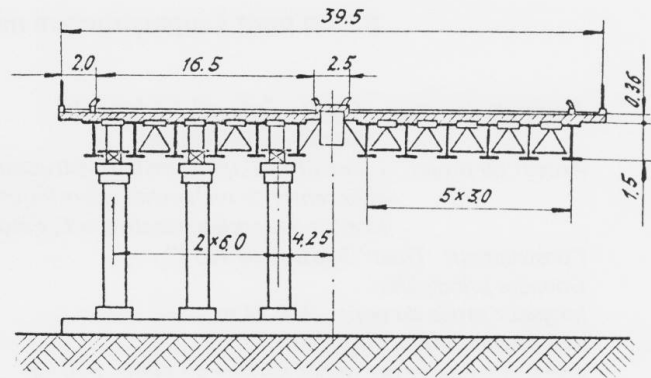


Fig. 2 Cross-section of the steel concrete part of the flyover

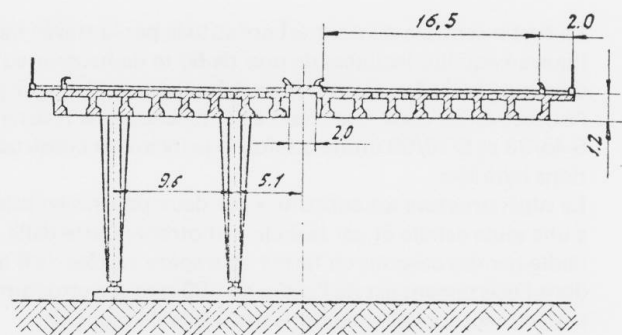


Fig. 3 Cross-section of the prestressed concrete part of the flyover

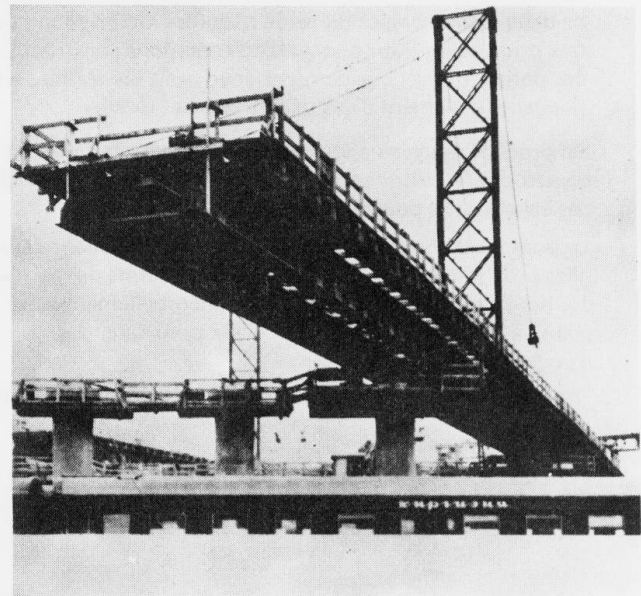


Fig. 4 Erection of the superstructure steel unit by longitudinal launching