

Zeitschrift: IABSE structures = Constructions AIPC = IVBH Bauwerke
Band: 12 (1988)
Heft: C-45: Recent structures

Artikel: Tugu Pratama office building, Jakarta (Indonesia)
Autor: Aeberhard, H.U.
DOI: <https://doi.org/10.5169/seals-20915>

Nutzungsbedingungen

Die ETH-Bibliothek ist die Anbieterin der digitalisierten Zeitschriften. Sie besitzt keine Urheberrechte an den Zeitschriften und ist nicht verantwortlich für deren Inhalte. Die Rechte liegen in der Regel bei den Herausgebern beziehungsweise den externen Rechteinhabern. [Siehe Rechtliche Hinweise.](#)

Conditions d'utilisation

L'ETH Library est le fournisseur des revues numérisées. Elle ne détient aucun droit d'auteur sur les revues et n'est pas responsable de leur contenu. En règle générale, les droits sont détenus par les éditeurs ou les détenteurs de droits externes. [Voir Informations légales.](#)

Terms of use

The ETH Library is the provider of the digitised journals. It does not own any copyrights to the journals and is not responsible for their content. The rights usually lie with the publishers or the external rights holders. [See Legal notice.](#)

Download PDF: 24.01.2025

ETH-Bibliothek Zürich, E-Periodica, <https://www.e-periodica.ch>



6. Tugu Pratama Office Building, Jakarta (Indonesia)

Owner: PT Tugu Pratama Indonesia
Engineer: PT Wiratman & Associates
Contractor: PT Pembangunan Perumahan
Post-tensioning: PT VSL Indonesia
Construction time: June 1987 – February 1988

This is one of the office complexes in Indonesia's capital Jakarta with an outstanding architectural form: the building has the shape of a truncated pyramid. It is located in the commercial area along Jalan H. R. Rasuna Said. The complex consists of a 5-storey tower block and a single-storey basement as a parking area. The penthouse will be used as a fitness centre. The building has the concept of an «open layout office space» with a skylight above the atrium.

The total gross floor area is 12400 m². The exterior columns are inclined at 65°. Post-tensioning is used for the main beams, which span between the exterior and interior columns. Span lengths vary between 9.00 and 16.50 m. The sizes of the beams range between 300 × 600 and 400 × 850 mm. The tie beams connecting the bases of the columns are also post-tensioned, to resist the forces resulting from the inclination of the columns.

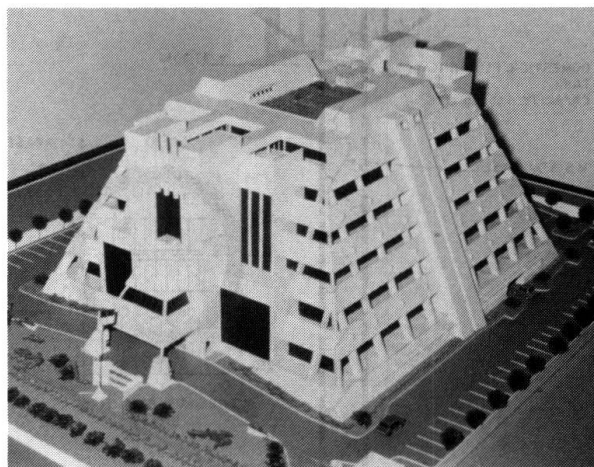


Fig. 1 View of the model

The VSL tendons used are of types 5-12, 5-16 and 5-19. In total nearly 60 tonnes of prestressing strand were used in this project.

(H. U. Aeberhard)

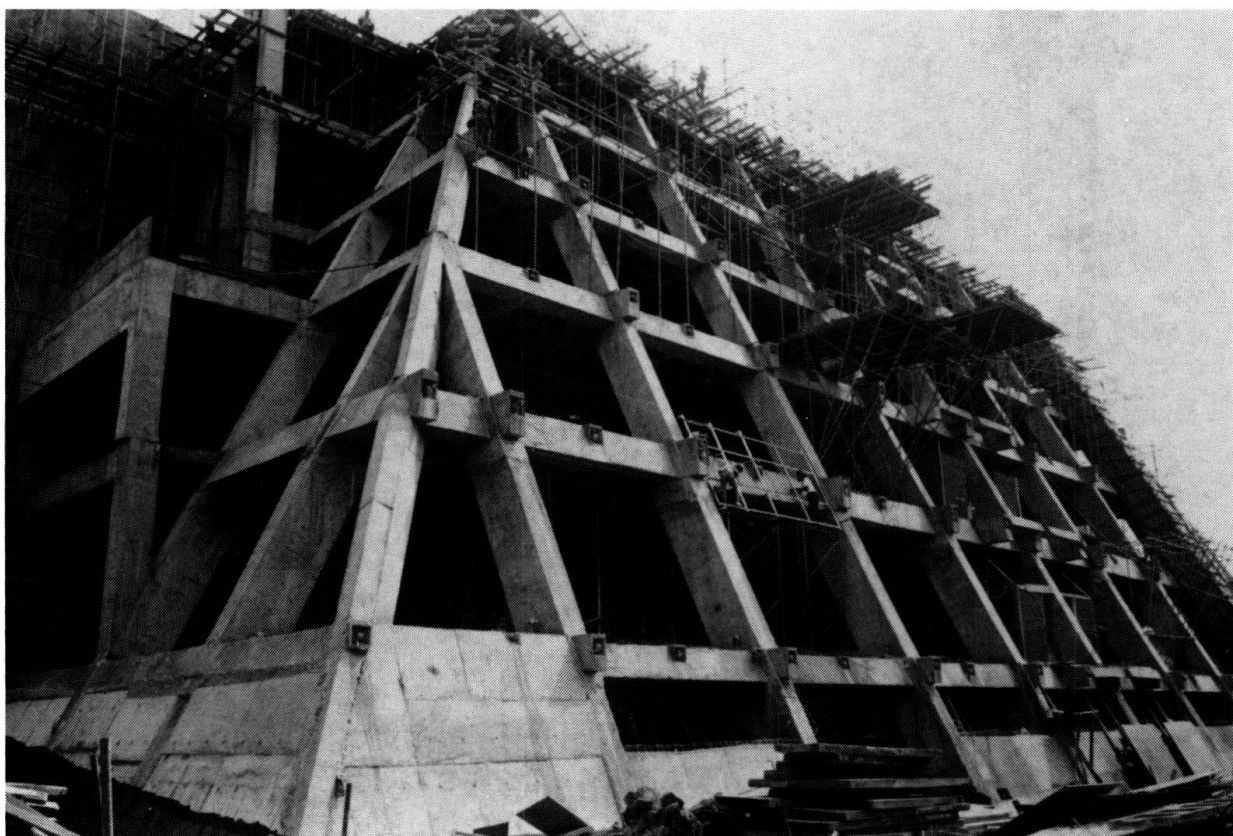


Fig. 2 The building under construction; note beam ends with cable anchorages