

# "Caixa Geral de Depósitos" new headquarters, Lisbon (Portugal)

Autor(en): **Botto, A.**

Objektyp: **Article**

Zeitschrift: **IABSE structures = Constructions AIPC = IVBH Bauwerke**

Band (Jahr): **13 (1989)**

Heft C-48: **Structures in Portugal**

PDF erstellt am: **26.09.2024**

Persistenter Link: <https://doi.org/10.5169/seals-21556>

## **Nutzungsbedingungen**

Die ETH-Bibliothek ist Anbieterin der digitalisierten Zeitschriften. Sie besitzt keine Urheberrechte an den Inhalten der Zeitschriften. Die Rechte liegen in der Regel bei den Herausgebern.

Die auf der Plattform e-periodica veröffentlichten Dokumente stehen für nicht-kommerzielle Zwecke in Lehre und Forschung sowie für die private Nutzung frei zur Verfügung. Einzelne Dateien oder Ausdrucke aus diesem Angebot können zusammen mit diesen Nutzungsbedingungen und den korrekten Herkunftsbezeichnungen weitergegeben werden.

Das Veröffentlichen von Bildern in Print- und Online-Publikationen ist nur mit vorheriger Genehmigung der Rechteinhaber erlaubt. Die systematische Speicherung von Teilen des elektronischen Angebots auf anderen Servern bedarf ebenfalls des schriftlichen Einverständnisses der Rechteinhaber.

## **Haftungsausschluss**

Alle Angaben erfolgen ohne Gewähr für Vollständigkeit oder Richtigkeit. Es wird keine Haftung übernommen für Schäden durch die Verwendung von Informationen aus diesem Online-Angebot oder durch das Fehlen von Informationen. Dies gilt auch für Inhalte Dritter, die über dieses Angebot zugänglich sind.



## 5. «Caixa Geral de Depósitos» New Headquarters, Lisbon (Portugal)

**Owner:** Caixa Geral de Depósitos, Portugal  
**Architect:** Arsénio Cordeiro  
**Engineers:** LUSOTECNA and Consultores Técnicos Industriais  
**Contractors:** Soares da Costa SA, Teixeira Duarte SA and SOMECE  
**Works duration:** 5 years  
**Service date:** 1991  
**Construction area:** 210 000 m<sup>2</sup>

### General

Caixa Geral de Depósitos (CGD) is a Portuguese State Credit Bank. Among other activities it attracts savings, in the form of deposits. CGD is the leader in the Portuguese banking system. According to the volume of deposits, it occupies the 5th place among the biggest saving banks of the European Community and the 10th place at a world level. Due to the fact that its departments are scattered through several buildings all over Lisbon, a decision was taken in order to concentrate them. For this purpose, the construction of a very modern and spacious building is taking place in Campo Pequeno, a central zone of the city. The designers were chosen, through a limited tender, out of a selection of 10 partnerships composed of national consultants, most of them in association with foreign consultants.

### Structures

The buildings will be set up on a site with an area of approximately 37 000 m<sup>2</sup>. The gross floor area will be about 210 000 m<sup>2</sup>, distributed through 15 floors. The plan area is about 21 000 m<sup>2</sup>, with a maximum length of 250 meters.

There are six floors below street level. This zone is encircled by an earth-sustaining surrounding wall, of «Berlin» and «diaphragm» types, which is linked to the structures of the buildings at each floor level.

This wall as well as the structures of the buildings are made of reinforced concrete. Fungiform slabs of plastic waffle moulds lying on columns 8,10 m spaced form the main structures.

These structures are composed of frames following orthogonal directions, with very strong staircases and lift shafts located in order to avoid excessive distance between them. The centroid structures, which are limited by expansion joints, were made to coincide as much as possible, thus diminishing possible distabilizing torsions in the whole structure due to an earthquake.

The materials used in the superstructure and foundations are B25 and B40 concrete and A400ER and A500 steel, according to Portuguese regulations.

The structural conception obtained will permit a great flexibility in the utilization of the spaces thus enabling a natural evolution of the services.

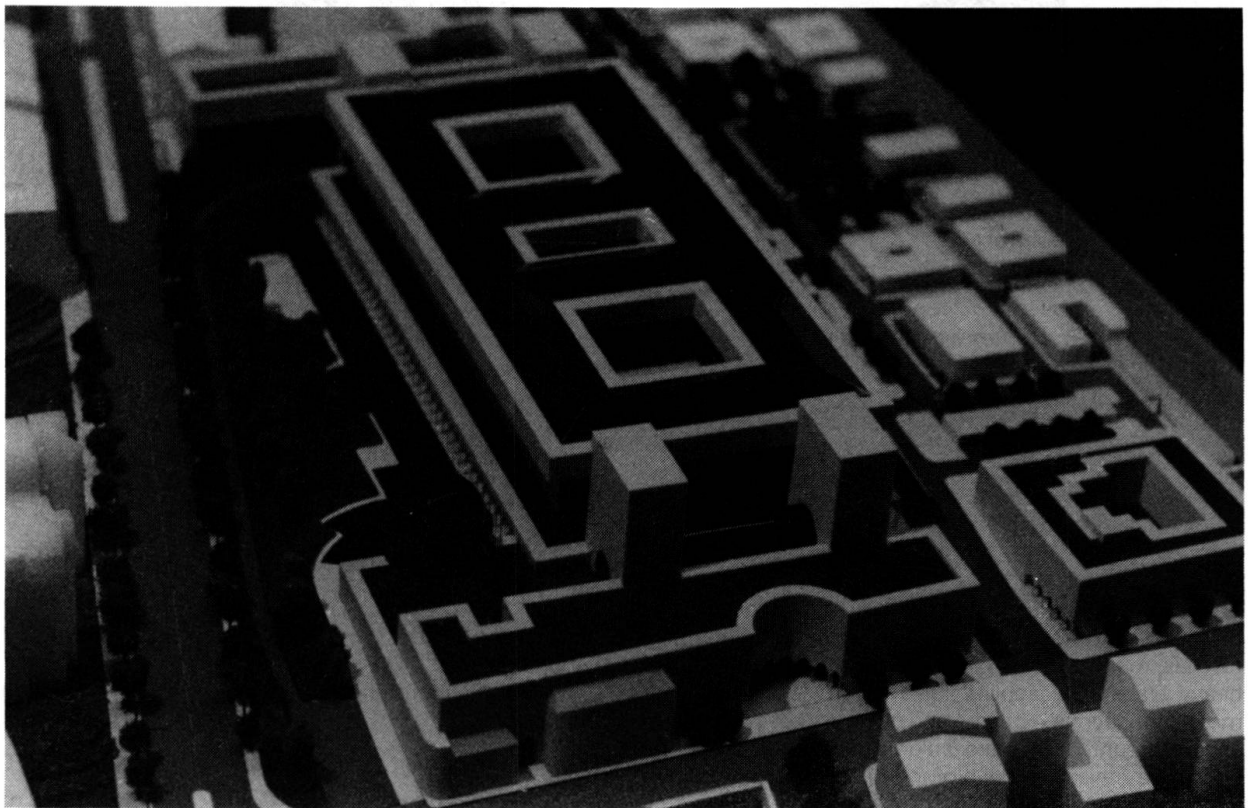
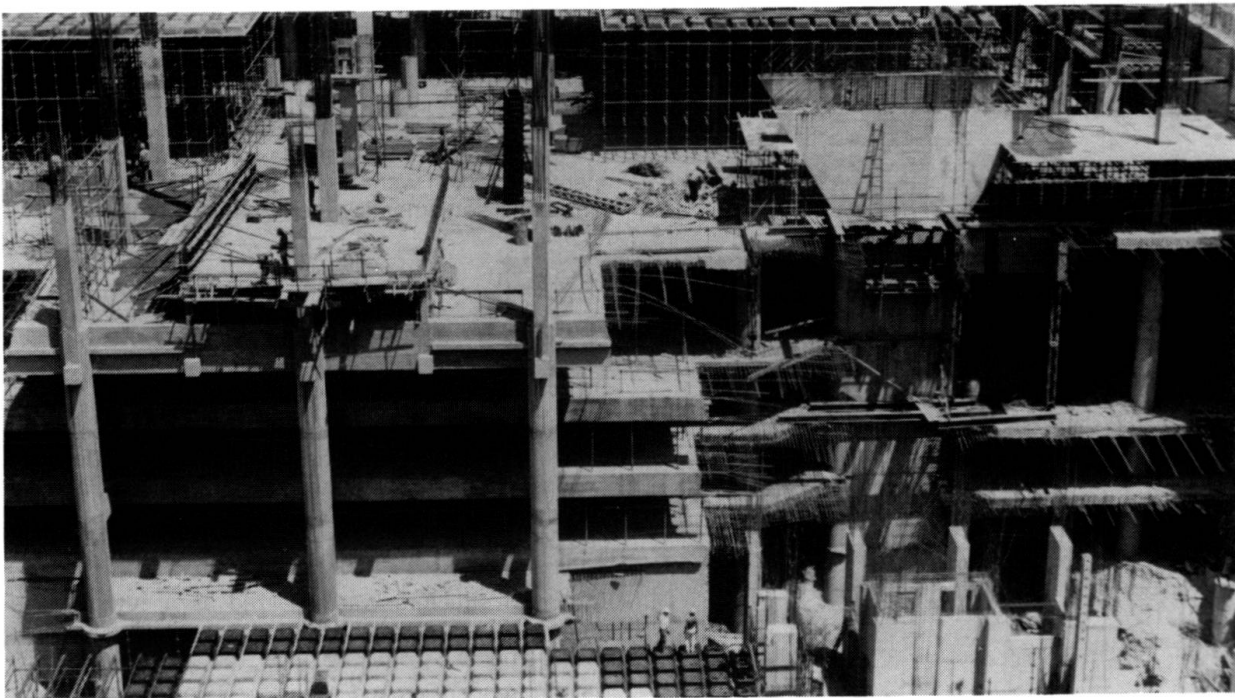


Fig. 1 Model of the building



*Fig. 2 General view of the site construction*



*Fig. 3 Works in progress*

### **Construction works**

The undertaking is being carried out by several contractors who were selected through successive tenders within the countries of the EC. New invitations for more tenders, concerning the technical installations which are supposed to equip the buildings, will be advertised in due course.

The whole enterprise should be accomplished by the end of 1991, that is to say, practically 5 years after the beginning of the works.

*(A. Botto)*