

Composite suspension bridge tower with concrete filled double steel walls

Autor(en): **Nakamura, Shunichi / Nishiumi, Kenji**

Objektyp: **Article**

Zeitschrift: **IABSE reports = Rapports AIPC = IVBH Berichte**

Band (Jahr): **79 (1998)**

PDF erstellt am: **27.06.2024**

Persistenter Link: <https://doi.org/10.5169/seals-59853>

Nutzungsbedingungen

Die ETH-Bibliothek ist Anbieterin der digitalisierten Zeitschriften. Sie besitzt keine Urheberrechte an den Inhalten der Zeitschriften. Die Rechte liegen in der Regel bei den Herausgebern.

Die auf der Plattform e-periodica veröffentlichten Dokumente stehen für nicht-kommerzielle Zwecke in Lehre und Forschung sowie für die private Nutzung frei zur Verfügung. Einzelne Dateien oder Ausdrucke aus diesem Angebot können zusammen mit diesen Nutzungsbedingungen und den korrekten Herkunftsbezeichnungen weitergegeben werden.

Das Veröffentlichen von Bildern in Print- und Online-Publikationen ist nur mit vorheriger Genehmigung der Rechteinhaber erlaubt. Die systematische Speicherung von Teilen des elektronischen Angebots auf anderen Servern bedarf ebenfalls des schriftlichen Einverständnisses der Rechteinhaber.

Haftungsausschluss

Alle Angaben erfolgen ohne Gewähr für Vollständigkeit oder Richtigkeit. Es wird keine Haftung übernommen für Schäden durch die Verwendung von Informationen aus diesem Online-Angebot oder durch das Fehlen von Informationen. Dies gilt auch für Inhalte Dritter, die über dieses Angebot zugänglich sind.

Composite Suspension Bridge Tower with Concrete Filled Double Steel Walls

Shunichi NAKAMURA
Prof. Dr
Tokai Univ.
Hiratuka, Japan

Kenji NISHIUMI
Civil Eng.
Nippon Steel Corp., Steel Struct. Dev.
Futtu, Japan

Summary

A new composite tower is developed and applied to the suspension bridge towers. The new tower consists of corner columns and side walls with double steel plate elements, and concrete is poured inside the columns and the steel elements. The columns and steel elements are connected by the composite joints which are usually used for steel sheet piles. An alternative design is performed for the Akashi Kaikyo Bridge Tower, which shows that the steel weight of this composite tower becomes half of the original steel tower.

1. Structural forms of new composite tower

Two types of towers have been used for suspension bridge towers: steel and concrete towers. Steel towers enable quick site erection but are relatively expensive mainly because of facing machine work on the plate ends. Concrete towers are advantageous in resisting compressive forces but careful quality control is required to avoid cracks due to bending moments, and mold works are inevitable for concrete work. A new type of composite towers are developed for suspension bridge towers as shown in fig.1. Columns consisting of steel box or pipes are arranged at the corners, double wall steel elements connect these columns, and concrete are filled inside the columns and the steel elements. Adjacent steel elements are jointed by the composite joints with claws which are used for steel sheet piles. The filled concrete mainly resists compressive forces and steel plates resist bending moments. This type of composite towers have been already used for bridge piers of Meiko Center Bridge with about 50m high, as shown in picture 1.

2. An alternative design of the Akashi Kaikyo Tower using composite tower

This new composite tower is designed as an alternative for the tower on the Akashi Kaikyo Bridge with spans 960+1990+960m. Dimensions of the assumed cross sections for steel and composite towers are shown in fig.2. The design loads on a cable plane are the dead load of suspended girders and cables of 200kN/m, live loads of 21kN/m, and cable temperature change of 30deg. Table 1 shows the main calculation results. Horizontal tower displacements of both towers are not very much different instead of the large difference of the bending stiffness of towers, but bending moment of the composite tower is 2.5 times large that of the steel tower. Strength is checked by the following equations.

$$\gamma = \nu P / P_{cr} + \nu M / M_y \leq 1.0 \quad \text{for steel tower}$$

$$\gamma = \nu^2(1+\beta)(P/P_u)^2 - \nu\beta(P/P_u) + \nu M/M_u \leq 1.0 \quad \text{for composite tower}$$

where ν : safety factor 1.7 for steel towers and 1.5 for concrete towers, P : axial forces, P_{cr} : critical axial strength, P_u : ultimate axial strength, M : bending moment, M_y : yield bending moments, M_u : ultimate bending moments and β : coefficients proposed by Nakai (Proc. JSCE, I-6, 1986). The steel towers are checked by the yield strength but composite towers by the ultimate strength. The compressive strength reduction due to buckling is included in P_{cr} and P_u . Structural detail for the Akashi Kaikyo Bridge Tower is shown in fig.3. Six square box columns with width of 1.2m are arranged at the corners. Double wall steel elements with width of 0.9m connect the columns with the composite joints. Concrete is poured inside the columns and the steel elements,



and no mold is required for concrete works. The steel weight of the composite tower is 50% of the steel tower but the total weight is 3.4 times large as shown in table 1.

Table 1 Calculation results

Calculation results (per column)	Composite Tower	Steel Tower
Cable tension due to dead load (kN)	497,500	497,500
Cable tension due to live and temperature loads (kN)	38,130	37,610
Vertical force at tower top (kN)	467,500	465,200
Vertical force at tower bottom (kN)	776,200	583,900
Maximum tower bending moment (kNm)	2,285,000	911,800
Moment of inertia of tower (m ⁴)	197.0	56.80
Horizontal tower displacement (m)	1.48	1.61
Safety factor : γ	1.50	1.70
Value of capacity check equation : γ	0.98	0.95
Total weight of steel (ton)	4,710	9,325
Total weight of concrete (ton)	27,600	0
Total weight (ton)	32,310	9,325

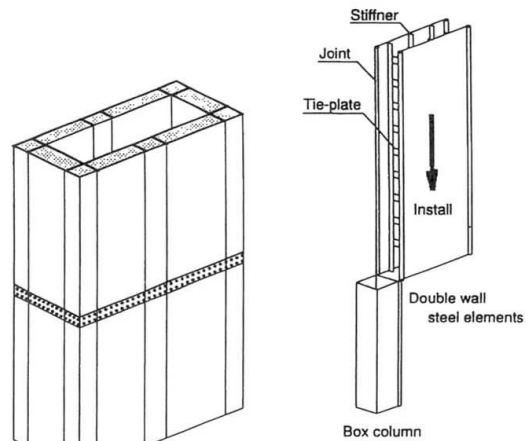


Fig.1 A new composite tower



Picture 1 Meiko Center Bridge Tower

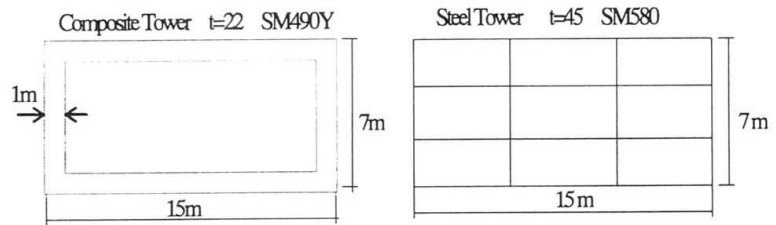


Fig.2 Cross sections of composite and steel towers

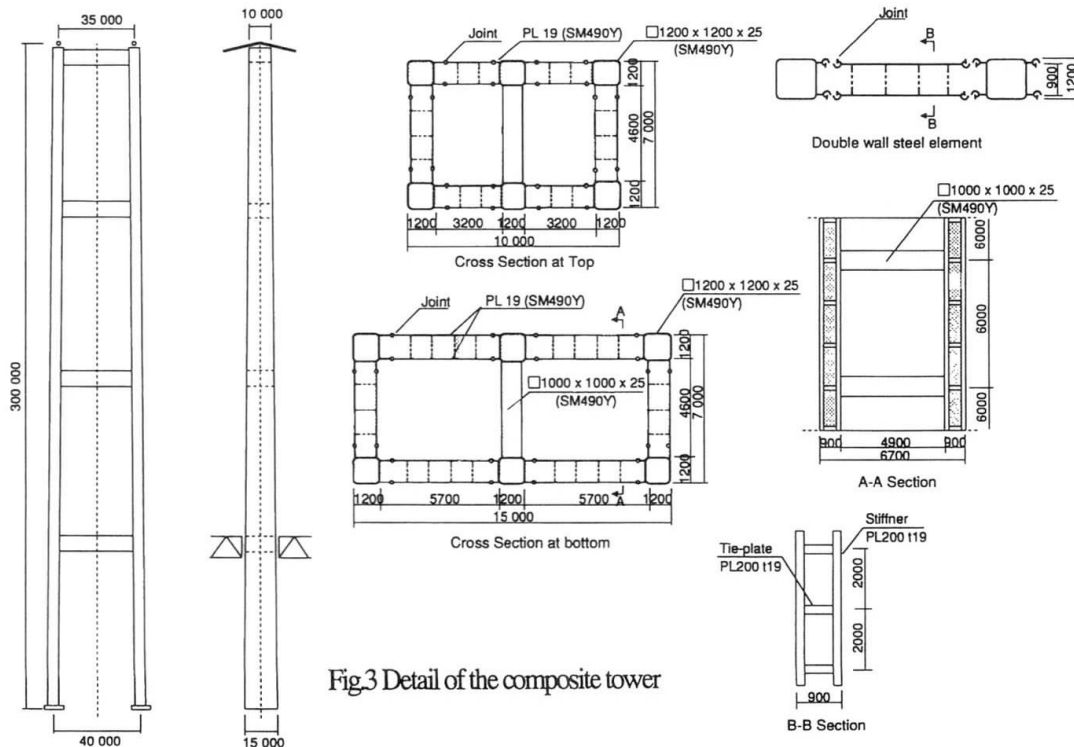


Fig.3 Detail of the composite tower