

Impressum

Objektyp: **Group**

Zeitschrift: **Bauen + Wohnen = Construction + habitation = Building + home : internationale Zeitschrift**

Band (Jahr): **6 (1952)**

Heft 1

PDF erstellt am: **17.07.2024**

Nutzungsbedingungen

Die ETH-Bibliothek ist Anbieterin der digitalisierten Zeitschriften. Sie besitzt keine Urheberrechte an den Inhalten der Zeitschriften. Die Rechte liegen in der Regel bei den Herausgebern.

Die auf der Plattform e-periodica veröffentlichten Dokumente stehen für nicht-kommerzielle Zwecke in Lehre und Forschung sowie für die private Nutzung frei zur Verfügung. Einzelne Dateien oder Ausdrucke aus diesem Angebot können zusammen mit diesen Nutzungsbedingungen und den korrekten Herkunftsbezeichnungen weitergegeben werden.

Das Veröffentlichen von Bildern in Print- und Online-Publikationen ist nur mit vorheriger Genehmigung der Rechteinhaber erlaubt. Die systematische Speicherung von Teilen des elektronischen Angebots auf anderen Servern bedarf ebenfalls des schriftlichen Einverständnisses der Rechteinhaber.

Haftungsausschluss

Alle Angaben erfolgen ohne Gewähr für Vollständigkeit oder Richtigkeit. Es wird keine Haftung übernommen für Schäden durch die Verwendung von Informationen aus diesem Online-Angebot oder durch das Fehlen von Informationen. Dies gilt auch für Inhalte Dritter, die über dieses Angebot zugänglich sind.

Ein Dienst der *ETH-Bibliothek*
ETH Zürich, Rämistrasse 101, 8092 Zürich, Schweiz, www.library.ethz.ch

<http://www.e-periodica.ch>



Single family House in Essex, Connecticut, USA (pages 11-13)

The principal unit of the dining and living-room faces the north-east. A large fireplace separates the two rooms. The entrance, accessible from the garage under a rising pergola, leads into a vestibule between the two rooms. Adjacent, to the west, are the two children's rooms; the parents' bedroom section lies towards the north with a common vestibule with a fireplace and two bed niches in which large wardrobes form the rear walls towards the centrally situated bathroom.

Week-end House at Carmel-by-the-Sea, California (page 14)

Henry Hill's weekend-house stands on a lot of only 15 x 30 m amid old trees and commands a view of the ocean. The intensive use of the garden as an outside spatial unit which enters the house in many places prevents the restriction in space from becoming optically noticeable.

Architect's House built in Stages (page 15)

The first stage comprised the two-story cube with two bedrooms and entrance on the garden level, and a studio with kitchen and bathroom on the upper floor. The living-room with a fireplace and closed veranda was built in the second stage and stepped by half a story.

Country House in Minneapolis (page 16)

This country-house stands upon a hill outside the Loop in Minneapolis. Facing south, it is the home of the architect who built part of it himself. A typical feature of the building is that it is confined to one room sub-divided by half-height partitions such as reed mats, low furniture etc.

Projected Country-house in the South of Switzerland (page 17)

The planned country-house will stand in a large garden away from the road. The north façade facing the road is closed and, together with the garden walls, screens the garden from the road. All rooms are wide open to the south and thus closely connected with the garden.

Physician's Home (page 18)

This small residence stands a little outside the village on a narrow country road. Both living-room and terrace are on the upper floor, the latter being directly accessible from the kitchen. The kitchen and dining-room blend into each other.

Residence at Locarno-Muralto (page 19)

This small residence stands amid old trees on a steep, narrow road in the Locarno suburb of Muralto. It accommodates a family of five and, in a self-contained two-room flat, the owner's mother. Maid's and guest's rooms, garage and garden room complete the project.

Apartment of a Manufacturer (pages 20-21)

In 1947, a machine manufacturer had the showrooms of his works enlarged and an apartment built into the ferro-concrete structure at one end of the building. Apart from the bedroom communicating with the bath, a private, intimate day-room was required and, separated from it, two guest-rooms.

A spacious vestibule with clothes closet for the guests is situated on the ground-floor, with access to the two-car garage. Open stairs lead to the two-story apartment above.

House with Studio (page 22)

A precise zoning programme and a free site in the town constituted the external factors for this project.

The rooms are arranged in such a manner that the studios are below and connected with the entrance. Above are the living rooms connected with the garden by terraces. At the end of the ramp and in the quietest section of the building are the bedrooms and the solarium necessary in a town.

Sale-room of Herman Miller Furniture Co., Los Angeles (pages 25-27)

This one-storey building erected for this particular purpose accommodates about a dozen individual room units. Wall elements rising to above door height and fixed to the ceiling by means of tubing constitute partitions. In day-time, light enters through two large sky-lights while adjustable twin lamps distributed over the entire area provide effective lighting at night.

Flowers and twigs are elements of decoration. A wall with photos and choice ceramic and glass ware, together with the textiles, complete the impression of freshness this sale-room creates.

4 x Knoll Associates in USA (pages 28-33)

Hans and Florence Knoll and their collaborators have recently opened their headquarters - offices, drawing office and spacious showrooms - on the 22nd floor of one of the most modern office buildings in New York. Within a short time there followed display and sales rooms in Chicago, Boston, Atlanta and Dallas. The relentless and uncompromising choice and the consequence of the two artists' creations have already been so successful that their work and exhibitions now determine the trend of the large furniture industry.

Rinascente Department Store, Milan (pages 34-38)

In recognition of the fact that changes in the furniture should accompany the change of the seasons and of the goods offered for sale in a department store with a view to achieving a maximum of clarity and attractiveness, the entire appointments have been designed on a small scale and, to some extent, standardized in their measurements. The greatest stress was laid upon a differentiation of the spatial arrangement of the individual floors, which were adapted to the type of goods they accommodate.

New Italian Chairs (page 39)

Rinaldo Marini has produced a new series of chairs, part of which can be stacked. Chromium-plated steel tubing frames, legs and arm-rests. The seats and back upholstery are partly bent wood and partly fabric covered rubber pads.

Verlag Bauen + Wohnen GmbH.
Herausgeber
Redaktion Bauen + Wohnen

Grafische Gestaltung
Umschlag
Inserate
Satz und Druck
Clichés
Papiere
Inseratenverwaltung
Administration, Expedition

Ausgabe Nr. 1, Februar 1952
Preise für die Schweiz:

Auslieferungsstellen im Ausland:
Belgien: Office Internationale de Librairie, Bruxelles, 184, rue de l'Hôtel-des-Monnaies
Columbia: Libreria Arquitécnica, Bruno Kreitner, Apartado aéreo 1533, Cali S. A.
Deutschland: Ausland-Zeitungshandel W. E. Saarbach, Frankenstraße 14, Köln-Junkersdorf
England: Swiss Publicity Office, 61, Woodland Rise, London N. 10

Liste der Fotografen
Hedrich-Blessing, Chicago - Ezra Stoller, New York - Robert Damora, New York - Rico Jenny, Tegna - O. Pfeifer SWB,

Zürich
Adolf Pfau
Dreikönigstr. 34, Tel. (051) 23 72 08
J. Schader, Architekt, Zürich
R. P. Lohse SWB, Zürich
R. P. Lohse SWB, Zürich
Entwurf R. P. Lohse SWB
G. Pfau jun.
Huber & Co. AG., Frauenfeld
W. Nievergelt, Zürich
Papierfabrik Biberist

Frauenfeld, Promenadenstraße 16
Postcheck VIII c 10

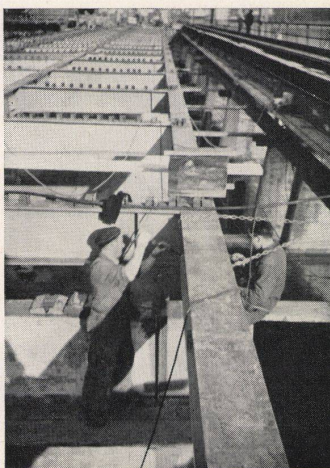
Abonnement für 6 Nummern Fr. 26.-
Einzelnummer Fr. 4.80

Frankreich: Vincent, Fréal & Cie., rue des Beaux-Arts 4, Paris VI
Israel: Internationale Booksellers A. Lichtenhayn - H. H. Latz, Tel-Aviv, 85, Allenby Rd., P. O. B. 1030
Italien: A. Salto, Libreria artistica, Milano, Via Santo Spirito 14
Luxemburg: Mess. Paul Kraus, Luxembourg, 29, rue Joseph Junck
Österreich: Morawa & Cie., Wien
USA: Wittenborn & Cie., 38 East 57 th Street, New York

Luzern - Charles Eames, Venice/Calif. - Idaka, Chicago - Arthur S. Siegel - Fototecnica Fortunati, Milano - Hans Finsler SWB, Zürich.

Bernhard Meyer

Brücken-, Hoch- und Industriebauten · Masten · Türen für Wohn- und Geschäftshäuser, in Eisen und Metall, einfache und Doppelverglasung · Fenster in allen Baumaterialien und Konstruktionen für Wohn-, Fabrik- und Kirchenbauten, in einfacher und Doppelverglasung · Schaufensteranlagen in Leichtmetall eloxiert



Solothurn

dipl. Ing. E. T. H.

Eisenbau und Schlosserei

Patriotenweg 8 · Tel. 065 / 2 35 89

Erstklassige Referenzen

Reparaturen prompt und fachgemäß

Eigenes Ingenieur-Bureau