

# Obtainment of some new intergeneric and interspecific hybrids between wild Brassiceae

Autor(en): **Sobrino Vesperinas, Eduardo**

Objektyp: **Article**

Zeitschrift: **Candollea : journal international de botanique systématique = international journal of systematic botany**

Band (Jahr): **43 (1988)**

Heft 2

PDF erstellt am: **18.07.2024**

Persistenter Link: <https://doi.org/10.5169/seals-879752>

## **Nutzungsbedingungen**

Die ETH-Bibliothek ist Anbieterin der digitalisierten Zeitschriften. Sie besitzt keine Urheberrechte an den Inhalten der Zeitschriften. Die Rechte liegen in der Regel bei den Herausgebern.

Die auf der Plattform e-periodica veröffentlichten Dokumente stehen für nicht-kommerzielle Zwecke in Lehre und Forschung sowie für die private Nutzung frei zur Verfügung. Einzelne Dateien oder Ausdrucke aus diesem Angebot können zusammen mit diesen Nutzungsbedingungen und den korrekten Herkunftsbezeichnungen weitergegeben werden.

Das Veröffentlichen von Bildern in Print- und Online-Publikationen ist nur mit vorheriger Genehmigung der Rechteinhaber erlaubt. Die systematische Speicherung von Teilen des elektronischen Angebots auf anderen Servern bedarf ebenfalls des schriftlichen Einverständnisses der Rechteinhaber.

## **Haftungsausschluss**

Alle Angaben erfolgen ohne Gewähr für Vollständigkeit oder Richtigkeit. Es wird keine Haftung übernommen für Schäden durch die Verwendung von Informationen aus diesem Online-Angebot oder durch das Fehlen von Informationen. Dies gilt auch für Inhalte Dritter, die über dieses Angebot zugänglich sind.

# Obtainment of some new intergeneric and interspecific hybrids between wild Brassiceae

EDUARDO SOBRINO VESPERINAS

## ABSTRACT

SOBRINO VESPERINAS, E. (1988). Obtainment of some new intergeneric and interspecific hybrids between wild Brassiceae. *Candollea* 43: 499-504. In English, English and Spanish abstracts.

Eleven new intergeneric and interspecific hybrids involving the genera *Diplotaxis*, *Brassica*, *Hutera*, *Rhynchosinapis*, *Eruca*, and *Moricandia*, are briefly described, indicating their general characters and fertility, and also the index "number of viable seeds/pollinated flower", on the experimental hybridations. The pollen grains of these F<sub>1</sub> hybrids have been studied morphologically by SEM. Pollen grains of *M. suffruticosa* (Desf.) Coss. & Durieu × *M. arvensis* (L.) DC. and *D. tenuifolia* (L.) DC. × *D. muralis* (L.) DC., acetic carmine positive, present strong anomalies and diverge from the *Cruciferae* general type.

## RESUMEN

SOBRINO VESPERINAS, E. (1988). Obtención de nuevos híbridos intergenéricos e interspecíficos en Brassiceae. *Candollea* 43: 499-504. En inglés, resúmenes en inglés y español.

Se describen brevemente once nuevos híbridos intergenéricos e interespecíficos, obtenidos utilizando los géneros *Diplotaxis*, *Brassica*, *Hutera*, *Rhynchosinapis*, y *Moricandia*, con indicación de sus caracteres generales y fertilidad, así como del índice, "número de semillas viables/flor polinizada", en las hibridaciones experimentales. En estos híbridos F<sub>1</sub> se ha realizado un estudio morfológico del grano de polen, mediante SEM. Los granos de polen de *M. suffruticosa* (Desf.) Coss. & Dur. × *M. arvensis* (L.) DC. y *D. tenuifolia* (L.) DC. × *D. muralis* (L.) DC., acetocarmín positivos, muestran importantes anomalías, que divergen del tipo general, presente en la familia *Cruciferae*.

## Introduction

The tribe *Brassiceae* include the most important Crucifer crops. This is the reason why the potentialities for genetic exchange between its members has attracted much attention since long.

The first hybrid artificially obtained (HERBERT, 1824 in SIKKA, 1940) was done by crossing *Brassica napus* L. and *B. campestris* L. the greater part of later hybrid studies have been carried out with *Brassica* and only a few of its closest allies (*Sinapis*, *Raphanus*, etc.). Only starting with the work of HARBERD (1972), a wider array of genera is being used. More recently, QUIROS & al. (1986) have studied the hibridation possibilities between crops belonging to *Brassica* and some wild species with  $x = 7$ .

The present work increases the available information in this field, with the presentation of some additional hybrids and their peculiarities. The used species grow often in the Mediterranean area, and some times they have populations, which are near geographically.

## Material and methods

The plant material used derives from the seed collection which is maintained by the Department of Biology in the Escuela T. S. de Ingenieros Agrónomos, Universidad Politécnica, 28040

<i>Cross combination</i>	<i>Germination</i>	<i>Pollen fertility</i>	<i>Viable seeds pollinated flower</i>
<i>Diplotaxis tenuifolia</i> (L.) DC. (GC-0980) × <i>D. pitardiana</i> Maire . . . (GC-1931)	33	20(1)	5.90
<i>D. tenuifolia</i> (L.) DC. (GC-0980) × <i>D. muralis</i> (L.) DC. (GC-0980)	67	97(2)	0.67
<i>Eruca pinnatifida</i> (Desf.) Pomel (GC-1813) × <i>Brassica repanda</i> . . . (Willd.) DC. subsp. <i>nudicaulis</i> (Lag.) Heywood (GC-0905)	6	-(4)	6.00
<i>Hutera rupestris</i> Porta (GC-1577) × <i>H. leptocarpa</i> Glez-Albo . . . . (GC-1166)	100	94	0.10
<i>H. leptocarpa</i> Glez-Albo (GC-1166) × <i>H. rupestris</i> Porta (GC-1577)	67	99	0.31
<i>H. leptocarpa</i> Glez-Albo (GC-1166) × <i>Rhynchosinapis longirostra</i> . . (Boiss.) Heywood (GC-1175)	25	93	1.44
<i>Moricandia spinosa</i> Pomel (GC-1845) × <i>M. suffruticosa</i> (Desf.) . . . Coss. & Dur. (GC-1833)	98	93	7.70
<i>M. spinosa</i> Pomel (GC-1845) × <i>M. nitens</i> (Viviani) Dur. & Barr. . . (GC-1833)	68	68(3)	1.33
<i>M. suffruticosa</i> (Desf.) Coss. & Dur. (GC-1833) × <i>M. arvensis</i> (L.) DC. (GC-0863)	70	54(3)	1.55
<i>M. arvensis</i> (L.) DC. (GC-0863) × <i>M. nitens</i> (Viviani) Dur. & Barr. (GC-2129)	55	82	3.14
<i>M. nitens</i> (Viviani) Dur. & Barr. (GC-2129) × <i>M. arvensis</i> (L.) DC. (GC-0863)	67	99	0.22

- (1) The fertile pollen was normal, and the sterile had normal morphology with smaller size.
- (2) All fertile grains of pollen showed an anomalous structure.
- (3) The sterile pollen grains were fully deformed, and the fertile partially showed an anomalous structure.
- (4) Plants died in the rosette stage.

Table 1. — Characteristics related with the viability on some original hybrids obtained between wild species in the tribe *Brassicaceae*.

Madrid (GOMEZ-CAMPO & al., 1978). The number and anagram of each sample within that collection is shown in the Table 1.

Parental plants were grown in pots under glasshouse conditions. Crossing was made during the spring by hand emasculation and bud pollination. Morphological characters of the hybrids in relation to their parents were studied in the second year. Pollen samples were observed by optical and scanning electron microscopic techniques.

The number of flowers pollinated was never very high, and it varied widely (from 15 to 30) according to each case.

Nomenclature is according to TUTIN & al. (1964).

## Results

Table 1 summarizes the data obtained from our experimental crosses. Only those combinations that we believe to be new have been included. Each hybrid combination is commented below:

### ***Diplotaxis tenuifolia* (L.) DC. × *Diplotaxis pitardiana* Maire**

The hybrids were vigorous plants, with very low pollen fertility (20%) and completely sterile under conditions of free pollination. The study of pollen samples with SEM detected a part of completely normal pollen, while the sterile grains showed a normal morphology but were smaller in size (Fig. 1). The general appearance of the hybrids as intermediate between the parents.

### ***Diplotaxis tenuifolia* (L.) DC. × *Diplotaxis muralis* (L.) DC.**

This combination was first carried out in the inverse direction by HARBERD & McARTHUR (1972). In our case, the hybrids were morphologically similar to the father, *D. muralis*. The fertility

of pollen grains, stained with carmine acetic, was 97%, but they all showed deformations when observed with SEM (Fig. 2).

Under free pollination the hybrids produced few seeds.

***Eruca pinnatifida*** (Desf.) Pomel × ***Brassica repanda*** (Willd.) DC. subsp. ***nudicaulis*** (Lag.) Heywood.

Five hybrid plants were obtained, but they had limited vigour. Their morphological characters were intermediate between both parents. Unfortunately all plants died in the rosette stage when they had 7 to 9 leaves, though they did not show any chlorophyll deficiency, nor morphological anomalies, except a poor vigour.

***Hutera rupestris*** Porta × ***Hutera leptocarpa*** Glez. Albo

***Hutera leptocarpa*** Glez. Albo × ***Hutera rupestris*** Porta

***Hutera leptocarpa*** Glez. Albo × ***Rhynchosinapis longirostra*** (Boiss.) Heywood

The hybrids showed normal vigour and their seed fertility was full. Other cross combinations between more distant taxa of both genera have been reported by HARBERD & McARTHUR (1972). The authors found 12 bivalents ( $n = 12$ ) in a 96% of the studied metaphases. Further studies on the inheritance of the morphological traits in the fruit would be of interest, as important differences exist in the fruit morphology between *Hutera* and *Rhynchosinapis*.

***Moricandia spinosa*** Pomel × ***M. suffruticosa*** (Desf.) Coss. & Durieu

***Moricandia spinosa*** Pomel × ***M. nitens*** (Viv.) Dur. & Barr.

***Moricandia suffruticosa*** (Desf.) Coss. & Durieu × ***M. arvensis*** (L.) DC.

***Moricandia arvensis*** (L.) DC. × ***M. nitens*** (Viv.) Dur. & Barr.

The cross combination between these species produced vigorous hybrids. The seed fertility was high in general. Only in the combination *M. suffruticosa* × *M. arvensis* was the sterility very high and the pollen grains observed with the SEM had a large amount of anomalous forms (Figs. 3 and 4), though in many cases were acetic carmine positive.

Several other crosses involving *Moricandia moricandioides* (Boiss.) Heywood as a parent were totally sterile and have not been included in the Table 1.

### Discussion

The female parents of the genera contained in the table usually have a high number of seeds per pod (15-60) with the only exception of *Hutera* which has 6-12. This must be taken into account to interpret the index "viable seeds/pollinated flower", which is related to the efficiency of artificial crossings.

HARBERD & McARTHUR (1972) suggest that *D. muralis* is an allotetraploid derived from *D. tenuifolia* and *D. viminea*. As *D. muralis* can be used to produce androsterile lines in plant breeding, the hybrids with related species involve some applied interest.

The hybrid combination *Eruca pinnatifida* × *Brassica repanda* subsp. *nudicaulis* suggests the existence of affinities between both taxa. U & al. (1937) obtained a hybrid between *Eruca sativa* × *Brassica oleracea*. It must be taken into account that *B. repanda* is a taxon with very special characteristics within the genus, so that it perhaps shows the maximum morphological affinities with *Eruca*.

The genetic exchange between the species of *Hutera* and between one of them and *Rhynchosinapis longirostra* is very easy. Our results show clearly that their isolation is more related to geographical barriers than to genetic mechanisms. The idea of a single generic taxon like was maintained by GOMEZ-CAMPO (1977), is therefore supported, though the nomenclatural priority is not for *Hutera* but for *Coincya* (GREUTER & RAUS, 1983).

In the formation of F<sub>1</sub> hybrid combinations between the studied species of *Moricandia* no barriers seem to exist, except in the hybrids involving *M. moricandioides*, which is isolated within

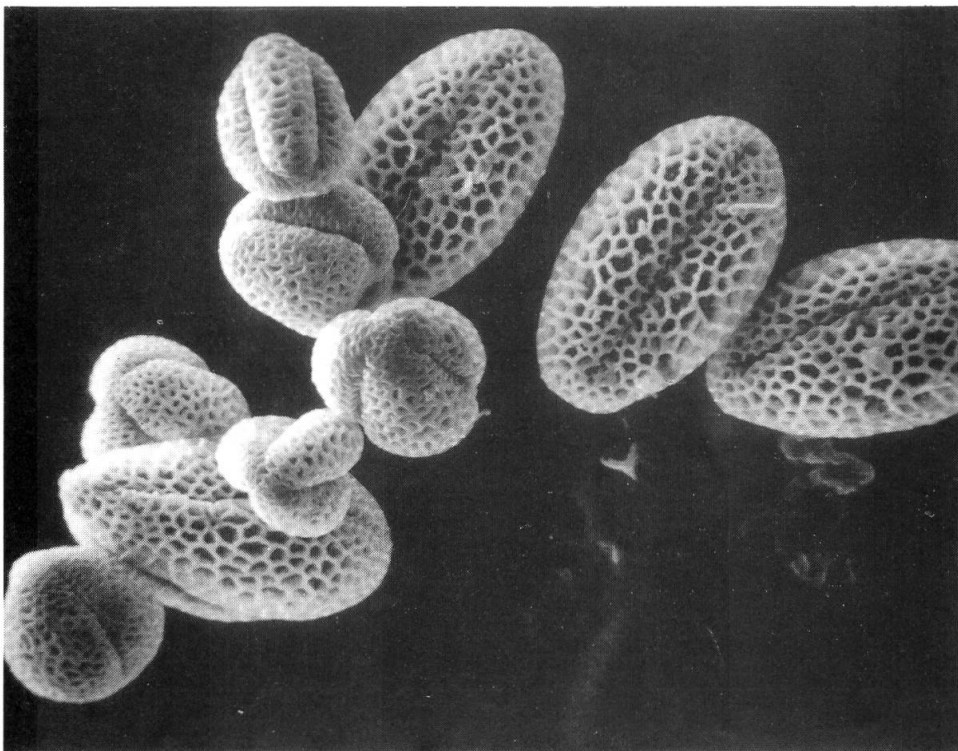
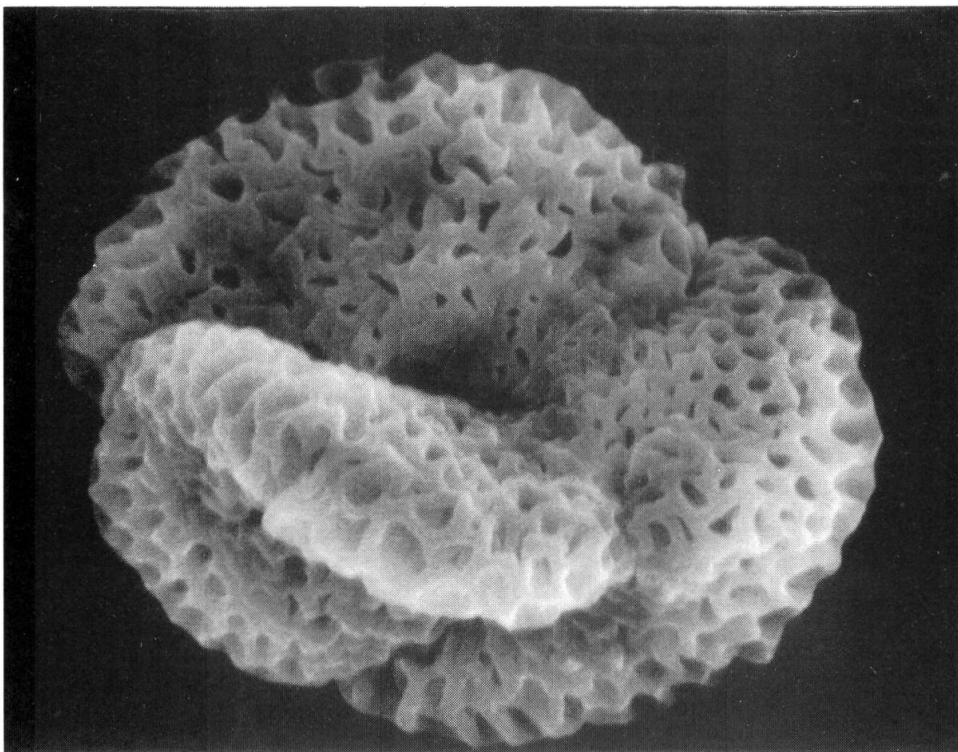


Fig. 1. — *Diplotaxis tenuifolia* (L.) DC. × *Diplotaxis pitardiana* Maire.  
Normal and sterile grains of pollen (× 1400). SEM photograph by M. E. Tortosa.

Fig. 2. — *Diplotaxis tenuifolia* (L.) DC. × *Diplotaxis muralis* (L.) DC.  
Deformed grain of pollen (× 6000). SEM photograph by M. E. Tortosa.



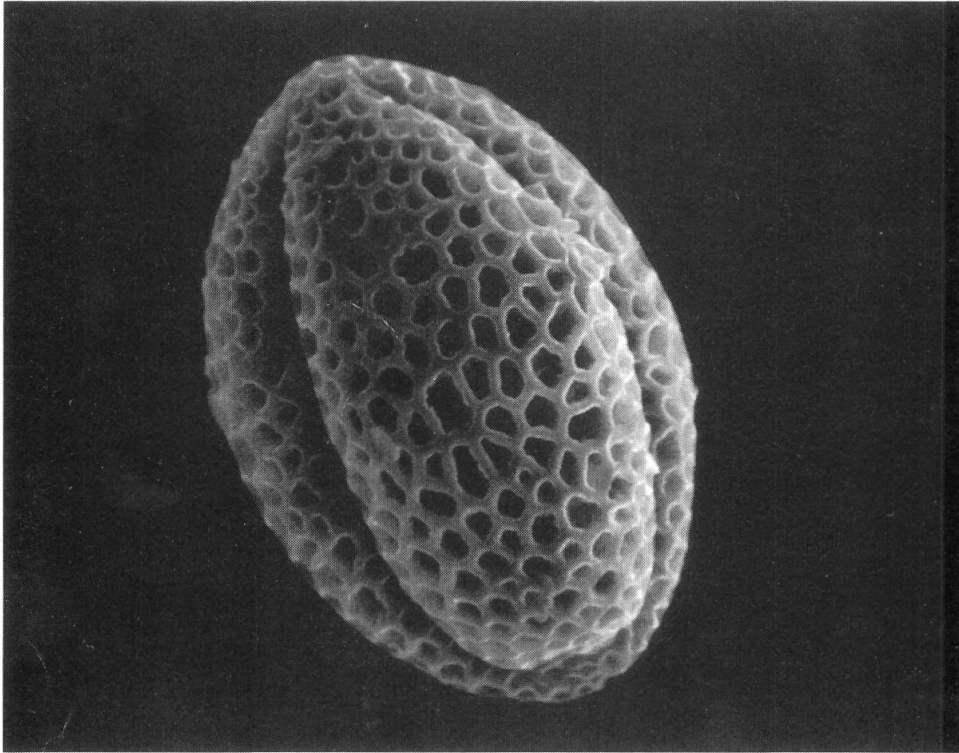
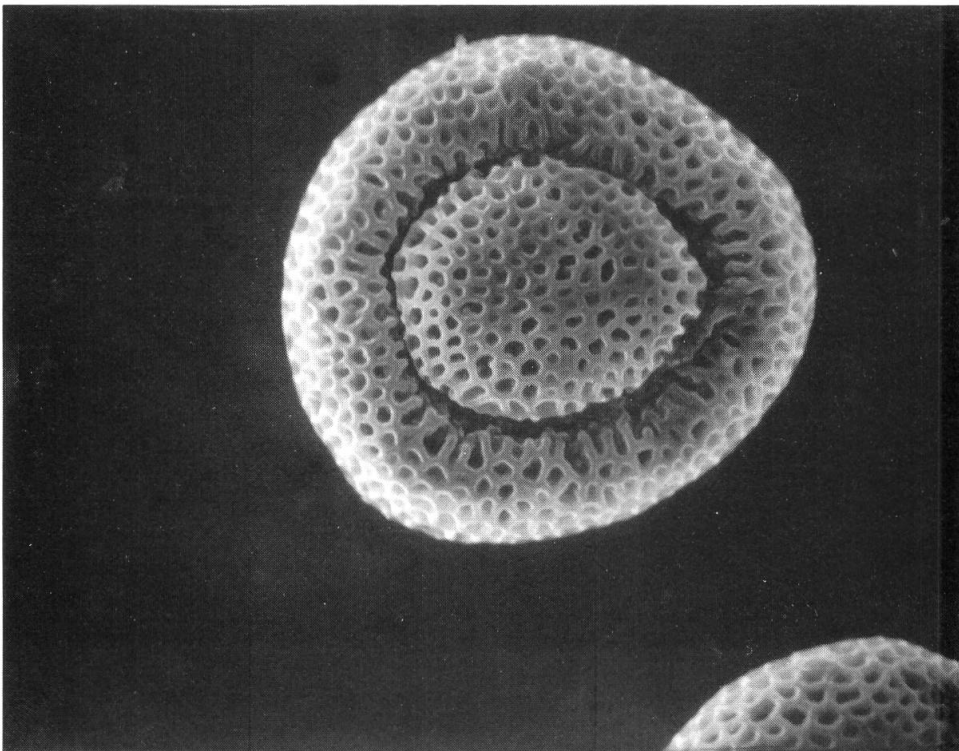


Fig. 3. — *Moricandia suffruticosa* (Desf.) Coss. & Durieu.  
Normal grain of pollen ( $\times 4000$ ). SEM photograph by M. E. Tortosa.

Fig. 4. — *Moricandia suffruticosa* (Desf.) Coss. & Durieu  $\times$  *M. arvensis* (L.) DC.  
Anomalous grain of pollen ( $\times 3000$ ). SEM photograph by M. E. Tortosa.



the genus. The genetic exchange is possible in the produced F<sub>1</sub> hybrids, except in the combination *M. suffruticosa* × *M. arvensis*. Our results are noteworthy from the point of view that a polyploid series where *M. spinosa* is 6 *x*, *M. suffruticosa* 4 *x*, and all others are 2 *x* has been reported for this genus (SOBRINO, 1978).

## REFERENCES

- GOMEZ-CAMPO, C. (1977). Studies on Cruciferae II. New names for Rhynchosinapis species under *Hutera*. *Anal. Inst. Bot. Cavanilles* 34: 151-155.
- GOMEZ-CAMPO, C. & al. (1978). *A germ plasm collection Cruciferae*. Inst. Nac. Invest. Agrarias (Ministerio de Agricultura), Madrid.
- GREUTER, W. & T. RAUS (1983). Med-Checklist Notulae, 7. *Willdenowia* 13: 86-88.
- HARBERD, D. J. & E. D. McARTHUR (1972). The chromosome constitution of *Diplotaxis muralis* (L.) DC. *Watsonia* 9: 131-135.
- QUIROS, C. F., O. OCHOA & S. F. KIANIAN (1986). Hybridization of two cultivated Brassica species with wild relatives of *x* = 7 chromosomes Cruciferae. *Newsletter* 11: 16.
- SIKKA, S. M. (1940). Cytogenetics of Brassica hybrids and species. *J. Genet.* 40: 441-509.
- SOBRINO, E. (1978). Serie cromosómica euploide en el género *Moricandia* (Cruciferae). *Anal. Inst. Bot. Cavanilles* 35: 411-416.
- TUTIN, T. G. & al. (eds.) (1964). *Flora Europaea* 1. Cambridge.
- U, N., T. NAGAMATSU & U. MIZUSHIMA (1937). A report on meiosis in the two hybrids, *Brassica alba* Rabh. × *B. oleracea* L. and *Eruca sativa* Lam. × *B. oleracea* L. *Cytologic, Fujii Jub.* vol.: 437-441.