

Passiflora farneyi, a new species of Passifloraceae, subgenus Passiflora, series Serratifoliae, for Brazil

Autor(en): **Pessoa, Solange de V. A. / Cervi, Armando Carlos**

Objektyp: **Article**

Zeitschrift: **Candollea : journal international de botanique systématique =
international journal of systematic botany**

Band (Jahr): **47 (1992)**

Heft 2

PDF erstellt am: **22.07.2024**

Persistenter Link: <https://doi.org/10.5169/seals-879593>

Nutzungsbedingungen

Die ETH-Bibliothek ist Anbieterin der digitalisierten Zeitschriften. Sie besitzt keine Urheberrechte an den Inhalten der Zeitschriften. Die Rechte liegen in der Regel bei den Herausgebern.

Die auf der Plattform e-periodica veröffentlichten Dokumente stehen für nicht-kommerzielle Zwecke in Lehre und Forschung sowie für die private Nutzung frei zur Verfügung. Einzelne Dateien oder Ausdrucke aus diesem Angebot können zusammen mit diesen Nutzungsbedingungen und den korrekten Herkunftsbezeichnungen weitergegeben werden.

Das Veröffentlichen von Bildern in Print- und Online-Publikationen ist nur mit vorheriger Genehmigung der Rechteinhaber erlaubt. Die systematische Speicherung von Teilen des elektronischen Angebots auf anderen Servern bedarf ebenfalls des schriftlichen Einverständnisses der Rechteinhaber.

Haftungsausschluss

Alle Angaben erfolgen ohne Gewähr für Vollständigkeit oder Richtigkeit. Es wird keine Haftung übernommen für Schäden durch die Verwendung von Informationen aus diesem Online-Angebot oder durch das Fehlen von Informationen. Dies gilt auch für Inhalte Dritter, die über dieses Angebot zugänglich sind.

Passiflora farneyi, a new species of Passifloraceae, subgenus Passiflora, series Serratifoliae, for Brazil

SOLANGE DE V. A. PESSOA
&
ARMANDO CARLOS CERVI

ABSTRACT

PESSOA, S. DE V. A. & A. C. CERVI (1992). *Passiflora farneyi*, a new species of Passifloraceae, subgenus *Passiflora*, series *Serratifoliae*, for Brazil. *Candollea* 47: 631-634. In English, English and Portuguese abstracts.

A new species of *Passiflora* is described for the State of Rio de Janeiro, Brazil. *Passiflora farneyi* belongs to the subgenus *Passiflora*, series *Serratifoliae*. This species is found only on the coast of Rio de Janeiro (Itaipú to Cabo Frio). *Passiflora farneyi* is closely to *Passiflora malacophylla* Masters and *Passiflora bahiensis* Klotzsch. The main differences are in the number of flowers, shape of the bracts and number of corona filament series. An artificial key for the Brazilian species of the subgenus *Passiflora*, series *Serratifoliae*, is given. *Passiflora farneyi* is dedicated to Biologist Cyl Farney from the Rio de Janeiro Botanical Garden, who collected the type specimen. The holotype is deposited in the Rio de Janeiro Botanical Garden (RB).

RESUMO

PESSOA, S. DE V. A. & A. C. CERVI (1992). *Passiflora farneyi*, uma nova espécie de Passifloraceae, subgênero *Passiflora*, série *serratifoliae*, para o Brasil. *Candollea* 47: 631-634. Em Inglês, resumos em Inglês e Português.

É descrita para o Estado do Rio de Janeiro uma nova espécie de *Passiflora*, do subgênero *Passiflora*, série *Serratifoliae*: *Passiflora farneyi*. Até o momento a distribuição geográfica desta espécie está restrita a áreas litorâneas do estado. *Passiflora farneyi* revela-se próxima a *Passiflora malacophylla* Masters e *Passiflora bahiensis* Klotzsch, situando as principais diferenças no número de flores, forma das brácteas e número de séries dos filamentos da corona. Foi efetuada uma chave artificial para as espécies brasileiras do subgênero *Passiflora*, série *Serratifoliae*. *Passiflora farneyi* é dedicada ao biólogo Cyl Farney, do Jardim Botânico do Rio de Janeiro, coletor do exemplar "typus". O holotipus está depositado no herbário do Jardim Botânico do Rio de Janeiro (RB).

***Passiflora farneyi* Pessoa, S. V. A. & A. C. Cervi, spec. nov. (Fig. 1 e 2).**

Liana dense pilosa, caule striato et tereti. Petiolus supra medium duabus glandulis sessilibus instructus. Folia integra, ovata, marginibus glandulosis et serratis. Pedunculi solitari et axillares. Bractee 3, verticillatae spathulatae vel laceolatae, marginibus glandulosis et serratis basi duabus glandulis ornatae. Filamenta coronae alba, in 8 seriebus disposita, duas series liguliformes et intimae filiformes; filamenta octovae seriei in basi connata. Operculum eretum, supra medium filamentosum. Fructus bacca, globosus, pubescens.

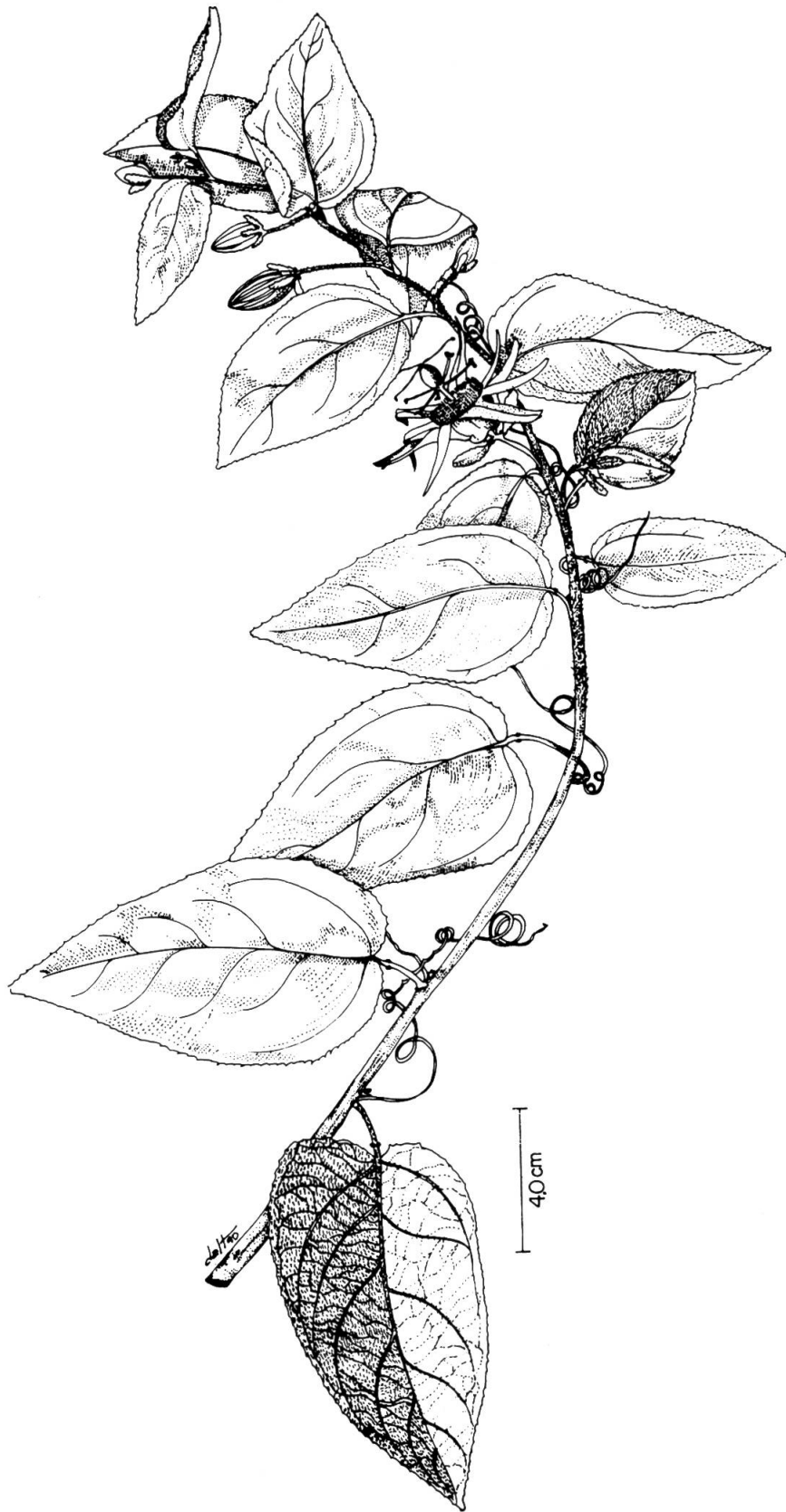


Fig. 1. — *Passiflora farneyi*: habitus (RB 279.490).

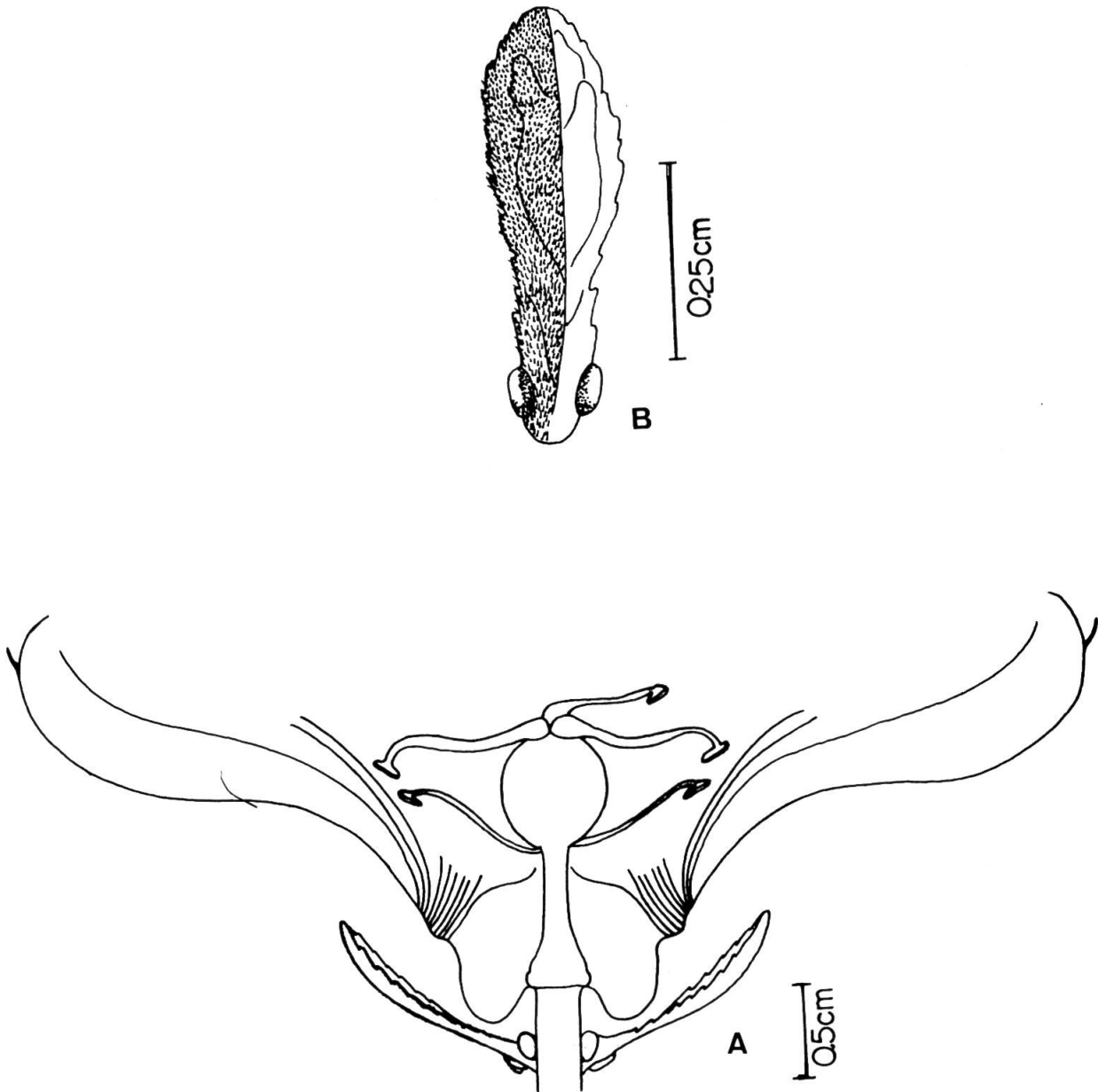


Fig. 2. — *Passiflora farneyi*: A, schematic detail of the flower; B, detail of the bract.

Vine, densely hairy, stem cylindrical, striate. Stipules linear-subulate, with marginal glands from 0.2-0.6 cm long, deciduous. Petiole 0.6-3.0 cm long, upper third with 2 sessile glands. Leaves simple, entire, ovate, membranous, 4.5-11.0 cm long, 2.5-6.0 cm wide, apex acute to obtuse, base cordate, 3 nerved, margin serrate, glandular, velutinous above and below, more densely hairy below. Tendrils axillary, robust. Peduncles axillary, solitary, 1.2-3.7 cm long not jointed. Bracts 3, verticillate, located 0.3-0.5 cm from flower base, spatulate to lanceolate, with 2 basal glands, margins serrate, glandular. Flowers white, ca. 5.0 cm in diameter when fully opened. Hypanthium campanulate, 0.2-0.5 cm hairy. Sepals oblong-lanceolate, 1.7-2.7 cm long, 0.5-1.0 cm wide, pubescent, awn 0.1-0.3 cm long, located 2.5 cm from apex. Petals 1.4-2.5 cm long, 0.5-0.6 cm wide, glabrous. Corona filaments in 8 series, white; outer 2 ligulate, 0.8-1.4 cm long; 3rd to 7th filiform, 0.30-0.45 cm long; 8th filiform, 0.40-0.55 cm long, united at base. Operculum erect, 0.4-0.7 cm high, upper third filamentous. Limen annular. Ovary ovoid, covered with whitish hairs. Fruit globose berry, 3.0-3.5 cm in diameter, pubescent. Seeds ovate, 0.5 mm long, 0.3 mm wide, brownish, foveolate.

Habitat. — Brazil, State of Rio de Janeiro, Municipality of Saquarema, Restinga de Ipitangas, in "restinga" (beach ridge) forest, near Vilatur Saquarema. Leg. C. Farney 2192, B. Rapoport & M. F. Freitas, 25.11.1988. Holotype RB 279.490; isotype UPCM, MBM, C, BM.

Artificial key for identifying the Brazilian species of *Passiflora* subgenus *Passiflora* series *Serratifoliae*.

- 1a. Flowers in clusters **P. bahiensis**
 1b. Flowers solitary 2
 2a. Bracts ovate to oblong. Corona filaments in 6 series, not united . . . **P. malacophylla**
 2b. Bracts spatulate to lanceolate. Corona filaments in 8 series, the innermost united at base
P. farneyi

Observation. — *Passiflora farneyi* Pessoa, S. V. A. & A. C. Cervi belongs to the subgenus *Passiflora*, series *Serratifoliae* and is closely related to *Passiflora malacophylla* Masters and *Passiflora bahiensis* Klotzsch in its vegetative morphology. It can be distinguished from *P. bahiensis* by its solitary flowers and from *P. malacophylla* by its spatulate to lanceolate bracts and the more numerous corona filaments, with the innermost series basally united.

The authors dedicate this species to Cyl Farney C. de Sa, a biologist at the Rio de Janeiro Botanical Garden, who collected the type specimen.

REFERENCES

- KILLIP, E. P. (1938). The American species of Passifloraceae. *Field Mus. Bot., Ser.* 19: 377-378.
 KLOTZSCH, J. F. (1840). *Passiflora bahiensis*. In: *Linnaea* 14: 293.
 MASTERS, M. T. (1872). Passifloraceae. In: MARTIUS, *Fl. Bras.* 13: 604, tab. 118.