

Planches

Objektyp: **Group**

Zeitschrift: **Cahiers d'archéologie romande**

Band (Jahr): **64 (1995)**

PDF erstellt am: **29.06.2024**

Nutzungsbedingungen

Die ETH-Bibliothek ist Anbieterin der digitalisierten Zeitschriften. Sie besitzt keine Urheberrechte an den Inhalten der Zeitschriften. Die Rechte liegen in der Regel bei den Herausgebern.

Die auf der Plattform e-periodica veröffentlichten Dokumente stehen für nicht-kommerzielle Zwecke in Lehre und Forschung sowie für die private Nutzung frei zur Verfügung. Einzelne Dateien oder Ausdrucke aus diesem Angebot können zusammen mit diesen Nutzungsbedingungen und den korrekten Herkunftsbezeichnungen weitergegeben werden.

Das Veröffentlichen von Bildern in Print- und Online-Publikationen ist nur mit vorheriger Genehmigung der Rechteinhaber erlaubt. Die systematische Speicherung von Teilen des elektronischen Angebots auf anderen Servern bedarf ebenfalls des schriftlichen Einverständnisses der Rechteinhaber.

Haftungsausschluss

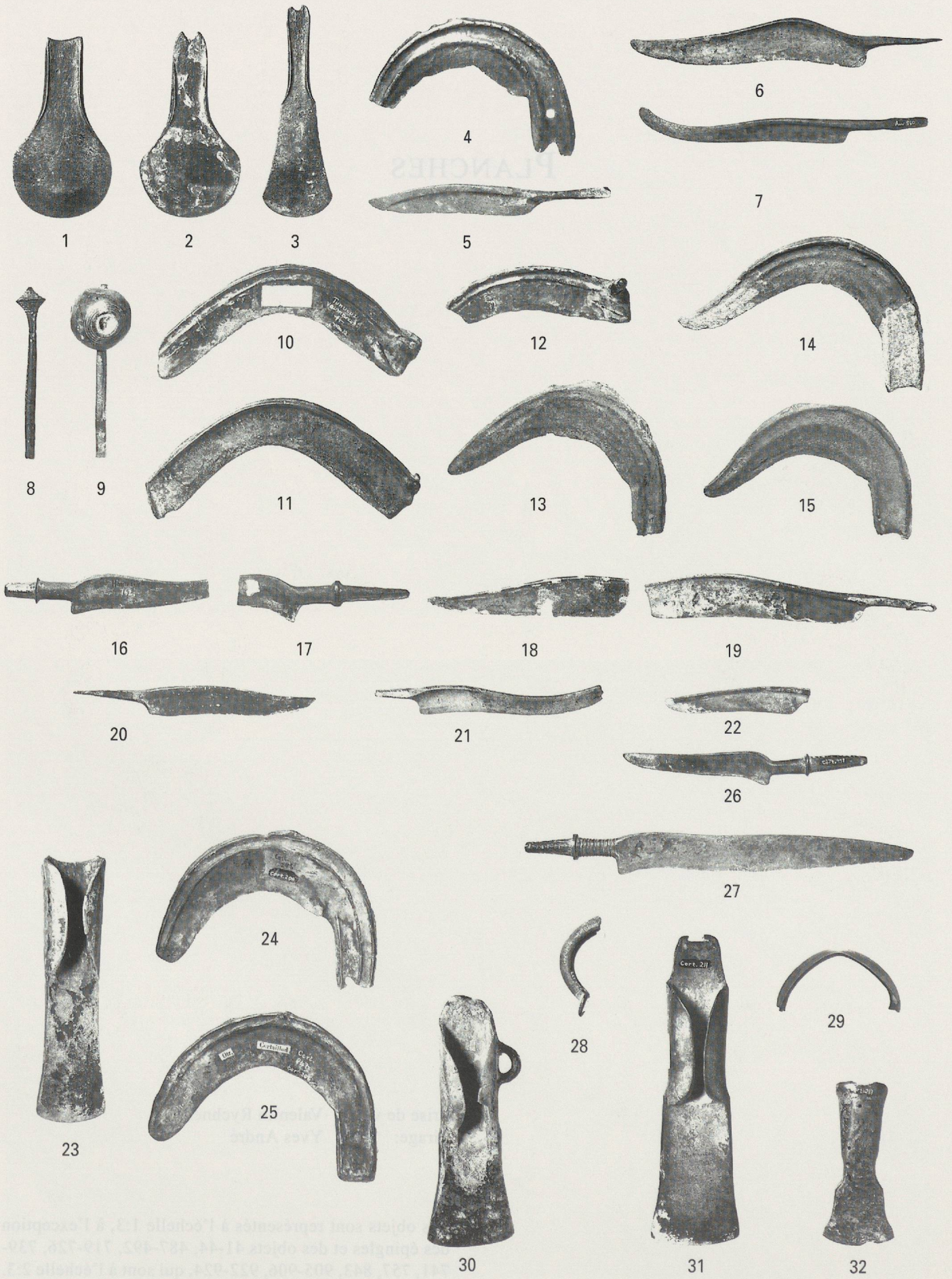
Alle Angaben erfolgen ohne Gewähr für Vollständigkeit oder Richtigkeit. Es wird keine Haftung übernommen für Schäden durch die Verwendung von Informationen aus diesem Online-Angebot oder durch das Fehlen von Informationen. Dies gilt auch für Inhalte Dritter, die über dieses Angebot zugänglich sind.

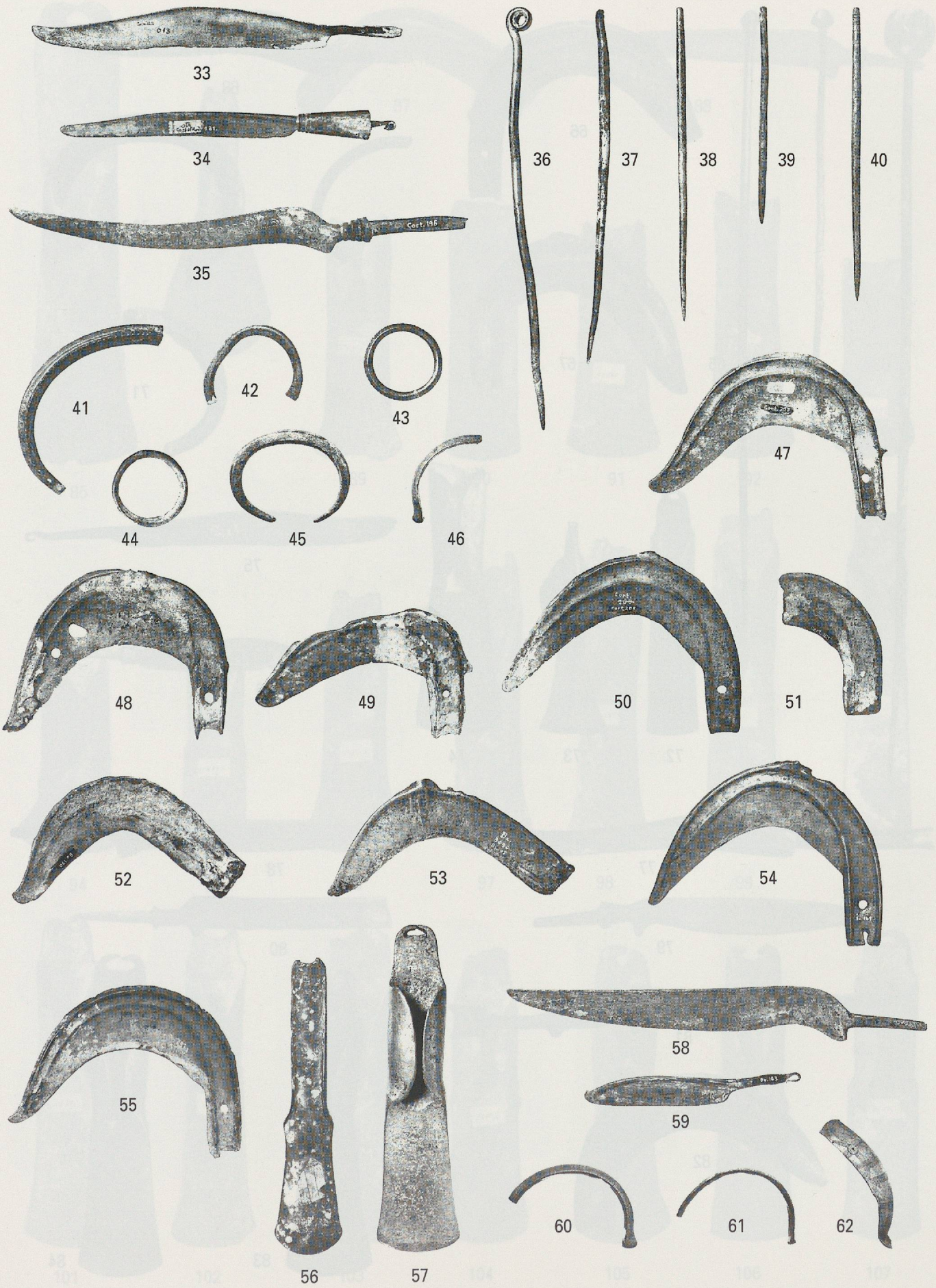
PLANCHES

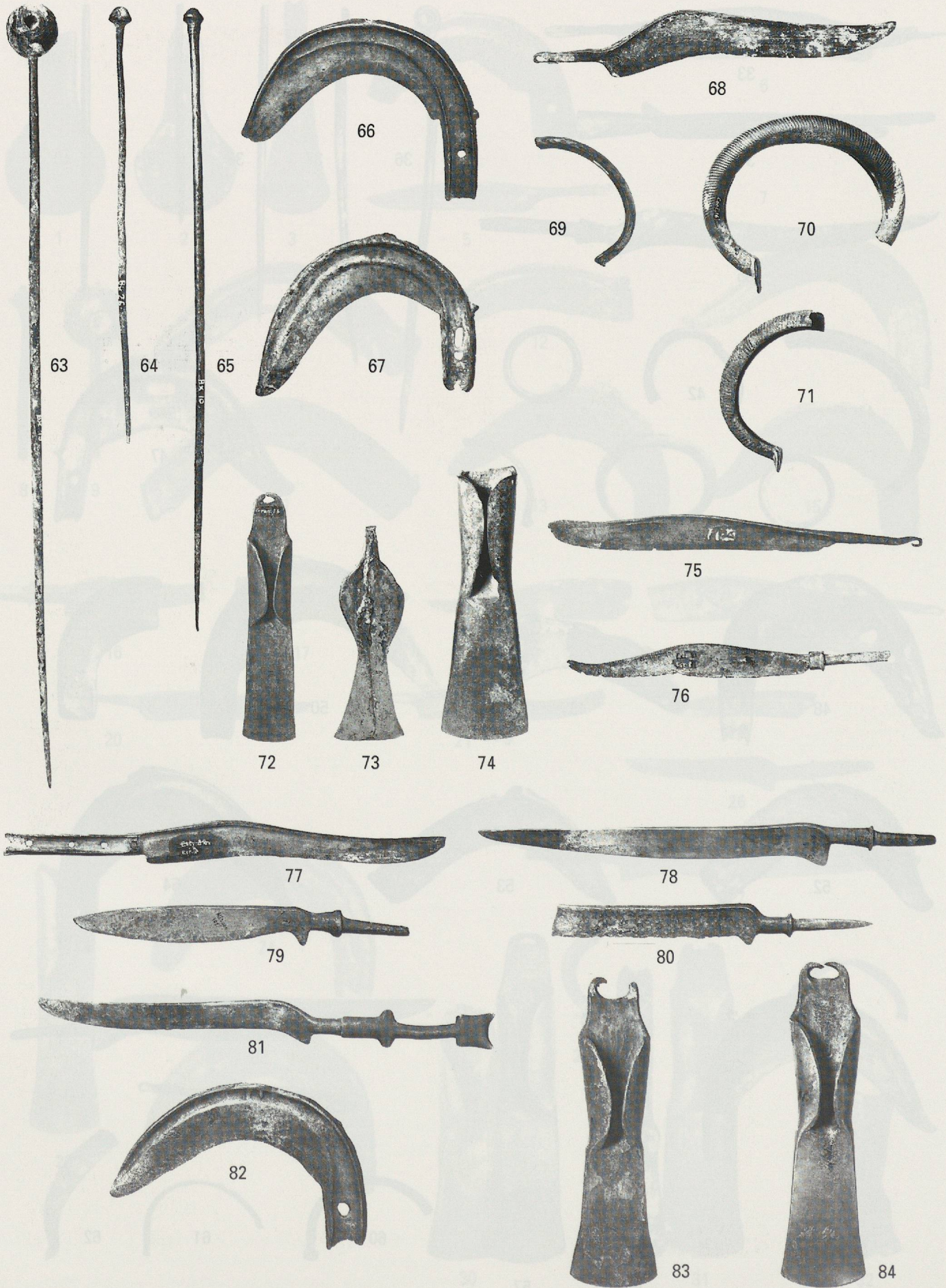


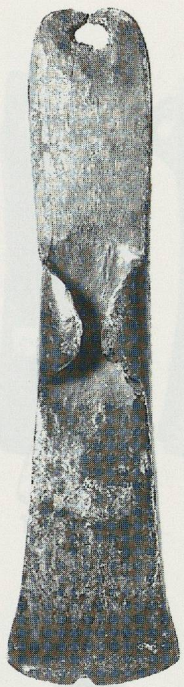
Prise de vue: Valentin Rychner
Tirage: Yves André

Les objets sont représentés à l'échelle 1:3, à l'exception des épingles et des objets 41-44, 487-492, 719-726, 739-741, 757, 843, 905-906, 922-924, qui sont à l'échelle 2:3.

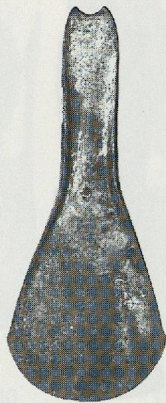




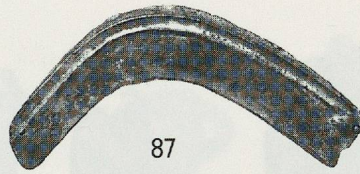




85



86



87



88



89



90



91



92



93



94



95



96



97



98



99



100



101



102



103



104



105



106



107



108



109



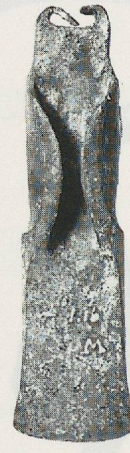
110



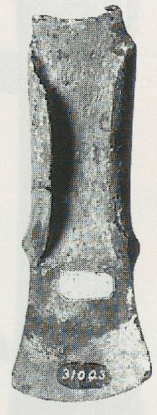
111



112



113



114



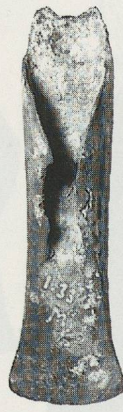
115



116



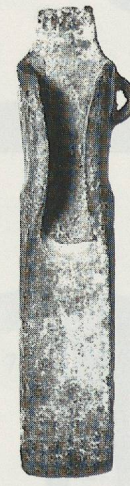
117



118



119



120



121



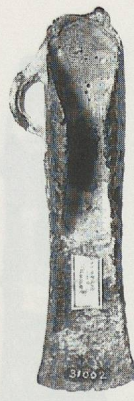
122



123



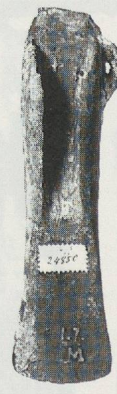
124



125



126



127



128



129

130

131

132

133

134

135

136



137

138

139

140

141

142

143

144



145

146

147

148

149

150

151

152



153

154

155

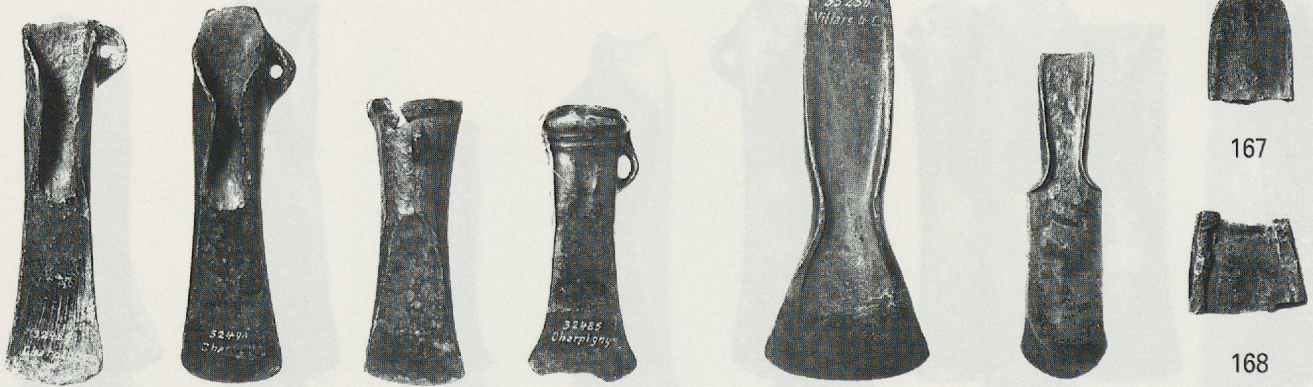
156

157

158

159

160



161

162

163

164

165

166

167

168

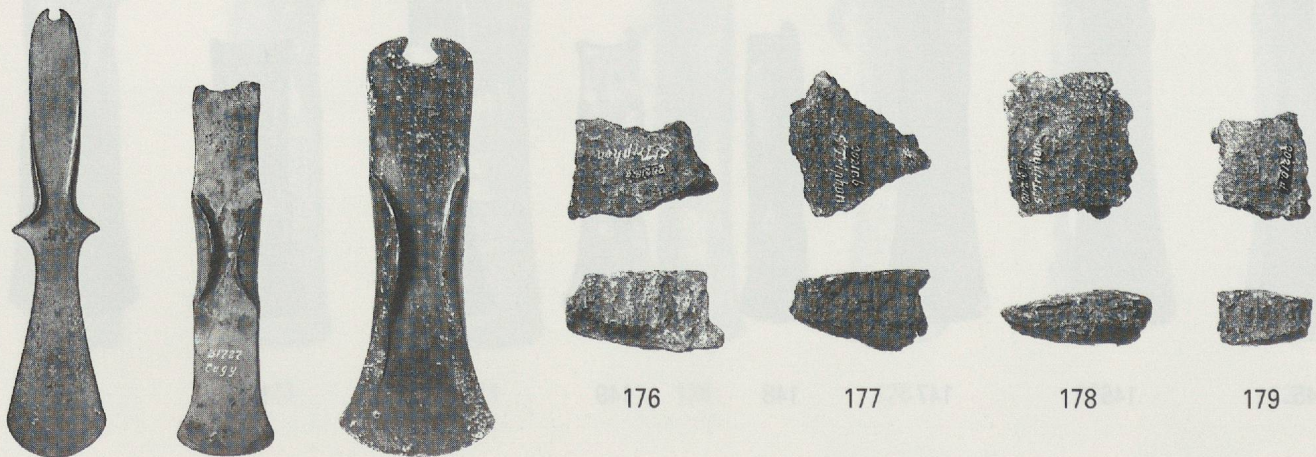


169

170

171

172



173

174

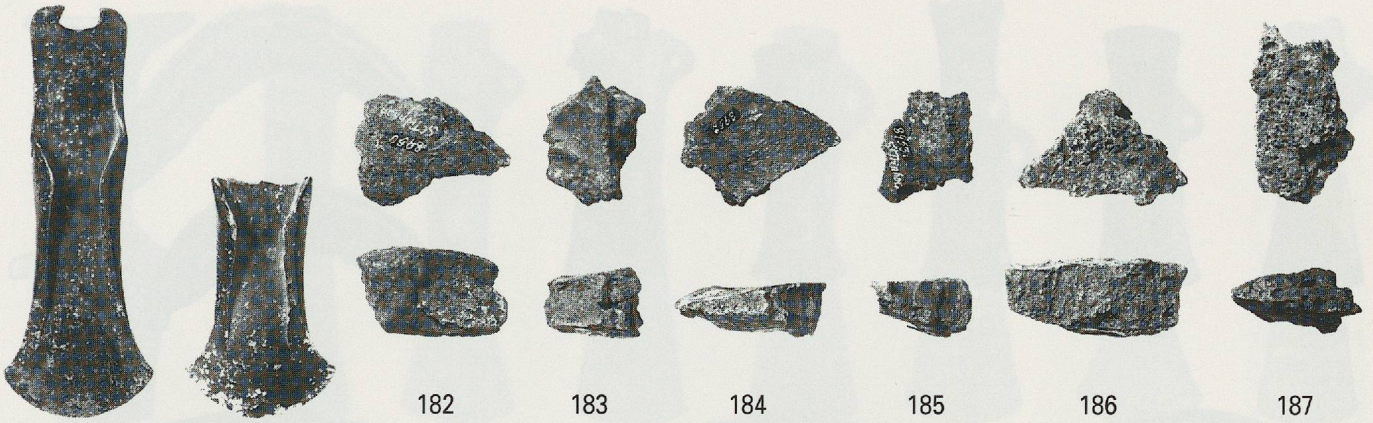
175

176

177

178

179



180

181

182

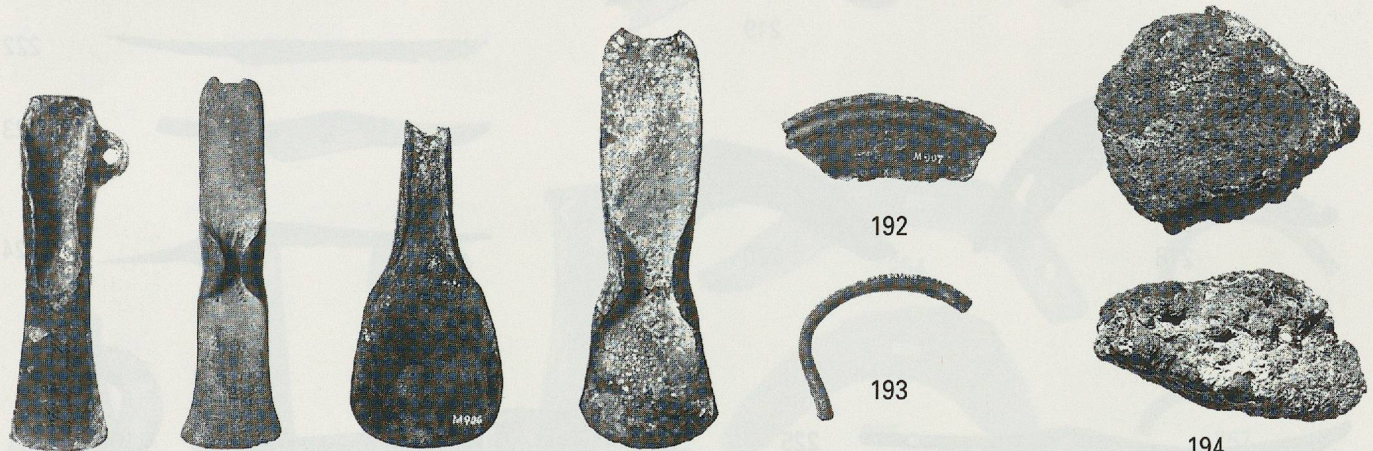
183

184

185

186

187



188

189

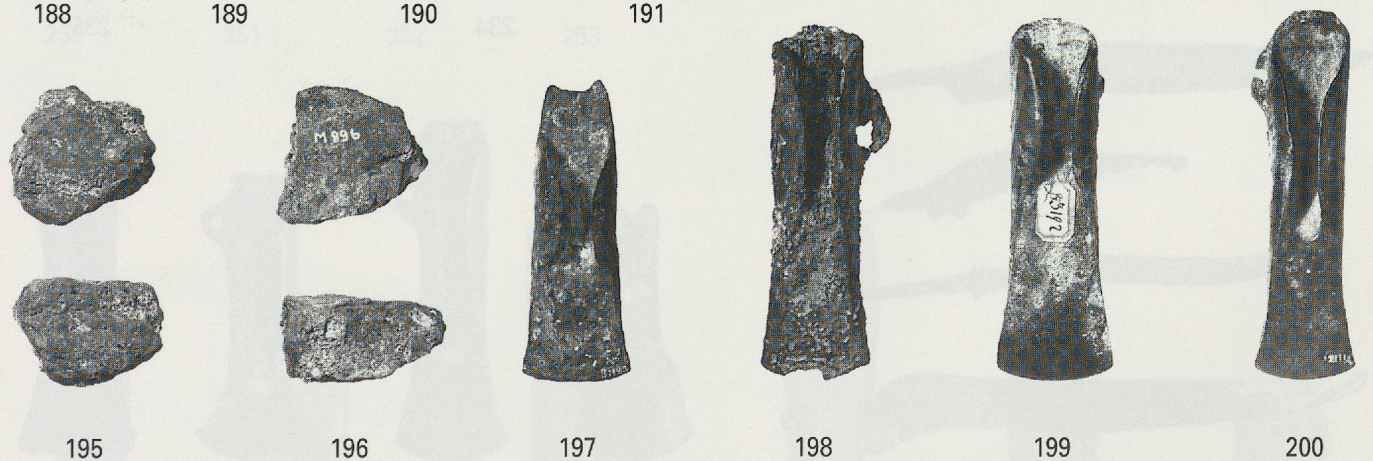
190

191

192

193

194



195

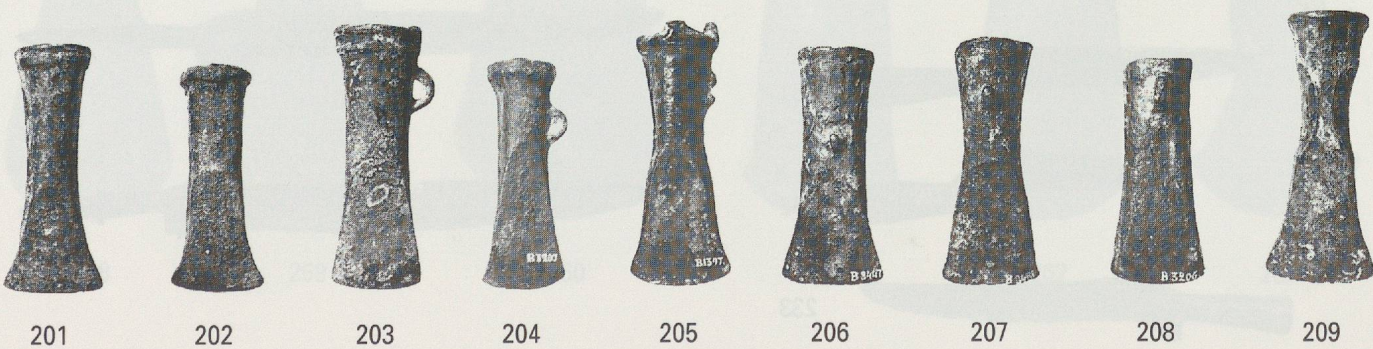
196

197

198

199

200



201

202

203

204

205

206

207

208

209





242



243



244



245



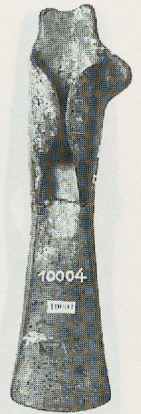
246



247



248



249



250



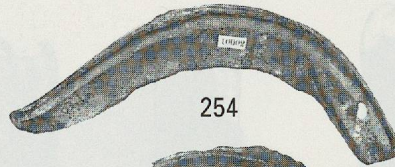
251



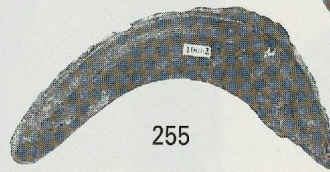
252



253



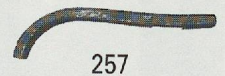
254



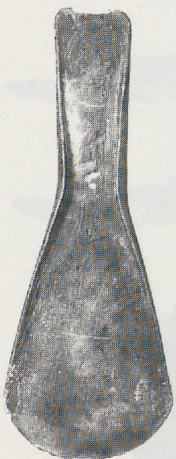
255



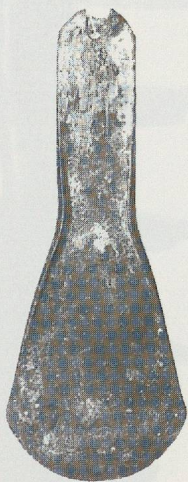
256



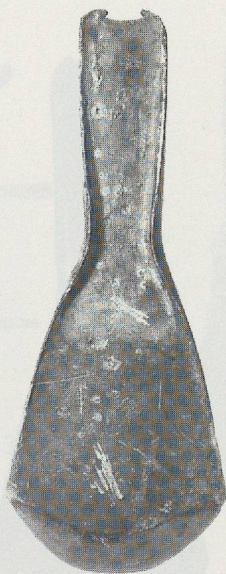
257



258



259



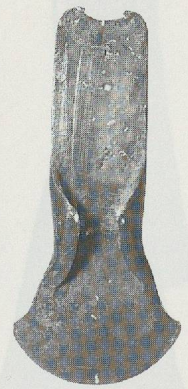
260



261



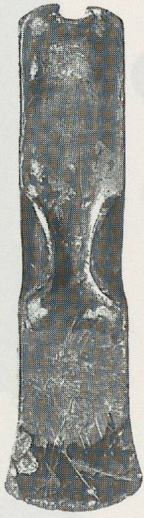
262



263



264



265



266



267



268



269



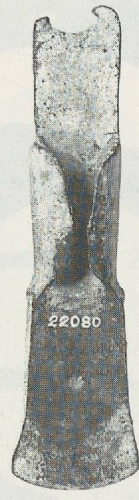
270



271

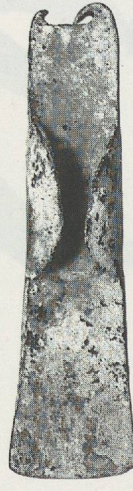


272



22080

273



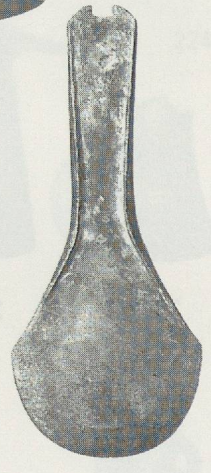
274



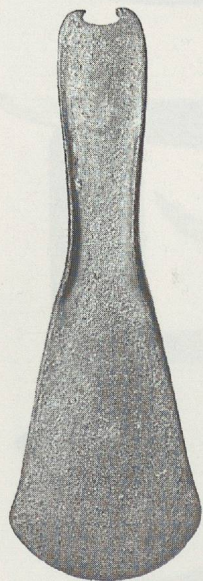
275



276



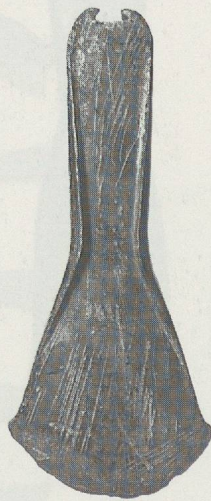
277



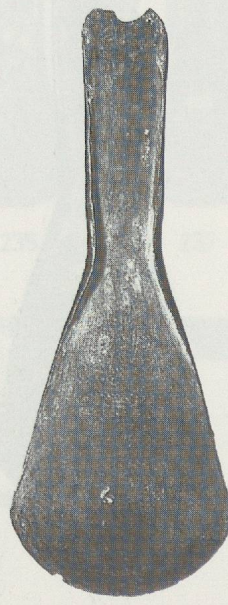
278



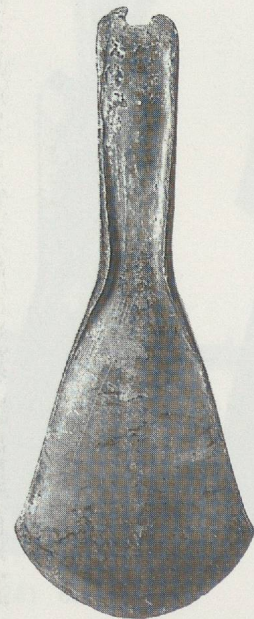
279



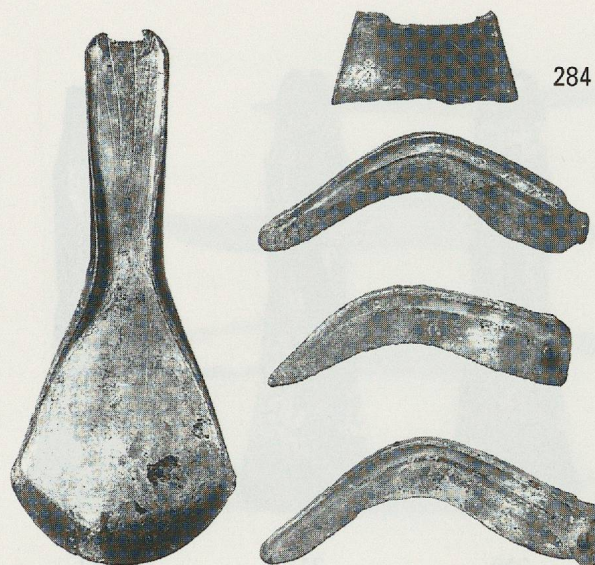
280



281

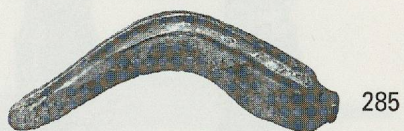


282

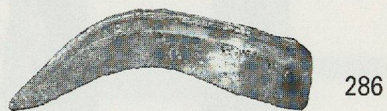


283

284



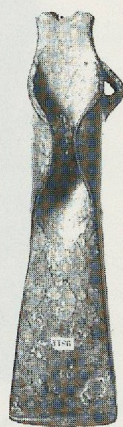
285



286



287



288



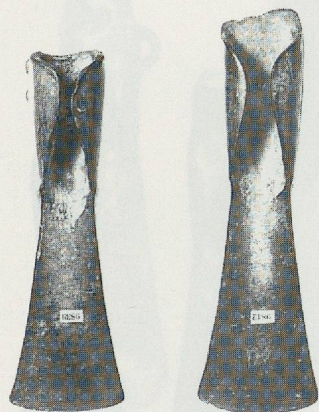
289



290



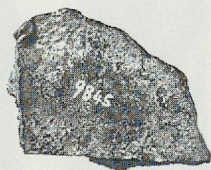
291



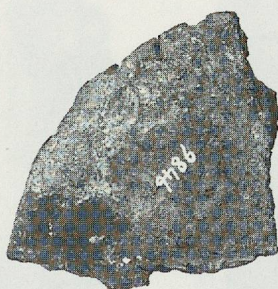
292



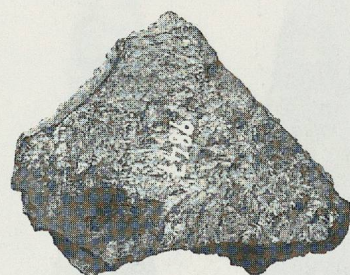
293



294



295



296



297



298



299



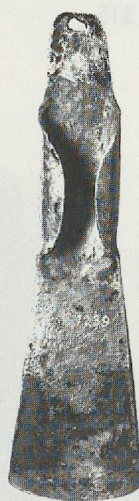
300



301



302



303



304



305



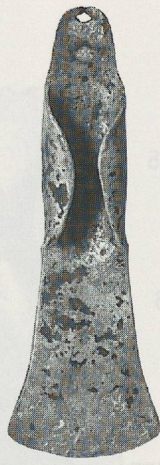
306



307



308



309



310



311



312



313



314



315



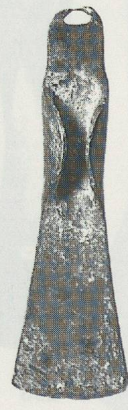
316



317



318



319



320



321



322



323



324



325



326



327



328



329



333



330



334



331



335



332



336



337



338



339



340



341



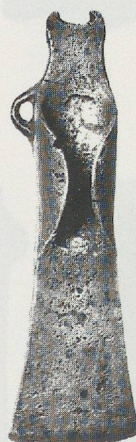
342



343



344



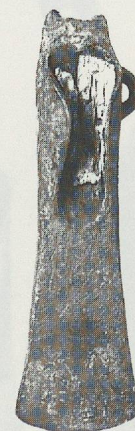
345



346



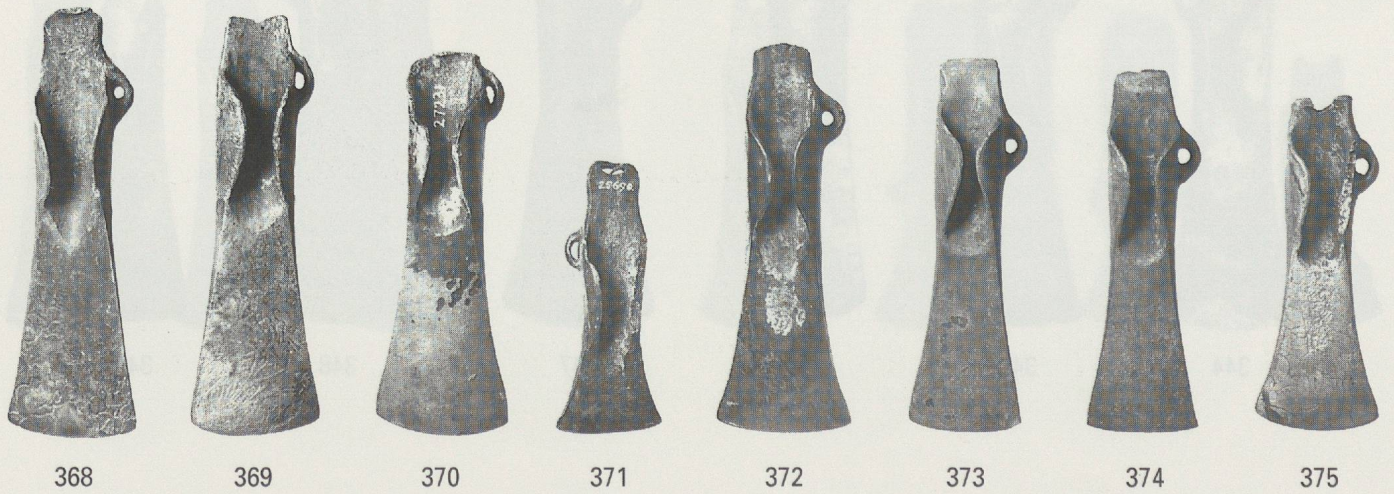
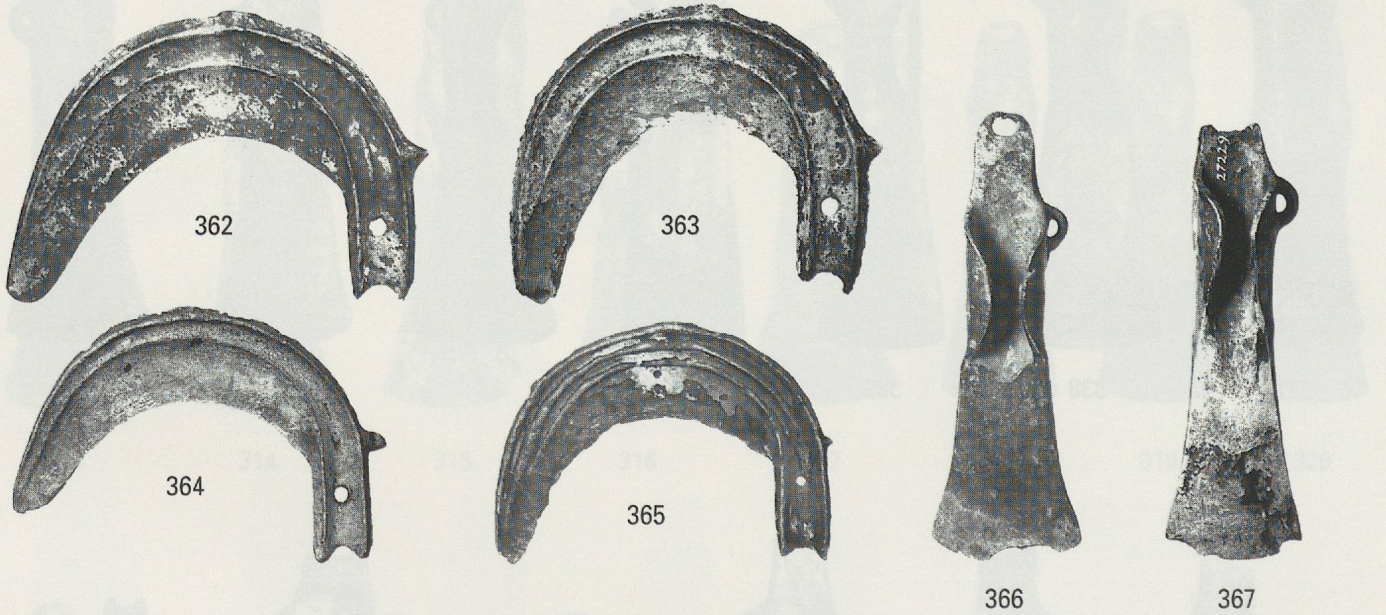
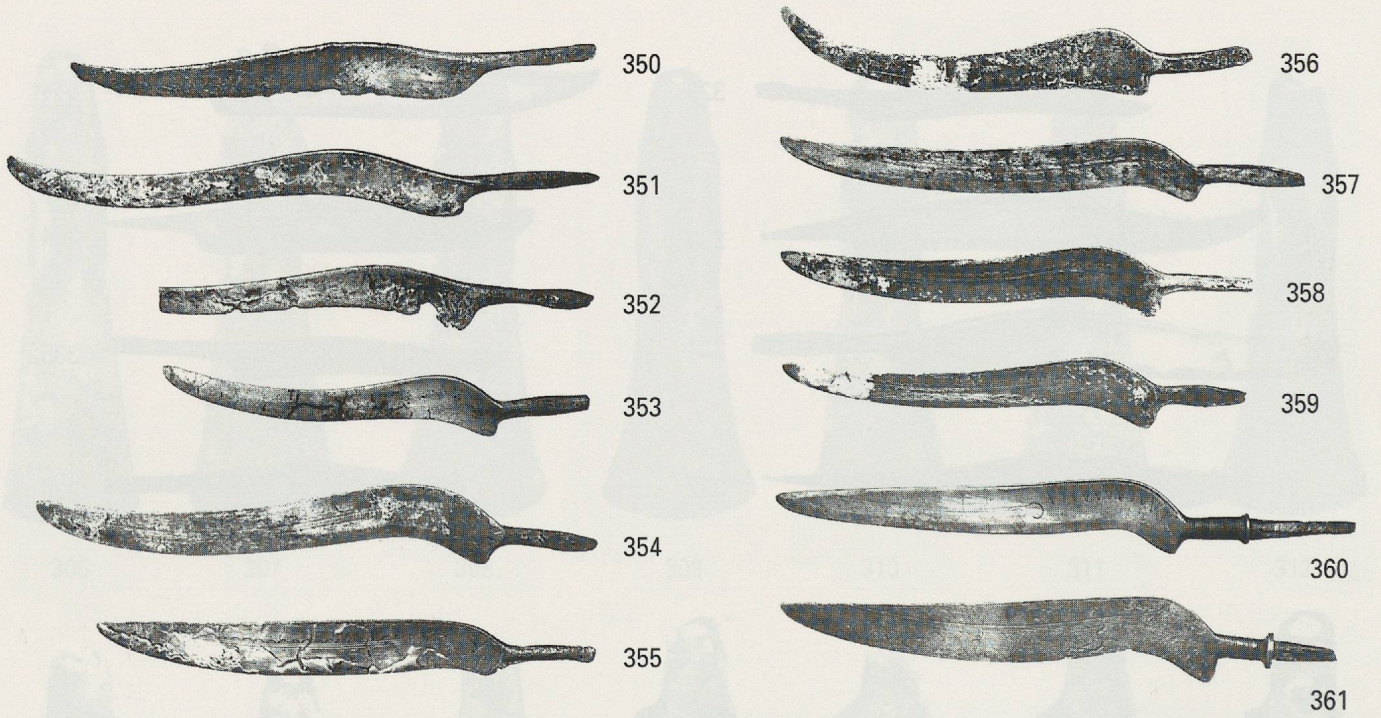
347

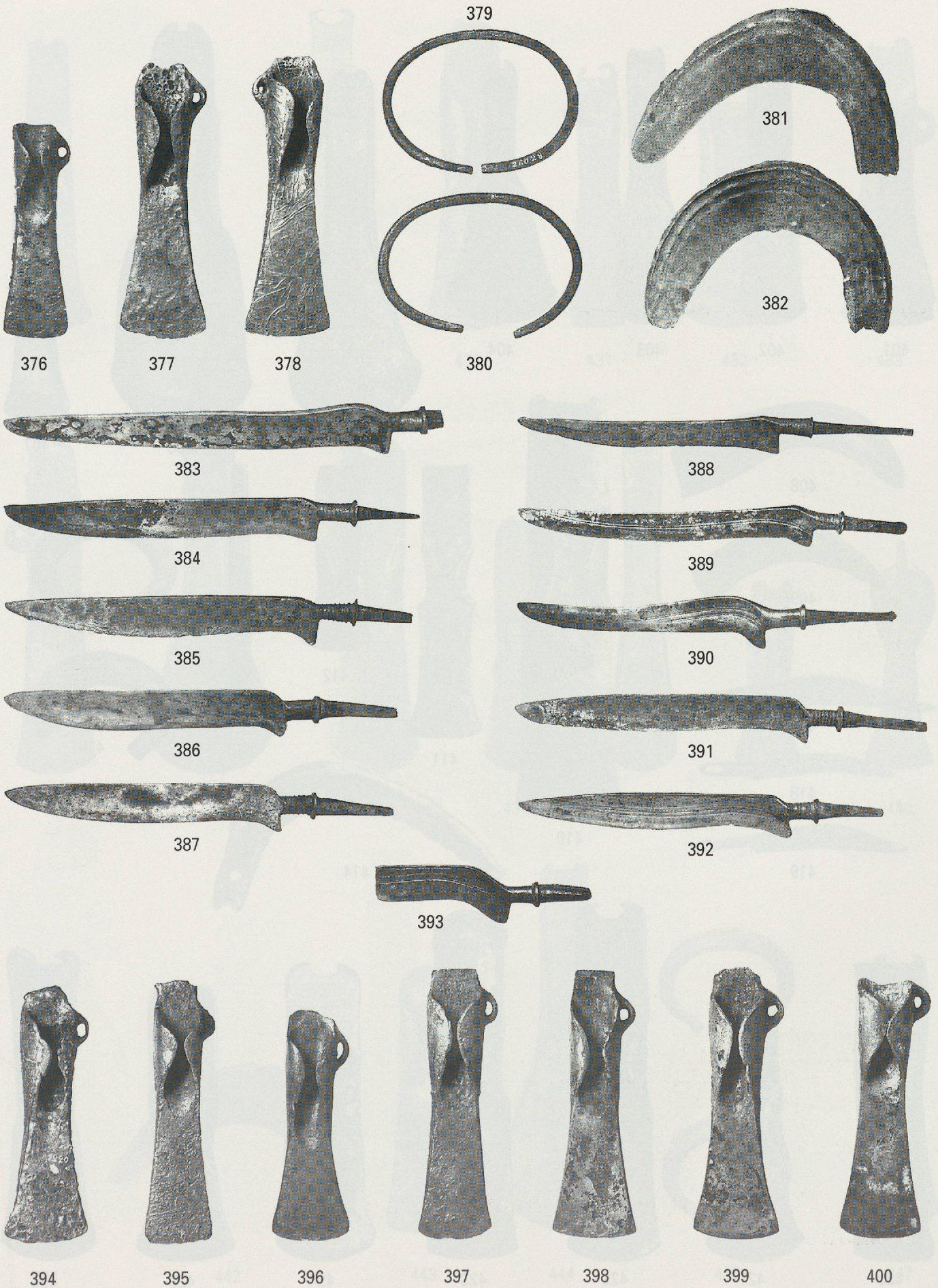


348

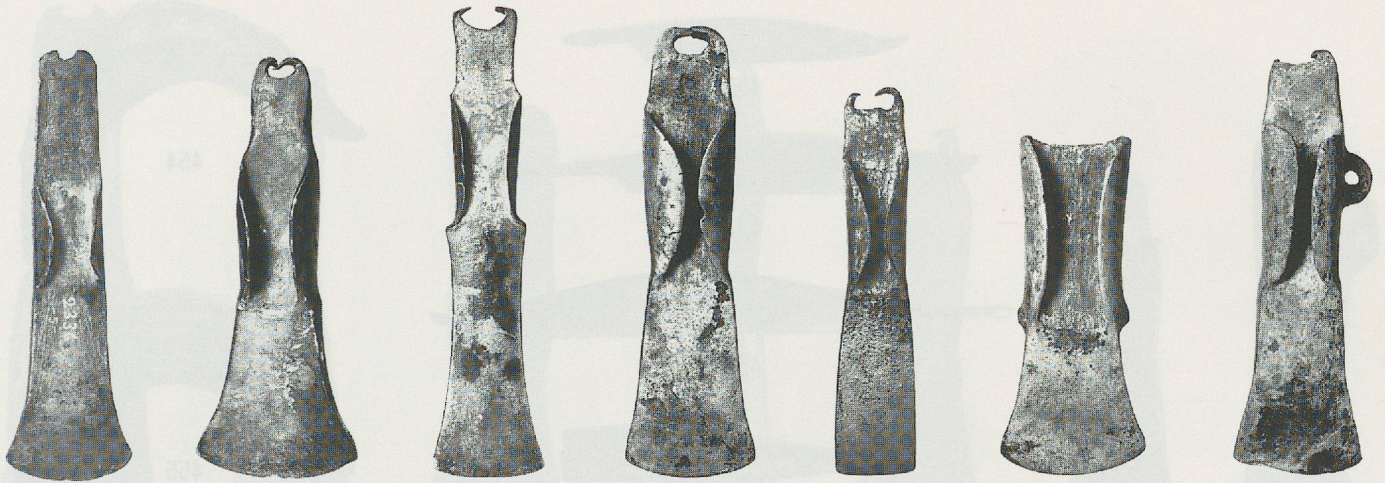


349









427

428

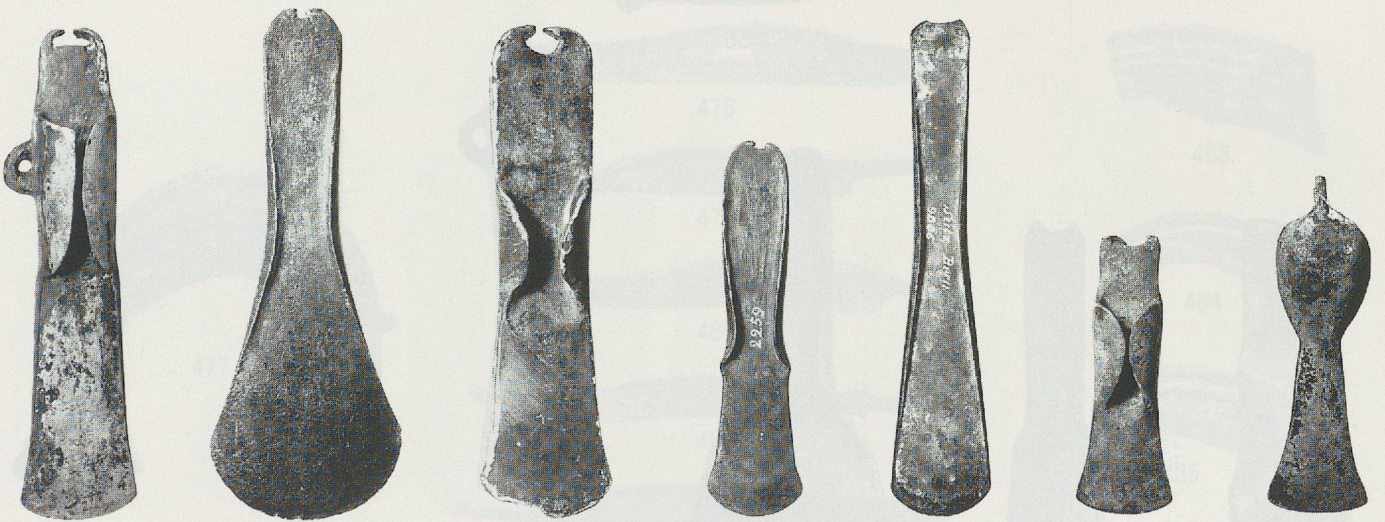
429

430

431

432

433



434

435

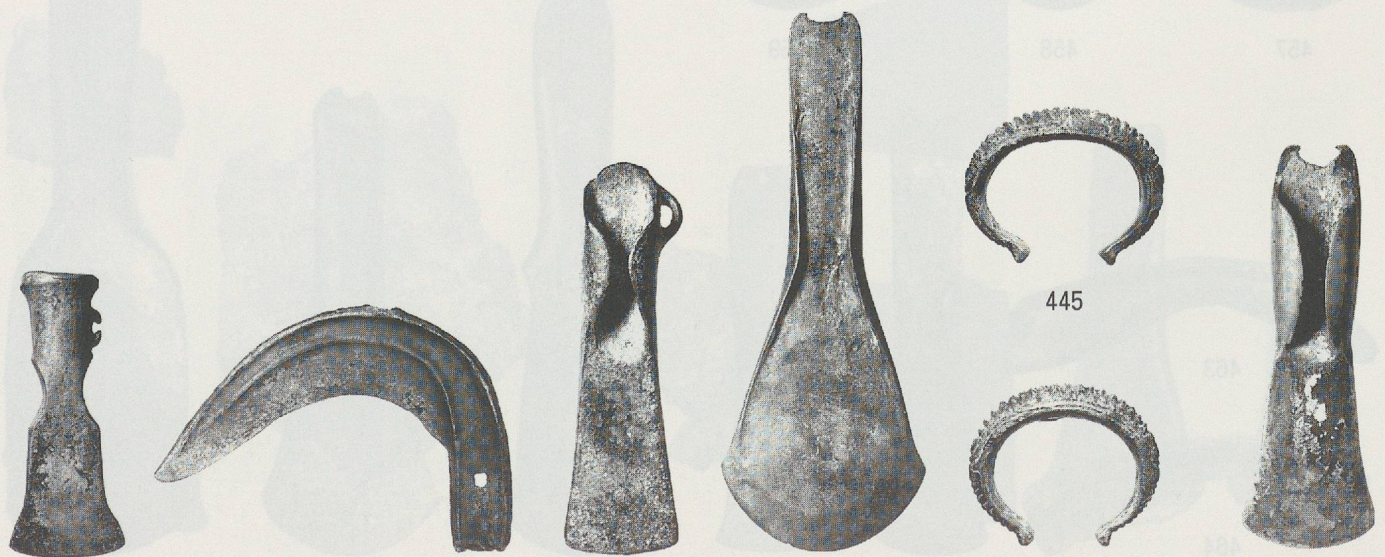
436

437

438

439

440



441

442

443

444

445

446

447





470



471



472



473



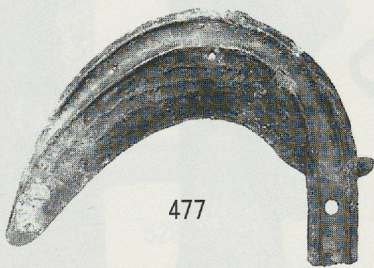
474



475



476



477



478



479



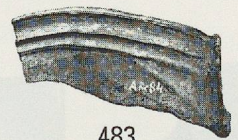
480



481



482



483



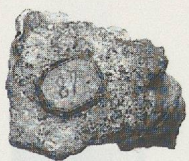
484



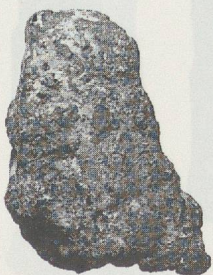
485



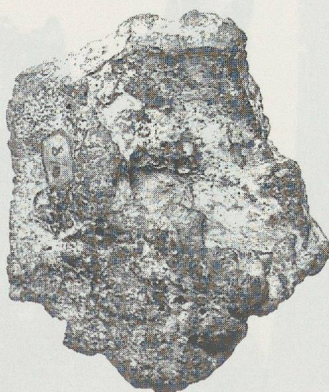
486



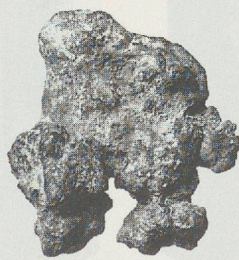
487



488



489



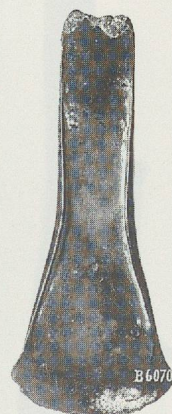
490



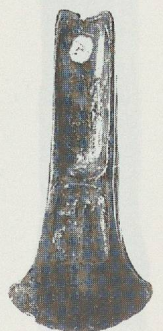
491



492



493



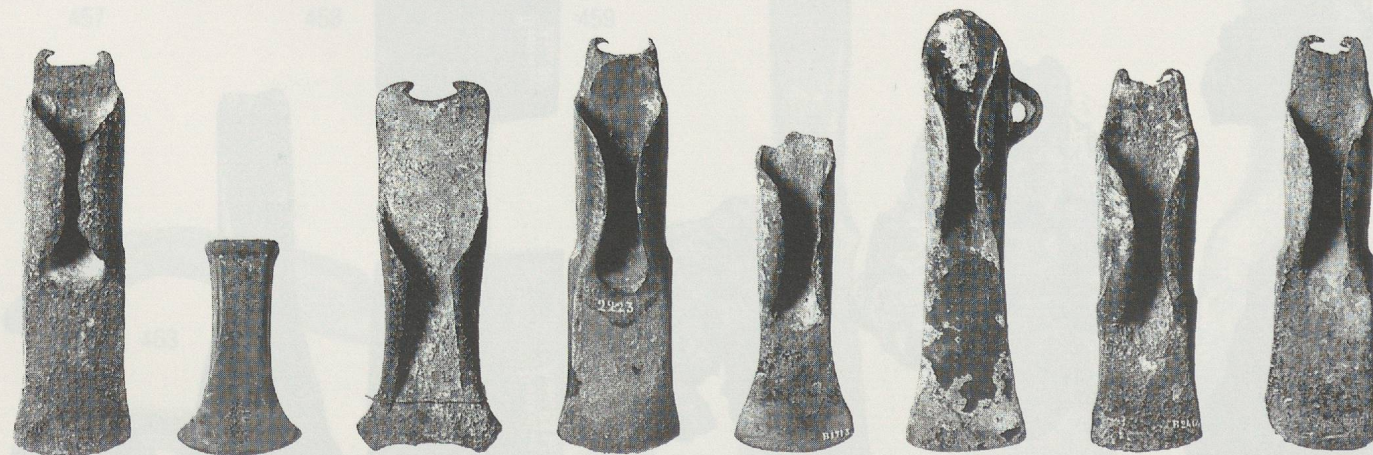
494



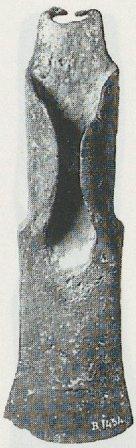
495 496 497 498 499 500 501 502



503 504 505 506 507 508 509 510



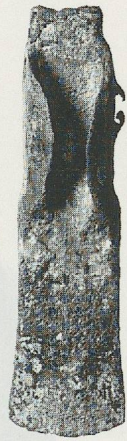
511 512 513 514 515 516 517 518



519



520



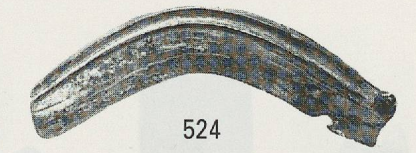
521



522



523



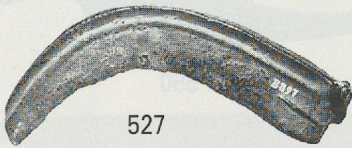
524



525



526



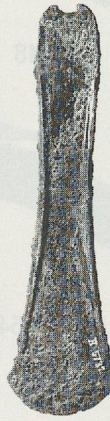
527



528



529



530



531



532



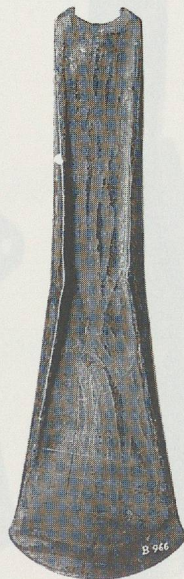
533



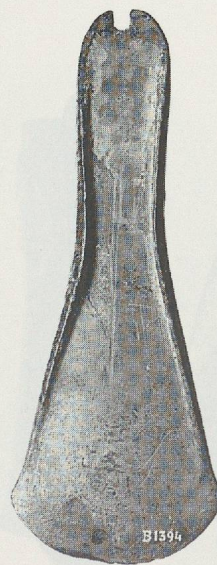
534



535



536



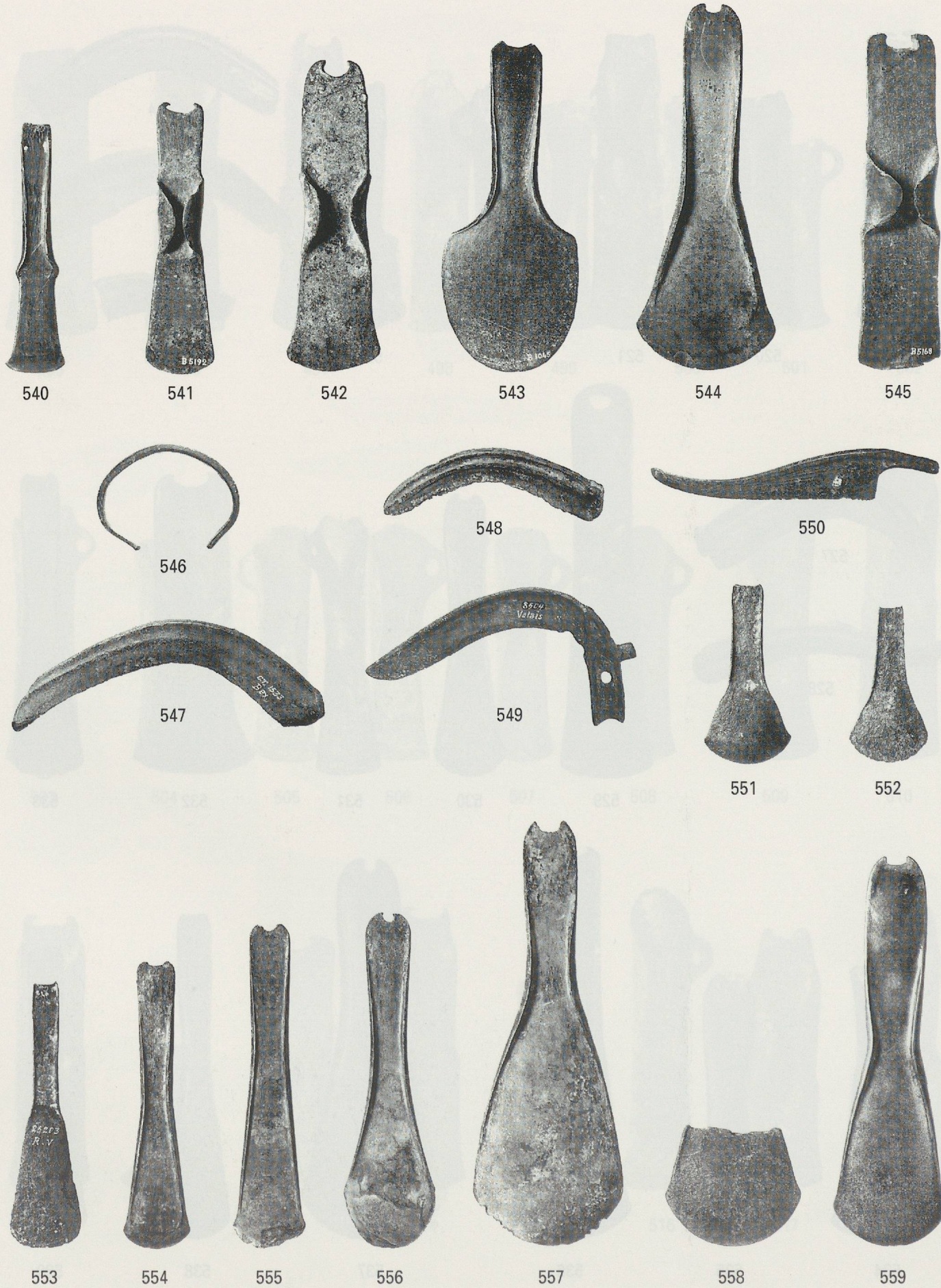
537



538



539





560



561



562



563



564



565



566



567



568



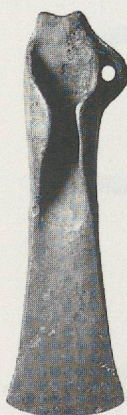
569



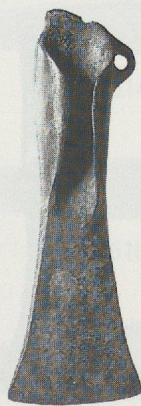
570



571



572



573



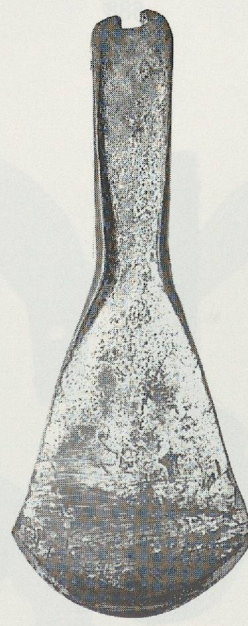
574



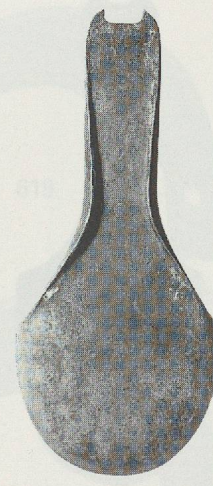
575



576



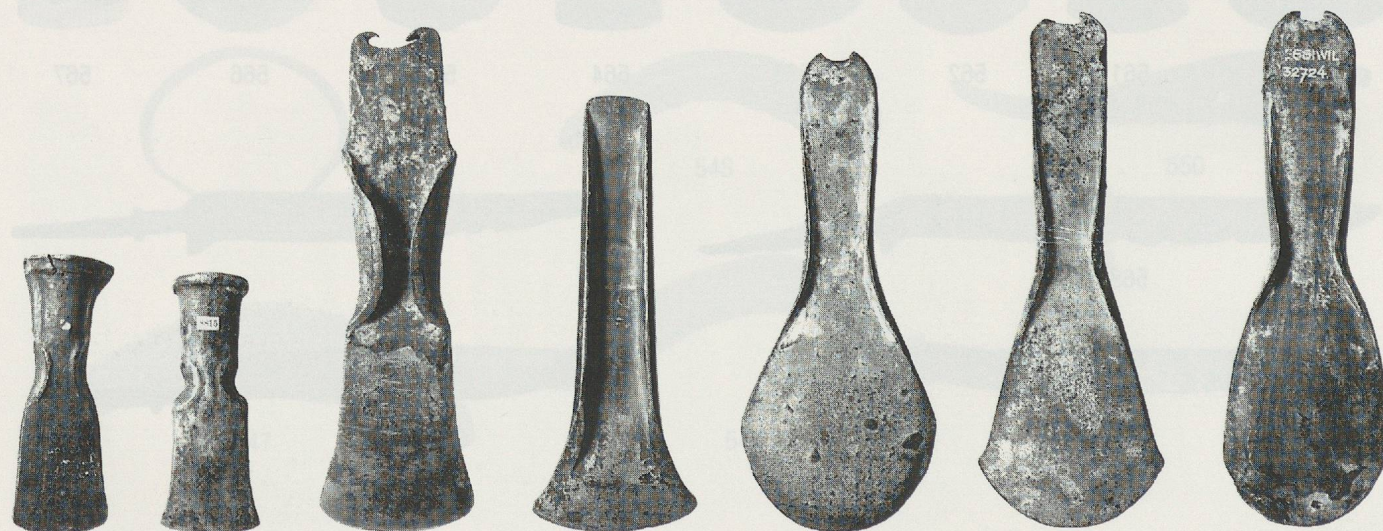
577



578



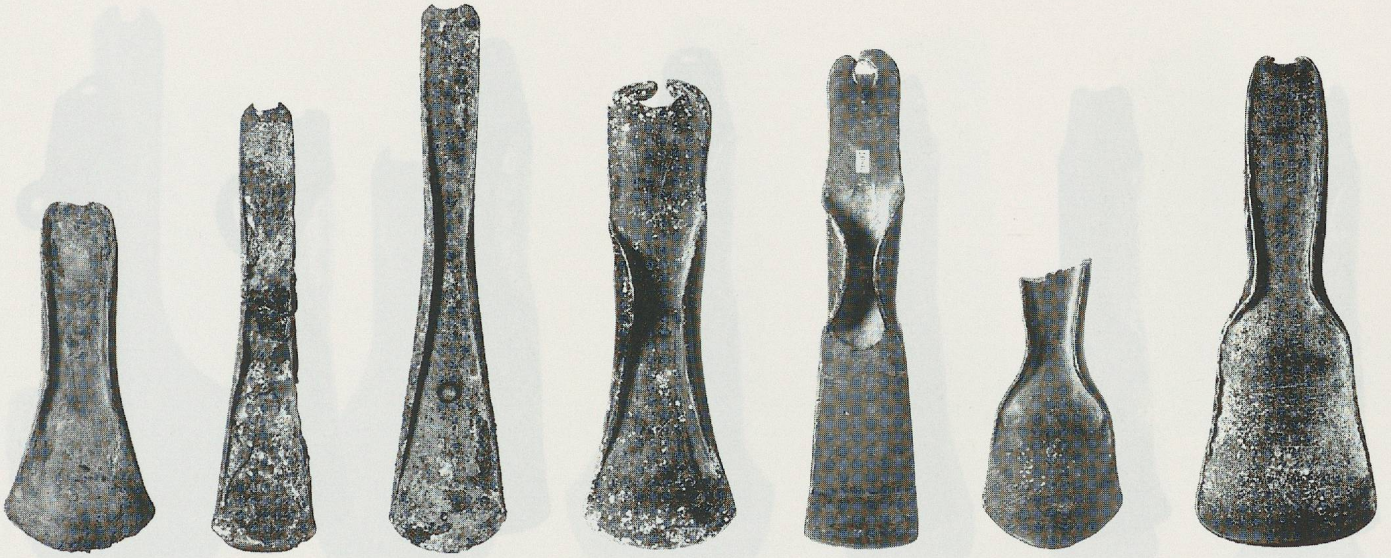
579 580 581 582 583 584 585



586 587 588 589 590 591 592



593 594 595 596 597 598 599



600

601

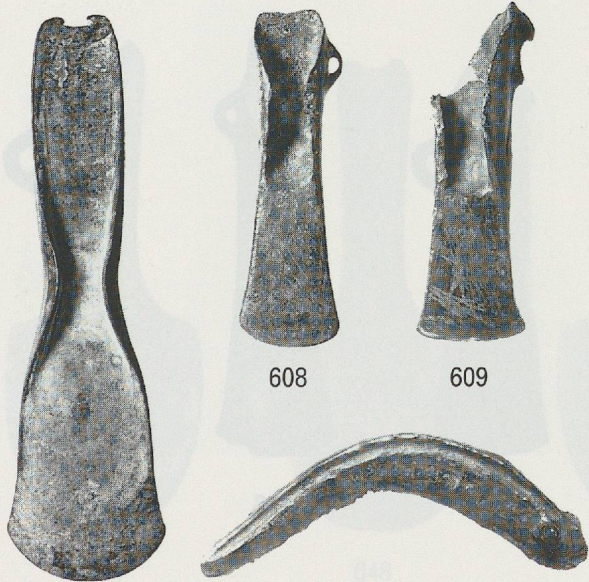
602

603

604

605

606



607

608

609

610



611



612



613



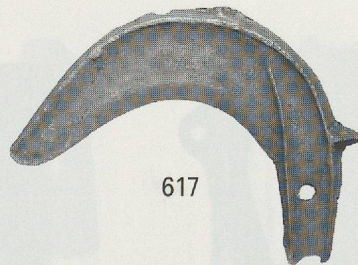
614



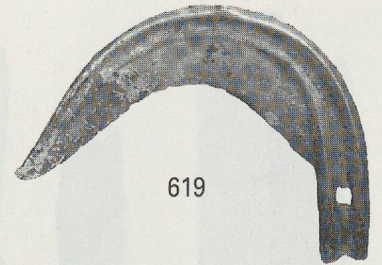
615



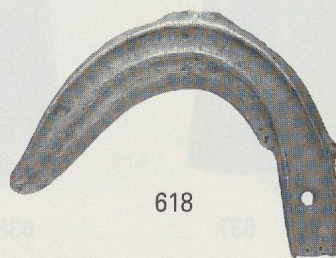
616



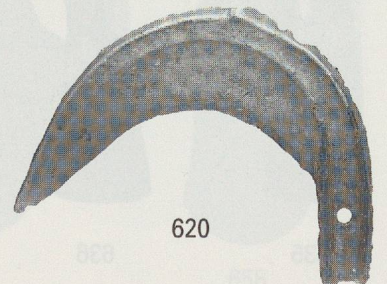
617



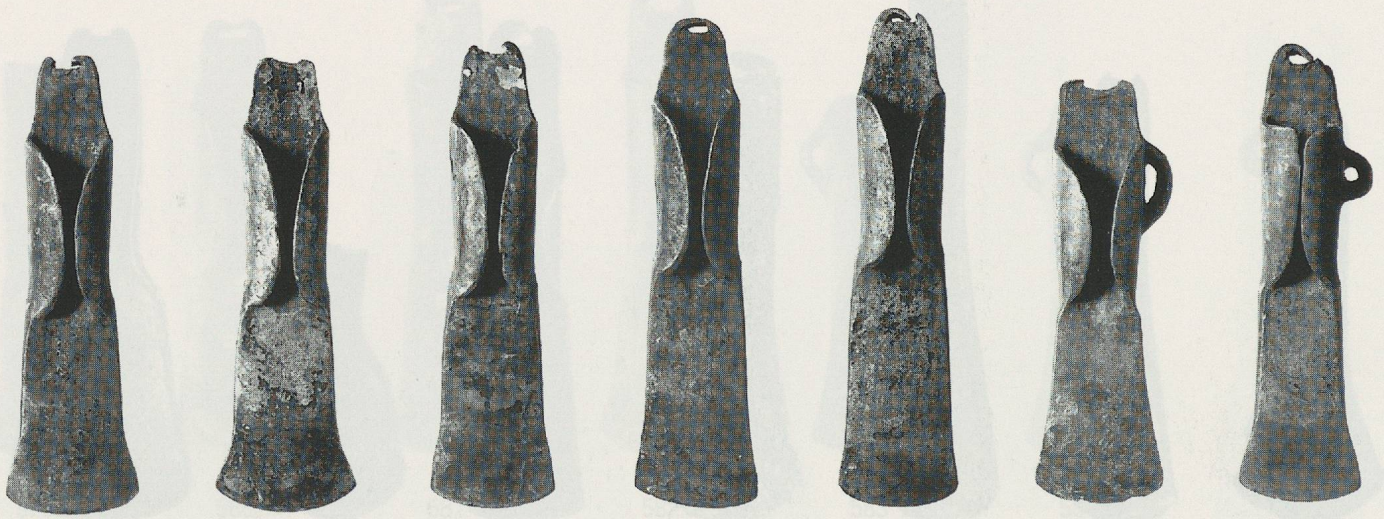
619



618



620



621

622

623

624

625

626

627



628

629

630

631

632

633

634



635

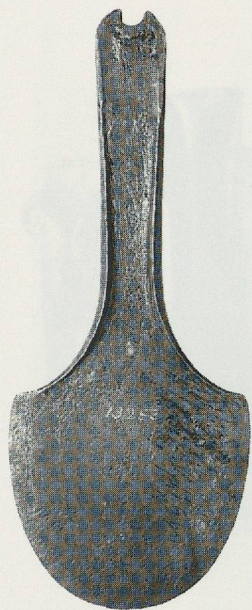
636

637

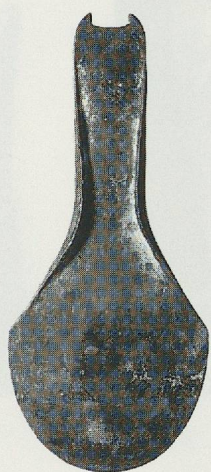
638

639

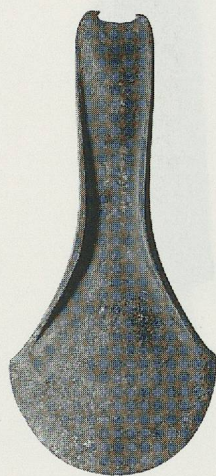
640



641



642



643



644



645



646



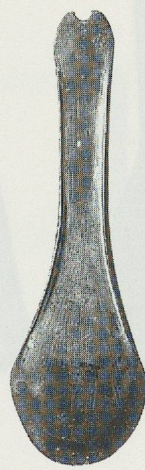
647



648



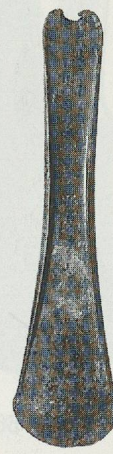
649



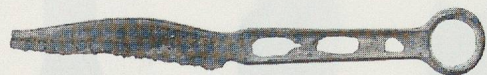
650



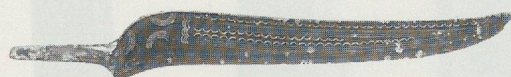
655



656



651



652



653



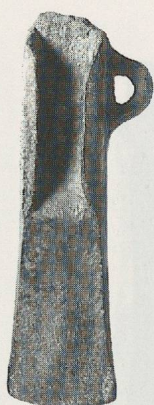
654



657



658



659



660



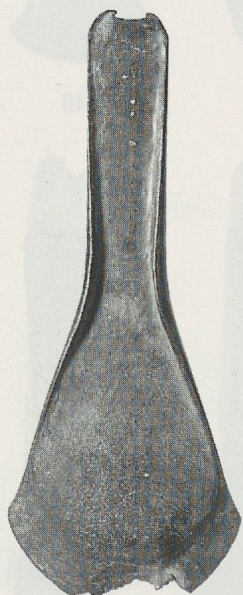
661



662



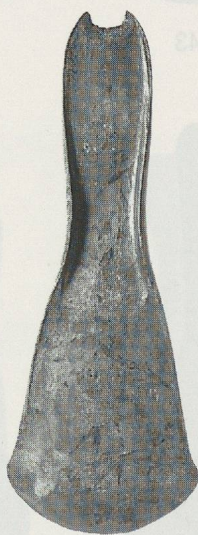
663



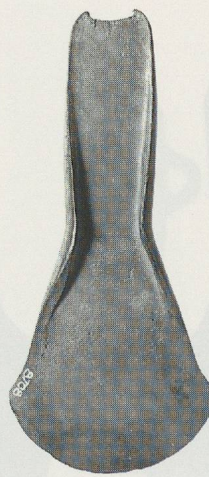
664



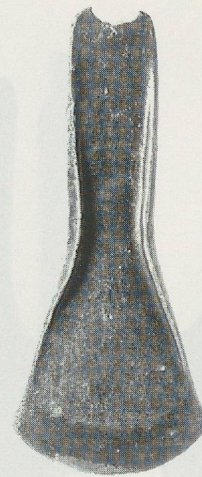
665



666



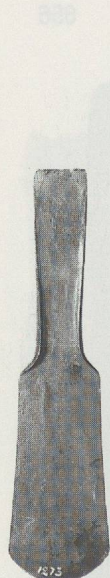
667



668



669



670



671



672



673



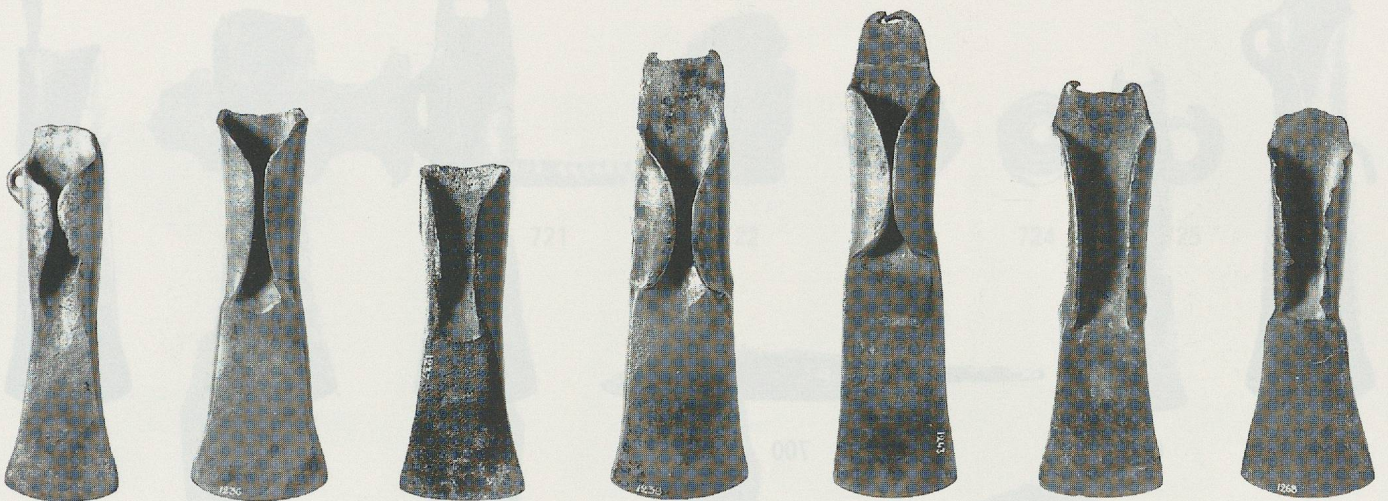
674



675



676



677

678

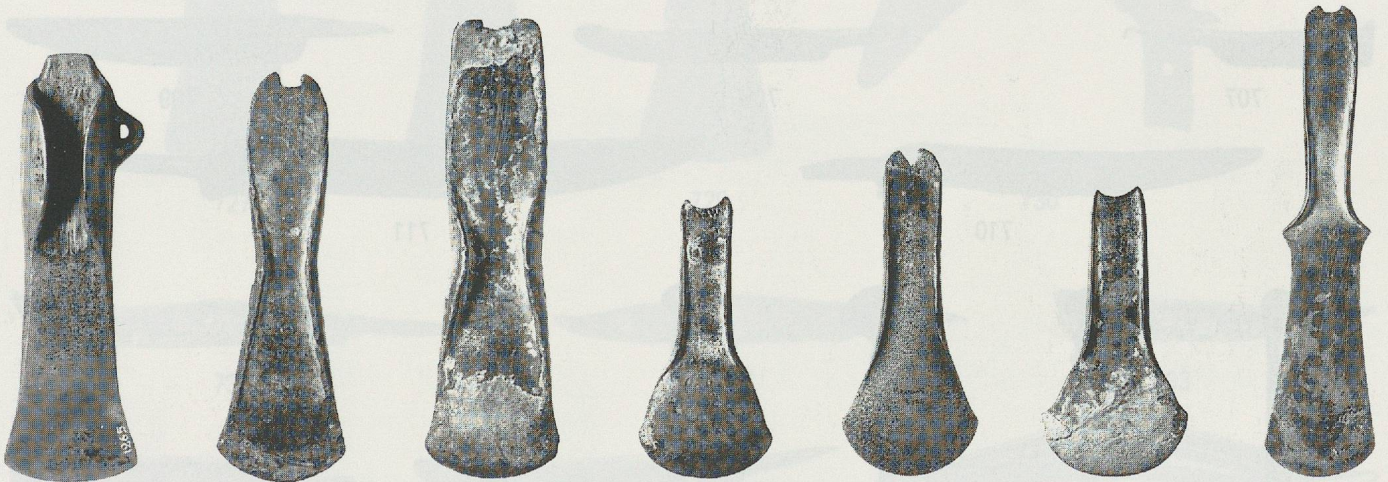
679

680

681

682

683



684

685

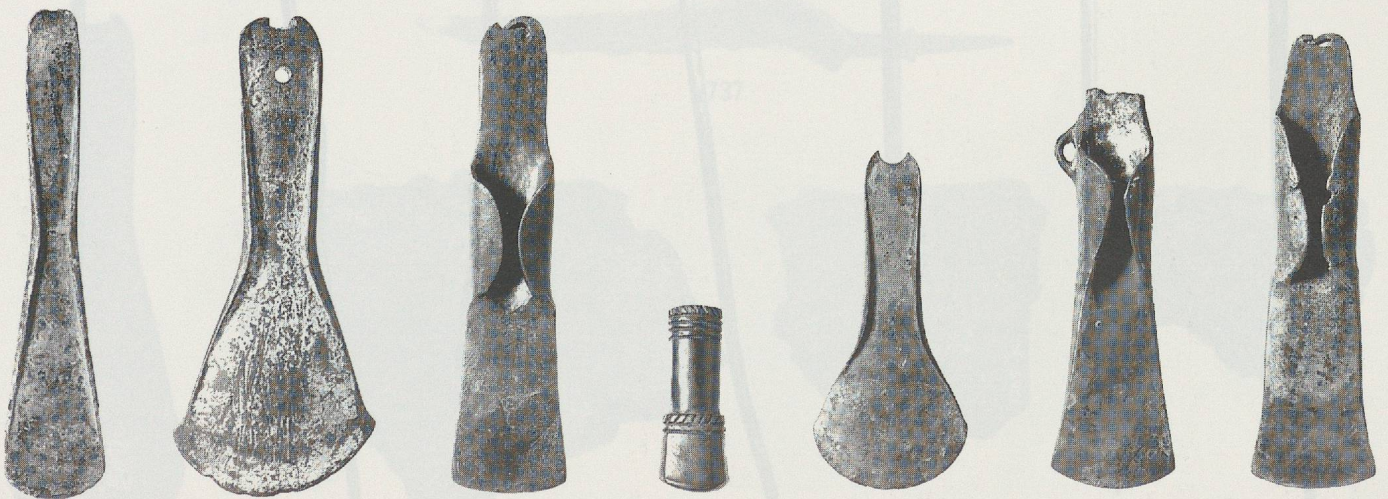
686

687

688

689

690



691

692

693

694

695

696

697



698



699



700



701



702



703



704



705



706



707



708



709



710



711



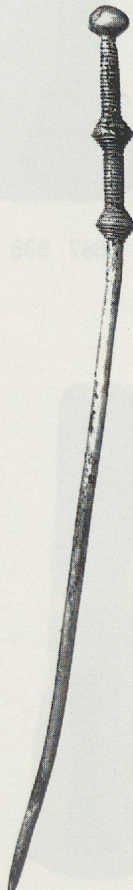
712



713



714



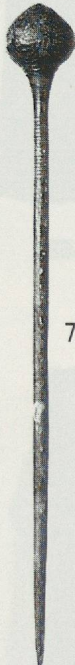
715



716



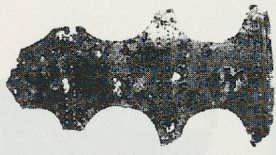
717



718



719



720



721



722



723



724



725



726



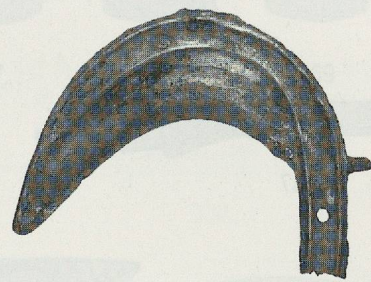
727



728



729



730



731



732



733



734



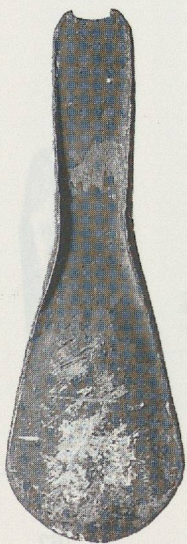
735



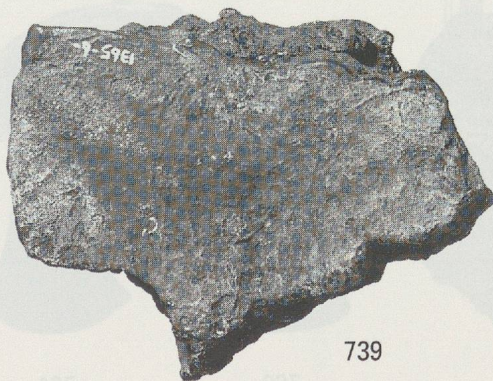
736



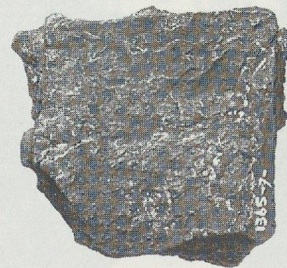
737



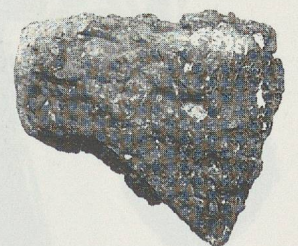
738



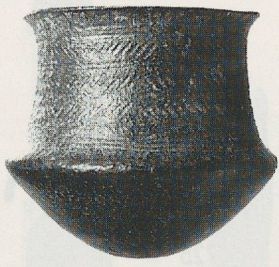
739



740



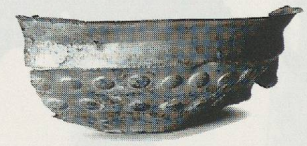
741



742



743



744



745



746



747



748



750



749



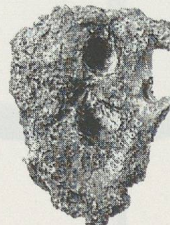
751



752



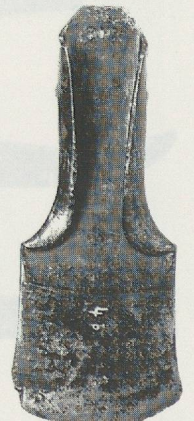
753



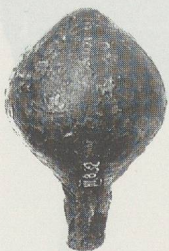
754



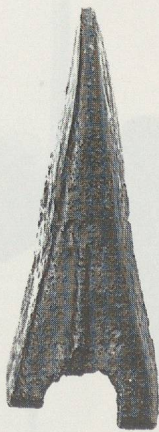
755



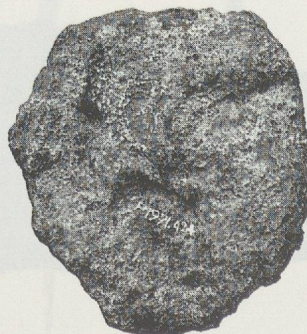
756



757



758



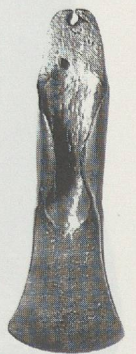
759



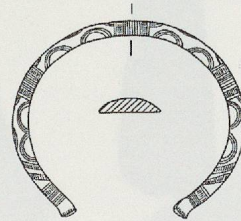
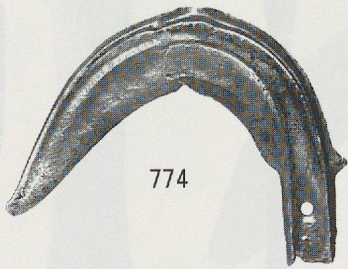
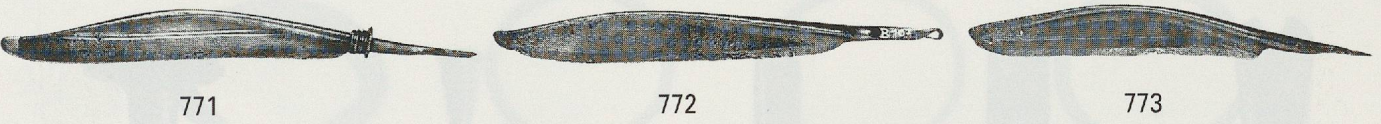
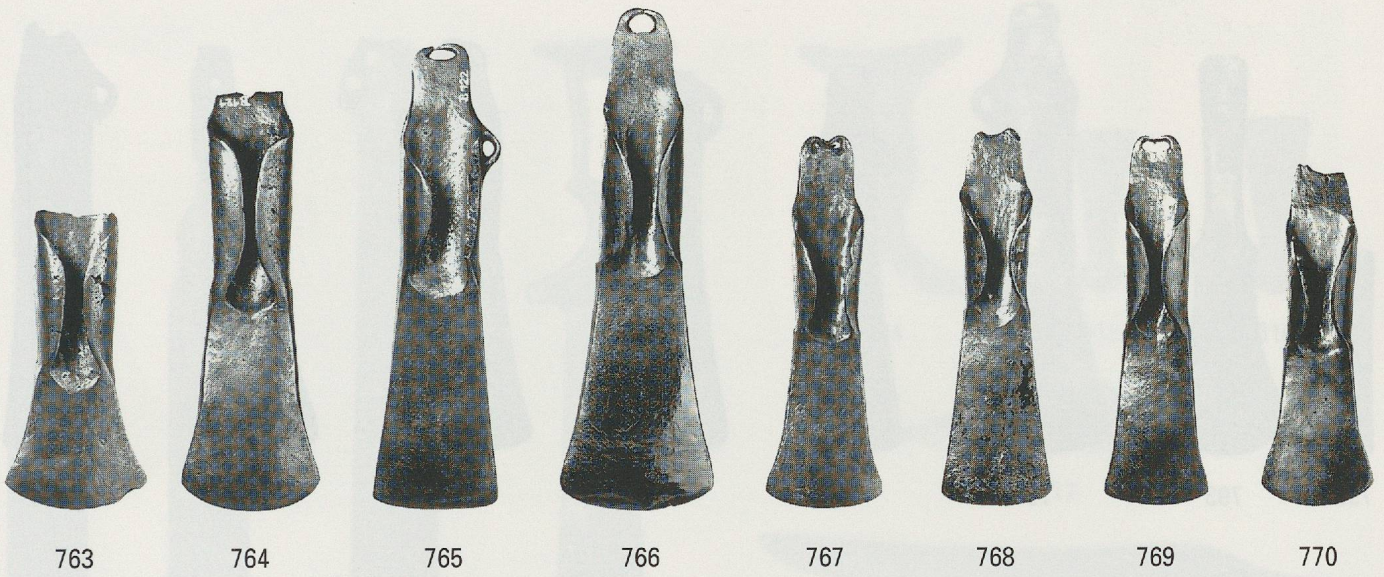
760



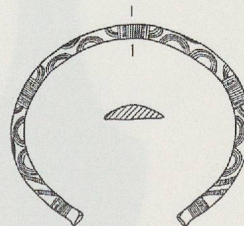
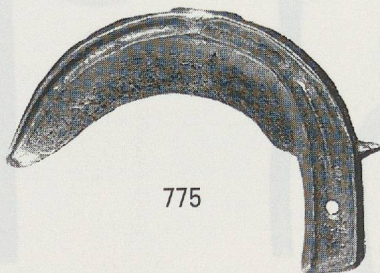
761



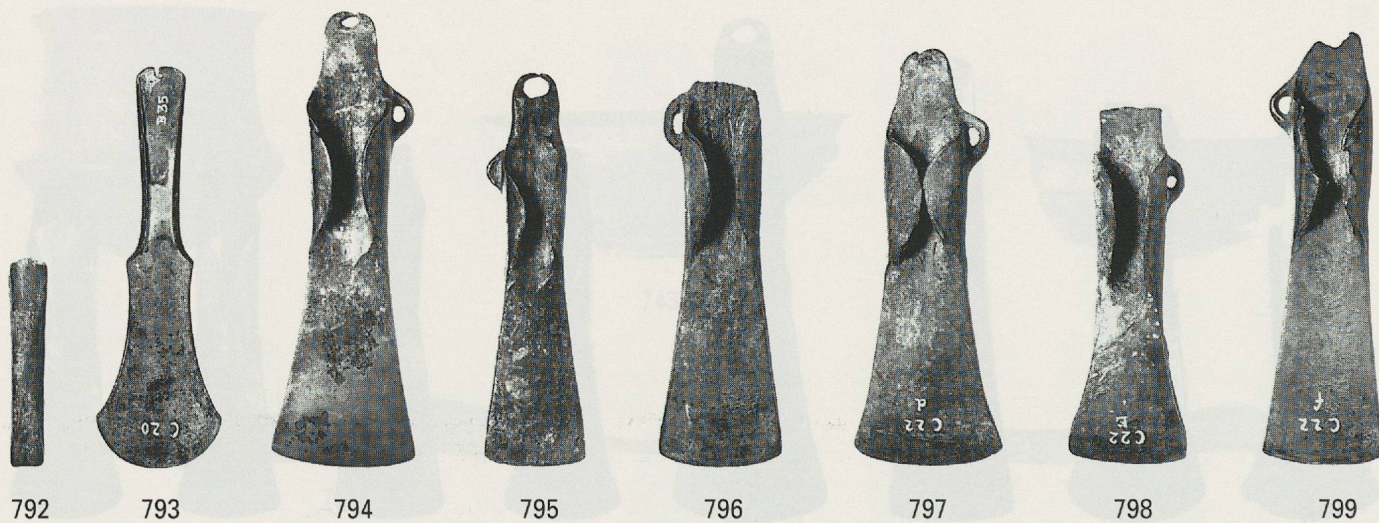
762



776-777, 780-781, 783, 786-790



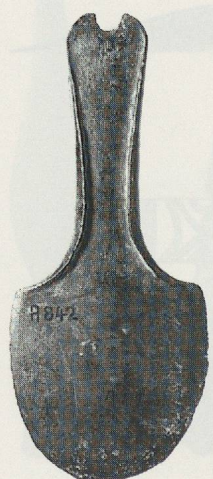
778-779, 782, 784-785, 791



800



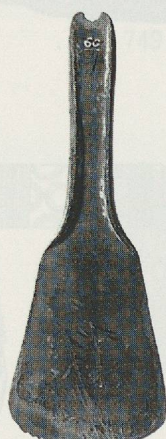
801



802



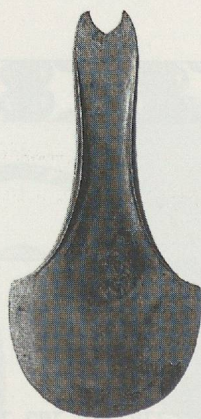
803



804



805



806



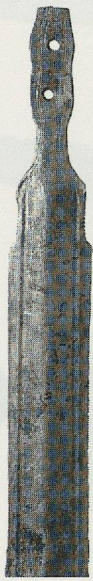
807



808



810



811



812



813



814



815



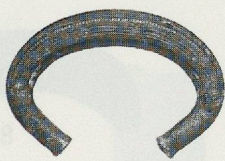
816



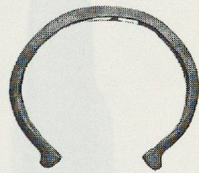
817



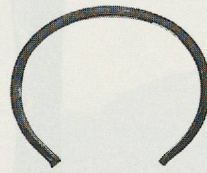
818



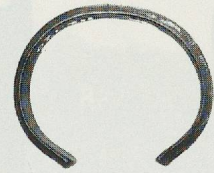
819



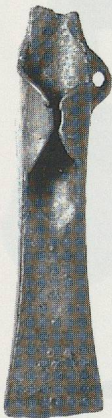
820



821



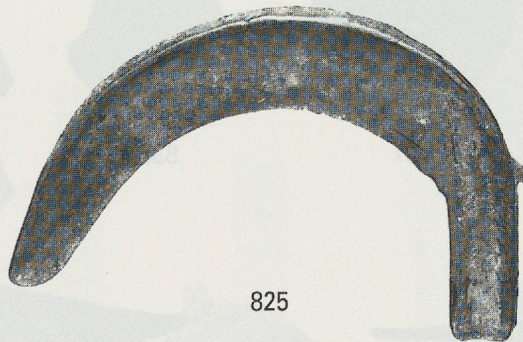
822



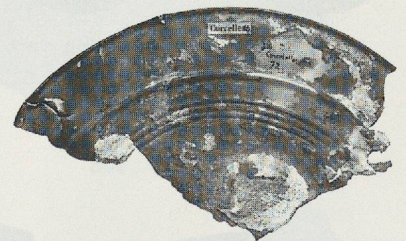
823



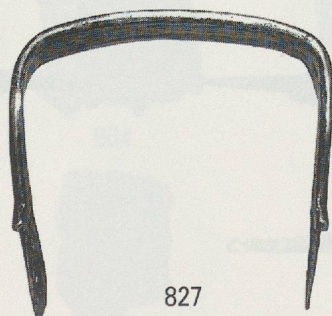
824



825



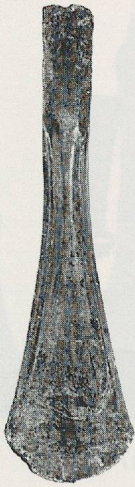
826



827



828



829



830



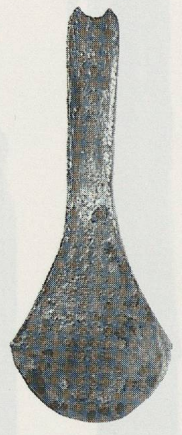
831



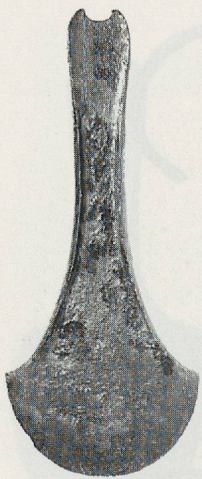
832



833



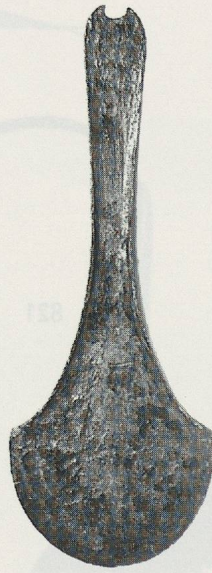
834



835



836



837



838



839



840



841



842



843



844



845



848



846



849



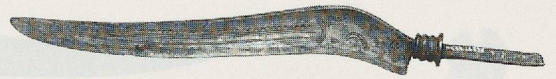
847



850



851



852



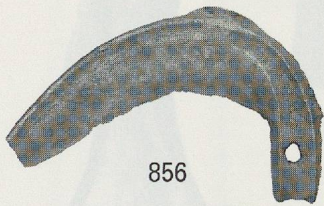
853



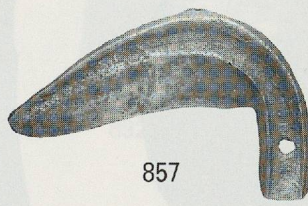
854



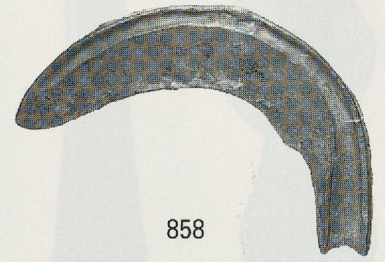
855



856



857



858



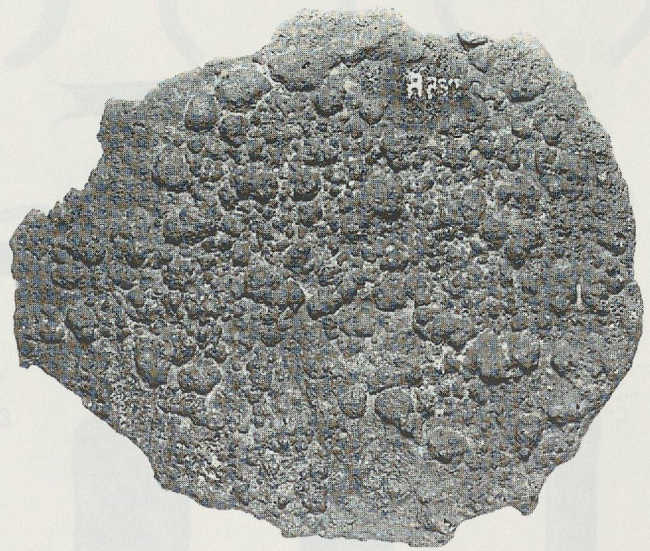
859



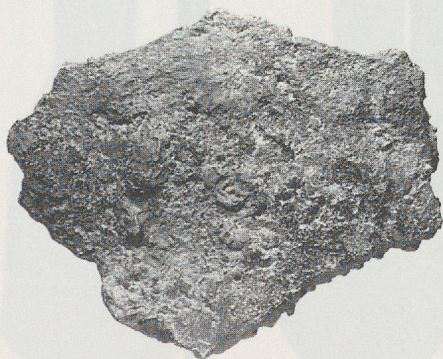
860



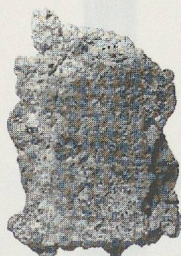
861



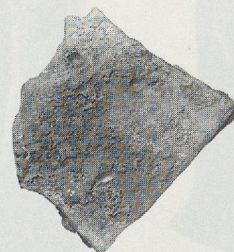
862



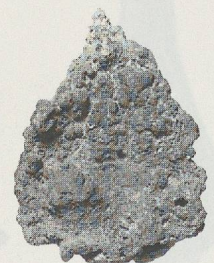
863



864



865



866



867



868



869



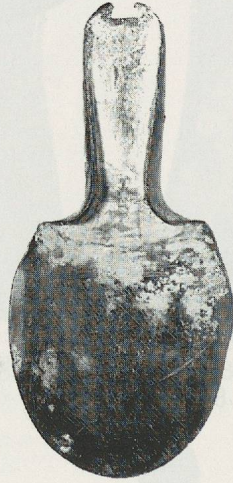
870



871



872



873



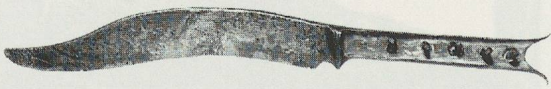
874



875



876



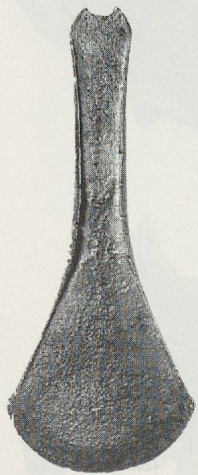
877



878



879



880



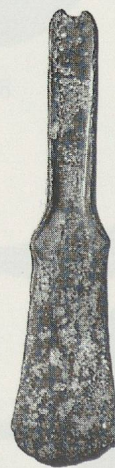
881



882



883



884



885



886



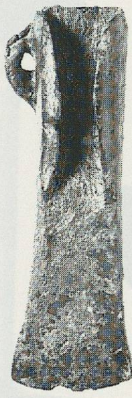
887



888



889



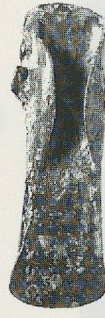
890



891



892



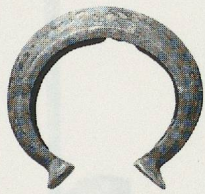
893



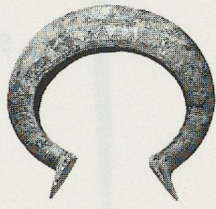
894



895



896



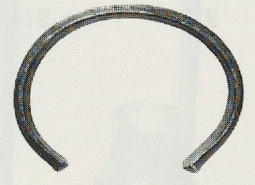
897



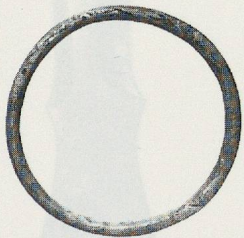
898



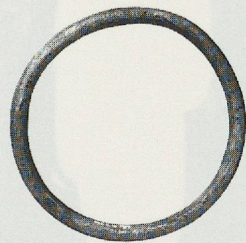
899



900



901



902



903



904



905



906



907



908



909



910



911



912





935



936



937



938



939



940



948



949



941



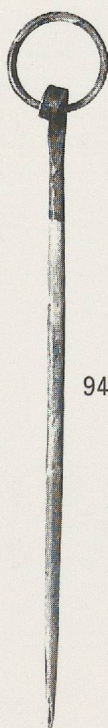
942



943



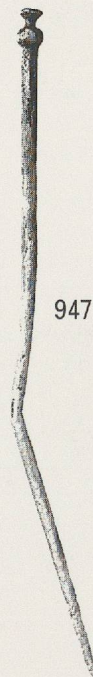
944



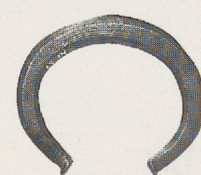
945



946



947



950