

Documentation graphique et photographique

Objekttyp: **Chapter**

Zeitschrift: **Cahiers d'archéologie romande**

Band (Jahr): **166 (2017)**

PDF erstellt am: **29.06.2024**

Nutzungsbedingungen

Die ETH-Bibliothek ist Anbieterin der digitalisierten Zeitschriften. Sie besitzt keine Urheberrechte an den Inhalten der Zeitschriften. Die Rechte liegen in der Regel bei den Herausgebern.

Die auf der Plattform e-periodica veröffentlichten Dokumente stehen für nicht-kommerzielle Zwecke in Lehre und Forschung sowie für die private Nutzung frei zur Verfügung. Einzelne Dateien oder Ausdrücke aus diesem Angebot können zusammen mit diesen Nutzungsbedingungen und den korrekten Herkunftsbezeichnungen weitergegeben werden.

Das Veröffentlichen von Bildern in Print- und Online-Publikationen ist nur mit vorheriger Genehmigung der Rechteinhaber erlaubt. Die systematische Speicherung von Teilen des elektronischen Angebots auf anderen Servern bedarf ebenfalls des schriftlichen Einverständnisses der Rechteinhaber.

Haftungsausschluss

Alle Angaben erfolgen ohne Gewähr für Vollständigkeit oder Richtigkeit. Es wird keine Haftung übernommen für Schäden durch die Verwendung von Informationen aus diesem Online-Angebot oder durch das Fehlen von Informationen. Dies gilt auch für Inhalte Dritter, die über dieses Angebot zugänglich sind.

21 Documentation graphique et photographique

Sauf indication contraire, le mobilier est illustré aux échelles suivantes :

Epées, fourreaux : 1:4

Fers de lance, talon de lance, éléments de boucliers, mors, phalères, forces, outils agricoles, rasoir, sac en cuir, trident, talon de gaffe, produits semi-finis, quincaillerie : 1:2

Agrafes de ceinturon, fibules, pincettes, petits outils (ciseaux, gouges, etc.), aiguilles, hameçons, anneaux : 2:3

Dessins réalisés par J. Anastassov et V. Tankov, sauf 108-112 M. Volken.

Photos du mobilier : M. Vautravers (LAP/ UNIGE)

Photos restes osseux : ind. 3-15 M. Schultes (Universität Mainz), UNIGE-1942-85 M. Vautravers (LAP/ UNIGE)



chagrinage fourreaux



bois



matière dure animale



émail

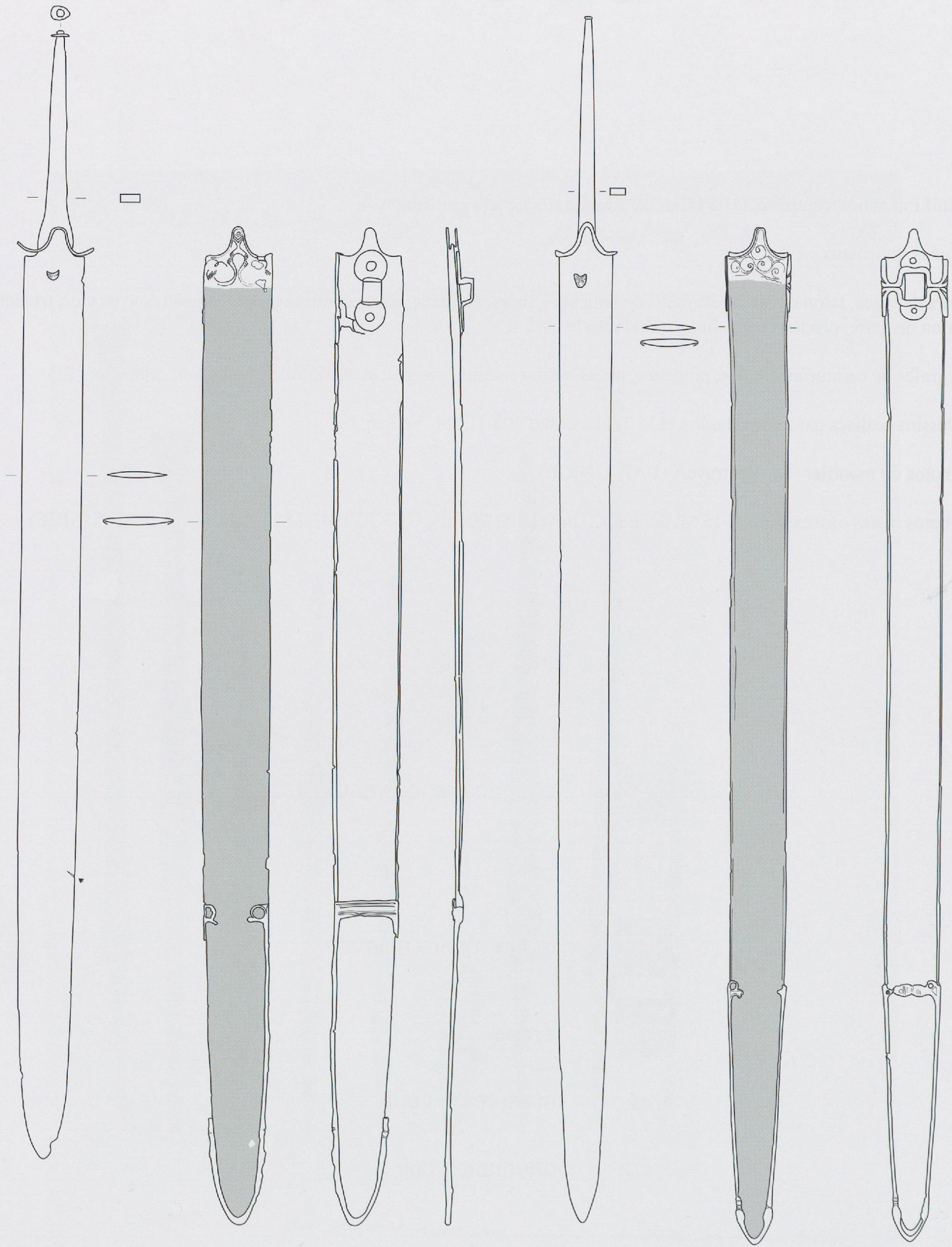


marque de coup



orientation cuir

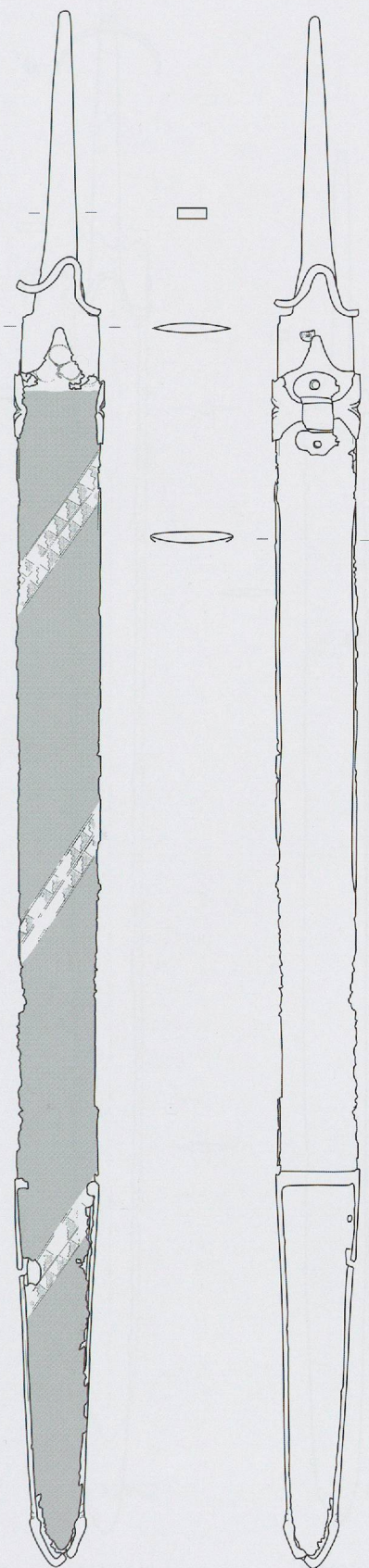
Pl. 1



1/ M0549

1:4

2/ M0548

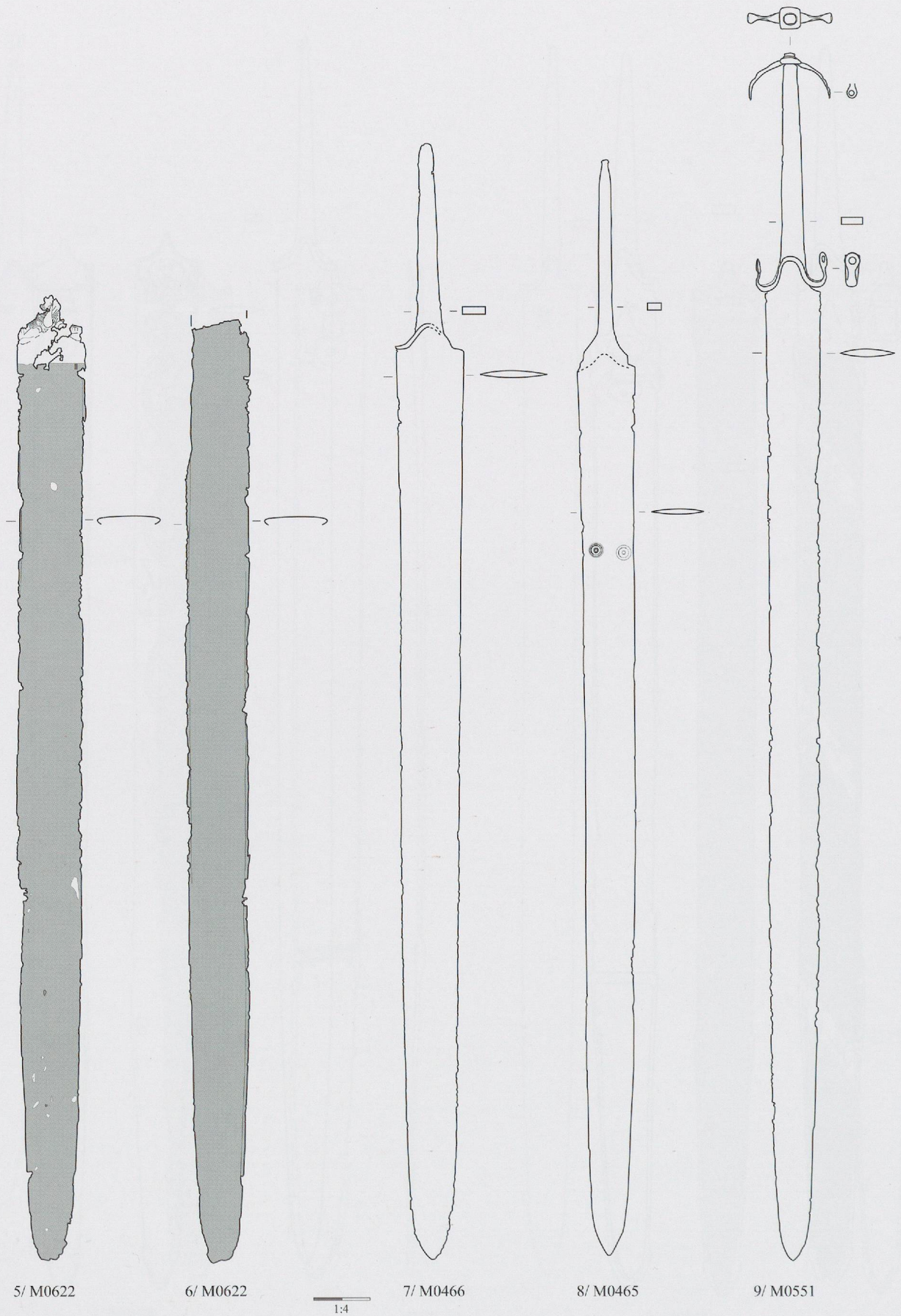


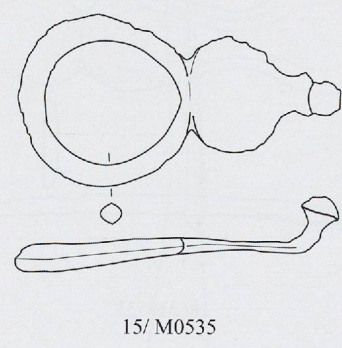
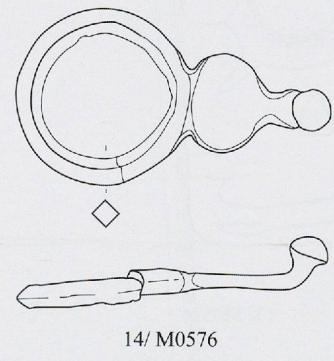
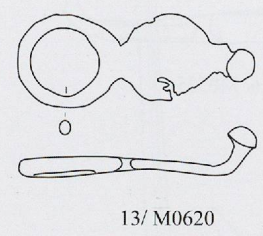
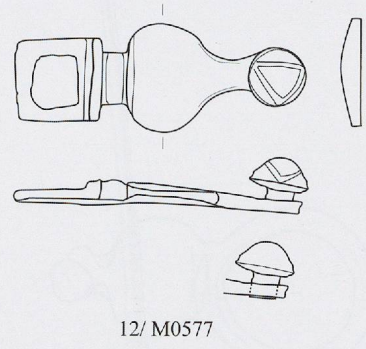
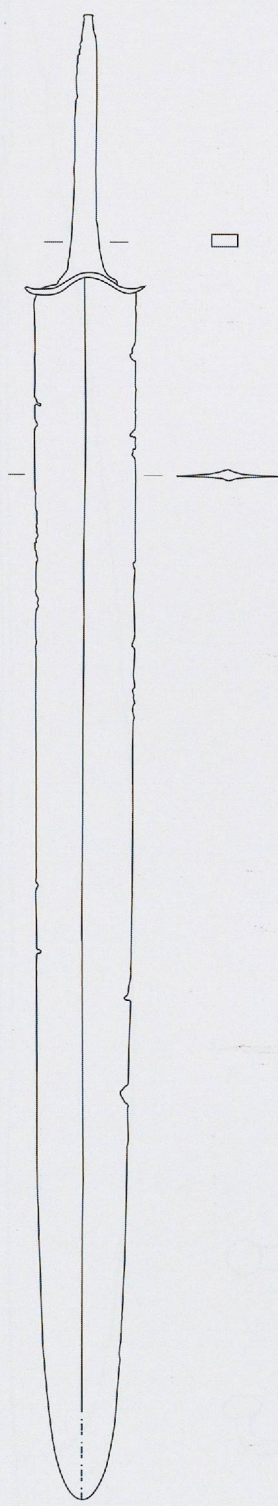
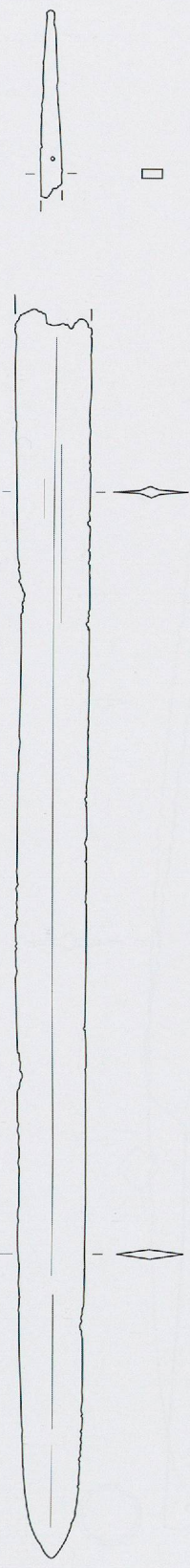
3/ M0464



4/ M0550

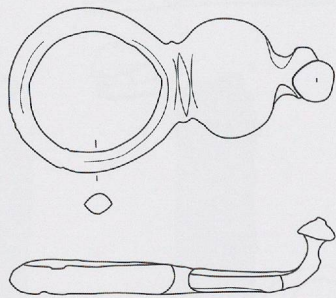
Pl. 3



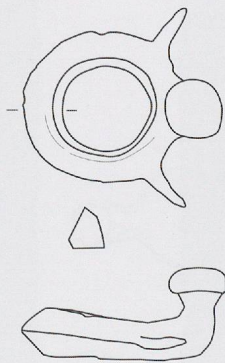


1:4

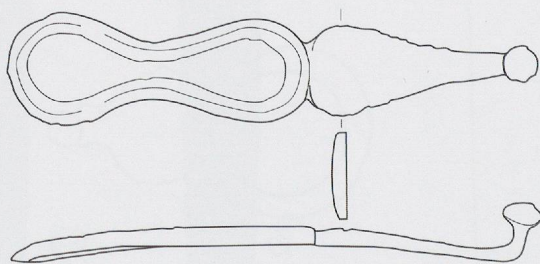
Pl. 5



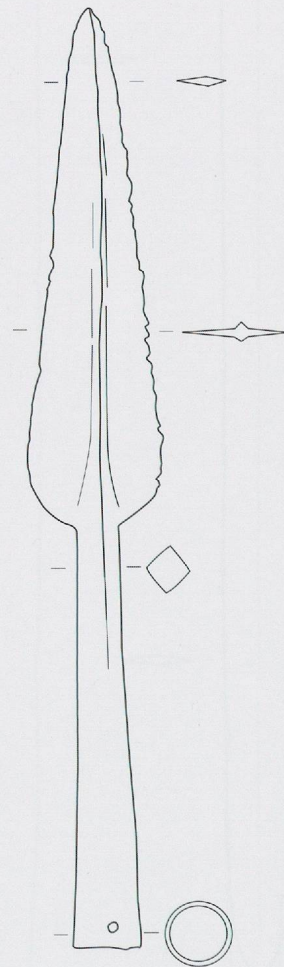
16/ M0525



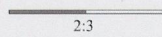
17/ M0526

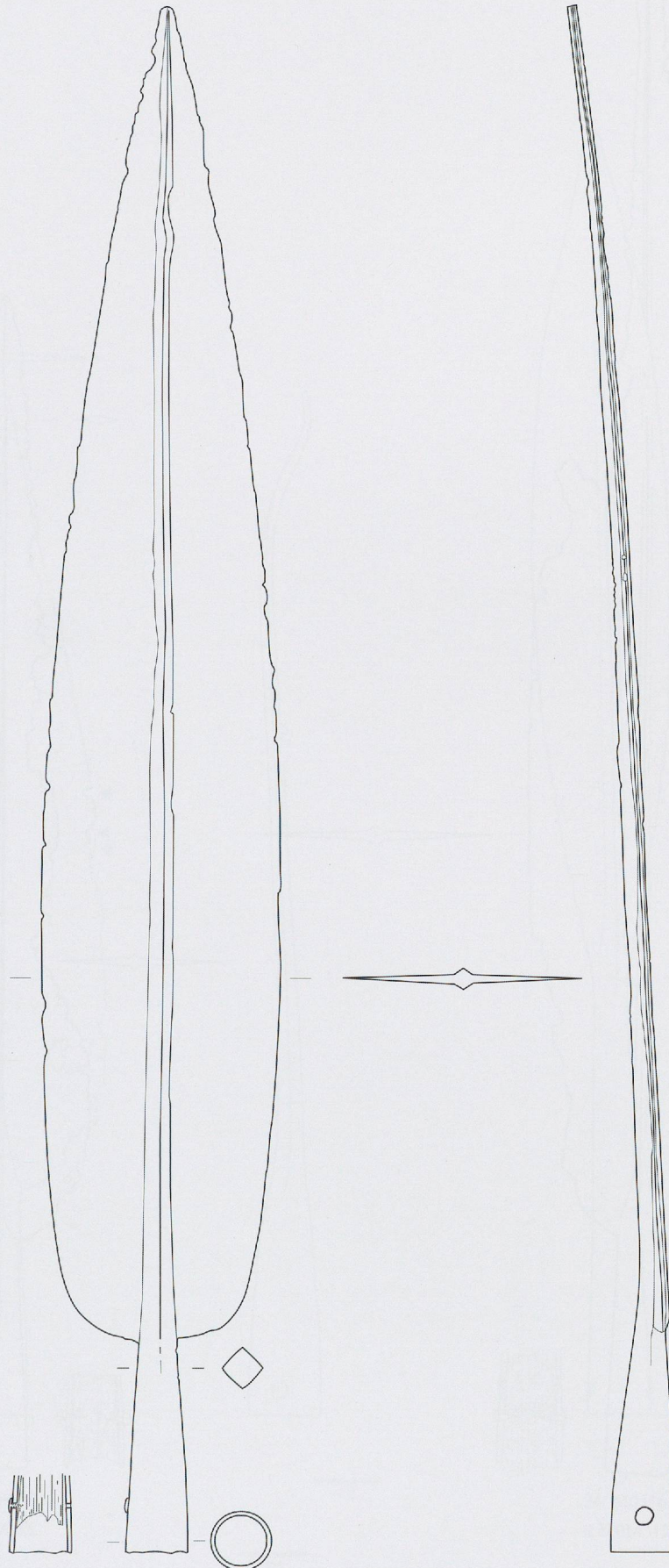


18/ M0533



19/ M0517

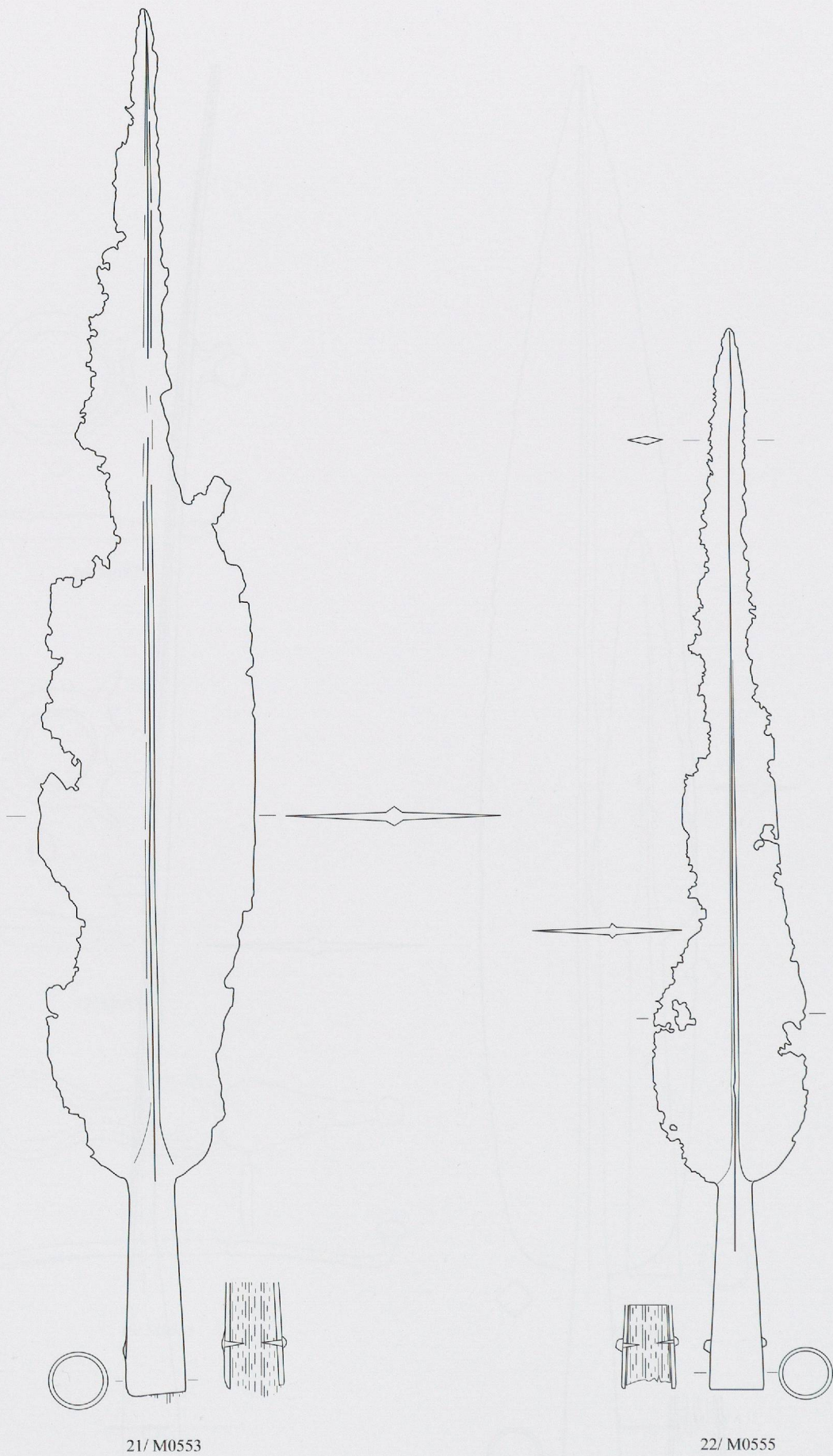




20/ M0514

1:2

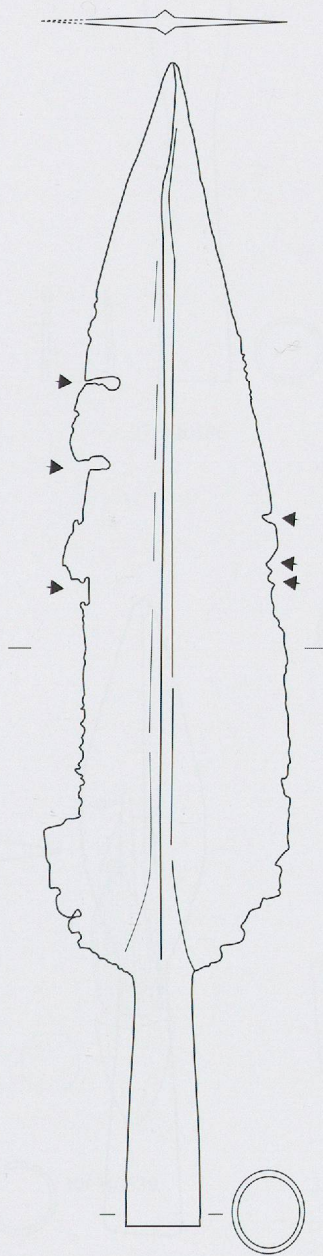
Pl. 7



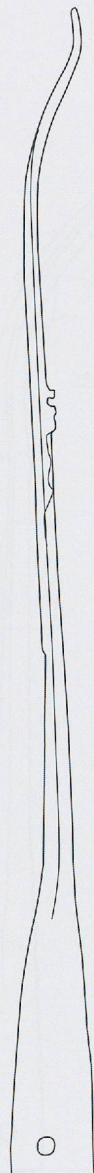
21/M0553

22/M0555

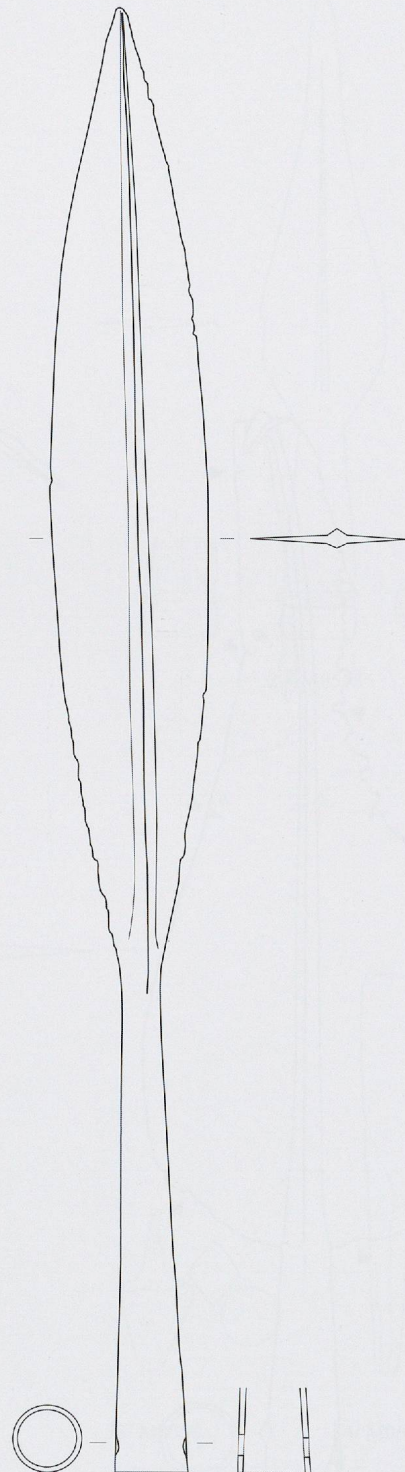
1:2



23/ M0554

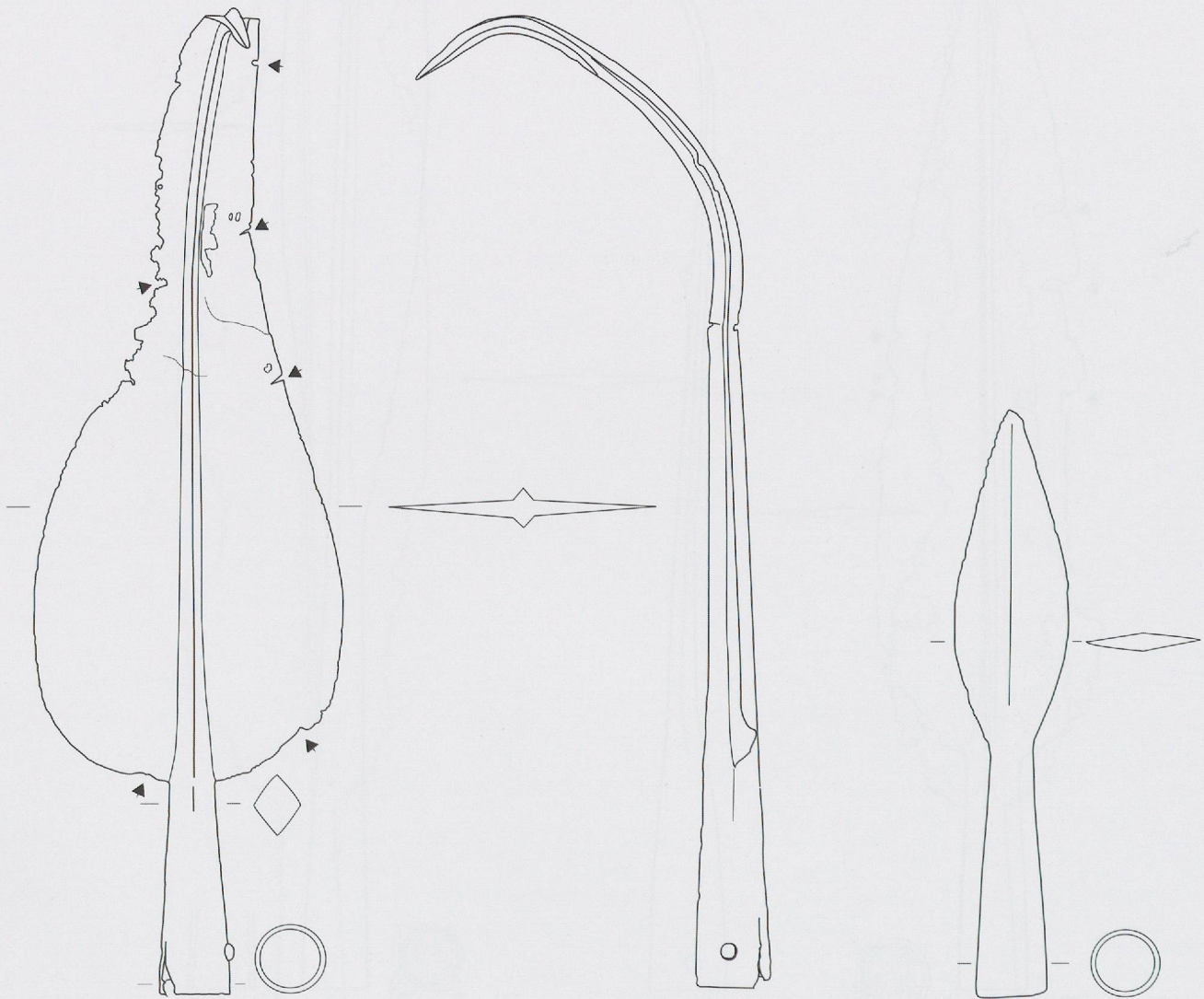


1:2



24/ M0516

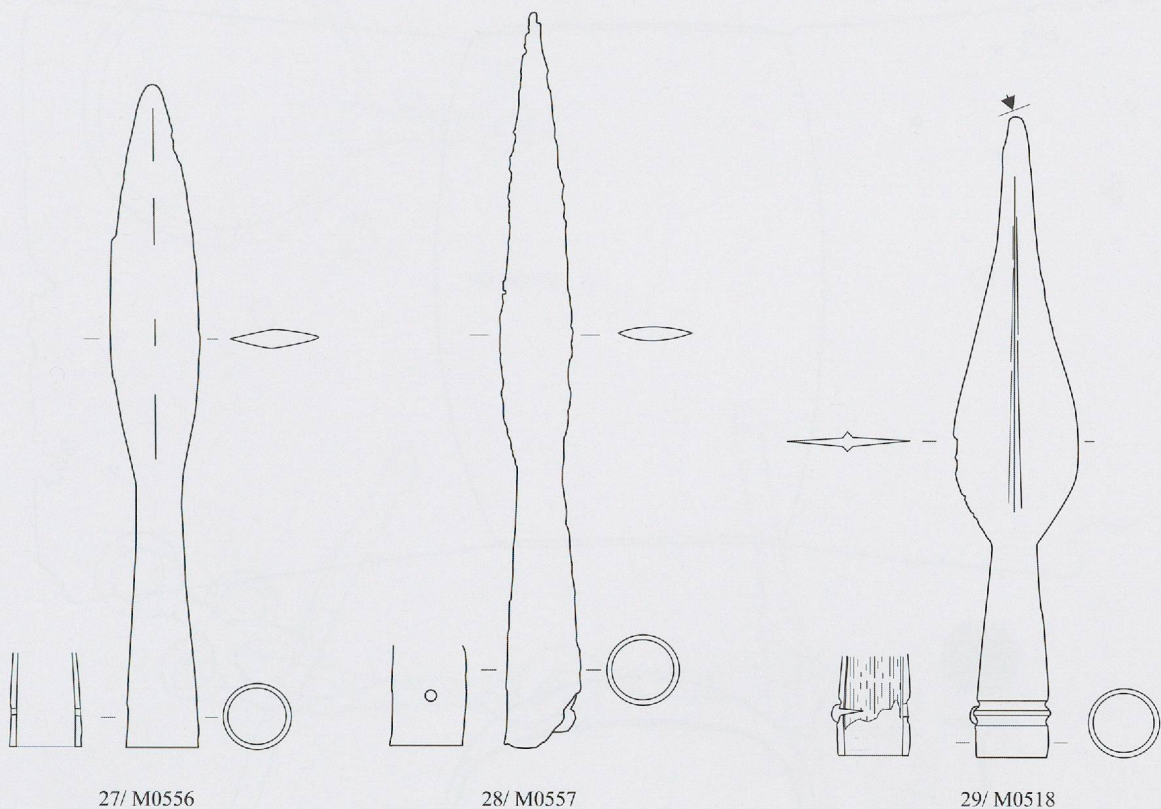
Pl. 9



25/ M0515

26/ M0519

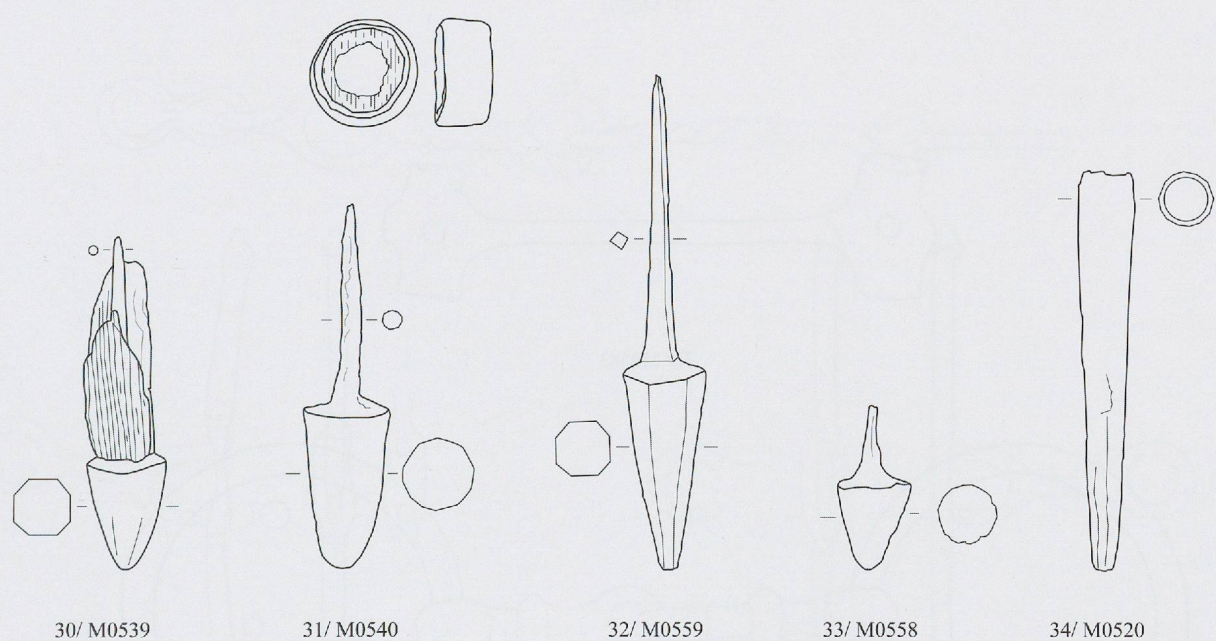
1:2



27/ M0556

28/ M0557

29/ M0518



30/ M0539

31/ M0540

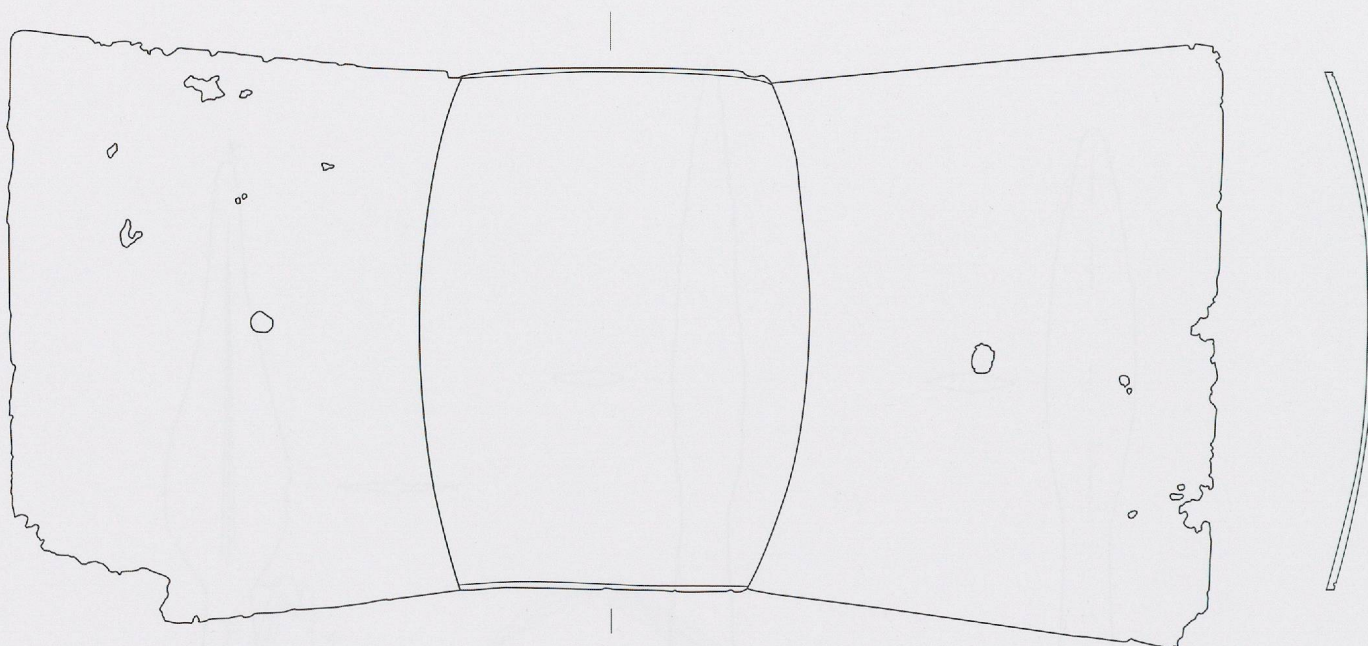
32/ M0559

33/ M0558

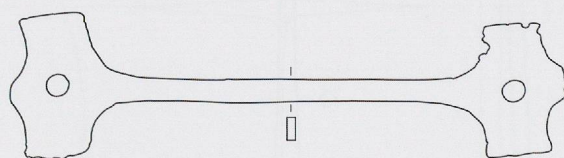
34/ M0520

1:2

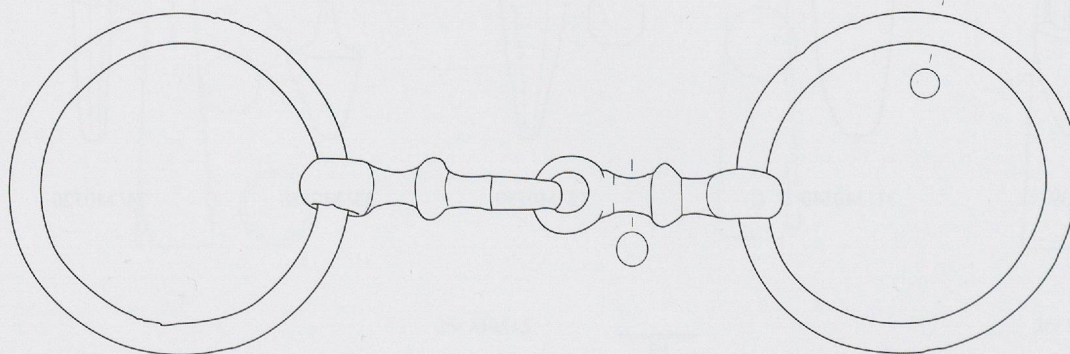
Pl. 11



35/ M0541

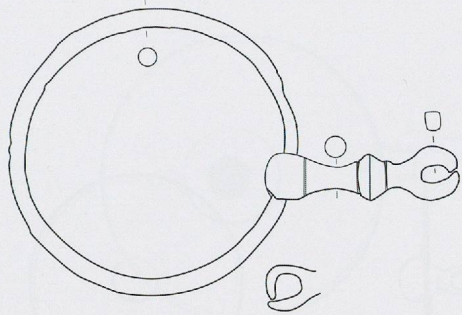


36/ M0583

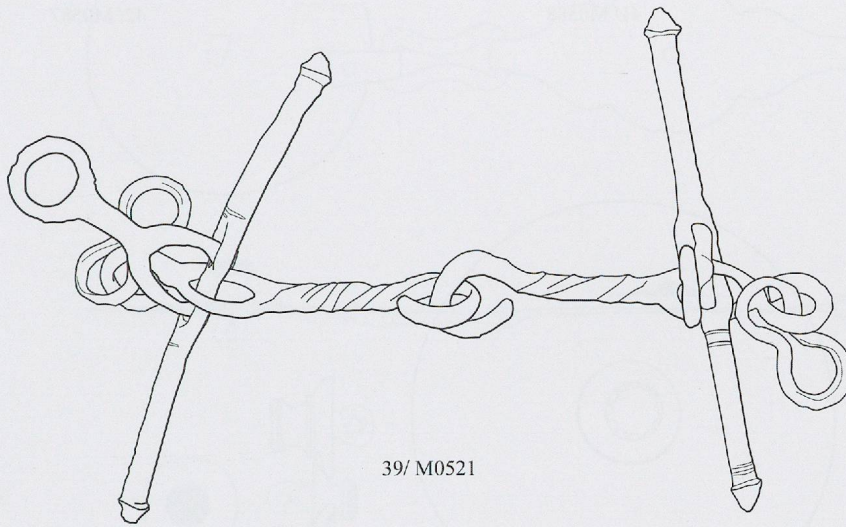


37/ M0522

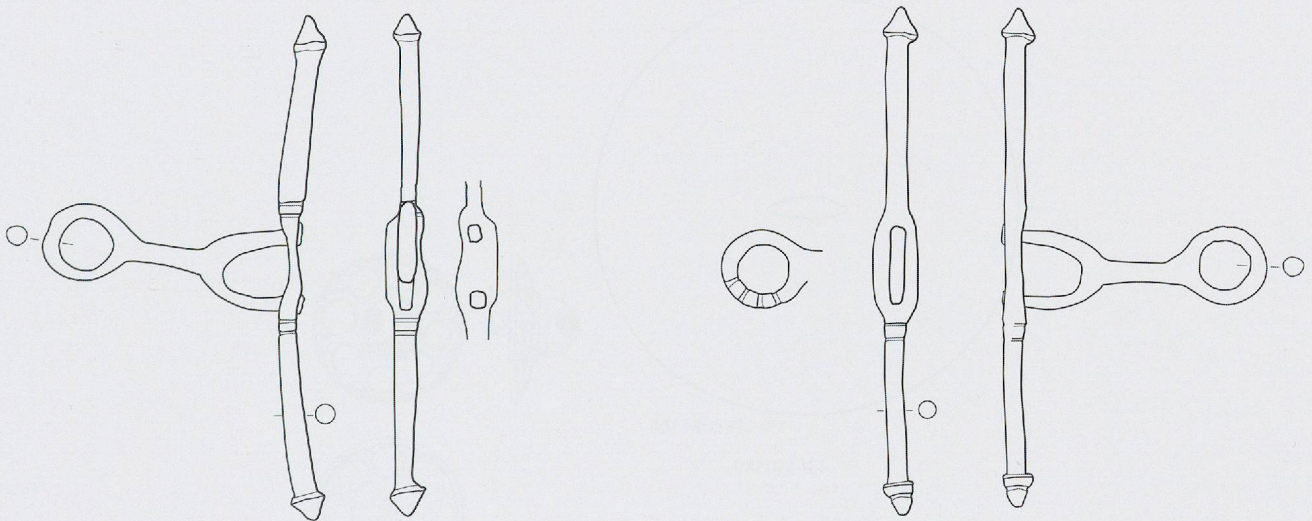
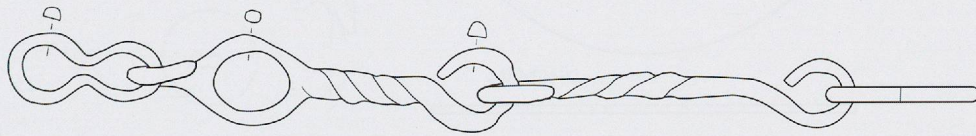
1:2



38/ M0568

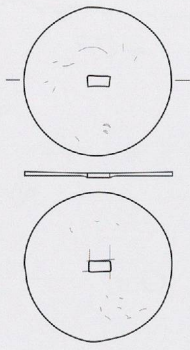


39/ M0521

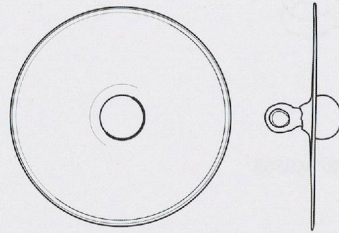


1:2

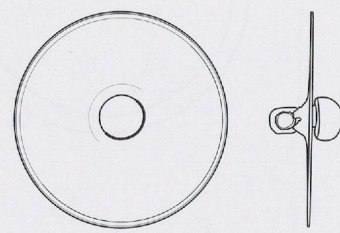
Pl. 13



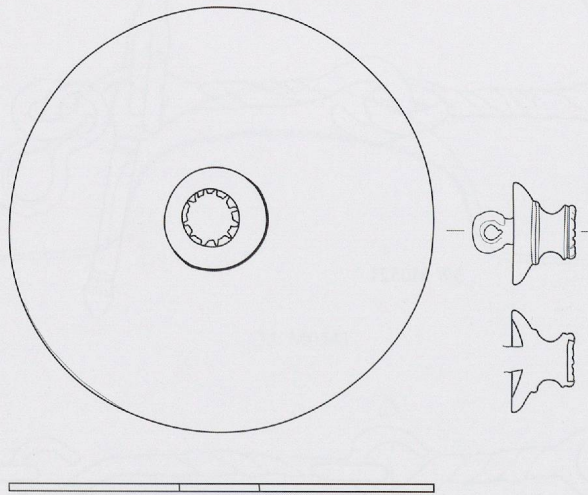
40/ M0590



41/ M0588

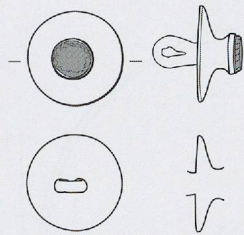
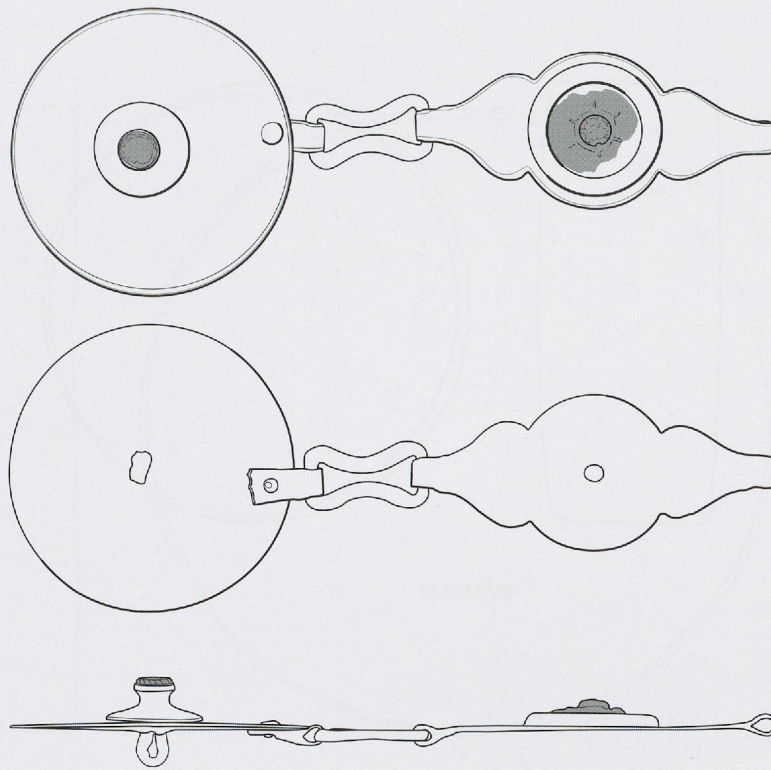


42/ M0587

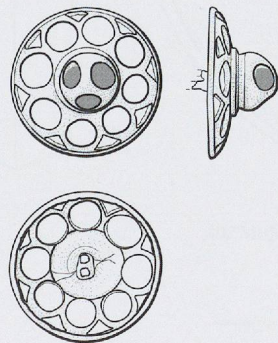


43/ M0589

1:2



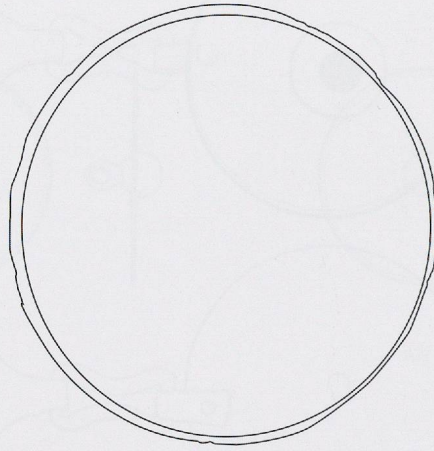
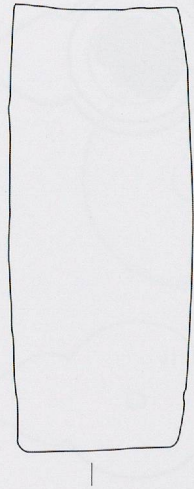
44/ M0592



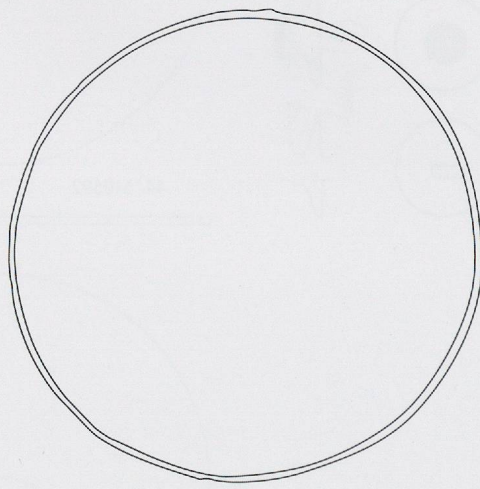
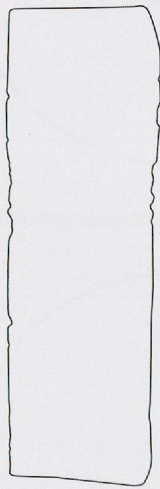
45/ M0591

1:2

Pl. 15

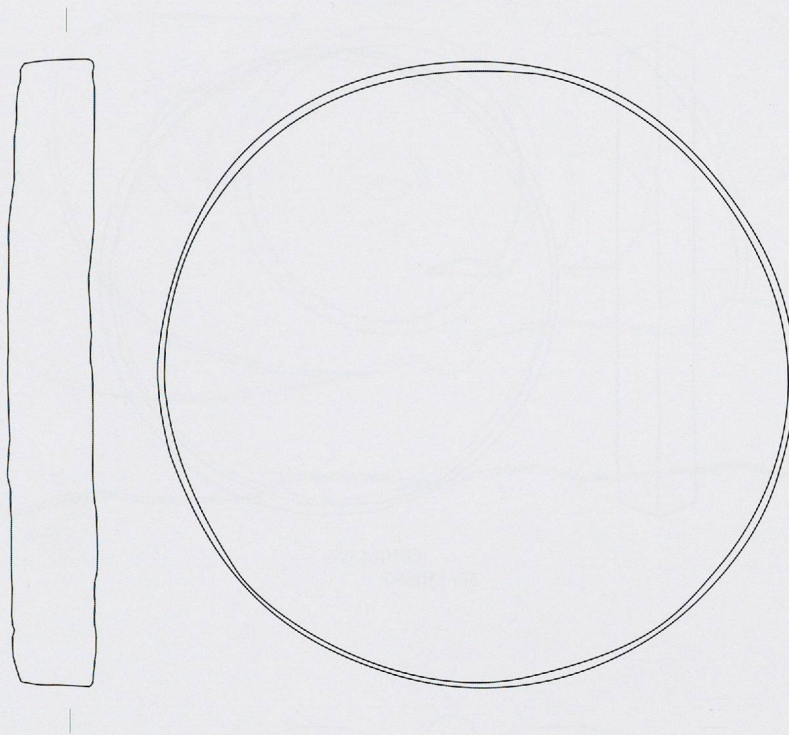


46/ M0579

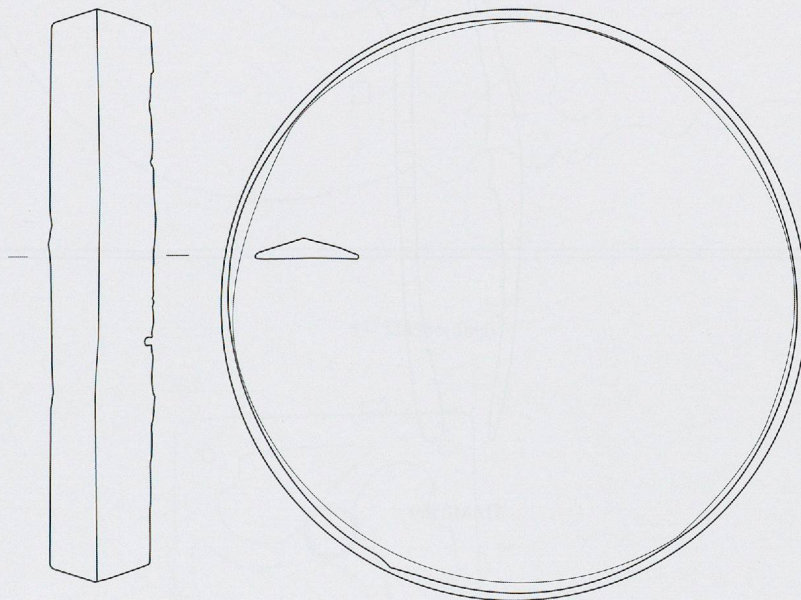


47/ M0578

1:2



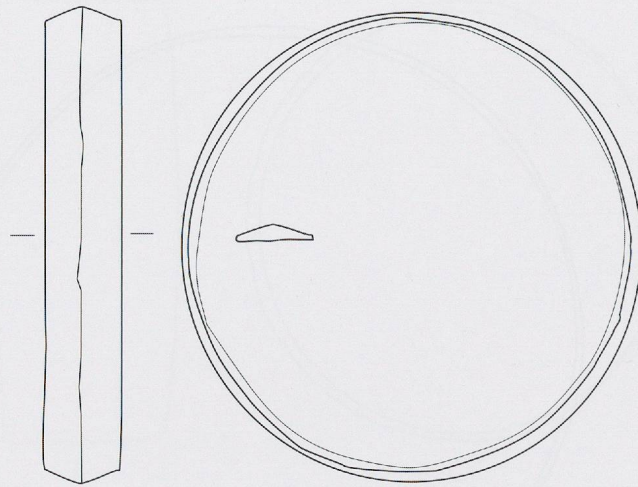
48/ M0582



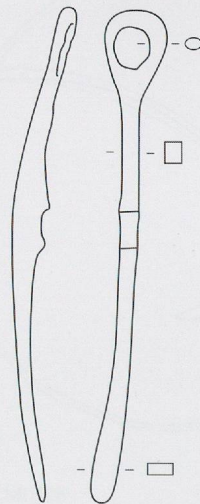
49/ M0581

1:2

Pl. 17

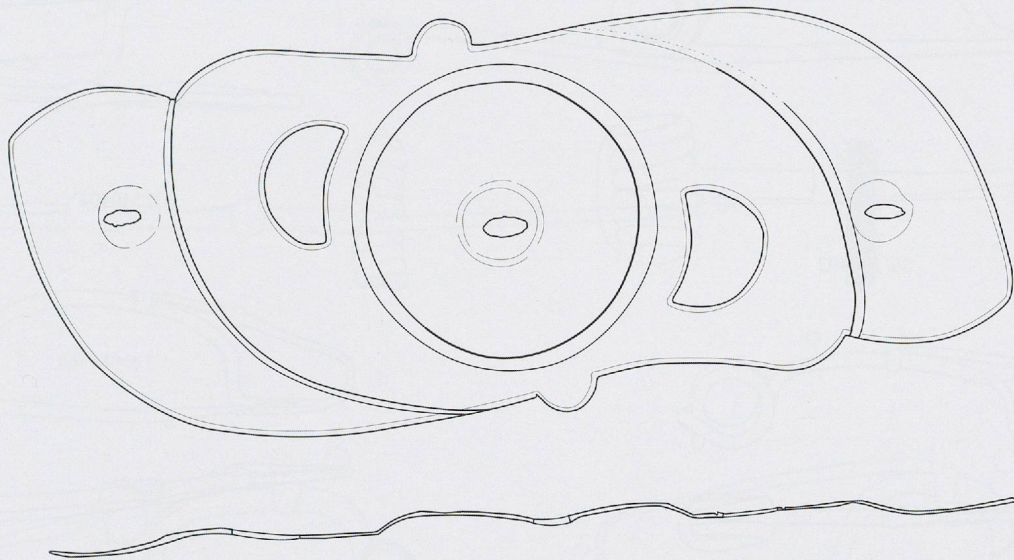


50/ M0580

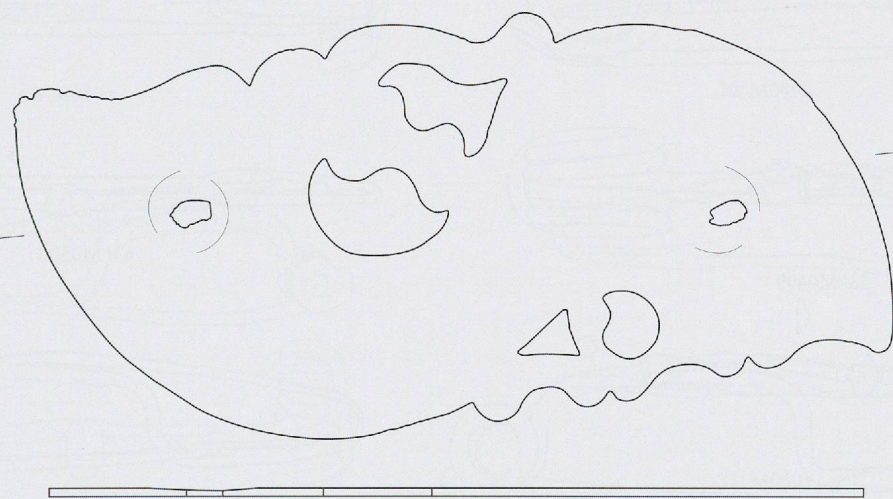


51/ M0569

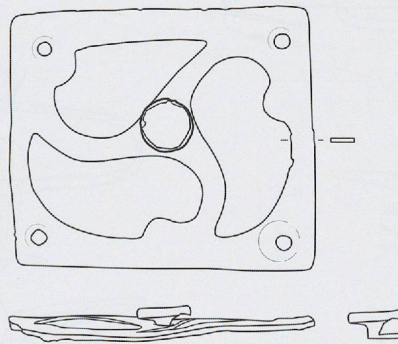
1:2



52/ M0585



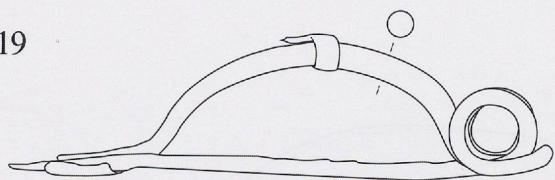
53/ M0586(5bis)



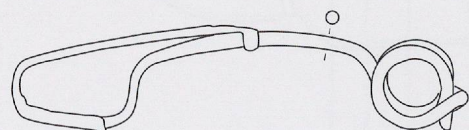
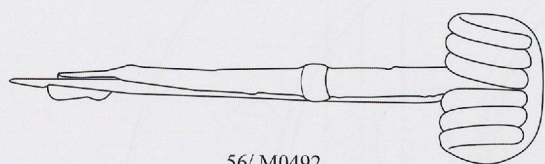
54/ M0584

1:2

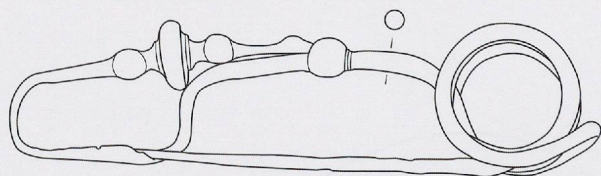
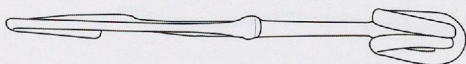
Pl. 19



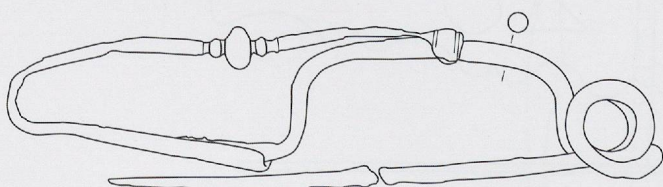
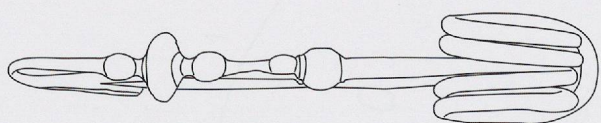
56/ M0492



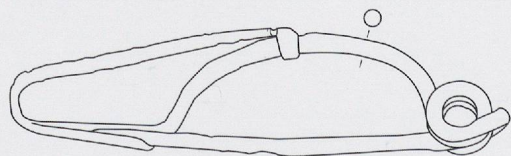
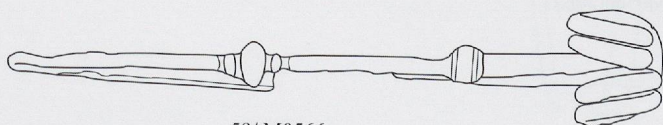
57/ M0567



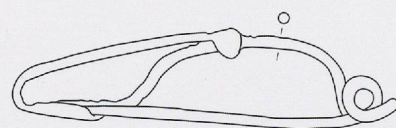
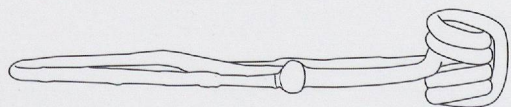
58/ M0499



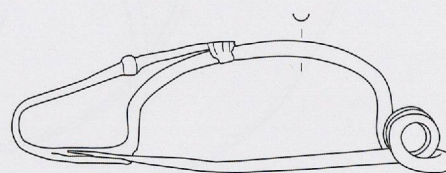
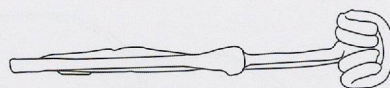
59/ M0566



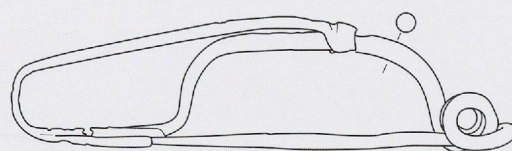
60/ M0493



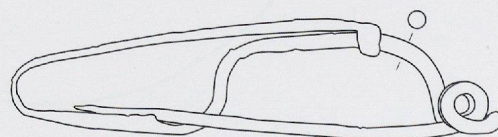
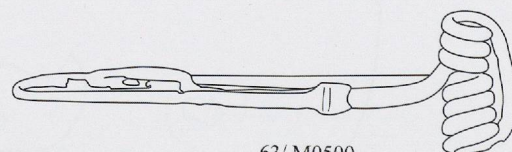
61/ M0504



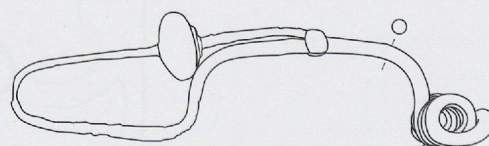
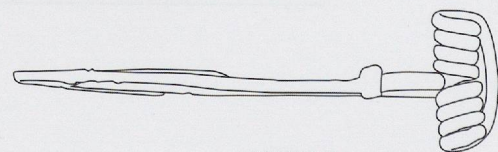
62/ M0496



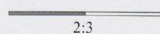
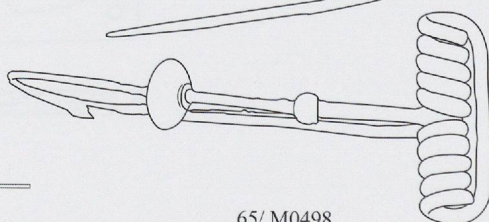
63/ M0500



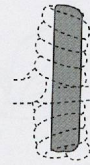
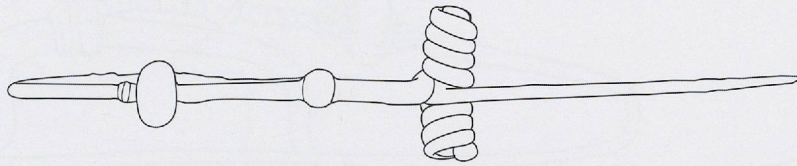
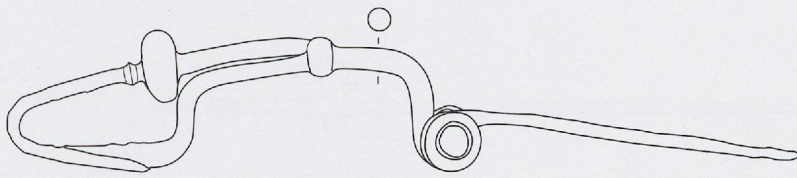
64/ M0617



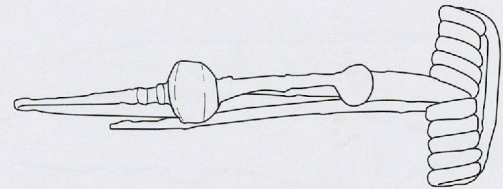
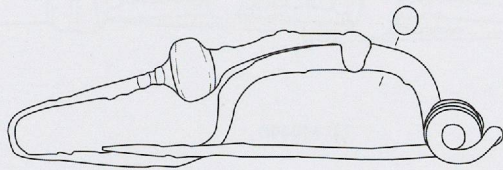
65/ M0498



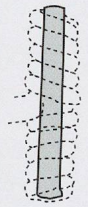
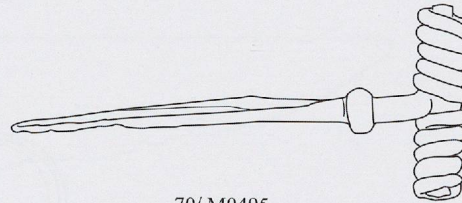
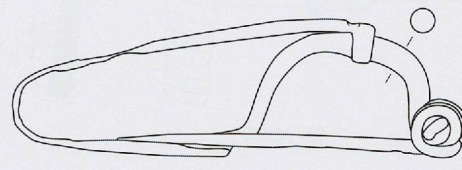
55/ M0506 : voir photo pl. 54



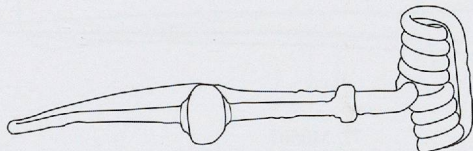
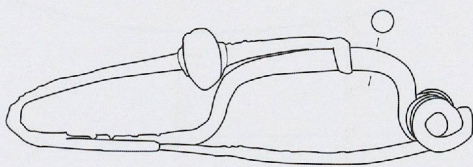
66/ M0491



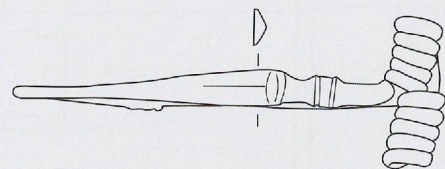
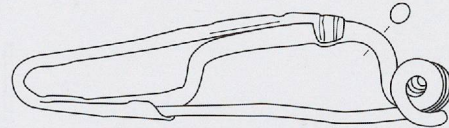
67/ M0494



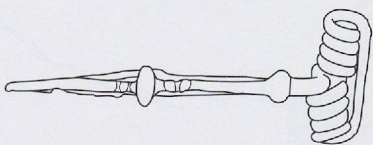
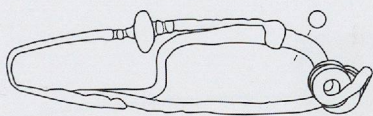
70/ M0495



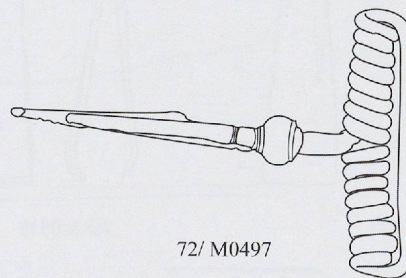
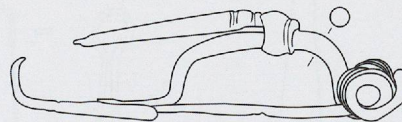
68/ M0502



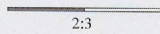
71/ M0501



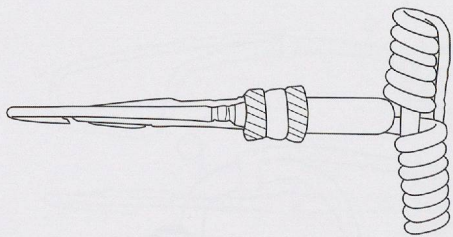
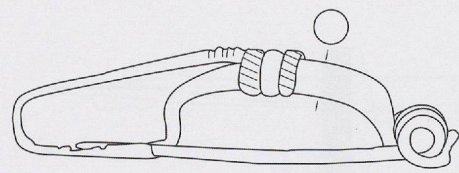
69/ M0505



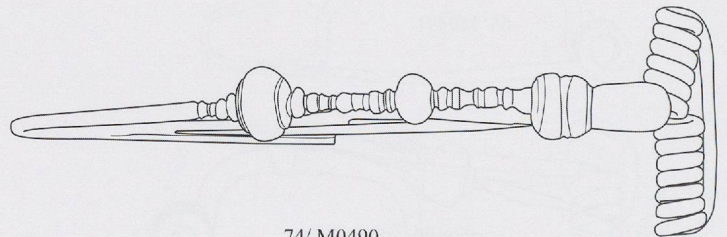
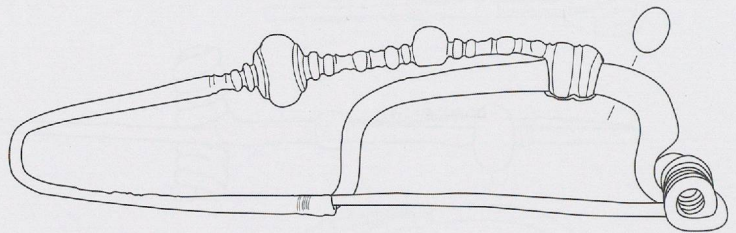
72/ M0497



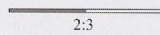
Pl. 21



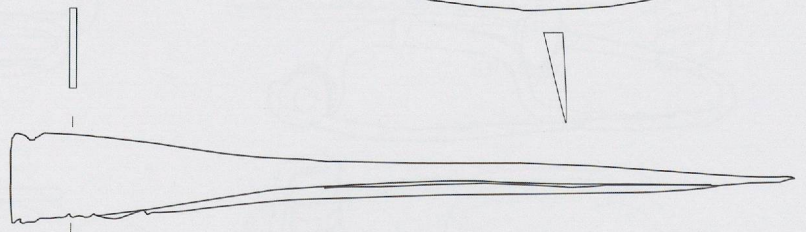
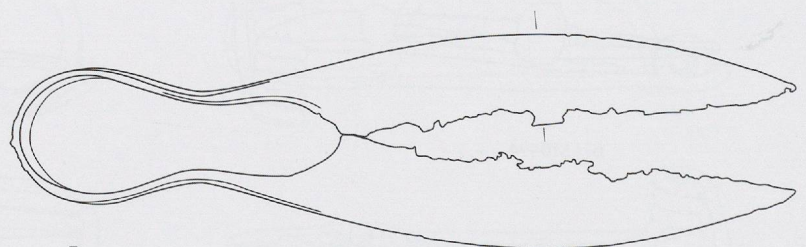
73/ M0503



74/ M0490

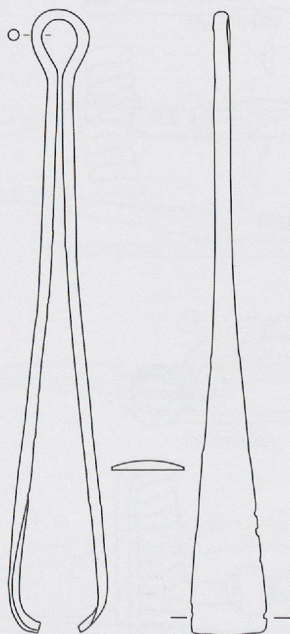


2:3

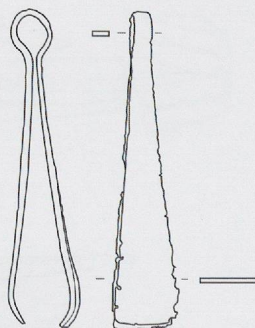


77/ M0507

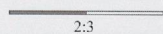
1:2



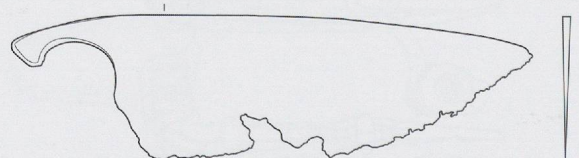
75/ M0537



76/ M0538

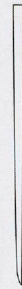
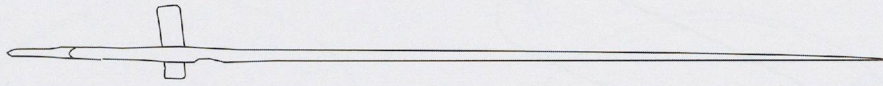


2:3

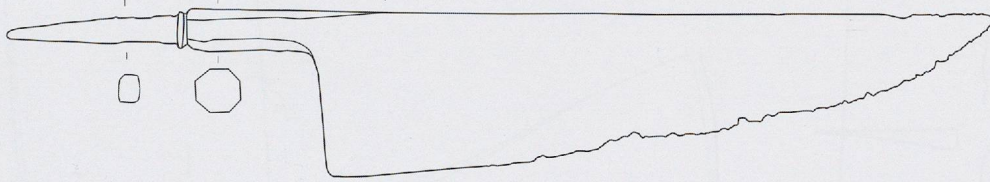


78/ M0562

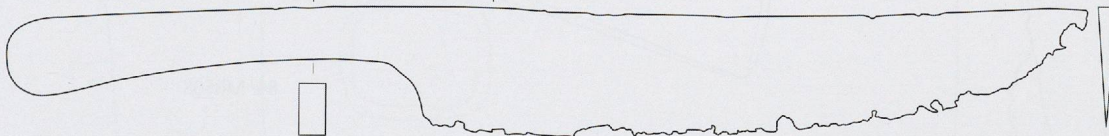
1:2



79/ M0510



80/ M0511



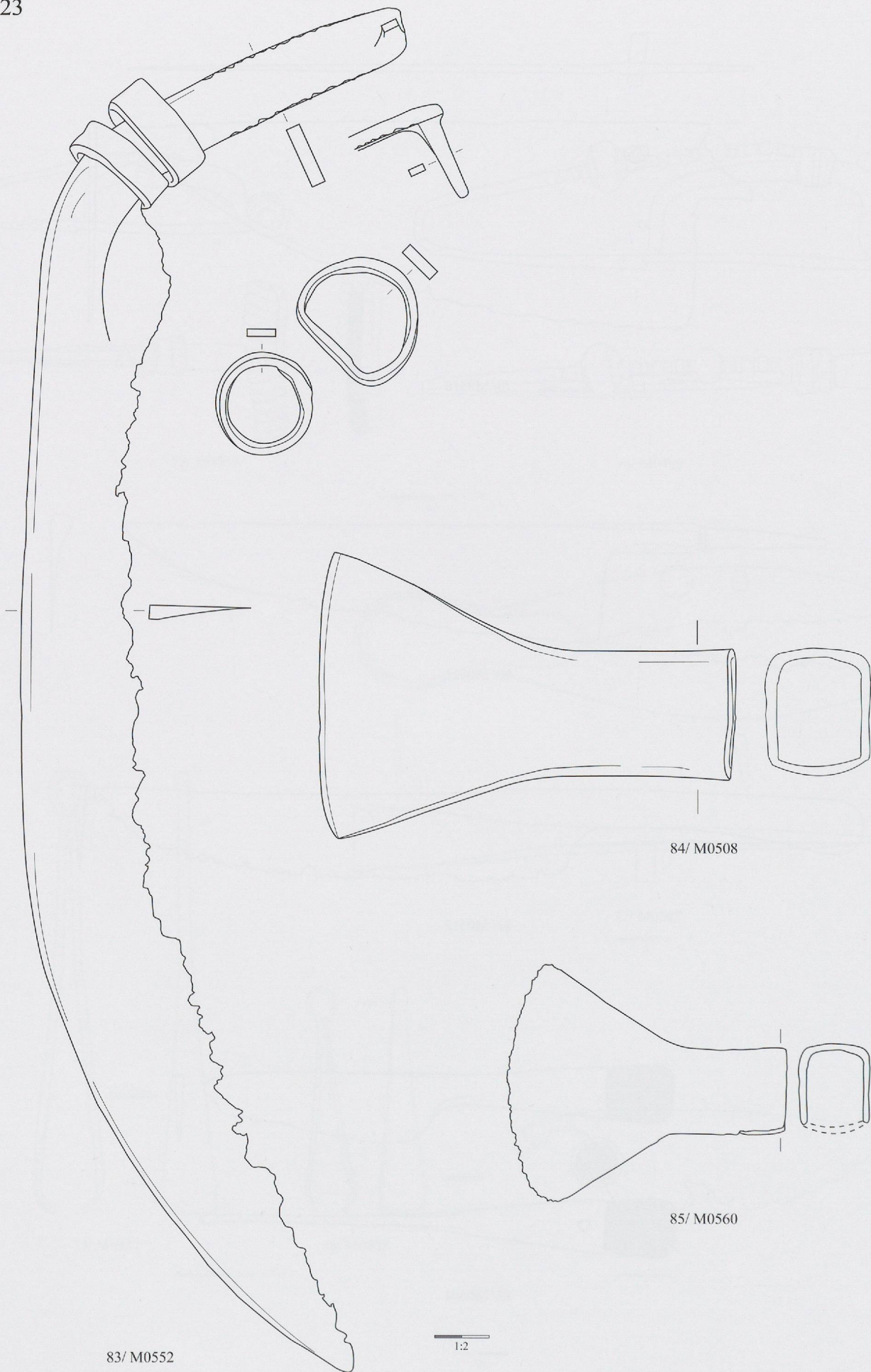
81/ M0512



82/ M0561



Pl. 23

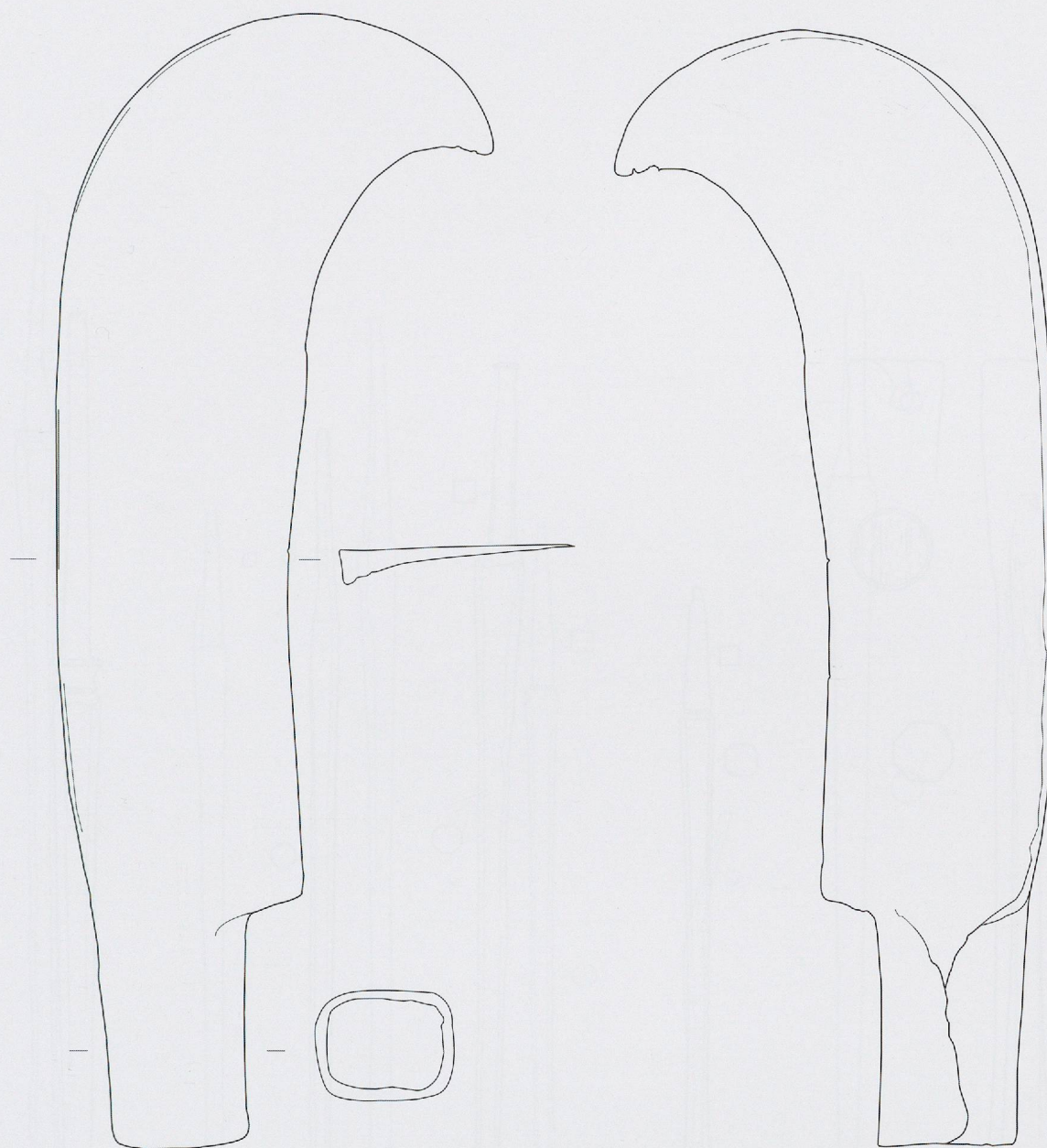


83/M0552

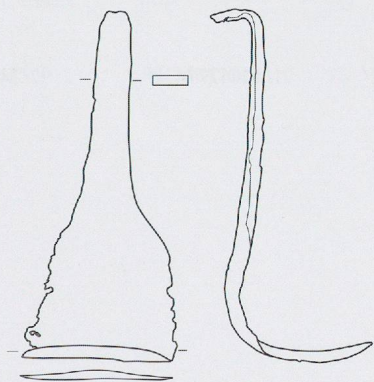
84/M0508

85/M0560

1:2



86/ M0470

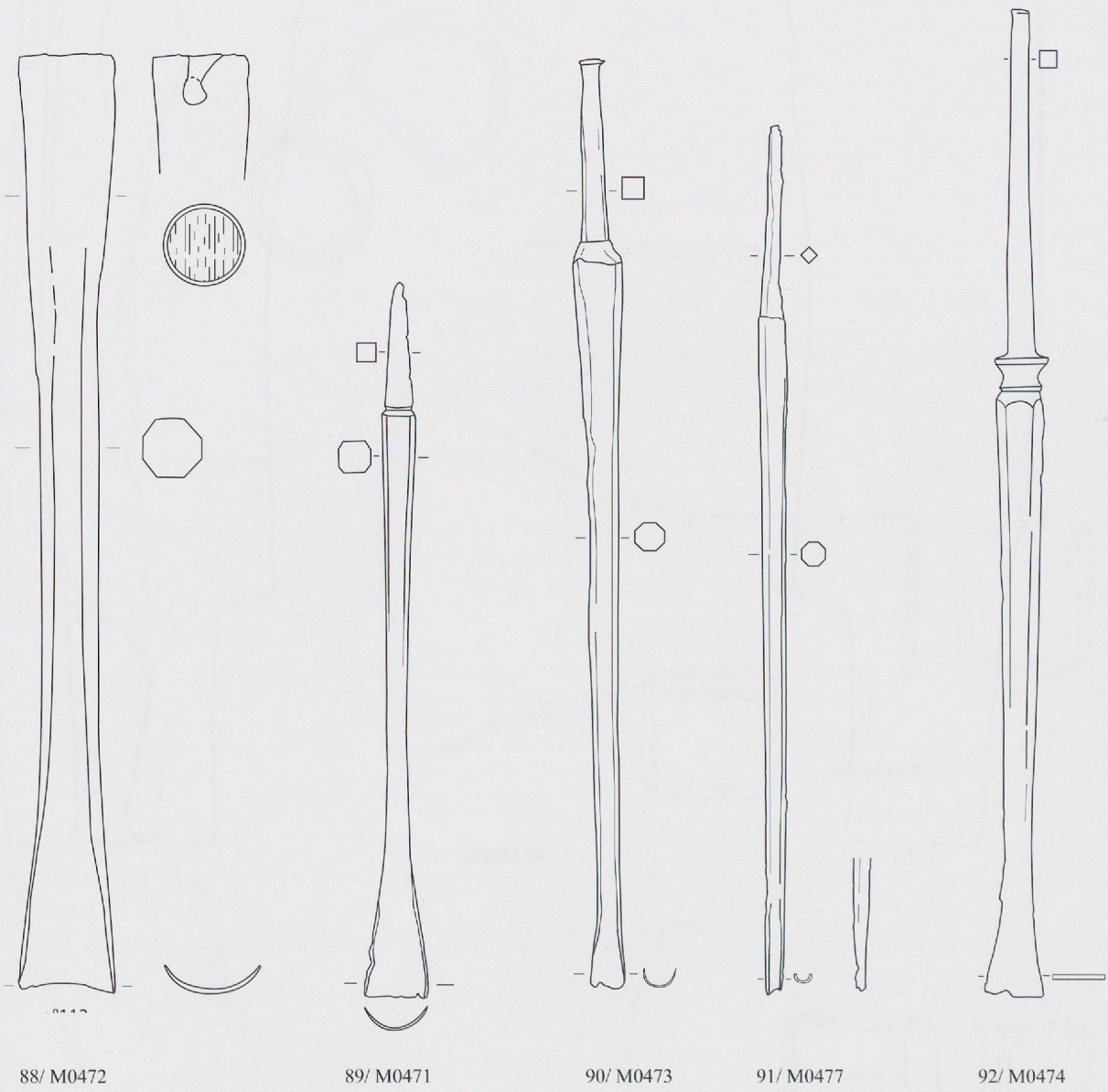


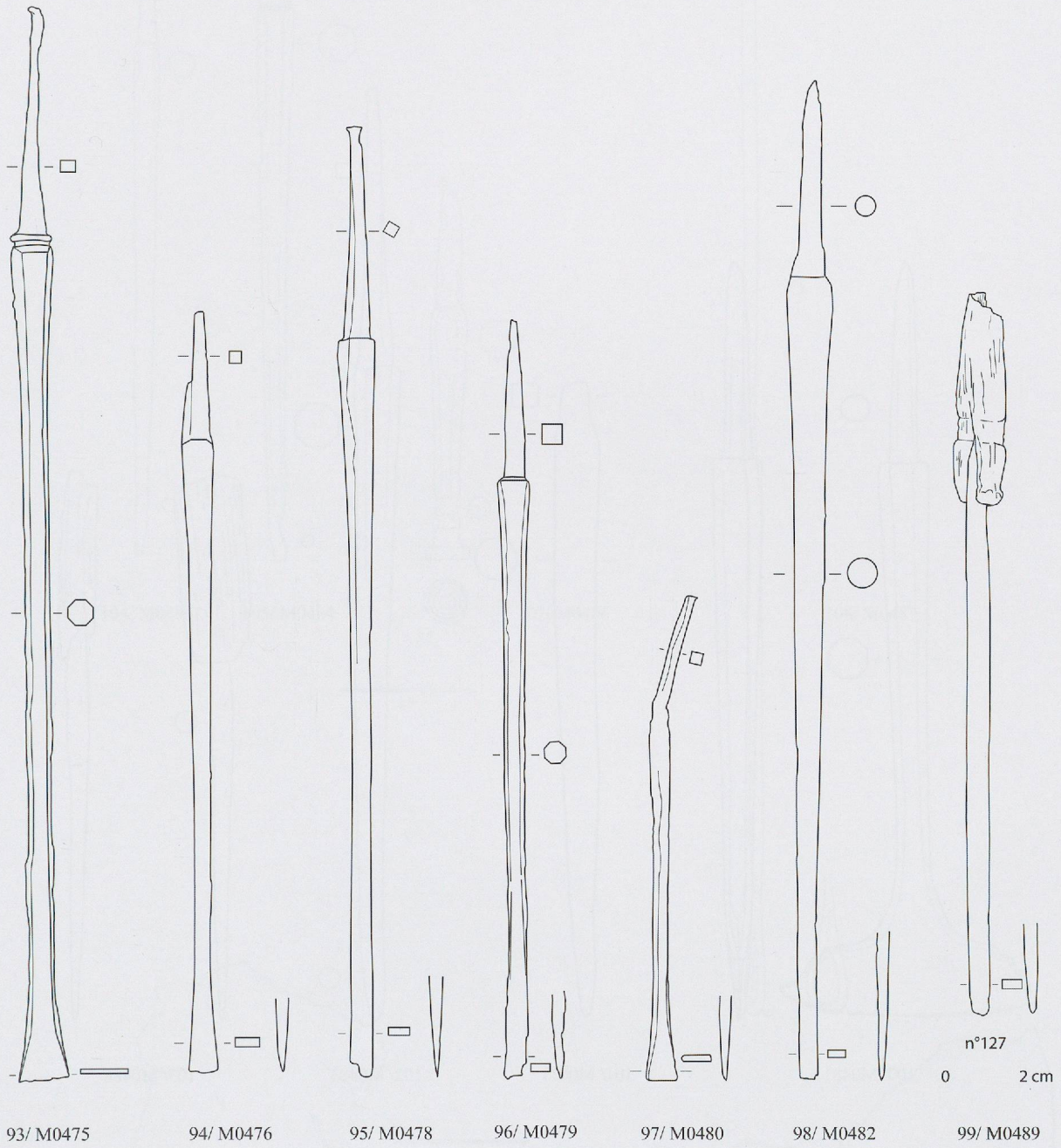
87/ M0513



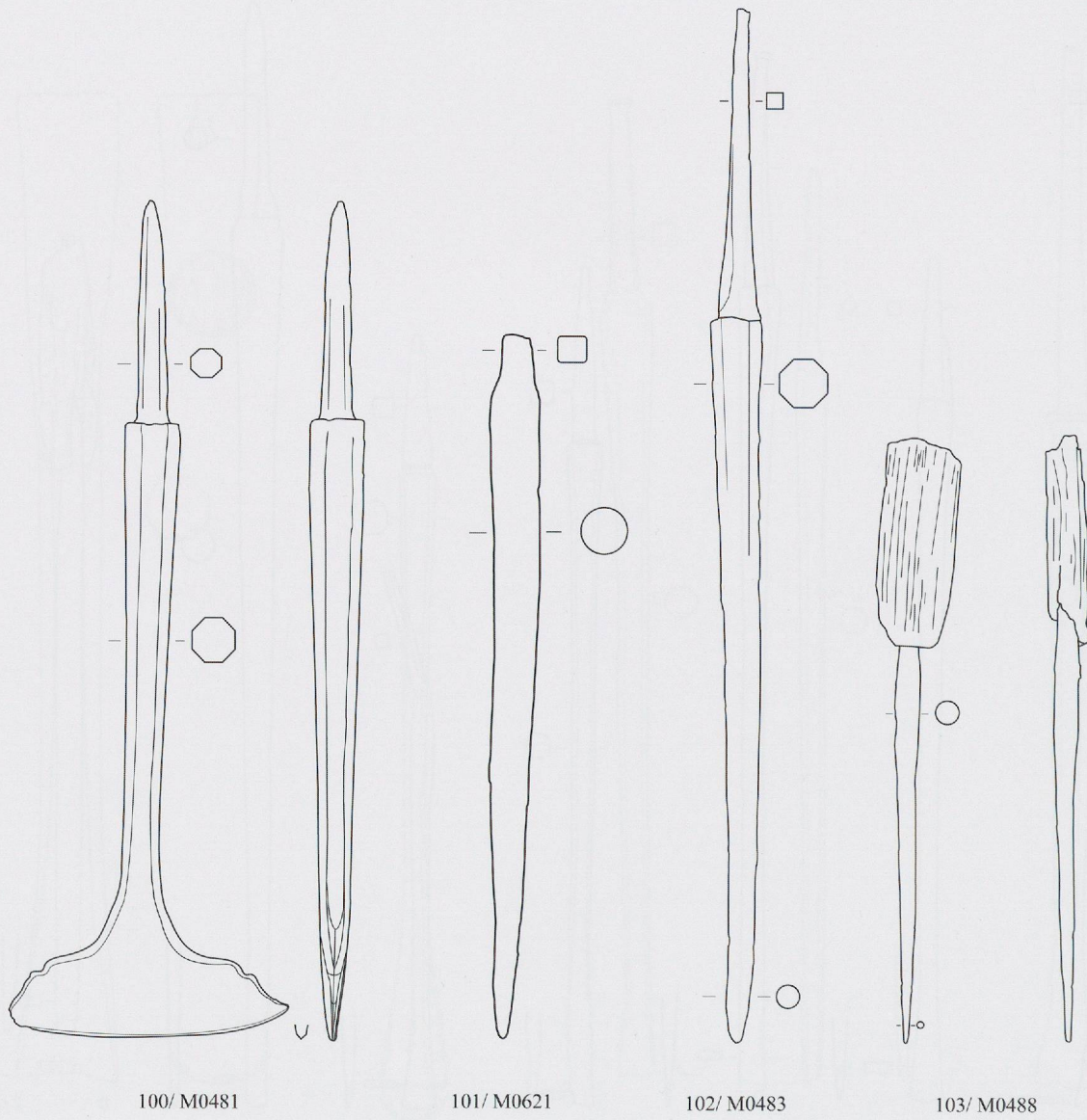
1:2

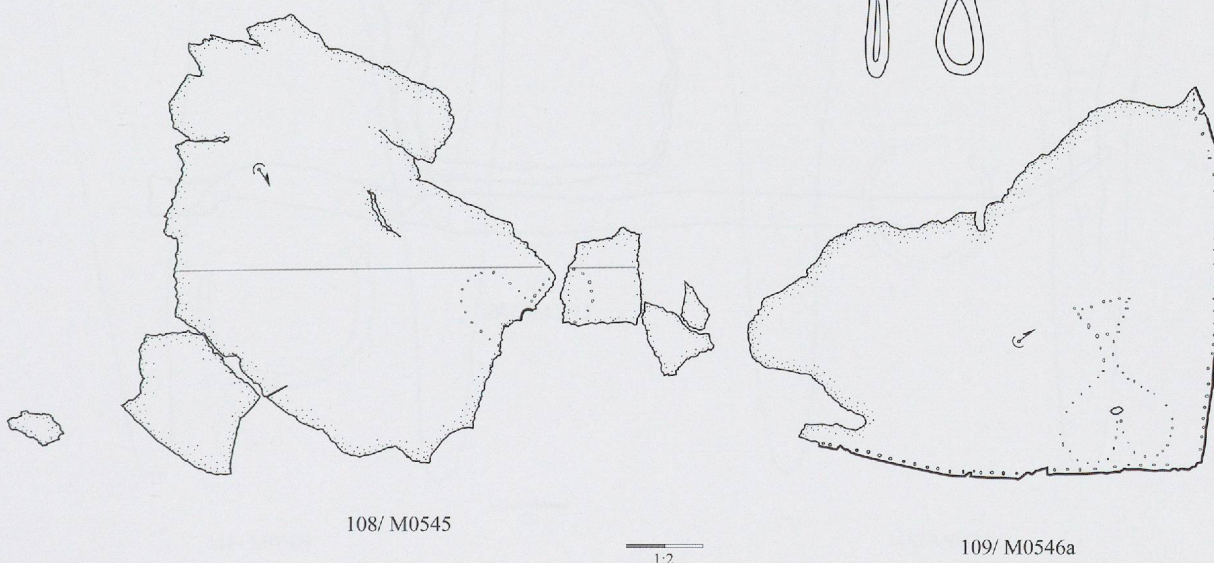
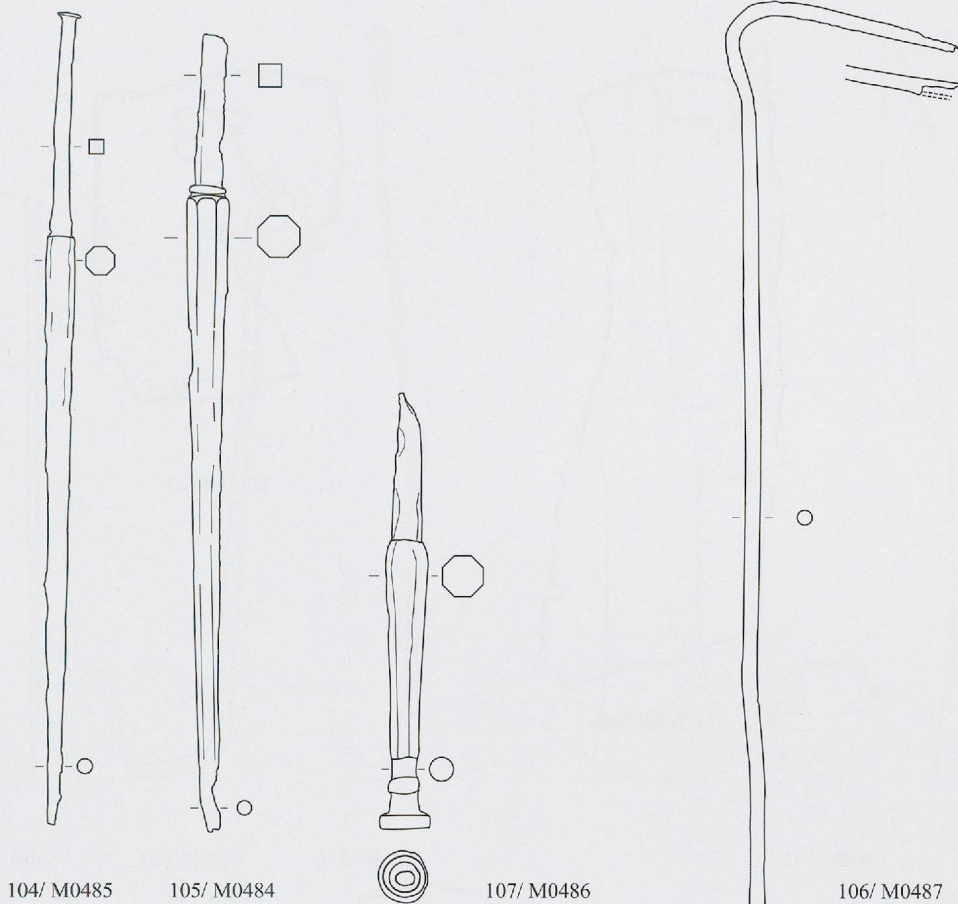
Pl. 25



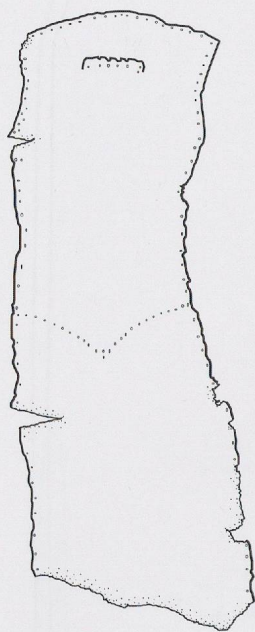


Pl. 27





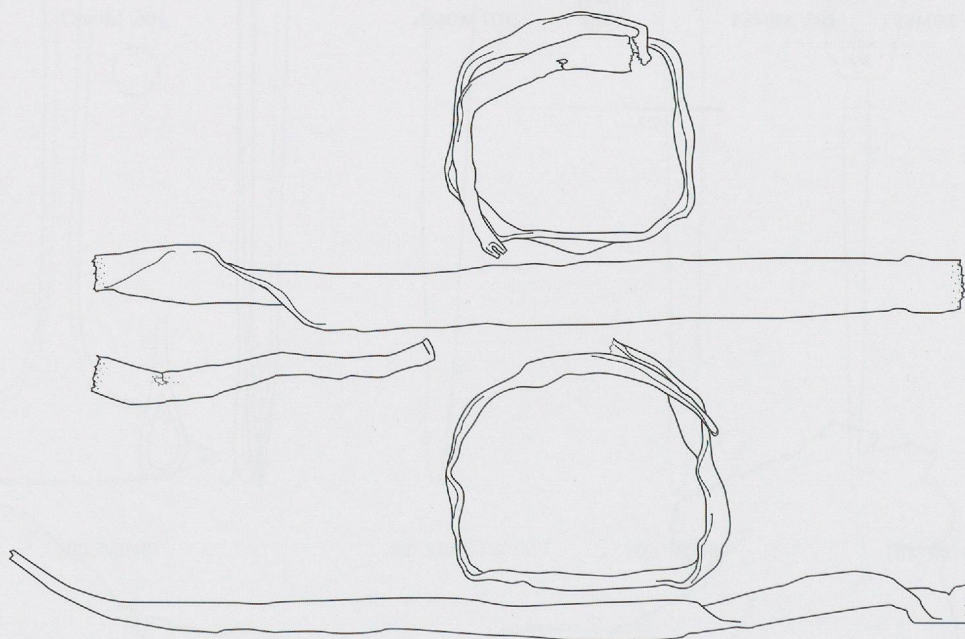
Pl. 29



110/ M0546b

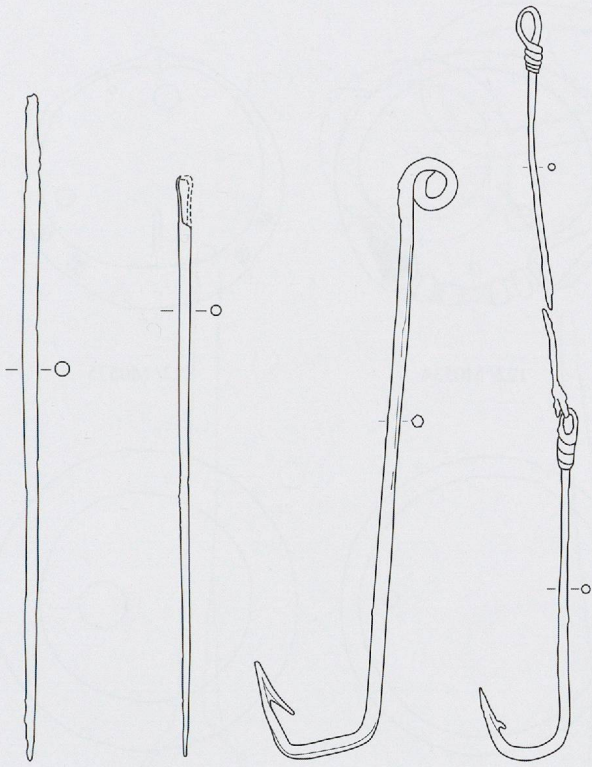


112/ M0547



111/ M0546c

1:2

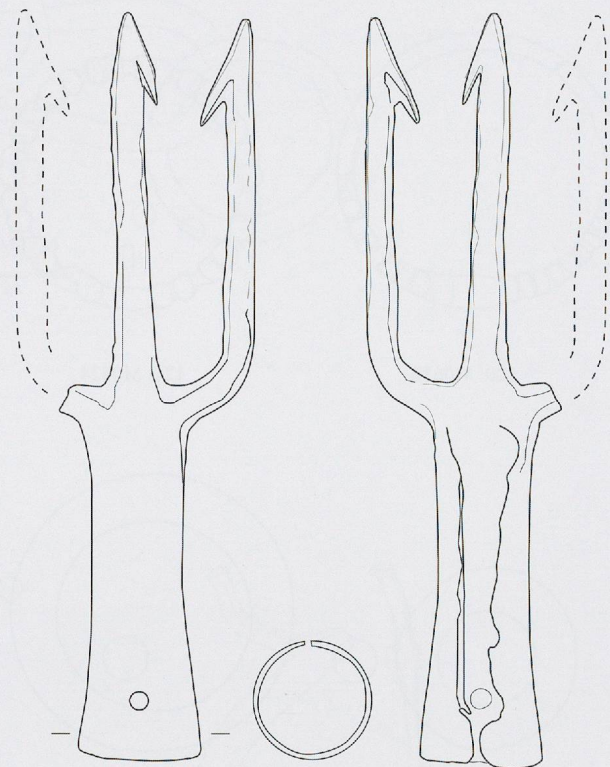


113/ M0543

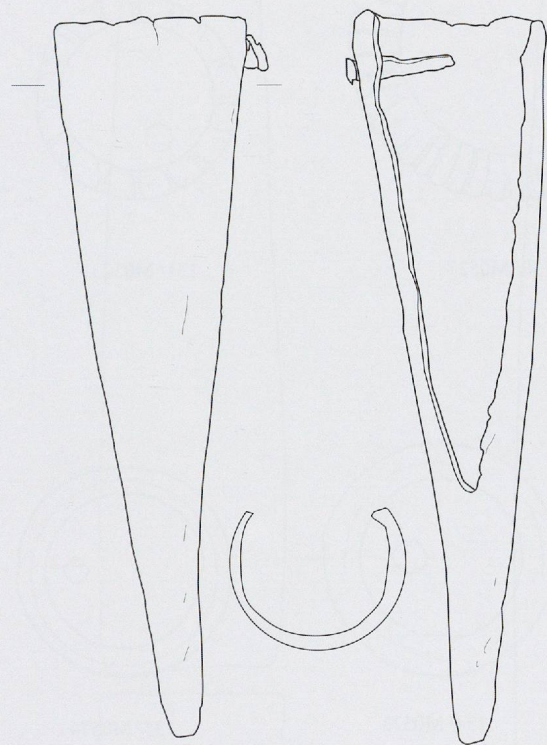
114/ M0544

115/ M0564

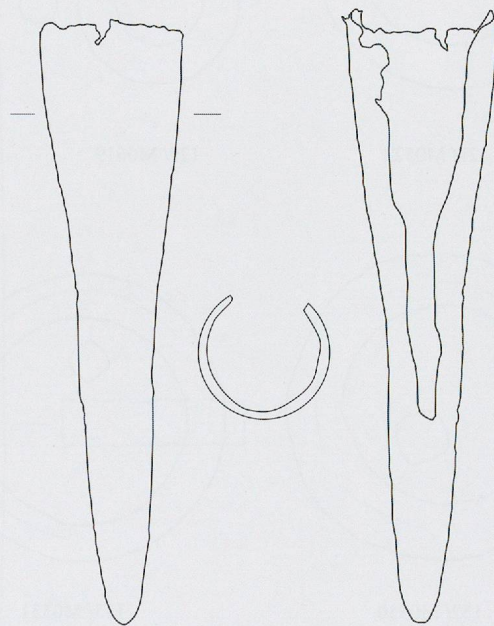
116/ M0565



117/ M0563



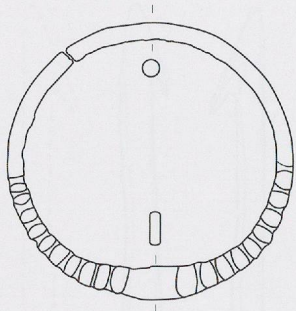
118/ M0509



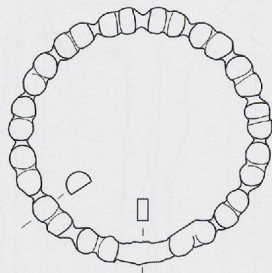
119/ M0624



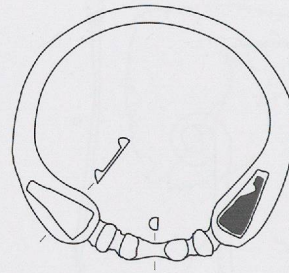
Pl. 31



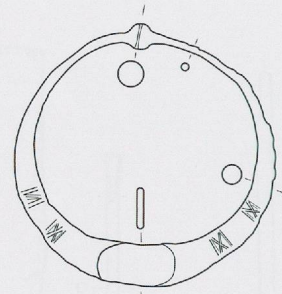
120/ M0618



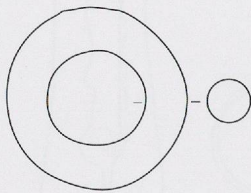
121/ M0524



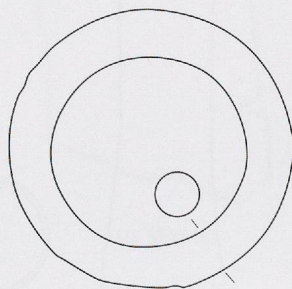
122/ M0534



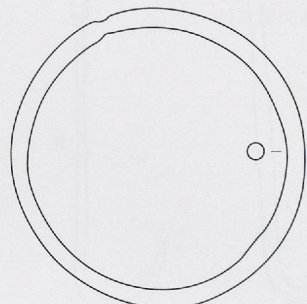
123/ M0575



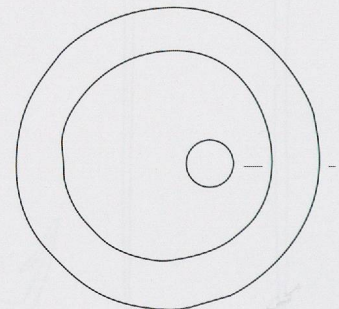
124/ M0528



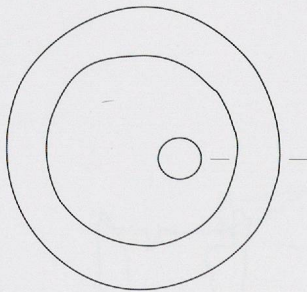
125/ M0529



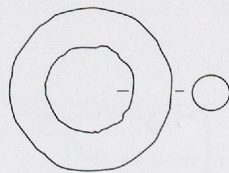
126/ M0532



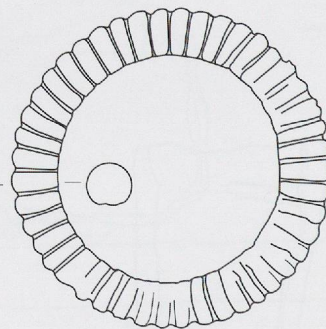
127/ M0571



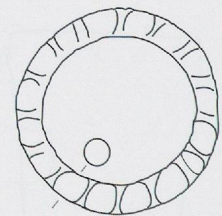
128/ M0572



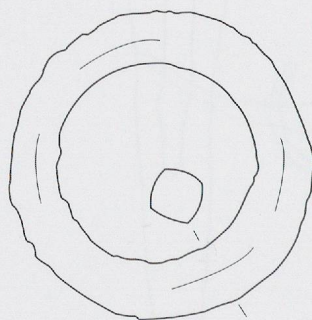
129/ M0619



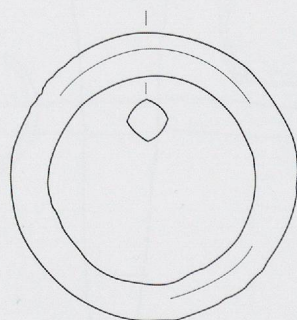
130/ M0527



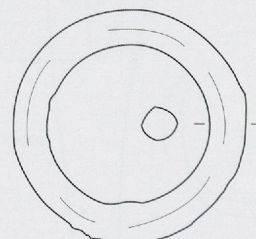
131/ M0523



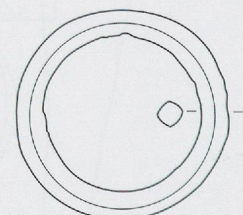
132/ M0530



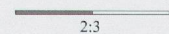
133/ M0531

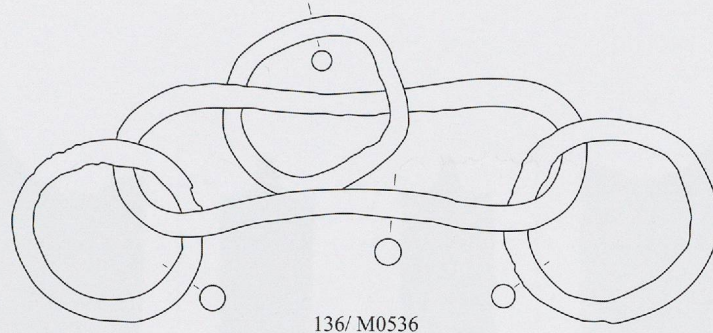


134/ M0573



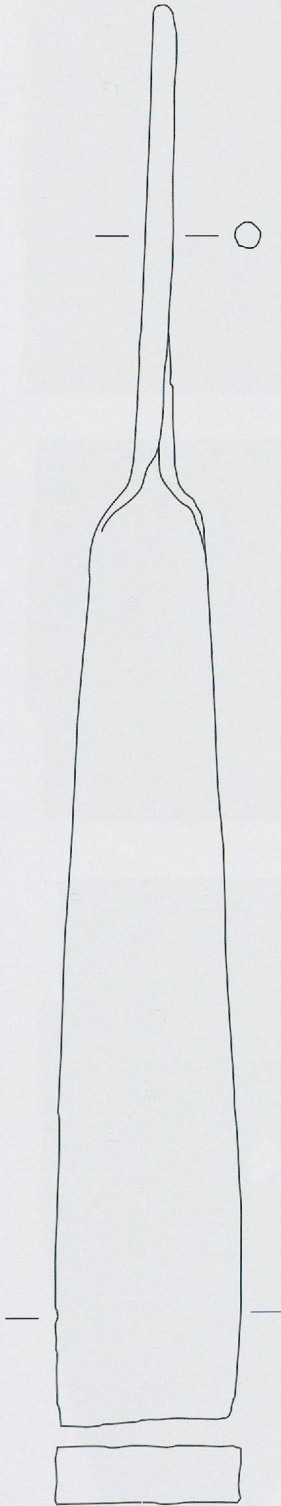
135/ M0574



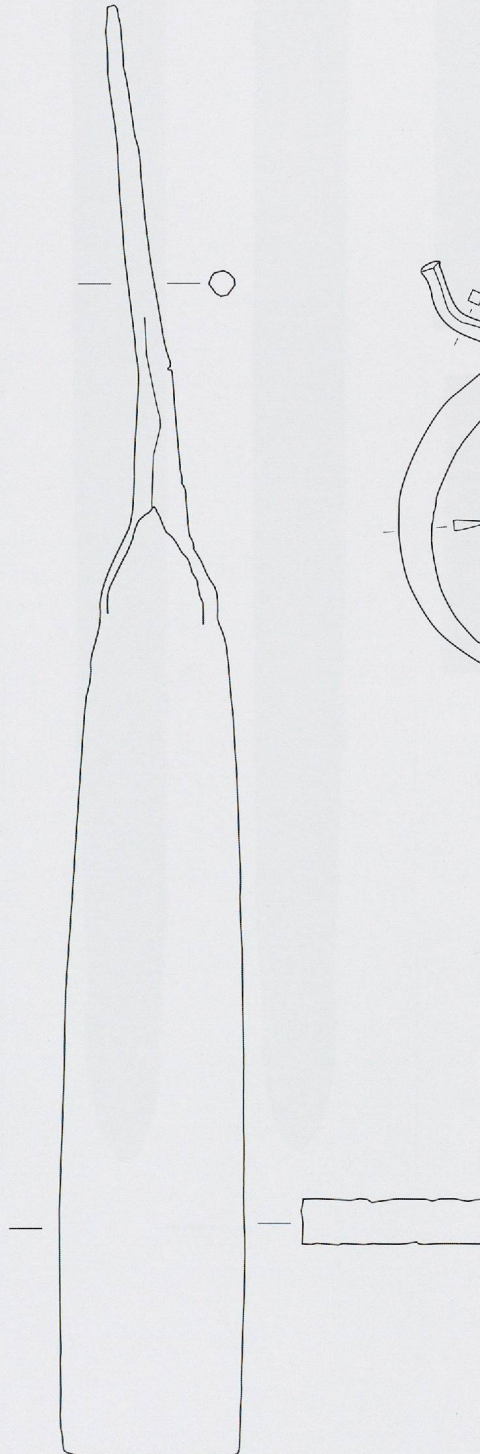


136/ M0536

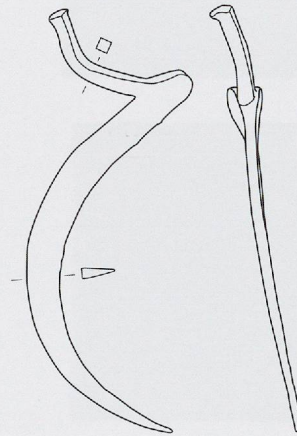
2:3



137/ M0468



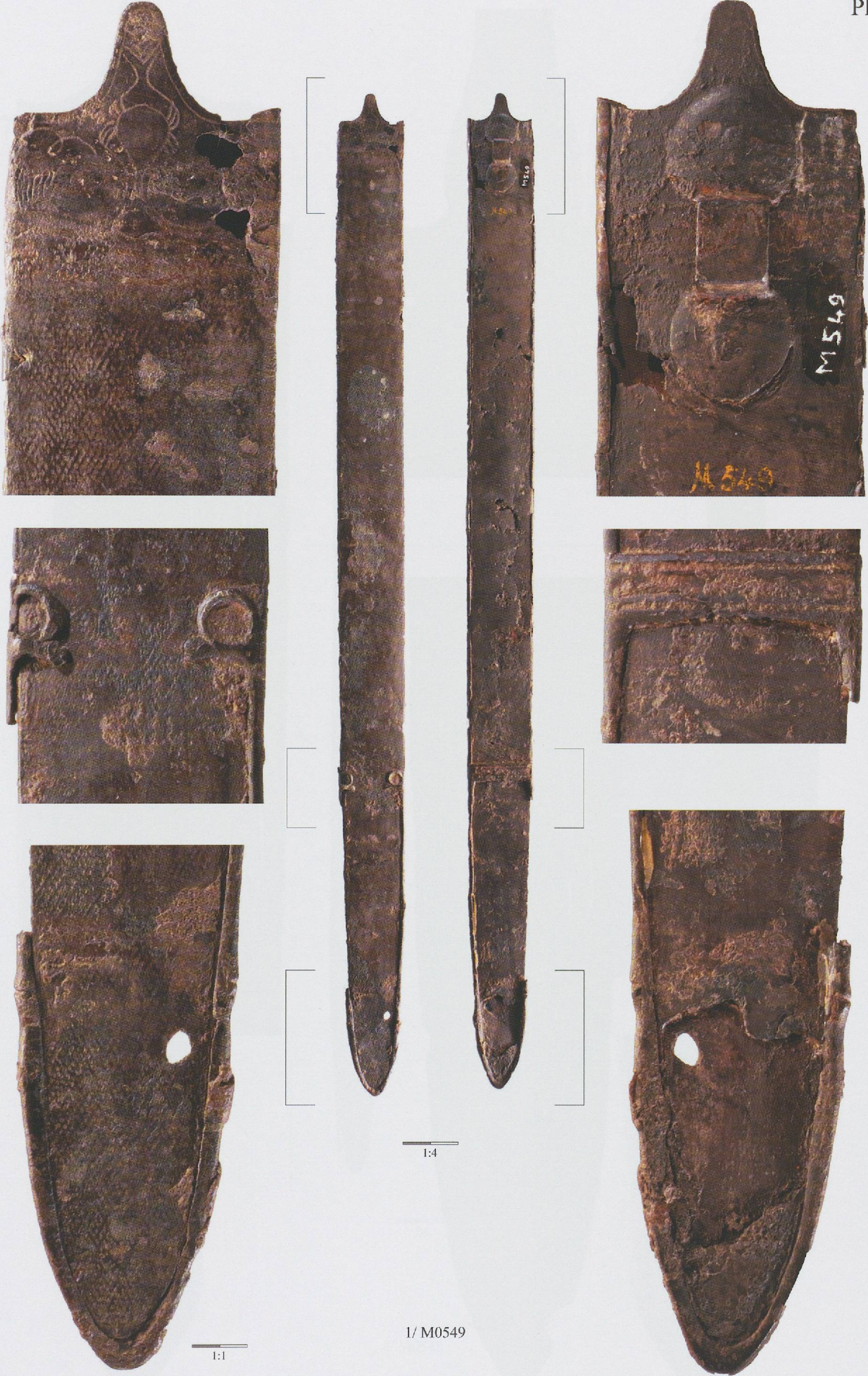
138/ M0469



139/ M0570

1:2

140/ M0542 : voir photo pl. 66 ; 141/ CdN2002-0592, (M0277) : voir photo pl. 67 ; 142/ CdN2002-0593, (M0626) : voir photo pl. 67 ; 143/ CdN2002-0594 (M0627) : voir photo pl. 67 ; 144/ CdN2002-0595, (M0628) : voir photo pl. 67 ; 145/ CdN2002-0596, (M0629) : voir photo pl. 67



1:4

1/ M0549

1:1

Pl. 34



1/ M0549



2/ M0548

Pl. 36



1:1

2/ M0548

1:4



1/2

M464

M464

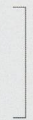
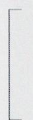
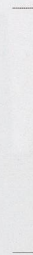
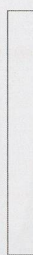
1:2

3/ M0464

1:4



Pl. 38



1:1

1:4

4/ M0550





4/ M0550

Pl. 40



5/ M0622



1:4

6/ M0622



7/ M0466

8/ M0465

Pl. 42



9/ M0551

1:1

10/ M0622

1:4



12/ M0577



13/ M0620



14/ M0576



15/ M0535



16/ M0525



17/ M0526



18/ M0533

2:3

Pl. 44



19/ M0517

20/ M0514

21/ M0553

22/ M0555



23/ M0554

24/ M0516

25/ M0515

Pl. 46



26/ M0519



27/ M0556



28/ M0557



29/ M0518

1:2



30/ M0539



31/ M0540



32/ M0559



33/ M0558



34/ M0520



1:2

35/ M0541



1:1



1:2

36/ M0583

Pl. 48



37/ M0522



38/ M0568

1:2



39/ M0521



40/ M0590



41/ M0588



42/ M0587



1:2



43/ M0589



Pl. 50



44/ M0592



45/ M0591



46/ M0579



47/ M0578



48/ M0582



Pl. 52



49/ M0581

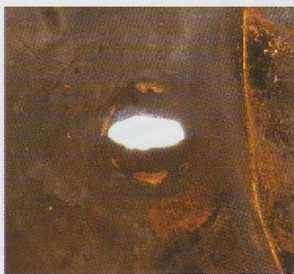


50/ M0580



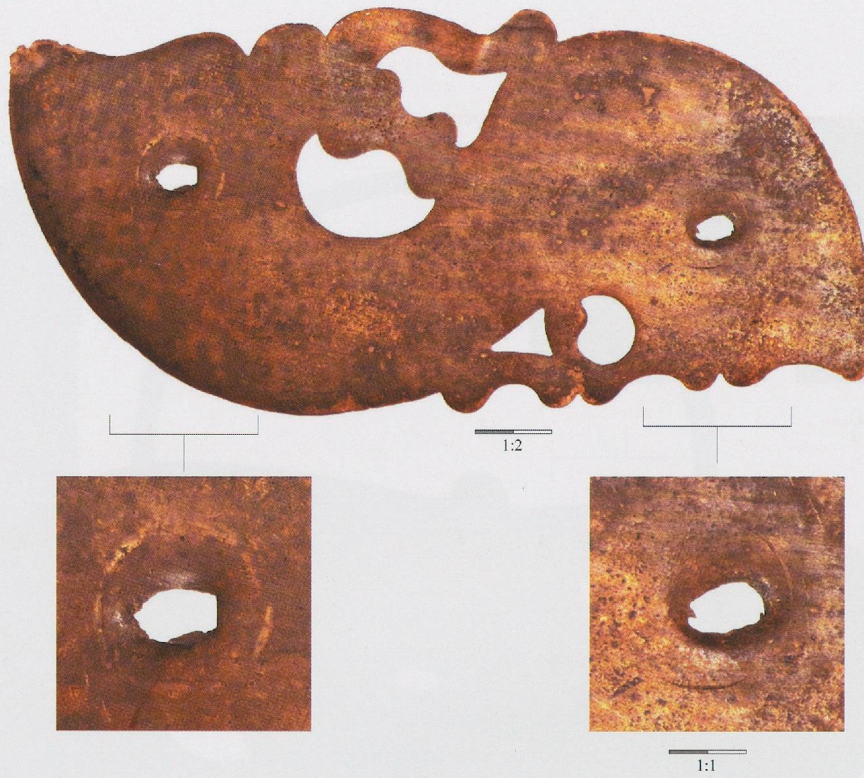
51/ M0569





52/ M0585

Pl. 54



53/ M0586(5bis)



54/ M0584



55/ M0506 (sans échelle)

55/ M0506 : © Musée d'art et d'histoire, Ville de Genève



56/ M0492



61/ M0504



57/ M0567



62/ M0496



58/ M0499



63/ M0500



59/ M0566



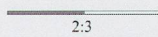
64/ M0617



60/ M0493



65/ M0498



Pl. 56



66/ M0491



67/ M0494



68/ M0502



69/ M0505



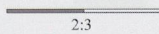
70/ M0495

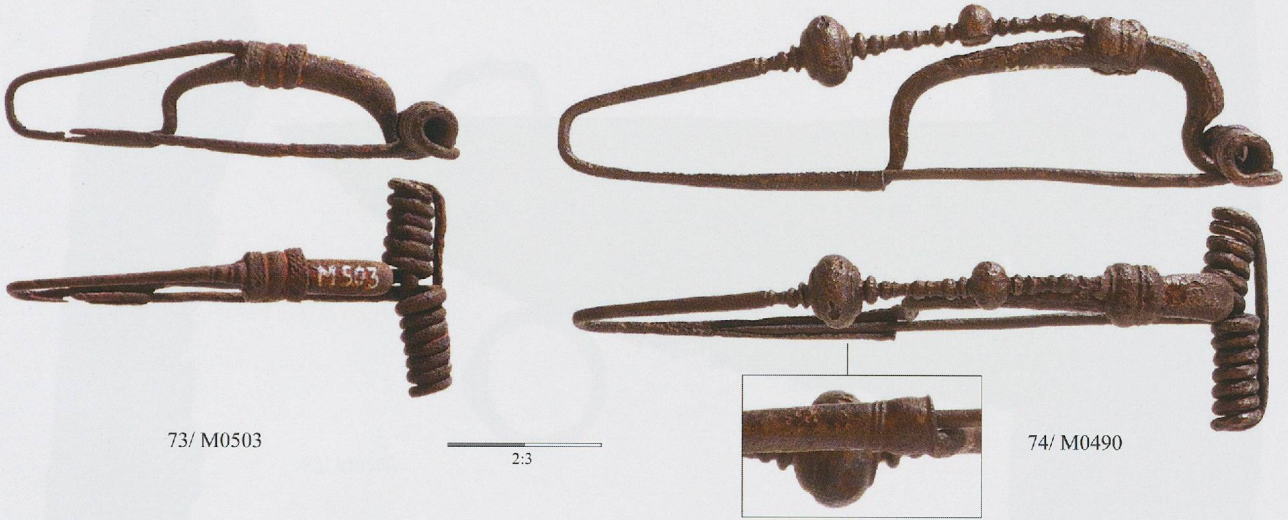


71/ M0501



72/ M0497





73/ M0503

2:3

74/ M0490



75/ M0537

2/3

76/ M0538

2:3



77/ M0507

1:2



78/ M0562

1:2

Pl. 58



79/ M0510



80/ M0511

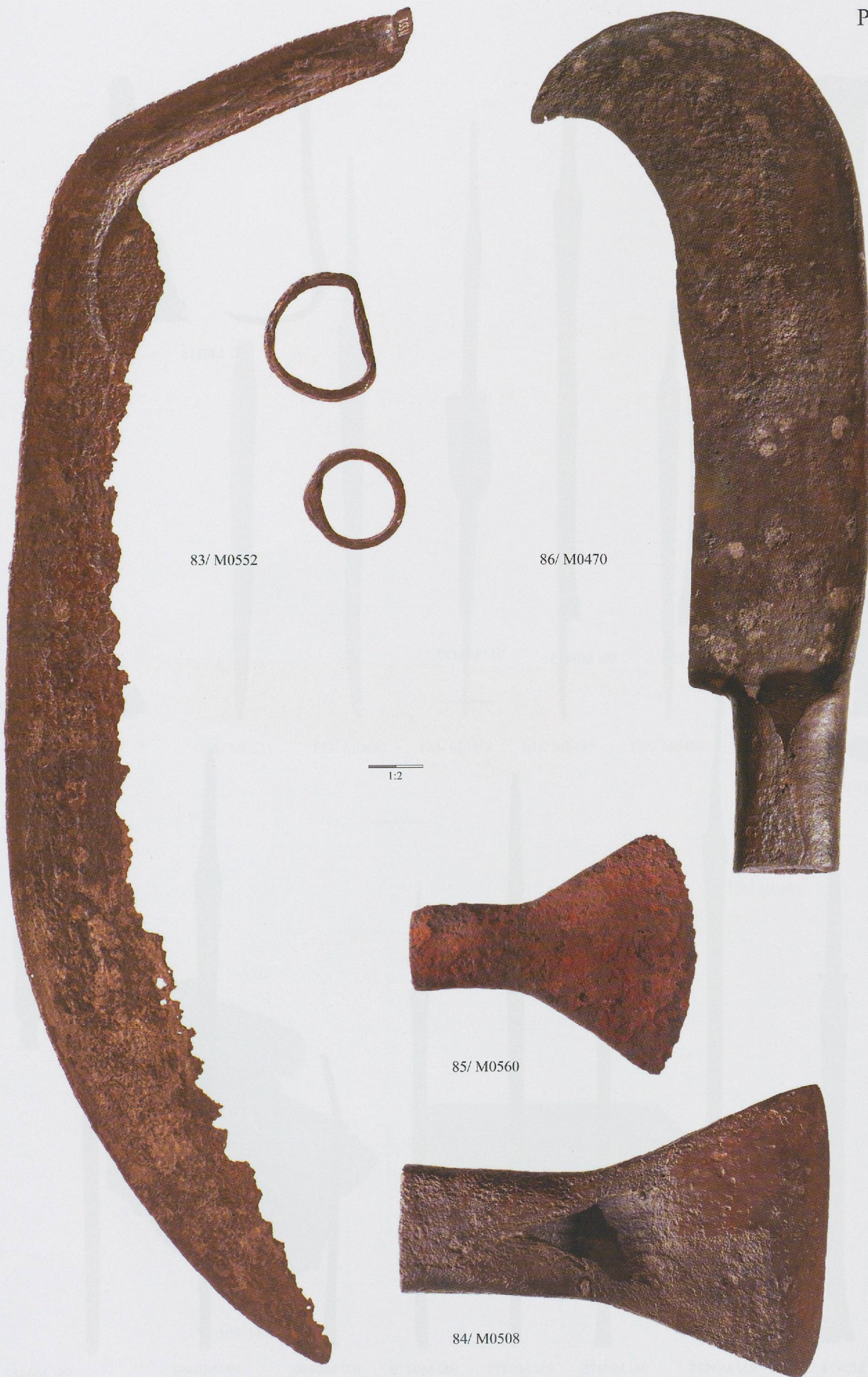


81/ M0512



82/ M0561





83/ M0552

86/ M0470

1:2

85/ M0560

84/ M0508

Pl. 60



88/ M0472



89/ M0471



90/ M0473



91/ M0477



87/ M0513

1:2



92/ M0474



93/ M0475



94/ M0476



95/ M0478



96/ M0479



97/ M0480



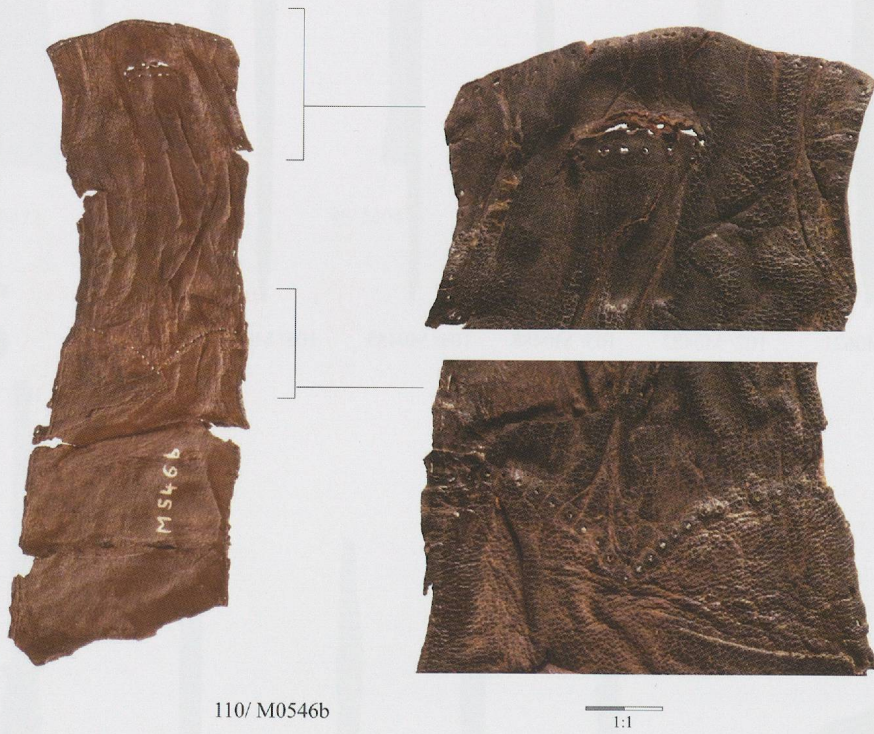
98/ M0482



99/ M0489



Pl. 62





112/ M0547



113/ M0543

114/ M0544

115/ M0564

116/ M0565

117/ M0563

Pl. 64



118/ M0509



119/ M0624

1:2



120/ M0618



121/ M0524

2:3



122/ M0534



123/ M0575



1:1



124/ M0528



125/ M0529



126/ M0532



127/ M0571



128/ M0572



129/ M0619



130/ M0527



131/ M0523



132/ M0530



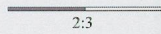
133/ M0531



134/ M0573



135/ M0574



136/ M0536

Pl. 66



137/ M0468

1:2

138/ M0469



1:2

139/ M0570



M542
140/ M0542
(sans échelle)



141/ CdN2002-0592 (M0277)



142/ CdN2002-0593 (M0626)



143/ CdN2002-0594 (M0627)



144/ CdN2002-0595 (M0628)



145/ CdN2002-0596 (M0629)

Pl. 68

Ind. 3 (999 N)



Ind. 4 (1000 N)



Ind. 5 (1001 N)



Ind. 6 (1002 N)



Ind. 7 (1003 N)



Pl. 70

Ind. 8 (1004 N)



Ind. 9 (1005 N)



Ind. 10 (1005 N A)



MAR-LT-18952



Le fragment MAR-LT-18952, conservé au Laténium, colle au fragment 1005 N A.

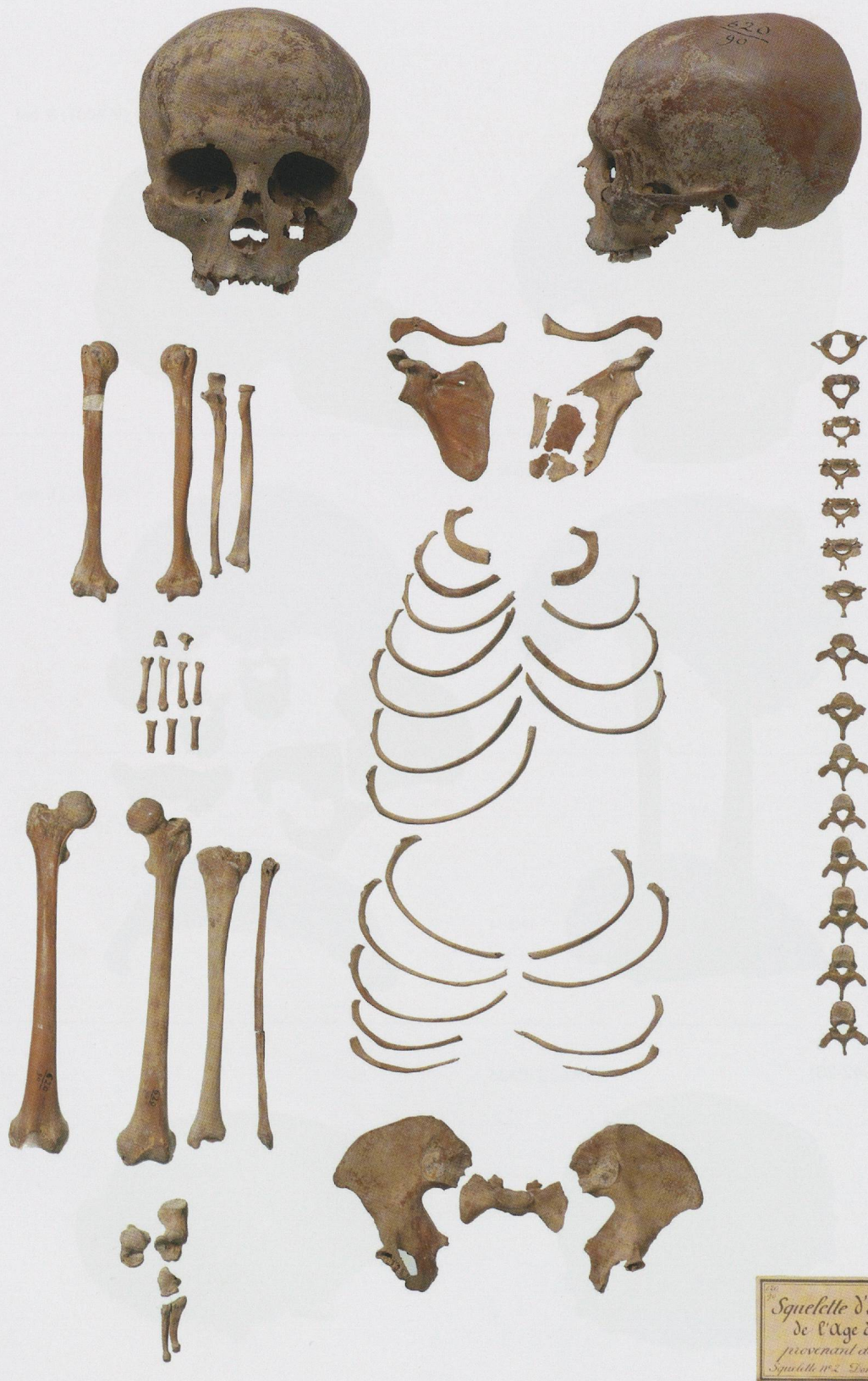
Ind. 11 (1006 N/ 1942-54)



Ind. 12 (1942-26)



Pl. 72



Ind. n°13 (620-90)



Ind. n°14 (620-91)

Pl. 74

Ind. 15 (620-92)



UNIGE-1942-85, fémurs

Fe-S-1



Fe-S-2



Fe-S-3



Fe-S-4

UNIGE-1942-85, fémurs



Fe-S-5



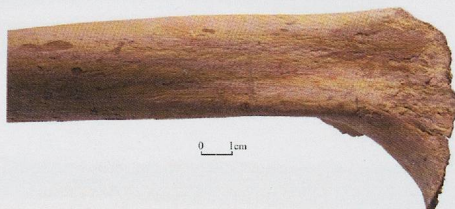
0 1cm



Fe-D-1



Fe-D-2



0 1cm



Fe-D-3



Fe-D-4



0 1cm



Fe-D-5



0 1cm

Pl. 76

UNIGE-1942-85, humérus



Hu-S-1



0 1cm



Hu-S-2



Hu-S-3



0 1cm



Hu-S-4



Hu-S-5



Hu-D-1



Hu-D-2



0 1cm

UNIGE-1942-85, humérus et tibias



Hu-D-3



Hu-D-4



Ti-S-1



0 1cm



Ti-S-2



Ti-S-3



Ti-S-4



Ti-S-5



Ti-S-6



Ti-D-1



Ti-D-2



0 1cm



Ti-D-3



Ti-D-4



Ti moderne ?

Pl. 78

UNIGE-1942-85, fibulas et radius



Fi-S-1



Fi-S-2



Fi-S-3



Fi-D-1



Fi-D-2



Fi-D-3



0 1cm



Ra-S-1



Ra-S-2



Ra-S-3



0 1cm



Ra-D-1



0 1cm

UNIGE-1942-85, radius, ulnas, os coxal et côte



Ra-D-2



Ra-D-3



Ra-D-4



Ra-D-5



RA-D-6



UI-S-1



UI-D-1



UI-D-2 (?)



Cox-D-1



Costa-S