

Zeitschrift: Swiss review : the magazine for the Swiss abroad
Band: 42 (2015)
Heft: 6

Rubrik: Images : a portrait of work

Nutzungsbedingungen

Die ETH-Bibliothek ist die Anbieterin der digitalisierten Zeitschriften. Sie besitzt keine Urheberrechte an den Zeitschriften und ist nicht verantwortlich für deren Inhalte. Die Rechte liegen in der Regel bei den Herausgebern beziehungsweise den externen Rechteinhabern. [Siehe Rechtliche Hinweise.](#)

Conditions d'utilisation

L'ETH Library est le fournisseur des revues numérisées. Elle ne détient aucun droit d'auteur sur les revues et n'est pas responsable de leur contenu. En règle générale, les droits sont détenus par les éditeurs ou les détenteurs de droits externes. [Voir Informations légales.](#)

Terms of use

The ETH Library is the provider of the digitised journals. It does not own any copyrights to the journals and is not responsible for their content. The rights usually lie with the publishers or the external rights holders. [See Legal notice.](#)

Download PDF: 19.10.2024

ETH-Bibliothek Zürich, E-Periodica, <https://www.e-periodica.ch>

A portrait of work

Work is not the same today as it was 150 years ago. It is not just the activities that have changed; the social importance of work and the relationship between employers and employ-

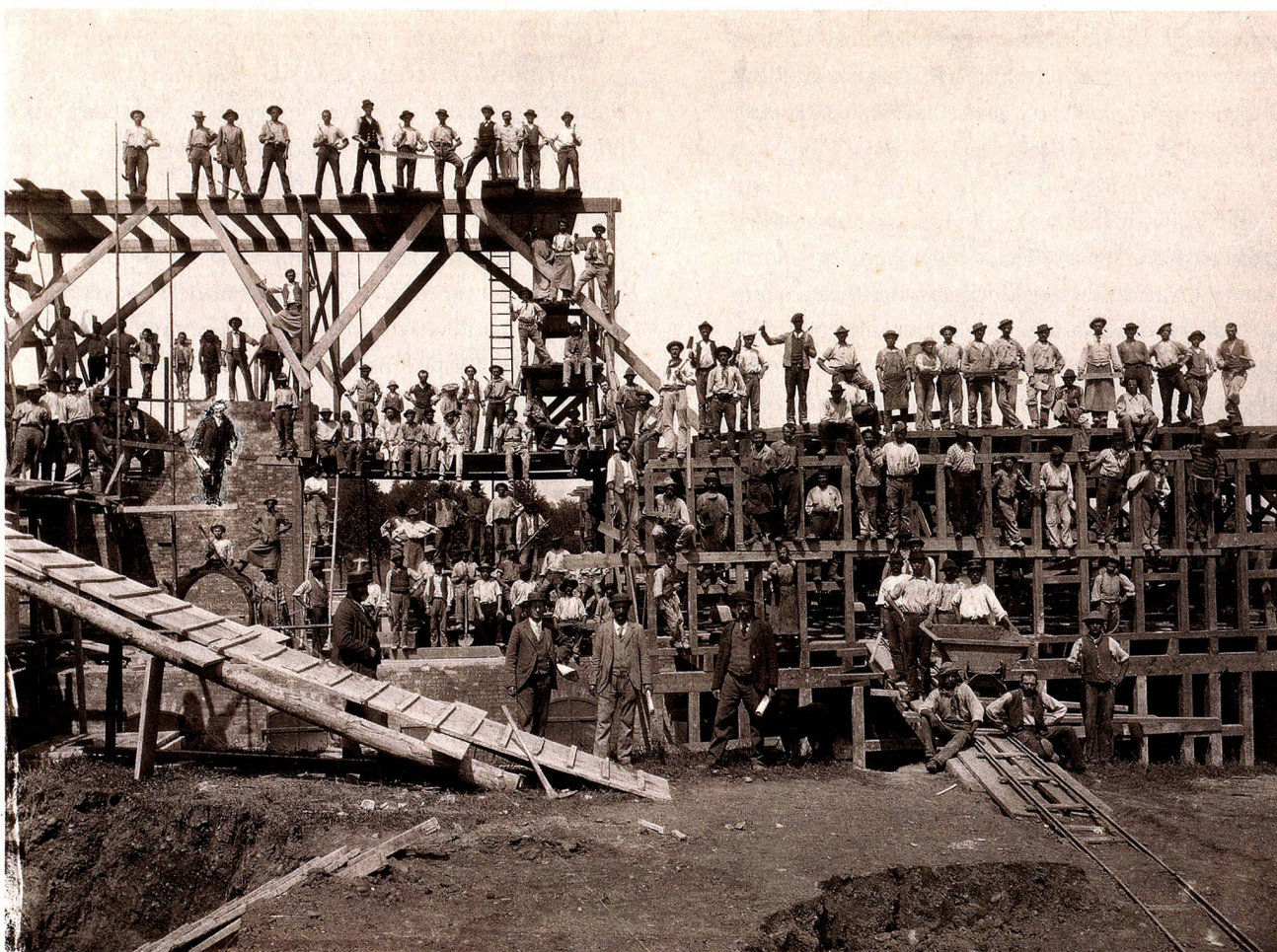
ees has also altered. Photographs of people at work taken between 1860 and 2015 are currently on show at the Swiss National Museum in Zurich. They impressively document the changes in the world of work and people's relationship with their jobs.



The workers at the Levy butcher's shop in Basel, taken between 1890 and 1910



Switzerland's first female shoemaker, taken in 1944 in Lachen



The mechanical brickworks in Allschwil, taken around 1898

The exhibition at the Swiss National Museum in Zurich runs until 31 January 2016.
 Limmat-Verlag has published a book on the exhibition entitled "Arbeit – le travail";
 224 pages containing various articles and 218 photographs; CHF 48, Euro 52.
www.limmatverlag.ch, www.nationalmuseum.ch



Welders, taken around 1940 in Frauenfeld



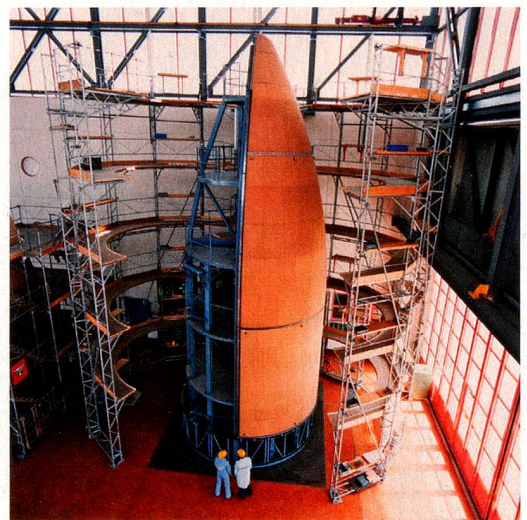
Seamstresses, taken around 1940



Traffic policeman in Zurich, taken around 1960



Director of the Swiss National Museum in Zurich with his secretary, taken around 1975



Rocket construction in Emmen, taken around 1992