

[Plates]

Objekttyp: **Appendix**

Zeitschrift: **Contributions to Natural History : Scientific Papers from the Natural History Museum Bern**

Band (Jahr): - **(2005)**

Heft 5

PDF erstellt am: **17.07.2024**

Nutzungsbedingungen

Die ETH-Bibliothek ist Anbieterin der digitalisierten Zeitschriften. Sie besitzt keine Urheberrechte an den Inhalten der Zeitschriften. Die Rechte liegen in der Regel bei den Herausgebern.

Die auf der Plattform e-periodica veröffentlichten Dokumente stehen für nicht-kommerzielle Zwecke in Lehre und Forschung sowie für die private Nutzung frei zur Verfügung. Einzelne Dateien oder Ausdrucke aus diesem Angebot können zusammen mit diesen Nutzungsbedingungen und den korrekten Herkunftsbezeichnungen weitergegeben werden.

Das Veröffentlichen von Bildern in Print- und Online-Publikationen ist nur mit vorheriger Genehmigung der Rechteinhaber erlaubt. Die systematische Speicherung von Teilen des elektronischen Angebots auf anderen Servern bedarf ebenfalls des schriftlichen Einverständnisses der Rechteinhaber.

Haftungsausschluss

Alle Angaben erfolgen ohne Gewähr für Vollständigkeit oder Richtigkeit. Es wird keine Haftung übernommen für Schäden durch die Verwendung von Informationen aus diesem Online-Angebot oder durch das Fehlen von Informationen. Dies gilt auch für Inhalte Dritter, die über dieses Angebot zugänglich sind.

Plate 1

Chitonidae I.

Figs. 1–4. *Chiton (Acanthopleura) blauneri* SHUTTLEWORTH, 1856. Holotype NMBE 19117, Puerto Rico, leg. Blauner 1853.

Fig. 1: Situs dorsal (L = 48.3 mm, scaled 2x).

Fig. 2: Detail of girdle with scales.

Fig. 3: Dorsal view on valve 1.

Fig. 4: Dorsal view on valve 8.

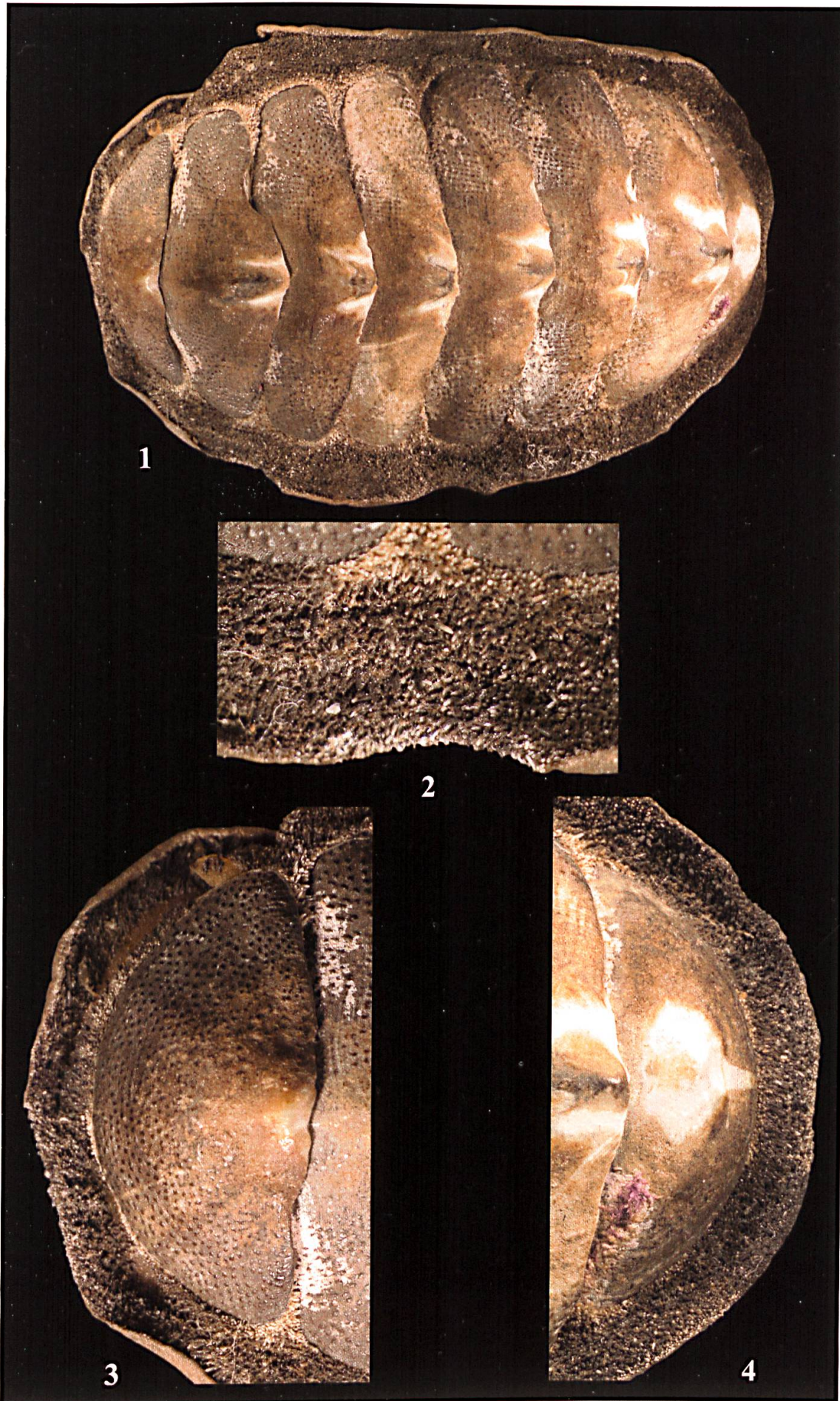


Plate 2

Chitonidae II.

Figs. 1–5. *Chiton (Lophurus) gemmulatus* SHUTTLEWORTH, 1853. Syntype NMBE 19120, USA, Virgin Islands “St. Thomas”, leg. Blauner 1852.

Fig. 1: Situs dorsal (L = 8.4 mm, scaled 11x).

Fig. 2: Dorsal view on valve 1.

Fig. 3: Detail of girdle with scales.

Fig. 4: Dorsal view on valve 8.

Fig. 5: Situs ventral (L = 8.4 mm, scaled 11x).

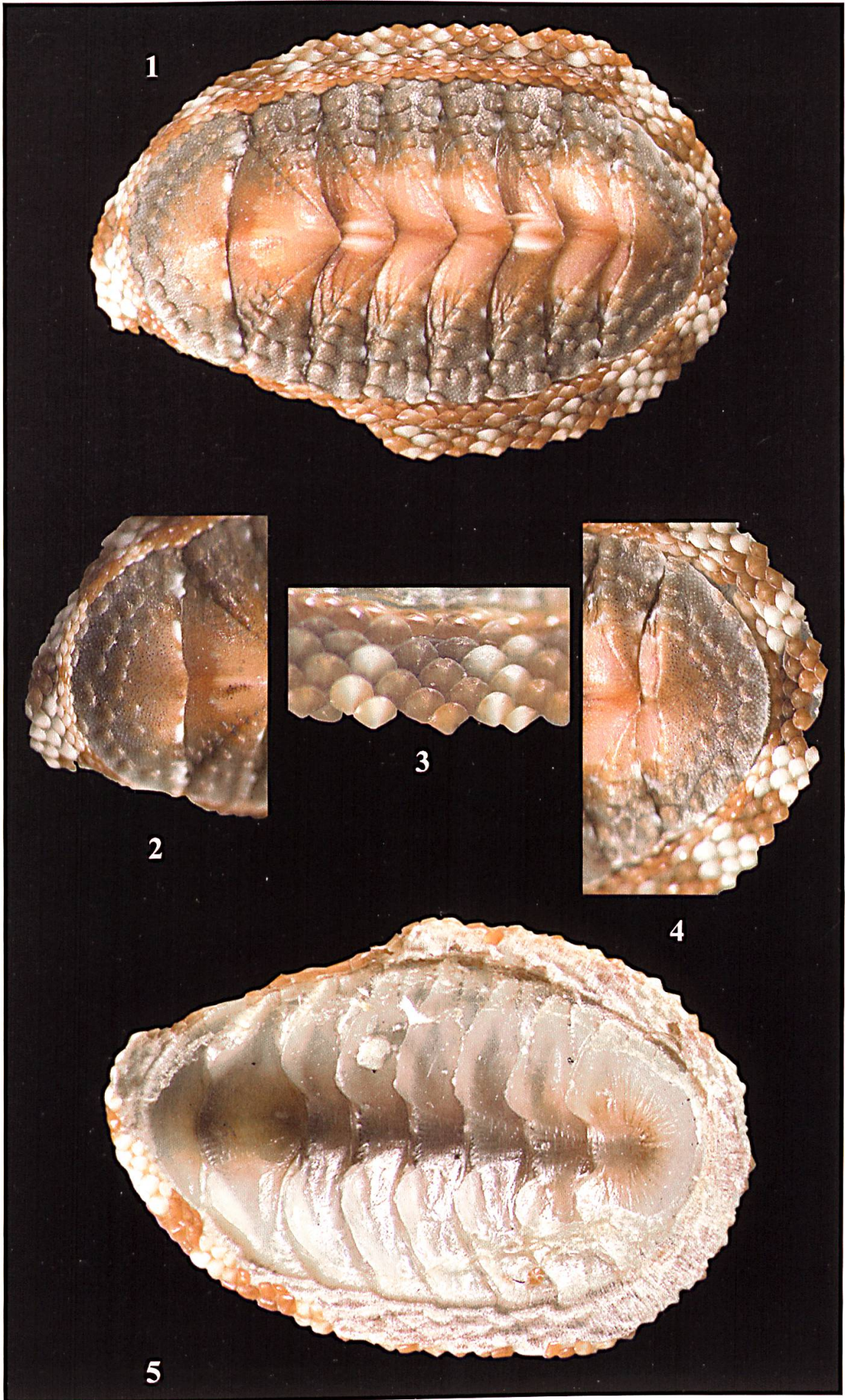


Plate 3

Chitonidae III.

Figs. 1–3. *Chiton (Tonicia) schrammi* SHUTTLEWORTH, 1856. Lectotype MNHN, paralectotype NMBE 19115, West Indies, Guadeloupe, ex Bernardi 1855.

Fig. 1: Lectotype MNHN (L = 29 mm, scaled 4x).

Fig. 2: Paralectotype NMBE 19115 (L = 26 mm, scaled 4x).

Fig. 3: Paralectotype NMBE 19115, detail of median valves with girdle.

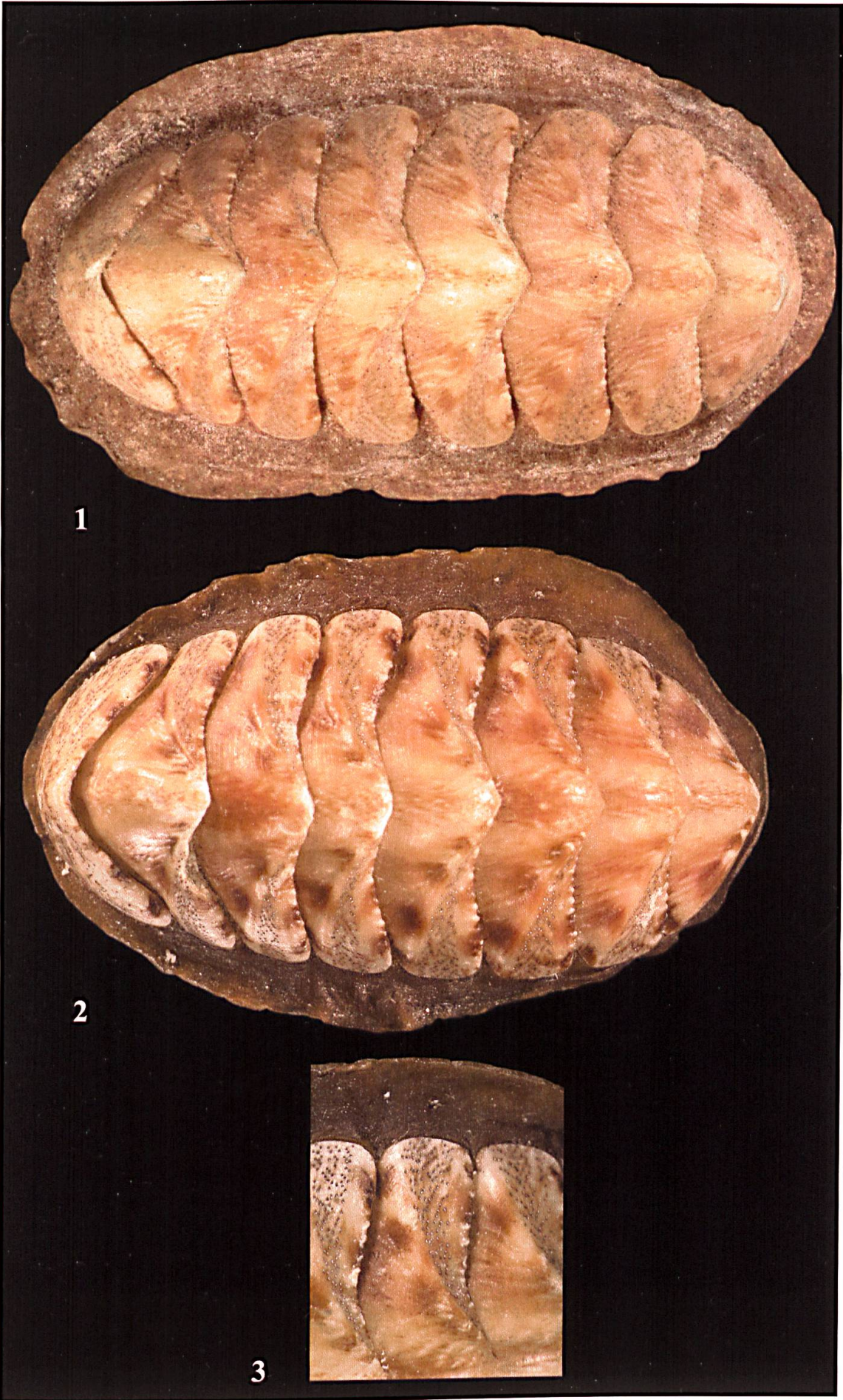


Plate 4

Chitonidae IV, Ischnochitonidae I.

Figs. 1–2. *Chiton (Tonicia) schrammi* SHUTTLEWORTH, 1856. Paralectotype NMBE 19115, West Indies, Guadeloupe, ex Bernardi 1855.

Fig. 1: Dorsal view on valve 1.

Fig. 2: Dorsal view on valve 8.

Figs. 3–6. *Chiton (Acanthopleura) piceolus* SHUTTLEWORTH, 1853. Syntype NMBE 19119, Canary Islands “Tenerife”, leg. Blauner 1850.

Fig. 3: Ventral view on disarticulated syntype specimen.

Fig. 4: Dorsal view on valve 1 (width = 2.8 mm).

Fig. 5: Dorsal view on valve 4 (width = 4.0 mm).

Fig. 6: Dorsal view on valve 8 (width = 2.6 mm).

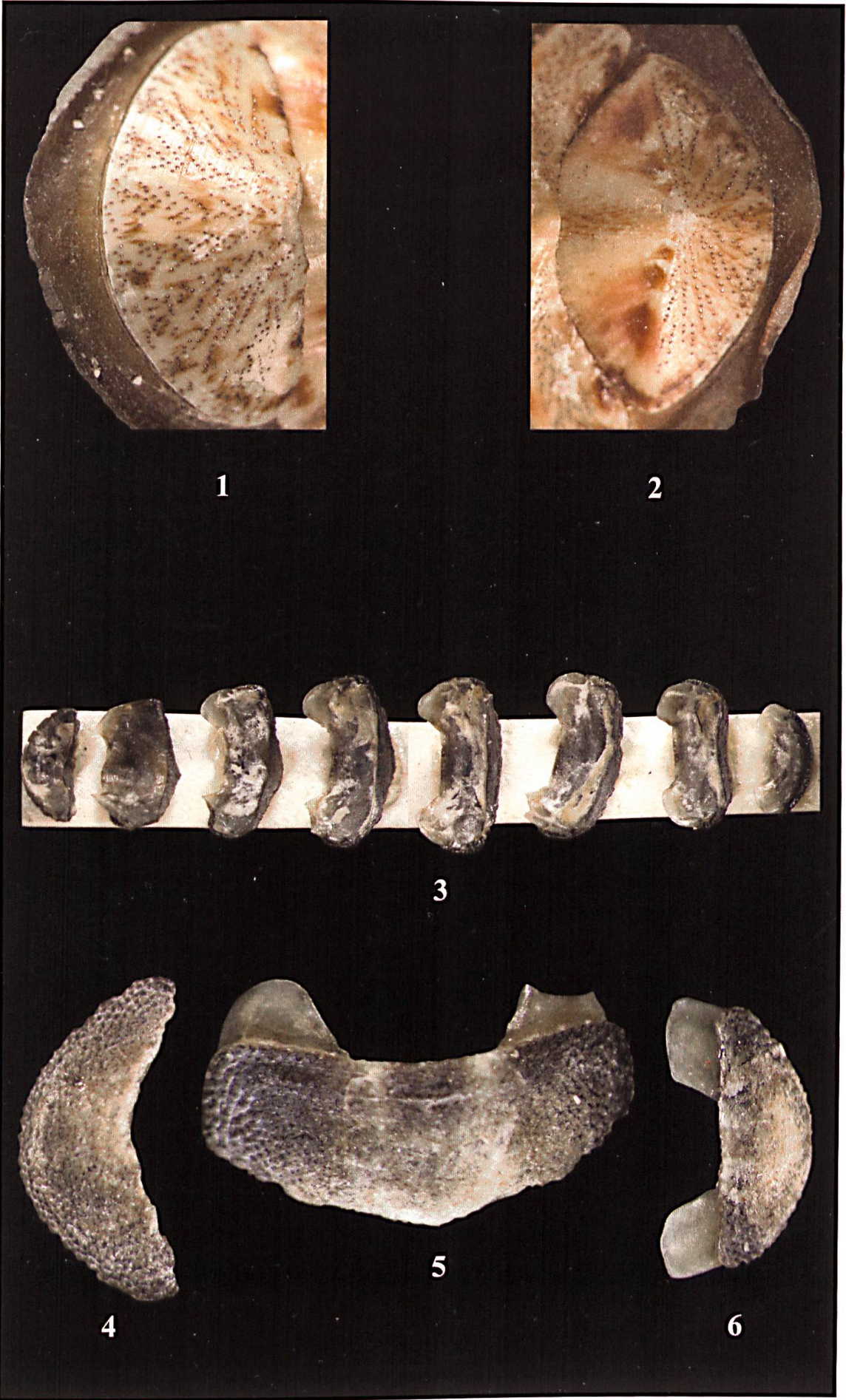


Plate 5

Ischnochitonidae II.

Figs. 1–5. *Chiton (Chaetopleura) asper* SHUTTLEWORTH, 1856. Syntype NMBE 19118, West Indies, Guadeloupe, ex Bernardi 1855.

Fig. 1: Situs dorsal (L = 10.5 mm, scaled 8x).

Fig. 2: Dorsal view on valve 1, 2.

Fig. 3: Dorsal view on valve 4, 5, 6.

Fig. 4: Dorsal view on valve 7, 8.

Fig. 5: Situs ventral (L = 10.5 mm, scaled 8x).

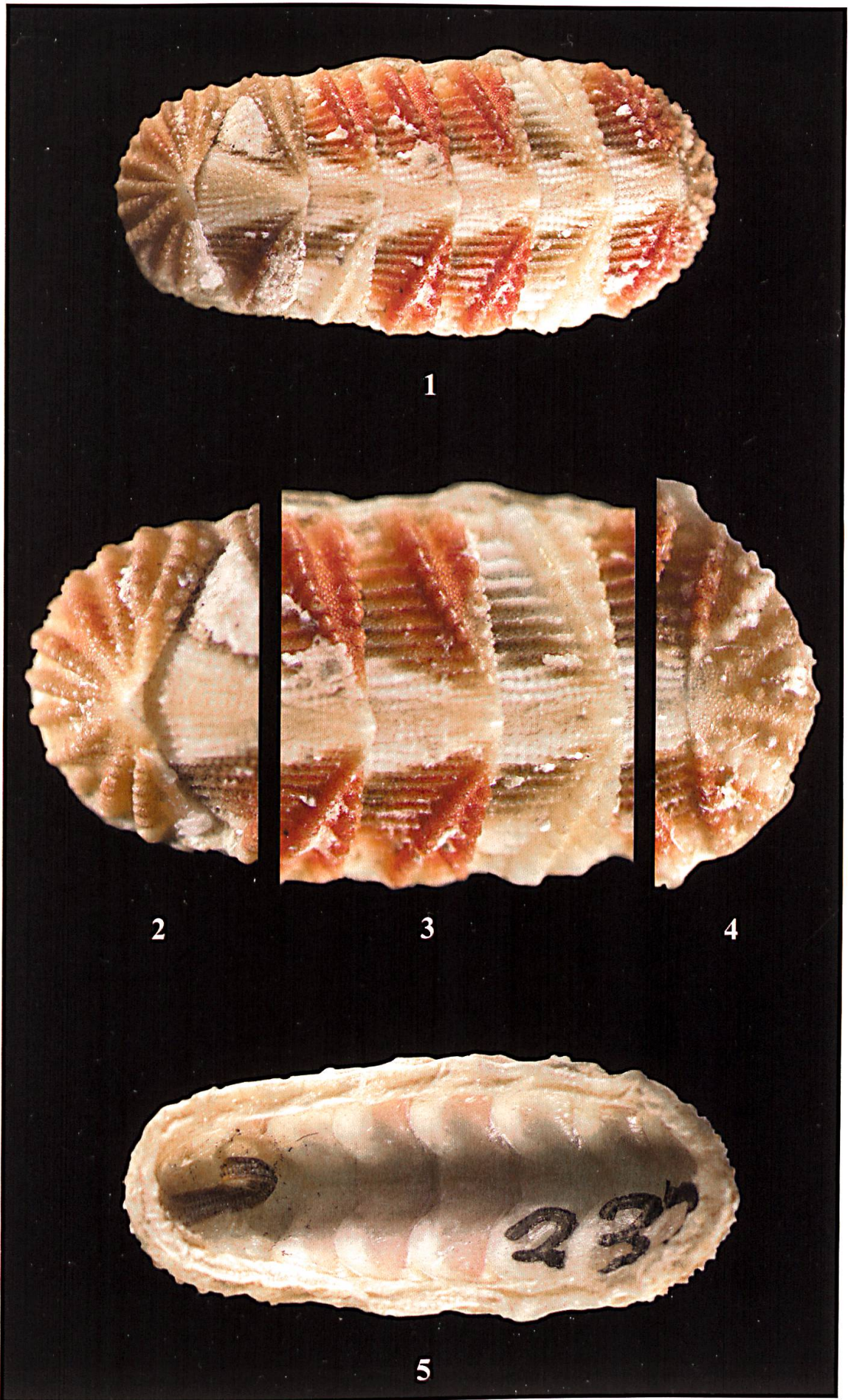


Plate 6

Hydrocenidae, Truncatellidae, Cyclophoridae.

- Fig. 1. *Hydrocaena gutta* SHUTTLEWORTH, 1852. Syntype NMBE 18974, Canary Islands “Teneriffa”, leg. Blauner 1851 (H = 2.9 mm, scaled 20x).
- Fig. 2. *Truncatella lowei* SHUTTLEWORTH, 1852. Syntype NMBE 19114, Canary Islands “ad oram maritimam insulae Teneriffae”, leg. Blauner (H = 5.7 mm, scaled 15x).
- Fig. 3. *Cyclostoma (Craspedopoma) costatum* SHUTTLEWORTH, 1852. Syntype NMBE 18977, Canary Islands “Palma”, leg. Blauner 1851 (H = 4.0 mm, scaled 15x).
- Fig. 4. *Cyclostoma (Cyclophorus vel Leptopoma) thersites* SHUTTLEWORTH, 1852. Syntype NMBE 19097, Philippines, ex Verreaux 1851 (H = 19.3 mm, scaled 2x).



Plate 7

Helicinidae I, all figures 4x.

Fig. 1. *Trochatella chrysostoma* L. PFEIFFER, 1852. NMBE 18817, Cuba, Punta Brava, leg. Rugel 1849 (H = 11.35 mm).

Fig. 2. *Trochatella opima* SHUTTLEWORTH, 1852. Syntype NMBE 15271, "Haiti", leg. Sallé ex Cuming 1852 (H = 10.1 mm).

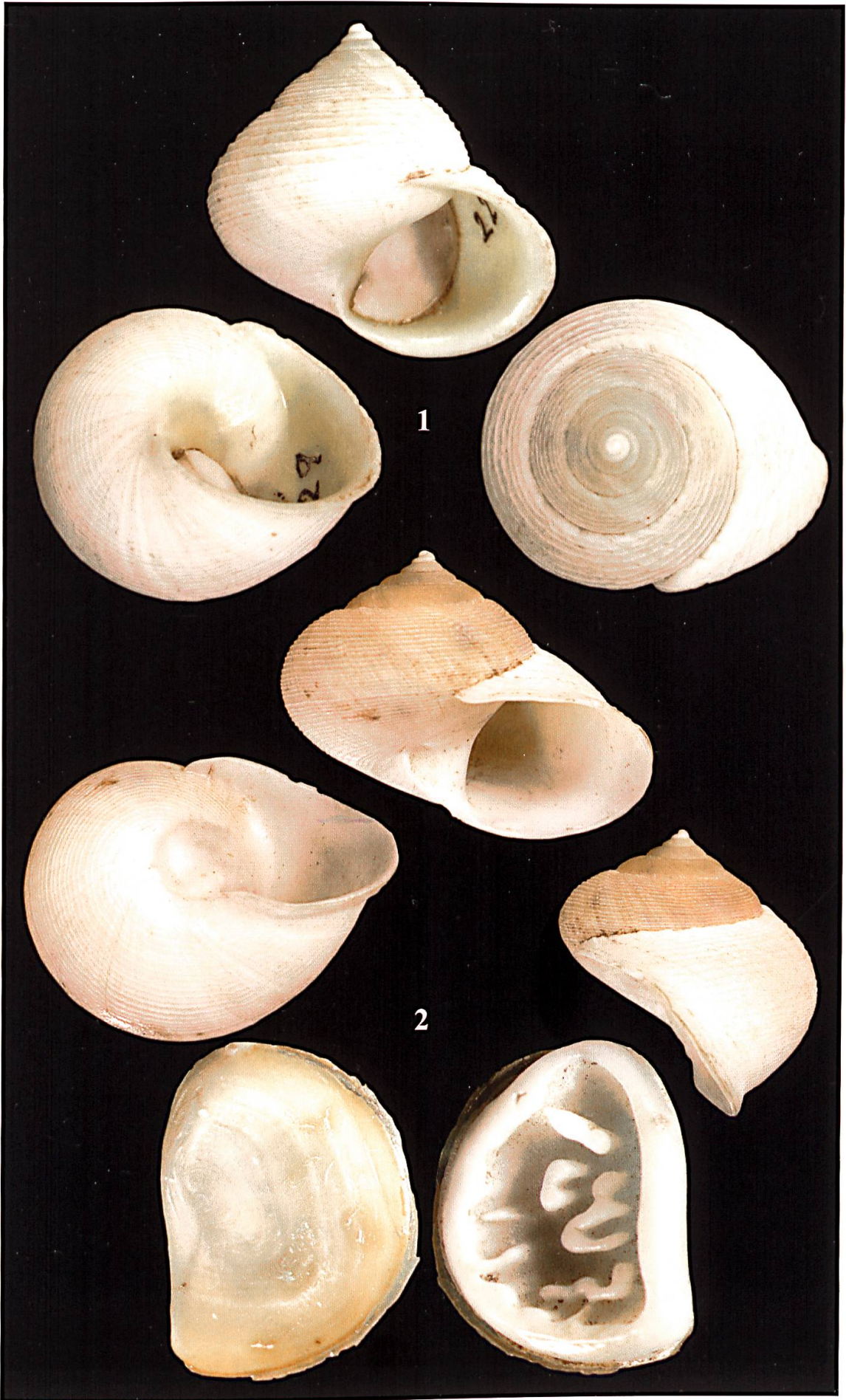


Plate 8

Helicinidae II, all figures 4x.

- Fig. 1. *Helicina chrysocheila* SHUTTLEWORTH, 1852. Holotype NMBE 15267, Mexico "Cordova, Vera Cruz", ex Jacot-Guillarmod (H = 8.05 mm).
- Fig. 2. *Helicina cinctella* SHUTTLEWORTH, 1852. Syntype NMBE 15275, Mexico "Cordova, Vera Cruz", ex Jacot-Guillarmod 1852 (H = 8.2 mm).
- Fig. 3. *Helicina delicatula* SHUTTLEWORTH, 1852. Holotype NMBE 19074, Mexico "Cordova, Vera Cruz", ex Jacot-Guillarmod (H = 5.88 mm).

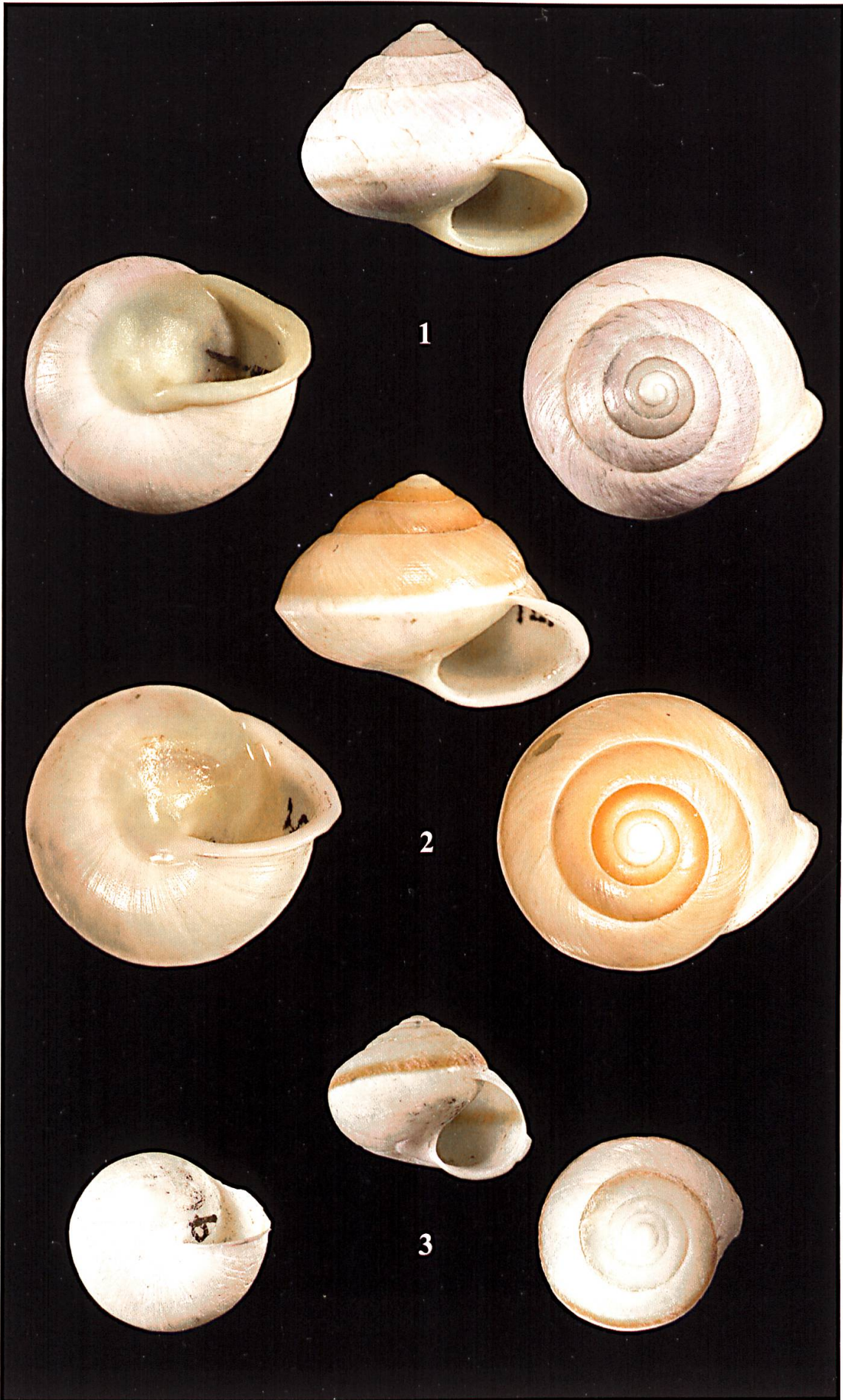


Plate 9

Helicinidae III.

- Fig. 1. *Helicina elata* SHUTTLEWORTH, 1852. Syntype NMBE 15269, Mexico “Cordova, Vera Cruz”, ex Jacot-Guillarmod (H = 4.0 mm, scaled 8x).
- Fig. 2. *Helicina sandozi* SHUTTLEWORTH, 1852. Syntype NMBE 15270, “Mexico”, leg. Sandoz ex Nicolet (H = 10.2 mm, scaled 4x).
- Fig. 3. *Helicina umbonata* SHUTTLEWORTH, 1854. “Syntype” NMBE 15272, Puerto Rico, leg. Knox 1853 (H = 3.55 mm, scaled 8x).

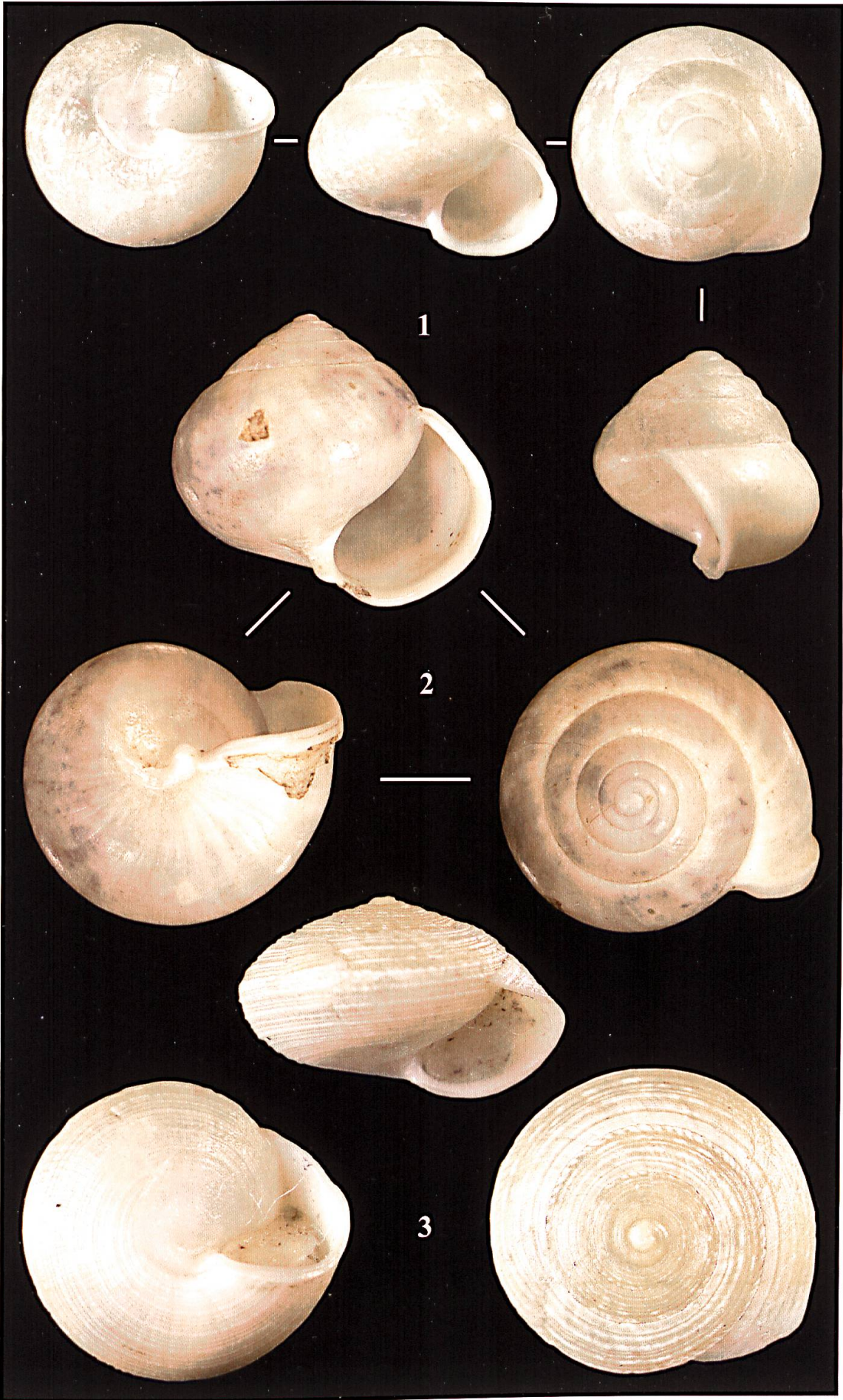


Plate 10

Helicinidae IV.

- Fig. 1. *Helicina vinosa* SHUTTLEWORTH, 1854. Syntype NMBE 18813, Puerto Rico "Rio Blanco" (H = 2.33 mm, scaled 12x).
- Fig. 2. *Schasicheila nicoleti* SHUTTLEWORTH, 1852. Syntype NMBE 15274, Mexico "Cordova, Vera Cruz", leg. Jacot-Guillarmod ex Nicolet (H = 12.2 mm, scaled 4x).

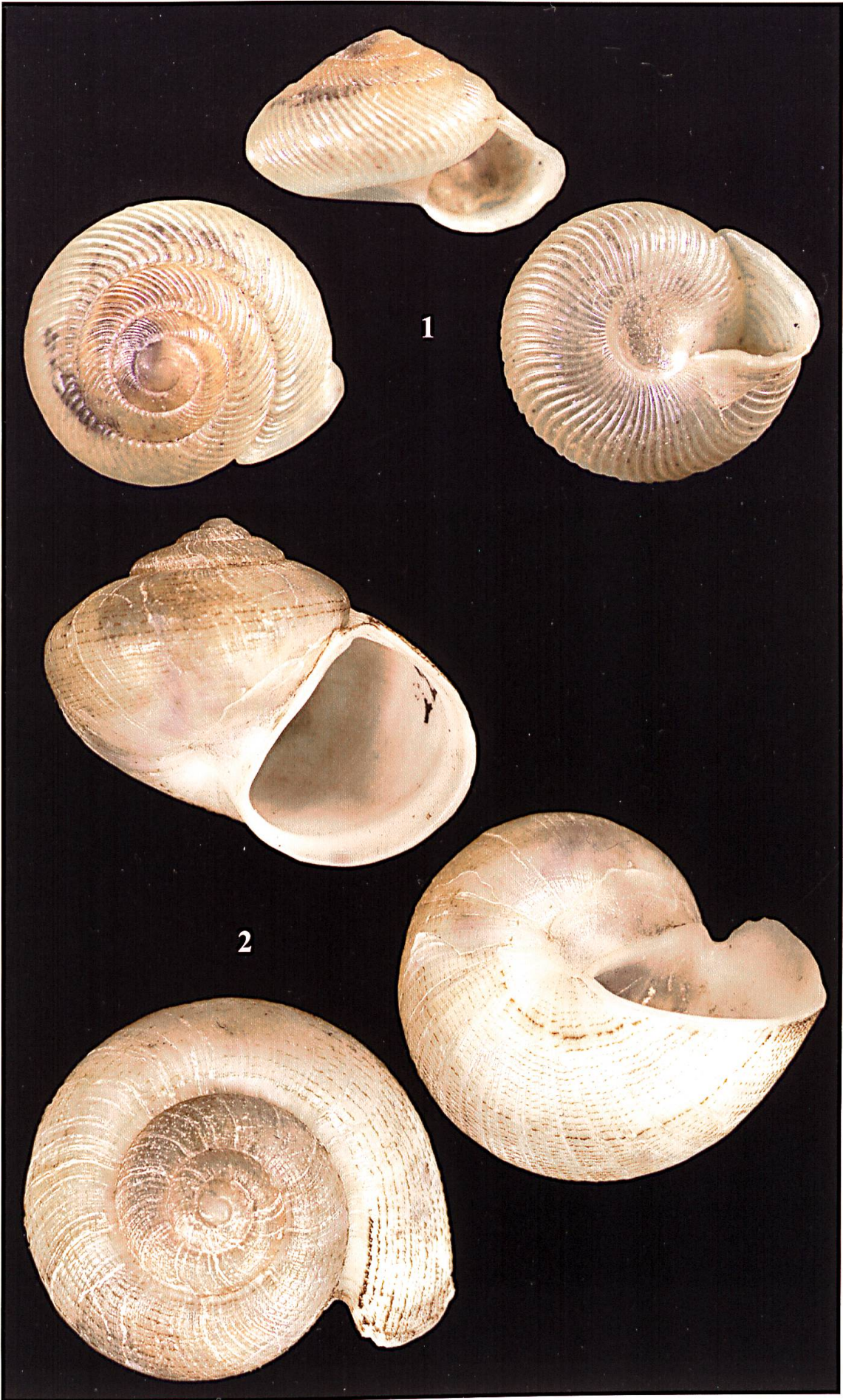


Plate 11

Megalomastomatidae, Fasciolariidae, Pleuroceridae.

- Fig. 1. *Cyclostoma (Megalomastoma) verruculosum* Shuttleworth, 1854. Syntype NMBE 19104, Puerto Rico “Sierra de Luquillo”, leg. Blauner 1853 (H = 16.5 mm, scaled 5x).
- Fig. 2. *Cyclostoma (Megalomastoma) croceum* var. *minor* SHUTTLEWORTH, 1854. Syntype NMBE 20737, Puerto Rico “sine localitate, Blauner 1853” (H = 21.0 mm, scaled 5x).
- Fig. 3. *Fusus hartvigii* SHUTTLEWORTH, 1856. Syntype NMBE 19094, USA, Virgin Islands “St. Thomas”, leg. Blauner 1853 (H = 30.1 mm, scaled 4x).
- Fig. 4. *Gyrotoma pyramidata* SHUTTLEWORTH, 1845. Syntype NMBE 19112, USA, Alabama “auf Felsen im Flusse Coosa bei Wetumpka”, leg. Rugel 1843 (H = 21.2 mm, scaled 3x).
- Fig. 5. *Gyrotoma ovoidea* SHUTTLEWORTH, 1845. Syntype NMBE 19111, USA, Alabama “auf Felsen im Flusse Coosa bei Wetumpka”, leg. Rugel 1843 (H = 18.32 mm, scaled 3x).



Plate 12

Neocyclotidae I, all figures 4x.

Figs. 1a–c. *Cyclostoma (Cyclotus) floccosum* SHUTTLEWORTH, 1857. Syntype NMBE 19100, “Haiti”, ex Cuming 1852 (D = 9.98 mm).

Fig. 1a: Syntype specimen in three different views.

Fig. 1b: Operculum, outer surface (diameter of nucleus without fringe 3.1 mm).

Fig. 1c: Operculum, inner surface (diameter of nucleus without fringe 3.1 mm).

Fig. 2. *Cyclostoma (Cyclophorus) schrammi* SHUTTLEWORTH, 1857. Syntype NMBE 19095, French Antilles “Guadeloupe”, ex Petit 1854/1855 (D = 11.82 mm).

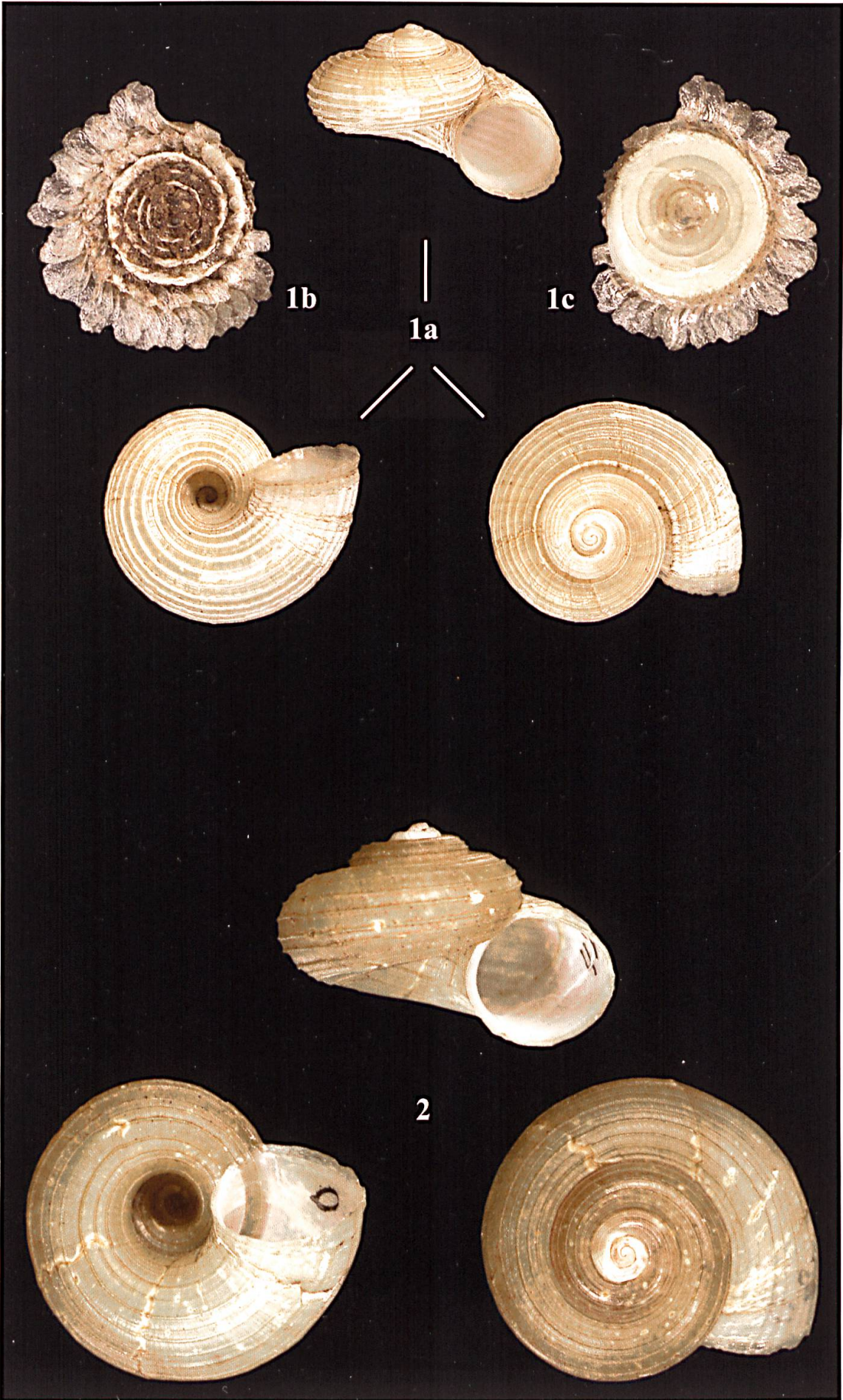


Plate 13

Neocyclotidae II, all figures 3x.

- Fig. 1. *Cyclostoma (Cyclotus) martinicense* SHUTTLEWORTH, 1857. Syntype NMBE 19099, French Antilles “Ins. Martinique”, ex Petit 1854 (D = 14.29 mm).
- Fig. 2. *Cyclostoma (Cyclophorus) cayennense* SHUTTLEWORTH, 1852. Syntype NMBE 19096, French Guyana “Cayenne”, ex Verreaux (D = 21.69 mm).

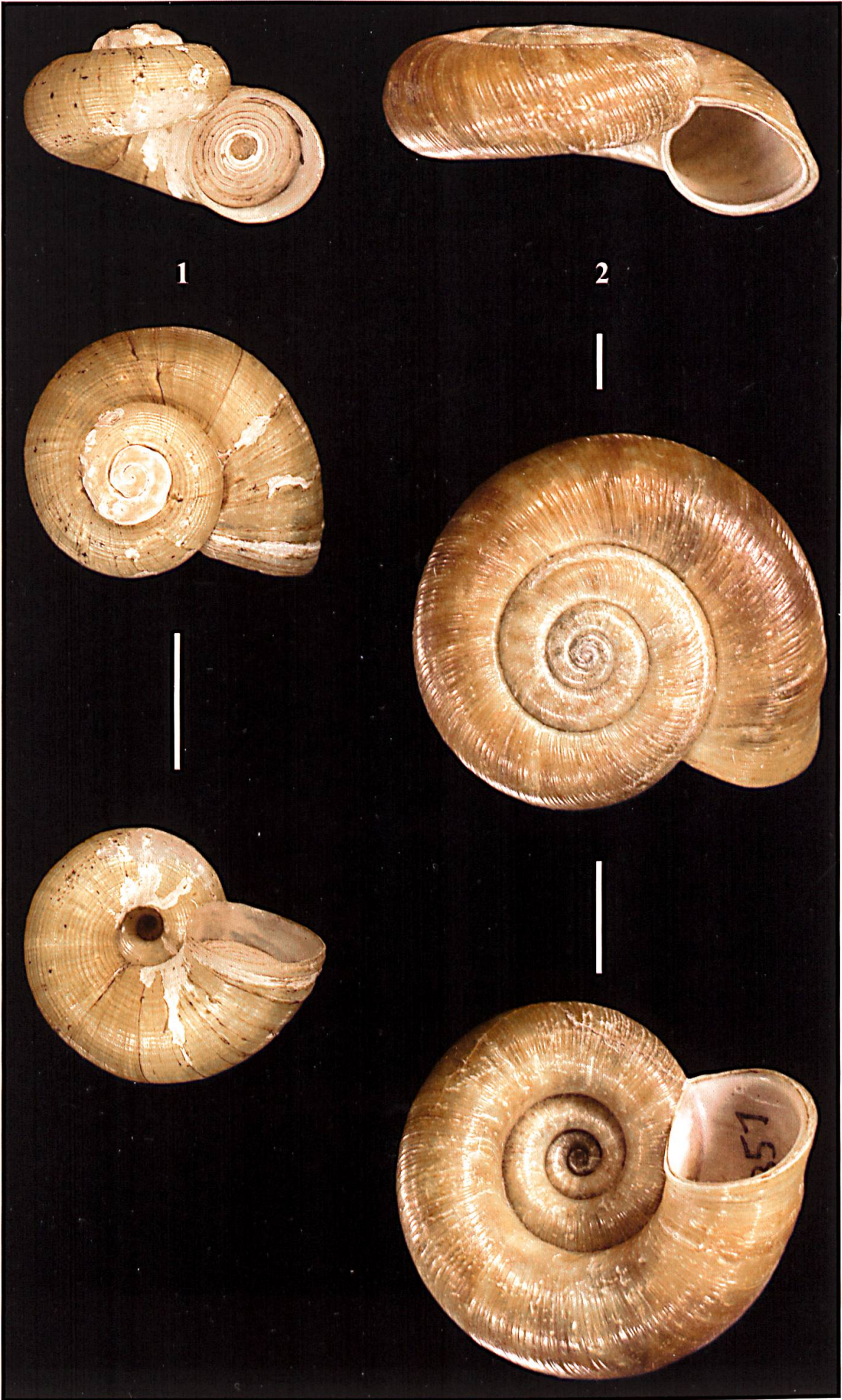


Plate 14

Neocyclotidae III, Annulariidae I.

Fig. 1. *Cyclostoma (Cyclotus) granadense* SHUTTLEWORTH, 1857. Holotype NMBE 19098, West Indies, "Insul. Granada", leg. Newcomb ex Bland 1856 (D = 15.69 mm, scaled 3x).

Fig. 2. *Cyclostoma (Chondropoma) blauneri* SHUTTLEWORTH, 1854. Syntype NMBE 18847, Puerto Rico "prope Humacao", leg. Blauner 1853 (H = 18.5 mm, scaled 4x).

Fig. 3. Annulariidae gen. sp. 1, NMBE 18849b (H = 14.85 mm, scaled 4x).

Fig. 4. Annulariidae gen. sp. 2, NMBE 18849c (H = 13.5 mm, scaled 4x).



Plate 15

Annulariidae II, all figures 5x.

- Fig. 1. *Cyclostoma (Chondropoma) swiftii* SHUTTLEWORTH, 1854. Syntype NMBE 19109, Puerto Rico "Ponce", leg. Swift ex Bland 1853 (H = 18.2 mm).
- Fig. 2. *Cyclostoma (Chondropoma?) newtoni* SHUTTLEWORTH, 1854. Syntype NMBE 19110, Puerto Rico "Arecibo", leg. Newton ex Bland 1853 (H = 13.9 mm).
- Fig. 3. *Cyclostoma (Choanopoma) senticosum* SHUTTLEWORTH, 1854. Syntype 19107, Puerto Rico "prope Luquillo", leg. Blauner 1853 (H = 16.0 mm).



Plate 16

Carditidae.

Figs. 1a–f. *Cardita conradi* SHUTTLEWORTH, 1856. Syntype NMBE 501773, USA, Florida, Tampa Bay, leg. Ruge 1847 (L = 27.55 mm, H = 18.05 mm.)

1a, b: External view of valves. 1a: left valve; 1b: right valve.

1c, d: Internal view of valves. 1c: left valve; 1d: right valve.

1e, f: View of hinge area. 1e: left valve; 1f: right valve.

Figs. 2a–f. *Cardita gracilis* SHUTTLEWORTH, 1856. Syntype NMBE 501774, Puerto Rico, leg. Blauner 1853 (L = 30.91 mm, H = 14.5 mm).

2a, b: External view of valves. 2a: left valve; 2b: right valve.

2c, d: Internal view of valves. 2c: left valve; 2d: right valve.

2e, f: View of hinge area. 2e: left valve; 2f: right valve.

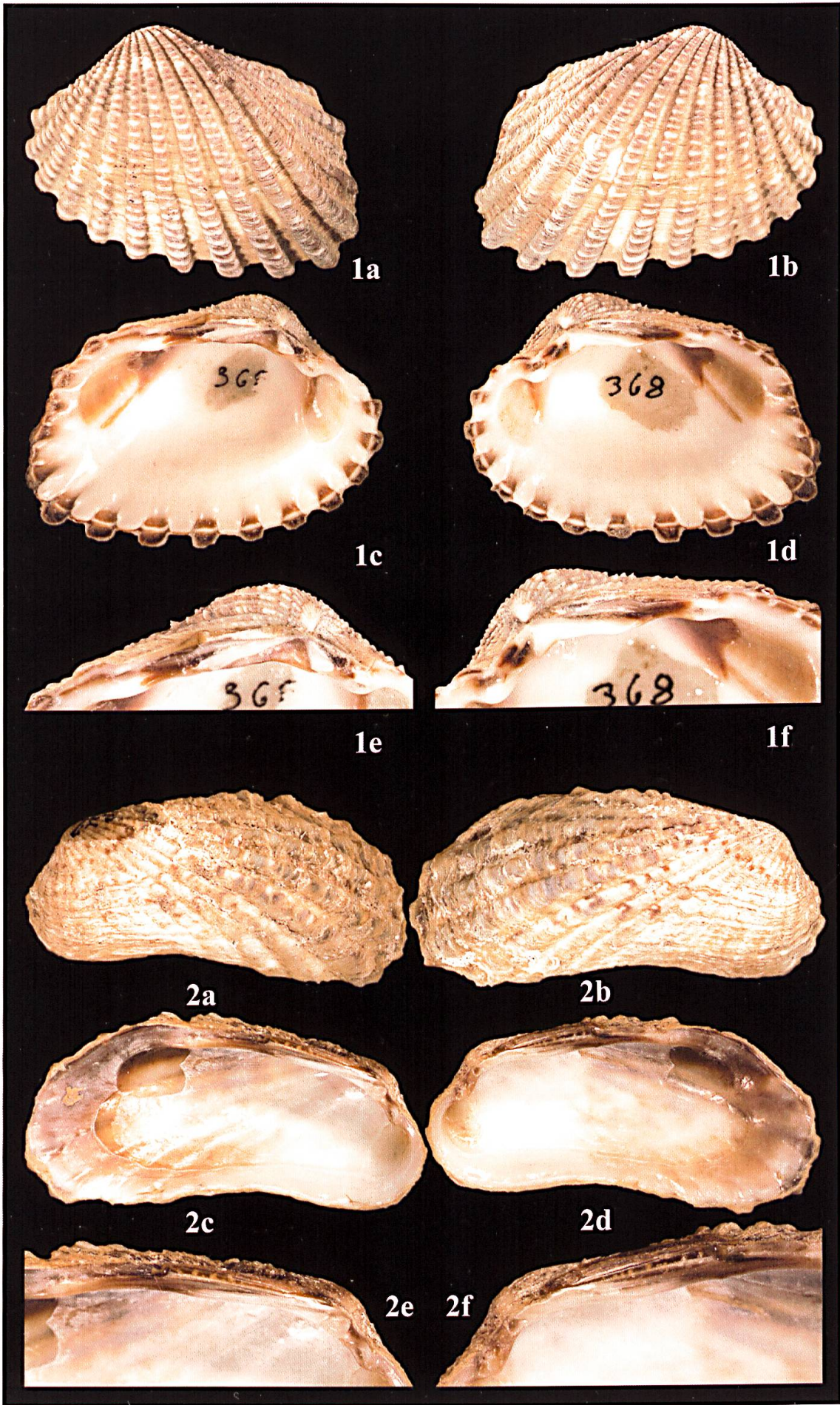


Plate 17

Donacidae, Cardiidae.

Figs. 1a–f. *Iphigenia media* SHUTTLEWORTH, 1856. Syntype NMBE 501776, Puerto Rico, leg. Blauner 1853 (L = 65.77 mm, H = 43.35 mm).

- 1a, b: External view of valves. 1a: left valve; 1b: right valve.
- 1c, d: Internal view of valves. 1c: left valve; 1d: right valve.
- 1e, f: View of hinge area. 1e: left valve; 1f: right valve.

Figs. 2a–f. *Cardium egmontianum* SHUTTLEWORTH, 1856. Syntype NMBE 501775, USA, Florida, Tampa Bay, Egmont Keys, leg. Rugel (L = 39.2 mm, H = 48.55 mm).

- 2a, b: External view of valves. 2a: left valve; 2b: right valve.
- 2c, d: Internal view of valves. 2c: left valve; 2d: right valve.
- 2e, f: View of hinge area. 2e: left valve; 2f: right valve.

12

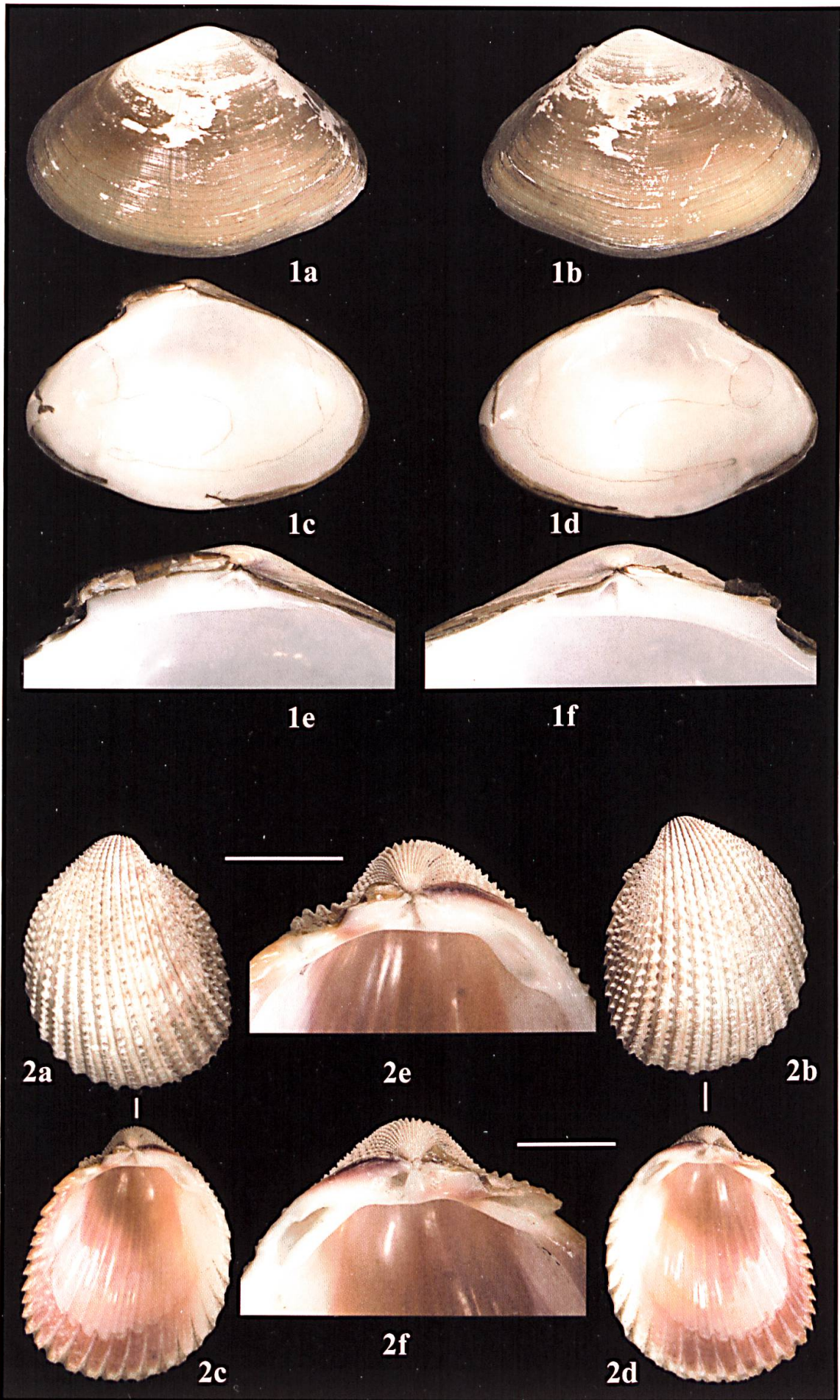


Plate 18

Mactridae.

Figs. 1a–f. *Mulina portoricensis* SHUTTLEWORTH, 1856. Syntype NMBE 501777, Puerto Rico, leg. Blauner 1853 (L = 36.3 mm, H = 32.95 mm).

- 1a, b: External view of valves. 1a: left valve; 1b: right valve.
1c, d: Internal view of valves. 1c: left valve; 1d: right valve.
1e, f: View of hinge area. 1e: left valve; 1f: right valve.

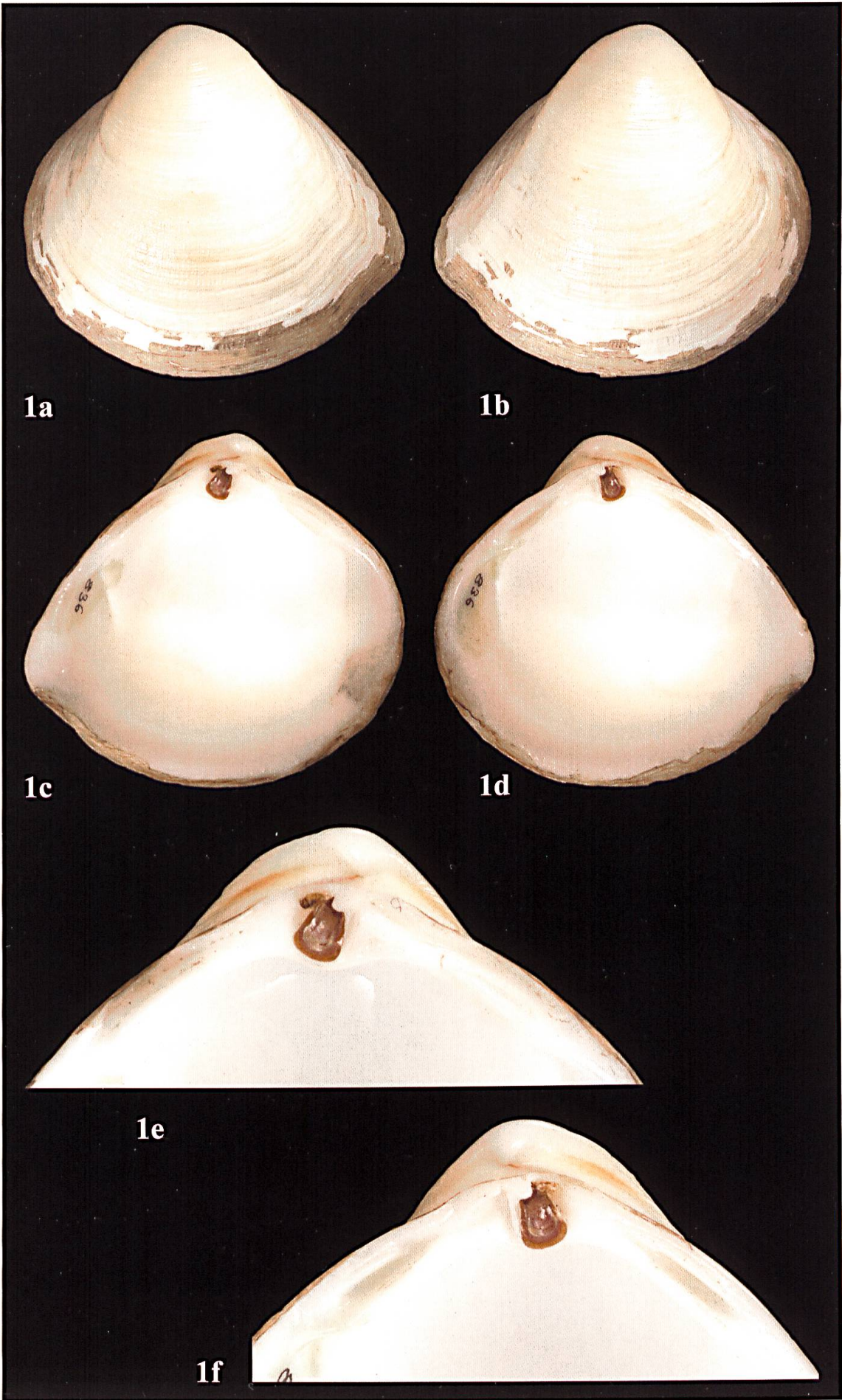


Plate 19

Sphaeriidae.

Figs. 1a–f. *Pisidium canariense* SHUTTLEWORTH, 1852. Syntype NMBE 501772, Canary Islands “Teneriffa”, leg. Blauner (L = 3.36 mm, H = 2.77 mm).

- 1a, b: External view of valves. 1a: left valve; 1b: right valve.
- 1c, d: Internal view of valves. 1c: left valve; 1d: right valve.
- 1e, f: View of hinge area. 1e: left valve; 1f: right valve.

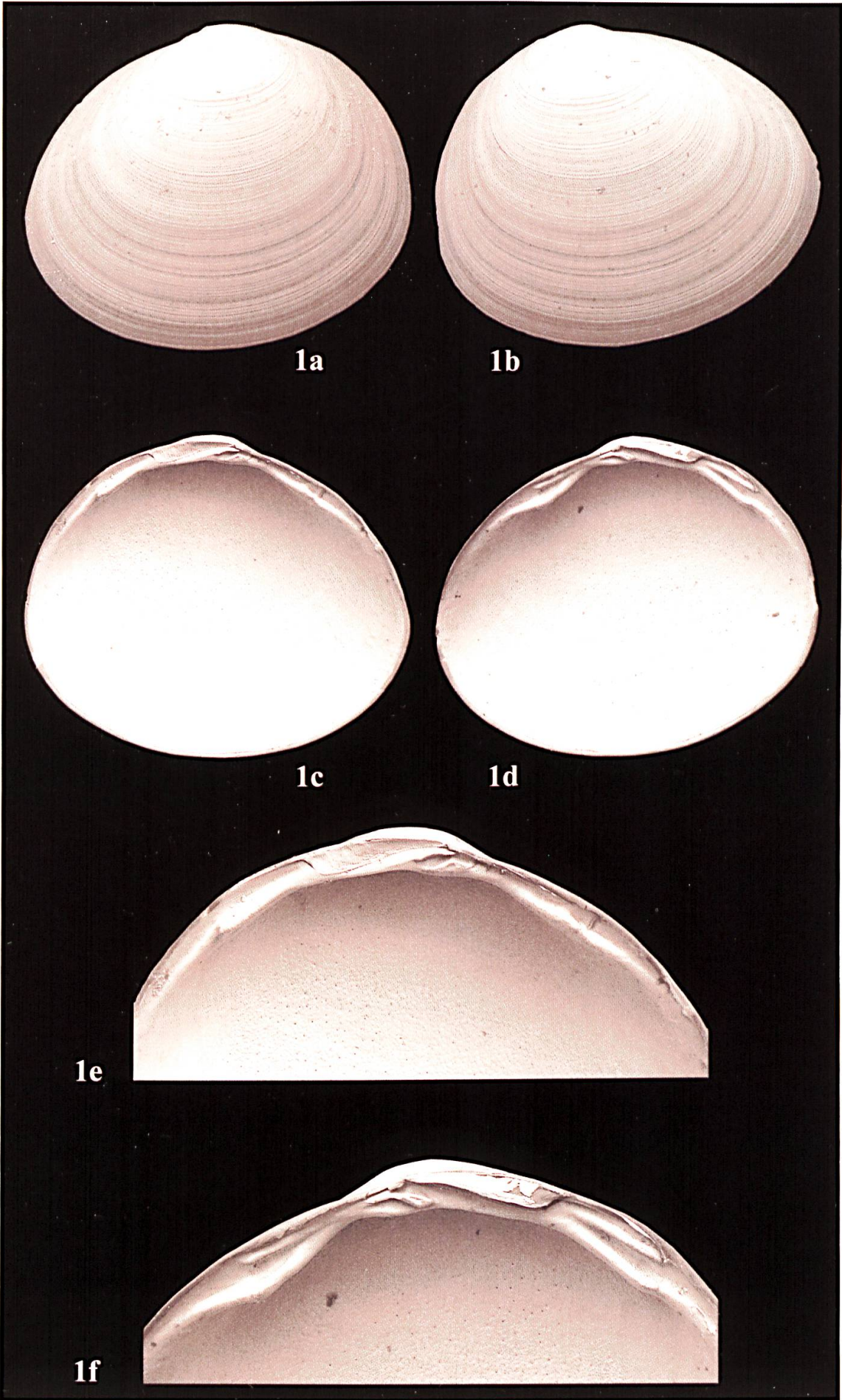


Plate 20

Oxychilidae, Orthalicidae, Succineidae.

- Fig. 1. *Helix blauneri* SHUTTLEWORTH, 1843. Lectotype NMBE 19038a, France, Corsica, leg. Blauner 1842 (D = 10.3 mm, scaled 4x).
- Fig. 2. *Orthalicus livens* SHUTTLEWORTH, 1856. Syntype MHNN, Mexico, “probabiliter prope Vera Cruz”, ex Nicolet (H = 57.8 mm, scaled 1.5x).
- Fig. 3. *Succinea hyalina* SHUTTLEWORTH, 1854. Syntype NMBE 18949, Puerto Rico “Rio Blanco”, leg. Blauner 1853 (H = 10.6 mm, scaled 6x).



INSTRUCTIONS TO AUTHORS

Content: Contributions to Natural History is a publication series of the Natural History Museum Bern (NMBE). Publications cover the fields of zoology, paleontology, and geology (including mineralogy and meteoritics) and should be related to scientific collections (preferably to those of the NMBE) and/or to research activities of museum scientists. In zoology, priority is given to contributions on taxonomy and systematics, biodiversity, morphology, faunistics, biogeography and all other aspects of organismic biology.

Language: Manuscripts may be written in English (preferred), German or French.

Review: Manuscripts will be peer-reviewed in any case by external referees.

Submission of manuscripts: Manuscripts should be sent as Email-attachments (preferred) or as three paper copies, including figures (no originals) and tables, to the managing editor. After reviewing, authors should send the revised version of the manuscript (including figures/tables) in a single paper copy and in an electronic version of the text (preferably MS Word or Word for Macintosh) and as txt file. Figures should be sent after reviewing either as originals or in an electronic version (jpeg, tiff, or other standard formats). Concerning figures and tables, authors should pay attention to the print area of 195 x 117 mm (including legends). Full breadth figures/tables are 117 mm wide with the legend at the base, all others are 85 mm wide with the legend at the side. If sent as originals, indicate magnification or size reduction of the figures at the backside of each original.

Presentation: Manuscripts must be clear and concise in style. Telegraphic style is recommended for descriptions. Establishment of new taxa must be in accordance with the rulings of the last edition of the International Code of Zoological Nomenclature and authors are expected to be familiar with the rulings of the Code. Name-bearing types must be deposited in a museum or in another institutional collection. Nomenclatural authors must be written in SMALL CAPS, with a comma between author and year of description. Bibliographical authors are written in normal style and without a comma between author and year. Use "&" for co-authors and "& al." instead of "et al.". Scientific names of genus-, species-, and subspecies-rank or (in case of citation of names proposed before 1961) of forms and varieties must be written in *italics*.

Manuscripts should be organised in the following way (in brackets: optional): Title, (subtitle), author(s), Abstract, (Kurzfassung, Résumé), Introduction, Material and Methods, (Abbreviations), Results, Discussion, Acknowledgements, References, Adress(es) of author(s), (Appendices). Figures, tables and legends should be on separate sheets. In case of large manuscripts, contents and index can be added. Footnotes should be avoided. Colour prints are possible in certain cases. Large manuscripts may require financial contributions to the printing costs by the authors.

Manuscripts should be typed or printed and be double-spaced throughout (including legends). Pages must be numbered. References must strictly follow the journal's style. Do not cite papers as "in prep." or other unpublished manuscripts like diploma theses or expert opinions, unless these manuscripts are accepted for publication in a scientific journal ("in press"). Examples for citation of literature:

Meyer, A.H., Schmidt, B.R. & Grossenbacher, K. (1998): Analysis of three amphibian populations with quarter-century long time series. — Proceedings of the Royal Society of London B 265: 523–528.

Groh, K. & Poppe, G. (2002): A conchological iconography. Family Acavidae excluding *Ampelita*. — 69 pp., 44 plates. ConchBooks, Hackenheim.

Selden, P.A. & Dunlop, J.A. (1998): Fossil taxa and relationships of chelicerates. — In: Edgecombe, G.D. (ed.), Arthropod fossils and phylogeny, pp. 303–331, Columbia University Press, New York.

Proofs: Galley proofs are sent to the authors for correction.

Reprints: 25 reprints will be supplied for free; additional reprints can be ordered with returned proof.