

# **A collection of spiders and harvestem from two caves in Ontario and Newfoundland, Canada (Araneae, Opiliones)**

Autor(en): **Breuss, Wilfried**

Objektyp: **Article**

Zeitschrift: **Contributions to Natural History : Scientific Papers from the Natural History Museum Bern**

Band (Jahr): - **(2009)**

Heft 12/1

PDF erstellt am: **30.06.2024**

Persistenter Link: <https://doi.org/10.5169/seals-786969>

## **Nutzungsbedingungen**

Die ETH-Bibliothek ist Anbieterin der digitalisierten Zeitschriften. Sie besitzt keine Urheberrechte an den Inhalten der Zeitschriften. Die Rechte liegen in der Regel bei den Herausgebern.

Die auf der Plattform e-periodica veröffentlichten Dokumente stehen für nicht-kommerzielle Zwecke in Lehre und Forschung sowie für die private Nutzung frei zur Verfügung. Einzelne Dateien oder Ausdrucke aus diesem Angebot können zusammen mit diesen Nutzungsbedingungen und den korrekten Herkunftsbezeichnungen weitergegeben werden.

Das Veröffentlichen von Bildern in Print- und Online-Publikationen ist nur mit vorheriger Genehmigung der Rechteinhaber erlaubt. Die systematische Speicherung von Teilen des elektronischen Angebots auf anderen Servern bedarf ebenfalls des schriftlichen Einverständnisses der Rechteinhaber.

## **Haftungsausschluss**

Alle Angaben erfolgen ohne Gewähr für Vollständigkeit oder Richtigkeit. Es wird keine Haftung übernommen für Schäden durch die Verwendung von Informationen aus diesem Online-Angebot oder durch das Fehlen von Informationen. Dies gilt auch für Inhalte Dritter, die über dieses Angebot zugänglich sind.

# A collection of spiders and harvestmen from two caves in Ontario and Newfoundland, Canada (Araneae, Opiliones)

**Wilfried Breuss**

## **ABSTRACT**

Contrib. Nat. Hist. 12: 297–313.

In the years 1995 and 2006 the author visited the Bonnechere Caves (Ontario) and the Corner Brook Caves (Newfoundland) and thereby conducted zoological collections. Five species of spiders could be ascertained: *Oreophantes recurvatus*, *Porrhomma convexum* (Linyphiidae), *Meta ovalis* (Tetragnathidae), *Rugathodes sexpunctatus* (Theridiidae) and *Eidmannella pallida* (Nesticidae). All of them are widely distributed and concerning their connection to caves they have to be classified as troglaphiles or troglonexes. As expected, no troglobionts were found. *P. convexum* seems to be especially noteworthy. There are only a few nearctic records of this species, all from the northwestern region (Alaska, Washington, Alberta and British Columbia). The present findings from the (most) eastern provinces of Canada emphasize the wide distribution of *P. convexum*. Harvestmen are represented by only one species, *Leiobunum elegans*. This phalangiid is widespread and common in the northeast of North America.

Keywords: biospeleology, caves, Canada, *Porrhomma convexum*, spiders, harvestmen, Newfoundland, Ontario

## **Introduction**

The inception of biospeleological research in North America is the description of a cave fish from the Mammoth Cave in Kentucky by DeKay in 1842 (Hobbs 2005). The interest in biospeleological questions has so far concentrated on the southern regions of the continent (USA, Mexico), whereas Canadian caves have only been given little attention. Summarising papers concerning the fauna of Canadian caves are from Peck & Fenton (1977), Peck (1988, 1994, 1998), Shaw & Davis (2000) and Moseley (2007).

Generally, caves in northern regions are only rarely populated by animals. Troglonites are rare, whereas troglonilic and troglonenic species predominate. Caves in temperate climate zones show a definitely higher number of obligatory inhabitants. Thus, the roughly 350 known invertebrate taxa from Canadian caves contain only about 5 troglonites and stygobites (Peck 1994), whereas 673 terrestrial and 300 aquatic troglonites are known from caves in the USA and Mexico (Culver & al. 2000). In this respect the diversity of the fauna of Canadian caves is comparable with that of caves in western Austria, where the author could detect also only about 5 troglonitic species, mainly from the aquatic fauna (Breuss 1993, 1995, 2001, 2002, 2004).

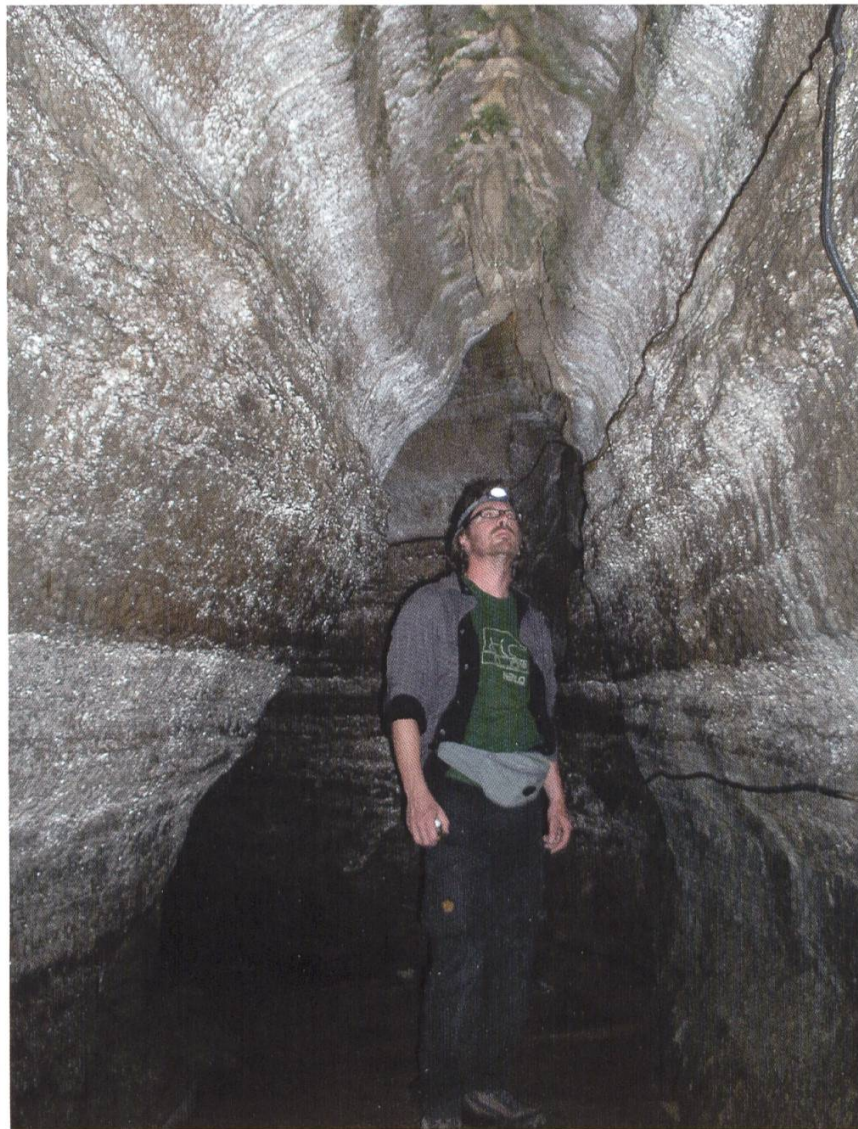
This reduction of species in northern caves is due to the influence of the last ice age – Holdhaus (1954) and Janetschek (1956) describe a "faunistic devastation" of formerly glaciated regions of the Alps. For North America, Peck (1994) ascertained that "The southern limit of Pleistocene glaciation is generally the northern distributional limit of troglonites". In Austria only the record of *Eukoenenia spelaea strouhali* CONDÉ (Palpigradi) in the year 1948 in a tunnel near Innsbruck (N-Tyrol) led Janetschek (1956) to the conclusion that even in regions with former glacial coverage, a survival of cold periods in the crevices of the mountains was generally possible. The discovery of a blind cave beetle of the genus *Arctaphaenops* and of the pseudoscorpion *Neobisium (Blothrux) aueri* BEIER in the North Eastern Alps corroborate this conclusion (Breuss 2004, Christian 1999, 2004). However, for the wide majority of subterranean communities in northern regions, an only post-glacial age has to be assumed. They may have reached the caves in the course of a reinvasion during the Holocene starting from southern "massifs de refuge" (Janetschek 1956). The possibility for remigration covering a great distance is presumed especially for stygobionts like the Western European *Proasellus cavaticus* (LEYDIG, 1871) (Asellidae). For this aquatic isopod such an expansion is assumed along the interstitial of the big rivers, starting from a southwestern refuge (Pust 1990, Breuss 1995).

To my tutor and mentor Dr. Konrad Thaler (19. 12. 1940–11. 7. 2005)

## Materials, Collecting sites

The recent collections from the Bonnechere Caves and the Corner Brook Caves contain altogether 36 spiders from 5 species in 4 families, as well as 3 harvestmen from only one species. Taxonomic references are not completely listed. For further information see Platnick (2009). Voucher specimens are deposit-

Fig. 1. Bonnechere Caves, Ontario: "Looking for *Porrhomma*" (Photo: O. Erdogan).



ed in the Canadian National Collection of Insects, Arachnids and Nematodes (CNC), the Collection W. Breuss (CWB) and the Natural History Museum Bern (NMBE).

**Bonnechere Caves**, Eganville, ON (N 45° 30', W 77° 00'): Fig. 1.

The Bonnechere Caves are located in the Bonnechere River Park 8 km from Eganville south of Pembroke (Renfrew County). The caves were discovered in 1855 by the geologist Alexander Murray but first exploration did not begin before 1955. Today, about 150 m of passages are known. The caves developed in the mid-Ordovician limestones of the Ottawa Formation. After deglaciation the Bonnechere Caves were submerged by the Champlain Sea and subsequently by the Bonnechere River. From May to October water is pumped out of the caves for tourist purposes. During the winter season parts of the caves are flooded.

**Corner Brook Caves**, Corner Brook, NF (N 48° 55', W 57° 54'): Fig. 2.

The Corner Brook Caves are situated in the Ordovician limestones, about 2 km south of the city of Corner Brook, western Newfoundland. These lime-



Fig. 2. Corner Brook Caves, Newfoundland: Entrance near Hoover Dam (Photo: H. Wäger).

stones are partially metamorphosed to marbles. The caves were carved out by the water of the Corner Brook Stream. Because a part of the stream still flows through the cave, especially in wet seasons the water level has to be checked before entering Corner Brook Caves. Research on the geology and genesis of the Corner Brook Caves was done by Chislett (1996). So far about 450 m of passages have been explored and three entrances are known. The majority of the collected specimens are from the entrance area near Hoover Dam.

#### **Collecting sites of *Porrhomma*-specimens in Vorarlberg, Austria:**

**Barbarastollen** (N 47° 06' 00", E 09° 55' 06"): historic mine near Schruns, Bartholomäberg; total length 78 m, 1352 m a.s.l.

**Kobelach** (N 47° 23' 18", E 09° 46' 04"): gorge of the Kobelach river, Dornbirn; 560 m a.s.l.

**Baschg-Cave** (N 47° 15' 00", E 09° 40' 00"): karstcave near Feldkirch, length 310 m, 780 m a.s.l.

#### Abbreviations:

ad	adult
sad	subadult
juv	juvenile

## Faunistic and taxonomic results

### Araneae

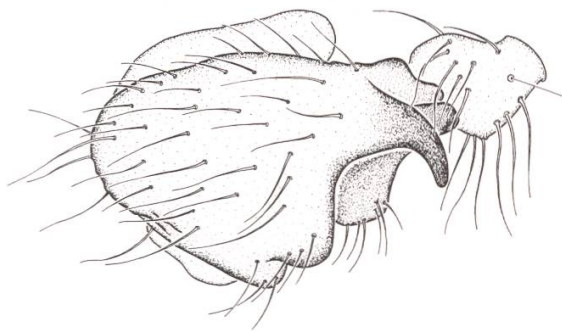
#### Linyphiidae

##### *Oreophantes recurvatus* (EMERTON, 1913) (Figs. 3–6)

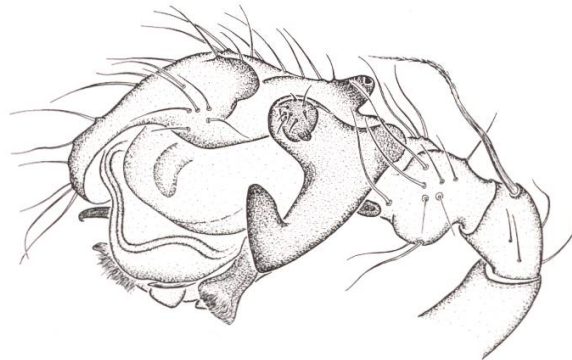
Taxonomy: Paquin & Dupérré (2003), Helsdingen (1973, sub *Oreonetides recurvatus*).

Material examined: Bonnechere Caves: 1 ♂ 2 ♀, 23. 8. 1995 (CWB); 1 ♀ 1 sad ♀, 7. 8. 2006 (NMBE); Corner Brook Caves: 1 sad ♀, 26. 7. 2006.

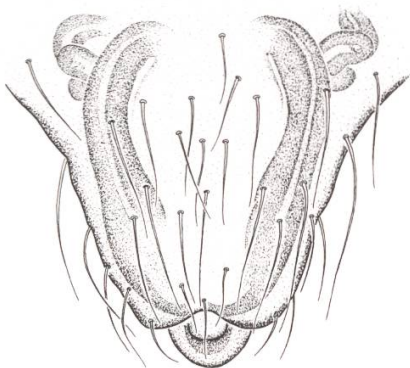
*O. recurvatus* is the only species known within the genus. In Newfoundland *O. recurvatus* is recorded from mixed coniferous woods (Pickavance & Dondale 2005). Koponen (1987) mentions this species from a Balsam fir forest in 860 m a.s.l. at Mont du Lac des Cygnes, Quebec. In the Corner Brook



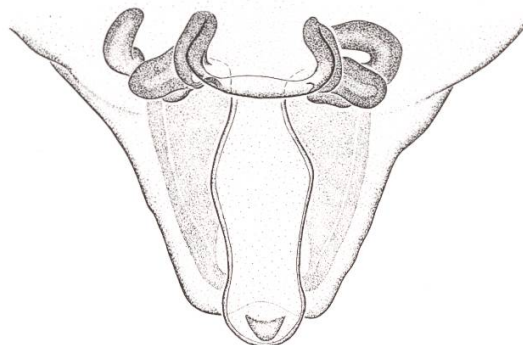
3 0.2 mm



4 0.2 mm



5 0.2 mm



6 0.2 mm

Figs. 3–6. *Oreophantes recurvatus* (EMERTON, 1913). Bonnechere Caves. Left male palp in dorsal (3) and retrolateral view (4); female epigynum in ventral (5) and dorsal view (6).

	Bonnechere Caves n = 5 (5)		Corner Brook Caves n = 0 (1)		Baschg-Cave n = 8 (19)	
	♂	♀	♂	♀	♂	♀
<b>TL</b>	2.27 2.05–2.41	2.29 2.00–2.51	-	2.32 -	2.27 2.06–2.40	2.48 2.34–2.54
<b>PL</b>	1.19 1.10–1.29	1.11 1.04–1.27	-	1.18 -	1.16 -	1.18 -
<b>PW</b>	0.87 0.82–0.90	0.79 0.73–0.90	-	0.90 -	0.84 -	0.81 -
<b>LF1</b>	1.11 1.04–1.20	1.03 0.94–1.16	-	1.12 -	1.03 -	1.06 -
<b>DF1</b>	0.20 0.20–0.22	0.19 0.18–0.22	-	0.24 -	0.19 -	0.20 -
<b>DF1/LF1</b>	0.18 0.17–0.19	0.19 0.18–0.19	-	0.21 -	0.19 -	0.19 -
<b>Tm1</b>	0.40 0.37–0.42	0.42 0.37–0.44	-	0.47 -	0.45 -	0.46 -

**Tab. 1: *Porrhomma convexum*, m (f): Average and variation of total length (TL), length of prosoma (PL), width of prosoma (PW), length femur 1 (LF1), diameter femur 1 (DF1) and position of trichobothrium on metatarsus 1 (Tm1). Measurements of specimens from Baschg-Cave are taken from Breuss (1995).**

Caves the author collected *O. recurvatus* only in the entrance area, whereas in Bonnechere Caves specimens were found throughout the cave. Further records from caves in Ontario are from Hope Bay Cave, Horse Collar Cave and Mount Nemo Cave (Peck 1988; sub *Oreonetides recurvatus* EMERTON).

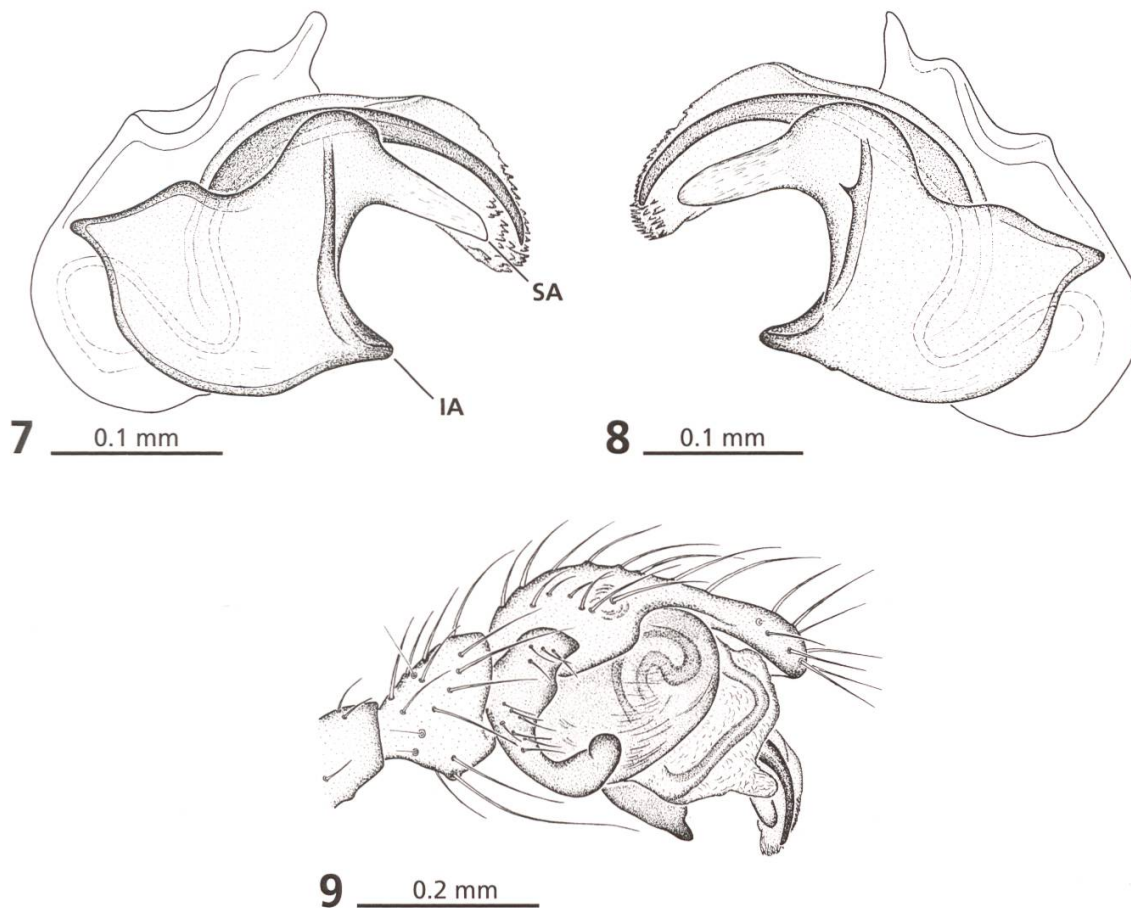
Distribution: Nearctic, northern N-America (Ubick & al. 2005).

### ***Porrhomma convexum* (WESTRING, 1851) (Figs. 7–15, Tab. 1)**

Taxonomy: Thaler (1968), Bourne (1977, 1977/78), Breuss (1995).

Material examined: Bonnechere Caves: 6 ♂ 5 ♀, 23. 8. 1995 (1 ♂ 1 ♀, CNC; 1 ♂ 1 ♀, NMBE; CWB); 1 sad ♂, 1 juv, 7. 8. 2006; Corner Brook Caves: 1 ♀, 26. 7. 2006; Barbarastollen: 1 ♂, 8. 9. 1997; Kobelach: 1 ♀, 24. 7. 1999 (CWB).

Diagnosis: Basically the classification of *Porrhomma*-species is difficult, and even Thaler emphasizes: "...jede Beschäftigung mit diesen Tieren erfordert [demnach] viel Geduld" (Thaler 1968: 363). For example the colouration but also the size and the relative position of the eyes show considerable intraspecific variation. Additionally to the interpretation of the sexual organs, a biometric classification according to Bourne (1977, 1977/78) and Breuss (1995) might be helpful (Tab. 1). For taxonomic confirmation, the Canadian specimens were compared with *P. convexum* from Austria.



**Figs. 7–9.** *Porrhomma convexum* (WESTRING, 1851). Barbarastollen (7), Bonnechere Caves (8, 9). Embolic division (7, 8); right palp in retrolateral view (9). IA: inferior apophysis; SA: superior apophysis.

Distribution of leg spines (♂, ♀; n=10): Femora I–IV: dorsal 1-1-0-0, prolateral 1-0-0-0; Patellae I–IV: 1-1-1-1; Tibiae I–IV: dorsal 2-2-2-2, prolateral 1-0-0-0, retrolateral 1-1-0-0.

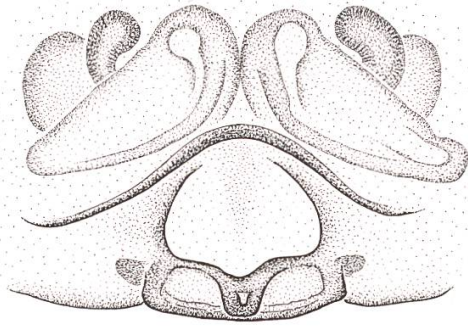
The distribution of leg spines is identical in both sexes. Only two specimens show a slight deviation (two dorsal spines on femur I and two retrolateral spines on tibia I respectively).

Specimens from Canada and Austria show high correspondence in all features considered (Figs. 7–15, Tab. 1). Only in some of the Canadian males, a minute tooth was present on the groin of the embolic division, between the inferior (IA) and the superior apophysis (SA, Fig. 8).

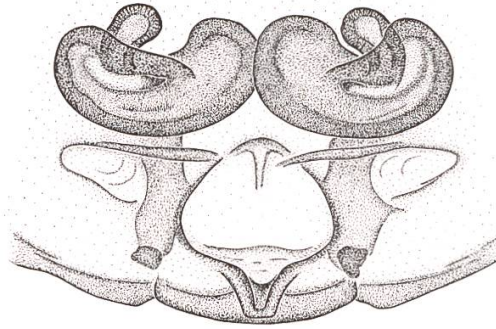
Habitat: In Canada as in Europe, *P. convexum* colonises habitats with constantly high humidity and low temperature, such as entrances of caves and mines, river banks and rock slopes. The highest records of *P. convexum* in Europe are from 2200 m a.s.l.

Distribution: Holarctic; in the Nearctic from Alaska to Greenland and south to Washington (Bennett & al. 2006).

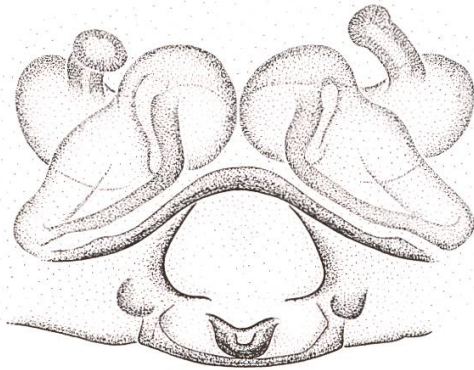




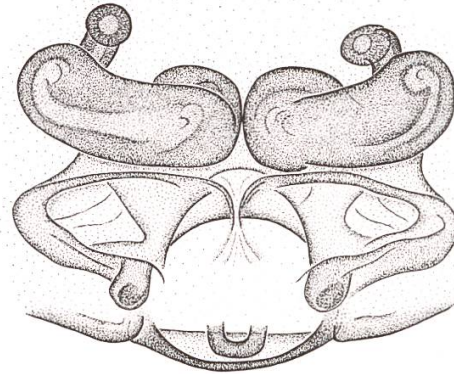
10 0.1 mm



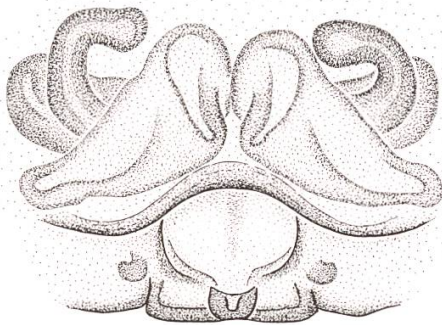
11 0.1 mm



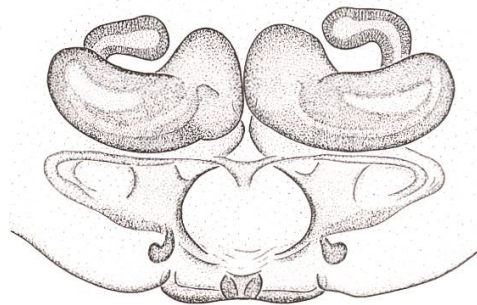
12 0.1 mm



13 0.1 mm



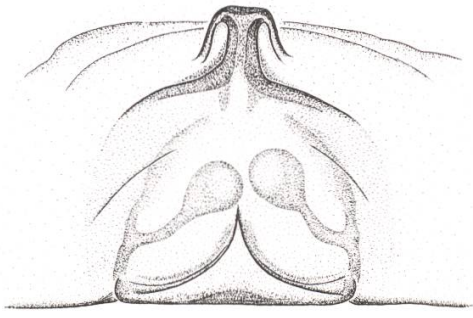
14 0.1 mm



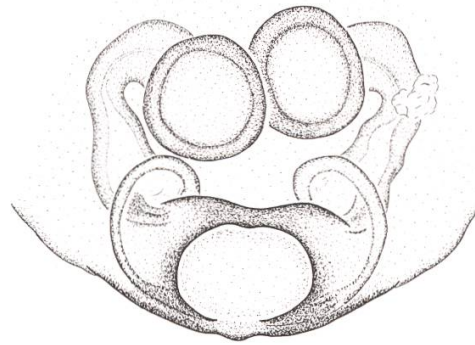
15 0.1 mm

Figs. 10–15. *Porrhomma convexum* (WESTRING, 1851). Bonnechere Caves (10, 11), Corner Brook Caves (12, 13), Kobelach (14, 15). Female epigynum in ventral (10, 12, 14) and dorsal view (11, 13, 15).

The genus *Porrhomma* contains 33 species plus one subspecies (Platnick 2009). Currently, 9 species are known from the nearctic region (Buckle & al. 2001, Ubick & al. 2005). These species are: *Porrhomma boreale* (BANKS, 1899) from Alaska; *P. cavernicola* (KEYSERLING, 1886) from the USA; *P. convexum* (WESTRING, 1851) from Canada and the USA; *P. egeria* SIMON, 1884 from Ontario; *P. gertschi* HACKMAN, 1954 from Newfoundland; *P. macrochelis* (EMERTON, 1917) from Canada and Alaska; *P. ocella* CHAMBERLIN & IVIE, 1943



16 0.2 mm



17 0.1 mm

Figs. 16–17. *Eidmannella pallida* (EMERTON, 1875) (16), *Rugathodes sexpunctatus* (EMERTON, 1882) (17). Corner Brook Caves (16), Bonnechere Caves (17). Female epigynum in ventral view.

from the USA and Alberta; *P. sodonta* (CHAMBERLIN, 1948) from the USA and *P. terrestre* (EMERTON, 1882) from the USA, Alberta, Newfoundland and Quebec.

The first nearctic record of *P. convexum* comes from the Aleutians (Holm 1960). Since then, *P. convexum* has been mentioned only from a few localities in northwestern North America: Alberta (Waterton Lakes NP, Bear Hump; Castle Crown Wilderness, Castle River; Shorthouse 2006), British Columbia (Carmanah Valley, North Vancouver; Bennett & al. 2006) and Washington (without exact locality; Crawford 1988). For Ontario and Newfoundland *P. convexum* is recorded for the first time. Two females of *Porrhomma* from Newfoundland ("Glide Lake" and "Corner Brook", Pickavance & Dondale, 2005) should be examined for an eventual affiliation to *P. convexum*.

Regarding caves as habitats, only *P. cavernicola*, which is widespread in the Appalachian Mountains, is considered as troglobiont (Miller 2005). *P. convexum* and *P. egeria* can be classified as troglophilic. According to Peck (1988), *P. egeria* is known from only three caves in Ontario (Hope Bay Cave, Horse Collar Cave, Rockwood Caves).

## Nesticidae

### *Eidmannella pallida* (EMERTON, 1875) (Fig. 16)

Taxonomy: Paquin & Dupérré (2003).

Material examined: Corner Brook Caves: 1 ♀, 1 juv, 26. 07. 2006 (CWB).

Diagnosis: Total length 2.2–3.5 mm (♂), 3.5–4 mm (♀); male palp and epigynum characteristic. "The degree of troglomorphy and the coloration pattern of *Eidmannella pallida* is variable" (Ubick & al. 2005).

The genus *Eidmannella* is represented in North America with 7 species. Six of these are regarded as locally endemic in caves in Texas (Ubick & al. 2005). Only *E. pallida* shows a wide distribution with records from the USA, Mexico, Central America and the West Indies. The northern border of distribution is reached in southern Ontario, Quebec and Newfoundland. Peck (1988) reports this "widespread troglomorphic species" from Moira Cave and Museum Cave No. 1 in Ontario (sub *Nesticus pallidus*). In Newfoundland *E. pallida* is regarded as having been introduced. Habitats are mixed coniferous woods, caves and human habitations (Pickavance & Dondale 2005).

In caves in western Austria the author himself regularly found the closely related, holarctic and troglomorphic *Nesticus cellulanus* (CLERCK, 1757) (Breuss 1995). This species is introduced on the northeast coast with records from New York, Massachusetts, Maine, Nova Scotia and Quebec (Ubick & al. 2005). Moseley (2007) mentions *N. cellulanus* from the parietal fauna of Frenchman's Cave in Nova Scotia, replacing *E. pallida*. These are the first cave records of *N. cellulanus* in North America.

Distribution: cosmopolitan (Platnick 2009), almost cosmopolitan (Wunderlich 1992).

## Tetragnathidae

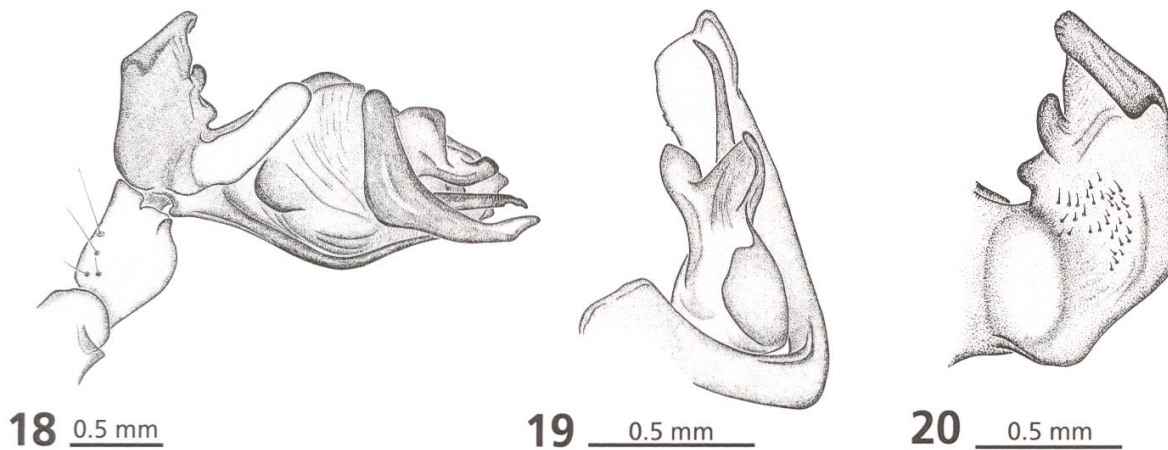
### ***Meta ovalis* (GERTSCH, 1933)** (Figs. 18–20)

Taxonomy: Marusik & Koponen (1992) sub *Meta americana*, Paquin & Dupérré (2003).

Material examined: Bonnechere Caves: 1 sad ♂, 1 sad ♀, 23. 8. 1995; 1 ♂, 1 sad ♂, 1 juv, 7. 8. 2006; Corner Brook Caves: 2 sad ♀, 26. 7. 2006 (CWB).

Two species of the genus *Meta* are known from North America: *M. dolloff* LEVI, 1980 from California and *M. ovalis* GERTSCH, 1933 from the Northeast (Ubick & al. 2005). Originally, North American specimens of *Meta* were assigned to the European *Meta menardi* LATREILLE, 1804. Marusik & Koponen (1992) split *M. menardi* into three closely related, allopatric species: *M. menardi* in Europe, *M. manchurica* in the Russian Far East and *M. americana* in eastern North America. Finally, Dondale (1995) synonymised *M. americana* MARUSIK & KOPONEN, 1992 with *M. ovalis* (GERTSCH, 1933).

The troglomorphic orb-weaving spider *Meta ovalis* is, like *M. menardi* in Europe, a common species of cave entrances. In Newfoundland *M. ovalis* also settles in houses and outbuildings, basements and rootcellars (Pickavance & Dondale 2005). *M. ovalis* is already known from both investigated caves.



Figs. 18–20. *Meta ovalis* (GERTSCH, 1933): Bonnechere Caves. Right male palp in retrolateral view (18), embolic apophysis (19) and paracymbium (20).

Additional subterranean records from Ontario are listed in Peck (1988). *M. ovalis* is also common in caves and mines in Nova Scotia and southern New Brunswick (Moseley 2007).

Distribution: Eastern North America with northernmost records from Newfoundland, Nova Scotia, southern Quebec and the northern shore of Lake Superior. The southernmost record is from Louisiana (Marusik & Koponen 1992).

## Theridiidae

### *Rugathodes sexpunctatus* (EMERTON, 1882) (Fig. 17)

Taxonomy: Paquin & Dupérré (2003).

Material examined: Bonnechere Caves: 2 ♀, 2 juv, 23. 8. 1995; 1 juv, 7. 8. 2006 (CWB).

Already Peck (1988) mentions *R. sexpunctatus* from the Bonnechere Caves. The present specimens were found in the entrance area of this cave. The author has not been able to prove the existence of this species in the Corner Brook Caves. In Newfoundland *R. sexpunctatus* populates mixed coniferous woods, shrubs and herbs, gardens (Pickavance & Dondale 2005). Further records of *R. sexpunctatus* from caves and mines in Ontario are from Alona Bay Mine, Hope Bay Cave, Mount Nemo Cave, Renfrew Mine, Rockwood Caves, Stonehouse Cave and Wawa Mine (Peck 1988, sub *Theridion sexpunctatum*).

Distribution: USA, Canada, Alaska, Russia (Platnick 2009).

# Opiliones

## Sclerosomatidae

### *Leiobunum elegans* WEED, 1889 (Figs. 21–23)

*Leiobunum bicolor* (Wood, 1868)

Taxonomy: Edgar (1990).

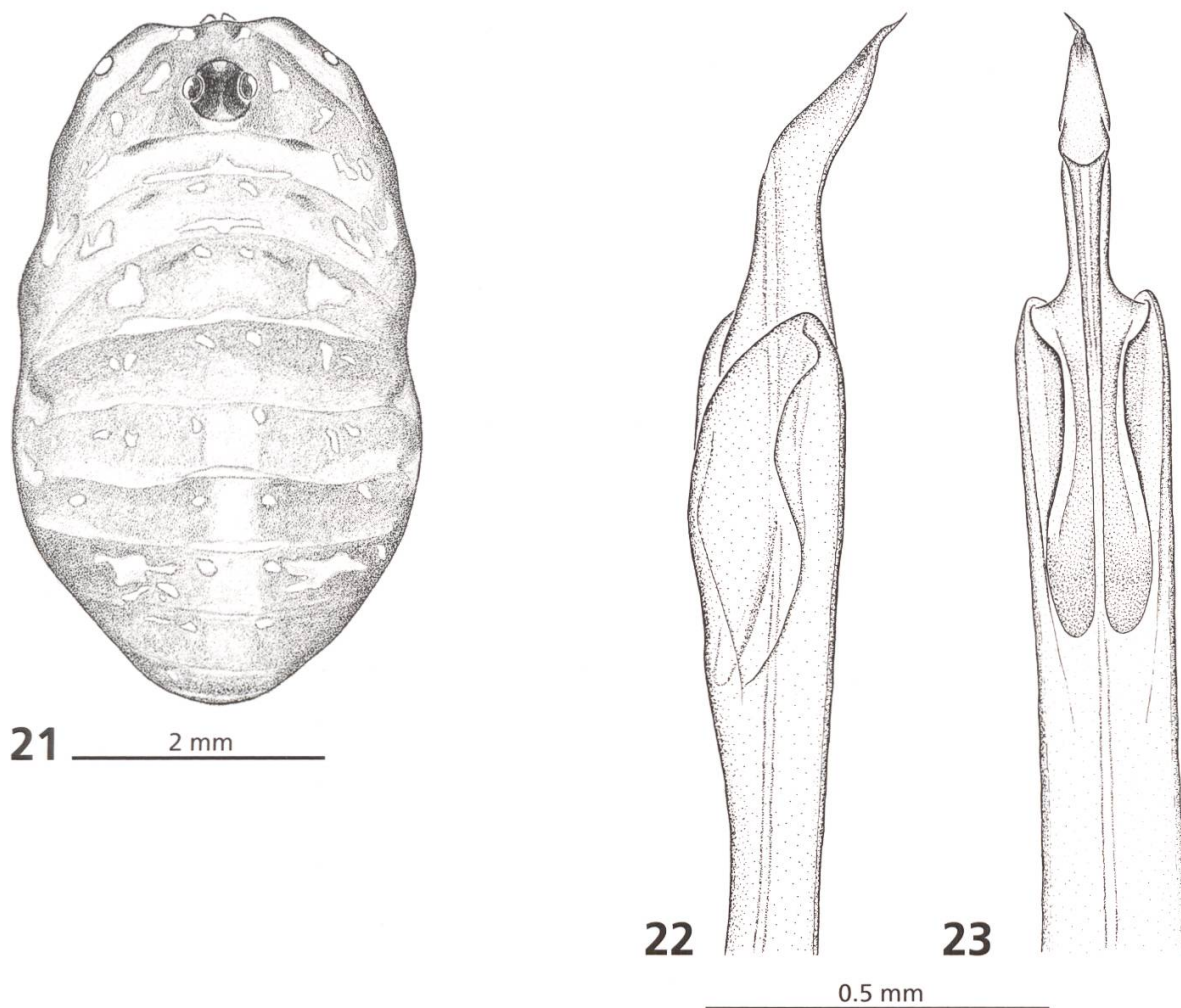
Material examined: Bonnechere Caves: 1 ♂, 23. 8. 1995, 1 sad ♂, 7. 8. 2006; Corner Brook Caves: 1 sad ♀, 26. 7. 2006 (CWB).

Habitus as well as penis structure of the collected specimens allow a classification as the woodland harvester *Leiobunum elegans* (Figs. 21–23). However, the lack of coxal teeth, which are characteristic for the genus *Leiobunum*, is remarkable. According to Martens (1978) this negative feature points to the genus *Nelima*. A generic transfer of *L. elegans* to *Nelima* is intended for the next edition of the "Catalogue of the Opiliones of North America" (Cokendolpher pers. comm., 24. 10. 2006). Moseley (2007) already follows this suggestion and reports *L. elegans* (sub *Nelima elegans*) from several caves and mines from southern New Brunswick and Nova Scotia, where this species commonly hibernates. Peck (1988) also gives one record from Ontario's "Museum Cave No. 1" (sub *L. bicolor*).

Distribution: From eastern North America to the Midwest, with the northern border of distribution in Ontario and Newfoundland (Cokendolpher & Lee 1993).

## Discussion

Different biospeleological studies come to the conclusion, that the fauna of caves in northern regions are strongly influenced by the glacial history of the specific area (e.g. Holdhaus 1954, Janetschek 1956, Peck 1988, Breuss 1995, Moseley 2007). One of the consequences is a decreasing number of troglonbionts particularly in the terrestrial fauna of caves with increasing latitude. For this reason, in North America biological research in subterranean habitats was done primarily in the United States and in Mexico. With the increasing number of ecological studies, the non-obligate fauna of Canadian caves only recently became of notable interest (Moseley 2007). Including the present study, from the investigated caves currently 5 (Bonnechere Caves) and 4 (Corner Brook Caves) species of spiders respectively, and one harvestman are known (Tab. 2).



Figs. 21–23. *Leobunum elegans* WEED, 1889: Corner Brook Caves (21), Bonnechere Caves (22, 23). Habitus subadult male (21); penis in lateral (22) and ventral view (23).

The present collection from the Bonnechere Caves and the Corner Brook Caves contains 34 spiders and 3 harvestmen. Spiders are represented by 5 species in 4 families, harvestmen by only one species. As expected, all ascertained species are widely distributed and have to be classified as troglophilic or troglonexic. Especially noticeable is *Porrhomma convexum* (Linyphiidae) which is well known from Europe. This species has just recently been recorded from western North America. The present findings from the far east of Canada signify a considerable expansion of the known area of distribution. Moseley (2007) mentions that 17% of the cavernicolous terrestrial invertebrates of Nova Scotia and southern New Brunswick are probably European in origin. Given examples are the nesticid spider *Nesticus cellulanus* and the springtail *Folsomia fimitaria* (L.). Presently it appears uncertain whether *P. convexum* is autochthonous in the eastern provinces of Canada or has been introduced from the palaeartic region.

Species	Bonnechere Caves	Corner Brook Caves
<i>Oreophantes recurvatus</i>	Br	Br
<i>Porrhomma convexum</i>	Br	Br
<i>Eidmannella pallida</i>	-	PD, Br
<i>Meta ovalis</i>	Pe, Br	Br
<i>Tetragnatha elongata</i>	Pe	-
<i>Rugathodes sexpunctatus</i>	Pe, Br	-
<i>Leiobunum elegans</i>	Br	Br

**Tab. 2. Spiders and harvestmen from Bonnechere Caves, Ontario and Corner Brook Caves, Newfoundland: Br = Breuss (present study), PD = Pickavance & Dondale (2005), Pe = Peck (1988).**

## Acknowledgments

First of all I would like to thank Dr. Konrad Thaler (1940–2005). It was a great fortune to be his student for 16 years.

My gratitude also belongs to Dr. Barbara Thaler-Knoflach (Innsbruck) for proof-reading the manuscript and for important suggestions. For linguistic advice I am indebted to Mag. Andrea Häfele-Scharf (Feldkirch). Mag. Harald Wäger (Rankweil) and Mr. Oliver Erdogan (Götzis) accompanied me on the field trips and provided the photos of the visited caves – "Thanks folks!". For faunistic information, especially on Canadian *Porrhomma*-species, I am grateful to Dr. Charles D. Dondale (Ottawa) and Dr. Roger Pickavance (St. John's). Thanks to Dr. James C. Cokendolpher (Lubbock) for checking the determination of *L. elegans* and for taxonomic information. For general information on the investigated caves I am grateful to Dr. Norm R. Catto (St. John's), Mr. Chris Hinsperger (Eganville) and Mr. Scott "Scotty" Holloway ("My Newfoundland Adventures", Corner Brook).

## References

- Bennett, R., Blades, D., Buckle, D., Dondale, C. & West, R.C. (2006): The Spiders of British Columbia. — In: Klinkenberg, B. (Editor), E-Fauna BC: Electronic Atlas of the Fauna of British Columbia. [www.efauna.bc.ca]. Lab for Advanced Spatial Analysis, Department of Geography, University of British Columbia, Vancouver.
- Bourne, J.D. (1977): Contribution à l'étude du genre *Porrhomma* (Araneae: Linyphiidae). Caractères morphologiques, biométrie et écologie au niveau des populations des *P. convexum* (WESTRING) et *P. myops* (SIMON). — Mitteilungen der Schweizerischen Entomologischen Gesellschaft 50: 153–165.
- Bourne, J.D. (1977/78): A contribution to the study of the genus *Porrhomma* (Araneae: Linyphiidae). Notes on a population of *P. egeria* (SIMON) and other cavernicolous species. — International Journal of Speleology 9: 89–96.

- Breuss, W. (1993): Zum Vorkommen von *Ischyropsalis helvetica* ROEWER in Graubünden und in Nordtirol (Samnaun-Gruppe) (Arachnida, Opiliones, Ischyropsalididae). — Berichte des Naturwissenschaftlich-Medizinischen Vereins in Innsbruck 80: 251–255.
- Breuss, W. (1995): Zum Vorkommen von Arthropoden in einigen Höhlen Vorarlbergs (Österreich) (Arachnida, Hexapoda, Crustacea). — Berichte des Naturwissenschaftlich-Medizinischen Vereins in Innsbruck 82: 227–240.
- Breuss, W. (2001): Bemerkenswerte Spinnen aus Vorarlberg (Austria) – I (Arachnida: Araneae: Lycosidae, Theridiidae, Mysmenidae, Gnaphosidae, Salticidae). — Berichte des Naturwissenschaftlich-Medizinischen Vereins in Innsbruck 88: 183–193.
- Breuss, W. (2002): Die Scherenkanker (Arachnida: Opiliones, Ischyropsalididae) von Vorarlberg (Österreich). — Vorarlberger Naturschau 11: 227–232.
- Breuss, W. (2004): Bemerkungen zur Wirbellosenfauna von Höhlen Vorarlbergs und angrenzender Gebiete. — Vorarlberger Naturschau 15: 127–138.
- Buckle, D.J., Carroll, D., Crawford, R.L. & Roth, V.D. (2001): Linyphiidae and Pimoidae of America north of Mexico: Checklist, synonymy, and literature. Part 2. — In: Paquin, P. & Buckle, D.J., Contributions à la connaissance des Araignées (Araneae) d'Amérique du Nord, pp. 89–191, Fabriques, Supplément 10.
- Chislett, R.T. (1996): Corner Brook Cave, Newfoundland: A description and interpretation of the genesis of the cave and features associated with it. — B. Sc. thesis, Dept. of Geography, Memorial University, St. John's NL, 85 pp.
- Christian, E. (1999): Vom Sandlückensystem zur Riesenhöhle: Subterranbiologie in Österreich. — Decheniana, Beihefte 37: 121–126.
- Christian, E. (2004): Palpigraden (Tasterläufer) – Spinnentiere in einer Welt ohne Licht. — Denisia 12, Neue Serie 14: 473–483.
- Cokendolpher, J.C. & Lee, V.F. (1993): Catalogue of the Cyphopalpatores and bibliography of the harvestmen (Arachnida, Opiliones) of Greenland, Canada, U.S.A., and Mexico. — 82 pp., Vintage Press, Lubbock.
- Crawford, R.L. (1988): An annotated checklist of the spiders of Washington. — Burke Museum Contributions in Anthropology and Natural History 5: 1–48.
- Culver, D.C., Master, L.L., Christman, M.C. & Hobbs, H.H. (2000): Obligate Cave Fauna of the 48 Contiguous United States. — Conservation Biology 14(2): 386–401.
- Dondale, C.D. (1995): A new synonym in the genus *Meta* (Araneae, Tetragnathidae). — Journal of Arachnology 23: 125–126.
- Edgar, A.L. (1990): Opiliones (Phalangida). — In Dindal, D.L. (ed.), Soil Biology Guide, pp. 529–581, Wiley & Sons, New York, Singapore.
- Helsdingen, P.J. van (1973): Annotations on Two Species of Linyphiid Spiders Described by the Late Wilton Ivie. — Psyche 80(1–2): 48–61.
- Hobbs III, H.H. (2005): Diversity Patterns in the United States. — In: Culver, D.C. & White, W.B. (eds.), Encyclopedia of Caves, pp. 170–183, Elsevier Academic Press, Burlington (MA, USA), San Diego (CA, USA), London (UK).
- Holdhaus, K. (1954): Die Spuren der Eiszeit in der Tierwelt Europas. — Abhandlungen der Zoologisch-Botanischen Gesellschaft in Wien 18: 1–493.
- Holm, A. (1960): On a collection of spiders from Alaska. — Zoologiska bidrag från Uppsala 33(9): 109–134.



- Janetschek, H. (1956): Das Problem der inneralpinen Eiszeitüberdauerung durch Tiere (Ein Beitrag zur Geschichte der Nivalfauna). — Österreichische zoologische Zeitschrift 6: 421–506.
- Koponen, S. (1987): Communities of ground-living spiders in six habitats on a mountain in Quebec, Canada. — Holarctic Ecology 10: 278–285.
- Martens, J. (1978): Weberknechte, Opiliones. — Tierwelt Deutschlands 64: 1–464. Fischer, Jena.
- Marusik, Y.M. & Koponen, S. (1992): A review of *Meta* (Araneae; Tetragnathidae), with description of two new species. — Journal of Arachnology 20: 137–143.
- Miller, J.A. (2005): A redescription of *Porrhomma cavernicola* KEYSERLING (Araneae, Linyphiidae) with notes on Appalachian troglobites. — Journal of Arachnology 33: 426–438.
- Moseley, M. (2007): Acadian biospeleology: composition and ecology of cave fauna of Nova Scotia and southern New Brunswick, Canada. — International Journal of Speleology 36 (1): 1–21.
- Paquin, P. & Buckle, D.J. (2001): Contributions à la connaissance des Araignées (Araneae) d'Amérique du Nord. — Fabriques, Supplément 10: 191 pp.
- Paquin, P. & Dupérré, N. (2003): Guide d'identification des Araignées (Araneae) du Québec. — Fabriques, Supplément 11: 251 pp.
- Peck, S.B. (1988): A review of the cave fauna of Canada, and the composition and ecology of the invertebrate fauna of caves and mines in Ontario. — Canadian Journal of Zoology 66: 1197–1213.
- Peck, S.B. (1994): Canada. — In: Juberthie, Ch. & Decu, V. (ed.), Encyclopaedia Biospeologica (Tome I), pp. 381–388, Société Internationale de Biospéologie, Moulis (C.N.R.S.) et Bucarest (Academie Roumaine).
- Peck, S.B. (1998): A summary of diversity and distribution of the obligate cave-inhabiting faunas of the United States and Canada. — Journal of Cave and Karst Studies 60(1): 18–26.
- Peck, S.B. & Fenton, M.B. (1977): The fauna of Canadian caves. — Proceedings of the 6<sup>th</sup> International Congress of Speleology, Olomouc, July 1973, 5, p. 195–200.
- Pickavance, J.R. & Dondale, C.D. (2005): An Annotated Checklist of the Spiders of Newfoundland. — The Canadian Field-Naturalist 119: 254–275.
- Platnick, N.I. (2009): The world spider catalog, Version 9.5. American Museum of Natural History, online at <http://research.amnh.org/entomology/spiders/catalog/index.html>
- Pust, J. (1990): Untersuchungen zur Systematik, Morphologie und Ökologie der in westfälischen Höhlen vorkommenden aquatischen Höhlentiere. — Abhandlungen aus dem Westfälischen Museum für Naturkunde 52: 1–188.
- Shaw, P. & Davis, M. (2000): Invertebrates from Caves on Vancouver Island. — In: Darling, L.M. (ed.), Proceedings of a conference on the biology and management of species and habitats at risk, pp. 121–124, Kamloops, B.C.
- Shorthouse, D.P. (ed.) (2006): The Nearctic Spider Database. World Wide Web electronic publication. <http://canadianarachnology.webhop.net>. (Accessed: 10/31/2006)
- Thaler, K. (1968): Zum Vorkommen von *Porrhomma*-Arten in Tirol und anderen Alpenländern (Arachn., Araneae, Linyphiidae). — Berichte des Naturwissenschaftlich-Medizinischen Vereins in Innsbruck 56: 361–388.
- Ubick, D., Paquin, P., Cushing, P.E. & Roth, V. (eds.) (2005): Spiders of North America – an identification manual. — American arachnological Society: 377 pp.

## **Address of the author:**

Mag. Wilfried Breuss  
Alter Steinleweg 5  
A-6834 Übersaxen, Austria

