

# Determination der [männlich] nach Genitalien

Objekttyp: **Chapter**

Zeitschrift: **Contributions to Natural History : Scientific Papers from the Natural History Museum Bern**

Band (Jahr): - **(2020)**

Heft 38

PDF erstellt am: **30.06.2024**

## **Nutzungsbedingungen**

Die ETH-Bibliothek ist Anbieterin der digitalisierten Zeitschriften. Sie besitzt keine Urheberrechte an den Inhalten der Zeitschriften. Die Rechte liegen in der Regel bei den Herausgebern.

Die auf der Plattform e-periodica veröffentlichten Dokumente stehen für nicht-kommerzielle Zwecke in Lehre und Forschung sowie für die private Nutzung frei zur Verfügung. Einzelne Dateien oder Ausdrucke aus diesem Angebot können zusammen mit diesen Nutzungsbedingungen und den korrekten Herkunftsbezeichnungen weitergegeben werden.

Das Veröffentlichen von Bildern in Print- und Online-Publikationen ist nur mit vorheriger Genehmigung der Rechteinhaber erlaubt. Die systematische Speicherung von Teilen des elektronischen Angebots auf anderen Servern bedarf ebenfalls des schriftlichen Einverständnisses der Rechteinhaber.

## **Haftungsausschluss**

Alle Angaben erfolgen ohne Gewähr für Vollständigkeit oder Richtigkeit. Es wird keine Haftung übernommen für Schäden durch die Verwendung von Informationen aus diesem Online-Angebot oder durch das Fehlen von Informationen. Dies gilt auch für Inhalte Dritter, die über dieses Angebot zugänglich sind.

# Determination der ♂♂ nach Genitalien

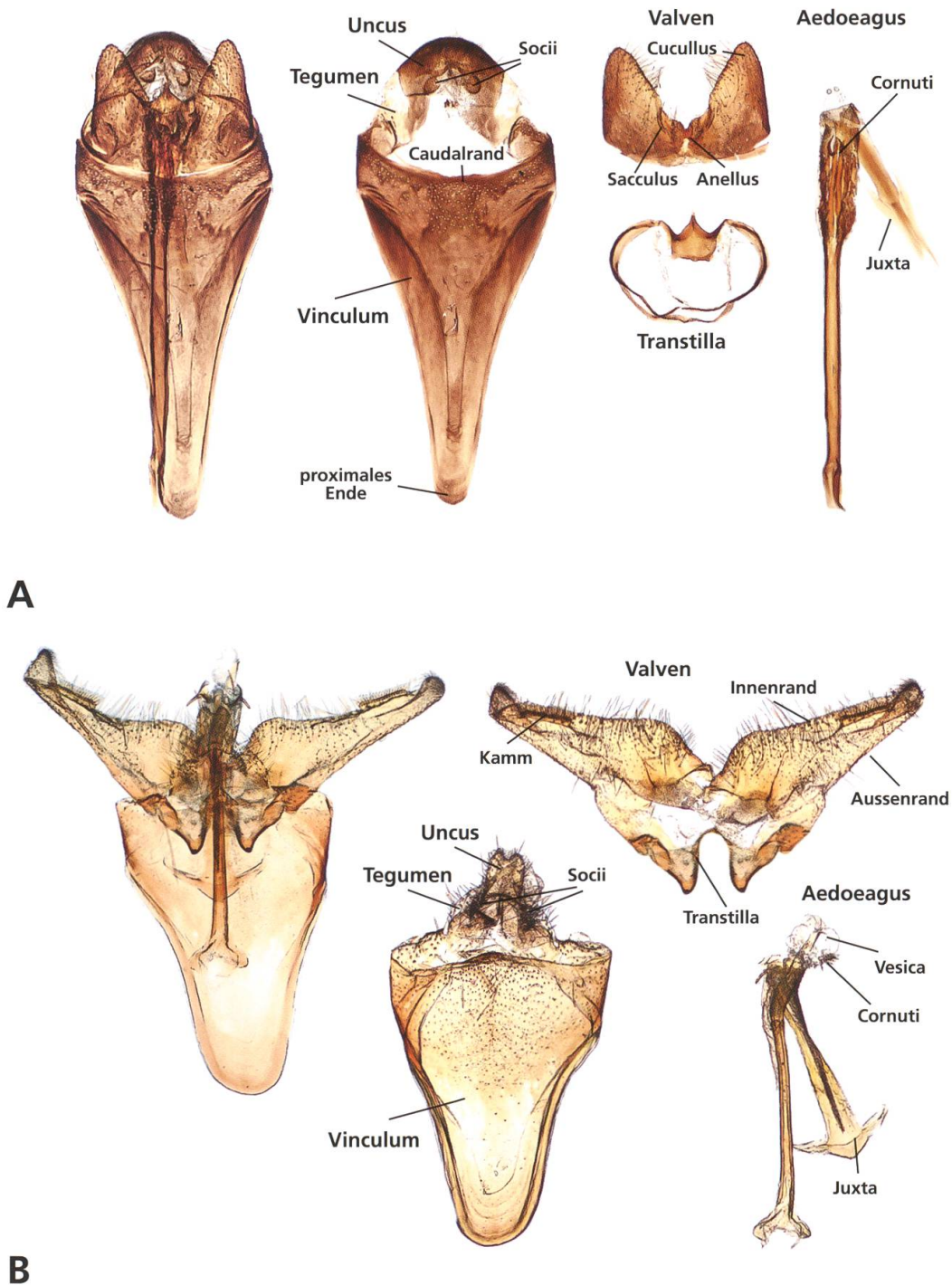
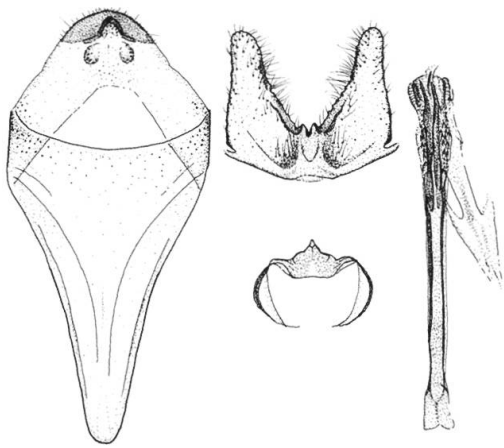


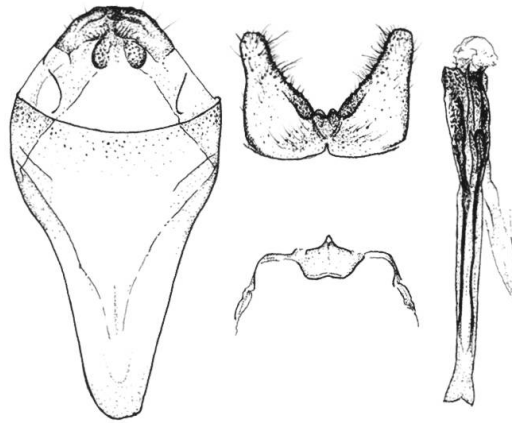
Abb. 278. Männliche Genitalien: Ventralansicht.

A *Nemophora congruella*<sup>5</sup>, La Neuveville BE, 20.5.2009.

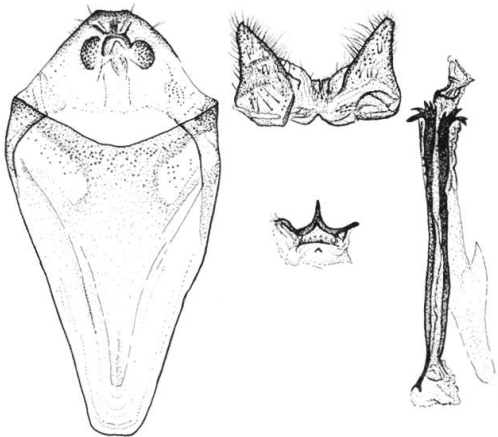
B *Nematopogon pilella*<sup>44</sup>, Ardez GR, 14.6.1921 (coll. Müller-Rutz, NMBS).



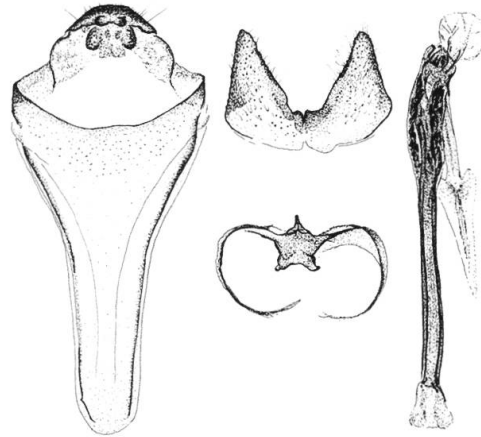
1 *Nemophora degeerella*



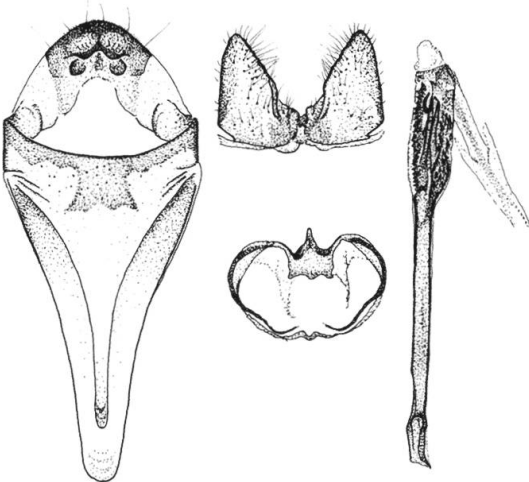
2 *Nemophora scopolii*



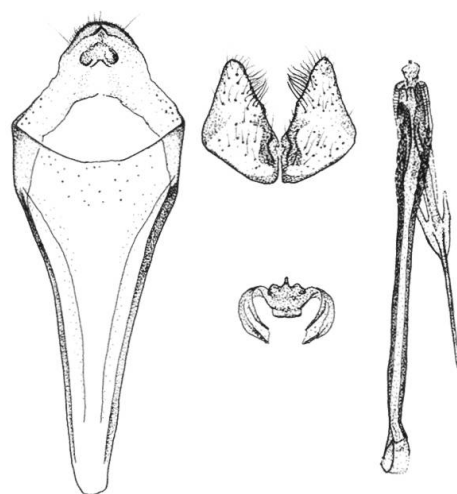
3 *Nemophora amatella*



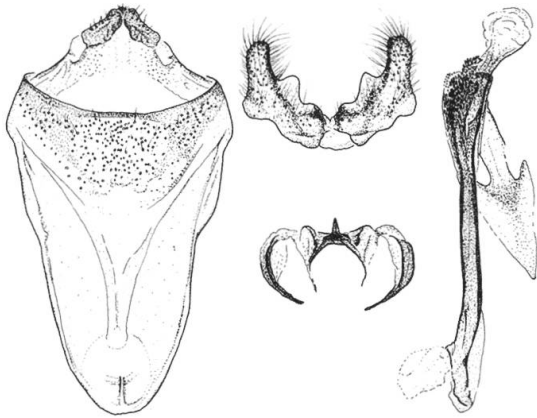
4 *Nemophora bellela*



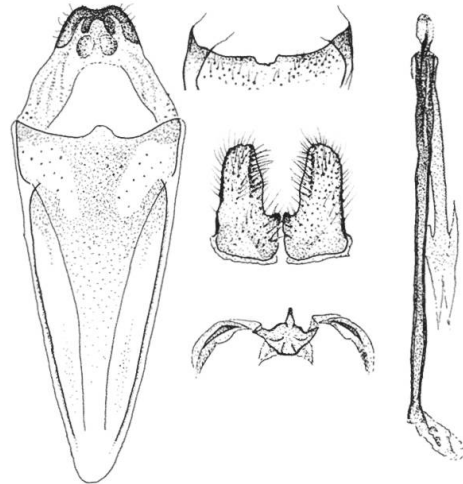
5 *Nemophora congruella*



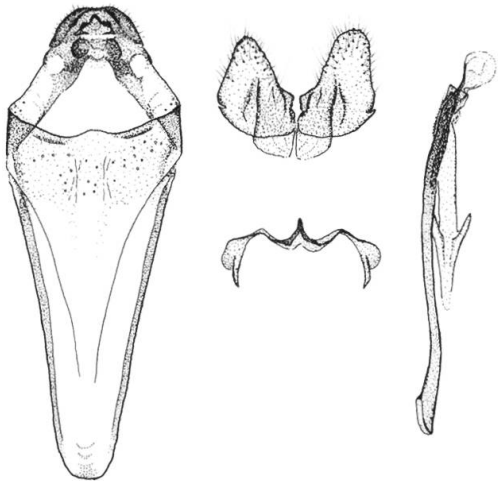
6 *Nemophora ochsenheimerella*



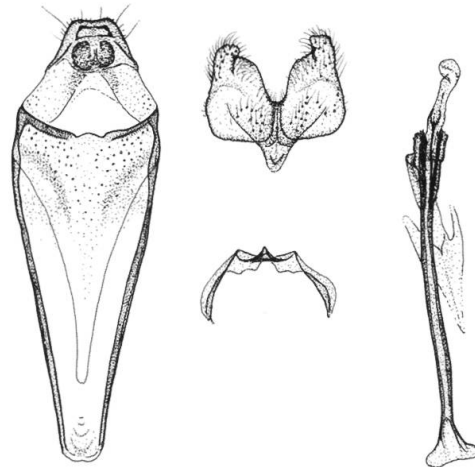
7 *Nemophora basella*



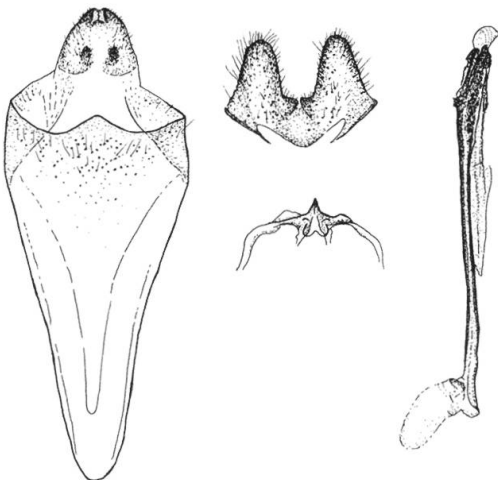
8 *Nemophora raddaella*



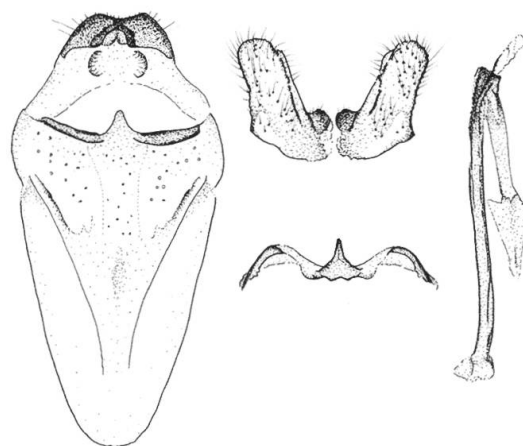
9 *Nemophora metallica*



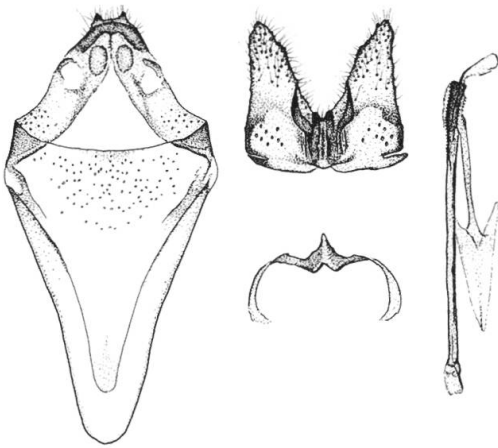
10 *Nemophora pfeifferella*



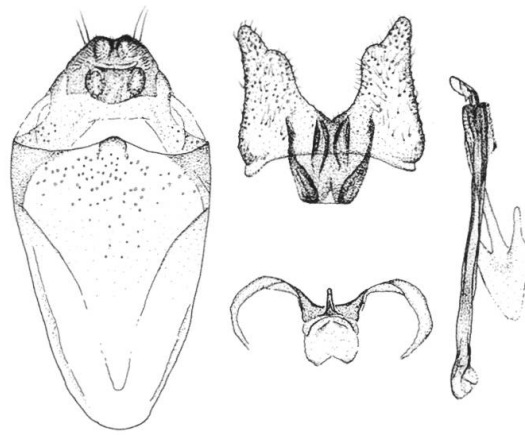
11 *Nemophora istrianelus*



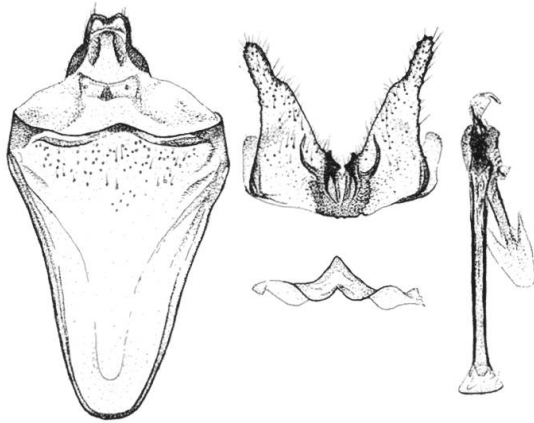
13 *Nemophora violellus*



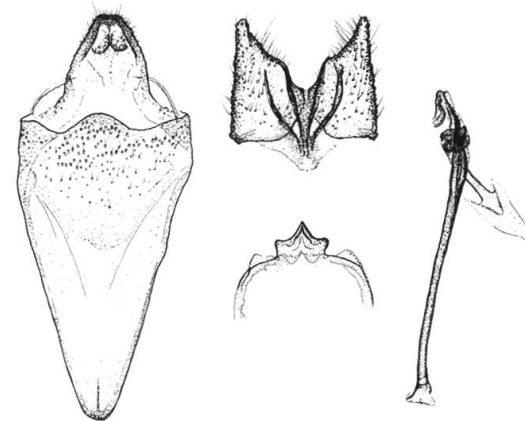
14 *Nemophora prodigellus*



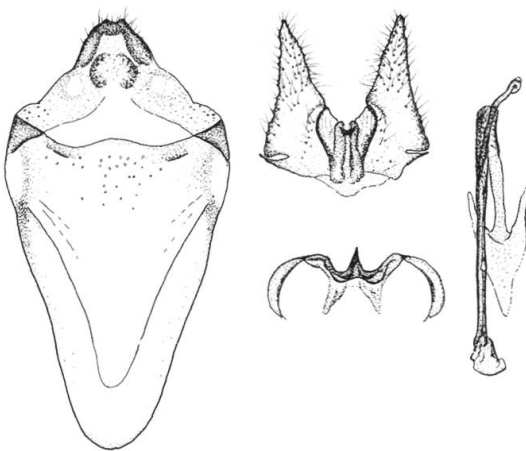
15 *Nemophora fasciella*



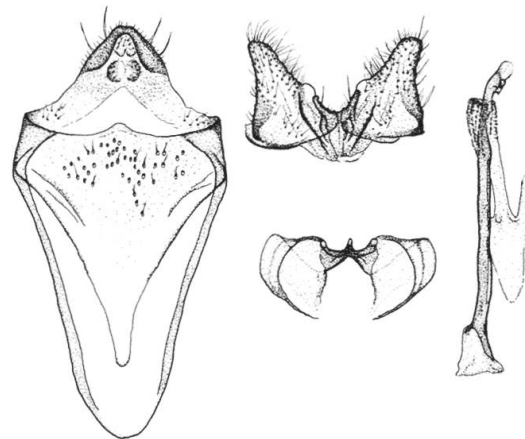
16 *Nemophora barbatellus*



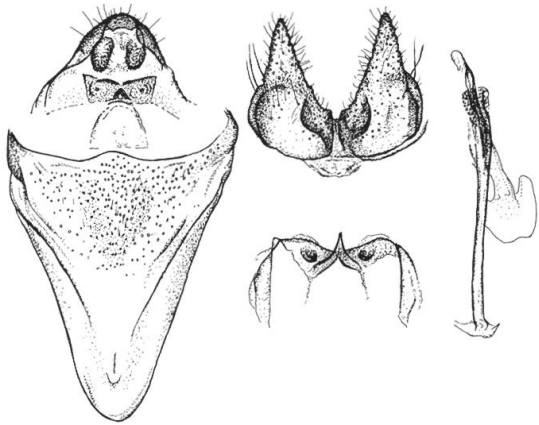
17 *Nemophora mollella*



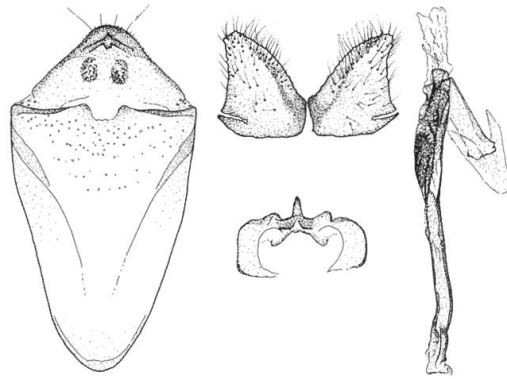
18 *Nemophora minimella*



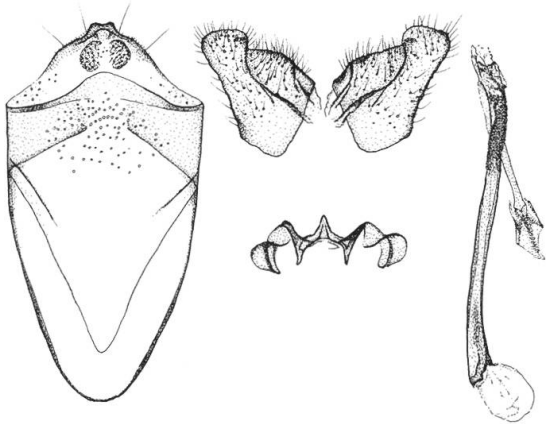
19 *Nemophora dumerilella*



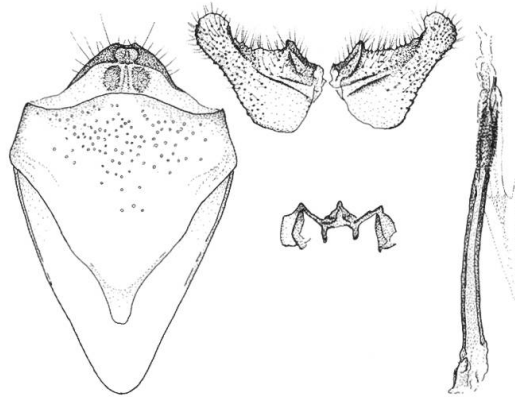
20 *Nemophora albiciliellus*



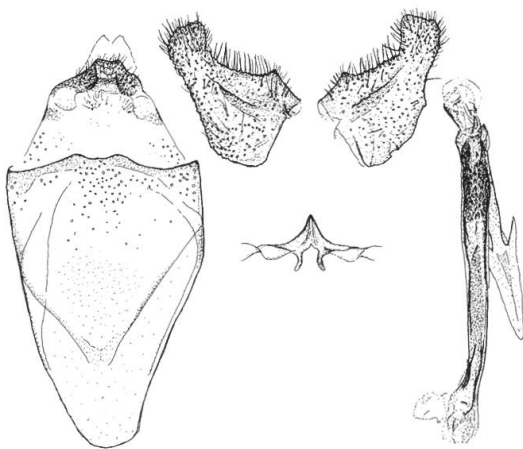
21 *Nemophora associatella*



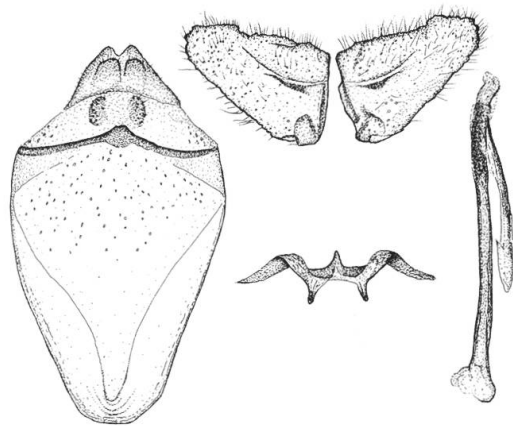
22 *Adela violella*



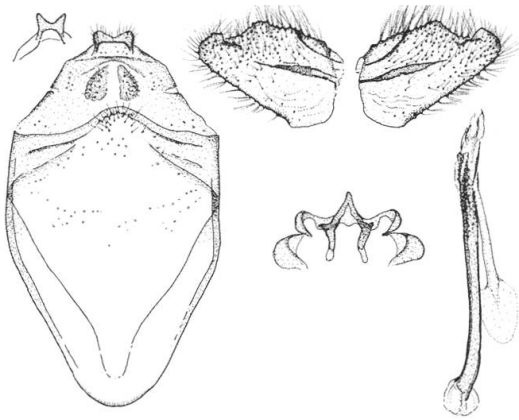
23 *Adela mazzolella*



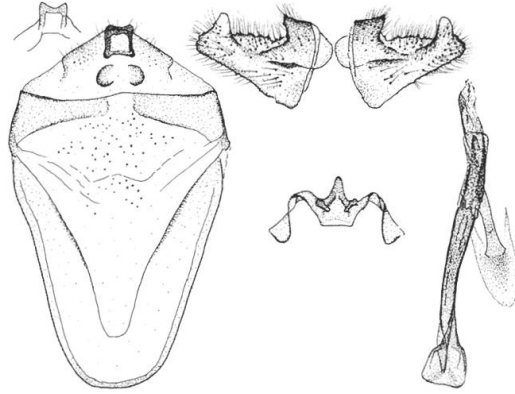
24 *Adela homalella*



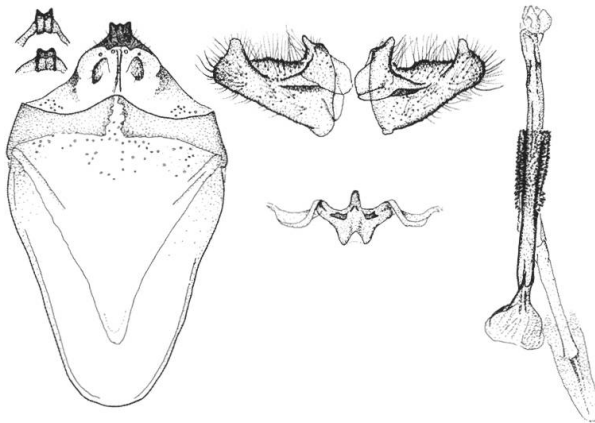
25 *Adela paludicolella*



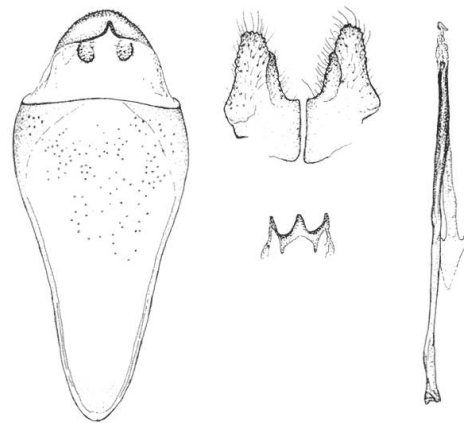
26 *Adela reaumurella*



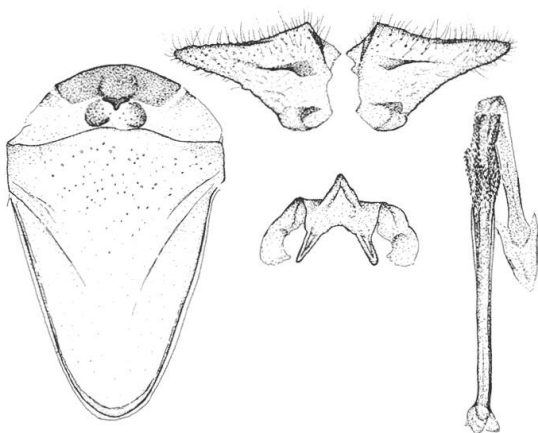
27 *Adela albicinctella*



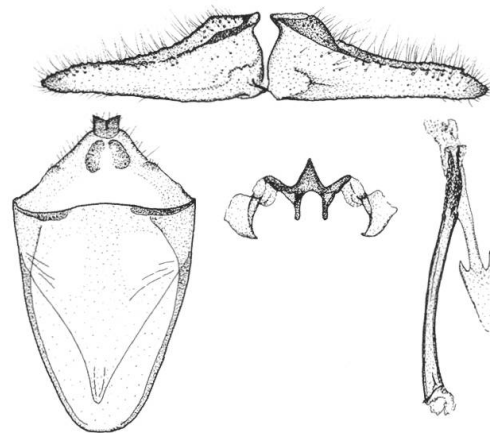
28 *Adela cuprella*



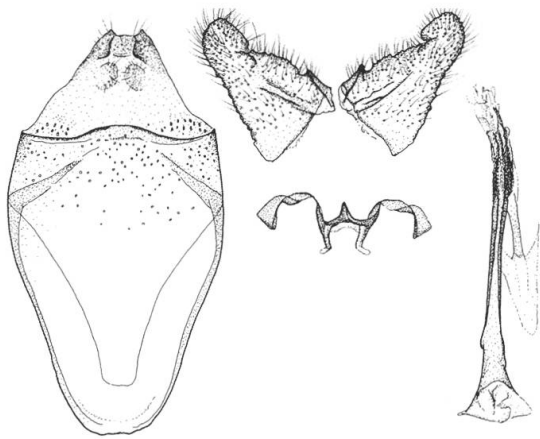
29 *Adela pantherella*



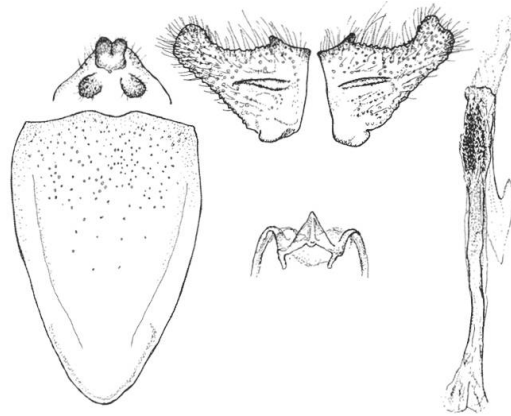
30 *Adela collicolella*



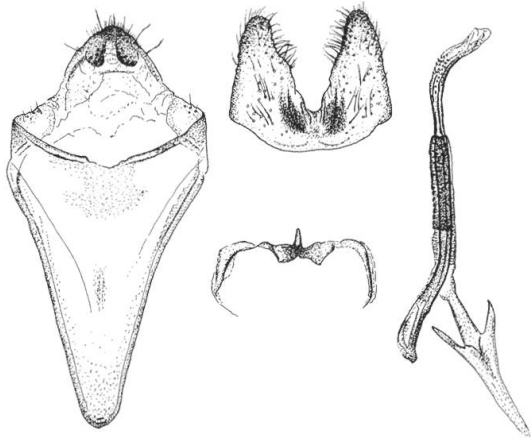
31 *Adela australis*



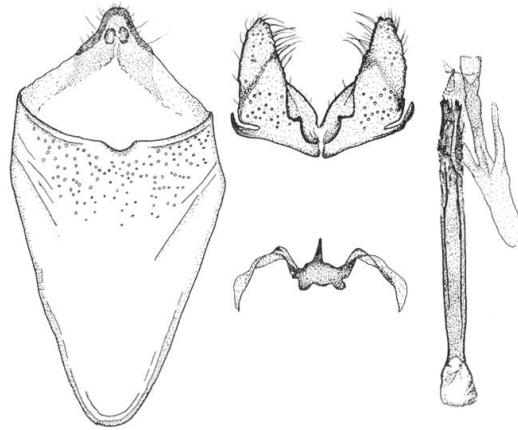
32 *Adela croesella*



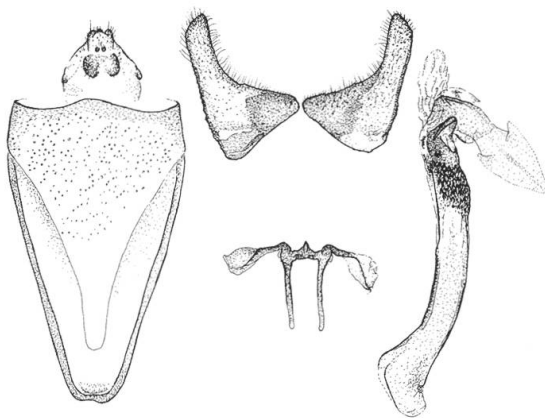
33 *Adela repetitella*



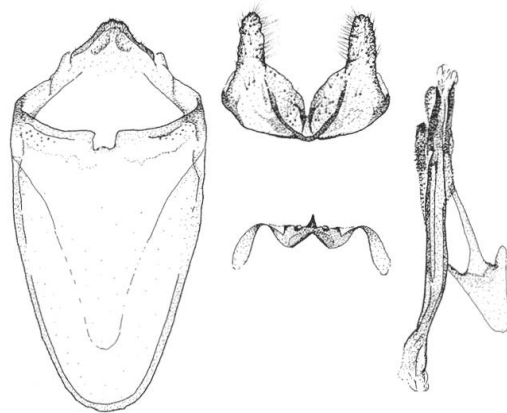
35 *Cauchas florella*



36 *Cauchas rufifrontella*

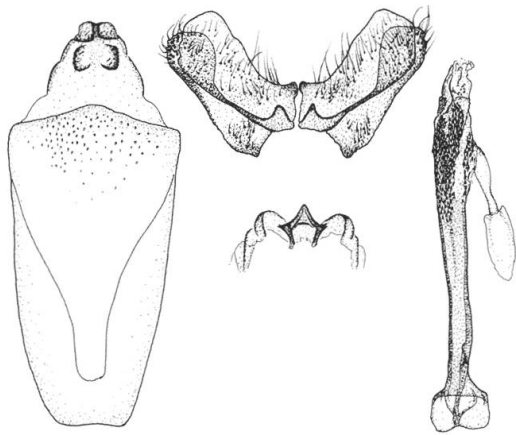


37 *Cauchas breviantennella*

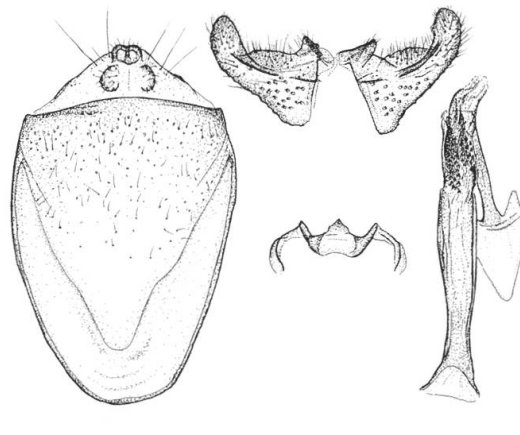


38 *Cauchas fibulella*

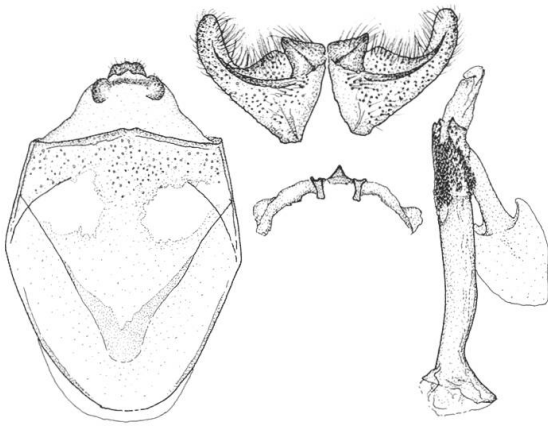




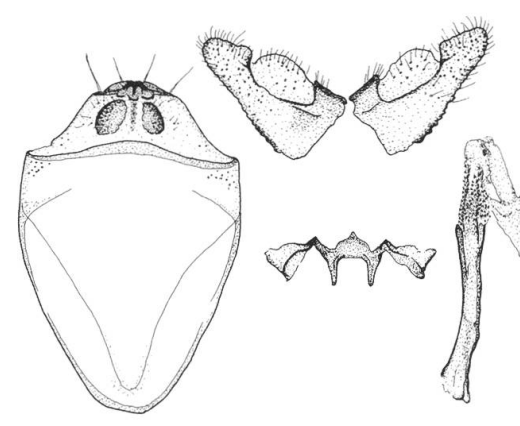
39 *Cauchas leucorerella*



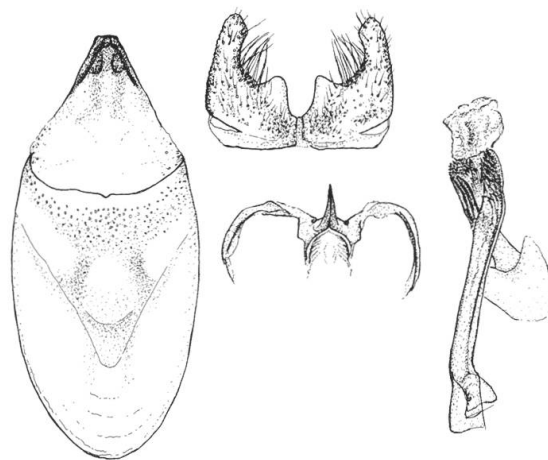
40 *Cauchas anatolica*



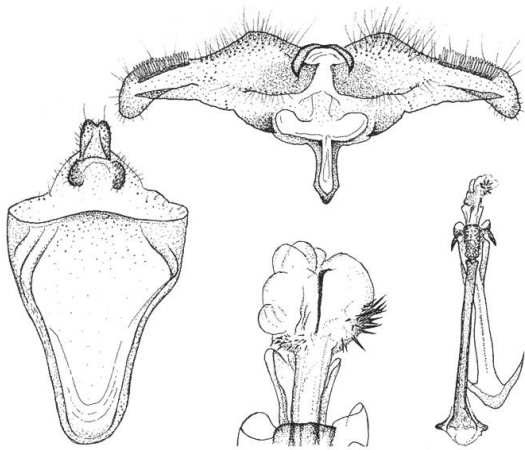
41 *Cauchas albi antennella*



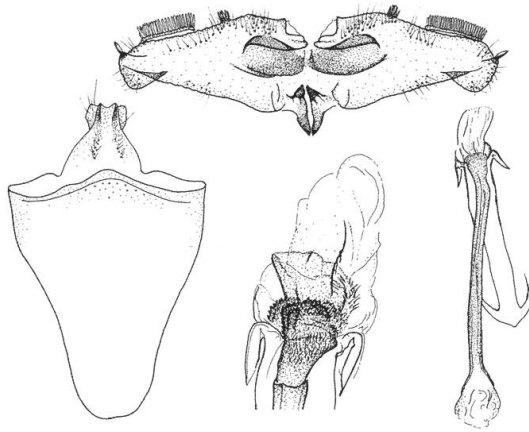
42 *Cauchas rufimitrella*



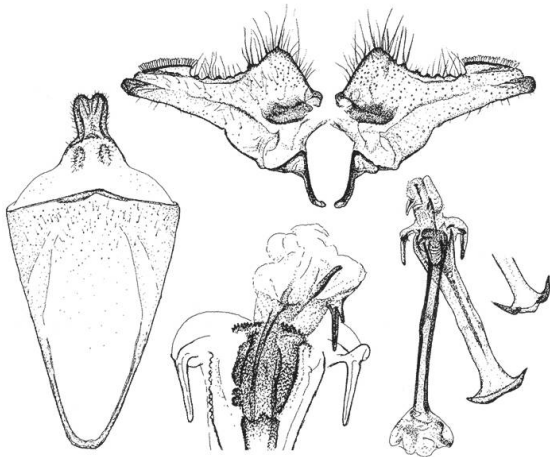
43 *Cauchas canalella*



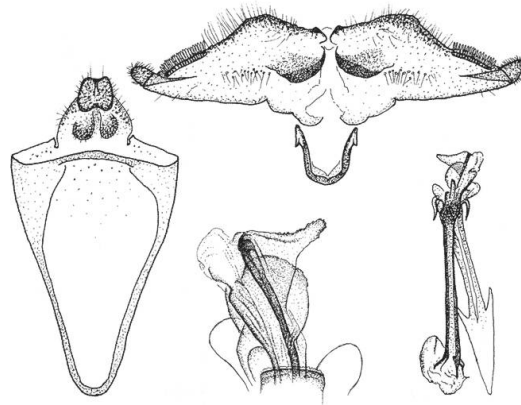
44 *Nematopogon pilella*



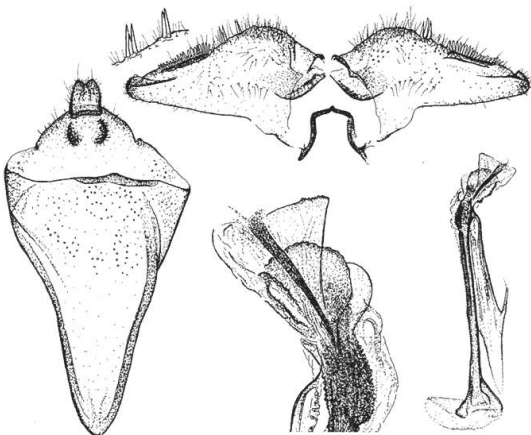
45 *Nematopogon schwarziellus*



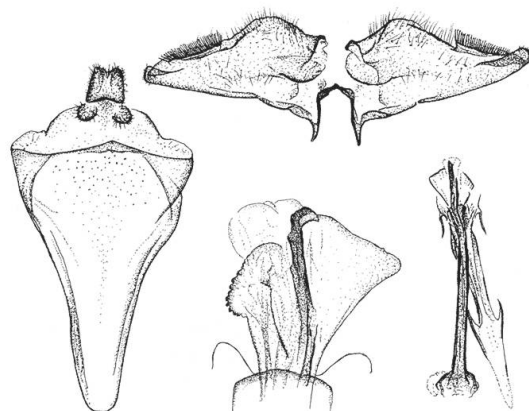
46 *Nematopogon magna*



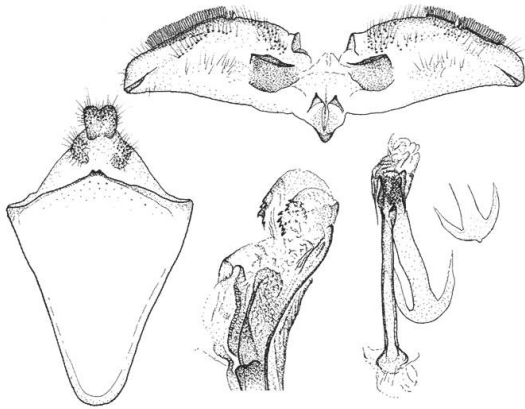
47 *Nematopogon adansoniella*



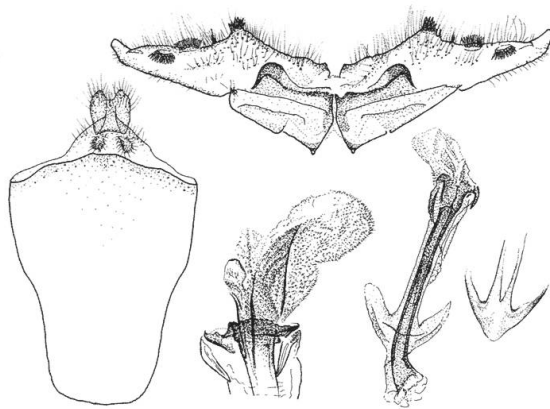
48 *Nematopogon prolai*



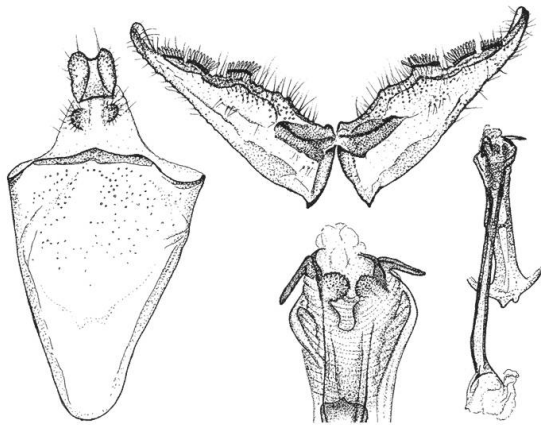
49 *Nematopogon garganellus*



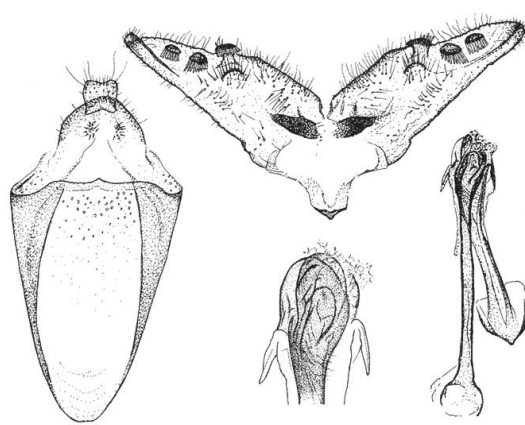
50 *Nematopogon metaxella*



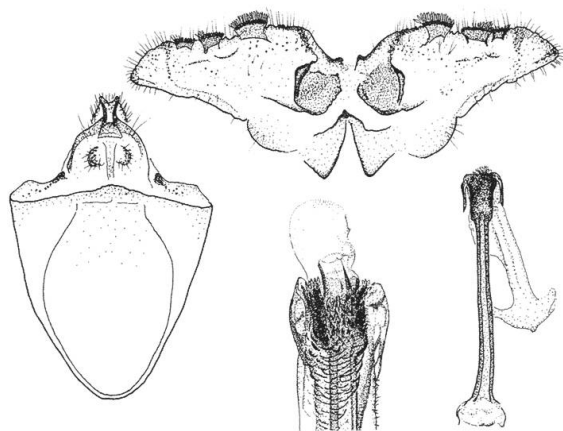
51 *Nematopogon swammerdamella*



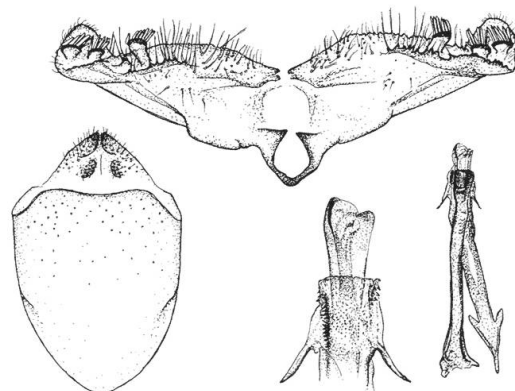
52 *Nematopogon argentellus*



53 *Nematopogon sericinellus*



54 *Nematopogon robertella*



55 *Nematopogon stenochlora*