

Zeitschrift: Eclogae Geologicae Helvetiae
Herausgeber: Schweizerische Geologische Gesellschaft
Band: 68 (1975)
Heft: 1

Artikel: The Lower Cretaceous of Caravaca (Spain) : berriasian calcareous nannoplankton of the Miravetes section (Subbetic Zone, prov. of Murcia)
Autor: [s.n.]
Anhang: Tafeln
DOI: <https://doi.org/10.5169/seals-164382>

Nutzungsbedingungen

Die ETH-Bibliothek ist die Anbieterin der digitalisierten Zeitschriften. Sie besitzt keine Urheberrechte an den Zeitschriften und ist nicht verantwortlich für deren Inhalte. Die Rechte liegen in der Regel bei den Herausgebern beziehungsweise den externen Rechteinhabern. [Siehe Rechtliche Hinweise.](#)

Conditions d'utilisation

L'ETH Library est le fournisseur des revues numérisées. Elle ne détient aucun droit d'auteur sur les revues et n'est pas responsable de leur contenu. En règle générale, les droits sont détenus par les éditeurs ou les détenteurs de droits externes. [Voir Informations légales.](#)

Terms of use

The ETH Library is the provider of the digitised journals. It does not own any copyrights to the journals and is not responsible for their content. The rights usually lie with the publishers or the external rights holders. [See Legal notice.](#)

Download PDF: 20.02.2025

ETH-Bibliothek Zürich, E-Periodica, <https://www.e-periodica.ch>

Plate I

- Fig. 1–4 *Broinsonia ? lata* (NOËL, 1969) NOËL, 1970 p. 154
- 1: Oblique view on the distal side
Miravetes; *privasensis*-zone, *C. elliptica*-subzone, All 70.90
Stereoscan micrograph 220/1, 8,070 ×
- 2: Same specimen as Fig. 1; oblique side view
Stereoscan micrograph 220/2, 8,070 ×
- 3: Oblique view on the distal side
Miravetes; *euxina*-zone, *C. alpina*-subzone, All 71.139
Stereoscan micrograph 178/3, 12,100 ×
- 4: Distal view
Miravetes; *privasensis*-zone, *C. elliptica*-subzone, All 70.90
Stereoscan micrograph 312/9, 10,770 ×
- Fig. 5–7 *Biscutum ellipticum* (GÓRKA, 1957) GRÜN, n. comb. p. 154
- 5: Cocosphere
Cehegin – Middle Ridge section; lower Barremian, All 68.47
Stereoscan micrograph 462/7, 8,070 ×
- 6: Distal view
Miravetes; *euxina*-zone, *C. alpina*-subzone, All 71.122
Stereoscan micrograph 291/2, 21,530 ×
- 7: Distal view
Cehegin–Middle Ridge section; Hauterivian, All 68.26
Transmission electronmicrograph 2002/69, 10,770 ×
- Fig. 8–10 *Bidiscus ignotus* (GÓRKA, 1957) HOFFMANN, 1970 p. 157
- 8: Cocosphere
Cehegin–Middle Ridge section; Hauterivian, All 68.25
Stereoscan micrograph 553/1, 6,500 ×
- 9: Distal view
Miravetes; *euxina*-zone, *C. elliptica*-subzone, All 71.166
Stereoscan micrograph 163/12, 16,100 ×
- 10: Proximal view
Miravetes; *euxina*-zone, *C. elliptica*-subzone, All 71.166
Stereoscan micrograph 164/12, 12,100 ×
- Fig. 11, 12 *Ellipsagelosphaera Britannica* (STRADNER, 1963) PERCH-NIELSEN, 1968 . . . p. 159
- 11: Cocosphere
Deepwell Nieuwerkerk 1 (Netherlands); lower Aptian, Str. 23
Stereoscan micrograph 381/4, 8,070 ×
- 12: Oblique view on the proximal side
Miravetes; *privasensis*-zone, *C. elliptica*-subzone, All 70.87
Stereoscan micrograph 169/7, 8,070 ×

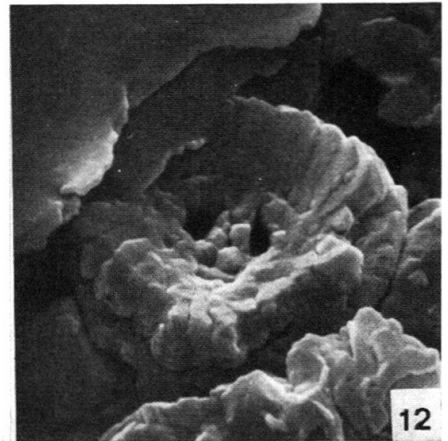
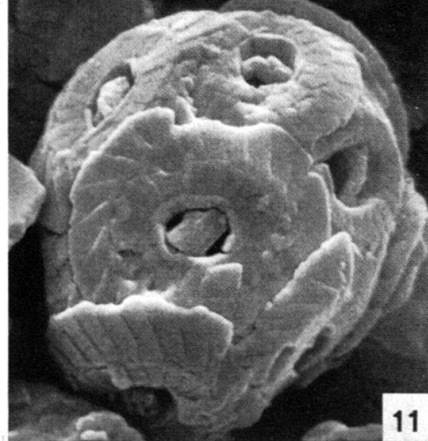
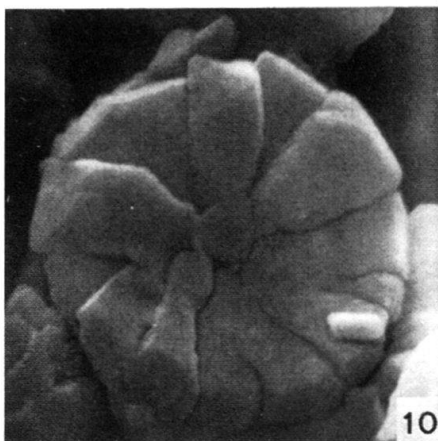
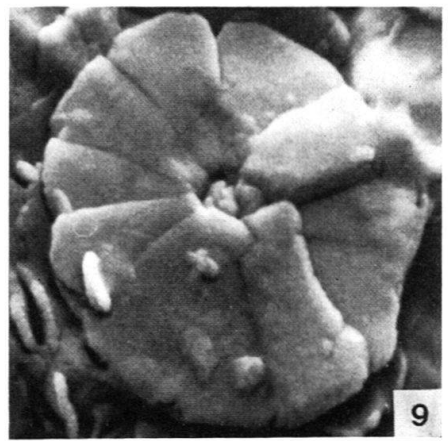
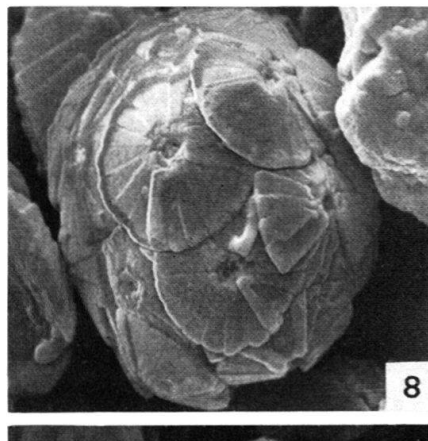
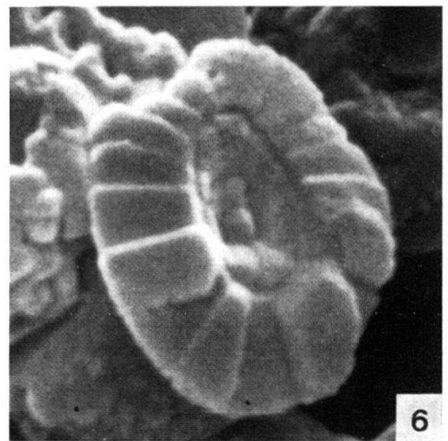
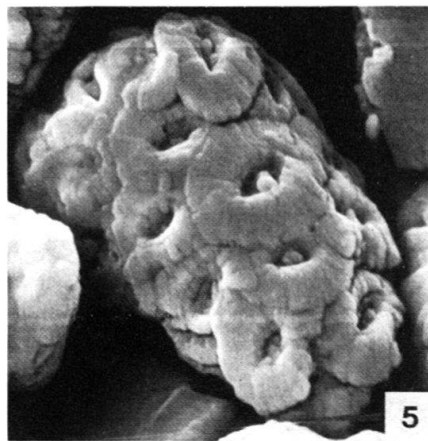
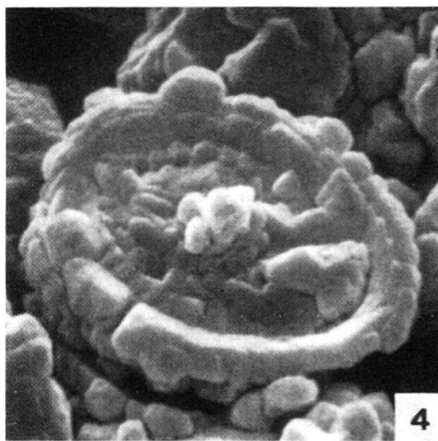
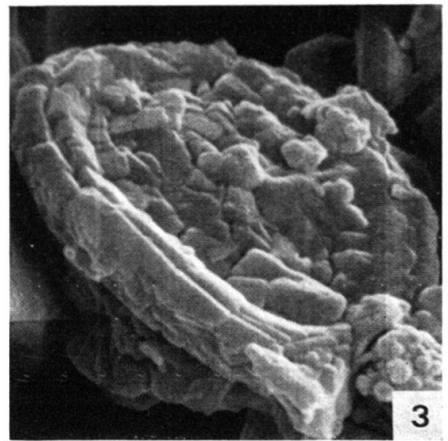
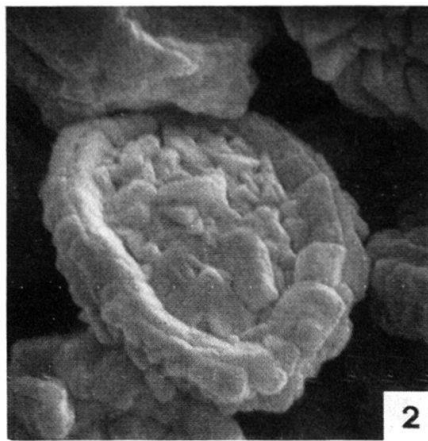
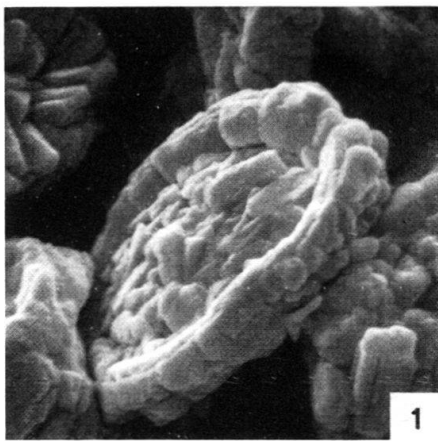


Plate II

- Fig. 1–4 *Ellipsagelosphaera britannica* (STRADNER, 1963) PERCH-NIELSEN, 1968 . . . p. 159
1: Distal view
Miravetes; *privatensis*-zone, *C. elliptica*-subzone, All 70.90
Stereoscan micrograph 314/3, 8,070 ×
2: Distal view
Miravetes; *privasensis*-zone, *C. elliptica*-subzone, All 71.159
Stereoscan micrograph, 215/12, 12,100 ×
3: Oblique view on the proximal side
Miravetes; *privasensis*-zone, *C. elliptica*-subzone, All 71.161 ×
Stereoscan micrograph 217/5, 8,070 ×
4: Oblique view on the distal side
Miravetes; *privasensis*-zone, *C. elliptica*-subzone, All 71.161
Stereoscan micrograph 218/7, 8,070 ×
- Fig. 5, 6 *Ellipsagelosphaera keftalrempti* GRÜN n. sp. p. 161
5: Distal side
Deepwell Tubbergen 4 (Netherlands); upper Hauterivian, Str. 26
Stereoscan micrograph 382/2, 9,700 ×
6: Oblique view on the distal side
Miravetes; *privasensis*-zone, *C. elliptica*-subzone, All 71.159
Holotype: Stereoscan micrograph 216/1, 12,100 ×
- Fig. 7–9 *Ellipsagelosphaera ovata* (BUKRY, 1969) BLACK, 1973 p. 160
7: Distal view
Cehegin–Big Tree section; lower Barremian, All 69.23
Transmission electronmicrograph 2066/69, 9,400 ×
8: Oblique view on the distal side
Miravetes; *jacobi*-zone, *Cr. intermedia*-subzone, All 71.109
Stereoscan micrograph 96/2, 16,100 ×
9: Distal view
Cehegin–Middle Ridge section; Hauterivian, All 68.26
Transmission electronmicrograph 2794/69, 9,400 ×
- Fig. 10 *Watznaueria barnesae* (BLACK, 1959) PERCH-NIELSEN, 1968 p. 162
Coccosphere
Miravetes; *euxina*-zone, *C. elliptica*-subzone, All 71.166
Stereoscan micrograph 223/5, 8,070 ×
- Fig. 11, 12 *Watznaueria biporta* BUKRY, 1969 p. 164
11: Distal view
Miravetes; *privasensis*-zone, *C. elliptica*-subzone, All 71.152
Stereoscan micrograph 297/2, 8,070 ×
12: Oblique view on the distal side
Miravetes; *privasensis*-zone, *C. elliptica*-subzone, All 71.172
Stereoscan micrograph 428/12, 6,100 ×

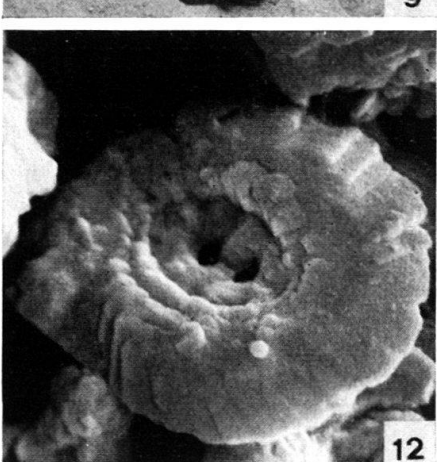
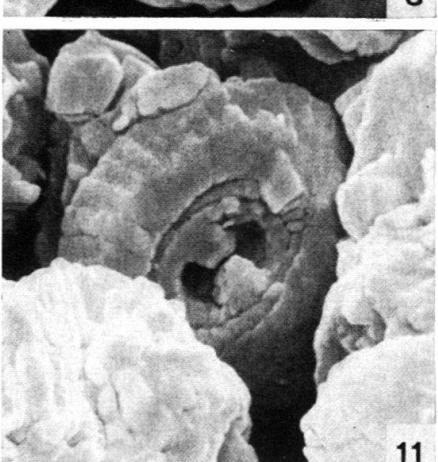
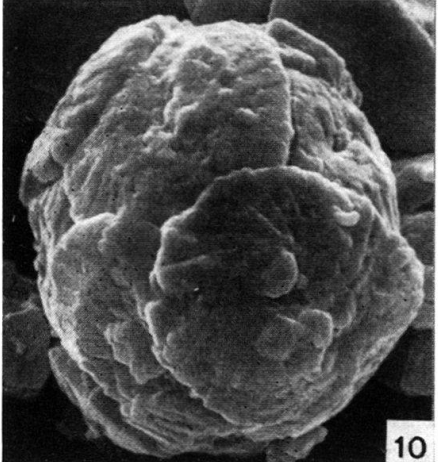
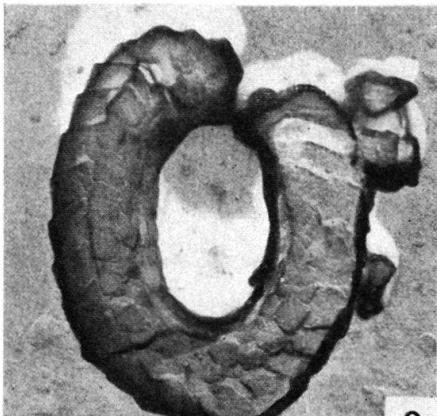
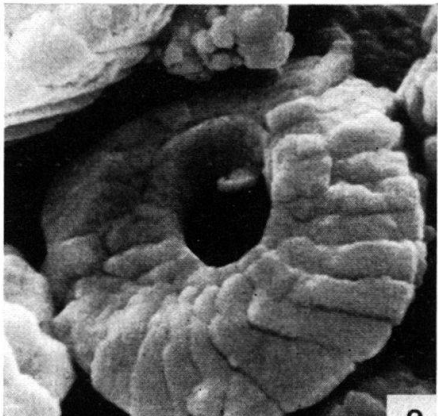
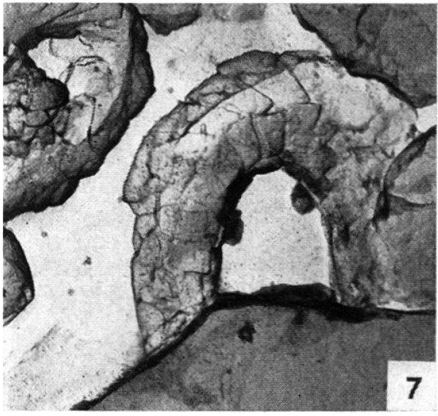
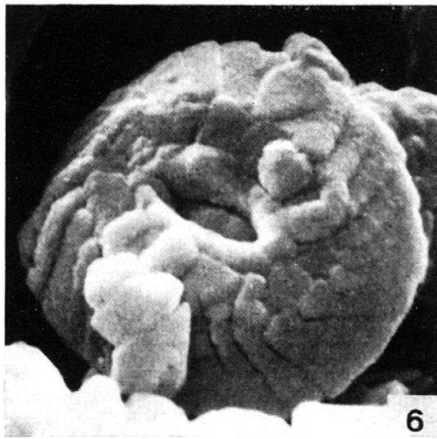
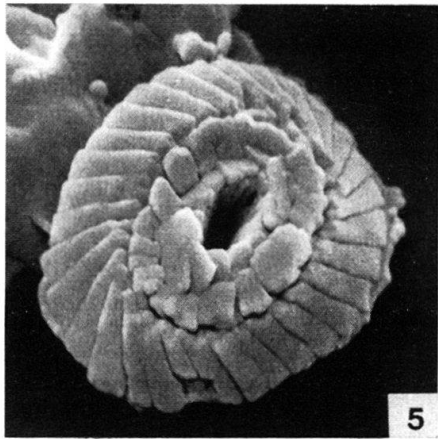
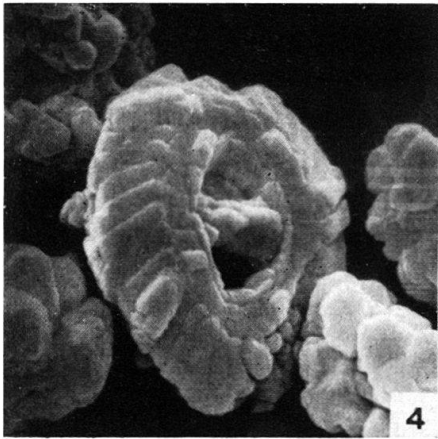
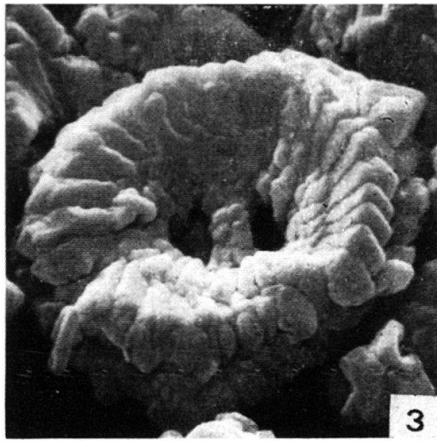
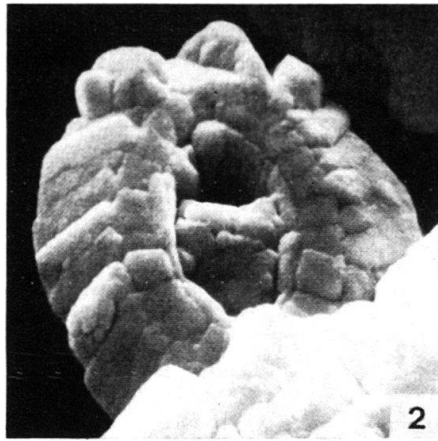
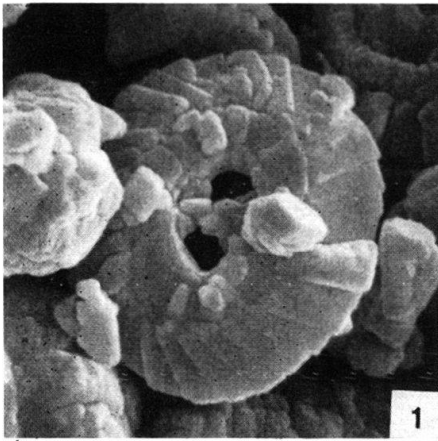


Plate III

- Fig. 1–3 *Cyclagelosphaera margereli* NOËL, 1965 p. 165
1: Cocosphere
Schacht Konrad I, 673 m, Salzgitter (Germany); lower Barremian.
Stereoscan micrograph 60/7, 8,070 ×
2: Cocosphere
Miravetes; *privasensis*-zone, *C. elliptica*-subzone, All 71.180
Stereoscan micrograph 315/5, 8,070 ×
3: Oblique view on the distal side
Miravetes; *jacobi*-zone, *Cr. intermedia*-subzone, All 71.103
Stereoscan micrograph 211/4, 12,100 ×
- Fig. 4–6 *Cyclagelosphaera rotaclypeata* BUKRY, 1969 p. 167
4: Oblique view on the distal side
Miravetes; *privasensis*-zone, *C. elliptica*-subzone, All 70.90
Stereoscan micrograph 219/11, 10,770 ×
5: Same specimen as Fig. 4; distal view
Stereoscan micrograph 219/10, 10,770 ×
6: Oblique view on the distal side
Miravetes; *jacobi*-zone, *C. alpina*-subzone, All 71.118
Stereoscan micrograph 118/7, 8,070 ×
- Fig. 7–9 *Podorhabdus dietzmanni* (REINHARDT, 1965) REINHARDT, 1967 p. 168
7: Distal view
Miravetes; *picteti-malbosi*-zone, *Cps. simplex*-subzone, All 71.197
Stereoscan micrograph 323/5, 10,770 ×
8: Oblique view on the distal side
Miravetes; *privasensis*-zone, *C. elliptica*-subzone, All 71.183
Stereoscan micrograph 181/2, 101,00 ×
9: Same specimen as Fig. 8; distal view
Stereoscan micrograph 181/3, 10,100 ×
- Fig. 10 *Tetrapodorhabdus granulatus* (REINHARDT, 1965) GRÜN n. comb. p. 170
Oblique view on the distal side
Miravetes; *privasensis*-zone, *C. elliptica*-subzone, All 70.90
Stereoscan micrograph 314/2, 8,070 ×
- Fig. 12, 13 *Tetrapodorhabdus coptensis* BLACK, 1971 p. 169
12: Oblique view on the distal side
Miravetes; *privasensis*-zone, *C. elliptica*-subzone, All 70.90
Stereoscan micrograph 220/3, 12,100 ×
13: Proximal view
Deepwell Nieuwerkerk 1 (Nederlands); lower Aptian, Str. 23
Stereoscan micrograph 381/9, 12,900 ×

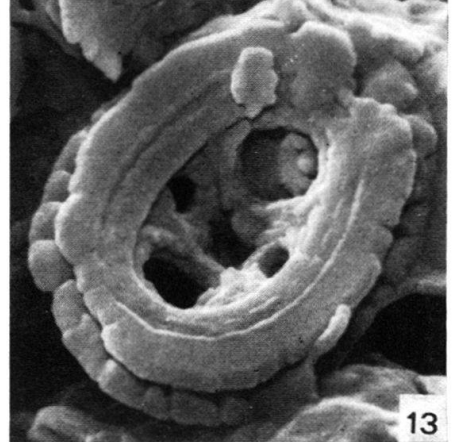
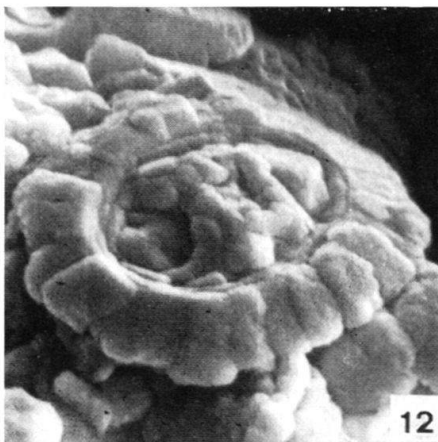
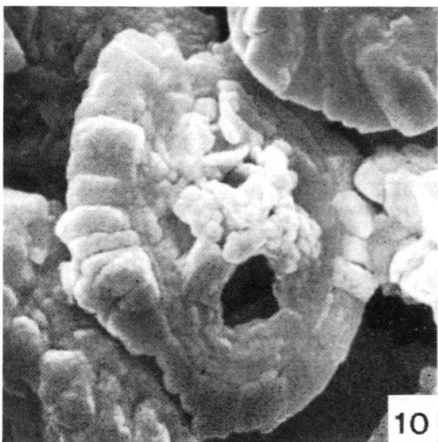
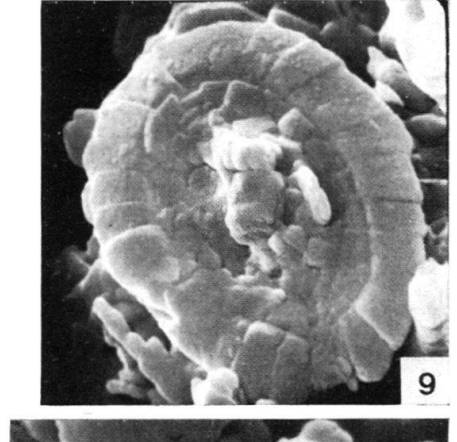
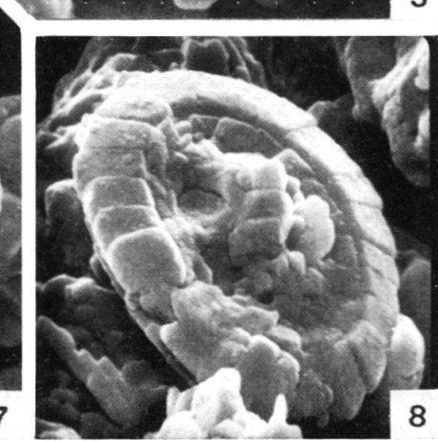
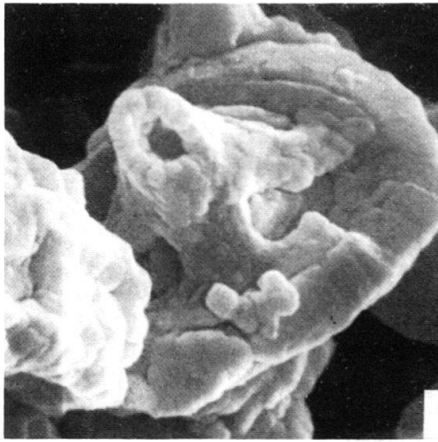
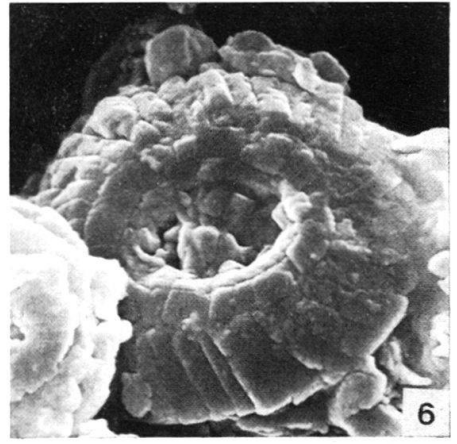
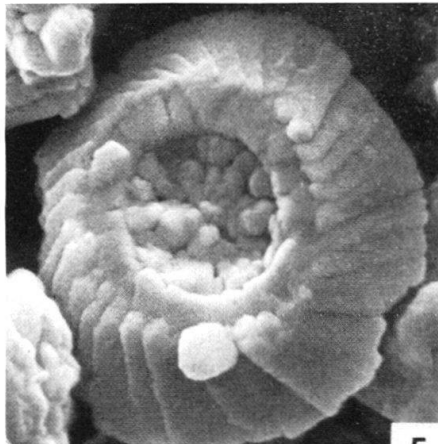
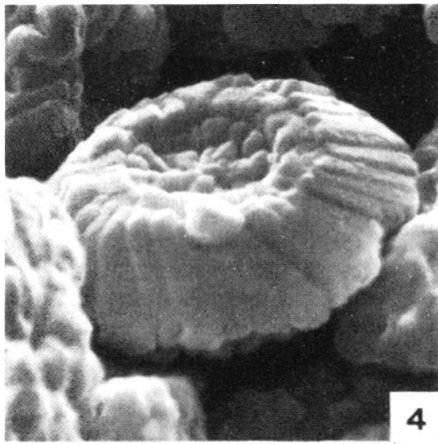
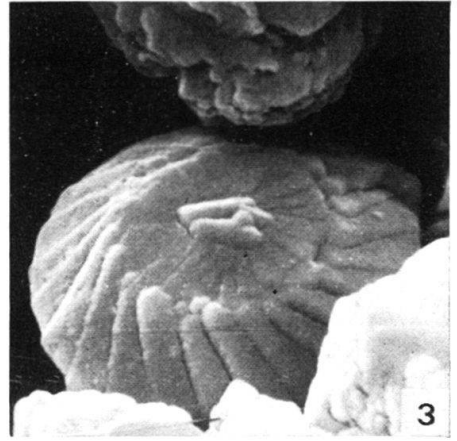
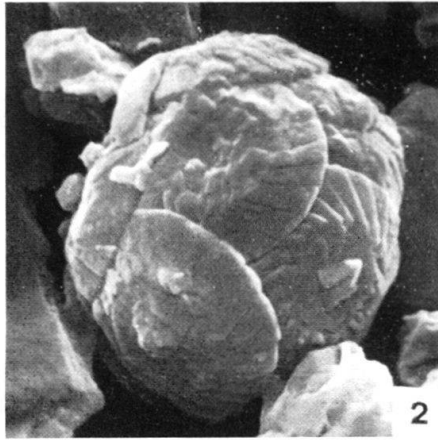
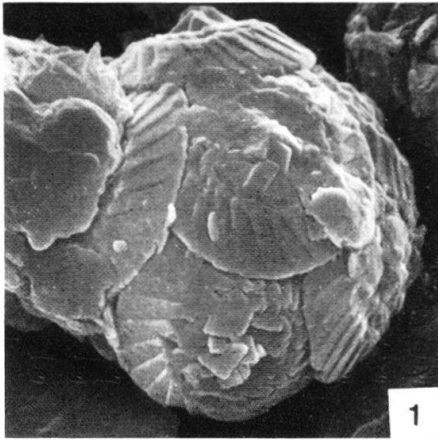


Plate IV

- Fig. 1–3 *Retecapsa angustiforata* BLACK, 1971 p. 173
1: Distal view
Miravetes; *privasensis*-zone, *C. elliptica*-subzone, All 71.182
Stereoscan micrograph 182/2, 8,070 ×
2: Oblique view on the distal side
Miravetes; *privasensis*-zone, *C. elliptica*-subzone, All 71.161
Stereoscan micrograph 217/8, 8,070 ×
3: Oblique view on the distal side
Miravetes; *privasensis*-zone, *C. elliptica*-subzone, All 70.88
Stereoscan micrograph 169/4, 8,070 ×
- Fig. 4–6 *Retecapsa crenulata* (BRAMLETTE & MARTINI, 1964) GRÜN, n. comb. p. 175
4: Oblique view on the distal side
Miravetes; *picteti-malbosii*-zone, *Cps. simplex*-subzone, All 71. 197
Stereoscan micrograph 318/6, 10,770 ×
5: Oblique view on the distal side
Lower Chalk, Dunstable (GB); Cenomanian
Stereoscan micrograph 262/9, 8,070 ×
6: Proximal view
Deepwell Nieuwerkerk 1 (Netherlands); lower Aptian, Str. 23
Stereoscan micrograph 380/10, 9,700 ×
- Fig. 7, 8 *Speetonia colligata* BLACK, 1971 p. 178
7: Proximal view
Cehegin–Middle Ridge section; lower Valanginian, All 69.69
Stereoscan micrograph 462/12, 8,070 ×
8: Distal view
Cehegin–Middle Ridge section; Valanginian, All 69.76
Stereoscan micrograph 468/2, 8,070 ×
- Fig. 9–12 *Cruciellipsis cuvillieri* (MANIVIT, 1966) THIERSTEIN, 1971. p. 179
9: Oblique view on the distal side
Miravetes; *picteti-malbosii*-zone, *Cps. simplex*-subzone, All 71.203
Stereoscan micrograph 233/5, 8,070 ×
10: Same specimen as Fig. 9; oblique view on the distal side
Stereoscan micrograph 233/4, 8,070 ×
11: Distal view
Cehegin–Middle Ridge section; upper Hauterivian, All 68.35
Stereoscan micrograph 459/10, 5,400 ×
12: Proximal view
Cehegin–Middle Ridge section; Hauterivian, All 68.25
Stereoscan micrograph 552/10, 8,070 ×

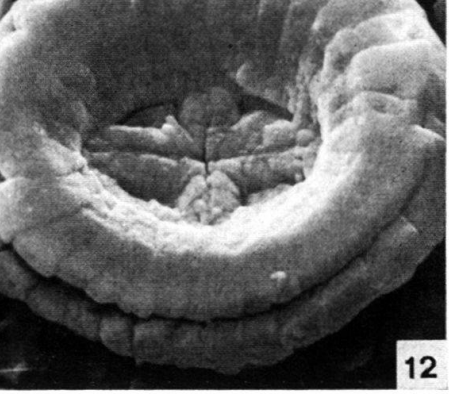
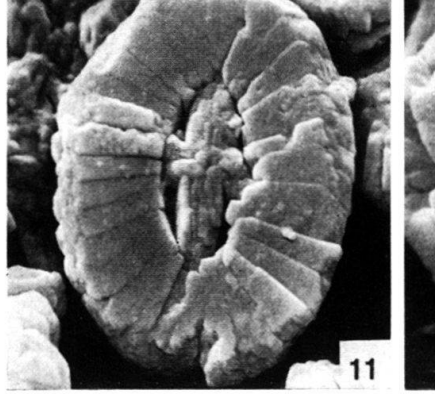
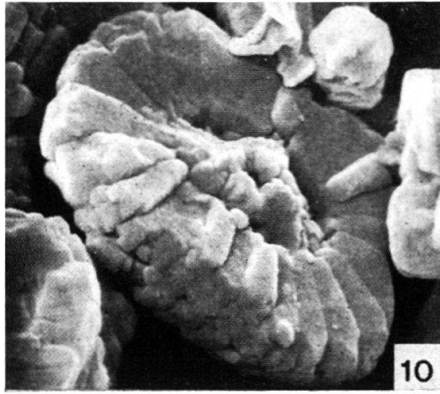
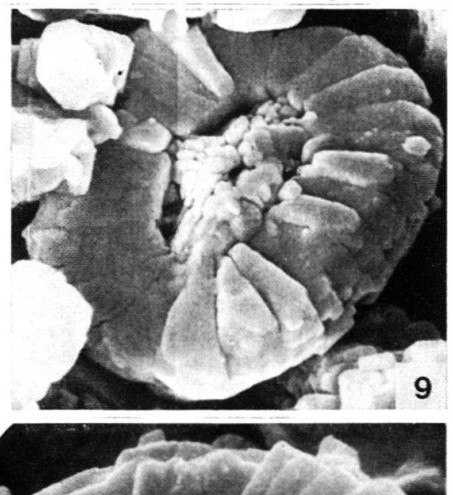
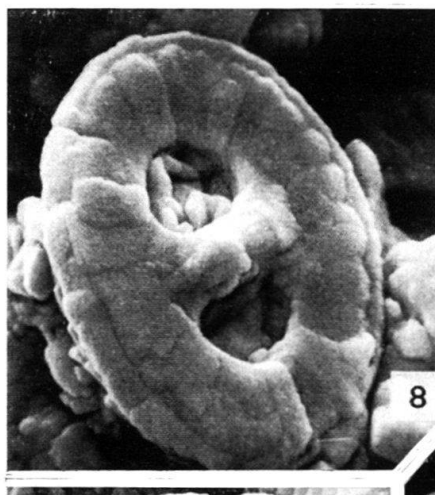
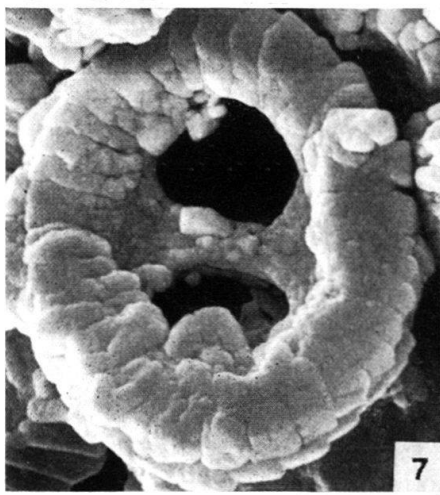
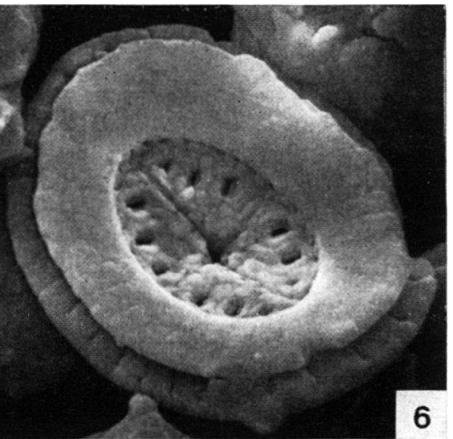
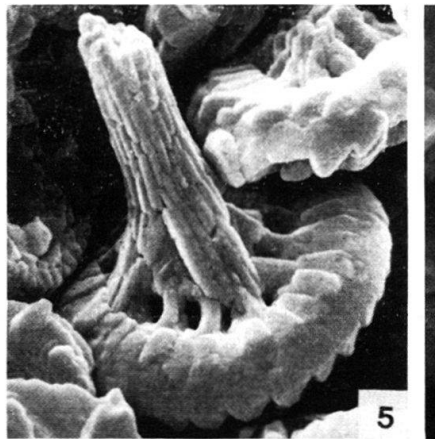
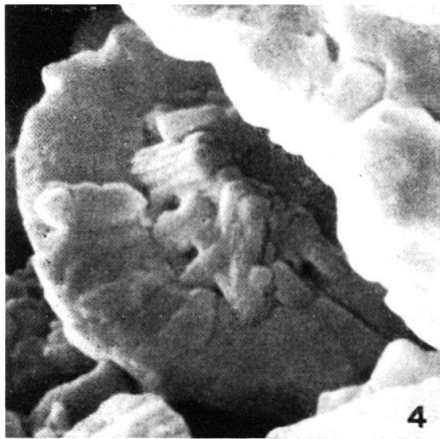
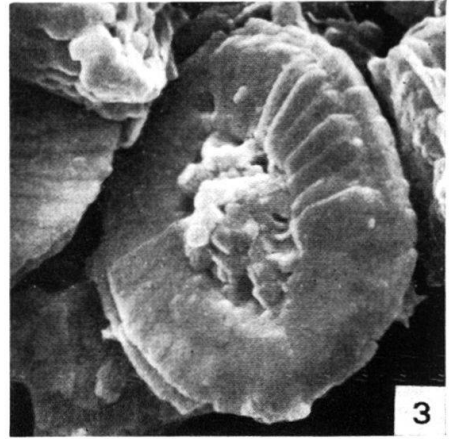
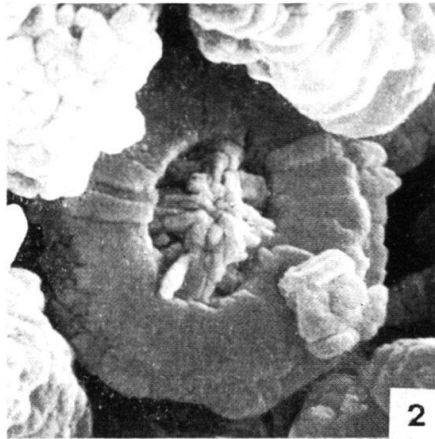
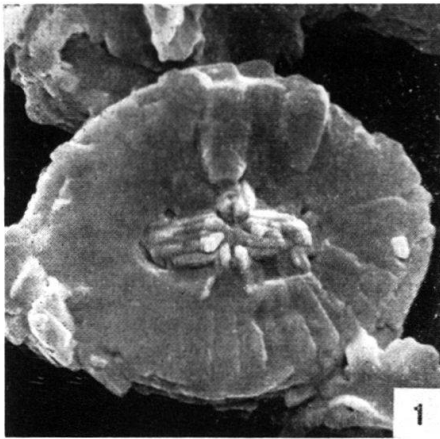


Plate V

- Fig. 1–4 *Microstaurus chiastius* (WORSLEY, 1971) GRÜN, n. comb. p. 181
- 1: Cocosphere, slightly destroyed
Miravetes; *privasensis*-zone, *C. elliptica*-subzone, All 70.88
Stereoscan micrograph 294/10, 8,070 ×
- 2: Oblique view on the distal side
Miravetes; *privasensis*-zone, *C. elliptica*-subzone, All 71.184
Stereoscan micrograph 317/7, 10,770 ×
- 3: Distal view
Miravetes; *euxina*-zone, *C. elliptica*-subzone, All 71.166
Stereoscan micrograph 167/7, 12,100 ×
- 4: Lateral view
Miravetes; *privasensis*-zone, *C. elliptica*-subzone, All 71.159
Stereoscan micrograph 216/8, 12,100 ×
- Fig. 5–10 *Microstaurus* sp 32 p. 182
- 5: Distal view
Miravetes; *euxina*-zone, *C. alpina*-subzone, All 71.122
Stereoscan micrograph 266/1, 8,070 ×
- 6: Same specimen as Fig. 5; lateral view
Stereoscan micrograph 265/12, 8,070 ×
- 7: Oblique view on the distal side
Miravetes; *euxina*-zone, *C. alpina*-subzone, All 71.122
Stereoscan micrograph 291/7, 8,070 ×
- 8: Same specimen as Fig. 7; lateral view
Stereoscan micrograph 291/6, 8,070 ×
- 9: Oblique view on the distal side
Miravetes; *privasensis*-zone, *C. elliptica*-subzone, All 70.88
Stereoscan micrograph 294/12, 8,070 ×
- 10: Same specimen as Fig. 9; lateral view
Stereoscan micrograph 294/11, 8,070 ×
- Fig. 11, 12 *Microstaurus* ? sp. 36 p. 182
- 11: Oblique view on the distal side
Miravetes; *jacobi*-zone, *Cr. intermedia*-subzone, All 71.109
Stereoscan micrograph 212/2, 10,770 ×
- 12: Oblique view on the distal side
Miravetes; *euxina*-zone, *C. alpina*-subzone, All 71.141
Stereoscan micrograph 178/11, 10,770 ×

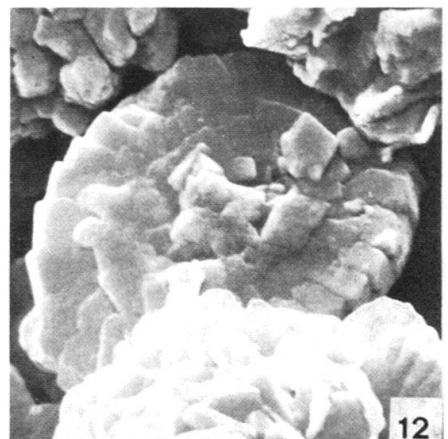
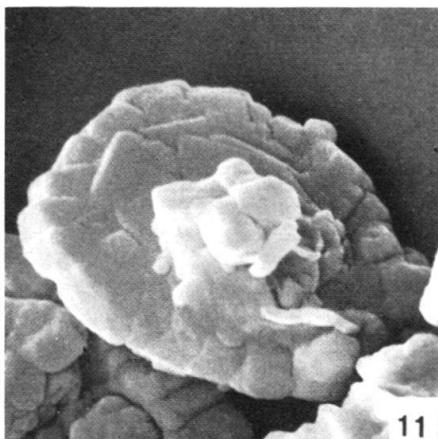
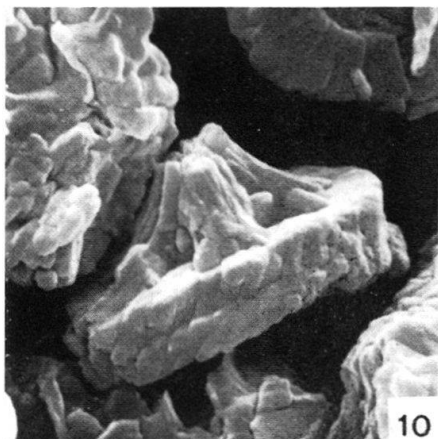
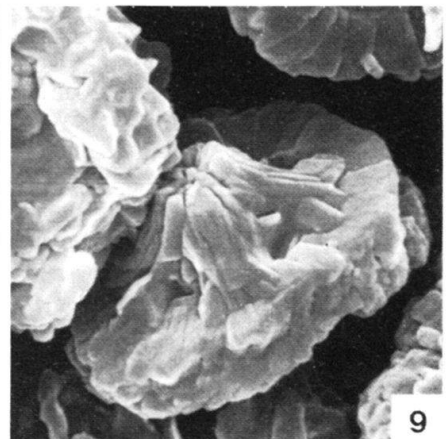
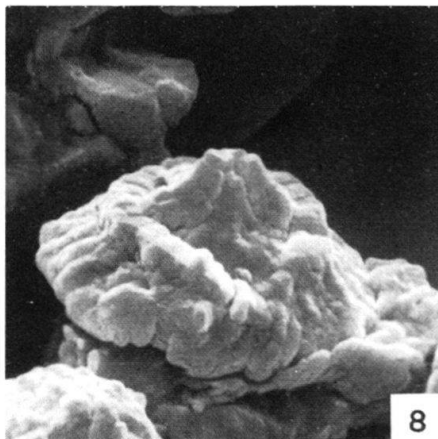
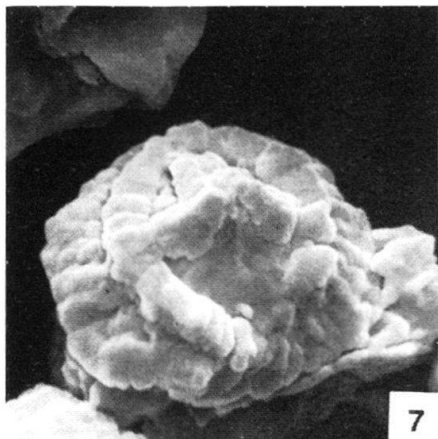
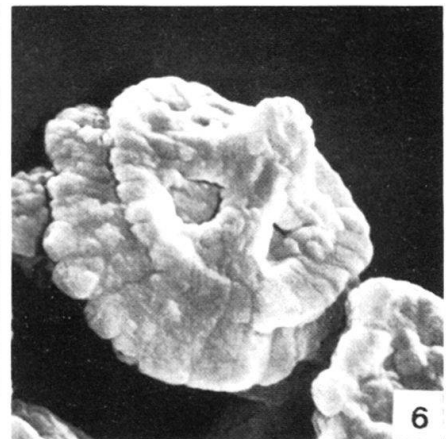
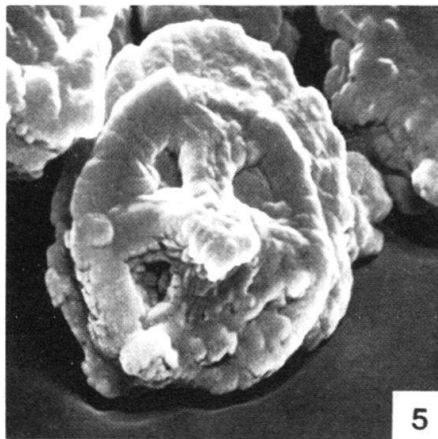
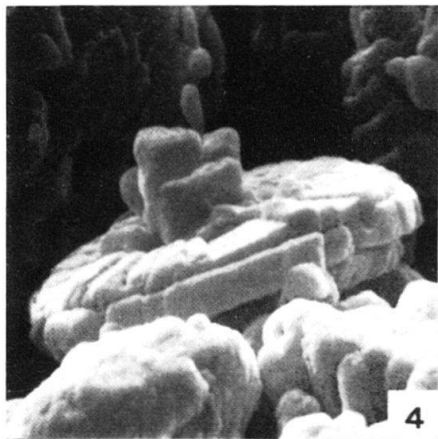
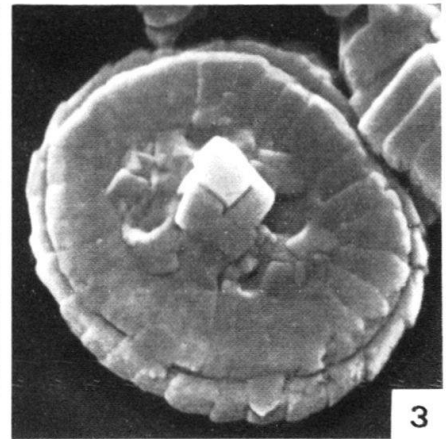
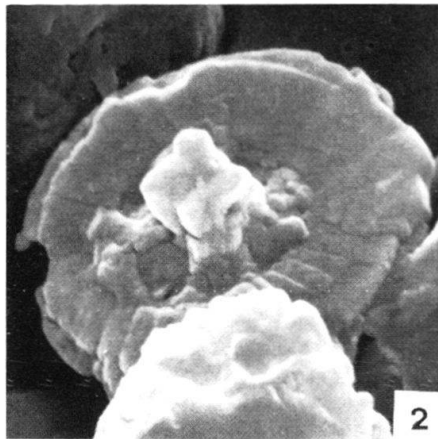
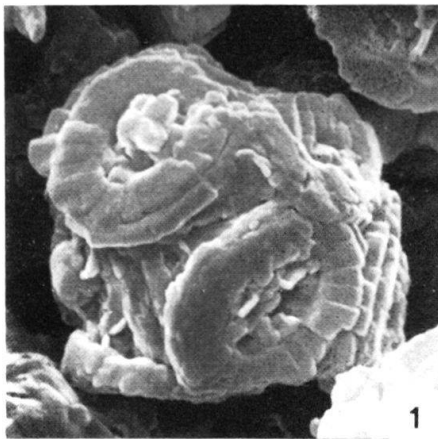


Plate VI

- Fig. 1–4 *Microstaurus* ? sp. 36 p. 182
1: Distal view
Miravetes; *jacobi*-zone, *Cr. intermedia*-subzone, All 71.109
Stereoscan micrograph 211/11, 10,770 ×
2: Same specimen as Fig. 1: oblique view on the distal side
Stereoscan micrograph 211/12, 10,670 ×
3: Same specimen as Fig. 1; oblique view on the distal side
Stereoscan micrograph 212/1, 10,770 ×
4: Lateral view
Miravetes; *privasensis*-zone, *C. elliptica*-subzone, All 71.144
Stereoscan micrograph 162/10, 10,770 ×
- Fig. 5, 6 *Grantarhabdus meddii* BLACK, 1971 p. 182
5: Distal view
Miravetes; *privasensis*-zone, *C. elliptica*-subzone, All 70.90
Stereoscan micrograph 314/1, 8,070 ×
6: Same specimen as Fig. 5; oblique view on the distal side
Stereoscan micrograph 313/12, 8,070 ×
- Fig. 7, 8 *Grantarhabdus bukryi* BLACK, 1972 p. 183
7: Distal view
Miravetes; *picteti-malbosi*-zone, *Cps. simplex*-subzone, All 71.189
Stereoscan micrograph 317/12, 10,770 ×
8: Same specimen as Fig. 7; oblique view on the distal side
Stereoscan micrograph 317/11, 10,770 ×
- Fig. 9–12 *Miravetesina favula* GRÜN, n. sp. p. 185
9: Oblique view on the distal side
Miravetes; *euxina*-zone, *C. alpina*-subzone, All 71.131
Stereoscan micrograph 266/5, 8,070 ×
10: Oblique view on the distal side
Miravetes; *picteti-malbosi*-zone, *Cps. simplex*-subzone, All 71.197
Holotype; Stereoscan micrograph 323/8, 10,770 ×
11: Same specimen as Fig. 10; distal view
Holotype; Stereoscan micrograph 323/7, 10,770 ×
12: Distal side, destroyed specimen
Miravetes; *euxina*-zone, *C. alpina*-subzone, All 71.140
Stereoscan micrograph 263/9, 8,070 ×

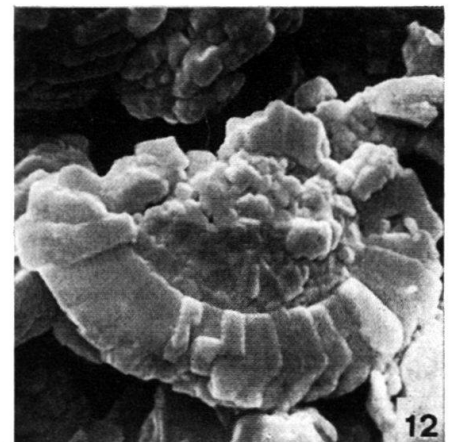
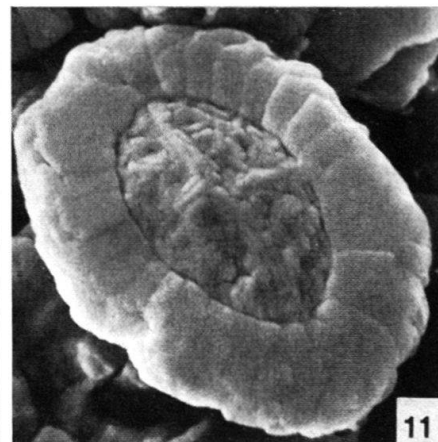
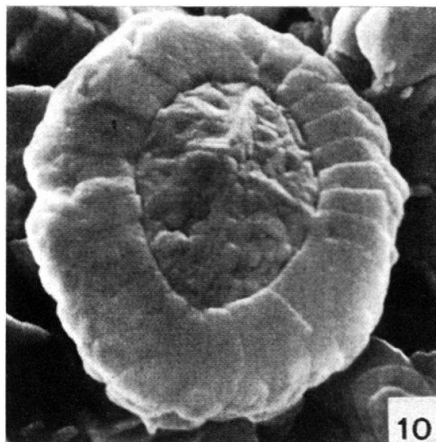
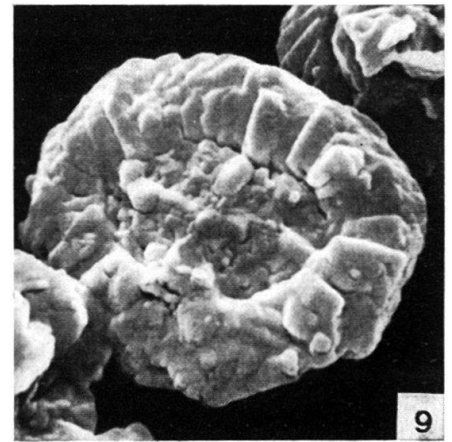
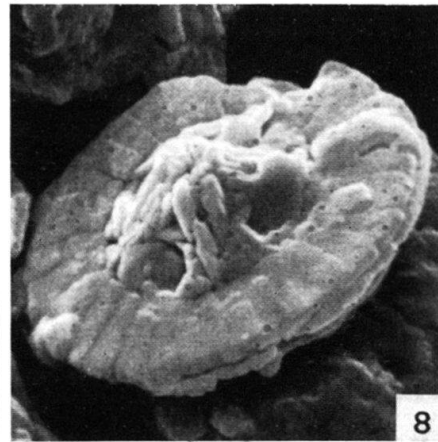
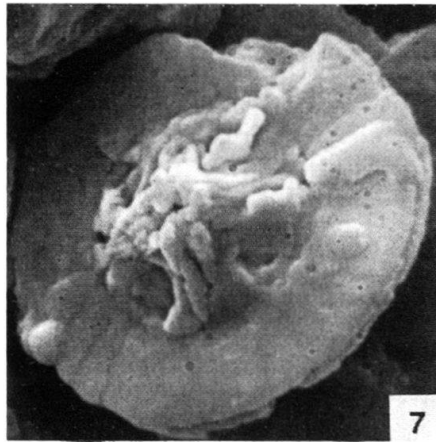
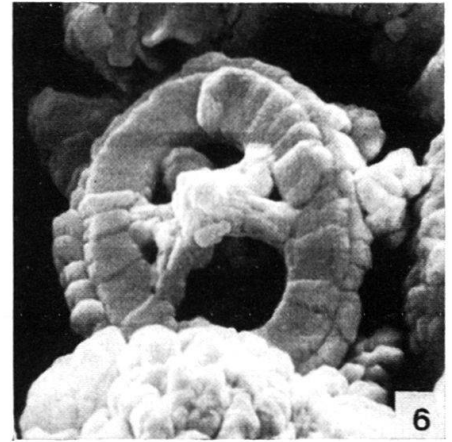
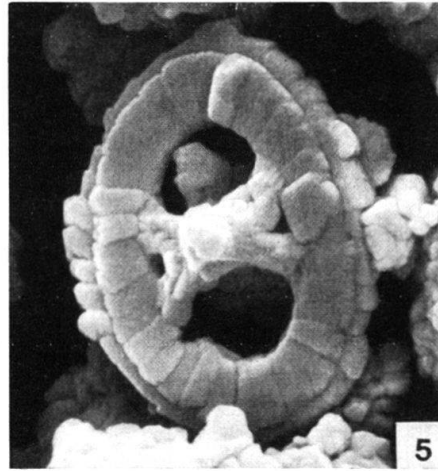
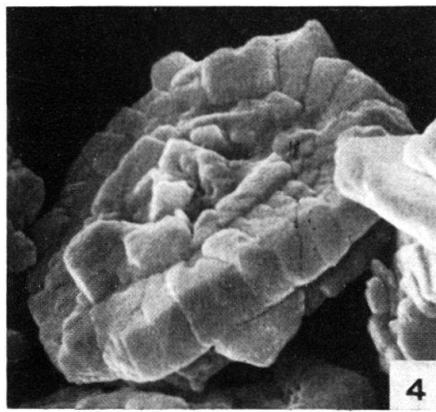
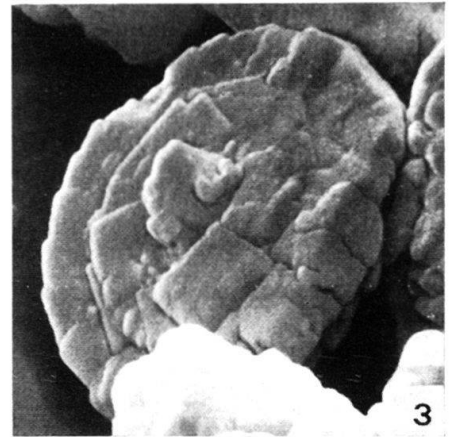
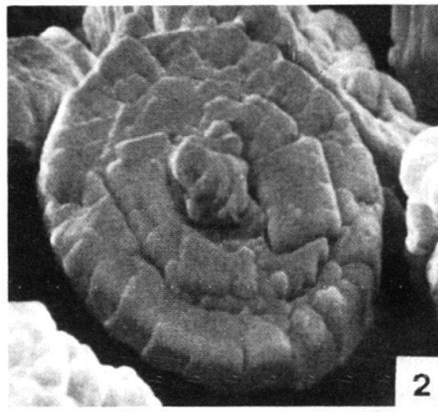
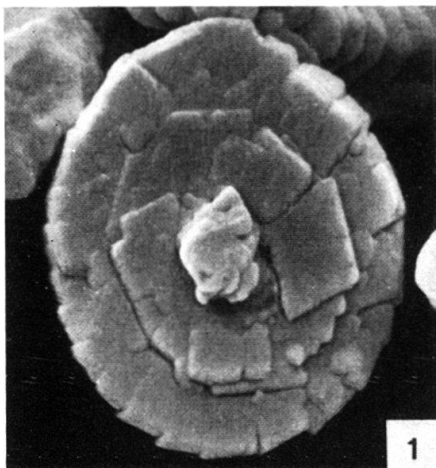


Plate VII

- Fig. 1-3 *Stephanolithion caravacaensis* GRÜN, n. sp. p. 188
1: Oblique view on the proximal side
Miravetes; *privasensis*-zone, *C. elliptica*-subzone, All 71.144
Holotype: Stereoscan micrograph 162/1, 12,050 ×
2: Same specimen as Fig 1; lateral view
Holotype: Stereoscan micrograph 162/2, 12,050 ×
3: Proximal view
Miravetes; *euxina*-zone, *C. elliptica*-subzone, All 71.143
Stereoscan micrograph 292/1, 12,050 ×
- Fig. 4 *Stephanolithion laffittei* NOËL, 1956 p. 187
Oblique view on the proximal side
Miravetes; *privasensis*-zone, *C. elliptica*-subzone, All 71.144
Stereoscan micrograph 162/11, 16,100 ×
- Fig. 5, 6 *Sollasites horticus* (STRADNER, ADAMIKER & MARESCH, 1966) BLACK, 1968 p. 189
5: Oblique view on the distal side
Miravetes; *privasensis*-zone, *C. elliptica*-subzone, All 71.182
Stereoscan micrograph 182/3, 13,500 ×
6: Same specimen as Fig. 5; distal view
Stereoscan micrograph 182/5, 13,500 ×
- Fig. 7-11 *Parhabdolithus embergeri* (NOËL, 1958) STRADNER, 1963 p. 191
7: Oblique view on the proximal side
Miravetes; *privasensis*-zone, *C. elliptica*-subzone, All 71.161
Stereoscan micrograph 312/1, 5,400 ×
8: Same specimen as Fig. 7; lateral view
Stereoscan micrograph 312/2, 5,400 ×
9: Same specimen as Fig. 7; oblique view on the distal side
Stereoscan micrograph 312/3, 5,400 ×
10: Proximal view
Miravetes; *privasensis*-zone, *C. elliptica*-subzone, All 70.90
Stereoscan micrograph 221/8, 8,070 ×
11: Proximal view
Miravetes; *privasensis*-zone, *C. elliptica*-subzone, All 70.90
Stereoscan micrograph 220/12, 6,100 ×
- Fig. 12 *Zygodiscus* sp. cf. *Z. compactus* BUKRY, 1969 p. 192
Distal view
Miravetes; *privasensis*-zone, *C. elliptica*-subzone, All 71. 181
Stereoscan micrograph 315/9, 10,770 ×

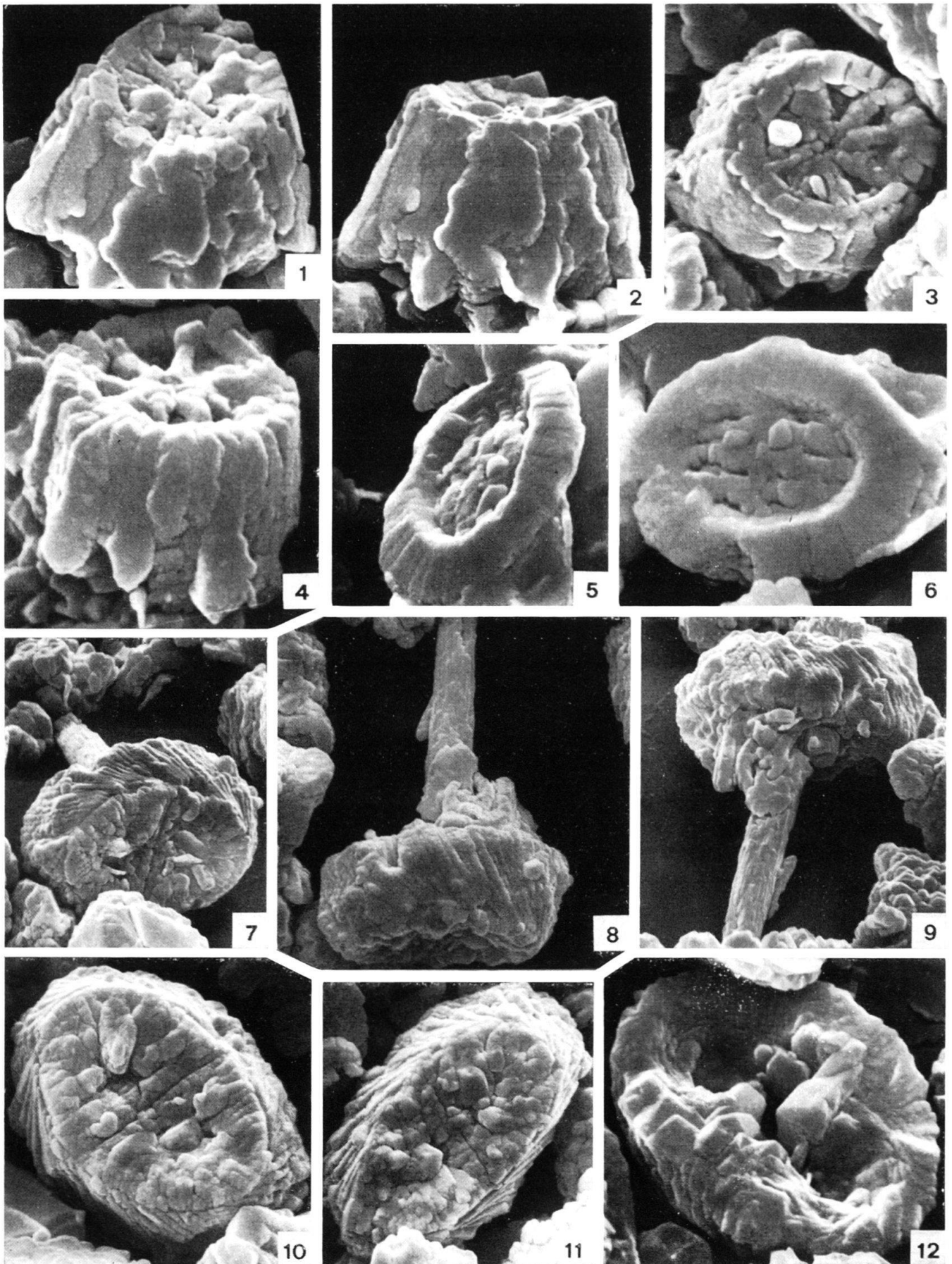


Plate VIII

- Fig. 1, 2 *Zygodiscus* sp. cf. *Z. compactus* BUKRY, 1969 p. 192
1: Distal view
Miravetes; *euxina*-zone, *C. alpina*-subzone, All 71.141
Stereoscan micrograph 264/2, 10,770 ×
2: Distal view
Miravetes; *privasensis*-zone, *C. elliptica*-subzone, All 70.90
Stereoscan micrograph 313/8, 10,770 ×
- Fig. 3–5 *Micrantholithus crenulatus* BRAMLETTE & SULLIVAN, 1961 p. 192
3: Plan view
Cehegin–Big Tree section; lower Barremian, All 69.23
Transmission electronmicrograph 2385/69, 5,400 ×
4: Plan view
Cehegin–Middle Ridge section; upper Hauterivian, All 68.38
Stereoscan micrograph 459/3, 8,070 ×
5: Plan view
Cehegin–Middle Ridge section; lower Barremian, All 68.45
Stereoscan micrograph 553/7, 6,100 ×
- Fig. 6 *Markalius inversus* (DEFLANDRE, 1954) BRAMLETTE & MARTINI, 1964 p. 199
Oblique view on the proximal side
Cehegin–Middle Ridge section; Hauterivian, All 68.26
Stereoscan micrograph 552/1, 8,070 ×
- Fig. 7–12 *Conusphaera mexicana* TREJO, 1969 p. 195
7: Lateral view
Miravetes; *jacobi*-zone, *Cr. intermedia*-subzone, All 71.103
Stereoscan micrograph 211/5, 8,070 ×
8: Oblique view on the proximal side
Miravetes; *jacobi*-zone, *Cr. intermedia*-subzone, All 71.103
Stereoscan micrograph 211/2, 8,070 ×
9: Same specimen as Fig. 8; proximal view
Stereoscan micrograph 211/3, 8,070 ×
10: Lateral view
Miravetes; *jacobi*-zone, *Cr. intermedia*-subzone, All 71.109
Stereoscan micrograph 212/4, 12,050 ×
11: Same specimen as Fig. 10; oblique view on the proximal side
Stereoscan micrograph 212/5, 12,050 ×
12: Oblique view on the distal side
Miravetes; *jacobi*-zone, *C. alpina*-subzone, All 71.119
Stereoscan micrograph 214/4, 12,050 ×

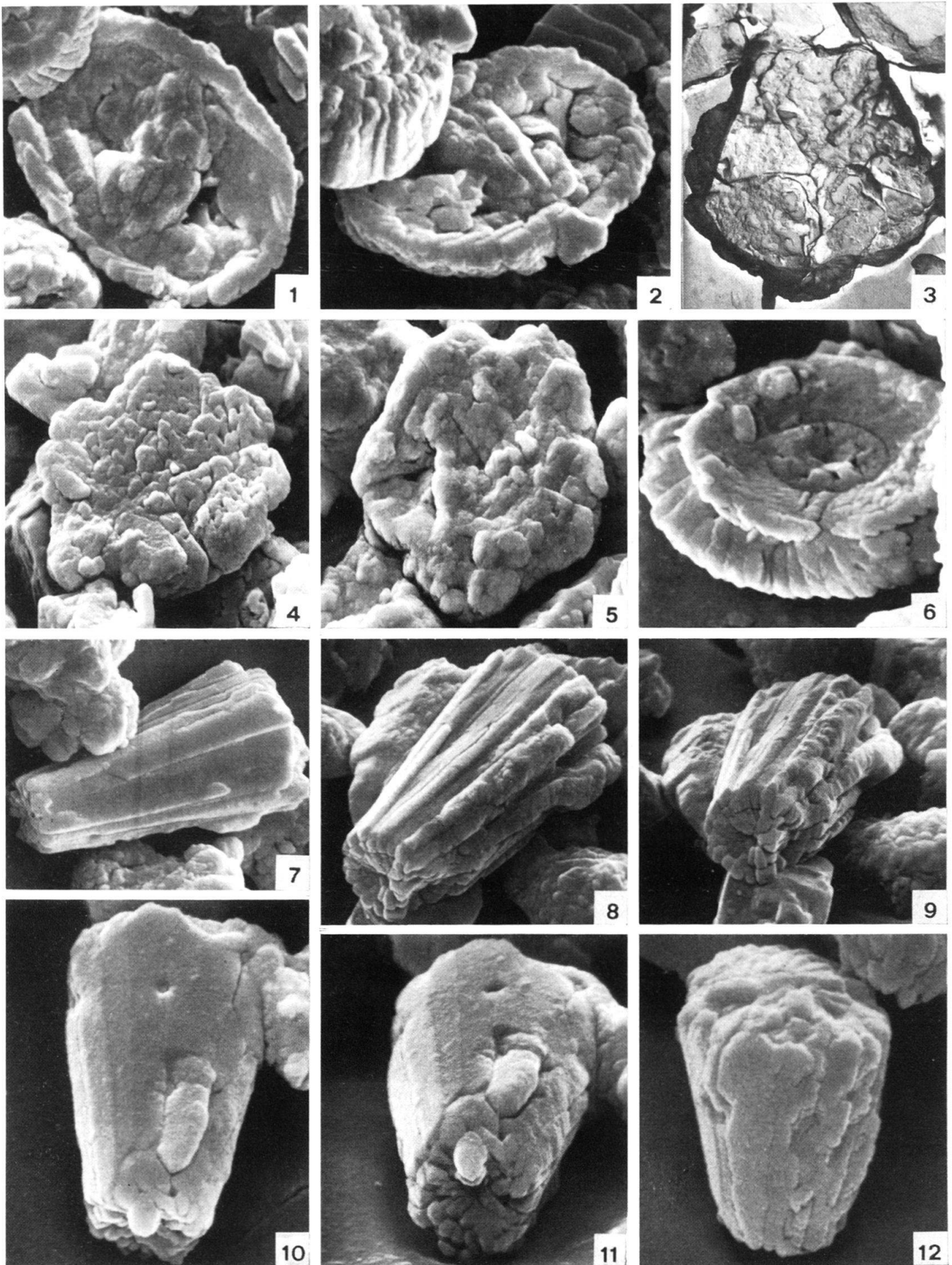


Plate IX

- Fig. 1–6 *Diazomatolithus subbeticus* GRÜN, n. sp. p. 196
- 1: Coccosphere, heavily destroyed
Miravetes; *privasensis*-zone, *C. elliptica*-subzone, All 71.161
Stereoscan micrograph 217/4, 10,770 ×
- 2: Proximal view
Miravetes; *jacobi*-zone, *C. alpina*-subzone, All 71.119
Stereoscan micrograph 126/4, 16,100 ×
- 3: Oblique view on the proximal side
Miravetes; *callisto*-zone, *simplex-oblonga-dadayi*-subzone, All 71.211
Holotype; Stereoscan micrograph 436/7, 14,500 ×
- 4: Oblique view on the proximal side
Miravetes; *picteti-malbosi*-zone, *Cps. simplex*-subzone, All 71.197
Stereoscan micrograph 318/5, 13,500 ×
- 5: Oblique view on the proximal side
Miravetes; *privasensis*-zone, *C. elliptica*-subzone, All 70.90
Stereoscan micrograph 222/6, 12,100 ×
- 6: Oblique view on the proximal side
Miravetes; *euxina*-zone, *C. alpina*-subzone, All 71.122
Stereoscan micrograph 171/3, 16,100 ×
- Fig. 7–12 *Markalius ellipticus* GRÜN, n. sp. p. 200
- 7: Coccosphere
Chegin–Middle Ridge section; Hauterivian, All 68.23
Stereoscan micrograph 551/3, 6,100 ×
- 8: Proximal view
Miravetes; *privasensis*-zone, *C. elliptica*-subzone, All 70.90
Holotype; Stereoscan micrograph 219/4, 6,100 ×
- 9: Same specimen as Fig. 8; oblique view on the proximal side
Holotype; Stereoscan micrograph 219/5, 6,100 ×
- 10: Distal view
Miravetes; *privasensis*-zone, *C. elliptica*-subzone, All 70.89
Stereoscan micrograph 68/3, 8,070 ×
- 11: Proximal view
Miravetes; *privasensis*-zone, *C. elliptica*-subzone, All 71.161
Stereoscan micrograph 217/9, 8,070 ×
- 12: Oblique view on the proximal side
Miravetes; *euxina*-zone, *C. alpina*-subzone, All 71.122
Stereoscan micrograph 265/11, 8,070 ×

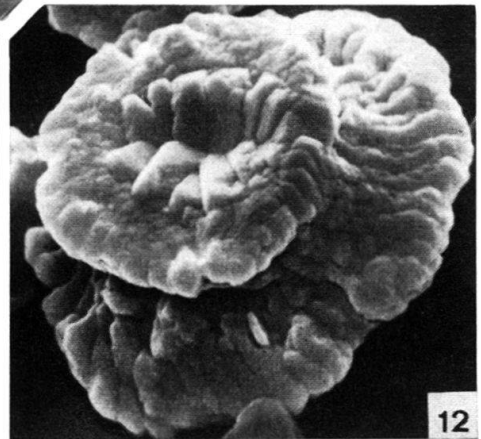
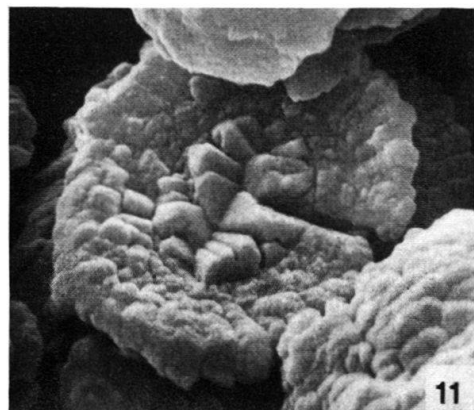
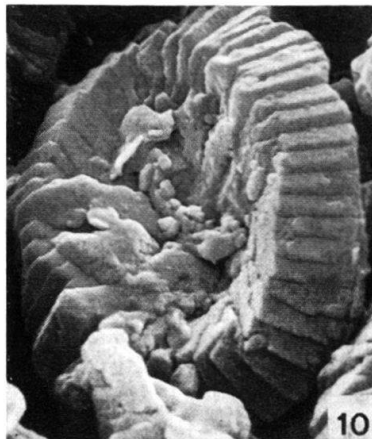
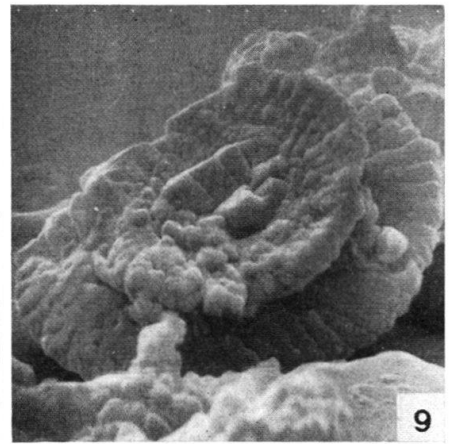
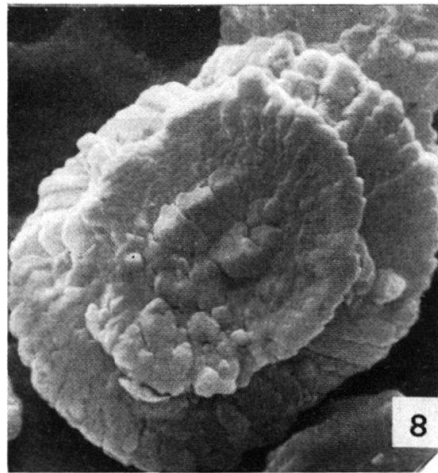
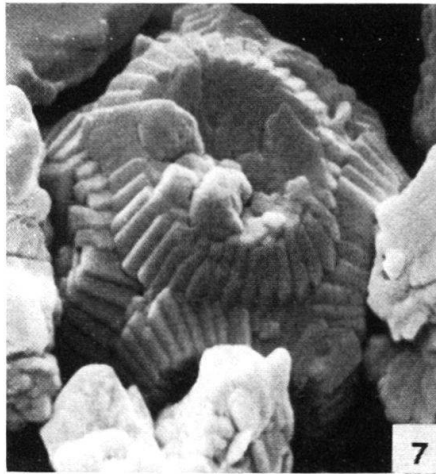
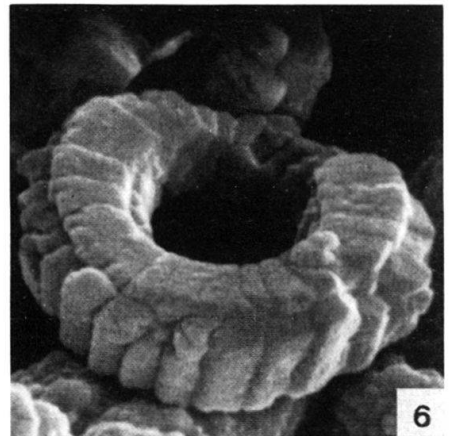
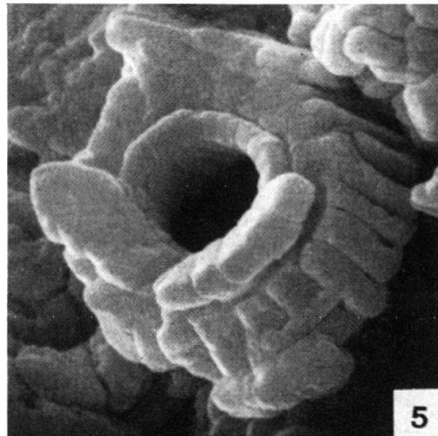
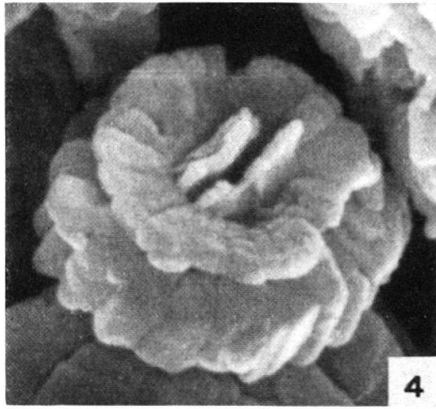
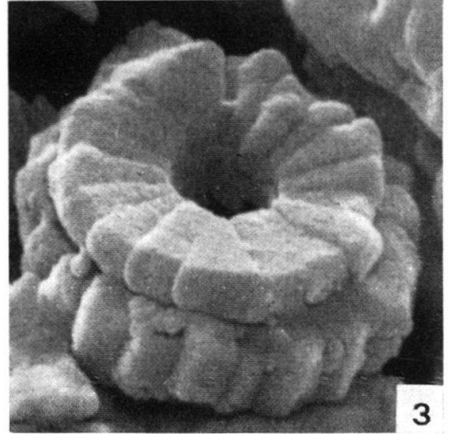
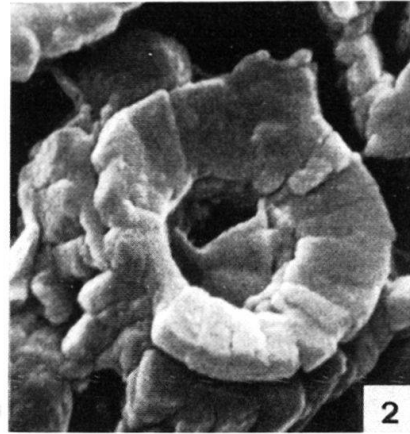
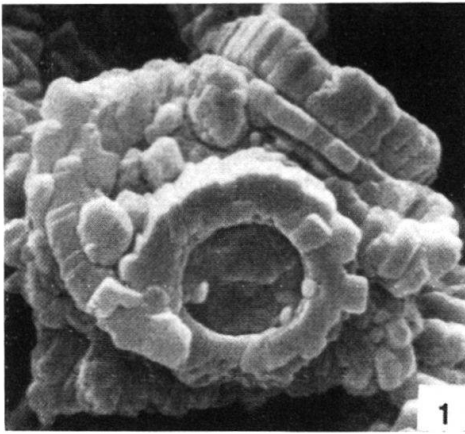


Plate X

- Fig. 1–12 *Tubodiscus verenae* THIERSTEIN, 1973, emend. GRÜN p. 197
- 1: Proximal view
Miravetes; *privasensis*-zone, *C. elliptica*-subzone, All 70.90
Stereoscan micrograph 319/10, 5,400 ×
- 2: Same specimen as Fig. 1; oblique view on the proximal side
Stereoscan micrograph 319/11, 6,700 ×
- 3: Oblique view on the proximal side
Miravetes; *euxina*-zone, *C. alpina*-subzone, All 71.139
Stereoscan micrograph 272/9, 8,070 ×
- 4: Lateral view
Deepwell Nieuwerkerk 1 (Netherlands); lower Aptian, Str. 23
Stereoscan micrograph 379/10, 12,900 ×
- 5: Distal view
Cehegin–Middle Ridge section; upper Valanginian, All 69.84
Stereoscan micrograph 471/5, 8,070 ×
- 6: Distal view
Miravetes; *privasensis*-zone, *C. elliptica*-subzone, All 71.144
Stereoscan micrograph 162/8, 6,100 ×
- 7: Lateral view
Miravetes; *privasensis*-zone, *C. elliptica*-subzone, All 71.153
Stereoscan micrograph 297/3, 10,770 ×
- 8: Same specimen as Fig. 6; oblique view on the distal side
Stereoscan micrograph 162/9, 6,100 ×
- 9: Proximal view
Deepwell Nieuwerkerk 1 (Netherlands); lower Aptian, Str. 23
Stereoscan micrograph 379/2, 9,700 ×
- 10: Distal view, broken specimen
Cehegin–Middle Ridge section; upper Valanginian, All 69.84
Stereoscan micrograph 472/1, 8,070 ×
- 11: Oblique view on the distal side of broken specimen
Miravetes; *privasensis*-zone, *C. elliptica*-subzone, All 71.172
Stereoscan micrograph 315/1, 10,770 ×
- 12: Same specimen as Fig. 11; lateral view
Stereoscan micrograph 315/2, 10,770 ×

