

# Plates

Autor(en): **[s.n.]**

Objektyp: **Appendix**

Zeitschrift: **Eclogae Geologicae Helvetiae**

Band (Jahr): **89 (1996)**

Heft 3

PDF erstellt am: **13.09.2024**

## **Nutzungsbedingungen**

Die ETH-Bibliothek ist Anbieterin der digitalisierten Zeitschriften. Sie besitzt keine Urheberrechte an den Inhalten der Zeitschriften. Die Rechte liegen in der Regel bei den Herausgebern.

Die auf der Plattform e-periodica veröffentlichten Dokumente stehen für nicht-kommerzielle Zwecke in Lehre und Forschung sowie für die private Nutzung frei zur Verfügung. Einzelne Dateien oder Ausdrucke aus diesem Angebot können zusammen mit diesen Nutzungsbedingungen und den korrekten Herkunftsbezeichnungen weitergegeben werden.

Das Veröffentlichen von Bildern in Print- und Online-Publikationen ist nur mit vorheriger Genehmigung der Rechteinhaber erlaubt. Die systematische Speicherung von Teilen des elektronischen Angebots auf anderen Servern bedarf ebenfalls des schriftlichen Einverständnisses der Rechteinhaber.

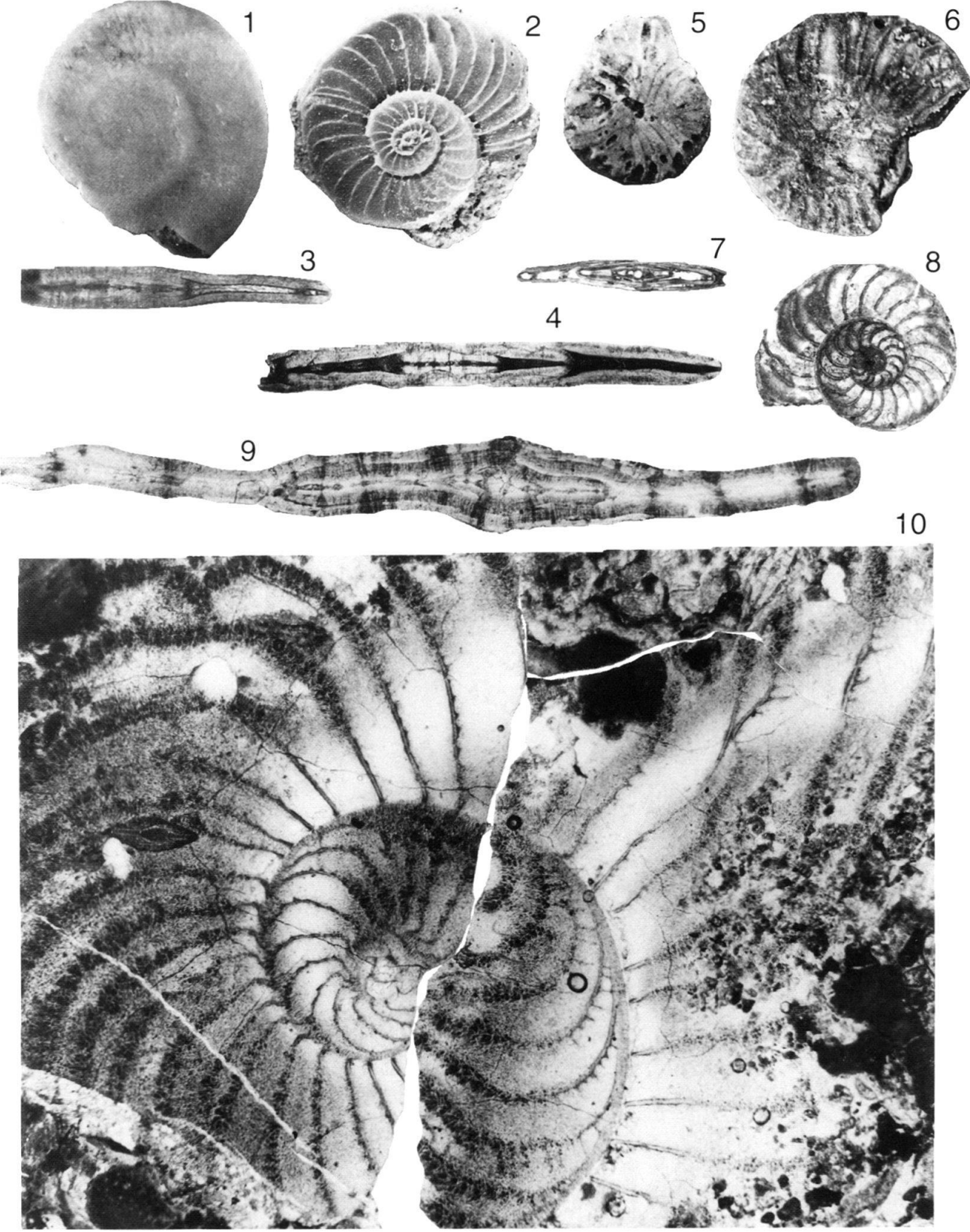
## **Haftungsausschluss**

Alle Angaben erfolgen ohne Gewähr für Vollständigkeit oder Richtigkeit. Es wird keine Haftung übernommen für Schäden durch die Verwendung von Informationen aus diesem Online-Angebot oder durch das Fehlen von Informationen. Dies gilt auch für Inhalte Dritter, die über dieses Angebot zugänglich sind.

**Plate 1**

- Fig. 1 *Operculina bontourensis* Caudri, n. sp., holotype p 1185  
Point Bontour, St. 63, C 36023, × 10.
- Fig. 2 *Operculina bontourensis* Caudri, n. sp. p 1185  
Farallon Rock, C 36024, × 10.
- Fig. 3–4 *Operculina bontourensis* Caudri n. sp. p 1185  
Point Bontour, St. 63, C 36025, × 17.
- Fig. 5 *Operculinoides suteri* Caudri, n. sp., holotype p 1189  
Calyx 59, 390–400 feet, C 35961, × 17.
- Fig. 6–8 *Operculinoides suteri* Caudri, n. sp. p 1189  
San Fernando Railway Station, C 36026–36028 (Fig. 6–8), × 17.
- Fig. 9 *Heterostegina indicata* Caudri, n. sp. p 1193  
Morne Roche Quarry, K.S. 167, C 35964, × 17
- Fig. 10 *Heterostegina indicata* Caudri, n. sp., holotype p 1193  
Morne Roche Quarry, K.S. 167, C 35965, × 17.

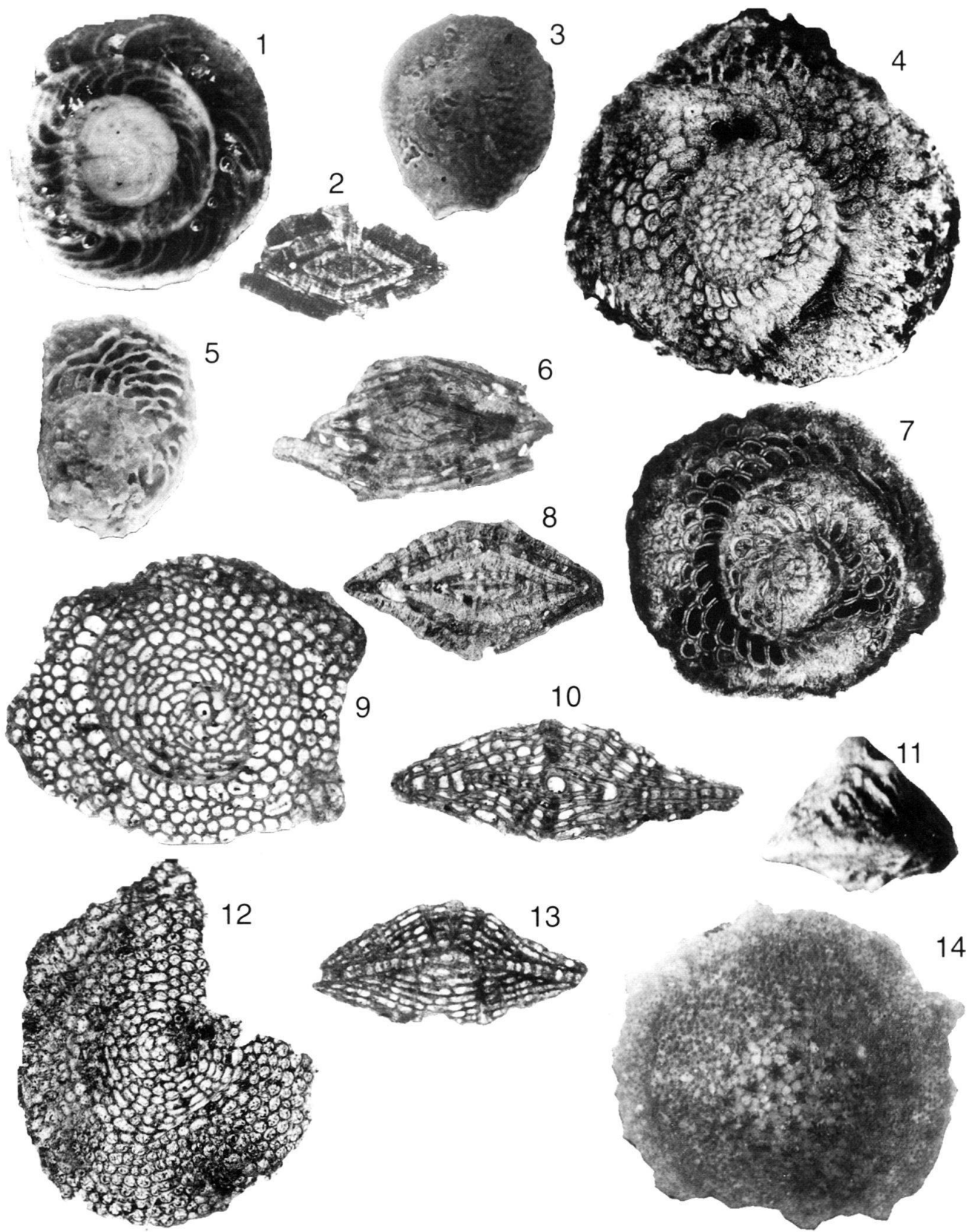
Plate 1



## Plate 2

- |           |  |         |
|-----------|--|---------|
| Fig. 1    | <i>Amphistegina farallonensis</i> Caudri, n. sp., holotype<br>Farallon Rock, S.L. 99, C 35945, × 30.   | p. 1235 |
| Fig. 2    | <i>Amphistegina farallonensis</i> Caudri, n. sp.<br>Farallon Rock, S.L. 99, C 35946, × 30.   | p. 1235 |
| Fig. 3    | <i>Helicolepidinoides intermedius</i> Caudri, n. sp.<br>Point Bontour, St. 68, C 36075, × 30.  | p. 1231 |
| Fig. 4    | <i>Helicolepidinoides intermedius</i> Caudri, n. sp., B-form<br>Vistabella Quarry, coll. Lehner 1933, C 36073, × 30.   | p. 1231 |
| Fig. 5    | <i>Helicolepidinoides intermedius</i> Caudri, n. sp.<br>broken specimen showing the alar prolongations (no lateral chambers), Farallon<br>Rock, coll. Stainforth, Renz & Rutsch 1939, C 36072, × 30.                             | p. 1231 |
| Fig. 6    | <i>Helicolepidinoides intermedius</i> Caudri, n. sp.<br>axial section, Farallon Rock, same locality, C 36037, × 30.  | p. 1231 |
| Fig. 7    | <i>Helicolepidinoides intermedius</i> Caudri n. sp.<br>A-form, holotype, Point Bontour, St. 68, C 36038, × 30.   | p. 1231 |
| Fig. 8    | <i>Helicolepidinoides intermedius</i> Caudri, n. sp.<br>tangential section, Point Bontour, St. 68, C 36074, × 30.  | p. 1231 |
| Fig. 9–10 | <i>Helicolepidina polygyralis</i> Barker<br>N.W. Colombia, Province of Bolivar, v.S. 795 Middle Eocene (introduced for<br>comparison with <i>Helicolepidinoides intermedius</i> ), C 36035 (Fig. 9), C 36036<br>(Fig. 10), × 30. |         |
| Fig. 11   | <i>Eoconuloides senni</i> var. <i>conicus</i> Caudri, n. var., holotype<br>Charuma, A.E.G. 3635B, C 36032, × 30.   | p. 1230 |
| Fig. 12   | <i>Lepidocyclina (Polylepidina) nitida</i> Caudri, n. sp., holotype<br>Farallon Rock, coll. Stainforth, Renz & Rutsch 1939, C 35930, × 30.   | p. 1215 |
| Fig. 13   | <i>Lepidocyclina (Polylepidina) nitida</i> Caudri, n. sp.<br>with slightly conical equatorial layer, Farallon Rock, S.L. 99, C 36034, × 30.  | p. 1215 |
| Fig. 14   | <i>Lepidocyclina asterocolumnata</i> Caudri, n. sp., holotype<br>Cipero coast, Grimsdale 2, C 36060, × 17.   | p. 1229 |

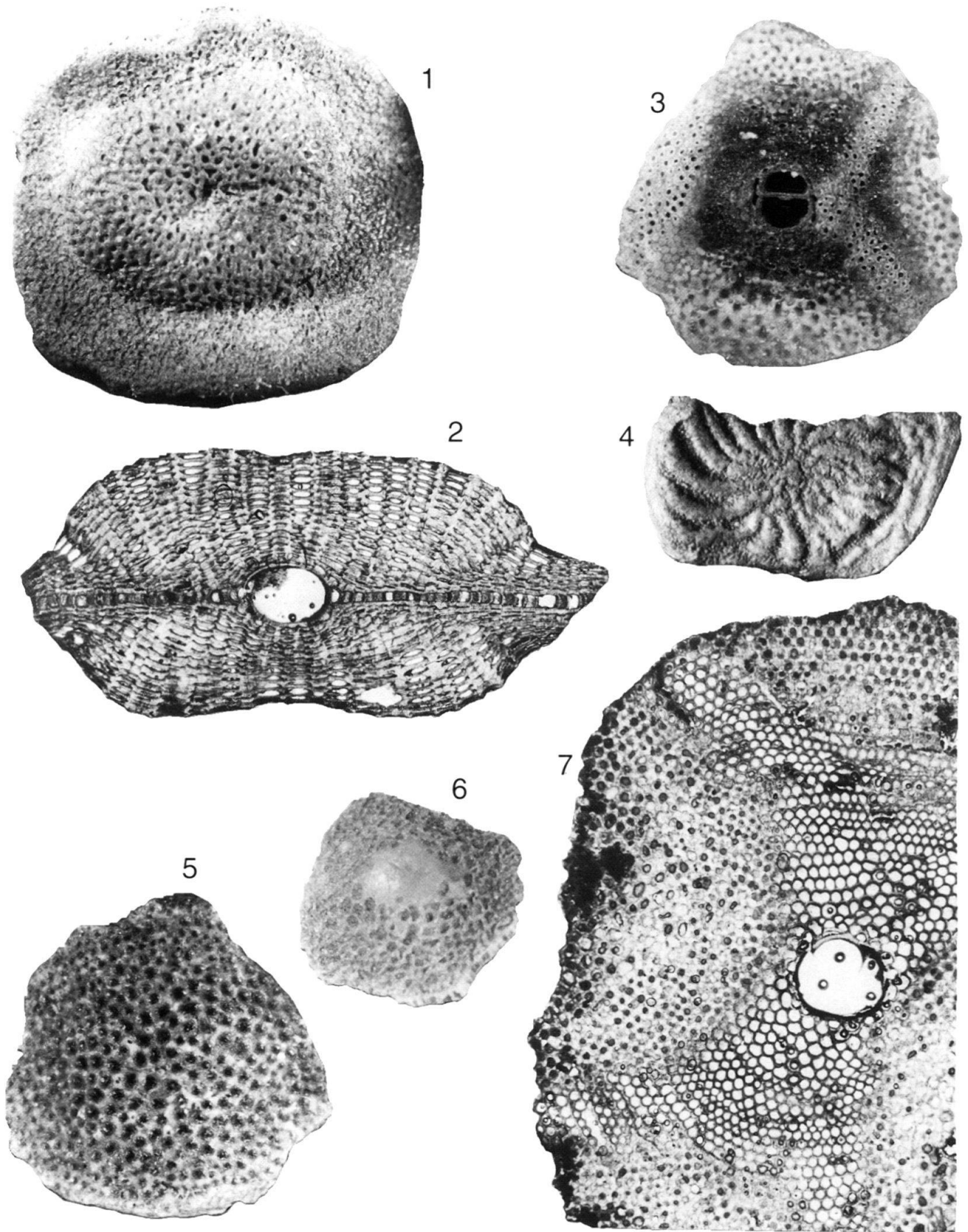
Plate 2



**Plate 3**

- Fig. 1 *Lepidocyclina sanfernandensis* var. *depressata* Caudri, n. var. p. 1223  
holotype, Ciperco coast, C.S. 11, C 35998, × 8.
- Fig. 2 *Lepidocyclina sanfernandensis* var. *depressata* Caudri, n. var. p. 1223  
Ciperco coast, C.S. 11, C 35999, × 17.
- Fig. 3 *Lepidocyclina* cf. *supera* (Conrad), large variety p. 1226  
ground down to equatorial layer (see Fig. 5), Ciperco coast, Grimsdale 2, C 36062, × 17.
- Fig. 4 *Operculinoides ocalanus* var. *decoratus* Caudri, n. var. p. 1187  
holotype, Point Bontour, St. 68, C 36030, × 17.
- Fig. 5 *Lepidocyclina* cf. *supera* (Conrad), large variety p. 1226  
(see Fig. 3), Ciperco coast, Grimsdale 2, C 36062, × 17.
- Fig. 6 *Lepidocyclina yurnagunensis* var. *inflata* Caudri, n. var. p. 1221  
holotype, Ciperco coast, Grimsdale 2, C 35972, × 17.
- Fig. 7 *Lepidocyclina sanfernandensis* var. *depressata* Caudri, n. var. p. 1223  
Ciperco coast, C.S. 11, C 36076, × 17.

Plate 3

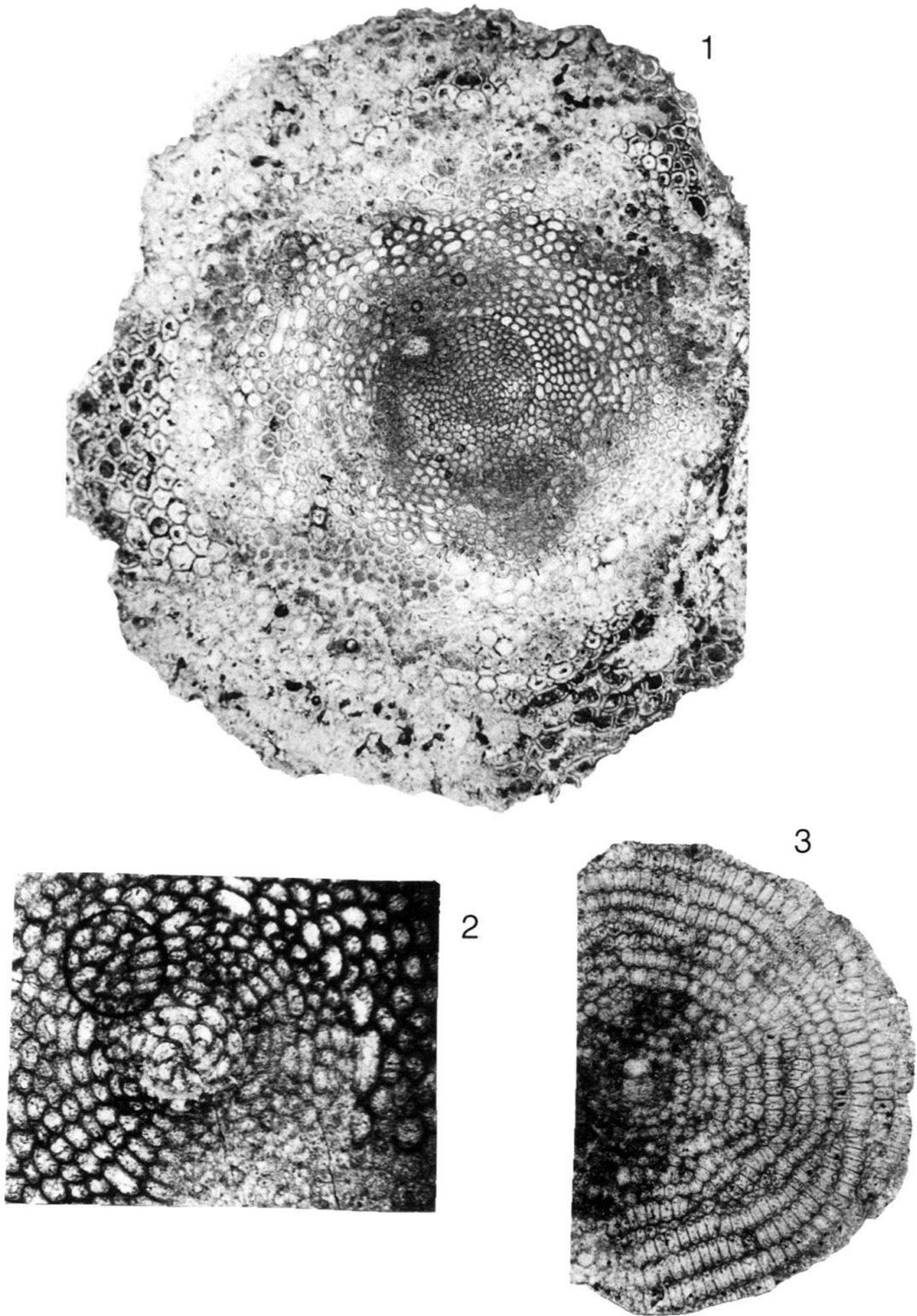


**Plate 4**

- Fig. 1 *Helicolepidina spiralis* Tobler, B-form p. 1233  
section exactly through the spiral of the nepiont (same specimen as Pl. 15:11),  
Point Bontour, St. 63, C 35925, × 17.
- Fig. 2 *Helicolepidina spiralis* Tobler, B-form p. 1233  
section through the trochoid level of the nepiont (compare with Pl. 15:11),  
Soldado Rock, K. 3677, C 31172, × 50.
- Fig. 3 *Hexagonocyclina meandrica* Caudri p. 1202  
Soldado Rock, K. 2951, C 31148, × 50.



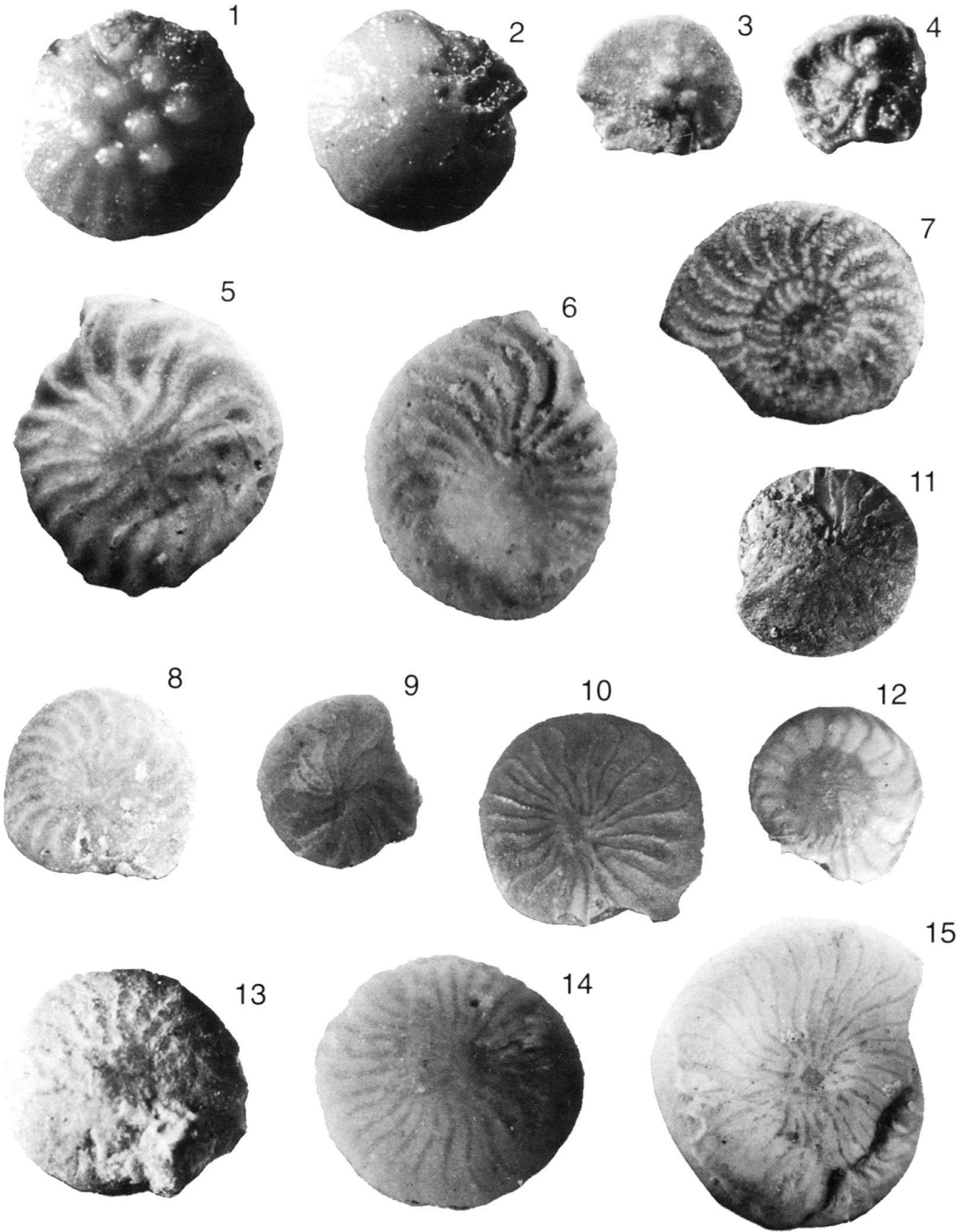
Plate 4



### Plate 5

- |         |   |         |
|---------|---|---------|
| Fig. 1  | <i>Ranikothalia antillea</i> (Hanzawa)<br>Lizard Springs, Mky 102b III, U.S.N.M. Washington, × 17.  | p. 1183 |
| Fig. 2  | <i>Ranikothalia antillea</i> (Hanzawa)<br>Lizard Springs, Mky 102b III, U.S.N.M. Washington, × 17.  | p. 1183 |
| Fig. 3  | <i>Ranikothalia tobleri</i> (Vaughan & Cole)<br>Lizard Springs, Mky 102b III, U.S.N.M. Washington, × 17.                                  | p. 1183 |
| Fig. 4  | <i>Ranikothalia soldadensis</i> (Vaughan & Cole)<br>juvenile specimen, Lizard Springs, Mky 102b III, U.S.N.M. Washington, × 17.           | p. 1185 |
| Fig. 5  | <i>Operculinoides ocalanus</i> (Cushman)<br>Vistabella area, St. 45, C 31249, × 17.   | p. 1187 |
| Fig. 6  | <i>Operculinoides soldadensis</i> Vaughan & Cole<br>Soldado Rock, K. 3692, C 31180, × 17.   | p. 1187 |
| Fig. 7  | <i>Operculina bontourensis</i> var. <i>ornata</i> Caudri, n. var., holotype<br>Point Bontour, St. 63, C 36045, × 17.                      | p. 1187 |
| Fig. 8  | <i>Operculinoides spiralis</i> Caudri<br>Point Bontour, St. 46, C 31251, × 17.  | p. 1189 |
| Fig. 9  | <i>Operculinoides kugleri</i> Vaughan & Cole<br>Point Bontour, St. 63, C 36039, × 17.   | p. 1188 |
| Fig. 10 | <i>Operculinoides semmesi ciperensis</i> Vaughan & Cole<br>Cipero Coast, Cd. 26, C 35954, × 17.   | p. 1191 |
| Fig. 11 | <i>Operculinoides trinitatis</i> (Nuttall)<br>Soldado Rock, K. 2855, C 31131, × 17.   | p. 1188 |
| Fig. 12 | <i>Operculinoides bullbrooki</i> Vaughan & Cole<br>juvenile form (or <i>cojimarensis</i> ), Morne Diablo Quarry, K.S. 122, C 35952, × 17. | p. 1191 |
| Fig. 13 | <i>Nummulites striatoreticulatus</i> (Rutten)<br>small specimen, Point Bontour, St. 63, C 36041, × 17.                                    | p. 1192 |
| Fig. 14 | <i>Operculinoides semmesi</i> Vaughan & Cole<br>Morne Diablo Quarry, K.S. 122, C 35955, × 17.   | p. 1190 |
| Fig. 15 | <i>Operculinoides bullbrooki</i> Vaughan & Cole<br>Morne Diablo Quarry, E.L. 1178, C 36054, × 17.   | p. 1191 |

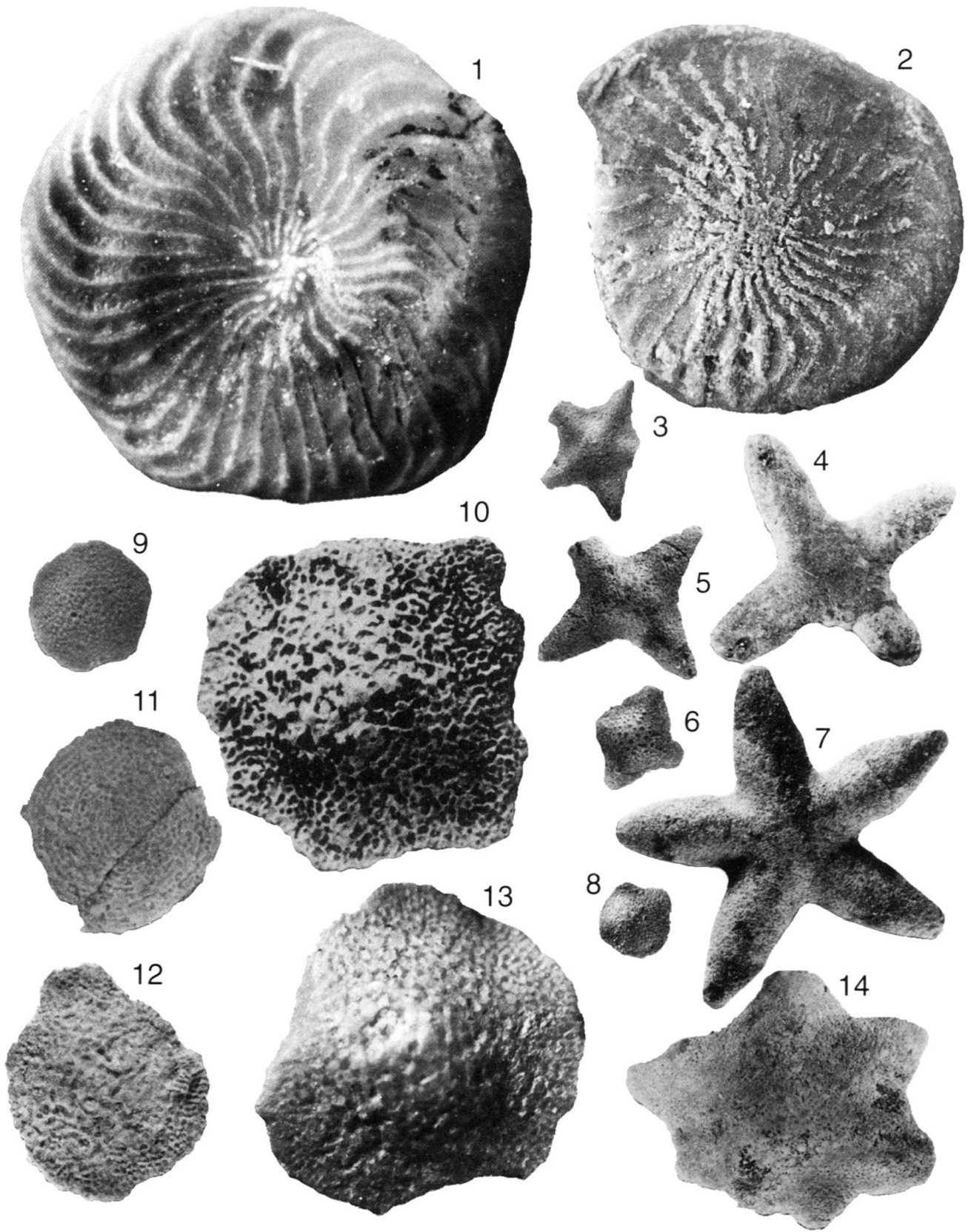
Plate 5



### Plate 6

- |          |  |         |
|----------|--|---------|
| Fig. 1   | <i>Operculinoides tuxpamensis</i> (Thalmann) Cole<br>(no central plug), Biche Quarry, C 35958, × 17.   | p. 1192 |
| Fig. 2   | <i>Operculinoides tamanensis</i> Vaughan & Cole (topohyle)<br>Tamana-Carmichael Road, K.R. 7541, C 36046, × 17   | p. 1192 |
| Fig. 3–7 | <i>Asterocyclina asterisca</i> (Guppy), A-forms<br>Soldado Rock, Bed 9a, C 31124 (Fig. 3), C 31123 (Fig. 4), C 31064 (Fig. 5),<br>C 31063 (Fig. 6), C 31065 (Fig. 7), × 9. | p. 1207 |
| Fig. 8   | <i>Asterocyclina asterisca</i> (Guppy), B-form<br>Soldado Rock, Bed 9a, C 31129, × 9.  | p. 1207 |
| Fig. 9   | <i>Hexagonocyclina inflata</i> Caudri, holotype<br>Point Bontour, St. 63, × 17.  | p. 1203 |
| Fig. 10  | <i>Lepidocyclina pustulosa</i> (H. Douvillé) s. l.<br>common eroded form (after Vaughan & Cole 1941), Soldado Rock, K. 2854,<br>U.S.N.M. Washington, × 17.                 | p. 1218 |
| Fig. 11  | <i>Hexagonocyclina meandrica</i> Caudri<br>Soldado Rock, Bed 3, K. 2950, C 31132, × 17.  | p. 1202 |
| Fig. 12  | <i>Lepidocyclina peruviana</i> Cushman<br>Soldado Rock, K. 1500, C 31077, × 17.  | p. 1217 |
| Fig. 13  | <i>Helicolepidina spiralis</i> Tobler<br>with radiating rows of lateral chambers near edge, Point Bontour, St. 63, C 36052, × 17.  | p. 1233 |
| Fig. 14  | <i>Asterocyclina soldadensis</i> Caudri<br>Navette area, R.M. 1337, C 35947, × 17.   | p. 1209 |

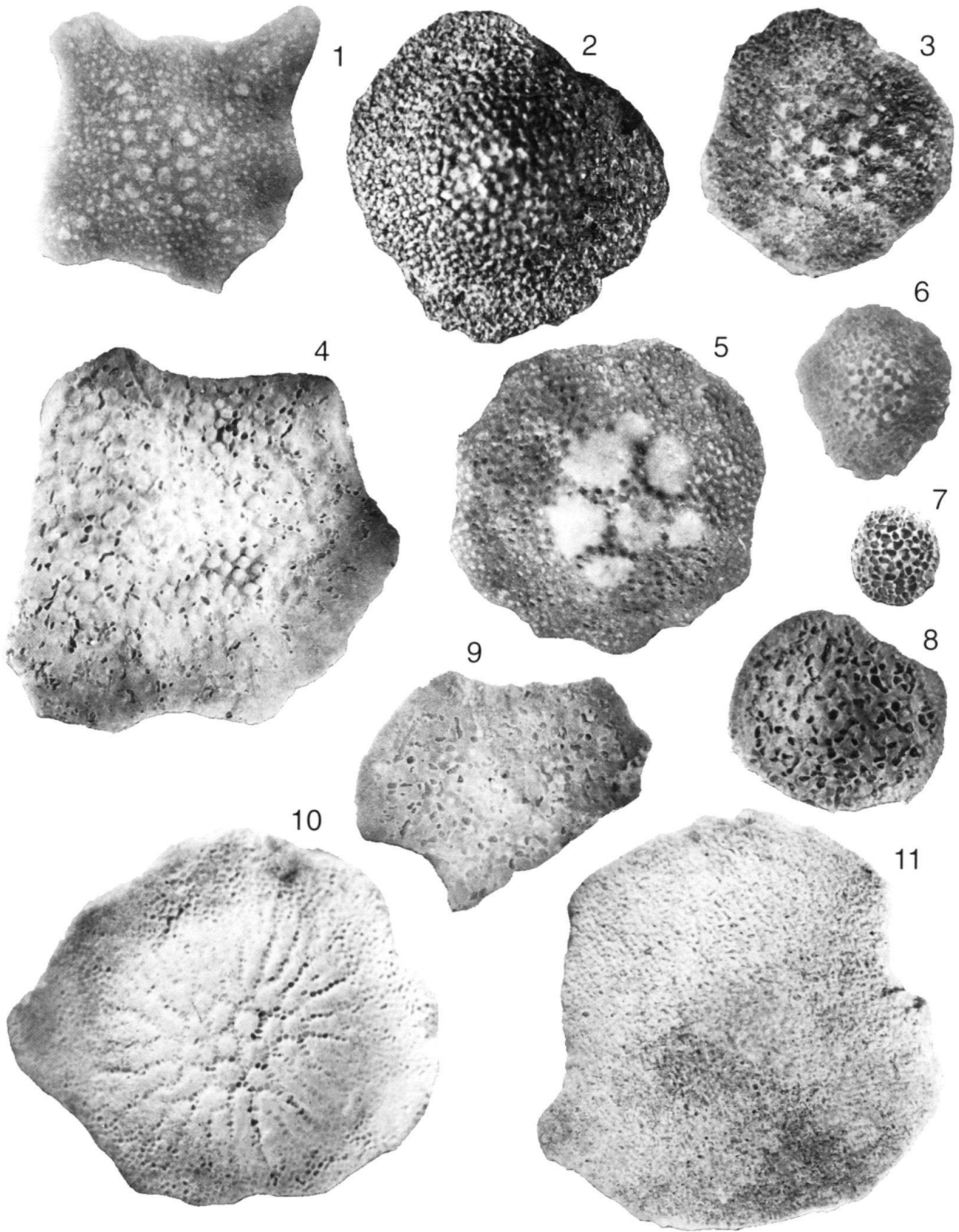
Plate 6



### Plate 7

- |         |   |         |
|---------|---|---------|
| Fig. 1  | <i>Asterocyclina (Miogypsina) vaughani</i> (Cushman)<br>Vistabella, Schlumberger office section, St. 148, C 35951, × 17.                                    | p. 1208 |
| Fig. 2  | <i>Lepidocyclina yurnagunensis</i> Cushman<br>Common A-form, Ciperó Coast, Grimsdale 2, C 35966, × 17.  | p. 1220 |
| Fig. 3  | <i>Lepidocyclina tempanii</i> Vaughan & Cole<br>Charuma, A.E.G. 4567, C 35975, × 17.  | p. 1222 |
| Fig. 4  | <i>Lepidocyclina spatiosa</i> Caudri, B-form<br>Navette area, R.M. 1337, C 36069, × 9.  | p. 1220 |
| Fig. 5  | <i>Lepidocyclina yurnagunensis</i> Cushman, B-form<br>Vistabella, E.L. 1207, C 35969, × 17.   | p. 1220 |
| Fig. 6  | <i>Lepidocyclina subglobosa</i> Nuttall<br>intact specimen, Vistabella, E.L. 1435, C 35973, × 17.   | p. 1221 |
| Fig. 7  | <i>Lepidocyclina subglobosa</i> Nuttall<br>common eroded form, Point Bontour, St. 79, C 36022, × 17.  | p. 1221 |
| Fig. 8  | <i>Lepidocyclina pancanalis</i> Vaughan & Cole<br>Charuma, A.E.G. 1820, C 35993, × 17.  | p. 1227 |
| Fig. 9  | <i>Lepidocyclina spatiosa</i> Caudri, A-form<br>Navette area, R.M. 1337, C 31259, × 9.  | p. 1220 |
| Fig. 10 | <i>Lepidocyclina giraudi</i> R. Douvillé<br>Morne Diablo Quarry, K. coll. 12-1-41 (photographed specimen lost, replaced by one from K.S. 21), C 36021, × 9. | p. 1228 |
| Fig. 11 | <i>Lepidocyclina forresti</i> Vaughan<br>pillarless variety, Morne Diablo Quarry, K.S. 70, C 36003, × 9.  | p. 1226 |

Plate 7

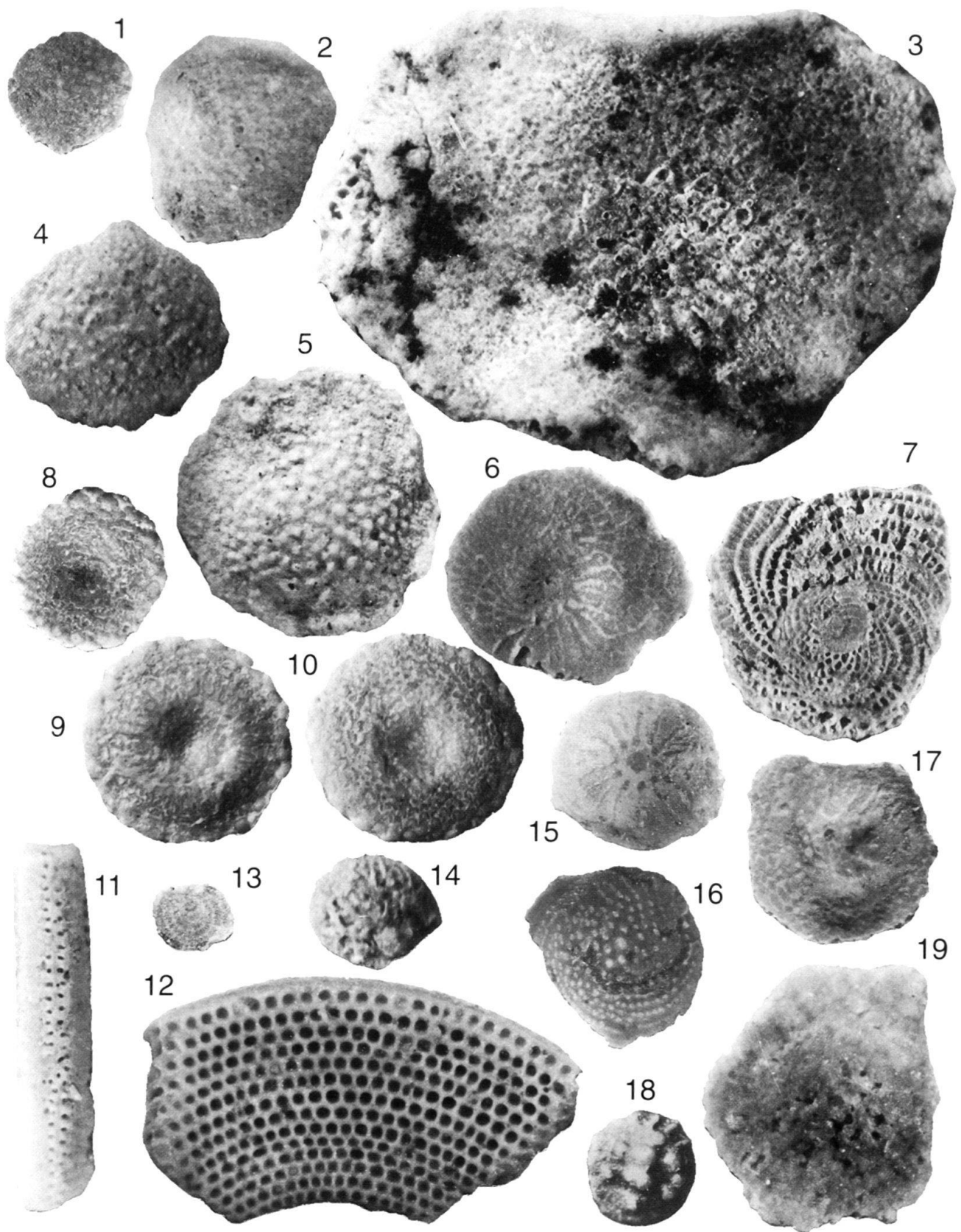


## Plate 8

- Fig. 1 *Miogypsina (Miogypsina) gunteri* Cole p. 1236  
Kapur Quarry, Lz. 3473, C 35916, × 17.
- Fig. 2 *Miogypsina (Miolepidocyclina) staufferi* Koch p. 1237  
A-form, Morne Diablo Quarry, K. 2668, C 35918, × 17.
- Fig. 3 *Miogypsina* sp., B-form  
(with colony of Bryozoa attached to the surface) Morne Diablo Quarry, K.S. 70,  
C 35922, × 17.
- Fig. 4 *Miogypsina (Miogypsina) bramletti* Gravell p. 1237  
Morne Diablo Quarry, K.S. 19b, C 36019, × 17.
- Fig. 5 *Miogypsina (Miogypsina) hawkinsi* Hodson p. 1236  
Morne Diablo Quarry, K. coll. 12-1-41, C 35917, × 17.
- Fig. 6 *Heterostegina antillea* Cushman  
Moruga River District, BB. 5958, C 36015, × 17.
- Fig. 7 *Spiroclypeus bullbrooki* Vaughan & Cole p. 1193  
Marac River, K. 482, C 36049, × 14.
- Fig. 8 *Planorbulinella trinitatis* (Nuttall) p. 1237  
Morne Diablo Quarry, K.S. 70, C 36055, × 17.
- Fig. 9–10 *Planorbulinella trinitatis* (Nuttall) p. 1237  
both sides of same specimen, Biche Quarry, C 36051, × 17.
- Fig. 11 *Sorites* sp. p. 1237  
edge, Sainte Croix Quarry, C 36043, × 60.
- Fig. 12 *Sorites* sp. p. 1237  
eroded surface, Sainte Croix Quarry, C 36043, × 60.
- Fig. 13 *Cycloloculina jarvisi* Cushman  
Soldado Rock, K. 3692 (same specimen as Pl. 29:3), C 31049, × 17.,
- Fig. 14 *Amphistegina pregrimsdalei* Caudri p. 1234  
Farallon Rock, C 35944, × 30.
- Fig. 15 *Amphistegina grimsdalei* Caudri, common form p. 1234  
Soldado Rock, K. 3677, C 31173, × 30.
- Fig. 16 *Amphistegina grimsdalei* Caudri p. 1234  
flat flaring form, Soldado Rock, K. 3677, C 31089, × 30.
- Fig. 17 *Helicosteginopsis soldadensis* (Grimsdale) p. 1235  
Soldado Rock, K. 2651, C 31090, × 30.
- Fig. 18 *Eoconuloides senni* (Cushman) p. 1230  
Calyx 50A, 194–199 feet, C 36012, × 30.
- Fig. 19 *Helicocyclina paucispira* (Barker & Grimsdale) p. 1236  
Vistabella Estate, E.L. 1435, C 35940, × 30.



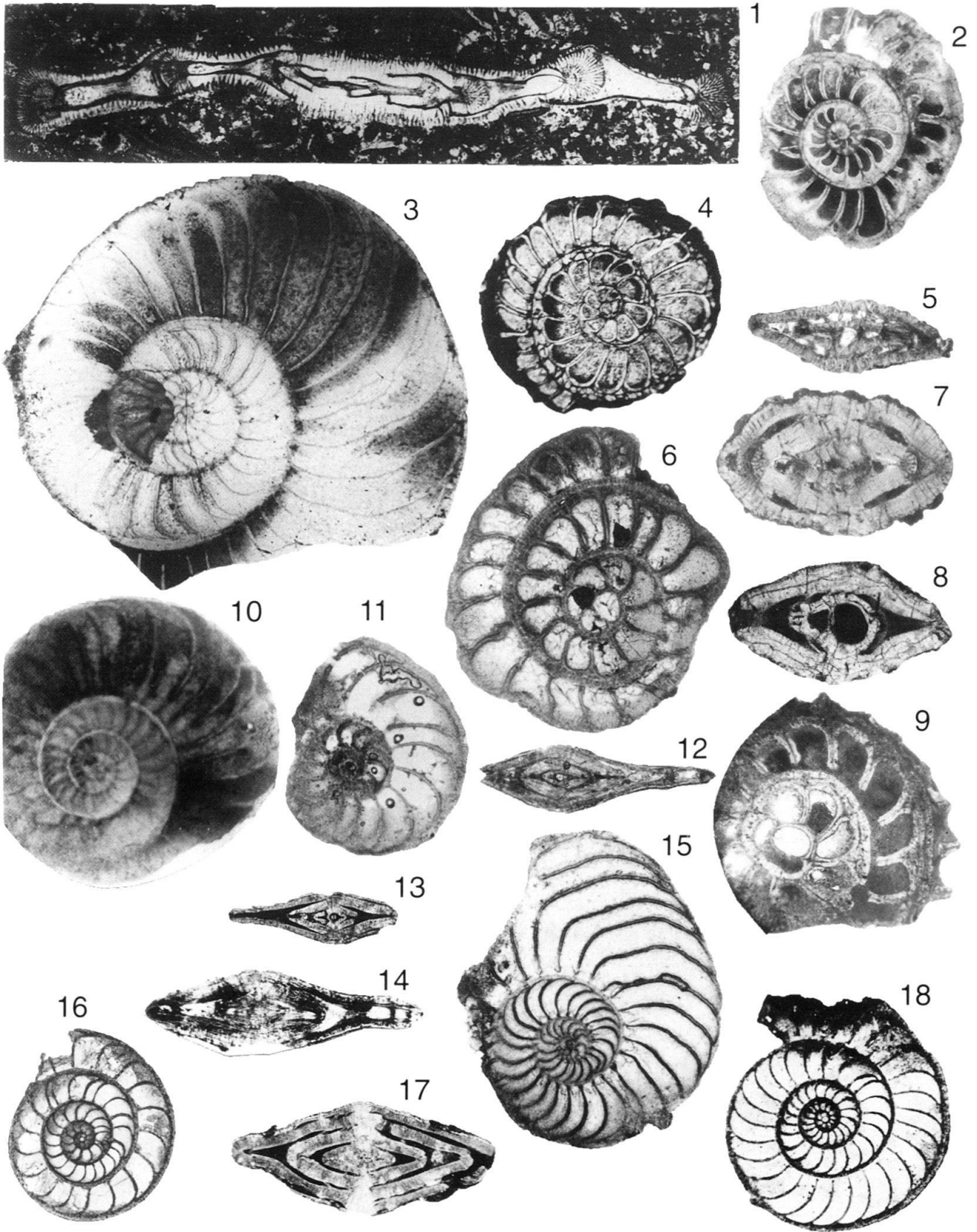
Plate 8



### Plate 9

- Fig. 1 *Ranikothalia soldadensis* (Vaughan & Cole) p. 1185  
vertical section in rock matrix, Soldado Rock, Rz. 248, C 31227,  $\times 9$ .
- Fig. 2 *Ranikothalia tobleri* (Vaughan & Cole), B-form p. 1183  
Dunmore Hill, R.M.C. 2907 (reworked), Collection Shell in the Hague,  $\times 17$ .
- Fig. 3 *Operculina bontourensis* Caudri, n. sp. p. 1185  
Point Bontour, St. 63 (reworked), C 36078,  $\times 17$ .
- Fig. 4 *Ranikothalia tobleri* (Vaughan & Cole), A-form p. 1183  
canal system showing, boulder in Stollmeyer Quarry, Grimsdale 43,  $\times 17$ .
- Fig. 5 *Ranikothalia tobleri* (Vaughan & Cole) p. 1183  
Lizard Springs, Mky 102b III, U.S.N.M. Washington,  $\times 17$ .
- Fig. 6 *Ranikothalia antillea* (Hanzawa) p. 1183  
Lizard Springs, Mky 102b III, U.S.N.M. Washington,  $\times 17$ .
- Fig. 7 *Ranikothalia antillea* (Hanzawa) p. 1183  
Lizard Springs, Mky 102b III, U.S.N.M. Washington,  $\times 17$ .
- Fig. 8 *Ranikothalia antillea* (Hanzawa) p. 1183  
(reworked), Point Bontour, Cd. 18,  $\times 17$ .
- Fig. 9 *Ranikothalia antillea* (Hanzawa) p. 1183  
(reworked), Point Bontour, St. 85,  $\times 17$ .
- Fig. 10 *Operculina bontourensis* Caudri, n. sp. p. 1185  
(reworked), Point Bontour, St. 63,  $\times 17$ .
- Fig. 11 *Operculinoides ocalanus* (Cushman) Hanzawa p. 1187  
Vistabella area, St. 45, C 31250,  $\times 17$ .
- Fig. 12 *Operculinoides ocalanus* (Cushman) Hanzawa p. 1187  
Soldado Rock, J.S. 1950, C 31246,  $\times 17$ .
- Fig. 13 *Operculinoides ocalanus* (Cushman) Hanzawa p. 1187  
Point Bontour, St. 63, C 36033,  $\times 17$ .
- Fig. 14 *Operculinoides soldadensis* Vaughan & Cole p. 1187  
Soldado Rock, K. 3692, C 31179,  $\times 17$ .
- Fig. 15 *Operculinoides soldadensis* Vaughan & Cole p. 1187  
Soldado Rock, J.S. 1950, C 31244,  $\times 17$ .
- Fig. 16 *Operculinoides trinitatis* (Nuttall) p. 1188  
granulated form, Soldado Rock, K. 2855, C 31126,  $\times 17$ .
- Fig. 17 *Operculinoides trinitatis* (Nuttall) p. 1188  
smooth form, Point Bontour, St. 63, C 31253,  $\times 17$ .
- Fig. 18 *Operculinoides spiralis* Caudri, holotype p. 1189  
Soldado Rock, K. 2651, C 31092,  $\times 17$ .

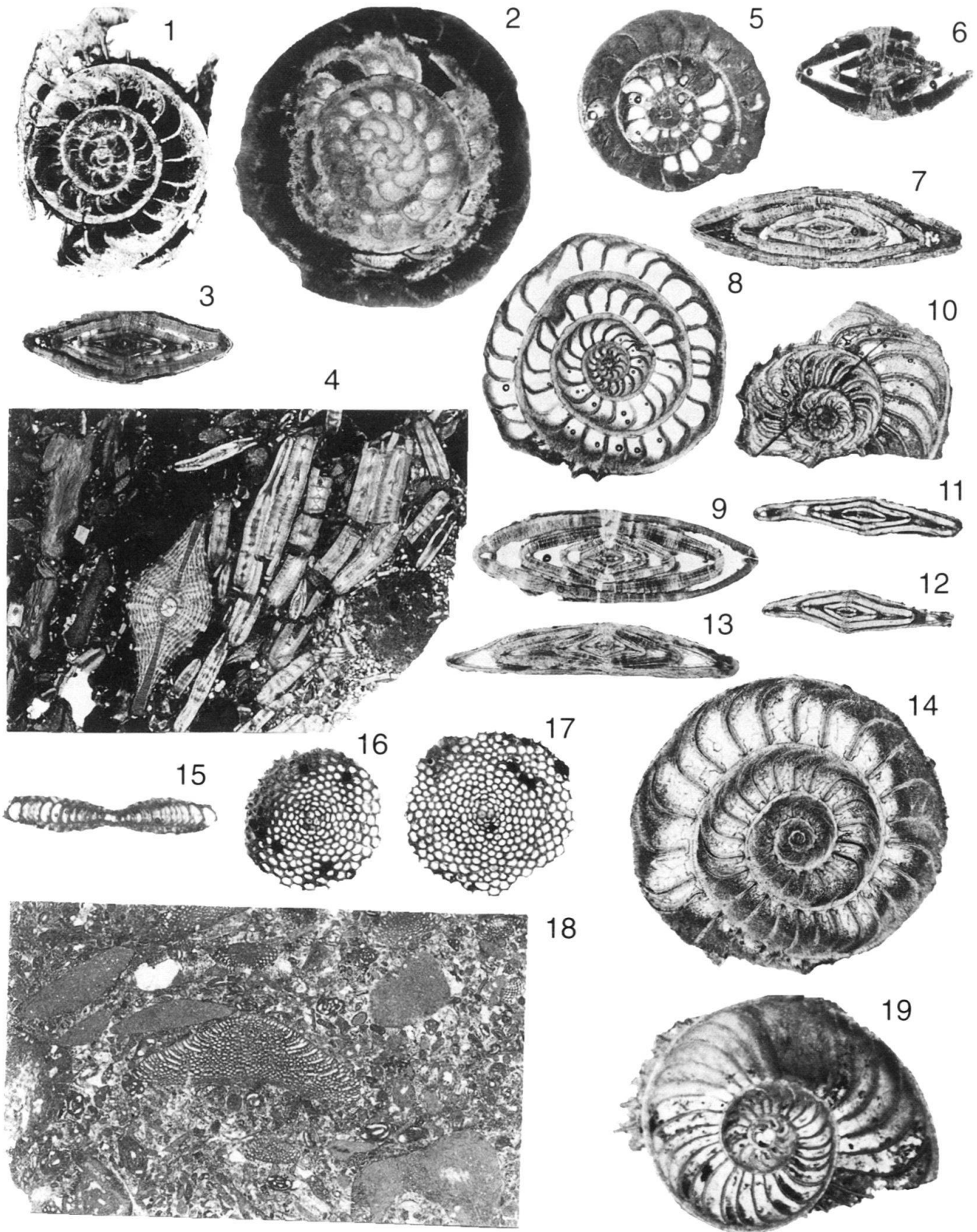
Plate 9



### Plate 10

- |            |   |         |
|------------|---|---------|
| Fig. 1     | <i>Operculinoides kugleri</i> Vaughan & Cole<br>Point Bontour, St. 63, C 36040, × 17.   | p. 1188 |
| Fig. 2     | <i>Nummulites striatoreticulatus</i> (Rutten)<br>Point Bontour, St. 63, C 35962, × 17.  | p. 1192 |
| Fig. 3     | <i>Operculinoides kugleri</i> Vaughan & Cole<br>Point Bontour, St. 63, C 36085, × 17.   | p. 1188 |
| Fig. 4     | Random section through the <i>Operculina</i> -limestone<br>on the Coora-Quinam Road, including one of the rare <i>Lepidocyclinas</i> , C 36071, × 9.    |         |
| Fig. 5–6   | <i>Operculinoides semmesi</i> Vaughan & Cole<br>Morne Diablo Quarry, K. 2667, C 35957 (Fig. 5), C 36086 (Fig. 6), × 17.                                 | p. 1190 |
| Fig. 7–9   | <i>Operculinoides semmesi ciperensis</i> Vaughan & Cole<br>Cipero Coast, Cd. 26, C 35956 (Fig. 7), C 36129 (Fig. 8), C 36130 (Fig. 9), × 17.            | p. 1190 |
| Fig. 10–12 | <i>Operculinoides cojimarensis</i> (Palmer), B-form<br>Morne Diablo Quarry, K.S. 122, C 36031 (Fig. 10), C 36087 (Fig. 11), C 36088<br>(Fig. 12), × 17. | p. 1191 |
| Fig. 13–14 | <i>Operculinoides bullbrooki</i> Vaughan & Cole<br>Morne Diablo Quarry, E.L. 1178, C 35953 (Fig. 13), C 36126 (Fig. 14), × 17.                          | p. 1191 |
| Fig. 15–17 | <i>Planorbulinella trinitatensis</i> (Nuttall)<br>Biche Quarry, C 36057 (Fig. 15), C 36056 (Fig. 16), C 36127 (Fig. 17), × 17.                          | p. 1237 |
| Fig. 18    | <i>Orbitolina</i> -limestone<br>Quinam, Hg. 769, C 36070, × 9.  |         |
| Fig. 19    | <i>Operculinoides suteri</i> Caudri, n. sp.<br>exceptionally large specimen, San Fernando Railway Station, Cd. 208, C 36029, × 17.                      | p. 1189 |

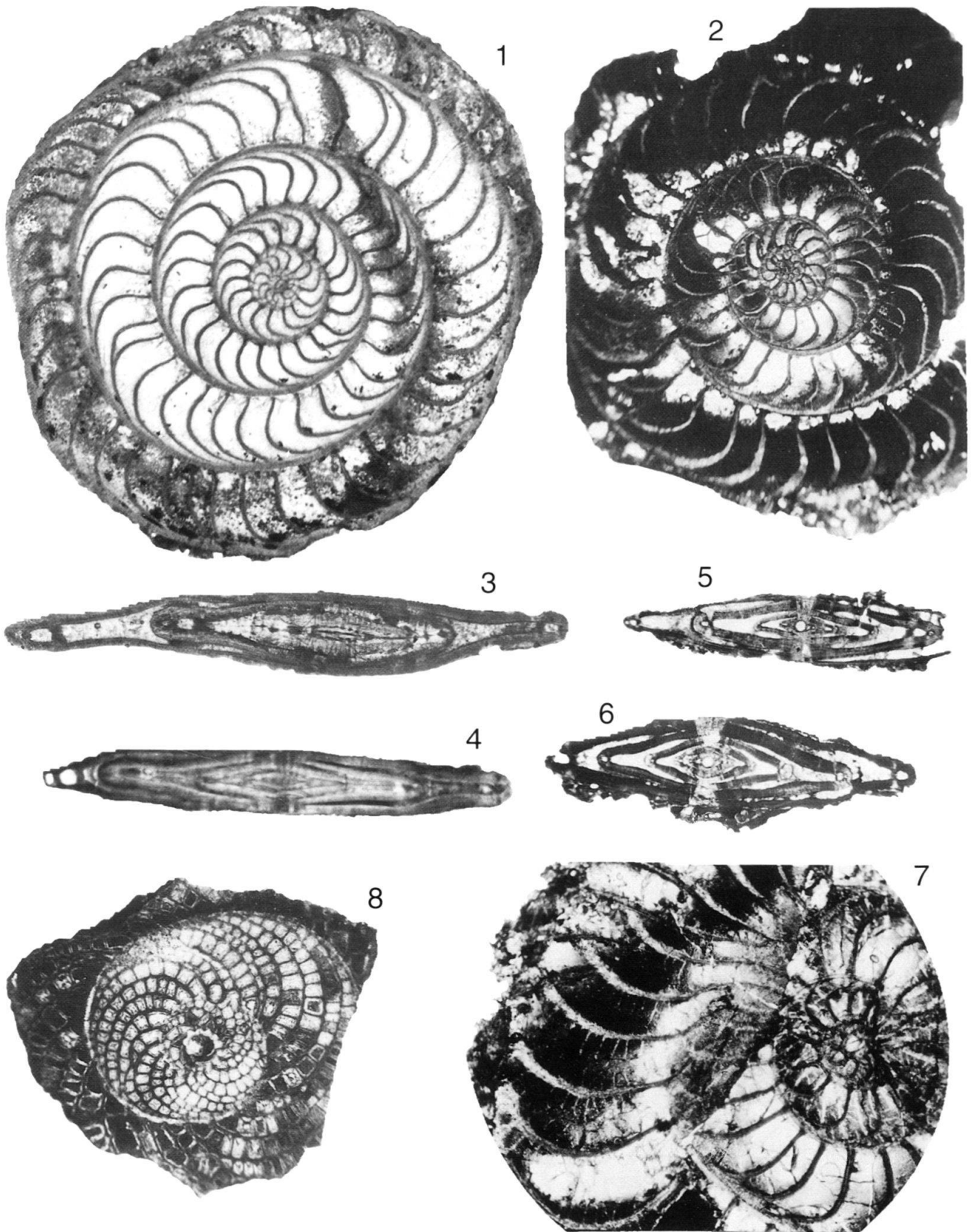
Plate 10



**Plate 11**

- Fig. 1 *Operculinoides tuxpamensis* (Thalmann) Cole p. 1192  
Biche Quarry, C 36058,  $\times 17$ .
- Fig. 2 *Operculinoides tamanensis* Vaughan & Cole, topohyle p. 1192  
Central Range, Tamana-Carmichael Road, K.R. 7541, C 36047,  $\times 17$ .
- Fig. 3–4 *Operculinoides tuxpamensis* (Thalmann) Cole p. 1192  
without central plug, Biche Quarry, C 35959 (Fig. 3), C 36059 (Fig. 4),  $\times 17$ .
- Fig. 5–6 *Operculinoides tamanensis* Vaughan & Cole p. 1192  
topohyle, with central plug, Tamana-Carmichael Road, K.R. 7541, C 36048 (Fig. 5), C 36090 (Fig. 6),  $\times 17$ .
- Fig. 7 *Operculinoides tamanensis* Vaughan & Cole p. 1192  
topohyle, with heterosteginoid subdivisions, Tamana-Carmichael Road, K.R. 7541, C 36089,  $\times 17$ .
- Fig. 8 *Heterostegina antillea* Cushman  
Charuma, A.E.G. 5183A, C 35963,  $\times 17$ .

Plate 11

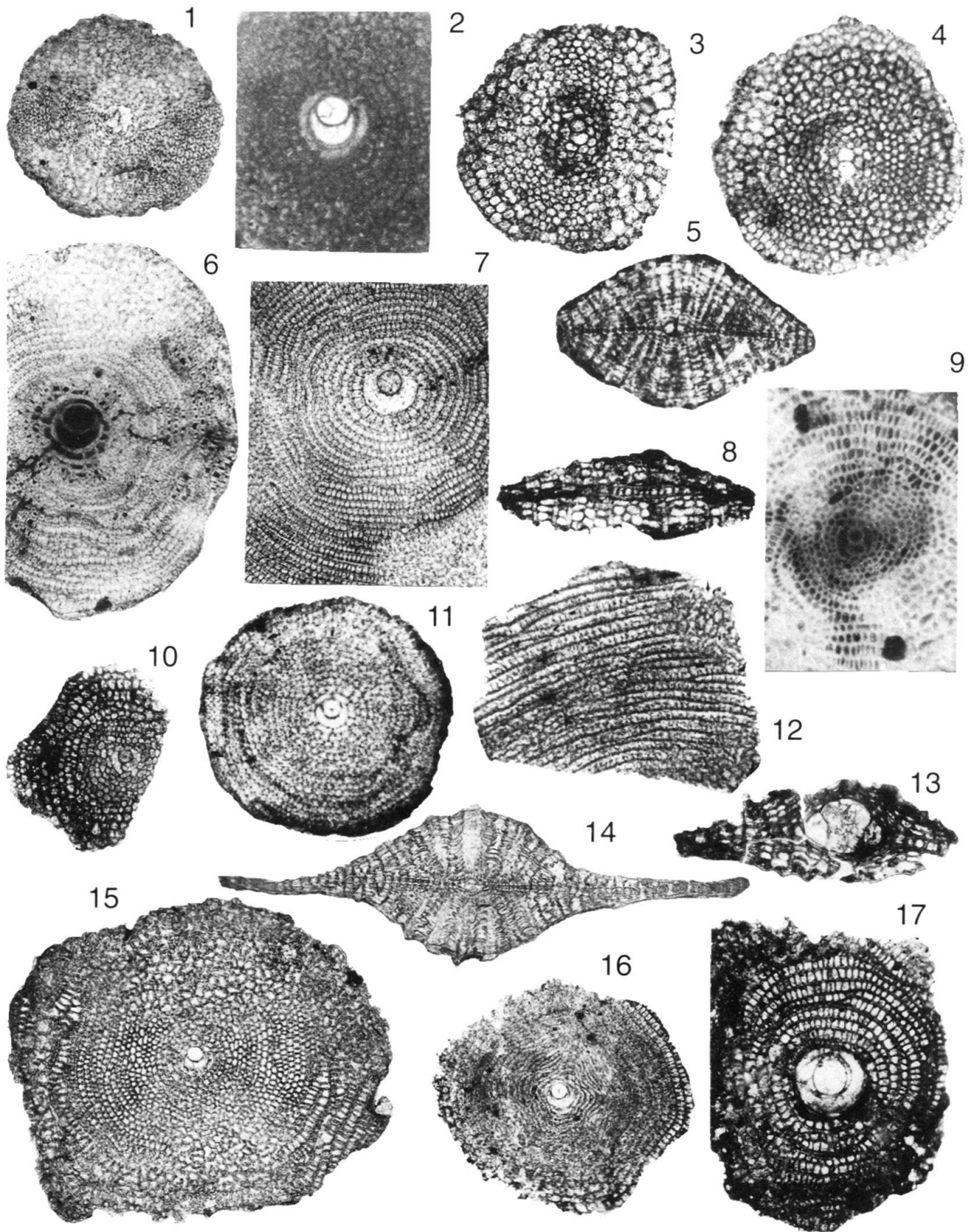


### Plate 12

- Fig. 1 *Actinosiphon barbadensis* (Vaughan) p. 1210  
Point Bontour, St. 63 (reworked), C 31255, × 34.
- Fig. 2 *Neodiscocyclina fonslacertensis* (Vaughan) p. 1204  
Lizard Springs, Mky 102b III, U.S.N.M., Washington, × 34.
- Fig. 3 *Hexagonocyclina inflata* Caudri p. 1203  
Point Bontour, St. 67 (reworked), C 31256, × 34.
- Fig. 4 *Hexagonocyclina inflata* Caudri, holotype p. 1203  
Point Bontour, Cd. 18 (reworked), after Caudri 1948, Pl. 74:5, × 34.
- Fig. 5 *Hexagonocyclina inflata* Caudri p. 1203  
Point Bontour, Cd. 18 (reworked), after Caudri 1948, Pl. 73:6, × 34.
- Fig. 6 *Neodiscocyclina aguerreveri* (Caudri) p. 1203  
Point Bontour, Cd. 18 (reworked), C 36009, × 34.
- Fig. 7 *Neodiscocyclina grimsdalei* (Vaughan & Cole) p. 1203  
Soldado Rock, K. 2950, U.S.N.M., Washington, × 34.
- Fig. 8 *Neodiscocyclina anconensis* (Barker) p. 1204  
Biche Calyx 50A, 232–233 feet, C 36008, × 34.
- Fig. 9 *Hexagonocyclina meandrica* Caudri p. 1202  
Lizard Springs, Mky 102b III, U.S.N.M., Washington, ¥ 34.
- Fig. 10 *Hexagonocyclina meandrica* Caudri p. 1202  
Soldado Rock, K. 2950, C 31134, × 34.
- Fig. 11 *Neodiscocyclina barkeri* (Vaughan & Cole) p. 1205  
Soldado Rock, K. 2951, C 31146, × 34.
- Fig. 12 *Stenocyclina* sp. (fragment)  
Dunmore Hill, Ha. 215, C 36068 (different fragment), × 34.
- Fig. 13 *Neodiscocyclina anconensis* (Barker) p. 1204  
Biche Calyx 50A, 232–233 feet, C 36091, ¥× 34.
- Fig. 14–15 *Neodiscocyclina caudriae* (Vaughan) p. 1205  
Lizard Springs, Mky 102b III, U.S.N.M., Washington, × 36.
- Fig. 16 *Neodiscocyclina barkeri* (Vaughan & Cole) p. 1205  
with polygonal equatorial arrangement, Soldado Rock, K. 2951, C 31137, × 34.
- Fig. 17 *Neodiscocyclina anconensis* (Barker) p. 1204  
Biche Calyx 50A, 232–233 feet, C 36092, × 34.



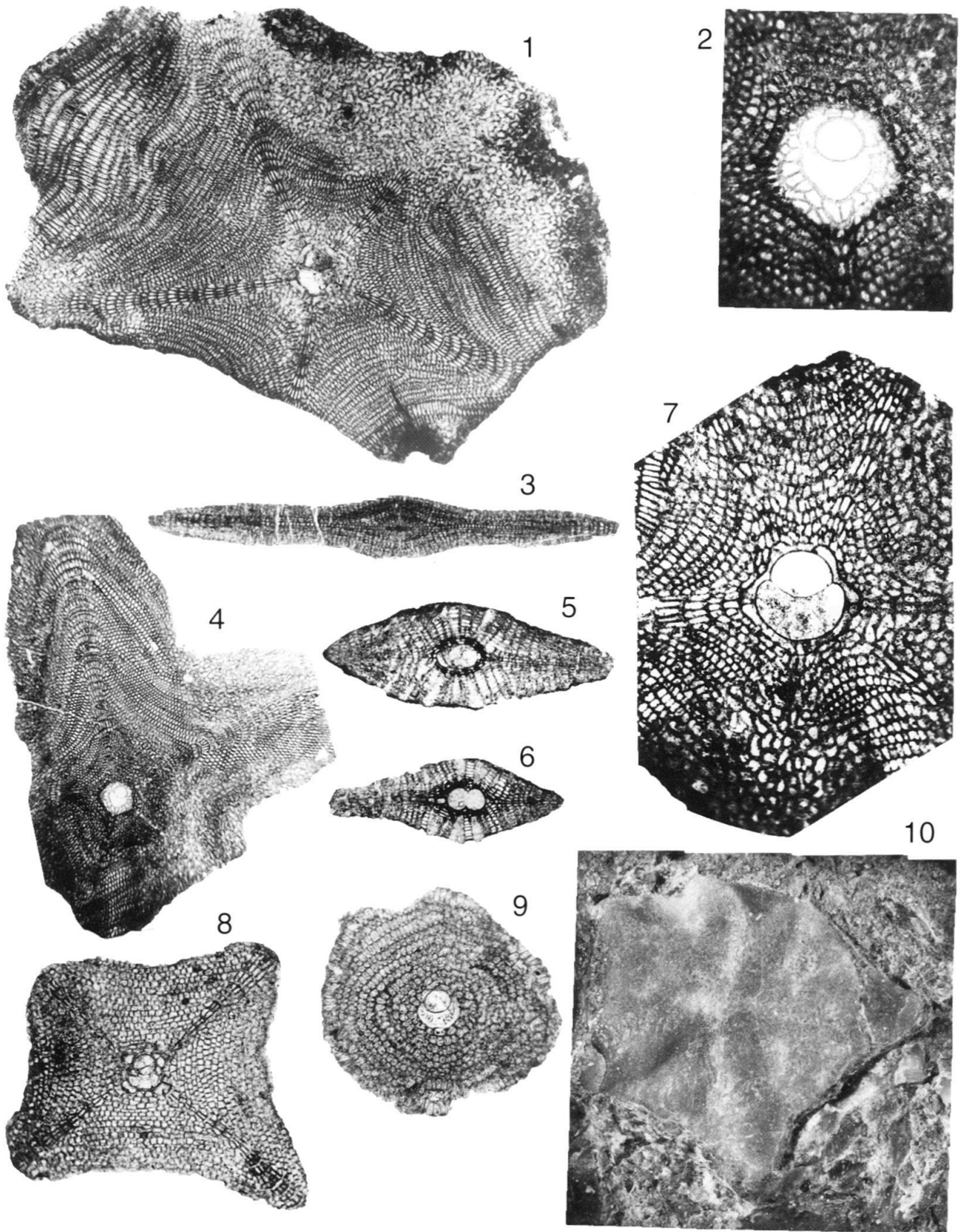
Plate 12



**Plate 13**

- Fig. 1 *Asterocyclina soldadensis* Caudri p. 1209  
Navette area, R.M. 1337, C 35949,  $\times 9$ .
- Fig. 2 *Asterocyclina asterisca* (Guppy), typical nepiont p. 1207  
Soldado Rock, K. 2854, same specimen as Fig. 4, probably in Shell's collection in  
the Hague,  $\times 68$ .
- Fig. 3 *Asterocyclina asterisca* (Guppy) p. 1207  
Soldado Rock, K. 2854, C 31120,  $\times 17$ .
- Fig. 4 *Asterocyclina asterisca* (Guppy) p. 1207  
see Fig. 2, Soldado Rock, K. 2854, probably in Shell's collection in the Hague,  $\times 17$ .
- Fig. 5–6 *Asterocyclina soldadensis* Caudri p. 1209  
Soldado Rock, K. 2651, C 31095 (Fig. 5), C 31096 (Fig. 6),  $\times 17$ .
- Fig. 7 *Asterocyclina soldadensis* Caudri p. 1209  
embryonic and perieembryonic chambers, Soldado Rock, K. 2651, C 31094,  $\times 34$ .
- Fig. 8 *Asterocyclina ruteni* Vaughan p. 1208  
Point Bontour, St. 46, C 36063,  $\times 34$ .
- Fig. 9 *Neodiscocyclina bullbrooki* (Vaughan & Cole), A-form p. 1204  
Point Bontour, St. 67 (reworked), C 36010,  $\times 34$ .
- Fig. 10 *Asterocyclina vaughani* (Cushman) (type material) p. 1208  
Point Bontour, C 35950,  $\times 9$ .

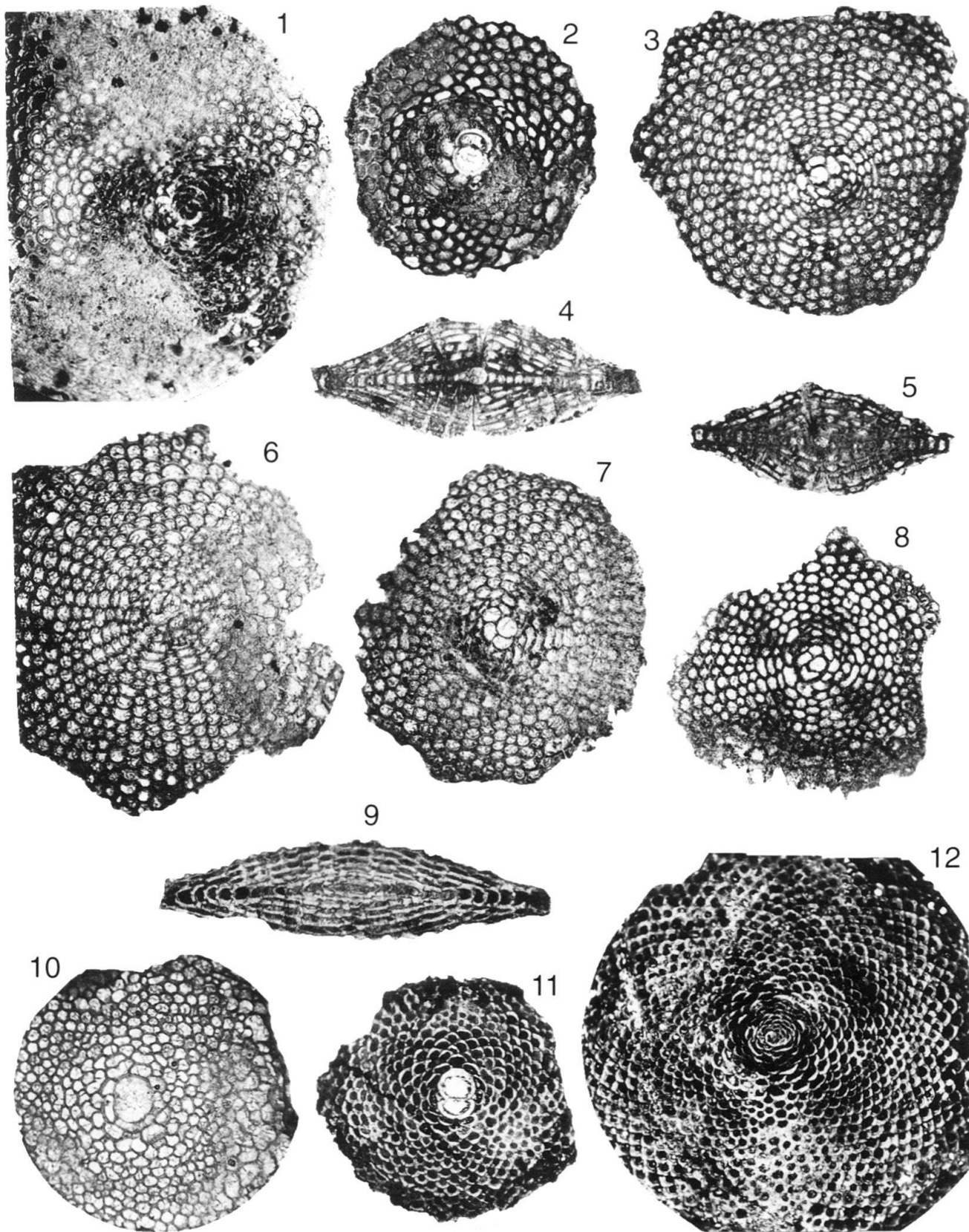
Plate 13



**Plate 14**

- Fig. 1 *Helicolepidina* cf. *nortoni* Vaughan, B-form p. 1233  
Charuma, A.E.G. 1580A, C 35929, × 30.
- Fig. 2 *Helicolepidina* cf. *nortoni* Vaughan, A-form p. 1233  
Vistabella Calyx 59, 500–510 feet, C 35928, × 30.
- Fig. 3, 6–8 *Lepidocyclina* (*Polylepidina*) *nitida* Caudri, n. sp. p. 1215  
horizontal sections, Farallon Rock, coll. Stainforth, Renz & Rutsch 1939,  
C 36080 (Fig. 3), C 36081–36083 (Fig. 6–8), × 30.
- Fig. 4–5 *Lepidocyclina* (*Polylepidina*) *nitida* Caudri, n. sp. p. 1215  
vertical sections, Farallon Rock, same locality, C 35931 (Fig. 4), C 36084 (Fig. 5), × 30.
- Fig. 9 *Lepidocyclina* (*Polylepidina*)? *vichayalensis* L. Rutten p. 1217  
Point Bontour, St. 63, C 35932, × 30.
- Fig. 10 *Lepidocyclina* (?*Polylepidina*) *proteiformis* Vaughan p. 1217  
Point Bontour, St. 63, C 35935, × 30.
- Fig. 11 *Lepidocyclina* (*Polylepidina*) *vichayalensis* L. Rutten p. 1217  
A-form, Mount Moriah near Dr. Krogh's house (note stolon system), M. 12923,  
C 35934, × 30.
- Fig. 12 *Lepidocyclina* (*Polylepidina*) *vichayalensis* L. Rutten p. 1217  
B-form, Charuma, A.E.G. 1580A, C 35933, × 30.

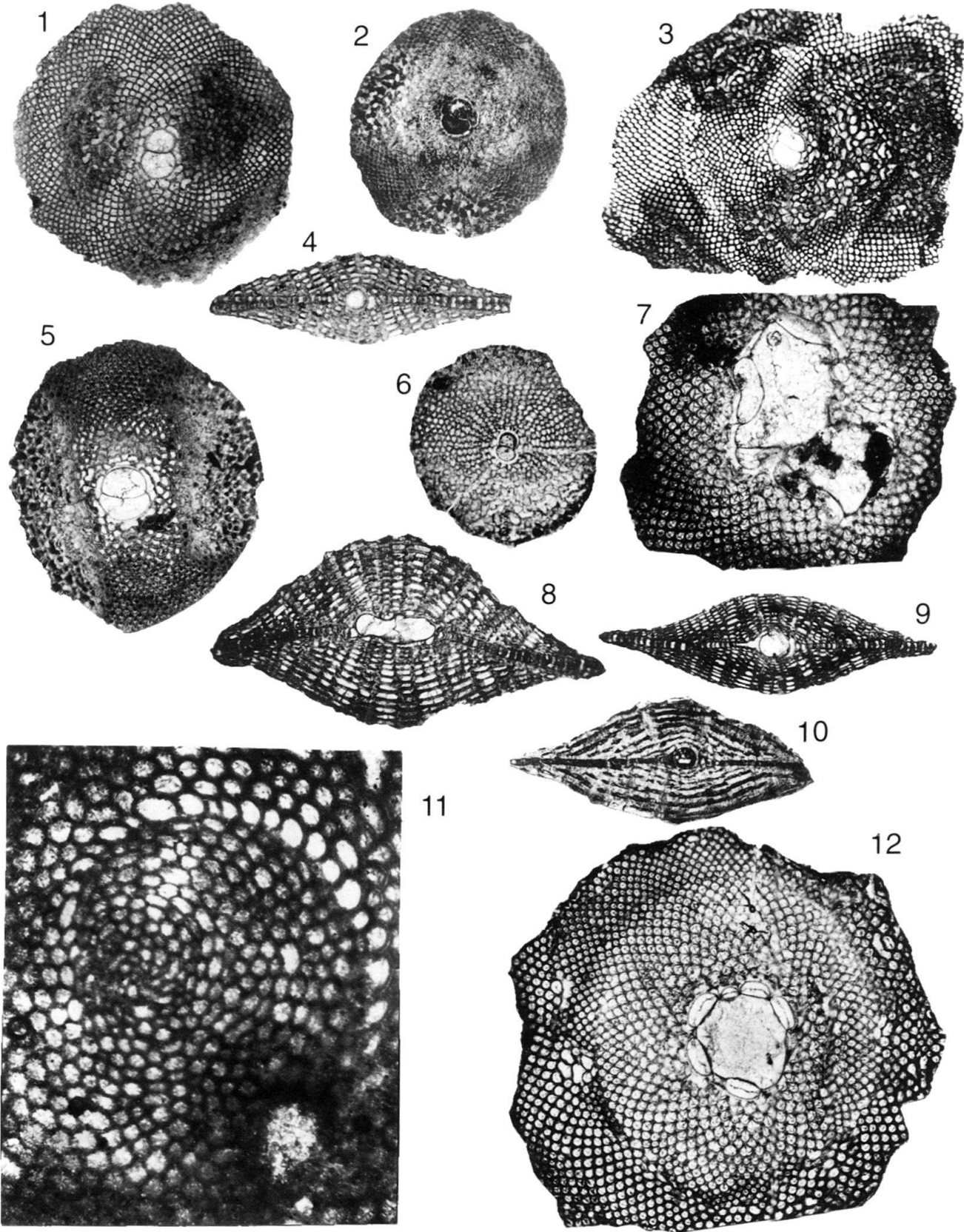
Plate 14



### Plate 15

- Fig. 1 *Lepidocyclina pustulosa* (H. Douvillé), s. s. p. 1218  
Soldado Rock, J.S. 1950, C 31245, × 17.
- Fig. 2 *Lepidocyclina pustulosa compacta* Caudri p. 1219  
holotype, Point Bontour, St. 63, C 31252, × 17.
- Fig. 3 *Lepidocyclina pustulosa trinitatis* (H. Douvillé) p. 1219  
Soldado Rock, K. 2854, C 31113, × 17.
- Fig. 4 *Lepidocyclina peruviana* Cushman p. 1217  
with split equatorial layer, Soldado Rock, K. 1500, C 31079, × 17.
- Fig. 5 *Lepidocyclina pustulosa* (H. Douvillé) p. 1218  
with small chambers in the periphery, Cush River, coll. Lehner, × 17.
- Fig. 6 *Lepidocyclina peruviana* Cushman p. 1217  
Soldado Rock, K. 2951B, C 31152, × 17.
- Fig. 7 *Lepidocyclina pustulosa tobleri* (H. Douvillé) p. 1219  
with double completely abnormal embryonic apparatus, Vistabella Quarry, C 36002, × 17.
- Fig. 8 *Lepidocyclina pustulosa* (H. Douvillé), s. s. p. 1218  
Soldado Rock, Rz. 251, C 31230, × 17.
- Fig. 9 *Lepidocyclina pustulosa trinitatis* (H. Douvillé) p. 1219  
Soldado Rock, K. 2854, C 31111, × 17.
- Fig. 10 *Helicolepidina spiralis* Tobler p. 1233  
vertical section, Point Bontour, St. 63, C 35926, × 17.
- Fig. 11 *Helicolepidina spiralis* Tobler p. 1233  
section through the initial spiral (same specimen as Pl. 4:1, compare with Pl. 4:2),  
Point Bontour, St. 63, C 35925, × 50.
- Fig. 12 *Lepidocyclina pustulosa tobleri* (H. Douvillé) p. 1219  
specimen with regular embryonic chambers, Vistabella Quarry, C 36093, × 17.

Plate 15

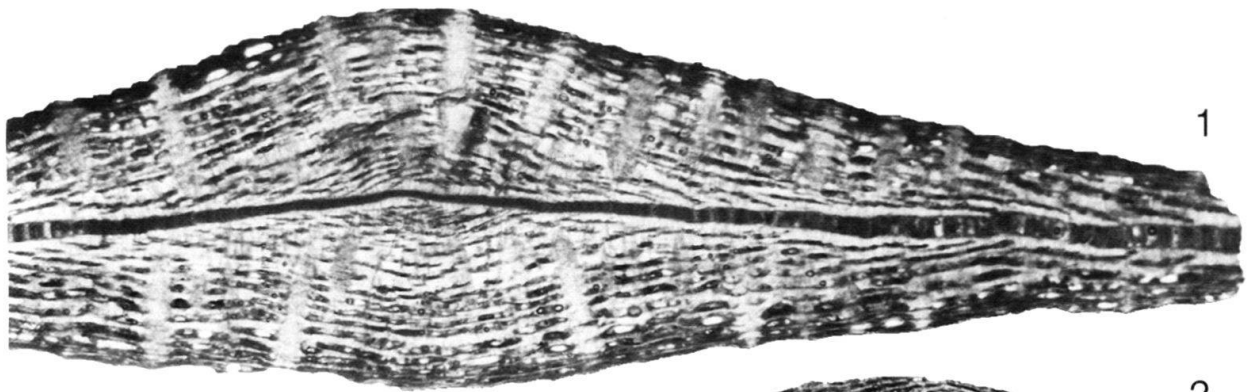


**Plate 16**

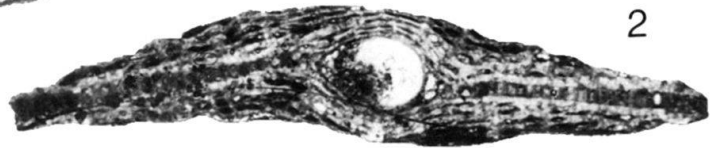
- Fig. 1-4 *Lepidocyclina spatiosa* Caudri, A- and B-forms p. 1220  
Navette area, R.M. 1337, C 35987 (Fig. 1), C 35988 (Fig. 2), C 35989 (Fig. 3),  
C 35990 (Fig. 4), × 17.
- Fig. 5-7 *Lepidocyclina sanfernandensis* Vaughan & Cole p. 1222  
typical form (underdeveloped form, compare with the forma *depressata* Pl.  
3:1-2, 7), Vistabella Reservoir, E.L. 1207, C 35980 (Fig. 5), C 36128 (Fig. 6),  
C 35981 (Fig. 7), × 17.



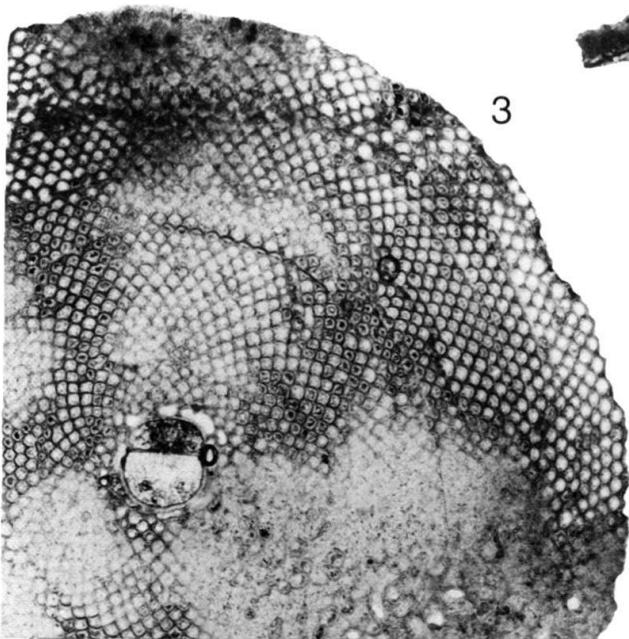
Plate 16



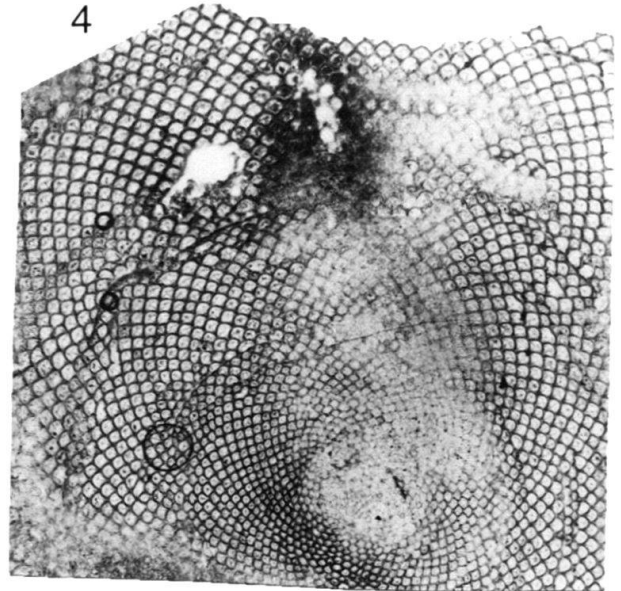
1



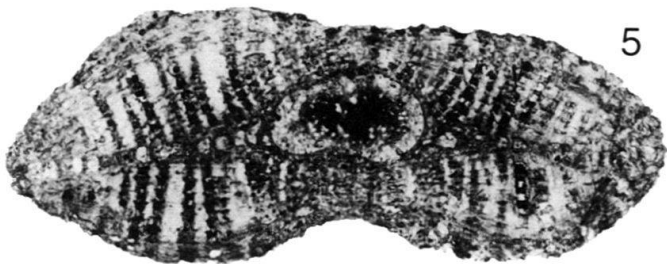
2



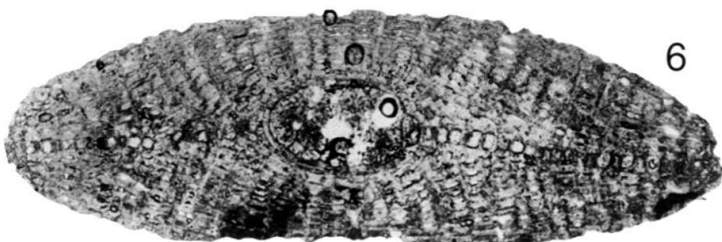
3



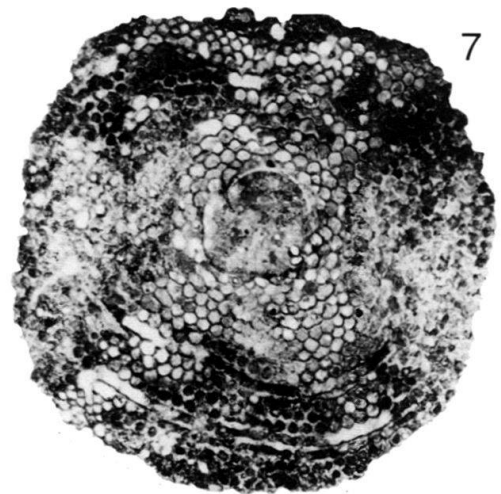
4



5



6

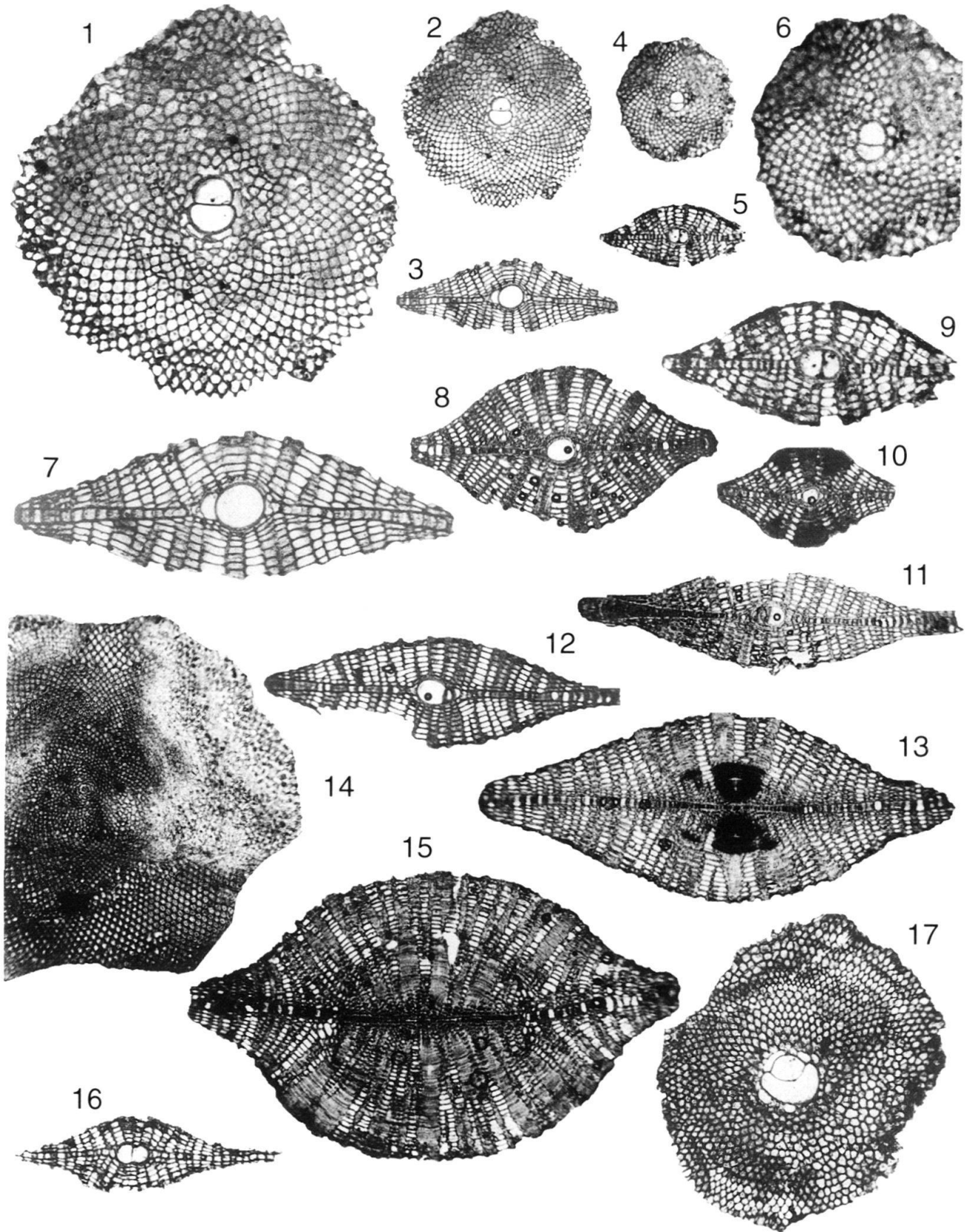


7

### Plate 17

- |            |  |         |
|------------|--|---------|
| Fig. 1–2   | <i>Lepidocyclina yurnagunensis</i> (Cushman)<br>Cipero Coast, C.S. 11, × 34 and × 17.  | p. 1220 |
| Fig. 3, 7  | <i>Lepidocyclina yurnagunensis</i> (Cushman)<br>Cipero Coast, C.S. 11, × 17 (Fig. 3), × 34 (Fig. 7).                               | p. 1220 |
| Fig. 4, 6  | <i>Lepidocyclina subglobosa</i> Nuttall<br>Vistabella, Calyx 59, 380–390 feet, × 17 (Fig. 4), × 34 (Fig. 6).                       | p. 1221 |
| Fig. 5, 9  | <i>Lepidocyclina subglobosa</i> Nuttall<br>Vistabella, E.L. 1435, C 35974, × 17 and × 34 (same specimen).                          | p. 1221 |
| Fig. 8     | <i>Lepidocyclina yurnagunensis</i> (Cushman)<br>Cipero Coast, Grimsdale 2, C 35970, × 17.  | p. 1220 |
| Fig. 10    | <i>Lepidocyclina yurnagunensis marginopsis</i> Vaughan<br>Cipero Coast, C.S. 11, C 35968, × 17.                                    |         |
| Fig. 11    | <i>Lepidocyclina yurnagunensis crassimargo</i> Vaughan<br>Cipero Coast, Grimsdale 2, C 36094, × 17.                                |         |
| Fig. 12    | <i>Lepidocyclina yurnagunensis</i> (Cushman)<br>Cipero Coast, Grimsdale 2, × 17.   | p. 1220 |
| Fig. 13–15 | <i>Lepidocyclina yurnagunensis</i> (Cushman), B-form<br>Cipero Coast, Cd. 26, C 35971 (Fig. 13), C 36095–36096 (Fig. 14–15), × 17. | p. 1220 |
| Fig. 16–17 | <i>Lepidocyclina tempanii</i> Vaughan & Cole<br>Charuma, A.E.G. 4567, C 35976–35977 (Fig. 16–17), × 17.                            | p. 1222 |

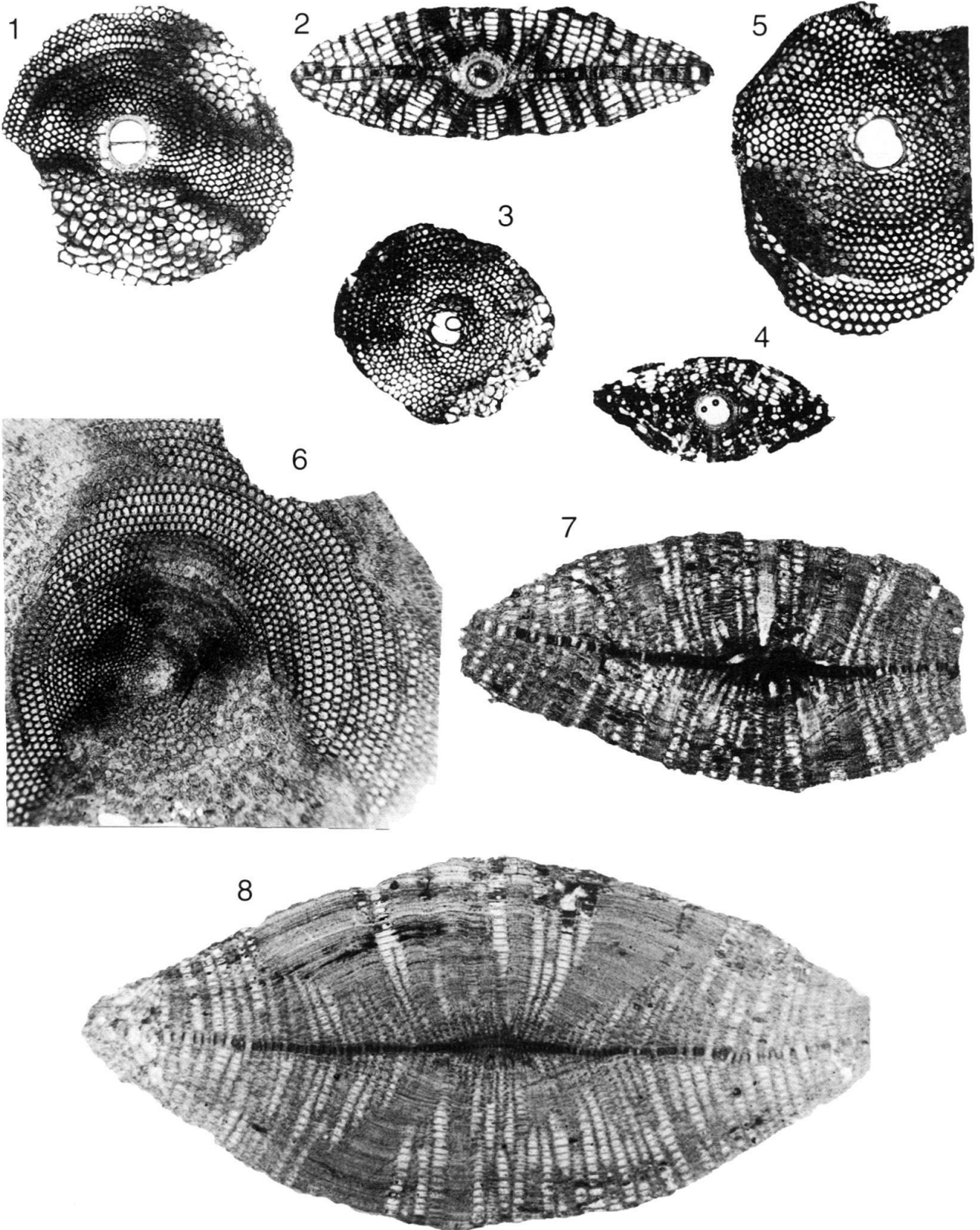
Plate 17



**Plate 18**

- Fig. 1–2 *Lepidocyclina canellei* Lemoine & R. Douvillé p. 1227  
Morne Diablo Quarry, K. 2667, C 35991 (Fig. 1), C 36097 (Fig. 2), × 17.
- Fig. 3–4 *Lepidocyclina pancanalis* Vaughan & Cole p. 1227  
Charuma, A.E.G. 1820, C 35994 (Fig. 3), C 36099 (Fig. 4), × 17.
- Fig. 5 *Lepidocyclina parvula* Cushman, A-form p. 1227  
Morne Diablo Quarry, K.S. 70, C 35996, × 17.
- Fig. 6–7 *Lepidocyclina parvula* Cushman, B-forms p. 1227  
Morne Diablo Quarry, K.S. 21, C 36100–36101 (Fig. 6–7), × 17.
- Fig. 8 *Lepidocyclina giraudi* R. Douvillé p. 1228  
Morne Diablo Quarry, K.S. 21, C 35995, × 17.

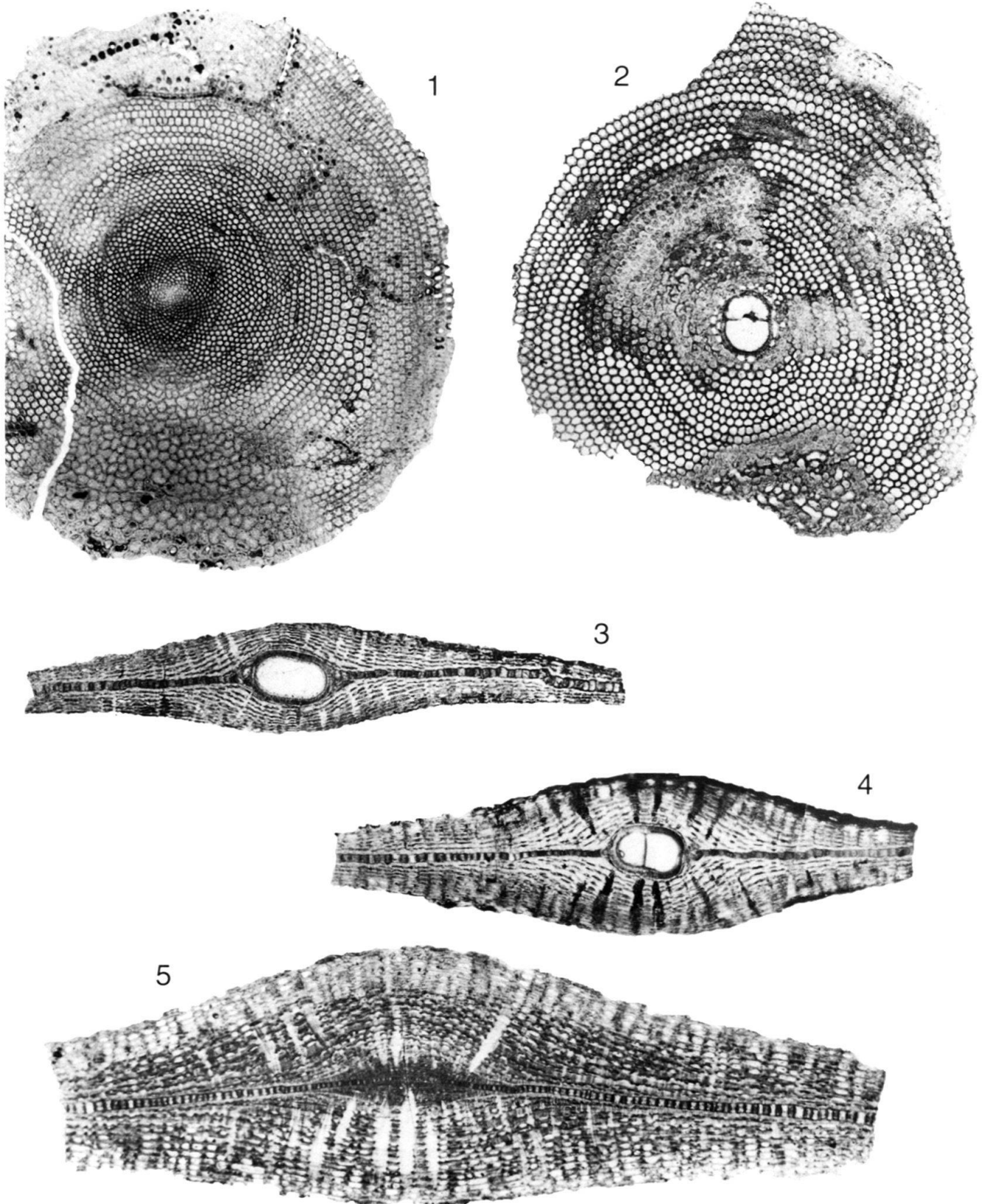
Plate 18



**Plate 19**

- Fig. 1 *Lepidocyclina giraudi* R. Douvillé (same specimen as Pl. 22:4) p. 1228  
Morne Diablo Quarry, K.S. 21, C 36102, × 17.
- Fig. 2 *Lepidocyclina forresti* Vaughan, A-form p. 1226  
Morne Diablo Quarry, K.S. 70, C 36004, × 17.
- Fig. 3 *Lepidocyclina forresti* Vaughan, pillarless A-form p. 1226  
Morne Diablo Quarry, K.S. 70, C 36103, × 17.
- Fig. 4 *Lepidocyclina forresti* Vaughan, pillared A-form p. 1226  
Morne Diablo Quarry, K.S. 70, C 36005, × 17.
- Fig. 5 *Lepidocyclina forresti* Vaughan, pillarless B-form p. 1226  
Morne Diablo Quarry, K.S. 70, C 36006, × 17.

Plate 19



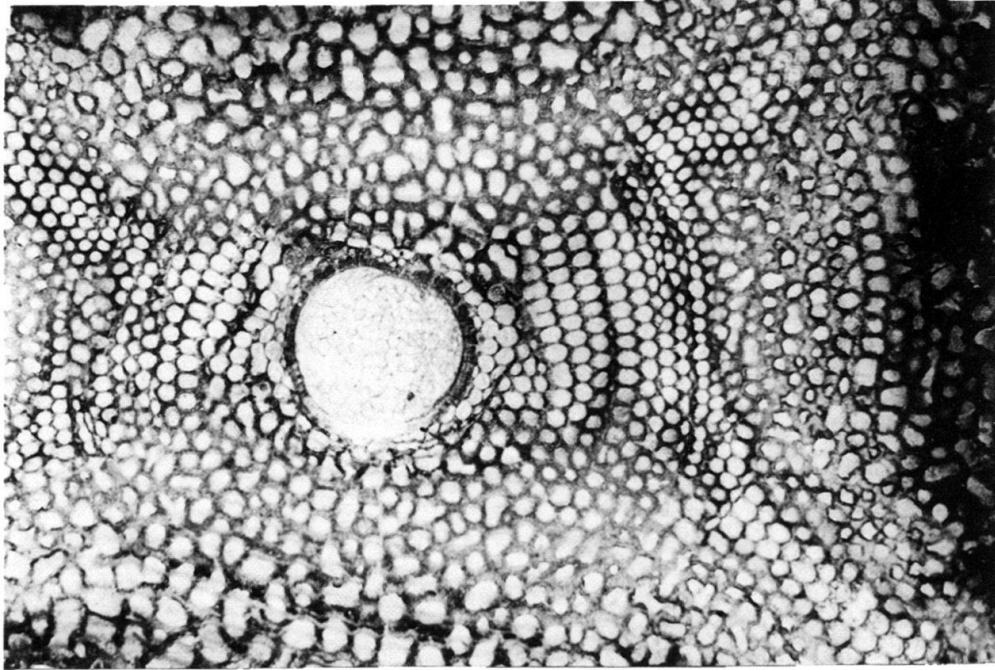
**Plate 20**

- Fig. 1 *Lepidocyclina undosa* Cushman p. 1224  
Kapur Quarry, Lz. 3465, C 35982, × 17.
- Fig. 2 *Lepidocyclina favosa* Cushman p. 1224  
Kapur Quarry, Lz. 3465, C 35984, × 17.
- Fig. 3 *Lepidocyclina favosa* Cushman p. 1224  
Kapur Quarry, Lz. 3465, C 35983, × 8.

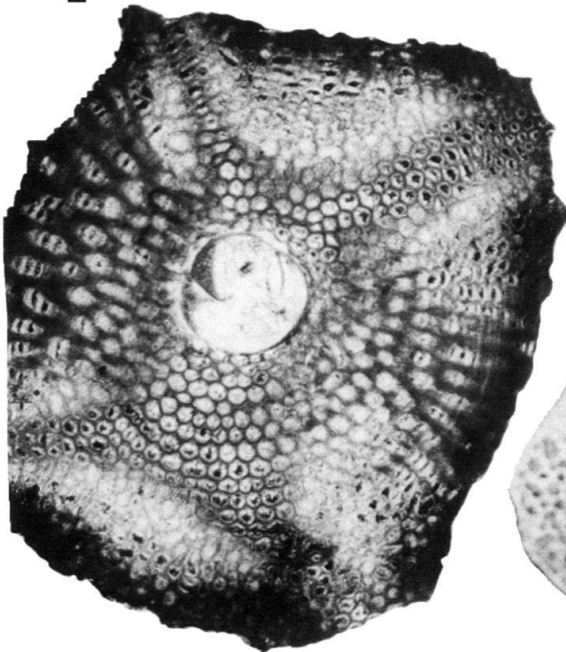


Plate 20

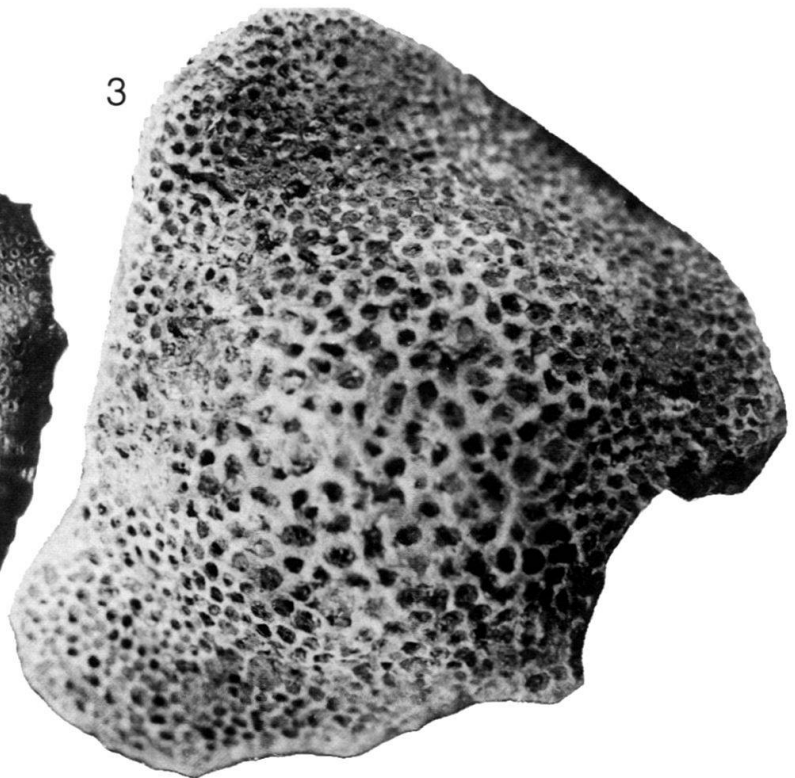
1



2



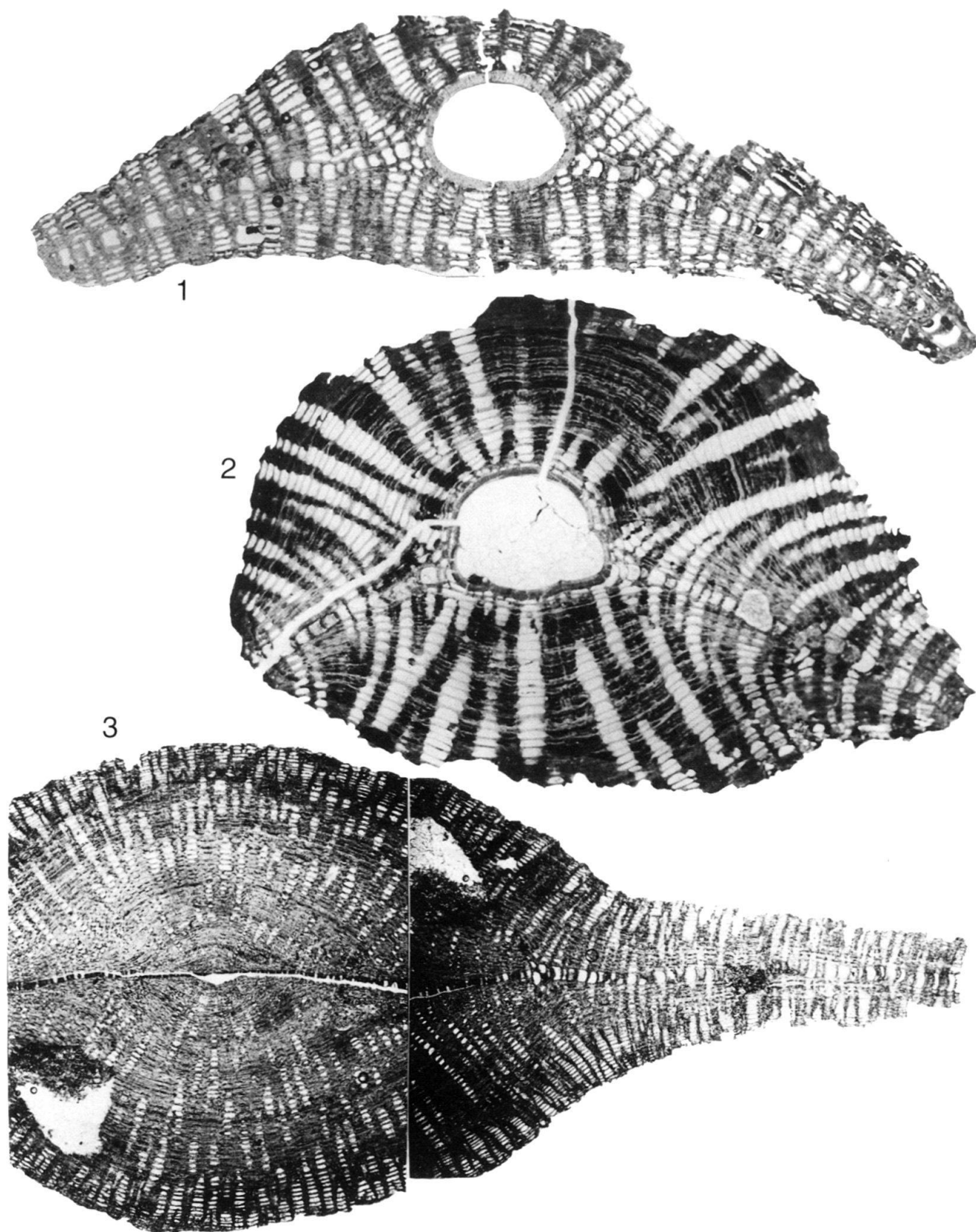
3



**Plate 21**

- Fig. 1 *Lepidocyclina undosa* Cushman p. 1224  
Kapur Quarry, Lz. 3465, C 36105,  $\times 17$ .
- Fig. 2 *Lepidocyclina favosa* Cushman p. 1224  
Kapur Quarry, Lz. 3465, C 36106,  $\times 17$ .
- Fig. 3 *Lepidocyclina gigas* Cushman p. 1224  
Kapur Quarry, Lz. 3465, C 35985,  $\times 8$ .

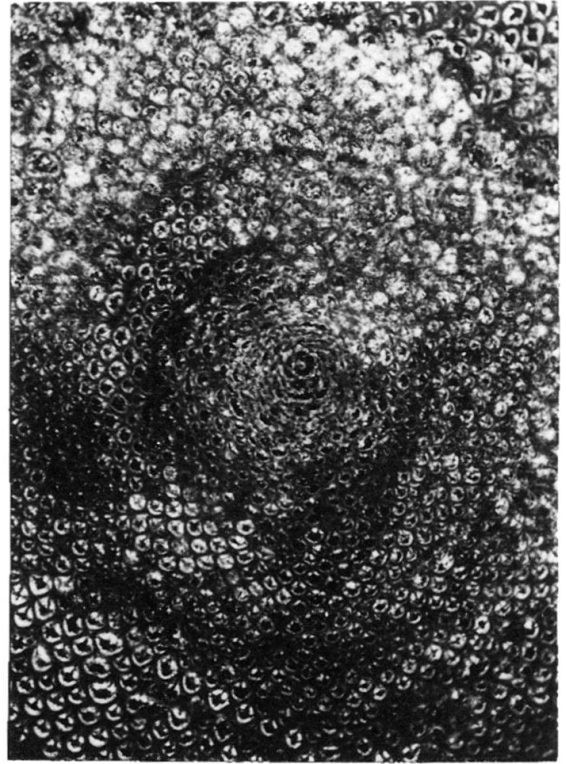
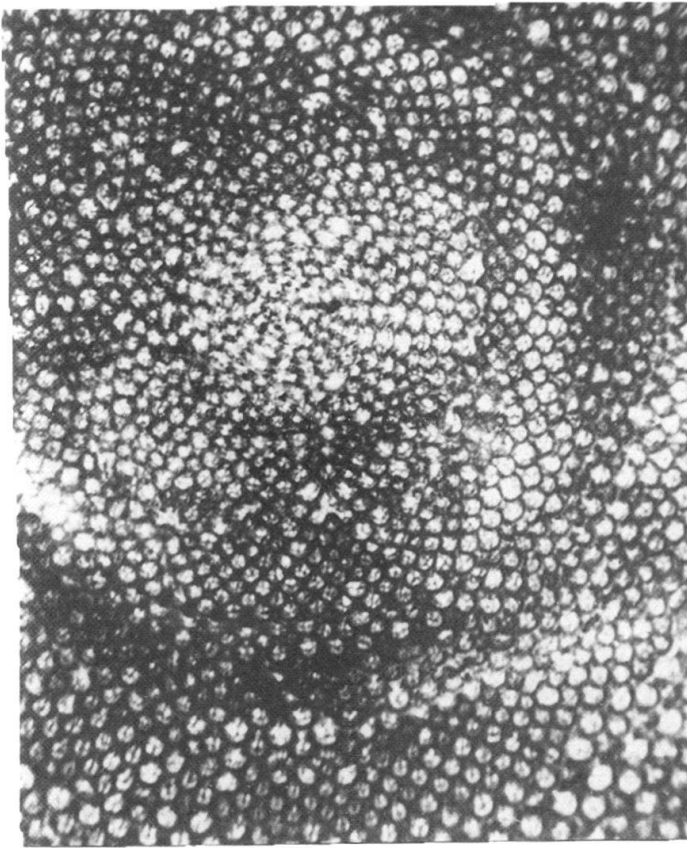
Plate 21



**Plate 22**

- Fig. 1 *Lepidocyclina pustulosa* H. Douvillé, B-form p. 1218  
initial chambers, Vistabella Quarry, C 36001, × 50.
- Fig. 2 *Lepidocyclina pustulosa* H. Douvillé, B-form p. 1218  
initial chambers, Navette area, R.M. 1337, C 36000, × 50.
- Fig. 3 *Lepidocyclina forresti* Vaughan, B-form p. 1226  
initial chambers (helicolepidinoid nepiont), Morne Diablo Quarry, K.S. 71, C 36007, × 50.
- Fig. 4 *Lepidocyclina giraudi* R. Douvillé p. 1228  
initial chambers, Morne Diable Quarry, K.S. 21 (same specimen as Pl. 19:1), C 36102, × 50.

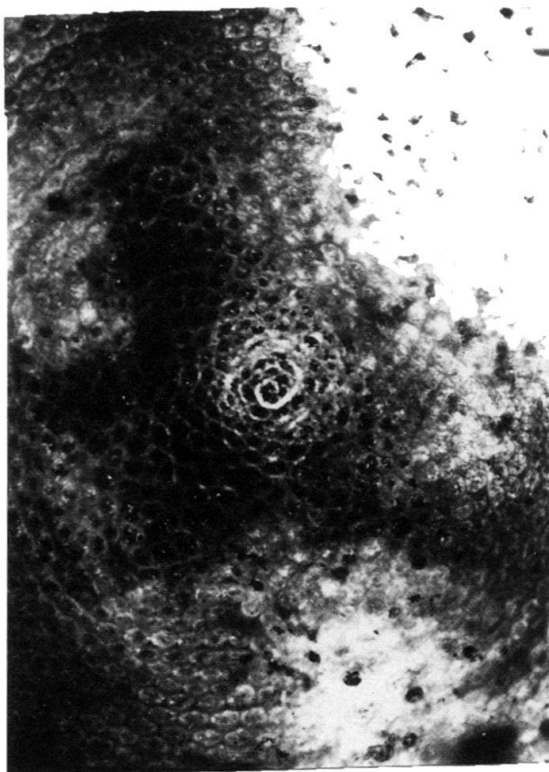
Plate 22



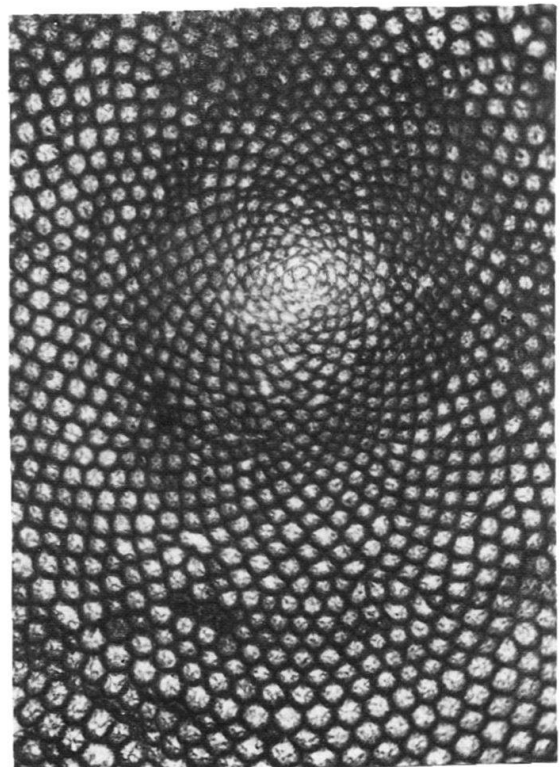
1

2

4



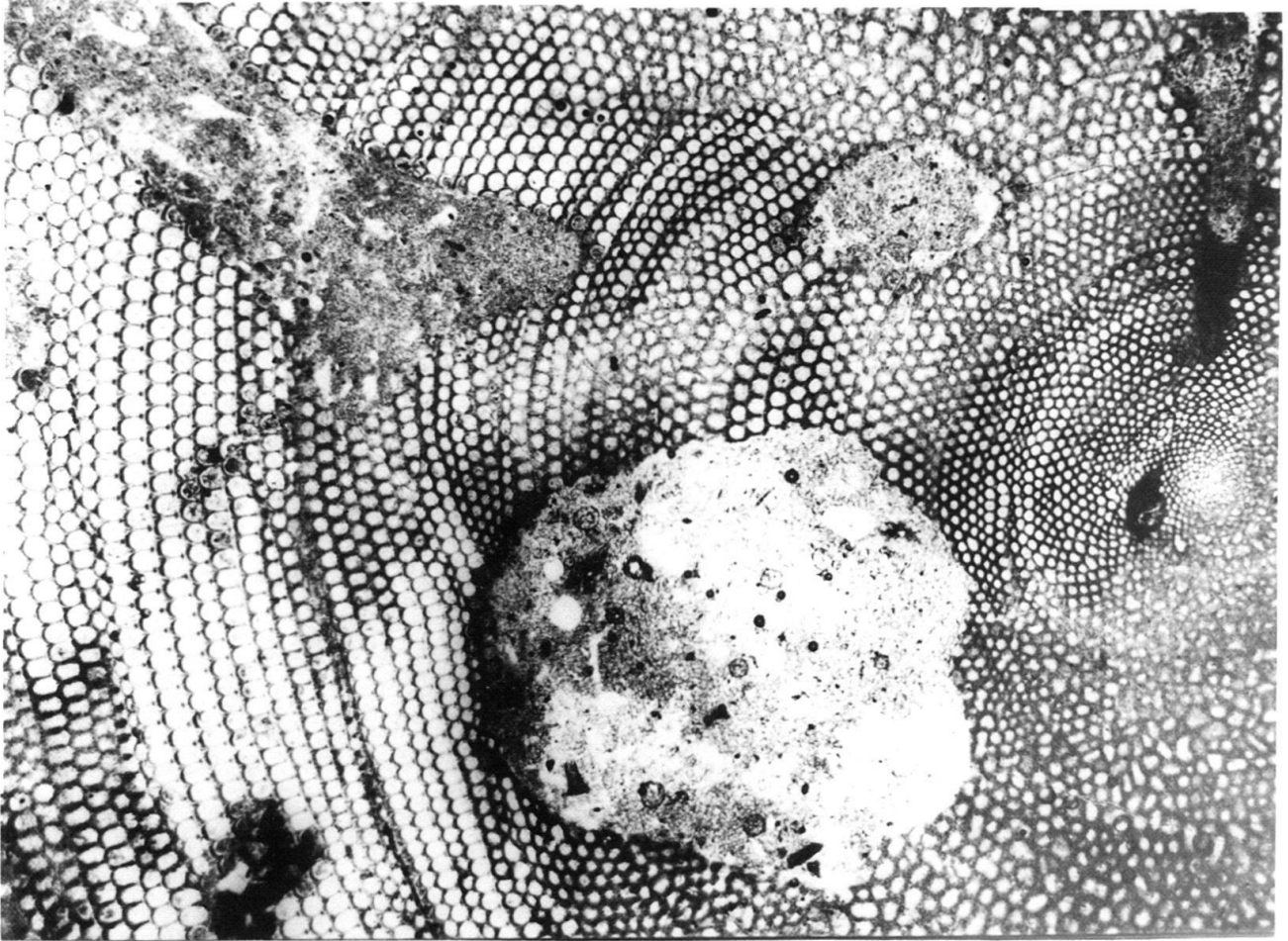
3



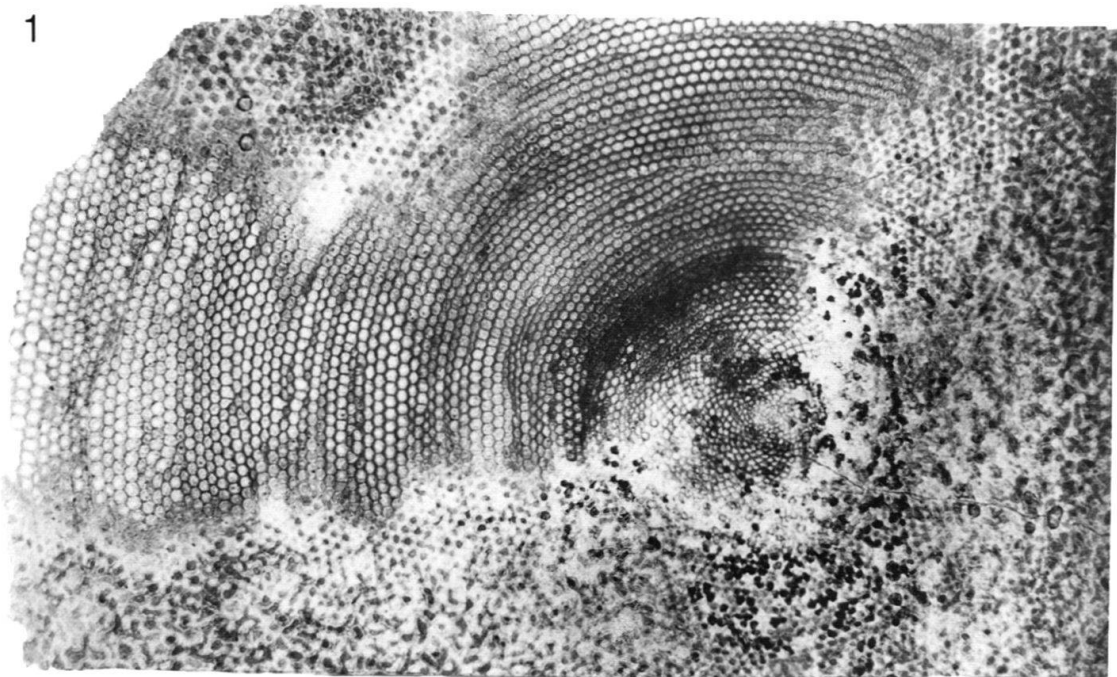
**Plate 23**

- Fig. 1 *Lepidocyclina gigas* Cushman p. 1224  
Kapur Quarry, Lz. 3465, C 35986,  $\times 17$ .
- Fig. 2 *Lepidocyclina forresti* Vaughan, B-form p. 1226  
with normal lepidinoid nepiont and small pillars, Morne Diablo Quarry, K.S. 70,  
C 36104,  $\times 17$ .

Plate 23



1



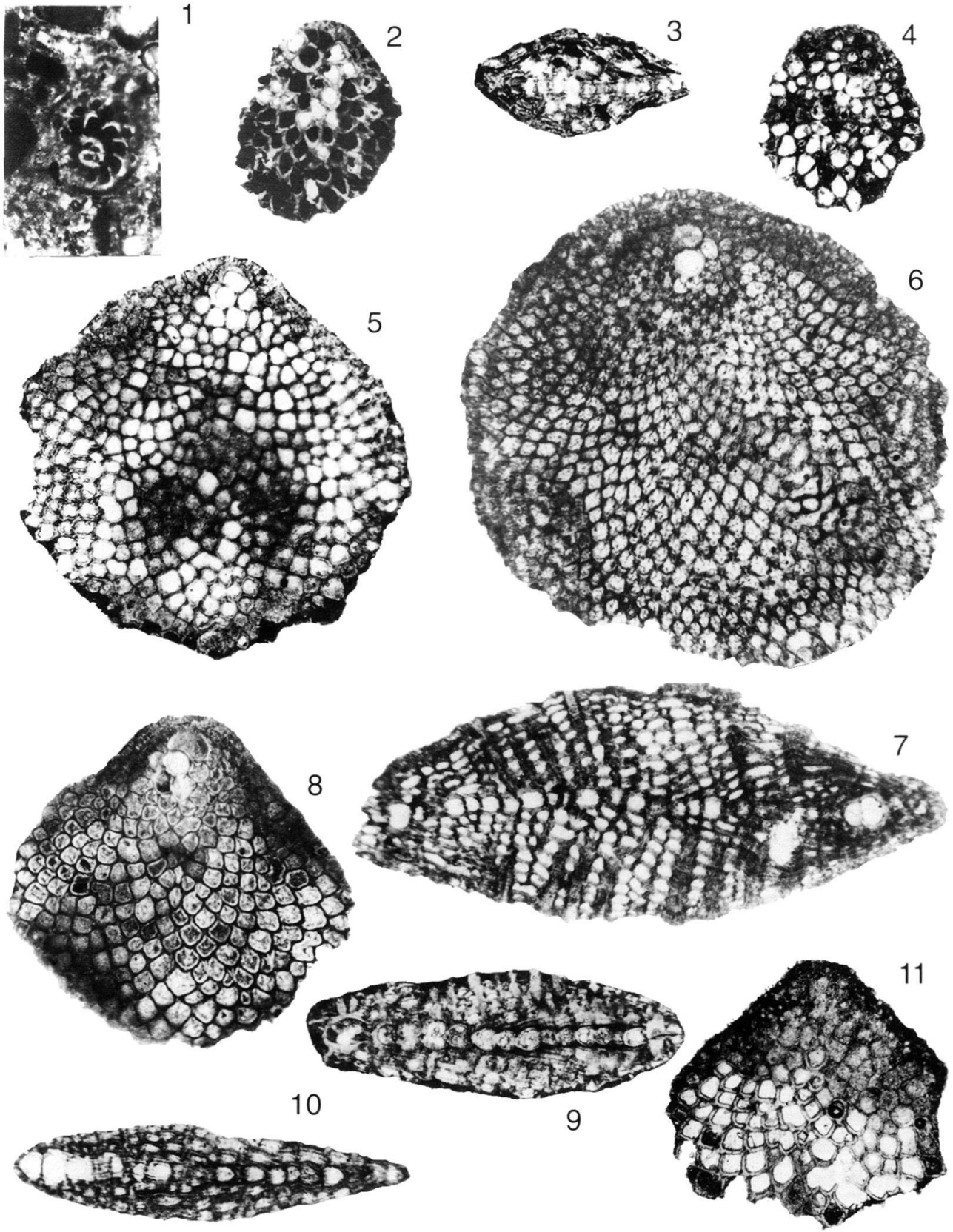
2

**Plate 24**

- Fig. 1 *Miogypsina (Miogypsinoides) complanata* Schlumberger p. 1236  
Mejias Quarry (in matrix), Terpstra 143, C 35912, × 30.
- Fig. 2–4 *Miogypsina (Miogypsina) gunteri* Cole p. 1236  
Kapur Quarry, Lz. 3473, C 35914 (Fig. 2), C 36107–36108 (Fig. 3–4), × 30.
- Fig. 5 *Miogypsina (Miogypsina) bramletti* Gravell p. 1237  
Morne Diablo Quarry, K.S. 19b, C 35911, × 30.
- Fig. 6 *Miogypsina (Miogypsina) hawkinsi* Hodson p. 1236  
Morne Diablo Quarry, coll. K. 12-1-41, C 35915, × 30.
- Fig. 7 *Miogypsina (Miogypsina) hawkinsi* ? p. 1236  
Morne Diablo Quarry, coll. K. 12-1-41, C 36113, × 30.
- Fig. 8–11 *Miogypsina (Miogypsina) bramletti* Gravell p. 1237  
Morne Diablo Quarry, K.S. 19b, C 36109–36112 (Fig. 8–11), × 30.



Plate 24



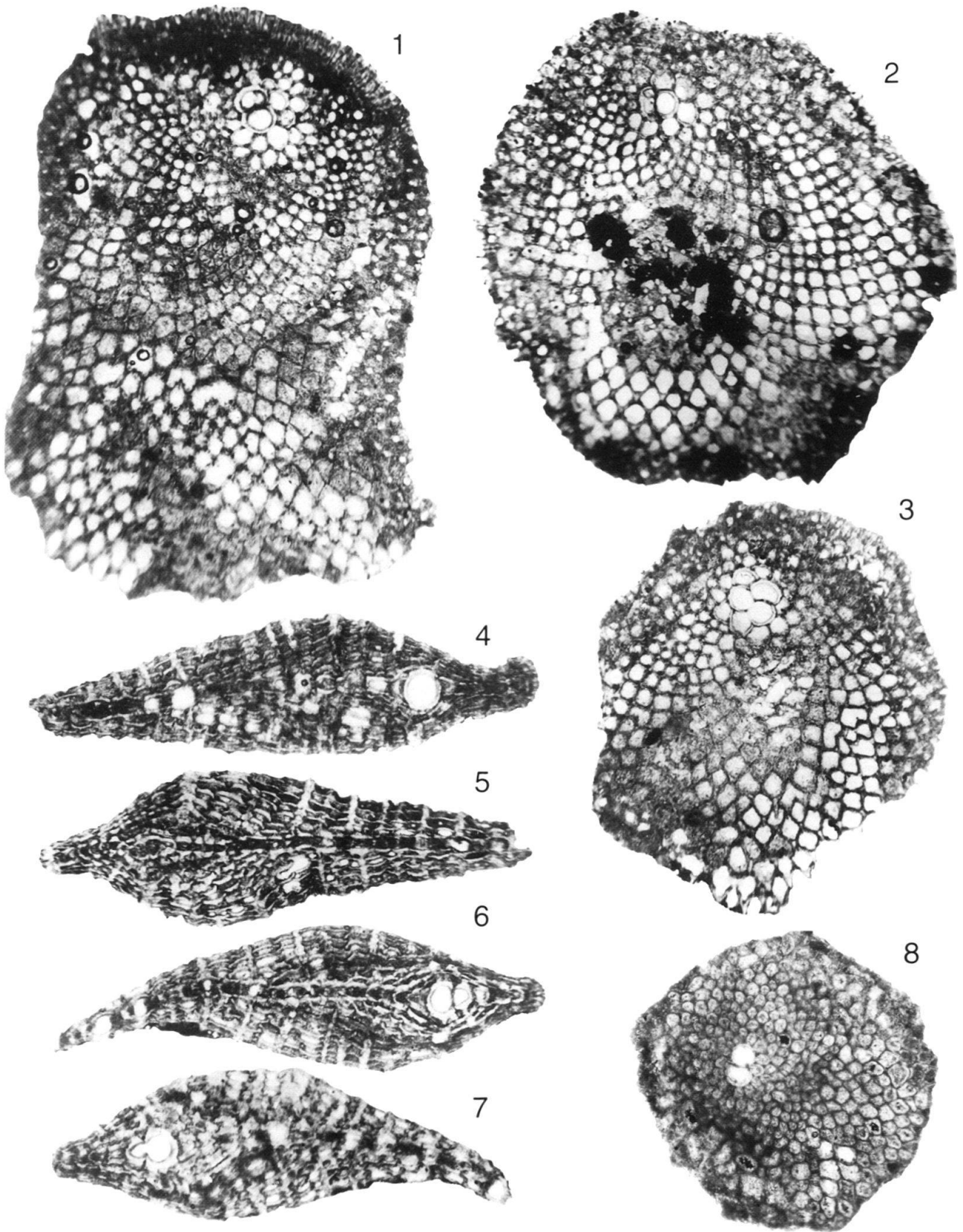
**Plate 25**

Fig. 1-8 *Miogypsina (Miolepidocyclina) staufferi* Koch

p 1237

Fig. 1, 4-5, 8: lenticular; 2-3, 6-7 conchoidal; Morne Diablo Quarry, K.S 70 (Fig. 1-7), K.S. 79 (Fig. 8), Fig. 35920 (Fig. 1), C 35919 (Fig. 2), C 36114 (Fig. 3), C 36117-36118 (Fig. 4-5), C 36115-36116 (Fig. 6-7), C 35921 (Fig. 8),  $\times 30$ .

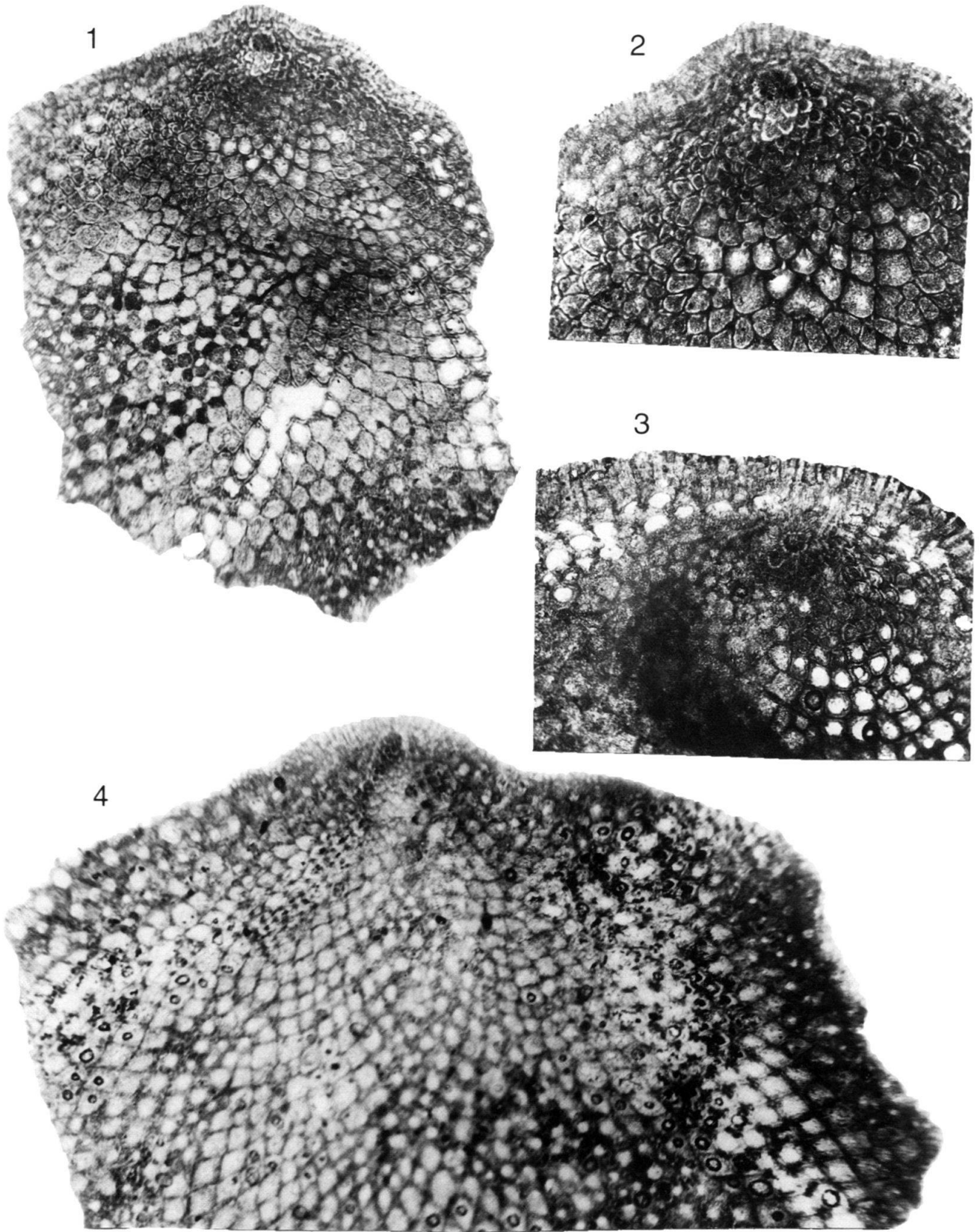
Plate 25



**Plate 26**

- Fig. 1-2 *Miogypsina* sp., B-form  
same specimen, Morne Diablo Quarry, K.S. 70, C 35923,  $\times 30$  and  $\times 50$ .
- Fig. 3 *Miogypsina* sp., B-form  
Morne Diablo Quarry, K.S. 70, C 36119,  $\times 50$ .
- Fig. 4 *Miogypsina* sp., B-form  
Morne Diablo Quarry, M. 13600B, C 35924,  $\times 50$ .

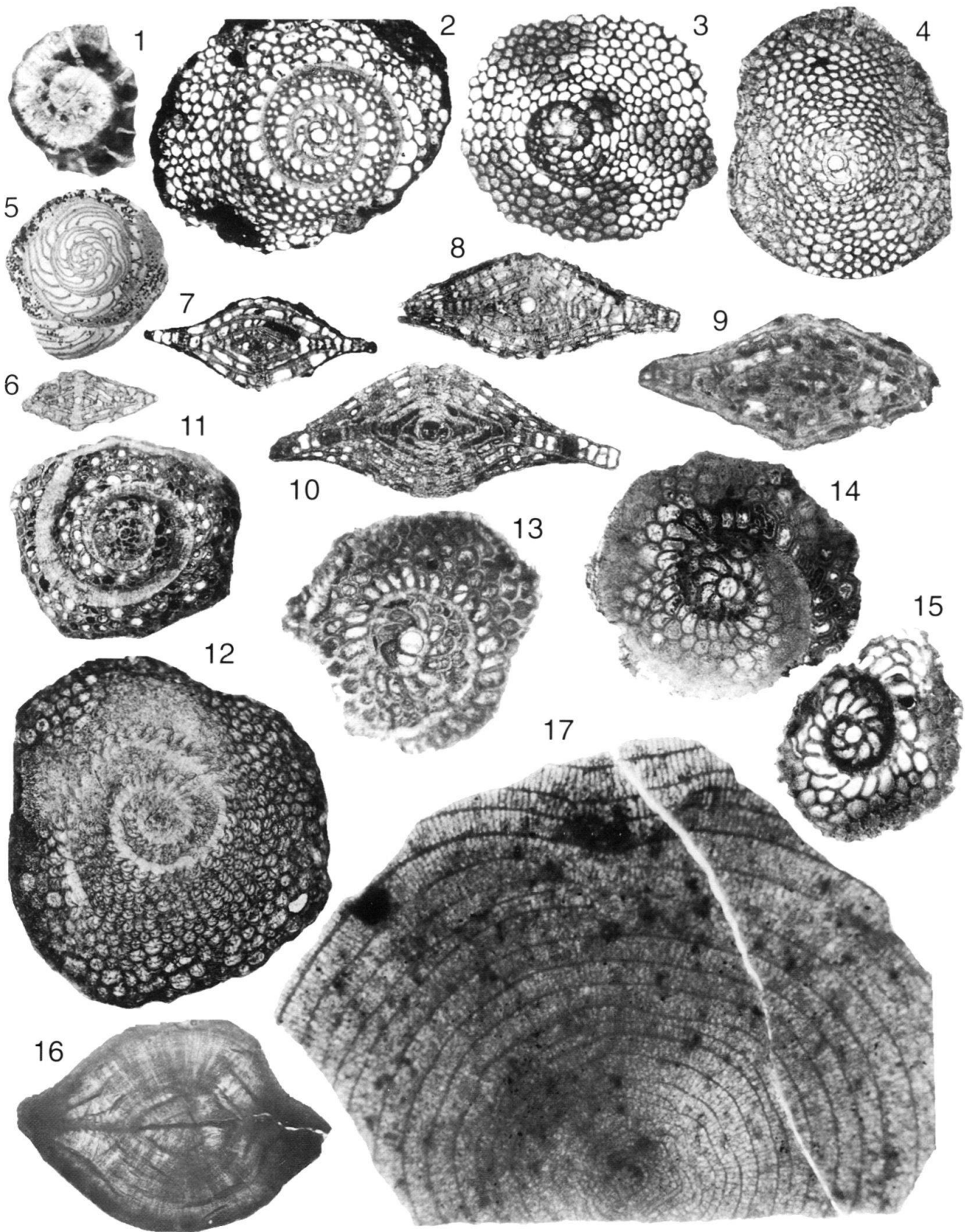
Plate 26



### Plate 27

- Fig. 1 *Eoconuloides* cf. *lopeztrigoi* (D. Palmer) p. 1229  
(reworked specimen), Point Bontour, St. 89, C 36042, × 30.
- Fig. 2 *Helicosteginopsis soldadensis* (Grimsdale) p. 1235  
Soldado Rock, K. 2854, C 31099, × 30.
- Fig. 3 *Helicocyclina paucispira* (Barker & Grimsdale) p. 1236  
Point Bontour, St. 85, C 35942, × 30.
- Fig. 4 *Helicocyclina paucispira* (Barker & Grimsdale) p. 1236  
Vistabella Calyx 57, 1000–1010 feet, × 30.
- Fig. 5 *Amphistegina grimsdalei* Caudri p. 1234  
Soldado Rock, K. 2651, specimen in Shell's collection in the Hague, × 30.
- Fig. 6 *Amphistegina grimsdalei* Caudri p. 1234  
Soldado Rock, Grimsdale 33, specimen in Shell's collection in the Hague, × 30.
- Fig. 7 *Helicosteginopsis soldadensis* (Grimsdale) p. 1235  
Soldado Rock, K. 2651, C 31100, × 30.
- Fig. 8 *Helicocyclina paucispira* (Barker & Grimsdale) p. 1236  
Vistabella, E.L. 1435, C 35943, × 30.
- Fig. 9 *Helicolepidinoides intermedius* Caudri, n. sp. p. 1231  
Farallon Rock, coll. Stainforth, Renz & Rutsch, C 36079, × 30.
- Fig. 10 *Helicocyclina paucispira* (Barker & Grimsdale) p. 1236  
Vistabella, E.L. 1207, C 35941, × 30.
- Fig. 11 *Helicosteginopsis soldadensis* (Grimsdale) p. 1235  
B-form, Vistabella Quarry, Cd. 12, C 35938, × 30.
- Fig. 12 *Helicosteginopsis soldadensis* (Grimsdale) p. 1235  
B-form, Vistabella Quarry, coll. Lehner 1933, C 35937, × 30.
- Fig. 13 *Helicolepidinoides intermedius* Caudri, n. sp. p. 1231  
Point Fortin West, UBOT well, F.W. 181, 8687–8707 feet, specimen in Shell's collection in the Hague, × 30.
- Fig. 14–15 *Helicolepidinoides intermedius* Caudri, n. sp. p. 1231  
Farallon Rock, coll. Stainforth, Renz & Rutsch, C 36121–36122 (Fig. 14–15), × 30.
- Fig. 16 *Helicosteginopsis soldadensis* (Grimsdale) p. 1235  
B-form, vertical section, Navette area, R.M. 1337, C 35939, × 24.
- Fig. 17 *Pseudophragmina bainbridgensis* (Vaughan) p. 1206  
B-form, Point Bontour, St. 46, C 36011, × 34.

Plate 27

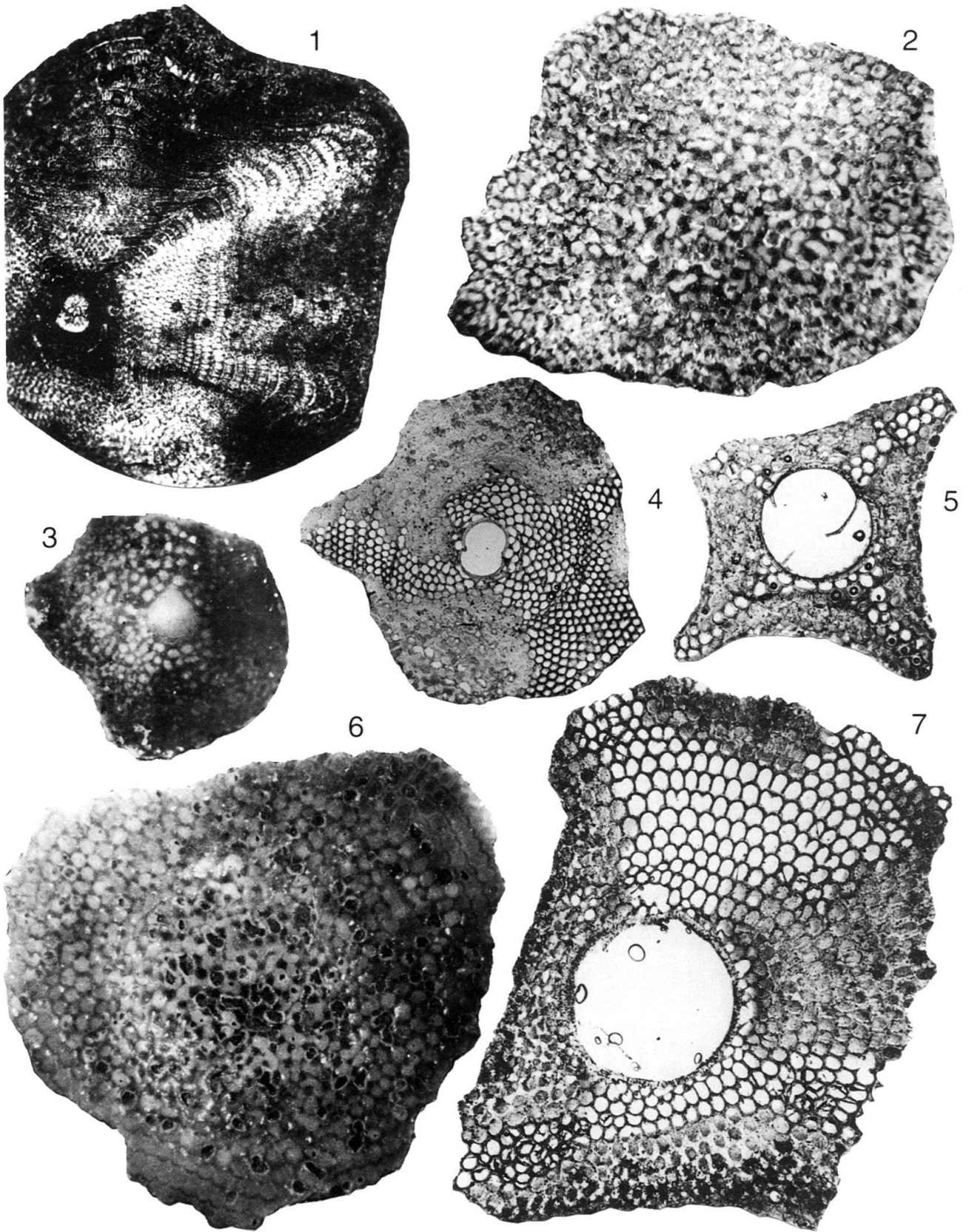


**Plate 28**

- Fig. 1 *Asterocyclina vaughani* (Cushman) p. 1208  
Vistabella, Calyx 59, 390–400 feet, C 36065, × 34.
- Fig. 2 *Lepidocyclina supera* (Conrad) p. 1225  
Cipero Coast, Grimsdale 2, C 35978, × 17.
- Fig. 3 *Helicosteginopsis soldadensis* (Grimsdale), B-form p. 1235  
Navette area, R.M. 1337, C 35936, × 30.
- Fig. 4 *Lepidocyclina supera* (Conrad) p. 1225  
Cipero Coast, Grimsdale 2, C 35979, × 17.
- Fig. 5, 7 *Lepidocyclina nuda* Caudri, n. sp. p. 1225  
Cipero Coast, Grimsdale 2, C 36123 (Fig. 5), C 36124 (Fig. 7), × 17.
- Fig. 6 *Lepidocyclina nuda* Caudri, n. sp., holotype p. 1225  
Cipero Coast, Grimsdale 2, C 36061, × 17.



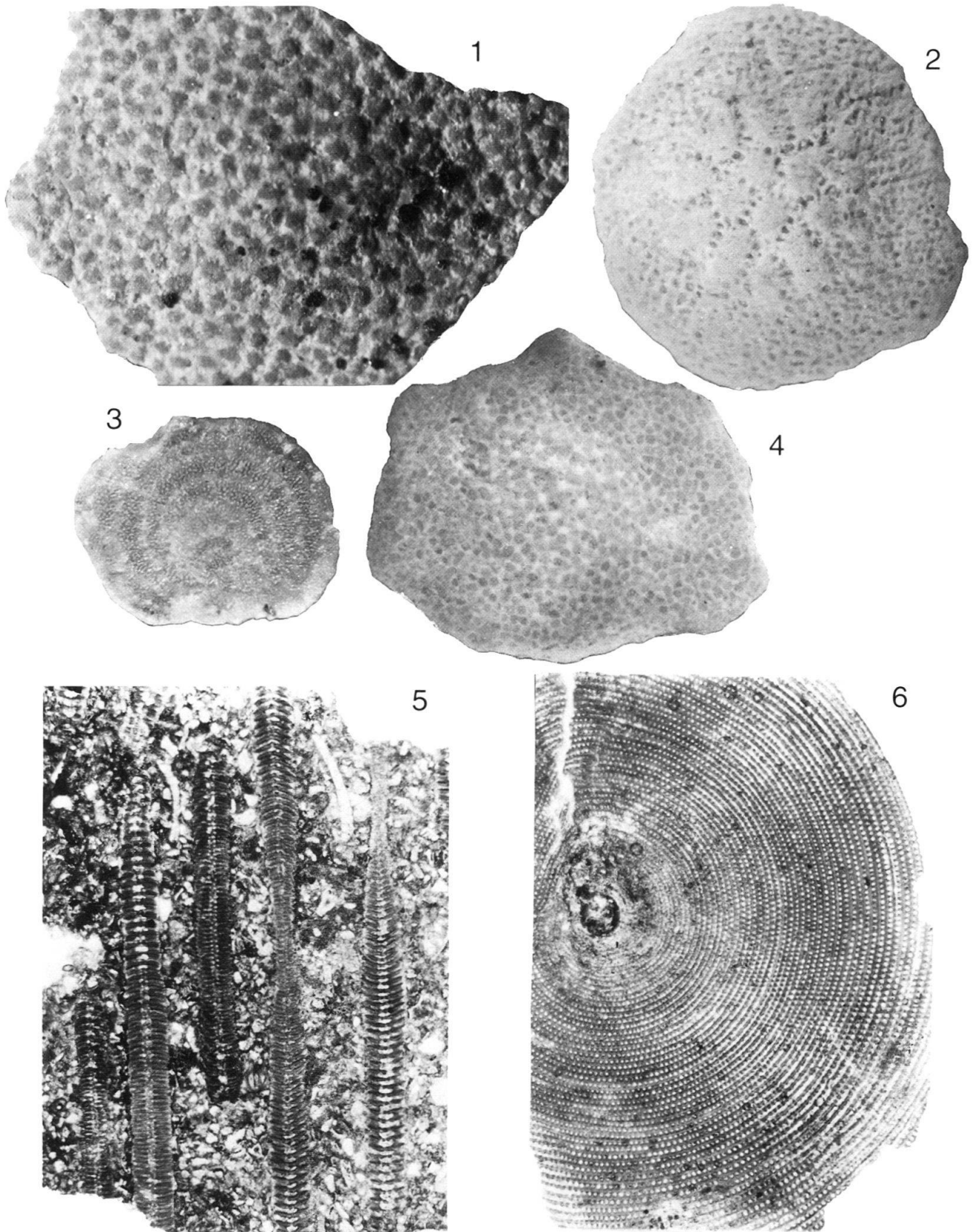
Plate 28



**Plate 29**

- Fig. 1 *Lepidocyclina forresti* Vaughan p. 1226  
pillared variety, Morne Diablo Quarry, K.S. 70, C 36053, × 17.
- Fig. 2 *Lepidocyclina parvula* Cushman, A-form p. 1227  
Morne Diablo Quarry, K.S. 70, C 35997, × 17.
- Fig. 3 *Cycloloculina jarvisi* Cushman  
Soldado Rock, K. 3692, same specimen as Pl. 8:13, C 31049, × 60.
- Fig. 4 *Lepidocyclina canellei* Lemoine & R. Douvillé p. 1227  
Morne Diablo Quarry, K. 2667, C 35992, × 17.
- Fig. 5–6 *Sorites* sp. p. 1237  
Gasparillo Quarry, C 36044 (Fig. 5), C 36125 (Fig. 6), × 17.

Plate 29



**Plate 30**

- Fig. 1 *Lepidocyclina canellei* Lemoine & R. Douvillé p. 1227  
regenerated specimen, Morne Diablo Quarry, K. 2667, C 36098, × 17.
- Fig. 2 *Helicosteginopsis soldadensis* (Grimsdale), B-form p. 1235  
Vistabella Quarry, Coll. Lehner 1933, C 36120, × 30.
- Fig. 3 *Lepidocyclina (Polylepidina) nitida* Caudri, n. sp., B-form p. 1215  
Point Bontour, St. 71, C 36067, × 30.
- Fig. 4 *Lepidocyclina yurnagunensis* (Cushman), B-form p. 1220  
Cipero Coast, Cd. 26, C 35967, × 17.
- Fig. 5 *Neodiscocyclina fonslacertensis* (Vaughan & Cole) p. 1204  
with clear undivided ring around the nucleoconch, Soldado Rock, K. 2951B, C 31154, × 34.
- Fig. 6 *Helicolepidina spiralis* Tobler p. 1233  
common form, Point Bontour, St. 63, C 35927, × 17.
- Fig. 7 *Neodiscocyclina fonslacertensis* (Vaughan & Cole) p. 1204  
flat form, Lizard Springs, Mky 102b III, U.S.N.M. Washington, × 17.
- Fig. 8 *Asterocyclina asterisca* (Guppy) p. 1207  
lenticular variety, Point Bontour, St. 63, × 17.
- Fig. 9 *Lepidocyclina sanfernandensis depressata* Caudri, n. var. p. 1223  
Cipero Coast, C.S. 11, coll. Naegeli, C 36077, × 17.

Plate 30

