

# The onset of the syn-orogenic sedimentation in Flysch Basin of the Sicilian Maghrebids : state of the art and new biostratigraphic constraints

Autor(en): **Capoa, Paola de / Guerrera, Francesco / Perrone, Vincenzo**

Objektyp: **Article**

Zeitschrift: **Eclogae Geologicae Helvetiae**

Band (Jahr): **93 (2000)**

Heft 1

PDF erstellt am: **15.08.2024**

Persistenter Link: <https://doi.org/10.5169/seals-168808>

## **Nutzungsbedingungen**

Die ETH-Bibliothek ist Anbieterin der digitalisierten Zeitschriften. Sie besitzt keine Urheberrechte an den Inhalten der Zeitschriften. Die Rechte liegen in der Regel bei den Herausgebern.

Die auf der Plattform e-periodica veröffentlichten Dokumente stehen für nicht-kommerzielle Zwecke in Lehre und Forschung sowie für die private Nutzung frei zur Verfügung. Einzelne Dateien oder Ausdrucke aus diesem Angebot können zusammen mit diesen Nutzungsbedingungen und den korrekten Herkunftsbezeichnungen weitergegeben werden.

Das Veröffentlichen von Bildern in Print- und Online-Publikationen ist nur mit vorheriger Genehmigung der Rechteinhaber erlaubt. Die systematische Speicherung von Teilen des elektronischen Angebots auf anderen Servern bedarf ebenfalls des schriftlichen Einverständnisses der Rechteinhaber.

## **Haftungsausschluss**

Alle Angaben erfolgen ohne Gewähr für Vollständigkeit oder Richtigkeit. Es wird keine Haftung übernommen für Schäden durch die Verwendung von Informationen aus diesem Online-Angebot oder durch das Fehlen von Informationen. Dies gilt auch für Inhalte Dritter, die über dieses Angebot zugänglich sind.

# The onset of the syn-orogenic sedimentation in the Flysch Basin of the Sicilian Maghrebids: state of the art and new biostratigraphic constraints

PAOLA DE CAPOA<sup>1</sup>, FRANCESCO GUERRERA<sup>2</sup>, VINCENZO PERRONE<sup>2</sup>, FRANCISCO SERRANO<sup>3</sup>  
& MARIO TRAMONTANA<sup>4</sup>

*Key words:* Early Miocene, Biostratigraphy, Tectonics, Sicilide Units, Maghrebian Chain, Sicily, Southern Italy

## ABSTRACT

The synorogenic deposits forming the uppermost part of the stratigraphic successions of the Sicilide Units have been studied in order to recognize the tectogenetic phases in the Sicilian sector of the Maghrebian Chain. The Sicilide Units deposits sedimented in the Maghrebian Flysch Basin, which represents the southernmost of the oceanic branches separating, from the Late Jurassic, the European and African plates and the microcontinents located between them.

The study, focused on the Troina-Tusa Unit, has shown that it consists of prevalently marly-clayey foreland deposits, from Cretaceous to early Miocene age. Within the uppermost part of these deposits arenaceous beds appear, which mark the transitional boundary with two heterotopically lying turbiditic formations. The first one (Tusa Tuffite Fm.) is characterized by volcanoarenitic layers, whereas the second one (Troina Sandstone Fm.) consists of arkosic and lithic arkosic beds, interbedded with conglomerates and pelites. These two formations testify the onset of the foredeep stage in the Sicilide Basin evolution, occurring through the replacement of the marly-clayey sediments by syn-orogenic turbiditic deposits. Contemporaneously, an active andesitic magmatic arc supplies abundant epiclastic detritus to the internal areas of the basin.

In the uppermost levels of the marly-clayey sediments microfloras indicate an age not older than Aquitanian. Cocoliths and foraminifera in the overlying Tusa Tuffite and Troina Sandstone Fms. indicate an age not older than Burdigalian for the synorogenic turbiditic sediments. Therefore, these deposits are more recent than indicated up to now (upper Oligocene-middle Aquitanian). Consequently, the deformation of the Sicilide Basin, the consumption of the Maghrebian oceanic area and the following Africa-Europe continental collision must have occurred in late Burdigalian or during the Langhian.

Biostratigraphic and field data show that there is no evidence, in the Sicilian sector of the Maghrebian Flysch Basin, of the meso-Alpine, Eocene-early Oligocene, tectogenetic phases, which have been recently re-proposed by some authors. They rather agree with the Aquitanian deformation of the more internal Peloritani Domain. Moreover, they question the deformation age of the Maghrebian External Domain contiguous to the Flysch Basin (Panormide and Imerese Zones). These latter must have been deformed not earlier than Langhian, or, more probably, during the Serravallian, later than what was thought up to now.

Finally, the new data indicate a synchronous deformation in the whole Maghrebian Flysch Basin from the Calabria-Peloritani Arc to the Rif and Betic Cordilleras.

## RESUME

Les dépôts synorogéniques qui caractérisent le sommet des successions stratigraphiques des Unités Sicilides ont été étudiés afin de définir l'âge des premières phases tectogénétiques qui ont affecté le secteur sicilien de la Chaîne maghrébine. Les sédiments des Unités Sicilides ont été déposés dans le bassin des Flyschs maghrébins qui a représenté, à partir du Jurassique Supérieur, la plus méridionale des branches océaniques qui séparaient les plaques européenne et africaine et les microcontinents entre les deux.

L'étude est focalisée sur l'Unité de Troina-Tusa, caractérisée par une succession méso-cénozoïque dont les niveaux supérieurs ont été jusqu'à présent considérés comme étant compris entre l'Oligocène inférieur et l'Aquitainien. Cette unité est formée surtout de dépôts marno-argileux d'un âge compris entre le Crétacé et le Miocène inférieur. Au sommet, apparaissent des grès, qui marquent le passage graduel à deux formations turbiditiques hétérotopiques: la Formation des «*Tuffiti di Tusa*», caractérisée par des couches volcano-gréseuses, et la Formation des «*Arenarie di Troina*», composée par des arkoses et des arkoses lithiques, dans lesquelles sont intercalés des conglomérats et des pelites. Ces deux formations témoignent du début du stade d'avant-fosse dans le bassin sicilide, marqué par le remplacement de la sédimentation marno-argileuse par des dépôts turbiditiques synorogéniques. En même temps, un arc magmatique andésitique alimentait les zones internes du bassin avec un abondant détritit épicalastique.

Les niveaux les plus élevés des sédiments marno-argileux sont caractérisés par des microflores qui témoignent d'un âge qui ne peut pas être plus ancien que l'Aquitainien, tandis que les coccolithes et les foraminifères des «*Tuffiti di Tusa*» et des «*Arenarie di Troina*» indiquent un âge pas plus ancien que le Burdigalien. Par conséquent, les dépôts synorogéniques de l'Unité de Troina-Tusa sont beaucoup plus récents que ce qu'on avait cru jusqu'à présent (Oligocène supérieur-Aquitainien moyen) et la déformation du bassin sicilide, la fermeture de l'Océan maghrébin et la collision continentale Europe-Afrique ont eu lieu à partir du Burdigalien supérieur ou pendant le Langhien.

Les données biostratigraphiques et de terrain démontrent que, dans le secteur sicilien du bassin des Flyschs maghrébins, il n'y a aucune évidence des phases tectogénétiques mésoalpines, d'âge Eocène-Oligocène inférieur, dont on a, encore récemment, supposé à nouveau l'existence. Ces données s'accordent bien également avec l'âge aquitainien de la déformation du plus interne domaine peloritain, et elles remettent en question l'âge de déformation des domaines externes maghrébins contigus au bassin des Flyschs (zones panormide et imérèse). La déformation de ces dernières ne peut pas être plus ancienne que le Langhien ou, plus probablement, elle s'est manifestée pendant le Serravallien, c'est-à-dire beaucoup plus récemment que ce que l'on avait admis jusqu'à présent.

Enfin, les nouvelles données indiquent que la déformation de tout le bassin des Flyschs est synchrone à partir de l'Arc Calabro-peloritain jusqu'au Rif et à la Cordillère Bétique.

<sup>1</sup> Dipartimento di Scienze della Terra, Università di Napoli „Federico II“, Largo San Marcellino 10, 80138 Napoli, Italy, e-mail: decapoa@unina.it

<sup>2</sup> Istituto di Geologia, Università di Urbino, Campus Scientifico, 61029 Urbino, Italy, e-mail: f.guerrera@uniurb.it and perrone@uniurb.it

<sup>3</sup> Departamento de Geología, Universidad de Malaga, Campus De Teatinos, 29071 Malaga, Spain, e-mail: f.serrano@uma.es

<sup>4</sup> Istituto di Geodinamica e Sedimentologia, Università di Urbino, Campus Scientifico, 61029 Urbino, Italy, e-mail: tramontana@uniurb.it

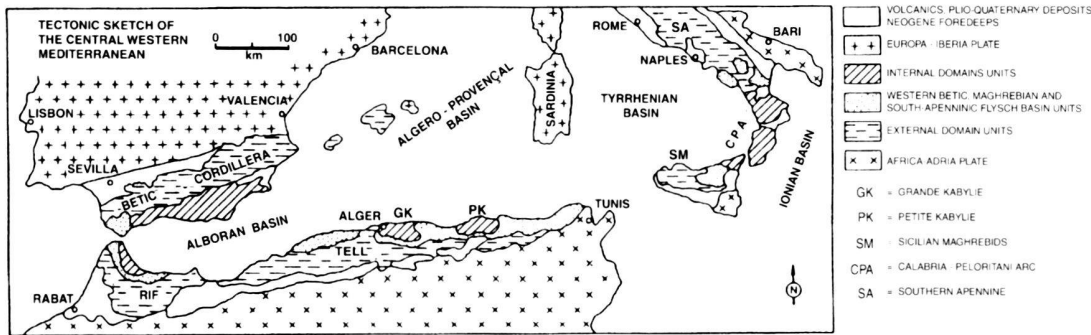


Fig. 1. Tectonic sketch of the Alpine Chains of the Central-Western Mediterranean (after Guerrera et al. 1993).

## 1. Introduction

The Maghrebain Chain, as defined by Aubouin & Durand Delga (1971), Durand Delga (1980) and Wildi (1983), is an Africa-vergent Alpine chain, extending from the Gibraltar Strait to the Catanzaro Graben in Central Calabria. The chain is made of a nappe pile resulting from the deformation of three main domains: the Internal, the Flysch Basin and the External Domains (Fig. 1).

From these domains, located from north to south respectively, nappes now stacked from the top to the bottom in the tectonic pile, originated. The Internal Domain nappes, preserved in the Rif, the Kabylies and the Calabria-Peloritani Arc, are characterized by pre-Alpine crystalline basement and only some of them show a Meso-Cenozoic cover (Fig. 1).

The Flysch Basin nappes are made up of pelagic and turbiditic successions, ranging in age from the Latest Jurassic to the early Miocene. They accumulated in a Meso-Cenozoic basin, extending from Gibraltar to Eastern Sicily, characterized by an oceanic crust (Wildi 1983; Guerrera et al. 1993), which is preserved in a few outcrops across the Kabylies (Durand Delga 1971) and the Rif (Olivier et al. 1996). This basin was the site of a prevailing turbiditic sedimentation: differences both in lithology and sedimentary evolution allowed to individuate internal (Mauretian) and external (Massylian) successions, markedly continuous along the basin axis (Bouillin et al. 1970).

The differences between Mauretian and Massylian successions are particularly remarkable from the late Oligocene onwards, when in the Mauretian Zone of the basin the sedimentation of immature sandstones occurs, while the very mature quartzarenitic Numidian Flysch Sequence, supplied by the African Craton, is deposited in the Massylian Zone. The two types of successions pass one into the other through typical alternances of lithic arkoses and quartzarenites (Mixed Successions; Didon & Hoyez 1978; Guerrera et al. 1986). Terrains of the Flysch Basin have been recognized in the Betic Cordillera (Flysch of the Campo de Gibraltar; Didon 1969; Martín-Algarra 1987) and recently in the Apenninic Chain (Bonardi et al. 1988, 1994; Guerrera et al. 1993; Fig. 1).

The External Domain nappes, finally, are mainly characterized by calcareous and marly successions, related to both neritic and pelagic environments.

Although the geometric setting and the major paleogeographic interpretations are unanimously accepted, many problems are still debated. Among these the following are the most controversial: 1) the origin of the Internal Domain nappes, for which a provenance from Africa (Amodio Morelli et al. 1976), Europe (Bouillin et al. 1986) or an intermediate microcontinent (Wildi 1983; Guerrera et al. 1993) has been suggested; and 2) the age of the onset of the deformation in the different domains, because ages ranging from the middle Eocene to the middle Miocene have been proposed (Duée 1969; Courme & Mascle 1988; Roure et al. 1990; Lentini et al. 1991, 1995; Casola et al. 1992; Guerrera et al. 1993; La Manna et al. 1995).

This paper deals with some results of a research carried out on the Sicilian sector of the Maghrebain Chain and turns to the reconstruction of the tectogenetic history of this sector during the Paleogene-middle Miocene, that is to say between the onset of the compressive deformation in the Western Mediterranean domains and the Africa-Europe collision. The research has involved a revision of the siliciclastic syn-orogenic formations, which characterize the units deriving from the Internal and Flysch Basin Domains, and of the late-orogenic formations, post-dating the stacking of the nappes resulting from the first deformative phase.

## 2. The eastern sector of the Maghrebain Chain

In the eastern sector of the Maghrebain Chain (Sicily and Southern Calabria; Aubouin & Durand Delga 1971) all the main domains are easily recognizable (Fig. 2).

The Internal Domain is represented by the nappes of the Peloritani Mountains and Southern Calabria, which are characterized by a metamorphic pre-Alpine basement. Only the lowest nappe (Longi-Taormina Nappe) shows a continuous Upper Triassic-Aquitainian sedimentary cover.

The age of deformation of the Internal Domain is well constrained by the Aquitainian age of the youngest sediments stacked in the nappe pile (de Capoa et al. 1997) and the Burdigalian age (Bonardi et al. 1980) of the oldest clastic deposits unconformably lying on all the Peloritani Units (Stilo-Capo d'Orlando Formation).

The Flysch Domain units are arranged in three nappes: Monte Soro, Troina-Tusa and Nicosia, emplaced respectively

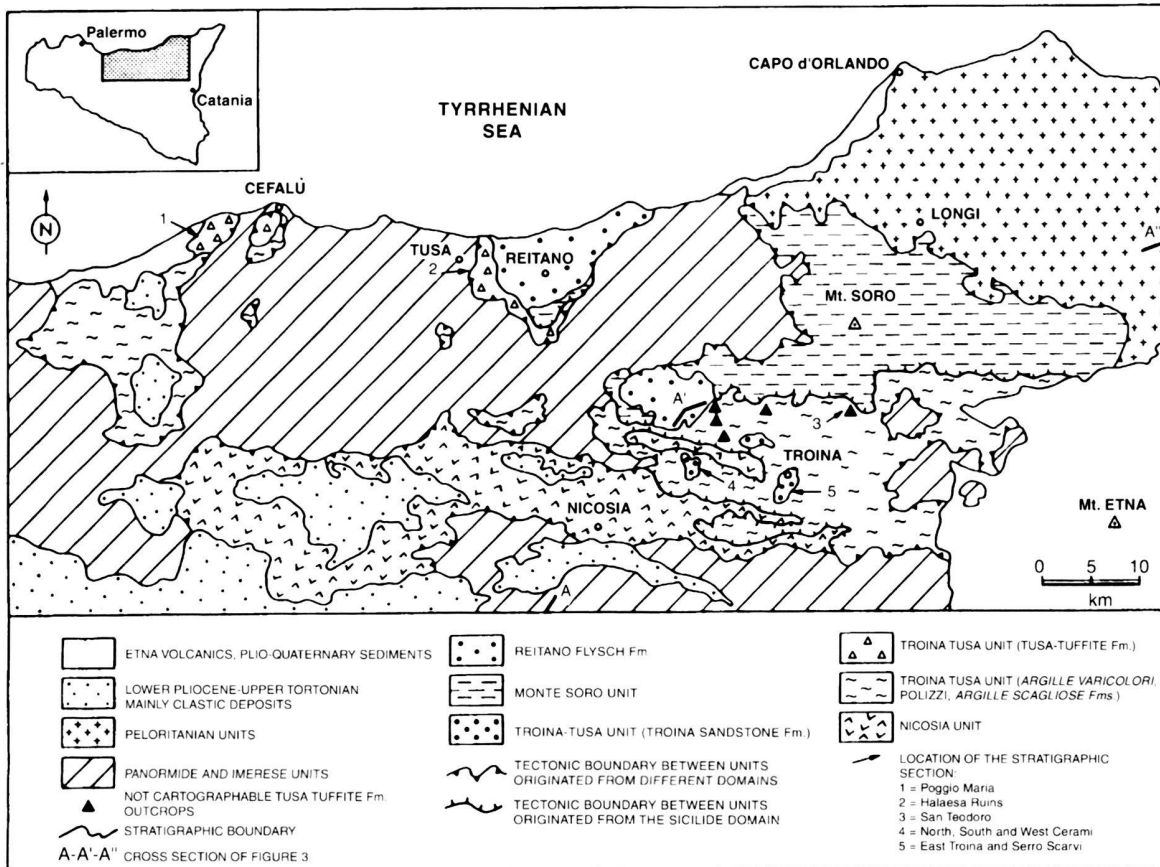


Fig. 2. Geologic sketch map of north-eastern Sicily.

from the top to the bottom of the stack. For the Sicilian sector of the Flysch Basin we propose to use the term Sicilide Basin (Ogniben 1960), in agreement with the Italian literature. Sicilide units have also been recognized in a more internal position, onto the Stilo-Capo d'Orlando Fm. or directly lying on the metamorphic basement of the Peloritanean units (Fig. 3). This supra-Peloritane arrangement has been interpreted as the result of a back-thrusting (Antisicilide Complex; Ogniben 1960), related with the closure of the Sicilide Flysch Basin and the consequent Africa-Europe collision (Bonardi et al. 1996).

The External Domain Units are recognizable in several thin-skinned thrust sheets, made up of deposits ranging in age from the Middle Triassic to the middle-late Miocene. They show prevailing Mesozoic carbonate platform or carbonate ramp successions and subordinate deep pelagic sediments.

In the early Miocene a wide deep basin extends from a part of the External Domain (Imerese and Panormide Zones) to the Mauretanic Zone. Within this basin, the pelitic and quartzarenitic sedimentation of the Numidian Flysch Sequence develops in the former Imerese, Panormide and Massilian Zones. Northward, the Numidian Sequence passes to the immature sediments of the Mauretanic Zone. Therefore, the uppermost levels of the Imerese, Panormide and Massilian

Units are characterized by the same sediments of the Numidian Flysch Sequence.

### 3. The Maghrebien Flysch Basin in Sicily: previous papers and state of the art

Ogniben (1960) distinguishes a Sicilide Complex characterized by an upper nappe (Cesarò Nappe), constituted by Cretaceous sandy-pelitic sediments, and a lower nappe (Troina Nappe), made up of Cretaceous-Miocene deposits. The Eocene of the Troina Nappe includes some heteropic formations, capped by the mainly arenaceous Reitano Flysch, Oligocene-middle Miocene in age. According to Ogniben (1960) the Cesarò and Troina Nappes would derive from the same stratigraphic succession, whose upper part would have been overthrust by the lower one, detached in correspondence with Eocene variegated clay levels.

These ideas resulted in the geologic map of Vezzani et al. (1972). The stratigraphic succession of the Sicilide Complex, from which the Cesarò and Troina Nappes originated, starts with a Tithonian?-Lower Cretaceous formation made up of clays and limestones, and ends with three heteropic Eocene formations. The first two are constituted by clays, marls and,

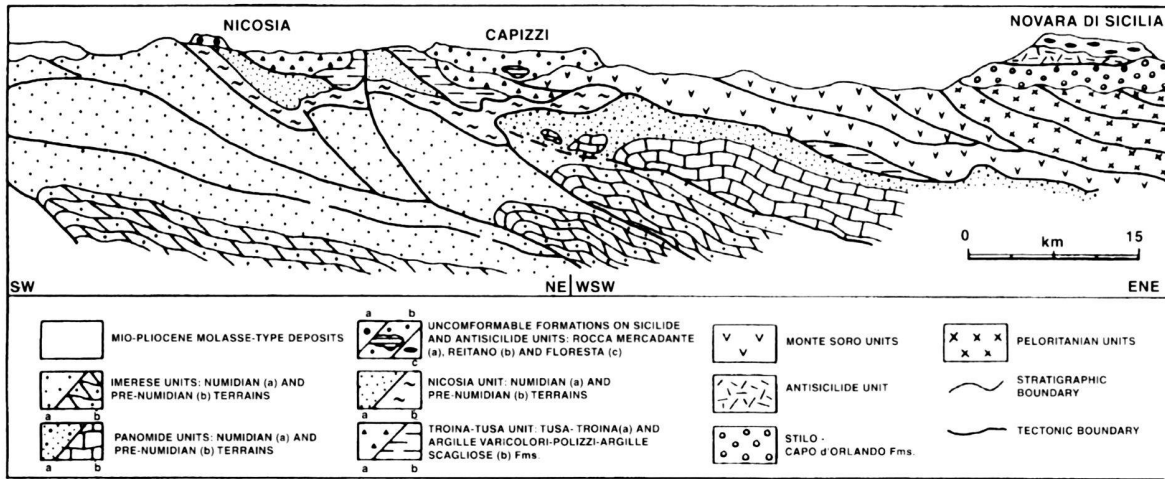


Fig. 3. Schematic cross section of north-eastern Sicily (after Bianchi et al. 1987; slightly modified), along the alignment Novara di Sicilia-Capizzi-Nicosia (A-A' in Fig. 2).

subordinately, limestones and sandstones; whereas the third is made up of tuffites, tuffitic sandstones and clays (*Tuffiti di Tusa* Fm.). The arenaceous turbidites of the Reitano Flysch, latest Oligocene-early Miocene in age, unconformably lie on both Cesarò and Troina Nappes, post-dating their tectonic contacts.

However, according to Duée (1969) and Caire (1970) three main nappes (*Argille Scagliose*, Reitano and Monte Soro) originated from the Sicilide Basin. Starting from the Late Jurassic, the sediments of the Sicilide Basin would have been deposited all around the partially emerging crystalline Peloritian Domain. In the Oligo-Miocene, the deformation of this domain would have directly influenced the sedimentation, causing an immature sandy-conglomeratic supply in the Reitano Nappe basin, located immediately north and west of the crystalline area. Contemporaneously the clayey and quartzarenitic sedimentation continued in the *Argille Scagliose* and Monte Soro Nappe basins, located north of the Reitano Basin and south of the crystalline domain, respectively. This paleogeographic reconstruction would explain the present arrangement of the Sicilide Nappes, which lie above and below the Peloritian units (Fig. 3). Some unconformities, Cretaceous, Eocene and late Oligocene in age, would testify important tectonic events, but the present setting would be the result of Tortonian tectogenetic phases.

Later, Wezel & Guerrera (1973) and Guerrera & Wezel (1974) reached very different conclusions. The *Tuffiti di Tusa* Fm., late Oligocene-middle Aquitanian in age, overlies in stratigraphic continuity varicoloured clays, it constitutes the highest part of the Troina-Tusa tectonic unit and is heteropic of the marly-litho-arkosic flysch successions, cropping out at Troina and Cerami. The Troina-Tusa Unit is unconformably topped by the neo-autochthonous Reitano-Capo d'Orlando Flysch, early Miocene in age. Moreover, the authors were the first to interpret the Tusa tuffites according to a plate tectonics model: this turbiditic formation was supplied from the erosion of a calc-alkaline volcanic arc, and may be correlated with

other volcanoclastic deposits of the Central-Western Mediterranean region.

These interpretations are shared by Amodio Morelli et al. (1976), except for the correlation between the Capo d'Orlando and Reitano Fms., which, on the contrary, are considered to follow two different tectogenetic phases: the first is responsible for the deformation of the Peloritian Domain, the second of the Sicilide one. Therefore, also the ages should be different: more ancient (Oligocene) for the Capo d'Orlando Fm., younger (early or middle Miocene) for the Reitano Flysch Fm.

Because of the occurrence of coeval levels in both the Troina and Cesarò Nappes, Lentini & Vezzani (1978) and Lentini (1982) question that there was only one stratigraphic succession, split up by the tectonics. According to these authors, two nappes originated from the Sicilide Basin: the internal Monte Soro Nappe and the external Troina-Tusa Nappe. In the late Oligocene-early Miocene a tectogenetic phase, post-dated by the Reitano-Capo d'Orlando Flysch, caused the overriding of the Peloritian Units on the Monte Soro Unit and, later, the emplacement of the nappe pile on the Troina-Tusa deposits. In the still undeformed most external areas of the Sicilide Basin – around Cerami and Troina – the clastic sedimentation of the Reitano Flysch continued on the Oligocene sediments. Therefore, an internal Reitano Flysch, unconformably lying on deformed Sicilide Units, and an external Reitano Flysch, following still undeformed Sicilide terrains, are for the first time distinguished.

Puglisi (1979, 1987) points out marked differences in the petrography of the sandstones of the Internal and External Reitano Flysch. This latter is significantly rich of andesitic volcanic clasts, which represent an evident link with the Tusa Tuffite Fm.

Giunta et al. (1982) and Giunta (1985) describe a Nicosia Unit within the Sicilide Domain. This nappe is geometrically the lowest one, lying below the Troina-Tusa Nappe; its external paleogeographic origin is confirmed by the upper

Oligocene-lower Miocene Numidian Flysch, never recognized in the Troina-Tusa and Monte Soro Units.

Bianchi et al. (1987) describe the units, both exposed and buried, recognizable along a crustal profile Nebrodi-Iblei. In the northernmost part, the Sicilide units crop out beneath the Peloritanean units. From the top to the bottom they are: 1) the Monte Soro Unit, made up of only Thitonian-Cretaceous deposits; 2) the Sicilide s.s. Unit, which shows Cretaceous-Eocene pelitic and carbonate sediments and ends with a marly-arenaceous, somewhere tuffitic, turbiditic formation, early Miocene in age; 3) the Nicosia Unit, whose highest levels (Numidian Flysch) are early Burdigalian in age. The first two units are sutured by the unconformably lying Reitano Flysch, probably middle Miocene in age.

Later on, some papers re-propose a pre-late Oligocene age for the Reitano Flysch and for the tectogenetic phases responsible for the deformation of the Sicilide Basin. Courme & Mascle (1988) consider the External Reitano Flysch late Eocene-middle Oligocene in age, whereas Roure et al. (1990) recognize a major unconformity at the base of the Reitano Flysch, which is considered Oligocene in age, and propose again the pre-Oligocene deformation, already pointed out by Ogniben (1960).

Similarly, Cassola et al. (1992, 1995) and Puglisi (1992), on the base of further biostratigraphic data, propose an early Oligocene age for all the terrains previously ascribed to the Reitano Flysch. The authors distinguish an Internal Reitano Flysch, unconformably lying on the only Monte Soro Unit, and an External Reitano Flysch. This latter constitutes the uppermost levels of the Troina-Tusa succession and would be deposited in small pull-apart basins, located in the still undeformed area. Moreover, the early Oligocene age of the Internal Reitano Flysch would demonstrate the occurrence in the Sicilian sector of the Maghrebian Chain of a meso-Alpine tectogenetic phase. This is responsible for the deformation of both the Peloritanean Domain and the sector of the Sicilide Basin in which the Monte Soro succession deposited.

Interesting data are shown in the map of Carbone et al. (1990) and in Lentini et al. (1991, 1995). The Sicilide Units represent an accretionary wedge originated during the Paleogene. Particularly, in the Troina-Tusa and Nicosia Units, stratigraphic successions, starting from the Cretaceous and ending respectively in the early Miocene and in the early Burdigalian, are recognized. All the deposits previously ascribed both to the Internal and External Reitano Flysch, would lie unconformably on the Monte Soro and Troina-Tusa successions: moreover, they would be Burdigalian-Serravallian in age and would post-date the deformation of the Sicilide Basin, which, therefore, started in the late Oligocene and ceased during the early Burdigalian. Besides, according to Lentini et al. (1995), two other Sicilide units would be recognizable. The first one (*Argille Scagliose Superiori* Unit) would be a broken formation made up of exclusively Cretaceous varicoloured clays, marls and sandstones, tectonically sandwiched between the Peloritanean and the Monte Soro Units. The second one (Monte Salici Unit, for-

merly considered as an Imerese Unit; Bianchi et al. 1987) crops out below the Nicosia Unit and its upper levels would be made up of only lower-middle Miocene quartzarenites.

Finally, La Manna et al. (1995) propose a sketch of the tectono-sedimentary evolution of the Sicilide Basin. The deformation would take place between the late Oligocene (*i.e.* the age of the Tusa tuffites) and the Aquitanian (*i.e.* the age of the uppermost levels of the Nicosia Unit stratigraphic succession). The stacking of the Sicilide units was immediately followed by the deposition of the Reitano Flysch Fm., whose age ranges between the Burdigalian and a no better definable middle Miocene.

#### 4. The Sicilide Basin units

As already pointed out, the units resulting from the deformation of the terrains deposited in the Sicilide Basin are, from the top to the bottom, the Monte Soro (Duée 1969), the Troina-Tusa (Wezel & Guerrera 1973) and Nicosia (Giunta et al. 1982) Units.

The stratigraphic succession of the Monte Soro Unit starts with clays, marls and fine-grained turbiditic limestones (clayey-calcareous member), followed by quartzarenites with a few beds of varicoloured clays (quartzarenitic member). In this succession only Cretaceous foraminifera and coccoliths have been found (Vezzani et al. 1972). Recently, Bouillin et al. (1995) recognized Upper Jurassic radiolarites (Contrada Lanzari Formation), interpreted as the bottom of the succession. Only Giunta et al. (1982) believe that the Cretaceous succession of the Monte Soro Unit continues with Paleogene and perhaps lower Miocene terrains, but no biostratigraphic data supporting these ages have ever been presented (Tab. 1).

The base of the succession of the Troina-Tusa Unit is made up of varicoloured clays. They somewhere are strongly deformed and contain blocks of jaspers, marls and whitish calcilutites, Cretaceous-Eocene in age (*Argille Scagliose* Formation; Lentini et al. 1991). It is followed by an alternance of calcareous and marly-calcareous turbidites, with abundant macroforaminifera of Eocene age (Polizzi Formation; Lentini et al. 1991). The stratigraphic succession continues with another varicoloured clayey formation of Oligocene age, characterized in the upper part by marly and marly-calcareous beds, some tens of metres thick (*Argille Varicolori* Formation; Lentini et al. 1991). This latter, near Cefalù, is capped by tuffitic sandstones, whereas in the region of Tusa, San Teodoro and Capizzi, it passes to a pelitic-tuffitic succession (Tusa Tuffite Fm.). Finally, between Cerami and Troina, the *Argille Varicolori* Fm. is followed by a sandy-pelitic turbiditic succession, with abundant volcanoclastic detritus at the bottom (Puglisi 1979). For these latter terrains we propose the denomination of Troina Sandstone Formation (Tab. 1).

The Nicosia Unit shows in the lower-middle part a stratigraphic succession similar to that constituting the Troina-Tusa Unit, characterized by the *Argille Scagliose*, Polizzi and *Argille Varicolori* Fms. In the uppermost part of the last formation



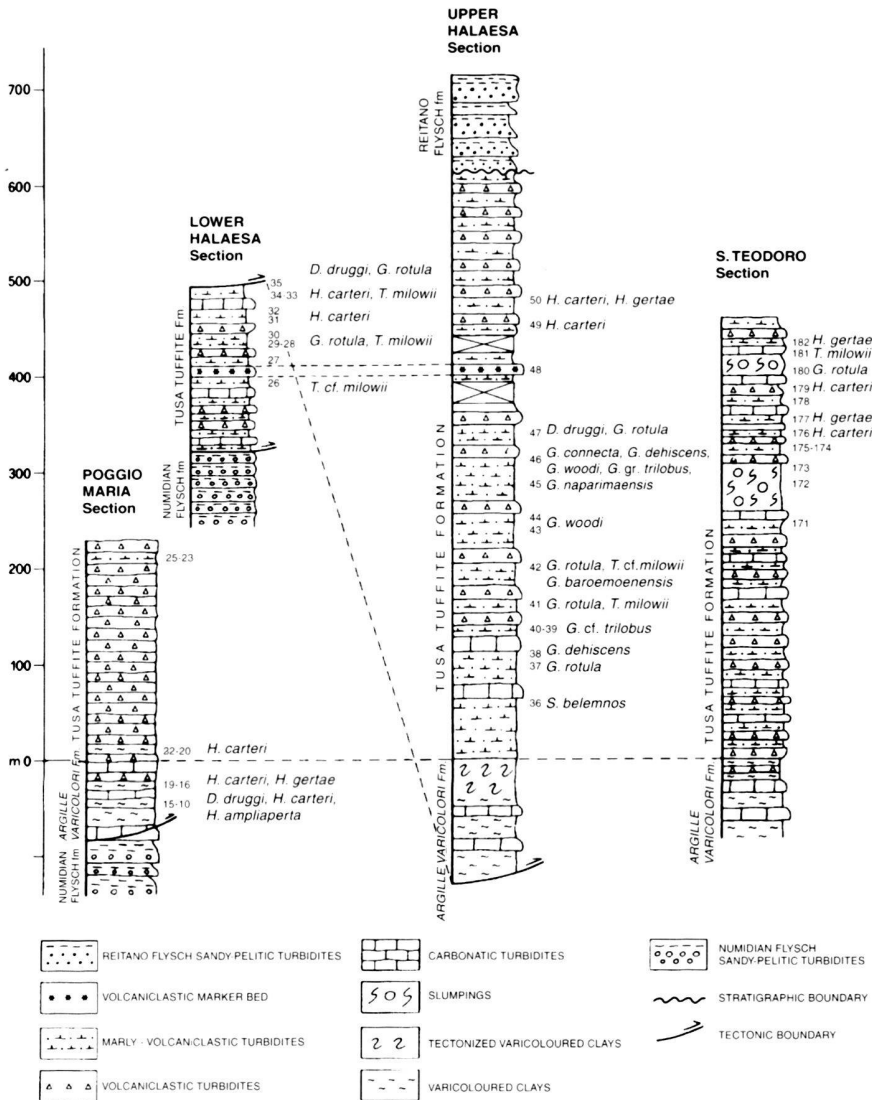


Fig. 4. Stratigraphic columns of the studied sections of the Tusa Tuffite Fm. The location of the samples and the occurrence of taxa starting from early Miocene are indicated.

only arenaceous beds. Here, it is made up of clearly re-sedimented volcaniclastic and marly-calcareous beds, and few and thin hemipelagic levels, formed by greenish pelites (Fig. 4). The volcaniclastic strata are mainly constituted by thin silty-marly turbidites, more or less rich in volcanic detritus, interbedded with coarse-grained arenaceous levels. These latter constitute about twenty layers of graded blue-greenish andesitic sandstones, gradually passing to arenaceous marls. The thickness of these sandstone beds, ranging between 20 cm and 14 m, is frequently 2–3 m. The petrographic composition is mainly characterized by volcanic clasts (40–90%; andesite fragments, glasses, crystals of plagioclase, magnetite, biotite, olivine, hyperstene, etc.) and to a lesser extent by plutonic and metamorphic detritus (10–40%; quartz, feldspars, muscovite, gneissic, granitic and phyllitic fragments). As regards the calcareous turbidites, some of them are coarse-grained and char-

acterized by neritic bioclasts (macroforaminifera and algae), whereas others are fine-grained.

The fourth stratigraphic section has been sampled 2 km north of San Teodoro, along the road which from the village reaches the 289 State Road at Portella Buffali. Here, the Tusa Tuffite Fm. crops out with a thickness close to 450 m. Also in this section some volcaniclastic beds appear interbedded within the uppermost portion of the *Argille Varicolori* Fm. and abruptly increase upwards, becoming the markedly prevailing lithotypes. The stratigraphic succession, wholly turbiditic, is very similar to that of the Fiumara of Tusa area: silty-marly beds, rich in volcanic detritus, and blue-greenish tuffitic strata are interbedded with minor whitish limestones, some of them made up of re-sedimented neritic fragments. In the middle-upper portion of the succession two slumps occur (Fig. 4).



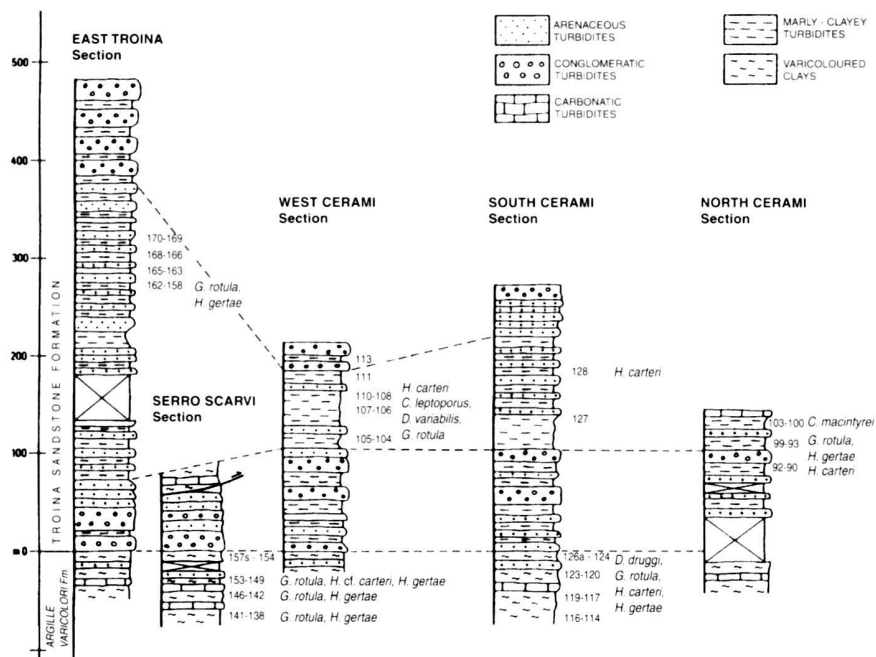


Fig. 5. Stratigraphic columns of the studied sections of the Troina Sandstone Fm. The location of the samples and the occurrence of taxa starting from early Miocene are indicated.

Other outcrops of the Tusa Tuffite Fm. are located in an almost continuous belt from Castel di Tusa to Mistretta and in the region north-west of Troina (Fig. 2). In all these outcrops the small extension and the strong deformation did not allow to define detailed stratigraphic successions.

As regards the successions characterized by the *Argille Varicolori* Fm. grading into the arkoses and lithic arkoses of the Troina Sandstone Fm., five stratigraphic sections have been examined in detail and sampled, in the region of Cerami and Troina (Fig. 5). In the most complete sections across the Troina Sandstone Fm. (East Troina; West Cerami and South Cerami), three different lithologic intervals, already pointed out by Cassola et al. (1992), may be observed. The lower interval, made up of thick and channelized beds of coarse-grained conglomerates and sandstones, is followed by a mainly pelitic interval, characterized by thin beds of fine-grained sandstones and, finally, by an upper interval, formed by thickening and coarsening upwards coarse-grained sandstones.

The East Troina section is a composite stratigraphic section, whose lower part crops out 1.5 km east of the town, along the 575 State Road. The Troina Sandstone Fm. starts with layers of coarse conglomerates, which abruptly but transitionally replace the clays, marls and fine-grained turbiditic limestones of the *Argille Varicolori* Fm. The conglomerates, 50 m thick, pass to graded sandstones, about 20 m thick, followed by 70 m of pelites containing some thin arenaceous beds. Nearly 1 km east of Troina, between Monte Ragone and Monte Eliseo, pelites and thin sandstones can be observed for further 175 m. In the following 35 m the sandstone layers become thicker and coarser and, finally, they are replaced by conglomerates forming the uppermost 100 m of the succession (Fig. 5).

In the Serro Scarvi area, nearly 4 km south-east of Troina, the transition from the *Argille Varicolori* to the Troina Sandstone Fms. may be examined in detail. Only some tens of metres of conglomerates and sandstones of the Troina Sandstone Fm. are exposed, because a minor thrust which allows the *Argille Varicolori* to override the Troina sandstones (Fig. 5). The upper fifty metres of the *Argille Varicolori* Fm., made up of marls and fine-grained turbiditic limestones, include some arenaceous beds, prefacing the appearance of thick sandy-conglomeratic layers, which abruptly replace the underlying mainly pelagic deposits.

In the West Cerami section, W of the village along the 120 State Road, the transition from the *Argille Varicolori* Fm. to the Troina Sandstone Fm. is well exposed (Fig. 6). This latter starts with 25 m of arenaceous turbidites followed by 65 m of coarse conglomerates, overlain by 90 m of pelites containing few arenaceous beds, which upwards become more frequent and thick. The succession is capped by 15 m of conglomerates and some arenaceous beds.

In the South Cerami section, located on the southern slope of Monte Grottele, nearly 1 km south of the village, the transition from the *Argille Varicolori* to the Troina Sandstone Fm. is particularly evident. The uppermost marly-calcareous portion of the *Argille Varicolori* Fm. is characterized by numerous levels of allodapic limestones and by the appearance of thin arenaceous beds (Fig. 7). Here, the Troina sandstones show a succession similar to that observed in the West Cerami section. The lower portion is made up of 105 m of sandstones and channelized conglomerates. These latter are more frequent upwards, and are followed by a 95 m thick interval, characterized by arenaceous beds prevailing on the pelitic ones. The succes-

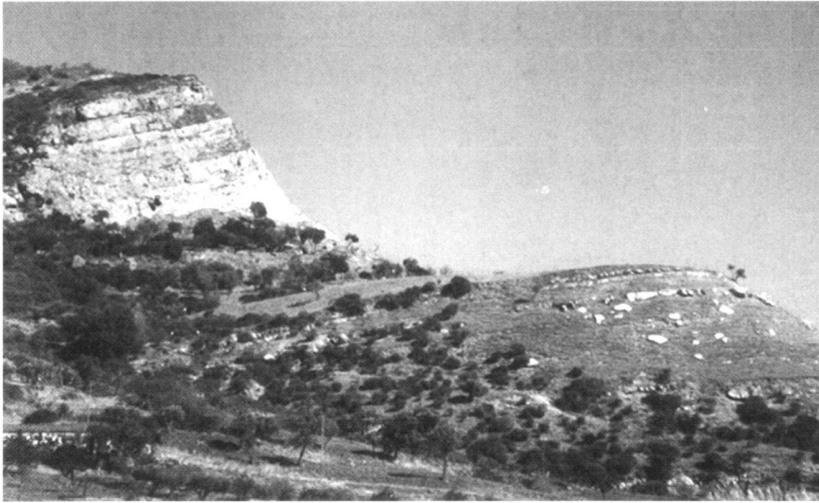


Fig. 6. South-western corner of the Cerami outcrop, between West and South Cerami sections. Conformable boundary between the marly calcareous uppermost part of the *Argille Varicolori* Fm. and the Troina Sandstone Fm.



Fig. 7. South Cerami section, southern slope of Monte Grotelle. Transitional boundary between the uppermost marly-calcareous part of the *Argille Varicolori* Fm. and the Troina Sandstone Fm. Note the first occurrence of thin arenaceous beds (arrow) within the *Argille Varicolori* Fm.

sion ends with nearly 55 m of alternating conglomerates and sandstones (Fig. 5).

The North Cerami section, located nearly 500 m north of the village, lacks of the lowermost portion, and consists only of 60 m of the lower sandy-conglomeratic interval and of nearly 30 m of the overlying pelitic interval (Fig. 5).

## 6. Biostratigraphic data

130 samples, collected in the previously described logs (Fig. 4 and 5) have been analyzed with respect to foraminifera and coccoliths. The latter have been studied after the taxa were concentrated owing to several centrifugations.

Taking into account the results of the biostratigraphic studies carried out on turbiditic formations of the southern Apennines, Calabria and Peloritani Mountains (Bonardi et al. 1980, 1988; Patacca et al. 1992; de Capoa et al. 1997), we have considered only the FAD (First Appearance Datum) of the taxa, because the LAD (Last Appearance Datum) is meaningless in turbiditic sediments, as well as the state of preservation of the taxa and the quantitative analysis. The above mentioned studies led to a general re-juvenation of formations formerly considered Cretaceous or Paleogene in age and demonstrated that the reworking of coccoliths and foraminifera in turbiditic successions is systematic and criteria useful to distinguish reworked and unreworked taxa do not exist. Conse-

Tab. 2. Coccolithid assemblages recognized in the samples collected in the Serro Scarvi section of the *Argille Varicolori* Fm.

Name of section:	SERRA SCARVI																
Sample:	139	140	142	143	144	146	147	148	149	150	151	153	154	155	156	157 a	157 b
<i>Braarudosphaera bigelowi</i>	+											+					
<i>Coccolithus miopelagicus</i>	+	+	+	+		+	+			+	+	+	+	+	+	+	+
<i>Coccolithus miopelagicus</i> >20µ					+						+						
<i>Coccolithus pelagicus</i>	+		+	+	+			+	+		+	+	+	+		+	+
<i>Coronocyclus nitescens</i>	+																
<i>Cyclicargolithus abisectus</i>	+	+	+	+	+			+	+	+	+	+	+	+	+	+	+
<i>Cyclicargolithus floridanus</i>	+	+			+	+	+			+	+	+	+	+	+	+	+
<i>Discoaster adamanteus</i>	+					+						+		+			
<i>Discoaster calcosus</i>	+																
<i>Discoaster deflandrei</i>	+		+							+		+	+	+	+	+	+
<i>Discoaster aff. formosus</i>	+																
<i>Discoaster</i> spp.														+	+		
<i>Ericsonia cava</i>	+									+	+		+	+	+	+	+
<i>Ericsonia obruta</i>	+		+	+		+	+			+	+	+	+	+	+	+	+
<i>Geminolithella rotula</i>					⊗							⊗		⊗	⊗		
<i>Helicosphaera cf. carteri</i>																	⊗
<i>Helicosphaera euphratis</i>	+	+	+		+	+					+	+	+	+	+	+	+
<i>Helicosphaera gertae</i>					⊗							⊗	⊗	⊗	⊗		
<i>Helicosphaera truempyi</i>					+										+	+	
<i>Helicosphaera cf. truempyi</i>																	+
<i>Pedinocyclus larvalis</i>	+																
<i>Pontosphaera</i> spp.	+	+															
<i>Pyrocyclus hermosus</i>	+				+	+				+	+		+	+	+	+	+
<i>Reticulofenestra daviesi</i>																	+
<i>Reticulofenestra gartneri</i>	+	+	+	+						+	+			+			
<i>Reticulofenestra perplexa</i>	+	+			+	+	+	+	+	+	+		+	+	+	+	+
<i>Reticulofenestra</i> sp.																	+
<i>Sphenolithus conicus</i>																	+
<i>Sphenolithus aff. dissimilis</i>																	+
<i>Sphenolithus cf. dissimilis</i>																	+
<i>Sphenolithus moriformis</i>	+			+	+	+	+	+	+	+	+	+	+	+	+	+	+
<i>Sphenolithus</i> sp.																	+
<i>Thoracosphaera</i> spp.	+			+									+			+	+
<i>Triquetrorhabdulus carinatus</i>											+					+	

+ occurrence; ⊗ marker

quently, only a minimum age could be proposed for the fossiliferous samples.

40 of the examined 130 samples resulted barren. The assemblages are generally poor and rests are often highly deformed; coccoliths are more or less overgrown or dissolved.

All the collected samples are characterized by the prevalence of reworked taxa (up to 90% and more). Among them Paleogene forms prevail, but also Cretaceous species are observable. Nevertheless, in all the studied formations (*Argille Varicolori*, Tusa Tuffite and Troina Sandstone) taxa whose first occurrence is early Miocene in age have been identified and they are indicated in the columns of figures 4 and 5.

Unreworked coccoliths recognized in the uppermost levels of the *Argille Varicolori* Fm. are shown in Tables 2 and 3. The occurrence of *Discoaster druggi*, *Geminolithella rotula*, *Helicosphaera ampliaptera*, *H. carteri* and *H. gertae* both in the

Tab. 3. Coccolithid assemblages recognized in the samples collected in the Poggio Maria and South Cerami sections of the *Argille Varicolori* Fm.

Name of Section:	POGGIO MARIA										SOUTH CERAMI															
Sample:	10	11	12	14	15	16	17	18	19	114	115	116	117	118	119	120	121	122	123	124	125	126 a	126 b			
<i>Braarudosphaera bigelowi</i>									+						+									+		
<i>Coccolithus miopelagicus</i>				+				+		+	+	+	+	+	+	+	+	+	+	+	+	+	+	+	+	
<i>Coccolithus pelagicus</i>	+	+	+	+	+	+	+	+	+	+	+	+	+	+	+	+	+	+	+	+	+	+	+	+	+	
<i>Coronocyclus nitescens</i>											+	+		+	+									+		
<i>Cyclicargolithus abisectus</i>	+	+	+	+	+	+	+	+	+	+	+	+	+	+	+	+	+	+	+	+	+	+	+	+	+	
<i>Cyclicargolithus floridanus</i>	+			+	+	+	+	+	+	+	+	+	+	+	+	+	+	+	+	+	+	+	+	+	+	
<i>Discoaster calcosus</i>	+																									
<i>Discoaster deflandrei</i>	+																									
<i>Discoaster cf. deflandrei</i>	+																									
<i>Discoaster druggi</i>																									⊗	
<i>Discoaster cf. druggi</i>																									⊗	
<i>Discoaster</i> spp.																									+	
<i>Ericsonia cava</i>	+	+													+	+	+	+	+	+				+	+	
<i>Ericsonia obruta</i>	+														+	+	+	+	+	+				+	+	
<i>Geminolithella rotula</i>																								⊗	⊗	
<i>Helicosphaera ampliaptera</i>	⊗																									
<i>Helicosphaera carteri</i>	⊗			⊗							⊗														⊗	
<i>Helicosphaera cf. carteri</i>	⊗	⊗									⊗														⊗	
<i>Helicosphaera euphratis</i>																+	+	+	+					+	+	
<i>Helicosphaera cf. euphratis</i>	+																									
<i>Helicosphaera gertae</i>																									⊗	
<i>Helicosphaera cf. truempyi</i>																									+	
<i>Helicosphaera</i> spp.																									+	
<i>Pontosphaera ocellata</i>																										
<i>Pontosphaera</i> spp.																									+	
<i>Pyrocyclus hermosus</i>																									+	
<i>Reticulofenestra daviesi</i>																									+	
<i>Reticulofenestra gartneri</i>																									+	
<i>Reticulofenestra perplexa</i>	+																								+	
<i>Reticulofenestra</i> sp.																									+	
<i>Sphenolithus conicus</i>																									+	
<i>Sphenolithus cf. conicus</i>																									+	
<i>Sphenolithus moriformis</i>	+	+																							+	
<i>Sphenolithus</i> spp.	+	+																							+	
<i>Thoracosphaera</i> sp.																									+	
<i>Triquetrorhabdulus carinatus</i>	+																								+	

+ occurrence; ⊗ marker

Serro Scarvi and Poggio Maria sections (Fig. 4 and 5) testifies an age not older than Aquitanian (Zone NN1-NN2 of Martini 1971 = Zone CN1 of Okada & Bukry 1980). In the South Cerami section (Tab. 2) the samples 114–120 and 121–124 furnished taxa which start from the late Rupelian (*Sphenolithus distentus*, *Helicosphaera wilcoxoni*, *Chiasmolithus altus*) and the Chattian (*Sphenolithus ciperoensis*, *Triquetrorhabdulus carinatus*), respectively. Only in the uppermost samples (125–126) taxa which start from the Aquitanian (*Discoaster druggi*, *Geminolithella rotula*, *Helicosphaera carteri*, *H. gertae*) have been recognized, but, taking into account that all the studied samples have been collected across only 30 metres of the succession, we consider as the most probable an early Miocene age for all the levels of this section.



Oligocene Globigerinidae and small Upper Cretaceous Heterohelicidae, has been recognized. Owing to the co-existence of *Pseudohastigerina micra*, *P. naguwichiensis*, *Chiloguembelina cubensis*, *Globigerina ampliapertura*, *G. increbescens* and *G. sellii*, the reported assemblage would be representative of the Zone P19 (Blow 1969) and should be attributed to the early Oligocene. The nannoplankton assemblages, recognized in the same samples, however, demonstrate that all the taxa must be considered reworked, except *Globigerina praebulloides*, *Globorotaloides suteri*, *Catapsydrax unicavus* and *C. dissimilis*.

In the Tusa Tuffite Fm. several coccolith taxa occur, which start from the early Miocene (*Discoaster druggi*, *Geminilithella rotula*, *Helicosphaera carteri* and *Triquetrorhabdulus milowii*) occur (Tab. 4; Fig. 4). The most significant datum, however, is the finding (Fig. 4), in the lower part of the succession of the upper Halaesa sheet section (sample 36), of *Sphenolithus belemnoides*, whose first occurrence is reported in the upper part of the Zone NN2 of Martini (1971) = Zone CN2 of Okada & Bukry (1980). Consequently, the age of the Tusa Tuffite Fm. is from the bottom not older than the early Burdigalian.

The Tusa Tuffite Fm. is very poor in foraminifera. Very scarce planktonic and benthonic (mainly agglutinant) foraminifers and radiolaria are present, in just a few samples. In the lower Halaesa sheet section the planktonic foraminifera are almost completely lacking and mainly reworked Upper Cretaceous (Globotruncanidae) and Paleocene-Eocene (*Morozovella aequa*) taxa have been identified. It is probable that *Catapsydrax unicavus* and *C. dissimilis* are the only unreworked taxa. In the upper Halaesa sheet section (Fig. 4) rather more planktonic microfauna is contained and the following taxa have been identified:

*Acarinina* sp.  
*Globigerina galavisi*  
*Globigerina venezuelana*  
*Globigerina praebulloides*  
*Globigerina woodi*  
*Globigerina connecta*  
*Globigerinoides* gr. *trilobus*  
*Globigerinita naparimaensis*  
*Globigerinita baroemoenensis*  
*Globoquadrina dehiscens*  
*Globoquadrina* cf. *dehiscens*  
*Globorotaloides suteri*  
*Catapsydrax unicavus*  
*Catapsydrax dissimilis*  
*Turborotalia* gr. *cerrouzulensis*

This assemblage confirms the results obtained through the coccolith analysis, because taxa, whose first occurrence is early Miocene in age (*Globigerina woodi*, *G. connecta*, *Globigerinita naparimaensis*, *G. baroemoenensis*, primitive forms of *Globoquadrina dehiscens*) have been recognized. Specimens have also been found that present *Globigerinoides trilobus* morphology, but the existence of supplementary openings cannot be warranted, due to the poor state of preservation. Particularly, the recognition of *Globigerina woodi*, *Globigerinita naparimaensis* and *Globigerinoides* gr. *trilobus* testifies the existence of taxa which occurred as from the Burdigalian (Zones N5-N6; Blow 1969).

*maensis* and *Globigerinoides* gr. *trilobus* testifies the existence of taxa which occurred as from the Burdigalian (Zones N5-N6; Blow 1969).

As far as the Troina Sandstone Fm. is concerned, the only significant taxa of this formation are coccoliths (Tab. 5) and, also in this case, taxa which start from the early Miocene (*Geminilithella rotula*, *Helicosphaera carteri* and *H. gertae*) have been recognized (Fig. 5). The most significant datum is the occurrence in the middle part of the succession of *Calcidiscus macintyreii* (sample C 101), *C. leptoporus* (sample C 107) and *Discoaster variabilis* (sample C 107) in the North Cerami and West Cerami sections, respectively (Fig. 5). These taxa, whose first occurrence is recognized in the Zone NN4 of Martini (1971) = Zone CN3 of Okada & Bukry (1980), therefore, testify that the Troina Sandstone Fm. reaches an age not older than the late Burdigalian. As regards the foraminifera, a microfauna made up mainly of agglutinant species (*Astrorhynchidae*, *Reophax* sp., *Ammodiscus* sp., *Glomospira* sp., *Cyclammina* sp.) has been recognized. Few radiolaria, benthonic calcareous (mainly *Nodosaria* sp.) and planktonic foraminifera are also present. The latter are characterized by the following assemblage:

*Globigerina galavisi*  
*Globigerina tripartita*  
*Globigerina venezuelana*  
*Globigerina euapertura*  
*Globigerina sellii*  
*Globigerina* cf. *ampliapertura*  
*Globigerina increbescens*  
*Globigerina eocaena*  
*Globigerina corpulenta*  
*Globigerina praebulloides*  
*Neogloboquadrina nana*  
*Globorotaloides suteri*  
*Catapsydrax unicavus*  
*Catapsydrax dissimilis*

Also this assemblage, because of the occurrence of specimens of the groups *Globigerina eocaena-corpulenta* and *G. ampliapertura-increbescens*, would be early Oligocene in age, but the coccolith assemblages of the same samples suggest an early Miocene age.

In conclusion, the above data indicate an age not older than the Burdigalian for the syn-orogenic, volcanoclastic and siliciclastic, deposits of the Troina-Tusa Unit, and this age agrees with that of the uppermost levels of the underlying *Argille Varicolori* Fm., in which taxa showing an age not older than the Aquitanian have been found.

## 7. Discussion and conclusions

The Tusa Tuffite and Troina Sandstone Formations conformably lie on the succession *Argille Scagliose*-*Polizzi*-*Argille Varicolori* Fms., and constitute the uppermost, heteropic, deposits of the stratigraphic successions characterizing the Troina-Tusa Unit. The transition is marked by the sudden ap-



sumption of the Maghreb Ocean, the Africa-Europe continental collision and the back-thrusting of Sicilide terrains onto the more internal Peloritanean units (*i.e.* the Antisicilide Complex), may be confirmed only by attributing a definitive age to the base of the formations (Floresta Calcarenes, Reitano Flysch and Rocca Mercadante Calcarenes; Fig. 3) unconformably lying both on all the Sicilide and Antisicilide Units and post-dating the nappe stacking. The base of the first two formations has been considered as Burdigalian in age (Lentini et al. 1990, 1995; La Manna et al. 1995), whereas for the last a middle Miocene, probably Langhian, age has been proposed (Fravega et al. 1993). Although a Burdigalian age for both Floresta Calcarene and Reitano Flysch Fms. could be admitted also considering the biostratigraphic results of this study, we believe more probable a Langhian age for the basal levels of the Floresta calcarenites, already recognized by Bonardi et al. (1980) in the Novara di Sicilia area (Monte Ritagli di Lecca section). In any case, our biostratigraphic data definitively allow to exclude ages older than late Burdigalian for all the deposits which have been up to now comprised in the Reitano Flysch Fm.

Taking into account the data exposed in this paper, the Burdigalian-Serravallian age proposed by Carbone et al. (1990) for the Troina sandstones, still remains an open problem. Such an age agrees with the reconstruction advanced by those authors who consider the Troina sandstones resting unconformably on the *Argille Varicolori* Fm. and, therefore, ascribe them to the Reitano Flysch Fm. This interpretation undoubtedly would solve many problems, but it is not supported by our field observations. In fact, all the outcrops (Cerami; Troina; Ancipa Lake; Serro Scarvi) show a transitional, even if abrupt, boundary between the pelagic terrains of the *Argille Varicolori* Fm. and the lower conglomerates of the Troina Sandstone Fm. Petrographic analyses, moreover, have pointed out close resemblances between the sandstones constituting the Troina and Tusa Fms. On the contrary, the sandstones of the Troina and Reitano Fms. are characterized by marked compositional differences (Puglisi 1979). Up to now, our research did not allow to recognize in the Troina Sandstone Fm. taxa whose first occurrence is younger than Burdigalian, but if the data of Carbone et al. (1990) will be confirmed by further studies, a more recent deformation, if not of the whole Sicilide Basin at least of its less internal portion, will have to be admitted.

We agree with the paleotectonic evolution proposed by La Manna et al. (1995), but we do not accept a late Oligocene-Aquitania age for the deformation of the Sicilide Basin. We believe that the Sicilide accretionary wedge formed more recently and more rapidly, in the time-span late Burdigalian-middle Langhian, constrained by the age of the uppermost levels of the Sicilide Units successions and that of the terrains unconformably sedimented on all of them.

The above reported data, moreover, question also the paleotectonic evolution so far indicated for the external units of the Maghreb Chain. In fact, it seems very difficult to admit

the starting of the Numidian sedimentation as from the Oligocene in the Panormide and Imerese Zones, and the stacking of the nappes originated from the same zones before the Langhian or, more probably, the Serravallian.

Finally, the biostratigraphic data constraining the deformation age of the Sicilide Basin have important implications for the whole orogenic system of the Central-Western Mediterranean. The beginning of the foredeep stage and the first tectogenetic phase in the Sicilide basin result really to be coeval with the ones already recognized in the Flysch Domain of the Betic and Rifian sectors (Martín-Algarra 1987; Guerrera et al. 1993, and references therein).

In other words, the building up of the accretionary wedge, the closure of the oceanic area and the consequent continental collision, are synchronous at the eastern and western extremities of the Maghreb Chain, which at present are about 1.700 km apart. In this framework it is very difficult to admit the older, either Eocene or Oligocene, deformation age for the Tellian sector of the Maghreb Chain, pointed out by several authors. The synchronous deformation from the Gibraltar Arc to the Calabria-Peloritani Arc allows us to admit a same event as responsible for the neo-Alpine tectonics, which involved the Maghreb Flysch Domain and later the continental margins of the Iberia and Africa plates. Taking into account the age of the deformation, this event may be easily indicated as the opening of the the Algero-Provençal Basin.

#### Acknowledgements

This study was supported by the following grants: MURST 40%-Urbino University 1998 (resp. V. Perrone).

#### REFERENCES

- AMODIO MORELLI, L., BONARDI, G., COLONNA, V., DIETRICH, D., GIUNTA, G., IPPOLITO, F., LIGUORI, V., LORENZONI, S., PAGLIONICO, A., PERRONE, V., PICCARRETA, G., RUSSO, M., SCANDONE, P., ZANETTIN-LORENZONI, E. & ZUPPETTA, A. 1976: L'arco calabro-peloritano nell'orogene appenninico-maghrebide. *Mem. Soc. geol. it.* 17, 1-60.
- AUBOUIN, J. & DURAND DELGA, M. 1971: Aire méditerranéenne. In: *Encyclopaedia universalis* 10, 743-745, Paris.
- BIANCHI, F., CARBONE, S., GRASSO, M., INVERNIZZI, G., LENTINI, F., LONGARETTI, G., MERLINI, S. & MOSTARDINI, F. 1987: Sicilia Orientale: profilo Nebrodi-Iblei. *Mem. Soc. geol. it.* 38, 429-458.
- BLOW, W.H. 1969: Late-Middle Eocene to Recent planktonic foraminiferal biostratigraphy. In: *Proc. 1st Int. Conf. on Plankt. Microfossils*, Geneva 1967 (Ed. by BRÄNNIMANN, R. & RENZ, H.H.). Leiden: E.J. Brill 1, 199-442.
- BONARDI, G., GIUNTA, G., PERRONE, V., RUSSO, M., ZUPPETTA, A. & CIAMPO, G. 1980: Osservazioni sull'evoluzione dell'Arco Calabro-peloritano nel Miocene inferiore: la Formazione di Stilo-Capo d'Orlando. *Boll. Soc. geol. it.* 99, 365-393.
- BONARDI, G., AMORE, O., CIAMPO, G., DE CAPOA, P., MICONNET, P. & PERRONE, V. 1988: Il Complesso Liguride Auct.: stato delle conoscenze e problemi aperti sulla sua evoluzione pre-appenninica ed i suoi rapporti con l'Arco Calabro. *Mem. Soc. geol. it.* 41, 17-35.
- BONARDI, G., DE CAPOA, P., FIORETTI, B. & PERRONE, V. 1994: Some remarks on the Calabria-Peloritani Arc and its relationship with the Southern Apennines. *Boll. Geof. teor. appl.* 36, 483-492.

- BONARDI, G., GIUNTA, G., MESSINA, A., PERRONE, V. & RUSSO, S. 1996: The Calabria-Peloritani Arc and its correlation with Northern Africa and Southern Europa. IGCP Project 276. *Newsl.* 6, 27–90.
- BOUILLIN, J.P., DURAND DELGA, M., GÉLARD, J., LEIKINE, M., RAOULT, J.F., RAYMOND, D., TEFIANI, M. & VILA, J.M. 1970: Définition d'un flysch massylien et d'un flysch maurétanien au sein des flyschs allochtones d'Algérie. *C. R. Acad. Sci. (Paris)* 270, 2249–2252.
- BOUILLIN, J.P., DURAND DELGA, M. & OLIVIER, P. 1986: Betic-Rifian and Tyrrhenian Arcs: distinctive features, genesis and development stages. In: *The Origin of Arcs* (Ed. by WEZEL, F.C.). Amsterdam: Elsevier, 321–338.
- BOUILLIN, J.P., DUMONT, T., GIUNTA, G. & ONDREJICKOVÁ, A. 1995: Un témoin des séries jurassiques du Bassin Maghrébin en Sicile: la formation de la Contrada Lanzeri, à la base du flysch maurétanien du Monte Soro. *C. R. Acad. Sci. (Paris)* 320, 601–607.
- CAIRE, A. 1970: Sicily in its Mediterranean setting. In: *Geology and History of Sicily* (Ed. by ALVAREZ, W. & GOHRBANDT, K.H.A.). Tripoli: Petroleum Exploration Libyan Society, 145–170.
- CARBONE, S., CATALANO, S., GRASSO, M., LENTINI, F. & MONACO, C. 1990: Carta geologica della Sicilia centro-orientale. S.E.L.C.A., Firenze.
- CASSOLA, P., COSTA, E., LOIACONO, F., MORETTI, E., MORLOTTI, E., PUGLISI, D. & VILLA, G. 1992: New sedimentologic, petrographic, biostratigraphic and structural data on the Reitano Flysch (Maghreb Chain, Sicily). *Riv. it. Paleont. Strat.* 98, 205–228.
- CASSOLA, P., LOIACONO, F., MORETTI, E., NIGRO, F., PUGLISI, D. & SBARRA, R. 1995: Sedimentology, petrography and structure of the Reitano Flysch in the northern sector of the Nebrodi Mountains (NE Sicily). *Giorn. Geol.* 57, 195–217.
- COURME, M.D. & MASCLE, G. 1988: Nouvelles données stratigraphiques sur les séries oligo-miocènes des unités siciliennes: conséquences paléogéographiques. *Bull. Soc. géol. Fr.* 8, 105–118.
- DE CAPOA, P., GUERRERA, F., PERRONE, V. & SERRANO, F. 1997: New biostratigraphic data on the Frazzanò Formation (Longi-Taormina Unit): consequences on defining the deformation age of the Calabria-Peloritani Arc southern sector. *Riv. it. Paleont. Strat.* 103, 343–356.
- DIDON, J. 1969: Etude géologique du Campo de Gibraltar (Espagne méridionale). Thèse Univ. Paris, 539 p.
- DIDON, J. & HOYEZ, B. 1978: Les séries à faciès mixtes, numidien et grésomiacé, dans le Rif occidental (Maroc). *C.R. somm. Soc. géol. Fr.* 6, 304–307.
- DUÉE, G. 1969: Étude géologique des Monts Nebrodi (Sicile). Thèse Fac. Sci. Univ. P. et M. Curie Paris, 424 p., Paris.
- DURAND DELGA, M. 1971: Les unités à mésozoïque métamorphique d'El Milia à Texenna (Algérie) et leur cadre structural. *Bull. Soc. géol. Fr.* 13, 328–337.
- 1980: La Méditerranée occidentale: étapes de sa genèse et problèmes structuraux liés à celle-ci. *Mém. h. sér. Soc. géol. Fr.* 10, 203–224.
- FRAVEGA, P., GRASSO, M. & PEDLEY, H.M. 1993: Sedimentology, palaeoenvironment, age and tectonic setting of the Sperlinga bioclastic carbonate deposits, Central-North Sicily. *Boll. Soc. geol. it.* 112, 191–200.
- GIUNTA, G. 1985: Problematiche ed ipotesi sul Bacino Numidico nelle Maghrebidi siciliane. *Boll. Soc. geol. it.* 104, 239–256.
- GIUNTA, G., BONARDI, G., CARROTTA, R., MARTINES, P. & SABATINO, G. 1982: Nuove vedute sulle Unità Sicilidi Auct. dei Monti Nebrodi: schema geologico preliminare. In: *Guida alla Geologia della Sicilia occidentale*, Soc. geol. it., spe. Publ. 97–101.
- GUERRERA, F., LOIACONO, F. & GRASSO, M. 1986: Dati preliminari sulle successioni oligo-mioceniche «miste» affioranti lungo la Catena Bético-Maghrebide-Appennino Meridionale: una famiglia di flysch con evidenti implicazioni paleogeografiche e paleotettoniche. *Boll. Soc. geol. it.* 105, 99–110.
- GUERRERA, F., MARTIN-ALGARRA, A. & PERRONE, V. 1993: Late Oligocene-Miocene syn-late-orogenic successions in Western and Central Mediterranean Chains from the Betic Cordillera to the Southern Apennines. *Terra Nova* 5, 525–544.
- GUERRERA, F. & WEZEL, F.C. 1974: Nuovi dati stratigrafici sui flysch oligo-miocenici siciliani e considerazioni tettoniche relative. *Riv. miner. sicil.* 25, 27–51.
- LA MANNA, F., GRASSO, M., ROMEO, M., MANISCALCO, R. & DI STEFANO, A. 1995: Evoluzione tettonico-sedimentaria neogenica del bordo tirrenico dei Monti Nebrodi (Sicilia settentrionale). *Studi geol. Camerti*, vol. spec. 1995/2, 293–305.
- LENTINI, F. 1982: The geology of the Mt. Etna basement. *Mem. Soc. geol. it.* 23, 7–25.
- LENTINI, F., CARBONE, S., CATALANO, S., GRASSO, M. & MONACO, C. 1991: Presentazione della Carta Geologica della Sicilia centro-orientale. *Mem. Soc. geol. it.* 47, 145–156.
- LENTINI, F., CARBONE, S., CATALANO, S. & GRASSO, M. 1995: Principali lineamenti strutturali della Sicilia nord-orientale. *Studi geol. camerti*, vol. spec. 1995/2, 319–329.
- LENTINI, F. & VEZZANI, L. 1978: Tentativo di elaborazione di uno schema strutturale della Sicilia Orientale. *Mem. Soc. geol. it.* 19, 495–500.
- MARTIN-ALGARRA, A. 1987: Evolución geológica del contacto entre las Zonas Internas y las Zonas Externas de la Cordillera Bética. Doctoral Thesis Univ. of Granada, 1171 p.
- MARTINI, E. 1971: Standard tertiary and quaternary calcareous nannoplankton zonation. In: *Proc. 2nd Int. Conf. Plankt. Microfossils* (Ed. by A. FARINACCI), Ed. Tecnoscienze, Roma, 739–785.
- OGNIBEN, L. 1960: Nota illustrativa dello schema geologico della Sicilia nord-orientale. *Riv. miner. sicil.* 11, 183–212.
- OKADA, H. & BUKRY, D. 1980: Supplementary modification and introduction of code numbers to the low-latitude coccolith biostratigraphic zonation (Bukry, 1973; 1975). *Marine Micropal.* 5, 321–325.
- OLIVIER, P., DURAND DELGA, M., MANIVIT, H., FEINBERG, H. & PEYBERNES, B. 1996: Le substratum jurassique des flyschs maurétaniens de l'ouest des Maghrebides: l'unité de Ouareg (région de Targuist, Rif, Maroc). *Bull. Soc. géol. Fr.* 5, 609–616.
- PATACCA, E., SCANDONE, P., BELLATALLA, M., PERILLI, N. & SANTINI, U. 1992: The numidian-sand event in the Southern Apennines. *Mem. Sci. geol. Padova* 43, 297–337.
- PUGLISI, D. 1979: Variazioni composizionali nelle Arenarie del Flysch di Reitano (monti Nebrodi, Sicilia centro-settentrionale). *Miner. Petrogr. Acta* 23, 13–46.
- 1987: Le successioni torbiditiche cretacico-terziarie della Sicilia nord-orientale nel quadro dell'evoluzione del settore meridionale dell'arco calabro-peloritano e della catena maghrebide siciliana. *Giorn. Geol.* 49, 167–185.
- 1992: Le successioni torbiditiche «tardorogene» della Sicilia orientale. *Giorn. Geol.* 54, 181–194.
- ROURE, F., HOWELL, D.G., MULLER, C. & MORETTI, I. 1990: Late Cenozoic subduction complex of Sicily. *J. struct. Geol.* 12, 259–266.
- VEZZANI, L., LANZAFAME, G., FERARRA, E., FRAZZETTA, G., DI GERONIMO, I. & AMORE, T. 1972: Foglio 611 Mistretta della Carta Geologica d'Italia in scala 1:50.000. *Serv. geol. d'Italia, L.A.C.*, Firenze.
- WEZEL, F.C. & GUERRERA, F. 1973: Nuovi dati sulla età e posizione strutturale del Flysch di Tusa in Sicilia. *Boll. Soc. geol. it.* 92, 193–211.
- WILDI, W. 1983: La chaîne tello-rifaine (Algérie-Maroc-Tunisie): structure, stratigraphie et évolution du Trias au Miocène. *Rev. Géol. dyn. Géogr. phys.* 24, 201–297.

Manuscript received February 11, 1999

Revision accepted January 18, 2000



