

Zeitschrift: Entomologica Basiliensia
Herausgeber: Naturhistorisches Museum Basel, Entomologische Sammlungen
Band: 15 (1992)

Artikel: Notes on some genera of the family Lycidae (Insecta: Coleoptera)
Autor: Bocák, L. / Bocáková, M.
DOI: <https://doi.org/10.5169/seals-980533>

Nutzungsbedingungen

Die ETH-Bibliothek ist die Anbieterin der digitalisierten Zeitschriften. Sie besitzt keine Urheberrechte an den Zeitschriften und ist nicht verantwortlich für deren Inhalte. Die Rechte liegen in der Regel bei den Herausgebern beziehungsweise den externen Rechteinhabern. [Siehe Rechtliche Hinweise.](#)

Conditions d'utilisation

L'ETH Library est le fournisseur des revues numérisées. Elle ne détient aucun droit d'auteur sur les revues et n'est pas responsable de leur contenu. En règle générale, les droits sont détenus par les éditeurs ou les détenteurs de droits externes. [Voir Informations légales.](#)

Terms of use

The ETH Library is the provider of the digitised journals. It does not own any copyrights to the journals and is not responsible for their content. The rights usually lie with the publishers or the external rights holders. [See Legal notice.](#)

Download PDF: 24.01.2025

ETH-Bibliothek Zürich, E-Periodica, <https://www.e-periodica.ch>

Notes on some genera of the family Lycidae (Insecta: Coleoptera)

by L. Bocák and M. Bocáková

Abstract: The paper revises the taxonomic position of some taxa of the Lycidae. The genus *Plateros* Bourgeois, 1879 is made a junior synonym of *Melaneros* Fairmaire, 1877 and *Dictyoptera braeti* Bourgeois, 1905 is transferred to the genus *Lopheros* Leconte, 1881. The genus *Slipinskia* n. gen. is proposed for African species of the *Stadenus* Wath. and is also designated to be the type genus of *Slipinskiinina* n. subtrib.

Key words: Coleoptera Lycidae – taxonomy – new taxa - new synonym – new combination.

Recently we have been examining some types from the collections of C. O. Waterhouse (British Museum Natural History, London, BMNH), M. Pic and L. Fairmaire (Muséum d'Histoire Naturelle Paris, MHNP). We have found out it is necessary to do some changes in the sense of some genera. We also must revise placing some genera in taxa of the family rank which we did (on the basis of procurable informations) earlier (BOCÁK & BOCÁKOVÁ, 1989).

Abbreviations:

BMNH – British Museum of Natural History, London, Mrs E. Peacock

MHNP – Muséum d'Histoire Naturelle, Paris, Dr J. Menier

IRSN – Institut Roayl des Sciences Naturelles de Belgique, Bruxelles,
Dr L. Baert

Genus *Melaneros* Fairmaire, 1877

Melaneros FAIRMAIRE, 1877, Nouv. Ent. 2: 173

Plateros BOURGEOIS 1879, Ann. Soc. Ent. Belg. 22:19

The genus *Melaneros* was proposed by FAIRMAIRE (1877) for 6 species from islands Tonga, Fiji and Samoa. BLAIR (1928) examined the material from the Hamburg Museum and proposed *M. atroviolaceus* Fairm. to be the type species of *Melaneros*. Unfortunately, types in the Hamburg Museum were damaged (Prof. Dr. R. Abraham letter communication).

We have examined the lectotype of *M. atroviolaceus* Fairm. (hereby designated) and lectotype of *M. quadraticollis* Fairm. (hereby designated) from coll. Fairmaire (MHNP). We have found out they are identical from the generic point of view with the genus *Plateros* Bourgeois

(type species – *Eros alatus* Newm). Therefore we consider the name *Plateros* Bourgeois, 1879 to be a junior synonym of *Melaneros* Fairm., 1877.

The genus *Melaneros* has filiform to slightly serrate antennae (males and females), pronotum without carinae, only with a very small cell in the middle portion at the basal margin. Elytra with 9 slightly conspicuous costae which are not differentiated as primary and secondary ones, male genitalia without paramerae, aedeagus often with long apical projections, phallobase small. Ovipositor broad, with shortened valvifers.

At present this genus comprises over 300 known species occurring in all zoogeographical regions.

Stadenus Waterhouse, 1879

Stadenus WATERHOUSE, 1879: 61.

Type species: *Porrostoma dichroum* Waterhouse, 1877, original designation.

On the basis of the examination of the holotype of *Stadenus dichrous* (Wath.) we found out it must be transferred from the subfamily Erotinae to the subfamily Metriorrhynchinae (subtribe Metriorrhynchina). *Synchonus* Wath. seems to be the most related to *Stadenus*.

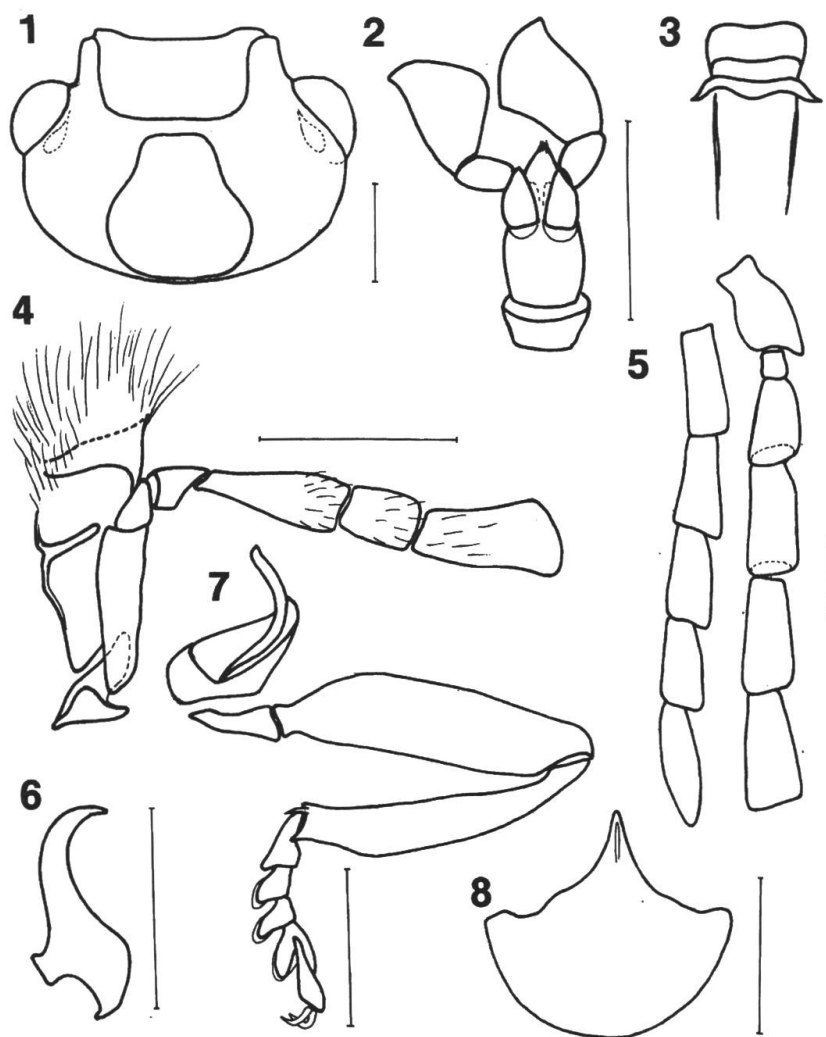
Slipinskiinina n. subtrib.

Type genus: *Slipinskia* n. gen.

The subtribe Slipinskiinina is established for the new genus *Slipinskia* within the tribe Erotini of the subfamily Erotinae (BOCÁK & BOCÁKOVÁ, 1989). The description of the genus *Slipinskia* n. gen. follows.

Differential diagnosis: There are 3 distinct groups within the tribe Erotini (see BOCÁK & BOCÁKOVÁ, 1989 for the description of the tribe Erotini). The subtribe Slipinskiinina n. comprises only the genus *Slipinskia* n. gen. whose representatives show some derived features. It differs from the subtribe Erotinina in the shape of the pronotal carinae, modified apical part of aedeagus, fused paramerae which are often shortened, short spiculum gastrale, shortened valvifers of female genitalia and broader basal part of coxites. These characters are considered to be apomorphic in comparison with features of the representatives of the subtribe Erotinina.

The subtribe Taphinina (BOCÁK & BOCÁKOVÁ, 1989) shows also some apomorphic features but it distinctly differs from the subtribe Slipinskiinina in possessing different arrangement of pronotal carinae,



Figs 1-8: *Slipinskia* sp.: 1, cranium. 2, labium with labial palpi. 3, labrum and hypopharynx. 4, maxilla with maxillary palpus. 5, antenna. 6, mandible. 7, hind leg. 8, female terminal abdominal sternum.

long phallobase and very broad paramerae of a characteristic shape. The spiculum gastrale is short in both the subribes but ovipositors are specific for each of them.

***Slipinskia* n. gen.**

Stadenus WATERHOUSE, 1879 (sensu KLEINE, 1933a), parte.

Type species: *Stadenus aethiops* KLEINE, 1933b.

Head small, with antennal tubercles slightly conspicuous, eyes

small in both sexes. Mouth-parts as in Figs 2-4, 6. Antennae nearly filiform, never compressed, reaching up to elytral midlength (Fig. 5). Pronotum with well-developed lentiform median areola and an oblique fold in each lateral field (Fig. 12). Elytra always with 4 primary and 5 secondary (often interrupted) costae. Female terminal abdominal segment with spiculum gastrale shorter than the sternum (Fig. 8).

Male genitalia usually with paramerae. Length of paramerae varies, paramerae often reduced and fused to each other (Fig. 10), sometimes paramerae can be as long as the aedeagus (BOCÁK & BOCÁKOVÁ, 1989, Fig. 127). Median lobus 2 - 3 times as long as the phallobase. Female genitalia with valvifer, 1.5 times as long as coxites (Fig. 9). Female genital ducts with 2 symmetrical glands attaching to vagina.

Name derivation: Named in honour of Dr S. A. Slipinski (Warszawa) who kindly loaned us many types from ZIW.

Remarks: The sense of the genus *Stadenus* Wath. was very broad. It comprised 30 species (KLEINE, 1933a) from Afrotropical and Australian regions. While African species can be placed in the subfamily Erotinae, species from Australian region belong to the subfamily Metriorrhynchinae.

***Lopheros braeti* (Bourgeois, 1905), n. comb**

Dictyoptera braeti BOURGEOIS, 1905, Ann. Soc. Ent. Belg, 49: 46.

Head, antennae, ventral body side, legs and median part of pronotum black, scutellum brown, elytra and outer margins of pronotum rusty brown.

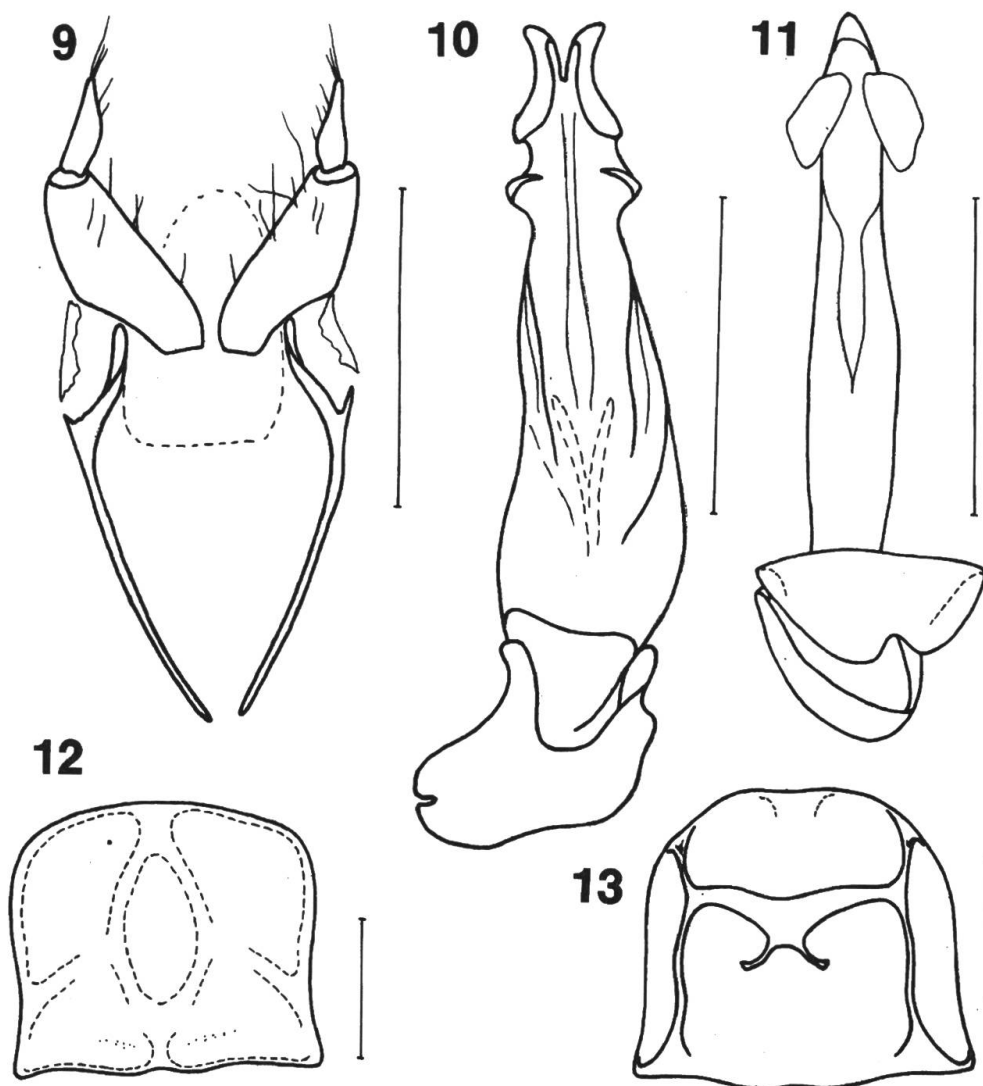
Head small, female eyes small, antennae slender, segment 1 stout, 2 small, 3 long, segment 4 is 1.2 times longer than 3. Pronotum transverse, with median longitudinal carina crossing with median transverse carina. Anterior margins strongly produced forwards, lateral margins emarginate, posterior angles projecting obliquely backward. Scutellum slightly emarginate apically.

Elytra broader than pronotum, nearly parallel-sided. Each elytron with 4 primary costae and 5 secondary ones. Reticulate cells irregular, well visible. Female genitalia free coxites, valvifers relatively long.

Body length: 9.1 mm; width at humeri: 2.9 mm.

Material examined: Holotype, ♀, «Kuraeong, P. Braet lgt.» (IRSN):

Remarks: *Dictyoptera braeti* Bourg. is transferred to the genus *Lopheros* Leconte on the basis of the examination of the holotype which has the arrangement of the pronotum identical with *Lopheros*.



Figs 9-13: *Slipinskia aethiops* (Kln.), paratypes: 9, ovipositor. 10, male genitalia. 11, male genitalia of *Stadenus dichrous* (Wath.). *Slipinskia* sp.: 12, pronotum, dorsal view. 13, prothorax, ventral view.

Acknowledgements

We would like to express our thanks to Mrs E. R. Peacock (BMNH), Dr J. Menier (MHNP) and Dr L. Baert (IRSN) who kindly loaned us material in their charge. We are also very indebted to Dr S. A. Slipinski who provided us with some material from ZIW.

Literature

- BLAIR, K. G. (1928): *Insects of Samoa. Heteromera, Bostrychidae, Malacodermata, Buprestidae*, part IV (2): 67-109.
- BOURGEOIS, J. (1879): *Lycides recueillis an Brésil par C. Van Volxem*. Ann. Soc. Ent. Belg., 22, compt. rend.: 15-19.
- BOCÁK, L. & BOCÁKOVÁ, M. (1989): *Revision of the supergeneric classification of the family Lycidae (Coleoptera)*. Polskie Pis. Ent. 59: 623-676.
- FAIRMAIRE, L. (1877): *Descriptions de Coléoptères nouveaux*. Petit Nouv. Ent., 2: 173.
- KLEINE, R. (1933a): *Coleptorum Catalogus auspiciis et auxilio W. Junk editus a S. Schenkling*. Pars 128: Lycidae, 145 pp., Berlin.
- KLEINE, R. (1933b): *Neue Lyciden und Bermerkungen zum Cat. Col. Junk-Schenkling Lycidae*. Stett. Ent. Ztg., 94: 1-20.
- WATERHOUSE, C. O. (1877): *A Monograph of the Australian species of the Coleopterous family Lycidae*. Trans. Ent. Soc. London 1877 (II): 73-86.
- WATERHOUSE, C. O. (1879): *Illustrations of typical specimens of Coleoptera in the collection of the British Museum*. Part I—Lycidae. 93 pp, London.

Address of authors:

Ladislav Bocák,
Milada Bocáková
Žilinská 13
779 00 Olomouc
Czechoslovakia