

Laoscapha phoupanense gen. et sp.nov. (Coleoptera: Tenebrionidae: Diaperinae) from Laos

Autor(en): **Schawaller, Wolfgang**

Objektyp: **Article**

Zeitschrift: **Entomologica Basiliensia et Collectionis Frey**

Band (Jahr): **35 (2016)**

PDF erstellt am: **12.07.2024**

Persistenter Link: <https://doi.org/10.5169/seals-980962>

Nutzungsbedingungen

Die ETH-Bibliothek ist Anbieterin der digitalisierten Zeitschriften. Sie besitzt keine Urheberrechte an den Inhalten der Zeitschriften. Die Rechte liegen in der Regel bei den Herausgebern.

Die auf der Plattform e-periodica veröffentlichten Dokumente stehen für nicht-kommerzielle Zwecke in Lehre und Forschung sowie für die private Nutzung frei zur Verfügung. Einzelne Dateien oder Ausdrucke aus diesem Angebot können zusammen mit diesen Nutzungsbedingungen und den korrekten Herkunftsbezeichnungen weitergegeben werden.

Das Veröffentlichen von Bildern in Print- und Online-Publikationen ist nur mit vorheriger Genehmigung der Rechteinhaber erlaubt. Die systematische Speicherung von Teilen des elektronischen Angebots auf anderen Servern bedarf ebenfalls des schriftlichen Einverständnisses der Rechteinhaber.

Haftungsausschluss

Alle Angaben erfolgen ohne Gewähr für Vollständigkeit oder Richtigkeit. Es wird keine Haftung übernommen für Schäden durch die Verwendung von Informationen aus diesem Online-Angebot oder durch das Fehlen von Informationen. Dies gilt auch für Inhalte Dritter, die über dieses Angebot zugänglich sind.

***Laoscapha phoupanense* gen. et sp.nov.
(Coleoptera: Tenebrionidae: Diaperinae) from Laos**

by Wolfgang Schawaller ^{*)}

Abstract. *Laoscapha phoupanense* gen. et sp.nov. (Tenebrionidae: Diaperinae: Scaphidemini) is described from north-eastern Laos. *Laoscapha* gen.nov. appears to be related to *Spiloscapa* Bates, 1873, with several species distributed in the Oriental and Papuan regions, and can be distinguished by its small, elongate, parallel-sided body shape, unicoloured brown surface without colour pattern or metallic reflection, eyes round, not reniform, without encroaching genal canthus, and short first metatarsomere similar to the second metatarsomere. The taxon might be an endemic element of the high mountain forest fauna of the isolated mountain Phou Pane.

Keywords. Coleoptera – Tenebrionidae – Diaperinae – Scaphidemini – *Laoscapha* gen.nov. – *Spiloscapa* – new genus – new species – taxonomy – Laos – Phou Pane

Introduction

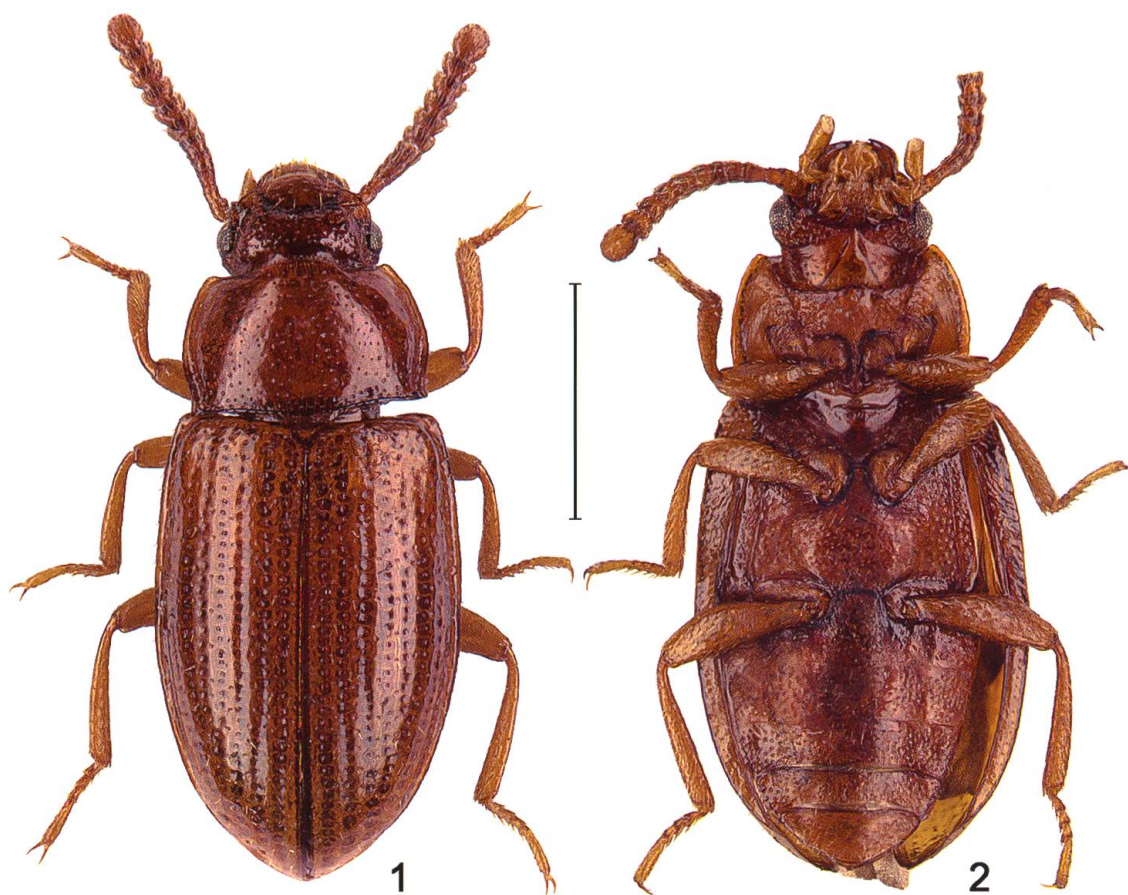
Among the huge beetle collections from Laos assembled (2003–2012) by workers and co-workers of the Basel Natural History Museum organised by Michel Brancucci (1950–2012), two specimens of a tiny Tenebrionidae were found, which belong to an undescribed genus and species of the subfamily Diaperinae Latreille, 1802, tribe Scaphidemini Reitter, 1922. Unfortunately, only two females of the new taxon are present. Since there is little possibility of obtaining males and because the new taxon can easily be recognised based on females, it is described herein. *Laoscapha* gen.nov. appears to be related to the genus *Spiloscapa* Bates, 1873, distributed in the Oriental and Papuan regions. The numerous species of *Spiloscapa* were treated by ANDO & SCHAWALLER (2006) and SCHAWALLER (1997, 2004, 2012).

The type locality of the new taxon is on Mount Phou Pane, an isolated mountain in north-eastern Laos. Very probably, *Laoscapha* gen.nov. is an endemic element of the high montane forest fauna of this mountain. Such forest dwellers are greatly endangered by increasing forest destruction, a problem not restricted only to Laos. Ecological and biogeographical information on Laos, as well as itineraries of all recent Basel expeditions are summarised by GEISER & NAGEL (2013).

Abbreviations

NHMB Naturhistorisches Museum, Basel, Switzerland
SMNS Staatliches Museum für Naturkunde, Stuttgart, Germany

^{*)} Contributions to Tenebrionidae no. 137. – For no. 136 see: Stuttgarter Beiträge zur Naturkunde A (NS) 9, 2016.



Figs 1–2. *Laoscapha phoupanense* gen. et sp.nov.: 1 – dorsal view of holotype; 2 – ventral view of paratype. Scale: 1 mm.

Laoscapha gen.nov.

Type species: *Laoscapha phoupanense* sp.nov. by monotypy and present designation.

Diagnosis. *Laoscapha* gen.nov. possesses all characters of the Diaperinae tribe Scaphidemini according to the classification of MATTHEWS & BOUCHARD (2008), for example general body shape, short and broad antennae without separate club, bidentate mandibles, epipleura terminating before apex, abdominal intercoxal process widely truncate, ovipositor short, paraproct shorter than coxites. Aedeagus shape is unknown. It can be separated from the related genus *Spiloscapa* mainly by the body shape. Whereas all species of *Spiloscapa* have a compact ovate or round body shape with the pronotum widest at base, *Laoscapha* gen.nov. has an elongate parallel body shape with the pronotum widest in the middle and distinctly excavated before the rectangular hind angles (so that the body is carabid-like and not compact). Furthermore, species of *Spiloscapa* are metallic or patterned dorsally, whereas *Laoscapha phoupanense* sp.nov. is unicolourously brown without metallic reflection. Species of *Spiloscapa* have reniform eyes, in contrast to round eyes without encroaching genal canthus in

Laoscapha gen.nov. Moreover, the first metatarsomere is longer than the following two combined in *Spiloscapa*, while in *Laoscapha* gen.nov., the first metatarsomere and the second metatarsomere are the same length.

Etymology. Combination of Laos, where the taxon was collected, and the suffix *-scapha* from the related genus *Spiloscapa*.

***Laoscapha phoupanense* sp.nov.** (Figs 1–3)

Type material. Holotype female: “Laos, Houa Phan Prov., Phou Pane Mt., 20°12'01–30"N 104°00'34–55"E, 1750–1850 m, 4. & 10.VI.2009, leg. Z. Kraus & D. Hauck”; NHMB.

Paratype: same data as holotype; 1 ♀ SMNS.

Description. Body length 2.8–3.0 mm. Dorsal and ventral side of body (Figs 1–2) unicolourously brown without metallic reflection, antennae and legs slightly lighter, surface shining. Ventral surface with larger and denser punctation as on pronotum, most punctures with longer adpressed setae.

Head with separate irregular punctation somewhat larger and denser than on pronotum, most punctures with erect microsetae; frontoclypeal suture impressed; clypeolabral membrane exposed; edge of clypeus straight, genae protruding and distinctly impressed; eyes in lateral view round without encroaching genal canthus, not reniform; mandibles apically bidentate; palpi with apical segment elongate oval; antennae 11-segmented, short, not extending significantly beyond base of pronotum, antennomeres gradually expanded distally, without separated club, shape of antennomeres see Figs 1–2.

Pronotum subquadrate, disc evenly convex, widest shortly behind middle, lateral margin rounded and distinctly excavated before rectangular hind angles, front angles rounded; surface with fine punctures, most punctures with erect microsetae, surface without impressions or subbasal foveae, basal margin bordered, lateral margin separated by a narrow furrow. Prosternal process not prominent.

Wings present, not reduced. Elytra elongate oval, widest in middle; each elytron with nine complete rows of punctures without striae, diminishing only shortly before apex, third row with approximately 30 punctures, punctures of the rows without microsetae, scutellary striolae indistinct; intervals flat and shining, with a few scattered fine punctures bearing erect microsetae; humeral angle prominent; lateral margin finely serrated near shoulders, visible from above for almost its entire length, epipleura with longer adpressed setation as on femora, terminating before apex.

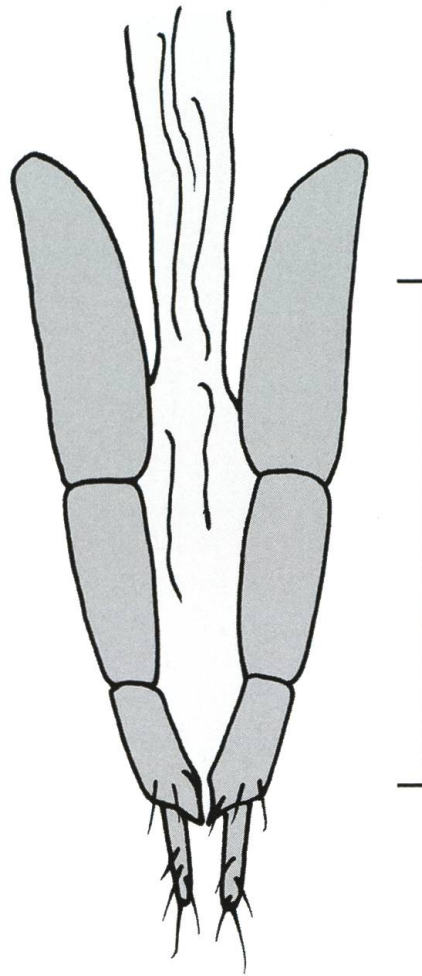


Fig. 3. *Laoscapha phoupanense* gen. et sp.nov.: 3 – ovipositor. Scale: 0.5 mm.

Tibiae round, without longitudinal keels or furrows; first metatarsomere same length as second one, remaining tarsomeres as long as preceding ones combined.

First ventrite with widely truncate intercoxal process, exposed membranes visible between ventrites 3 to 5, last ventrite without impression and unbordered. Ovipositor (Fig. 3) short, paraproct shorter than coxites combined, coxite lobes indistinct. Aedeagus unknown (only females available).

Etymology. Named after the Phou Pane mountain, where the type series was collected.

Acknowledgements

For entrusting me with the loan of these specimens, and for his always-remembered hospitality during my visits to Basel, I thank my late friend and colleague Michel Brancucci (1950–2012). Max Barclay and Michael Geiser (both London) kindly reviewed the manuscript. The photographs were taken by Johannes Reibnitz (Stuttgart) with a Leica DFC320 digital camera on a Leica MZ16 APO microscope and subsequently processed by him with Auto-Montage (Syncroscopy) software.

References

- ANDO K. & SCHAWALLER W. (2006): *Two new species of the genus Spiloscapa (Coleoptera, Tenebrionidae) from Laos and Vietnam*. Japanese Journal of systematic Entomology **12**: 127–131.
- GEISER M. & NAGEL P. (2013): *Coleopterology in Laos – an introduction to the nature of the country and its coleopterological exploration*. Entomologica Basiliensia et Collectionis Frey **34**: 11–46.
- MATTHEWS E. G. & BOUCHARD P. (2008): *Tenebrionid beetles of Australia. Descriptions of tribes, keys to genera, catalogue of species*. Australian Biological Resources Study, Canberra, 398 pp.
- SCHAWALLER W. (1997): *The genus Spiloscapa Bates (Coleoptera: Tenebrionidae), with descriptions of new species from the Oriental and Papuan regions*. Stuttgarter Beiträge zur Naturkunde (A) **566**: 1–15.
- SCHAWALLER W. (2004): *New species and records of the genus Spiloscapa Bates (Coleoptera: Tenebrionidae) from the Oriental and Papuan Regions*. Stuttgarter Beiträge zur Naturkunde (A) **661**: 1–10.
- SCHAWALLER W. (2012): *New species and records of the genus Spiloscapa Bates (Coleoptera: Tenebrionidae) from the Oriental and Papuan Regions (part 2)*. Zootaxa **3336**: 62–68.

Author's address:

Dr. Wolfgang Schawaller
Staatliches Museum für Naturkunde
Rosenstein 1
D-70191 Stuttgart
GERMANY
E-mail: wolfgang.schawaller@smns-bw.de