

Chrysomelidae collected by Dr. W. Wittmer in Turkey and Iran

Autor(en): **Medvedev, L.N.**

Objektyp: **Article**

Zeitschrift: **Mitteilungen der Entomologischen Gesellschaft Basel**

Band (Jahr): **25 (1975)**

Heft 1

PDF erstellt am: **13.09.2024**

Persistenter Link: <https://doi.org/10.5169/seals-1042464>

Nutzungsbedingungen

Die ETH-Bibliothek ist Anbieterin der digitalisierten Zeitschriften. Sie besitzt keine Urheberrechte an den Inhalten der Zeitschriften. Die Rechte liegen in der Regel bei den Herausgebern.

Die auf der Plattform e-periodica veröffentlichten Dokumente stehen für nicht-kommerzielle Zwecke in Lehre und Forschung sowie für die private Nutzung frei zur Verfügung. Einzelne Dateien oder Ausdrucke aus diesem Angebot können zusammen mit diesen Nutzungsbedingungen und den korrekten Herkunftsbezeichnungen weitergegeben werden.

Das Veröffentlichen von Bildern in Print- und Online-Publikationen ist nur mit vorheriger Genehmigung der Rechteinhaber erlaubt. Die systematische Speicherung von Teilen des elektronischen Angebots auf anderen Servern bedarf ebenfalls des schriftlichen Einverständnisses der Rechteinhaber.

Haftungsausschluss

Alle Angaben erfolgen ohne Gewähr für Vollständigkeit oder Richtigkeit. Es wird keine Haftung übernommen für Schäden durch die Verwendung von Informationen aus diesem Online-Angebot oder durch das Fehlen von Informationen. Dies gilt auch für Inhalte Dritter, die über dieses Angebot zugänglich sind.

Nomenclatur

Tagfalter nach HIGGINS/RILEY, Die Tagfalter Europas und Nordwestafrikas

Spinner und Schwärmer sowie Eulen nach FORSTER/WOHLFAHRT, Die Schmetterlinge Mitteleuropas

Spanner nach A. SEITZ, Die Gross-Schmetterlinge der Erde, Band IV, Supplement

Adresse des Verfassers:

Eugen Pleisch
Schwandenacker 48
8052 Z ü r i c h

CHRYSOMELIDAE COLLECTED BY DR. W. WITTMER IN TURKEY AND IRAN

L.N. Medvedev

Zusammenfassung

Während den Sammelreisen in der Türkei und Iran 1969 und 1970, teils in Begleitung von U. von BOTHMER, fand Dr. W. WITTMER 178 Arten Chrysomelidae, von denen 48 Arten zum ersten Mal in diesen beiden Ländern gefunden wurden. Es wird eine Liste dieser 48 Arten geben, die 1 neue Gattung, 4 neue Arten und 2 neue Unterarten enthält, die gleichzeitig beschrieben werden.

Through the kindness of Dr. W. WITTMER (Basel Museum) I had the opportunity to study a very interesting collection of Chrysomelidae from Turkey and Iran, collected partly by him and partly by Mr. von BOTHMER in the years 1969-1970. This material includes 123 species from Turkey and 45 species from Iran; of which 1 genus, 4 species and 2 subspecies are new for science. From the total of 178 species found 48 are cited for the first time for the two countries. These species are hereafter enumerated: The holotypes and paratypes of the new forms are deposited in the Basel Museum of Natural History, the duplicate paratypes are in the authors' collection.

A. TURKEY

1.) Zeugophora subspinosa F.

Forest of Belgrad (Istanbul), 25.V.1969. New for Turkey.

2.) Smaragdina viridana Lac.

Gaziantep - Marash, 16.V.1969. New for Turkey.

- 3.) Smaragdina persica Pic
Marash - Gölbasi, 18.V.1969. This very rare species was described from Iran without more exact indications. In 1904 the species was collected by ZARUDNY in Luristan (Village Dehdiz , 300 km SO Suleyman).
- 4.) Cryptocephalus imperialis Laich.
Amasya, 420-900 m, 24.-26.V.1970. New for Turkey.
- 5.) Cryptocephalus rugicollis Ol.
Efes, 23.-24.IV.1969. 29 km S Aydin, 27.IV.1969. New for Turkey. Was known from Spain, France, Italy, Sicily, Sardinia and North Africa (Marocco, Algeria, Lybia).
- 6.) Cryptocephalus parvulus Müll.
Uludag, 800-1750 m. 29.V.1970. New for Turkey.
- 7.) Cryptocephalus octacosmus Bed.
Izmit - Jaloma, 28.V.1970. This very common european species is new for Turkey.
- 8.) Cryptocephalus fulvus Gze.
Efes, 23.-24.IV.1969. Antalya, 2.V.1969. Alanya, 7.V.1969. Ovacik - Silifke, 10.V.1969. New for Turkey.
- 9.) Pachybrachis haliziensis Mill.
Soguksu - Kizilcahamam, 26.V.1970. New for Turkey.
- 10.) Pachnephorus cylindricus Luc.
Adana, 13.V.1969. New for Turkey.
- 11.) Chrysolina (Ovosoma) wittmeri, sp.nov.
Coloration bronze, antennae dark brown, the basal joints reddish brown. Body elongate ovate, slightly widened posteriorly.
Frons sparsely and finely punctured, densely chagreened; clypeus with larger punctures. Prothorax convex with sides rounded, lateral callus feebly convex, delimited in the basal third with a deep groove, anteriorly with large punctures. Surface of prothorax with fine, rather dense punctures, interspaces densely chagreened. Each elytra (fig. 1) with 9 regular rows of punctures, disrupted at the apical slope, punctures in a row comparatively small, densely placed (about 40 punctures in each row); interspaces between rows wide, flat or slightly convex, extremely fine and sparsely punctured and densely chagreened. Wings absent. All tarsi pubescent throughout on underside in both sexes.
Male. Tarsi of all legs widened. The last sternite even, with triangular impression at apex. Aedeagus - fig. 2-4 Length of body 6,1-6,5mm.
Female. The last sternite with larger and denser punctures as compared with preceding ones, triangular impression distinct, but more shallow as in male. Length of body 6,9 mm.
This interesting species has a general appearance of the subgenus Pleurosticha and similar to Ch.(P.) septentrionalis Men., but the

structure of the aedeagus is typical for the subgenus Ovosoma. It differs well from all known species of Ovosoma in a quite different sculpture of the elytra (well developed equidistant rows with small numerous punctures) and in the form of the aedeagus.

Zigana Dag, 2000 m, 22.V.1970, 4 males and 1 female. Holotype - male. The species is dedicated to Dr. W. WITTMER.

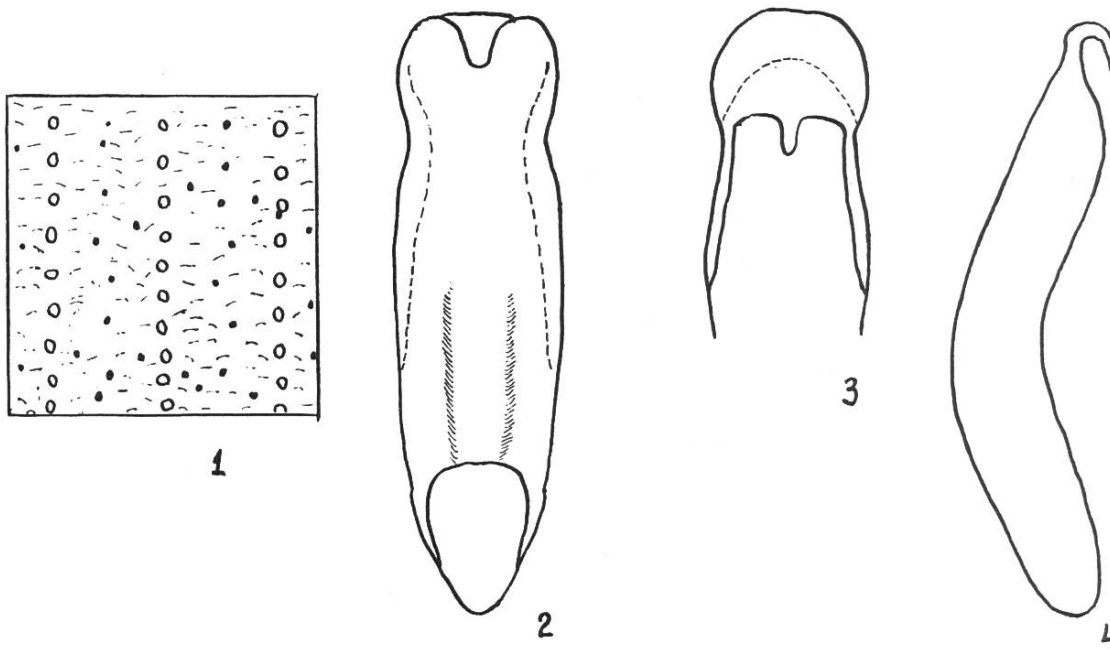


Fig. 1 - 4

Fig. 1-4 Chrysolina wittmeri sp.n.

1 punctures of elytra

2-4 aedeagus, ventral, dorsal and lateral view

12.) Plagioderma versicolora Laich.

Izmit - Jaloma, 28.V.1970. New for Turkey.

13.) Chrysomela tremulae F.

Maden, 1700 m, 21.V.1970. New for Turkey.

14.) Prasocuris junci Brahm.

Marmaris, 26.IV.1969. New for Turkey.

15.) Exosoma collare flavipes Heyd.

Amasya, 420-900 m, 24.-26.V.1970. New for Turkey. Was known from the Caucasus.

16.) Agelastica alni L.

Osmaniye, 13.V.1969. New for Turkey.

17.) Luperus turcicus, sp.nov.

Greenish blue, antennae and legs pitchy brown or black, antennal joints 1-4 and knees of fore legs dirty yellow.

Body elongate. Head not punctured, interantennal carina flat, triangular, with a few punctures. The third joint of antenna twice as long as the second. Prothorax slightly rounded on sides, with maximal width on the anterior one third, 1,4 times as broad as long; surface shining, finely punctured. Elythra shining, with rather coarse and deep punctures and sparse short hairs before apex. Claws with large sharp tooth. Length of body 4-4,6 mm.

Tahir, 2300-2400 m, 20.V.1970, 5 females, including holotype.

This metallic blue species resembles only L. orientalis Fald. but differs from it well in having dark legs and more dark antennae, not chagreened vertex and not so dense punctures on the prothorax.

Wittmeriana, gen. nov.

Body elongate, upperside flattened. Frontal tubercles very feeble, not delimited exteriorly and behind; interantennal carina broad, triangular (fig. 5). Vertex with sparse erect hairs. Prothorax subquad-rangular, transverse, without impressions or grooves, not angulated on sides before anterior angles, with thin erect hairs along all margins (fig. 6).

Elytra regularly punctured (rows more or less confused near side margins and on the apical slope), feebly impressed behind base, with short sparse erect white hairs. Anterior coxal cavities open. Hind tibia with a spur, the first joint of hind tarsus as long as half of the corresponding tibia.

This genus must be placed near Longitarsus, but differs well from it in having a hairy upperside and 10 rows of punctures on elytra.

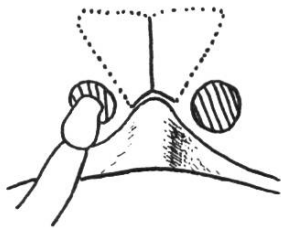


Fig. 5

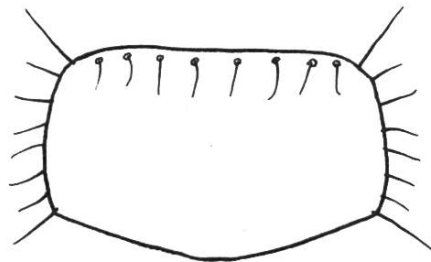


Fig. 6

Fig. 5-6 Wittmeriana turcica gen. et sp.n.

- 5 frontal tubercles and interantennal carina
- 6 prothorax

18.) Wittmeriana turcica, sp.nov.

Black; 5 or 6 basal joints of antennae and legs yellow, the apices of hind femora more or less darkened.

Head sparsely punctured and **finely transversely** wrinkled on vertex. Antennae a little shorter than the body, all joints elongate, the second joint longer than the third, but shorter than the fourth. Surface of prothorax with large shallow punctures and wrinkled interspaces, 1,3 times as broad as long. The elytrae are flattened on the back, with almost vertical lateral slopes, including two rows of punctures; punctures in rows deep, interspaces densely wrinkled. Hind tibia finely denticulate on outer margin, its spur as long as the width of the first tarsus at the top. Length of body 1,75-2 mm.

Antalya, 2.V.1969 - holotype and 5 paratypes.

19.) Mantura chrysanthemii Koch.

19. km N Yatagan, 24.IV.1969. Marmaris, 26.IV.1969. New for Turkey.

20.) Psylliodes pyritosa Kusch.

Tekir, 20.-21.V.1969. Osmaniye - Gaziantep, 15.V.1969. New for Turkey.

21.) Psylliodes marcida Ill.

Denizli -Yaloma, 29.IV.1969. New for Turkey.

22.) Cassida inquinata Brul.

Gonen - Biga, 30.V.1970. First record for Turkey.

B. NORTH - WEST IRAN

1.) Chilotoma erythrostoma Fald.

Gachsar - Marzanabad, 550 m, 28.IV.1970. New for Iran.

2.) Smaragdina viridis comans Jacobs.

Abgarm (Demavend), 2100-2400 m, 15.V.1970. New for Iran.

3.) Smaragdina aurita auritoides Ach. (stat.nov.).

Gole Lovae, 750-1400 m, 3.V.1970. Assalam - Hero-abad, 1800-2350 m, 11.V.1970. New for Iran.

4.) Cryptocephalus concolor Sffr.

Gachsar - Marzanbad, 550 m, 28.IV.1970. New for Iran.

5.) Cryptocephalus coerulescens Sahlb.

Gachsar - Marzanabad, 550 m, 28.IV.1970. Chalus, 29.IV.1970. Gorgan, 220-800 m, 1.V.1970. Shasavar, 6.V.1970. New for Iran.

6.) Cryptopcephalus ocellatus Drap.

Ramsar, 7.V.1970, New for Iran.

7.) Cryptocephalus macellus iranicus L. Medvedev, ssp. n.

Quite identical with the typical form in the structure of the aedeagus, but differs in having well developed dark patterns on the head and upper side (fig. 7). Prothorax dark brown with yellow anterior and lateral margins and sometimes indistinct median line. Elytra with wide longitudinal stripe, connected posteriorly with suture and lateral margin. Head yellow with black occiput, longitudinal stripe and 2 spots above antennal bases. Scutellum black or with dirty yellow spot in the middle, underside black, legs yellow with white spots on apices of femora. Length of male 2,2-2,3 mm, female 2,4 mm.

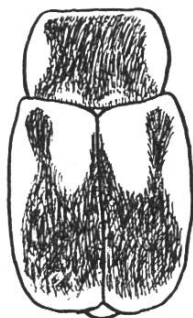


Fig. 7

The coloration of elytra of this form is rather similar to ab. pseudoconnexus Müll. from Italy, but distinctly darker.

Gachsar - Marzanabad, 1700-2800 m, 28.IV.1970, leg. W. WITTMER and v. BOTHMER, 2 males (holotype and paratype) and 1 female (paratype).

Fig. 7 Cryptocephalus macellus iranicus ssp. n.
pattern of upperside

8.) Chrysolina armeniaca iranica L. Medvedev, ssp. n.

Differs from the typical form in having bronze green upperside, feebly developed lateral callus of the prothorax; punctuation of the elytra, not rugose and very faint, almost indistinct with unarmed eyes. Length of body 9,7-10,8 mm. Aedeagus as in typical form.

Gachsar - Marzanabad, 550 m, 28.IV.1970, leg. W. WITTMER and v. BOTHMER, holotype and 5 paratypes.

9.) Chrysolina chalcites Germ.

Chalus, 28.-29.IV.1970. New for Iran.

10.) Chrysolina vernalis ottomana Wse.

Alamdeh, 30.IV.1970. New for Iran.

11.) Chrysolina sahlbergi Men.

Assalam - Hero - abad, 1800-2350 m, 11.V.1970. Randjan - Miyand, 1300, 18.V.1970. New for Iran.

12.) Pyrrhalta lineola F.

Gorgan, 200-600 m, 1.V.1970. Gole Lovae, 750-1400 m, 3.V.1970. Assalam, 1300 m, 10.V.1970. Assalam - Hero - abad, 1800-2350 m, 11.V.1970. New for Iran.

13.) Lochmaea crataegi Forst.

Gole Lovae, 750-1400, 3.V.1970. New for Iran.

14.) Luperus orientalis Fald.

Gachsar - Marzanabad, 1700-2500 m, 28.IV.1970. Dasht - nazir, 30.IV.1970. New for Iran. The species was known from Turkey, Caucasus and South-West Turkomania.

15.) Luperus (Calomicrus) pseudoaltaicus L. Medvedev, sp.n.

Upperside metallic blue, underside black, antennae and legs pitchy or dark brown, basal joints of antennae, knees of all legs, fore tibiae and tarsi dirty yellow.



Fig. 8

Vertex sparsely punctured, interantennal carina rather strongly convex, postantennal tubercles distinct. Antennae $2/3$ as long as body, the third joint barely longer than the second, the fourth is 1,6 times longer than the third, joints 4-10 subequal in length, the eleventh longest. Prothorax $2/3$ longer than broad, lateral margin moderately arcuate, surface without impressions, with fine, moderately dense and unequal punctures. Elytra slightly depressed at basal quarter, surface rather closely impressed with fine punctures; interspaces shining. Last abdominal sternite of male with well developed subcircular central impression. The first joint of anterior tarsus of male not enlarged. Hind tibiae simple. Claws with large tooth. Aedeagus - fig. 8. Length of body 4,5-5,6 mm.

Similar to L. altaicus Mnnh., differs in having shining elytrae, fore tarsi and hind tibiae simple, aedeagus of different form.

Alamdeh, 30.IV.1970, 500-900 m, holotype (male) and 2 paratypes; Shasavar, 6.V.1970, 12 paratypes.

Fig. 8 Luperus pseudoaltaicus sp.n., aedeagus

16.) Batophila fallax Wse.

Alamdeh, 500-900 m, 30.IV.1970. Gole Lovae, 750-1400 m, 3.V.1970. Assalam, 1300 m, 9.V.1970. New for Iran.

17.) Aphthona ? cyanella Redt.

Polour - Abali, 2100-2600 m, 17.V.1970. It is possible that the specimen may be A. pygmaea Kutsch., but the only female has fulvous hind femora, that is rather typical for A. cyanella Redt.

18.) Phyllotreta ochripes Curt.

Gole Lovae, 750-1400 m, 3.V.1970. New for Iran.

19.) Phyllotreta erysimi Wse.

Polour - Abali, 2100-2600 m, 17.V.1970. New for Iran.

20.) Phyllotreta nigripes F.

Polour - Abali, 2100-2600 m, 17.V.1970. New for Iran.

21.) Longitarsus lycopi Fdr.

Gole Lovae, 750-1400 m, 3.V.1970. New for Iran.

22.) Longitarsus nigrofasciatus Goeze.

Polour - Abali, 2100-2600 m, 17.V.1970. New for Iran.

23.) Psylliodes cyanoptera Ill.

Gole Lovae, 750-1400 m, 3.V.1970. Assalam - Hero - abad, 1800-2350 m, 11.V.1970. New for Iran.

24.) Psylliodes chrysocephala L.

Zandjan - Miyaneh, 18.V.1970. New for Iran.

25.) Psylliodes chalcomera Ill.

Gachsar - Marzanabad, 560 m, 29.IV.1970. New for Iran.

26.) Hispella atra L.

Polour - Abali, 2100-2600 m, 17.V.1970. New for Iran.

Authors address :

Dr. L.N. Medvedev
Soviet-Mongolian Biological Expedition
Bolshaya Ordynka 21/16
MOSCOW I-35 / UdSSR