

Zeitschrift: Helvetia : magazine of the Swiss Society of New Zealand
Band: 62 (1996)
Heft: [6]

Artikel: "Rütli Wiese" in danger
Autor: [s.n.]
DOI: <https://doi.org/10.5169/seals-944902>

Nutzungsbedingungen

Die ETH-Bibliothek ist die Anbieterin der digitalisierten Zeitschriften. Sie besitzt keine Urheberrechte an den Zeitschriften und ist nicht verantwortlich für deren Inhalte. Die Rechte liegen in der Regel bei den Herausgebern beziehungsweise den externen Rechteinhabern. [Siehe Rechtliche Hinweise.](#)

Conditions d'utilisation

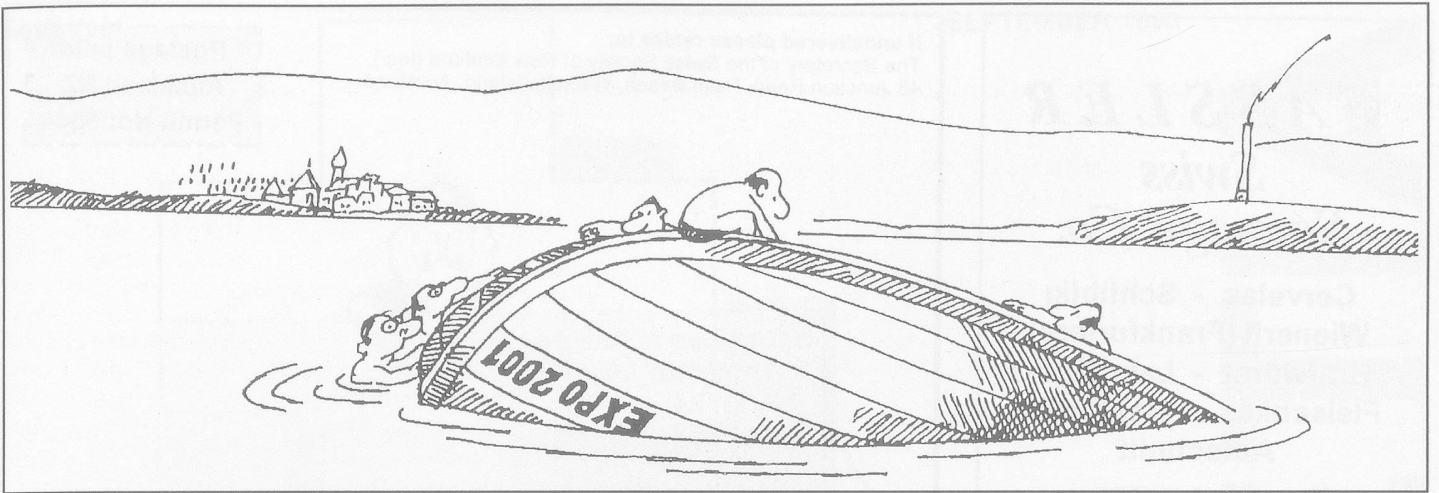
L'ETH Library est le fournisseur des revues numérisées. Elle ne détient aucun droit d'auteur sur les revues et n'est pas responsable de leur contenu. En règle générale, les droits sont détenus par les éditeurs ou les détenteurs de droits externes. [Voir Informations légales.](#)

Terms of use

The ETH Library is the provider of the digitised journals. It does not own any copyrights to the journals and is not responsible for their content. The rights usually lie with the publishers or the external rights holders. [See Legal notice.](#)

Download PDF: 19.11.2024

ETH-Bibliothek Zürich, E-Periodica, <https://www.e-periodica.ch>



SWISS EXPO 2001

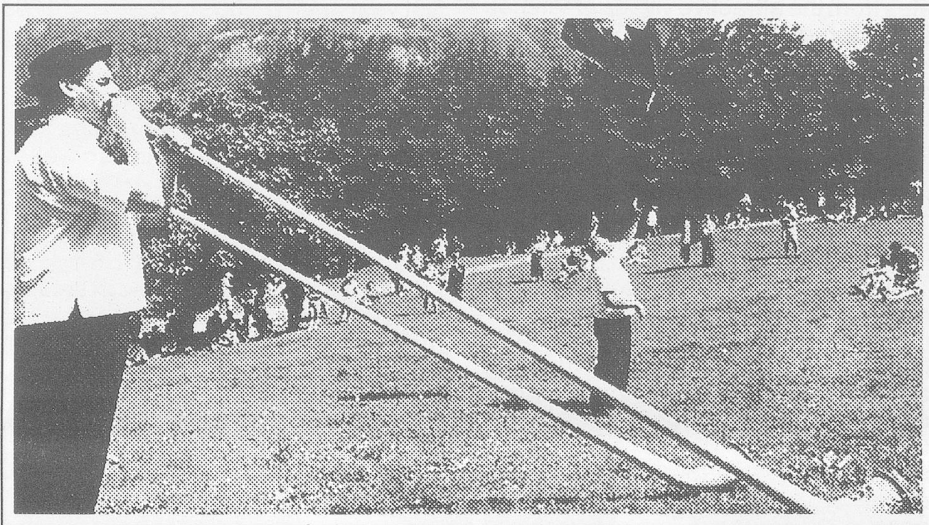
The next "Landi" or Swiss Expo to take place in the year 2001 will involve 5 cantons (Neuenburg, Bern, Waadt, Fribourg and Jura), 4 cities (Neuenburg, Biel, Yverdon and Murten) and three lakes (Neuenburg, Biel and Murten).

It will cost 1.4 billion SFR and is expected to attract 6 million spectators.

However, to stage such a huge exhibition spread over so many areas, cities and lakes is a real headache for the organisers. As was to be expected, solid arguments have already come up between the cantons and cities involved as everyone tries to attract the lion's share of the exhibits. No doubt, the wily Swiss will eventually find a compromise and the Swiss Expo 2001 will certainly be a huge success. But in the meantime, the bickering goes on in true Swiss fashion.

No surprise therefore that cartoonists did grab the chance for a good joke at the expense of the organisers.

"RÜTLI WIESE" IN DANGER



The Rütli, Switzerland's "holy" place

The "Rütli Wiese", the cradle of Switzerland, is in danger of becoming a field of rubble as more and more stones and rocks are falling down on it from the mountain above. With the ever increasing number of tourists visiting the site where Switzerland was created in 1291, the authorities became quite concerned that one day someone could get seriously injured or killed by a falling rock.

So a plan has been put together, not only to save the "Rütli Wiese", but to improve also its facilities to cater for the increasing number of visitors.

A huge steel net will be placed in the forest above the Rütli, invisible from below, to catch any falling rocks. Toilet

facilities will be improved to stop the ever lengthening queues in front of them and stopping desperate visitors from dashing into the forest to relieve themselves. The Rütli will also receive its own sewerage treatment plant to protect the lake below and a larger restaurant will be built to cater for the hungry tourists.

Every good Swiss will agree, the cradle of Switzerland must be protected at all costs and the 2.5 million SFR to be allocated for this purpose will certainly be well spent.

BREAD AS IN THE PAST

Baking bread in the old fashioned way has just come alive again in the Wallis. In Blatten, high up in the Lötschental, the old baking oven which

Let us consult the construction plans once more very carefully before we invite 6 million guests.

CLASSIFIED ADVERTISEMENTS

THIS MONTH'S SPECIAL

Venison Salamis, Venison Sausages. Contact Appenzell Deer Farm
Ph. 09 524-8899, Auckland.

"YOUR" SWISS TIME SERVICE CENTRE

We restore and repair all top Brands Antique and Modern Watches and Clocks. We also pay you cash for your unwanted time pieces.

Swiss Time Service Centre P.O. Box 3751
Auckland, Fax and Phone 09/ 832-3518
10% discount for Swiss Club members.

FOR SALE

Fitted single Bedsheets, towel-stretch from Switzerland.

Warm, soft and comfortable. Colours: white, pink, light blue, purple.

Ueli and Ruth Baumberger. Phone/fax 07 829 5886.

had been left idle for more than 40 years has been put back into operation in the presence of no less a person than Prince Saddrudin Aga Khan, President of Alp Action, an organisation devoted to save the Alps and to re-settle people in remote villages by providing them with work which had disappeared over the years.

DOG OR WOLF?

Farmers in the Val Ferret and the Val d'Entremont (Wallis) are in turmoil. High up in the Alps an unknown beast is killing and mutilating their sheep.

Sometimes the beast kills the sheep outright, but on other occasions, it immobilises them and eats away their flanks. So far over 63 sheep have been either killed or had to be destroyed. Everyone wonders whether the beast is a wild dog or a wolf.