

Precision in a listed building

Autor(en): **Rodecke, Sebastian**

Objektyp: **Article**

Zeitschrift: **Hochparterre : Zeitschrift für Architektur und Design**

Band (Jahr): **22 (2009)**

Heft [4]: **The essence of architecture : Röthlisberger: swiss quality
woodwork**

PDF erstellt am: **26.06.2024**

Persistenter Link: <https://doi.org/10.5169/seals-123778>

Nutzungsbedingungen

Die ETH-Bibliothek ist Anbieterin der digitalisierten Zeitschriften. Sie besitzt keine Urheberrechte an den Inhalten der Zeitschriften. Die Rechte liegen in der Regel bei den Herausgebern.

Die auf der Plattform e-periodica veröffentlichten Dokumente stehen für nicht-kommerzielle Zwecke in Lehre und Forschung sowie für die private Nutzung frei zur Verfügung. Einzelne Dateien oder Ausdrucke aus diesem Angebot können zusammen mit diesen Nutzungsbedingungen und den korrekten Herkunftsbezeichnungen weitergegeben werden.

Das Veröffentlichen von Bildern in Print- und Online-Publikationen ist nur mit vorheriger Genehmigung der Rechteinhaber erlaubt. Die systematische Speicherung von Teilen des elektronischen Angebots auf anderen Servern bedarf ebenfalls des schriftlichen Einverständnisses der Rechteinhaber.

Haftungsausschluss

Alle Angaben erfolgen ohne Gewähr für Vollständigkeit oder Richtigkeit. Es wird keine Haftung übernommen für Schäden durch die Verwendung von Informationen aus diesem Online-Angebot oder durch das Fehlen von Informationen. Dies gilt auch für Inhalte Dritter, die über dieses Angebot zugänglich sind.

22/23 // INTERIOR DESIGN PRECISION IN A LISTED BUILDING

The mansion, situated on Potsdamer Platz, was built by wine merchant Christian Huth in 1913 in the heart of the then vibrant German capital. Until 1989, it was the only intact building on the urban wasteland next to the Berlin wall. In the early 90s, the Berlin Senate decided to allow the Daimler-Benz Group to purchase the southern part of the square and to build. Renzo Piano and other renowned architects were commissioned to build the new quarter. The Huth mansion was integrated in the entire building project to be used by the automotive company for representative purposes.

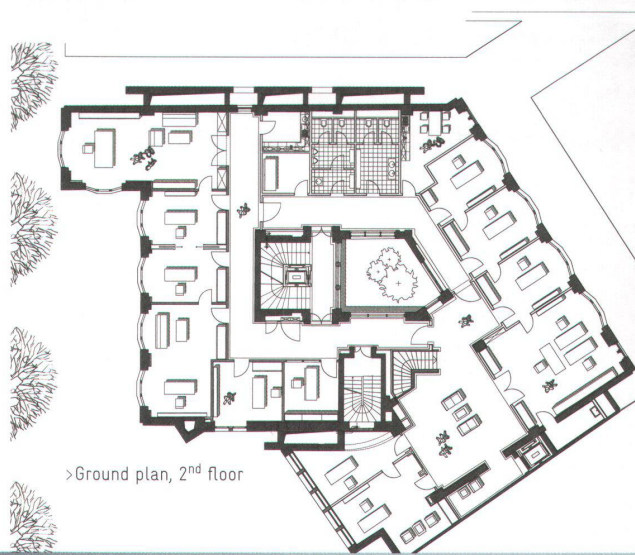
First, the mansion was completely gutted and re-built. The only part left unaltered was the old staircase. The Berlin-based architects, Christine Kreplin-Duwensee and Hubertus Duwensee, were responsible for the interior design of the top floors, and they worked closely with Röthlisberger. Even after eleven years, the fitted teak components exude elegance and are an integral part of the building. The most voluminous addition is a staircase with wall panelling, located in one of the corners and connecting the club and lounge with the offices above. The high wreathed string is enhanced by an elegant, high-precision hand-rail. Unobtrusive shapes have been integrated into the rooms in a most natural way, and yet they serve a purpose. Sliding elements or doors reveal wardrobes, media walls, ventilation systems or bars. The carefully chosen veneer grain enhances the entire structure: the linear grain does not reveal the slightest trace of a fault. High-class design is found all over the mansion. Even closets and doors have been made with greatest care.

Christine Kreplin fondly remembers the reconstruction assignment. She says that her high expectations in terms of design and demand were shared by Peter Röthlisberger. During the production, she spent several weeks in Gümligen to discuss the assembly down to the last joint. Prior to the assembly, all the work was executed by just one company. Without this intensive co-operation the high demands set by the client and the people involved could not have been met.

Author: Sebastian Redecke, photos: Stefan Müller

HUTH MANSION, BERLIN 1997

- >Address: Potsdamer Platz, Berlin
- >Client: Daimler-Benz, Berlin
- >Architecture: Christine Kreplin-Duwensee and Hubertus Duwensee, Berlin
- >Interior design: Co-operation between Röthlisberger Schreinerei, Gümligen, and Glaeser, Baden
- >Interior fit out procedure: Invited competition



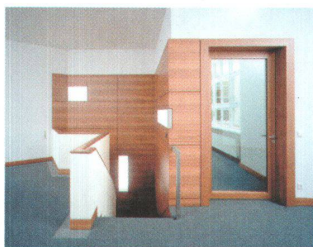
>Ground plan, 2nd floor



^ Matching doors and paper bins.



^ The carefully selected veneer grain adds quality to the entire structure.



^ The fitted teak components are an integral part of the historical house.

> Staircase connecting the club and lounge with the offices above.

