

# Tafeln

Autor(en): **[s.n.]**

Objektyp: **Appendix**

Zeitschrift: **Schweizerische numismatische Rundschau = Revue suisse de numismatique = Rivista svizzera di numismatica**

Band (Jahr): **48 (1969)**

PDF erstellt am: **22.07.2024**

## **Nutzungsbedingungen**

Die ETH-Bibliothek ist Anbieterin der digitalisierten Zeitschriften. Sie besitzt keine Urheberrechte an den Inhalten der Zeitschriften. Die Rechte liegen in der Regel bei den Herausgebern.

Die auf der Plattform e-periodica veröffentlichten Dokumente stehen für nicht-kommerzielle Zwecke in Lehre und Forschung sowie für die private Nutzung frei zur Verfügung. Einzelne Dateien oder Ausdrucke aus diesem Angebot können zusammen mit diesen Nutzungsbedingungen und den korrekten Herkunftsbezeichnungen weitergegeben werden.

Das Veröffentlichen von Bildern in Print- und Online-Publikationen ist nur mit vorheriger Genehmigung der Rechteinhaber erlaubt. Die systematische Speicherung von Teilen des elektronischen Angebots auf anderen Servern bedarf ebenfalls des schriftlichen Einverständnisses der Rechteinhaber.

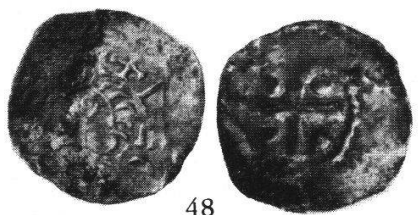
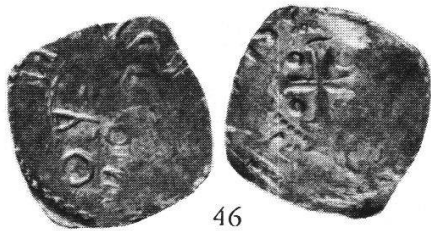
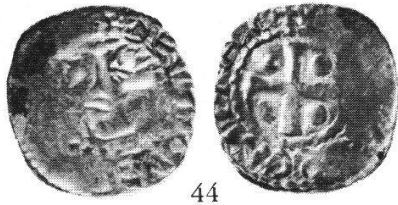
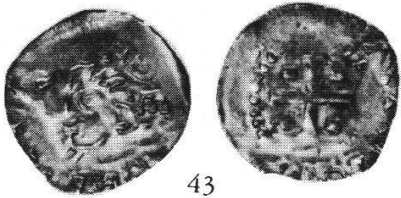
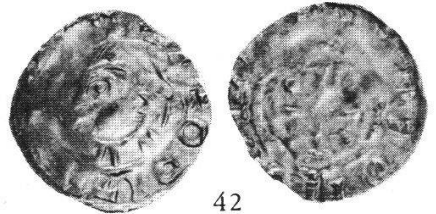
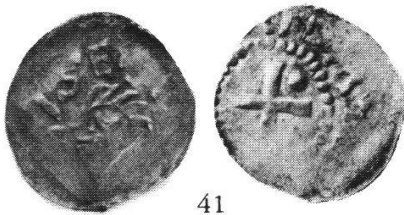
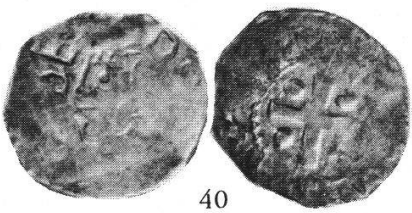
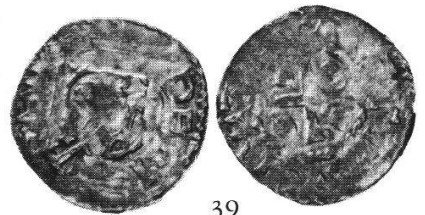
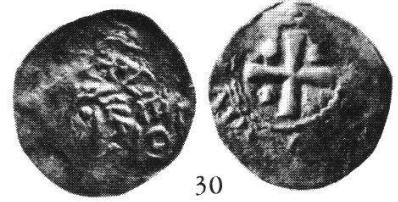
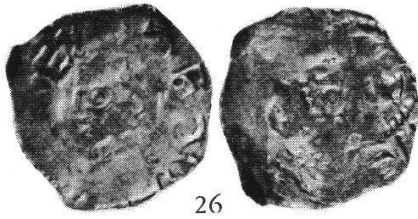
## **Haftungsausschluss**

Alle Angaben erfolgen ohne Gewähr für Vollständigkeit oder Richtigkeit. Es wird keine Haftung übernommen für Schäden durch die Verwendung von Informationen aus diesem Online-Angebot oder durch das Fehlen von Informationen. Dies gilt auch für Inhalte Dritter, die über dieses Angebot zugänglich sind.

TAFEL I



TAFEL 2







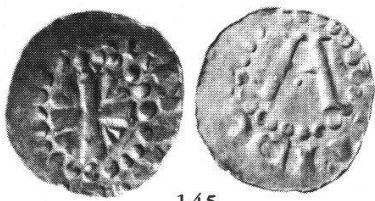
TAFEL 5



97-114 Metz 115 Marsal 116 Toul 117, 118 Verdun 119, 120 Trier



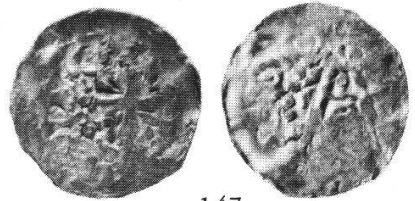
TAFEL 7



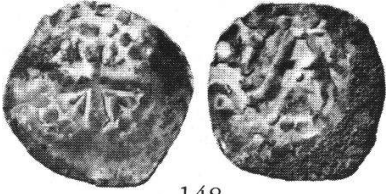
145



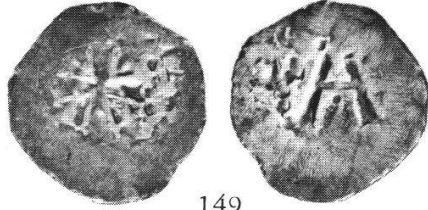
146



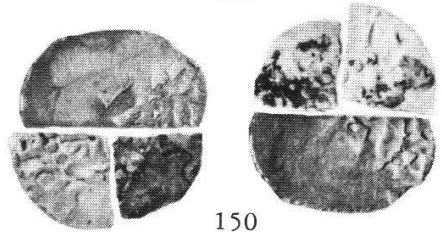
147



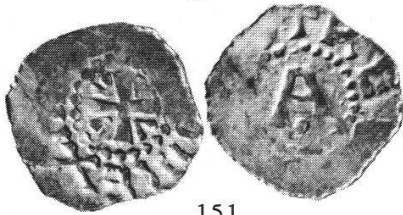
148



149



150



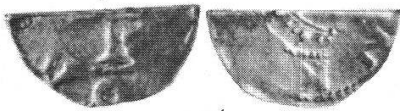
151



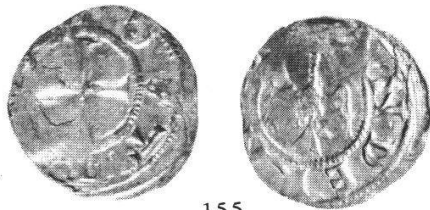
152



153



154



155



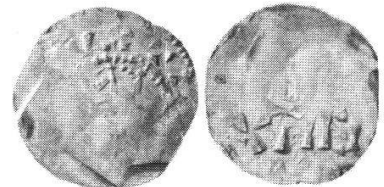
156



157



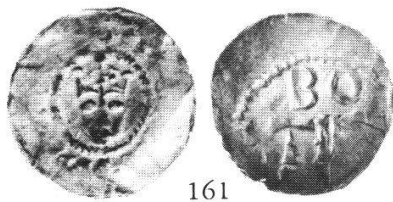
158



159



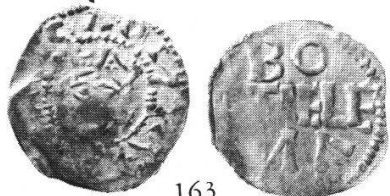
160



161



162



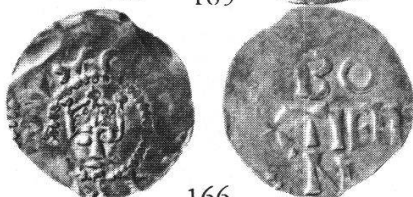
163



164



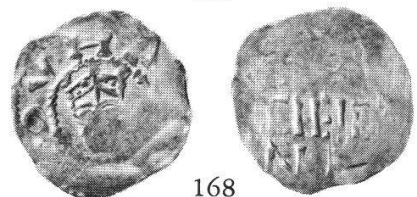
165



166



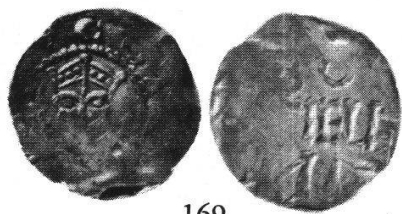
167



168



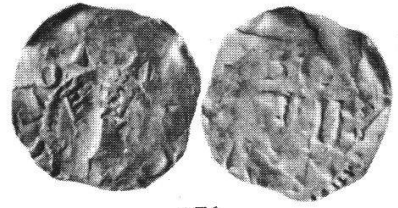
TAFEL 8



169



170



171



172



173



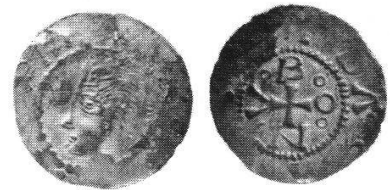
174



175



176



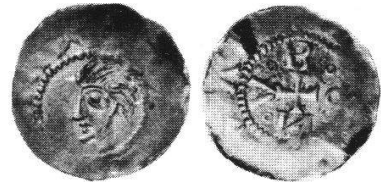
177



178



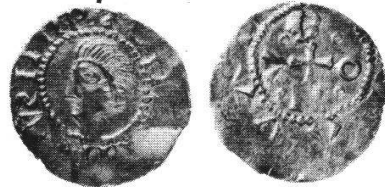
179



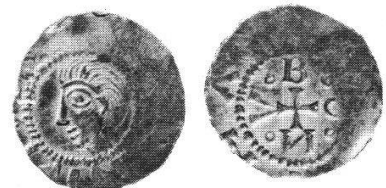
180



181



182



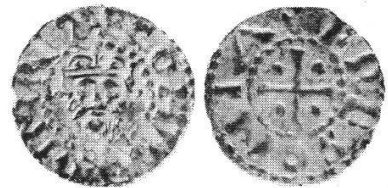
183



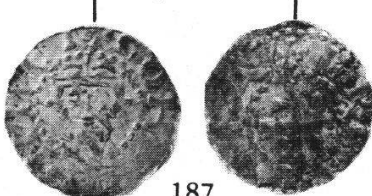
184



185



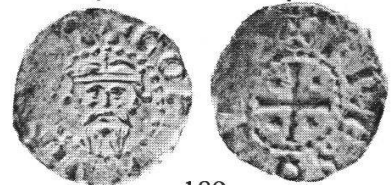
186



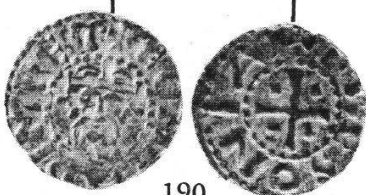
187



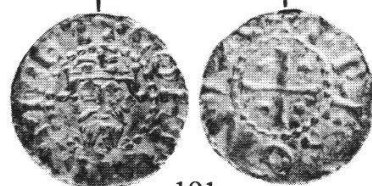
188



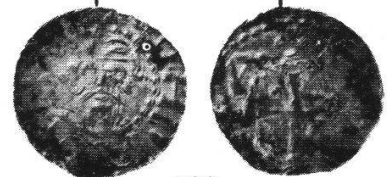
189



190



191



192

169-174 Tiel 175-185 Deventer 186-192 Friesland



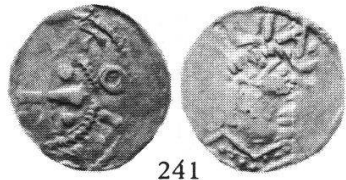
193-199 Friesland 200-216 Köln

TAFEL 10

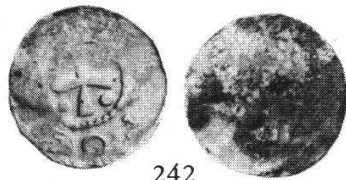


217-222 Köln 223 Duisburg 224-230 Soest 231 Lüneburg 232 Hildesheim  
 233 Merseburg 234 Fritzlar 235 Unbestimmt 236-240 Würzburg

TAFEL II



241



242



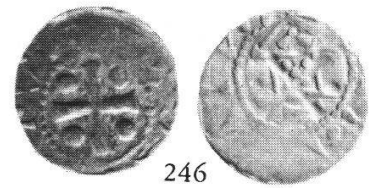
243



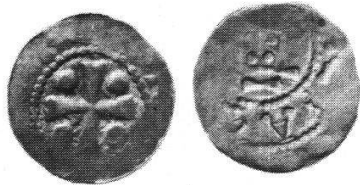
244



245



246



247



248



249



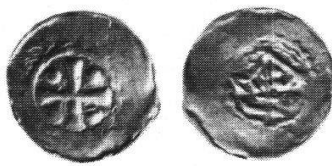
250



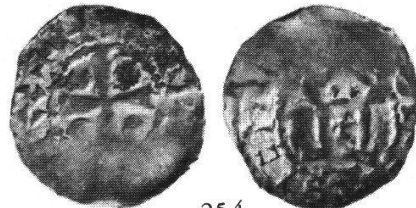
251



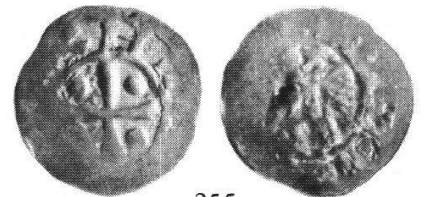
252



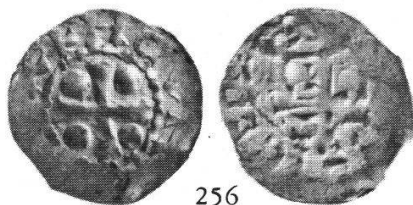
253



254



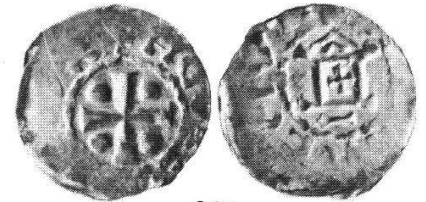
255



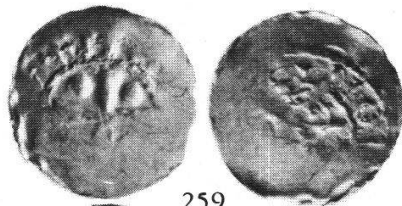
256



257



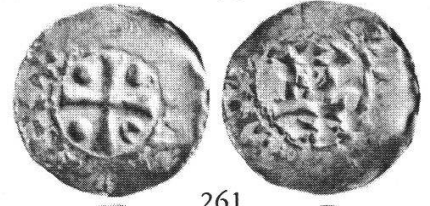
258



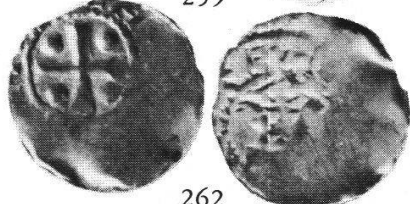
259



260



261



262



263



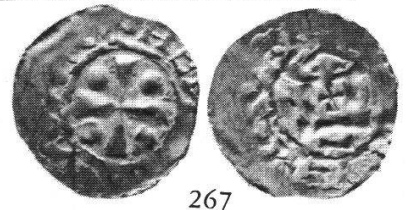
264



265



266



267

241-244 Würzburg 245-267 Mainz

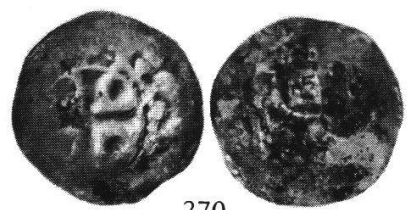
TAFEL 12



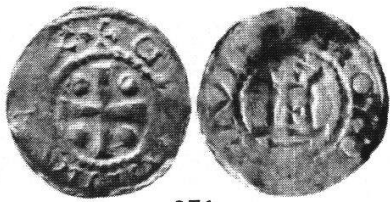
268



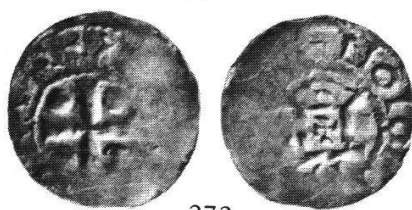
269



270



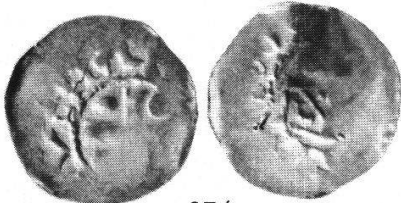
271



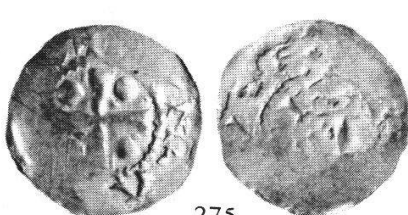
272



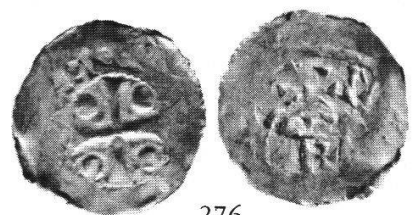
273



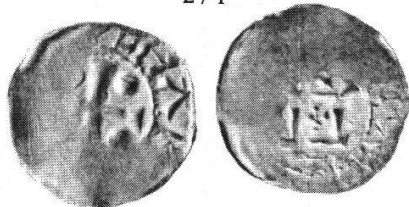
274



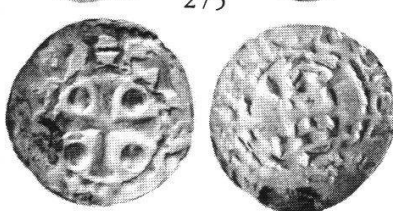
275



276



277



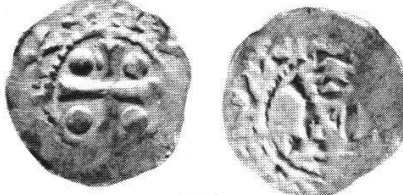
278



279



280



281



282



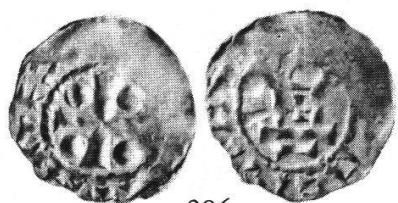
283



284



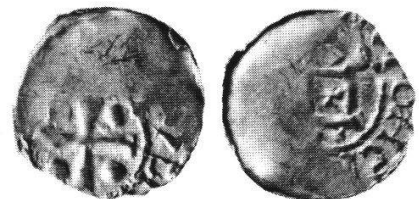
285



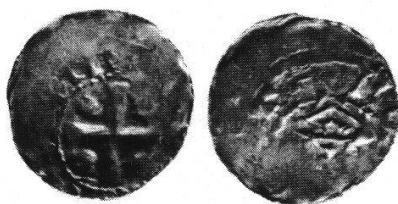
286



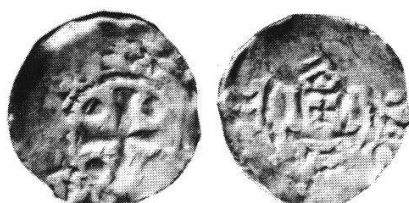
287



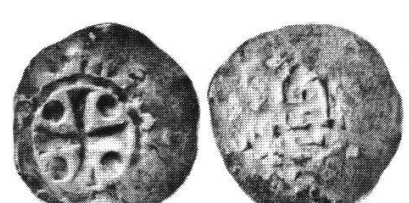
288



289



290



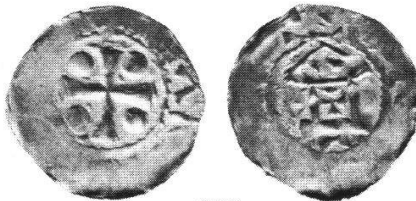
291

Mainz

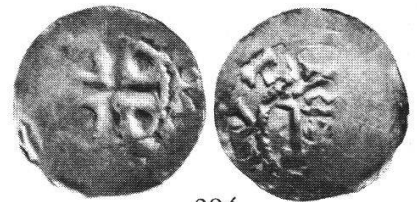
TAFEL 13



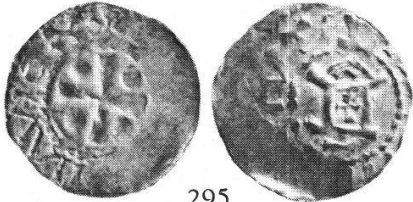
292



293



294



295



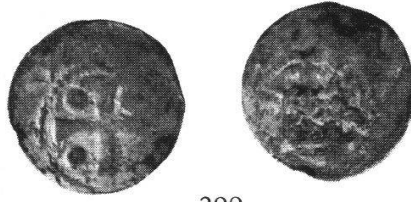
296



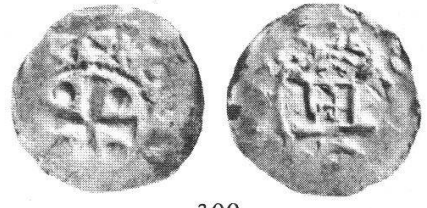
297



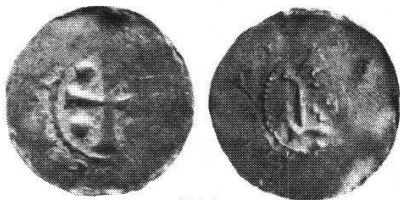
298



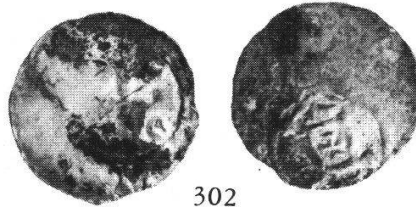
299



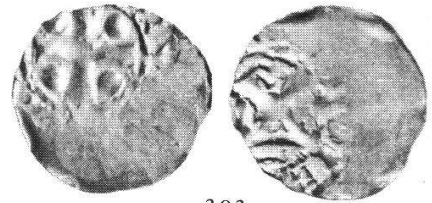
300



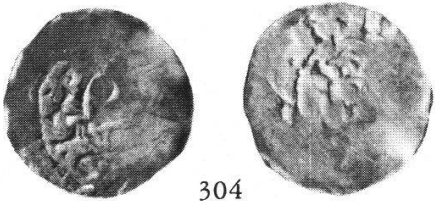
301



302



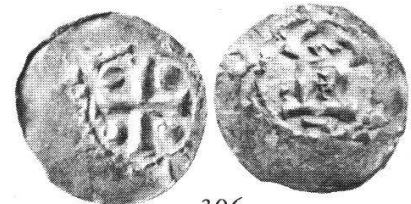
303



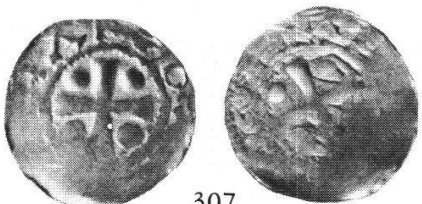
304



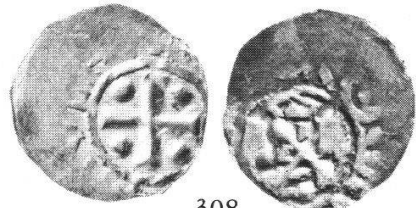
305



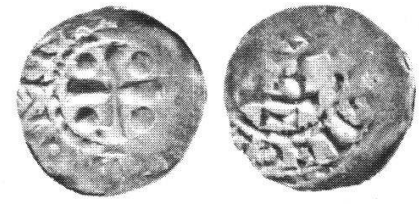
306



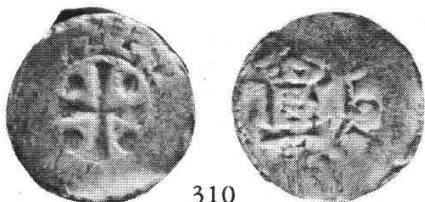
307



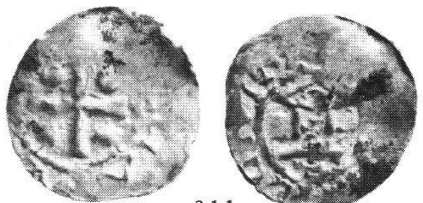
308



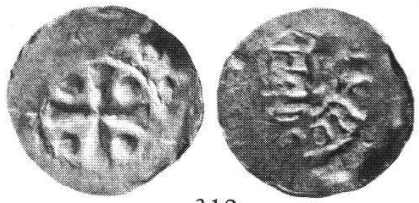
309



310



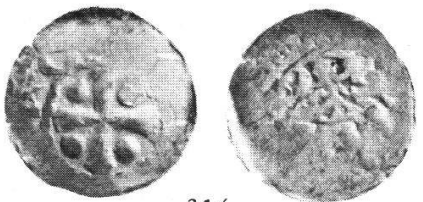
311



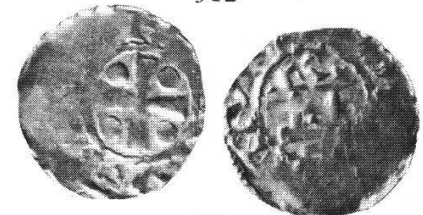
312



313

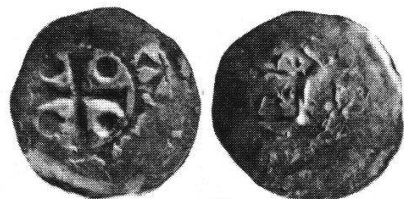


314

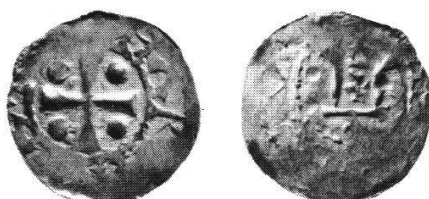


315

TAFEL 14



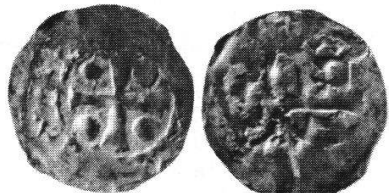
316



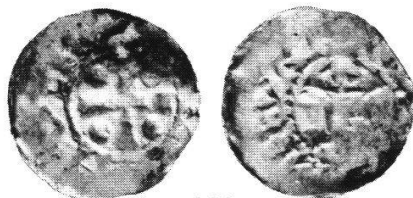
317



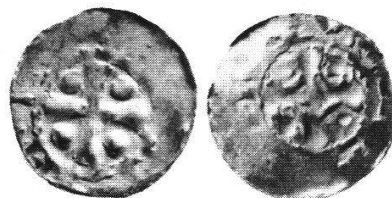
318



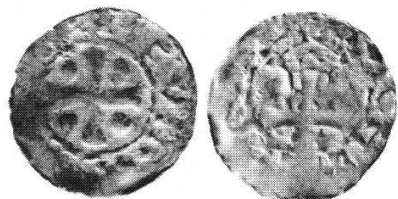
319



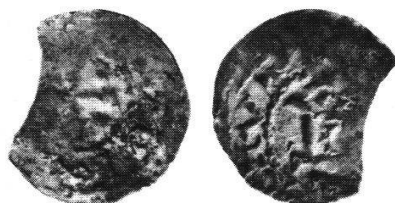
320



321



322



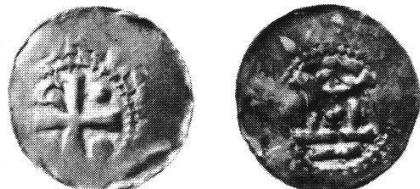
323



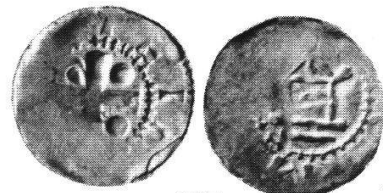
324



325



326



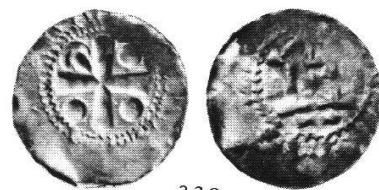
327



328



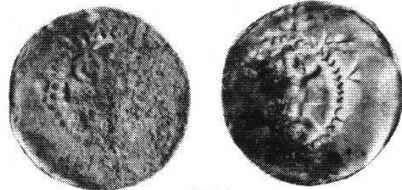
329



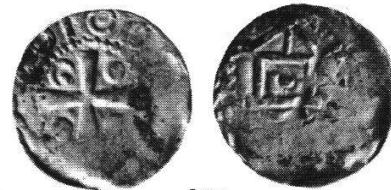
330



331



332



333



334



335



336



337



338



339

316-324 Mainz 328-339 Worms

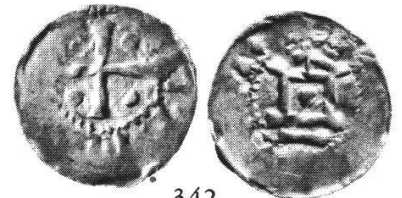
TAFEL 15



340



341



342



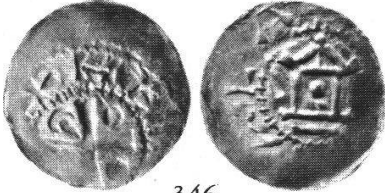
343



344



345



346



347



348



349



350



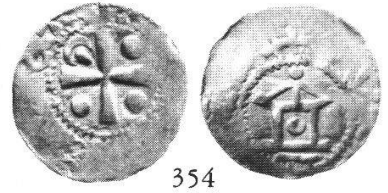
351



352



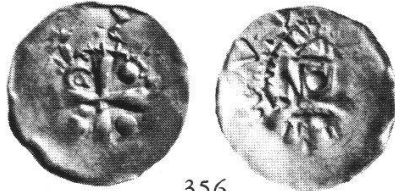
353



354



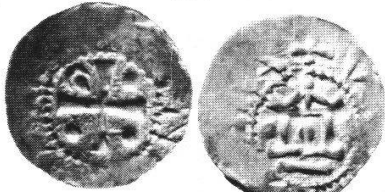
355



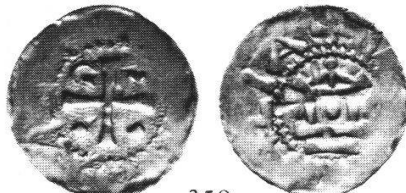
356



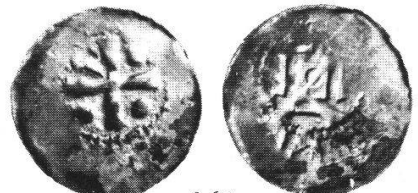
357



358



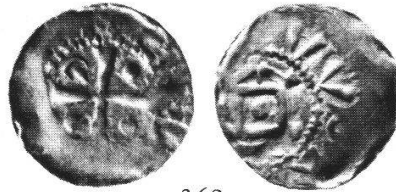
359



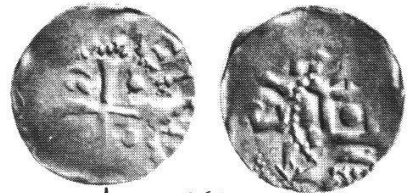
360



361



362



363

Worms



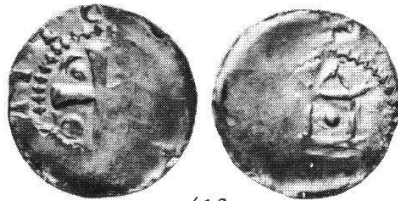




TAFEL 18



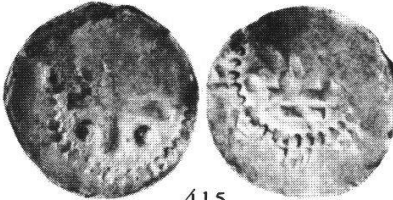
412



413



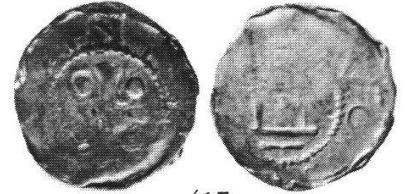
414



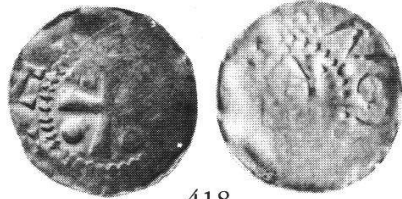
415



416



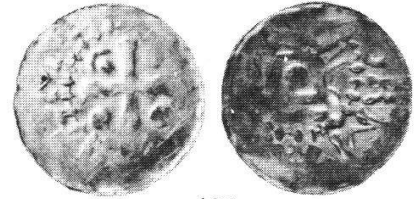
417



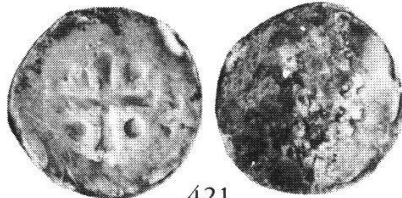
418



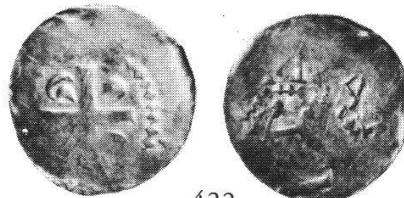
419



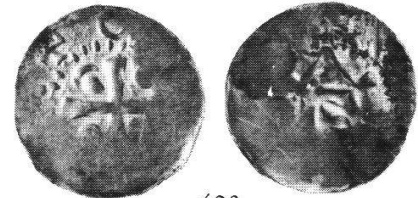
420



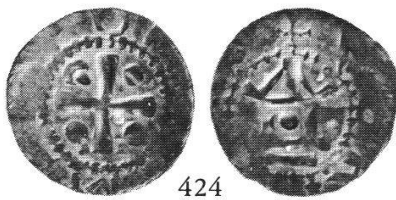
421



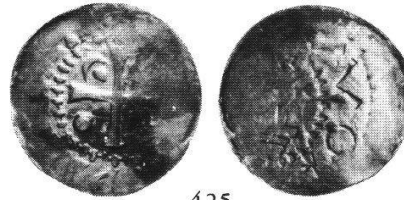
422



423



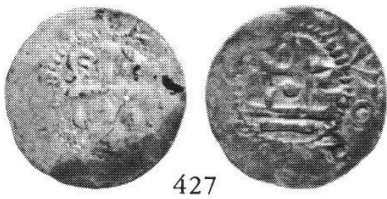
424



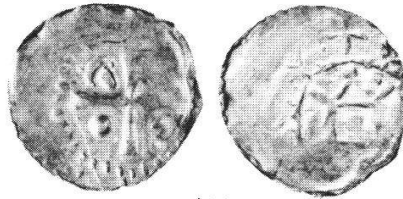
425



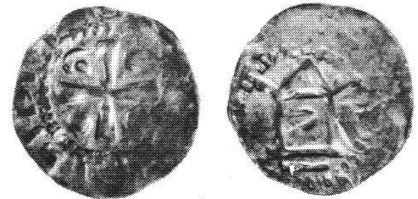
426



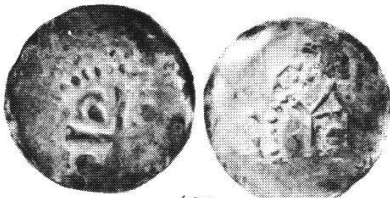
427



428



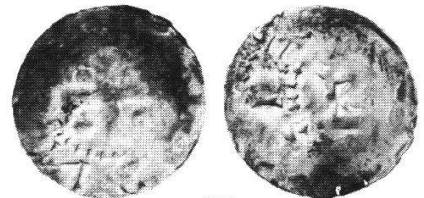
429



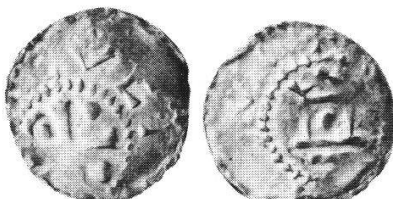
430



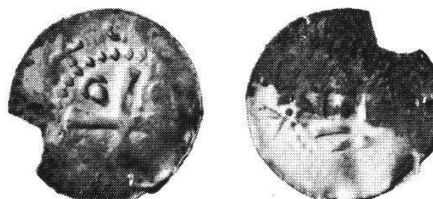
431



432



433

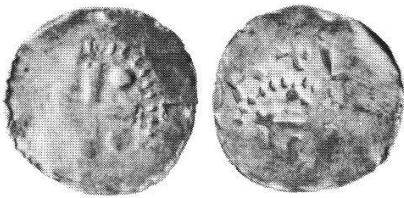


434

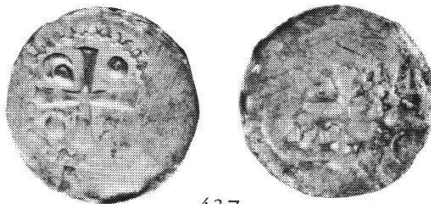


435

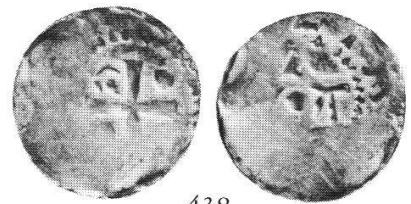
TAFEL 19



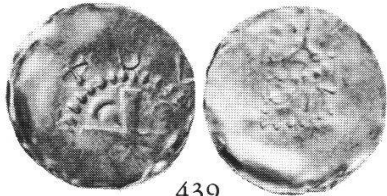
436



437



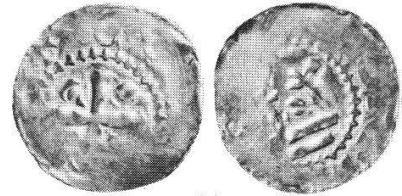
438



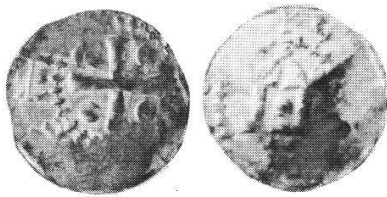
439



440



441



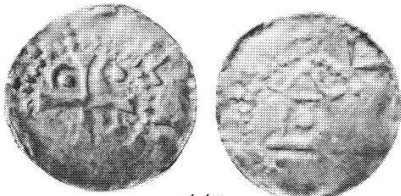
442



443



444



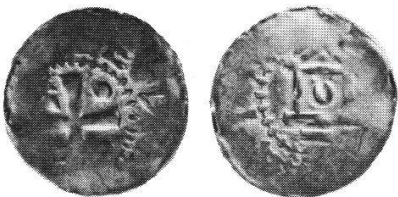
445



446



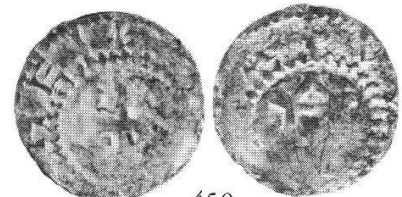
447



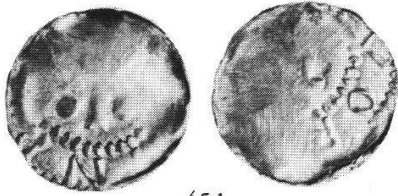
448



449



450



451



452



453



454



455



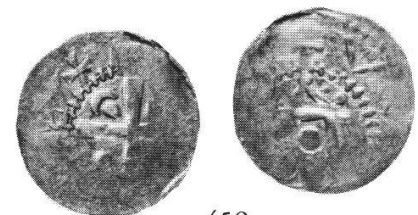
456



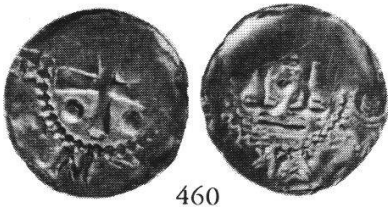
457



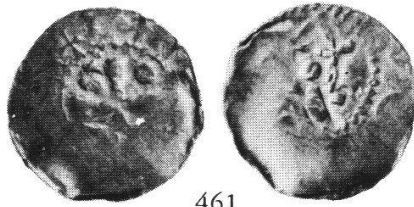
458



459



460



461



462



463



464



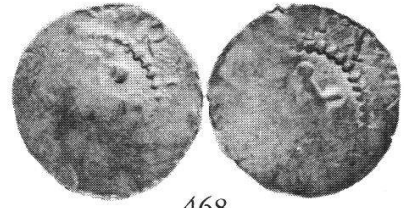
465



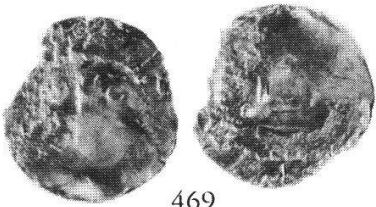
466



467



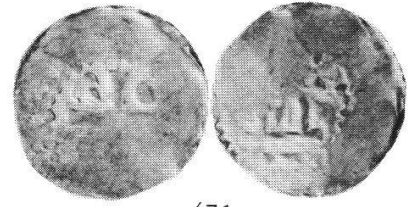
468



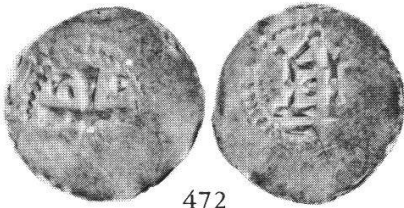
469



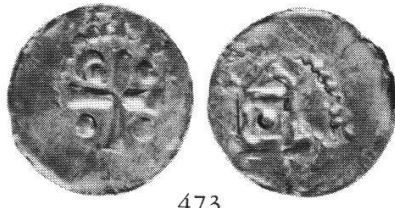
470



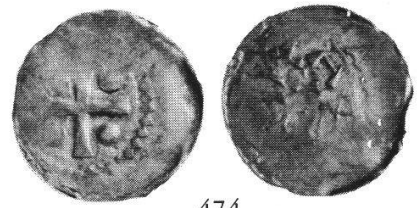
471



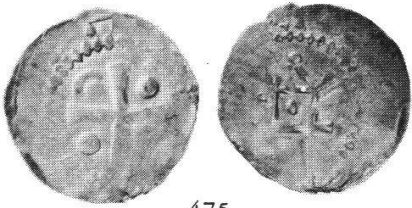
472



473



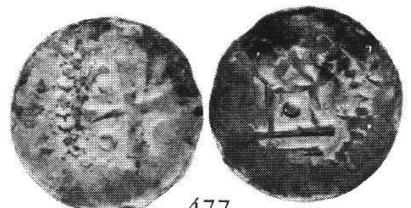
474



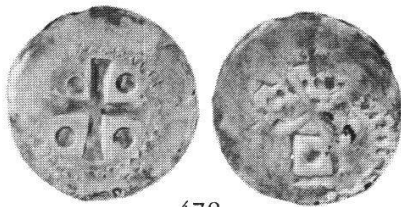
475



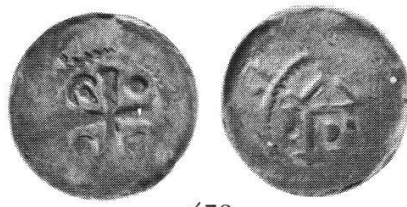
476



477



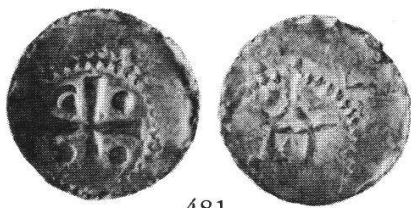
478



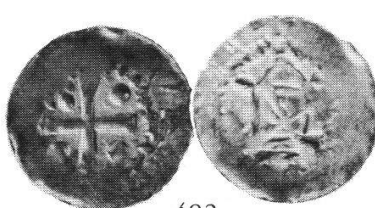
479



480



481

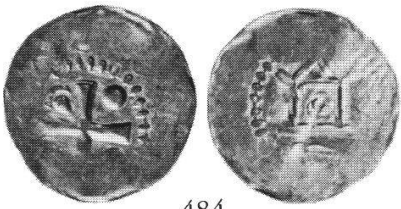


482

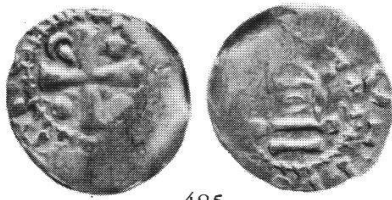


483

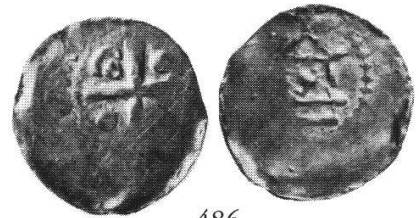
TAFEL 21



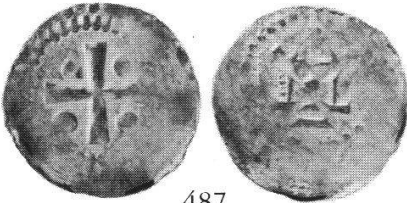
484



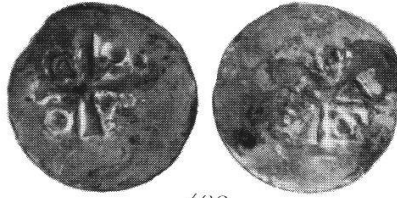
485



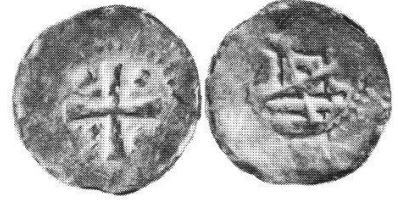
486



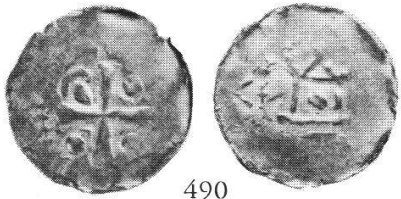
487



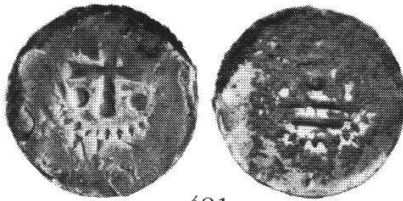
488



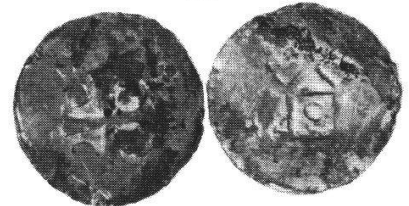
489



490



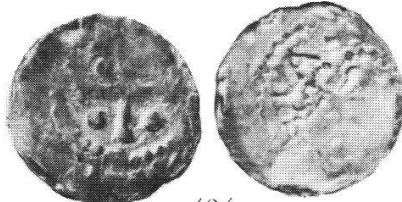
491



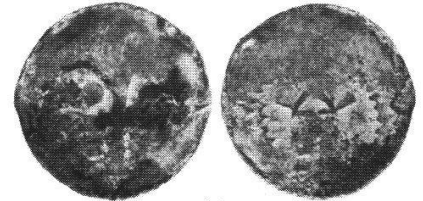
492



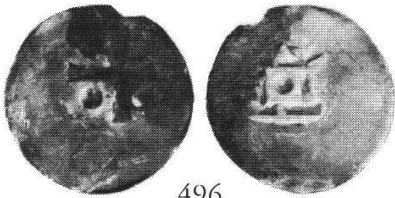
493



494



495



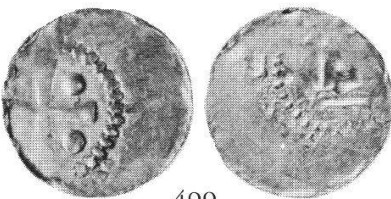
496



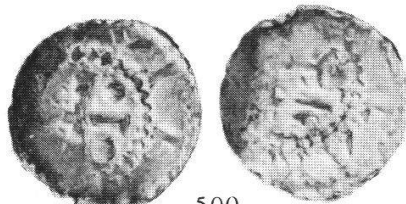
497



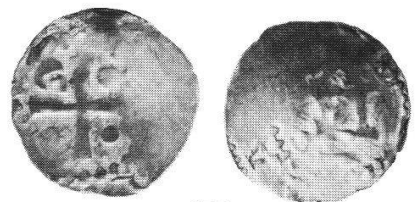
498



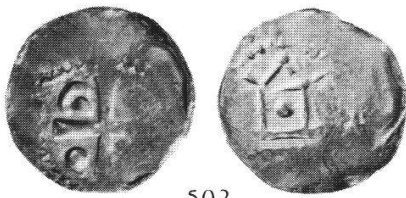
499



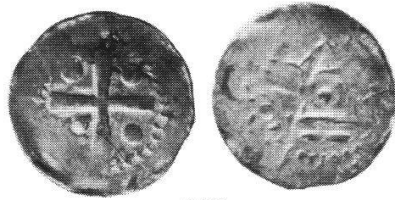
500



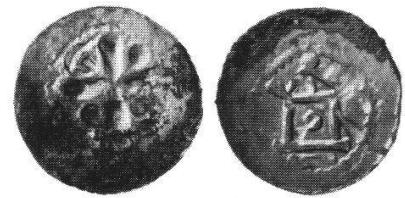
501



502



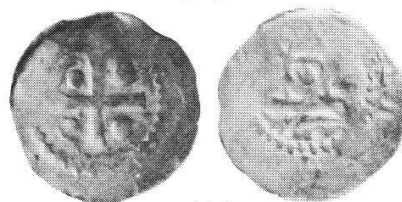
503



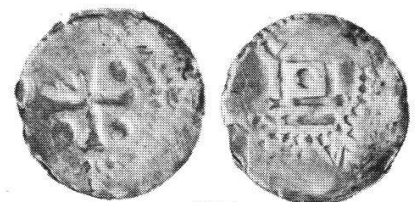
504



505



506

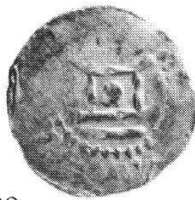


507

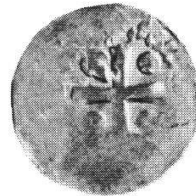
TAFEL 22



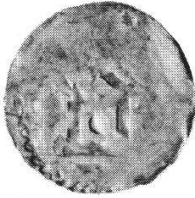
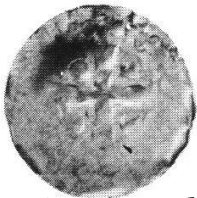
508



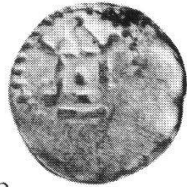
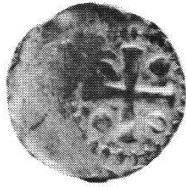
509



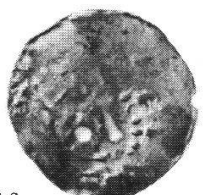
510



511



512



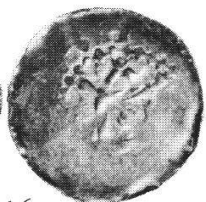
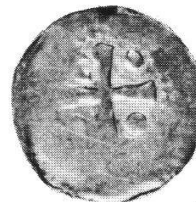
513



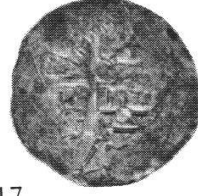
514



515



516



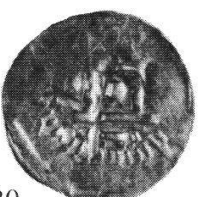
517



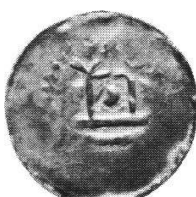
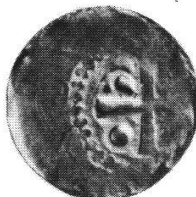
518



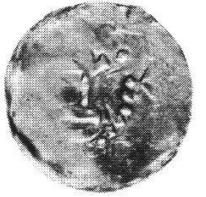
519



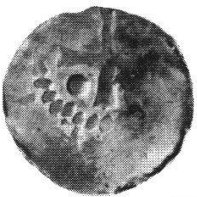
520



521



522



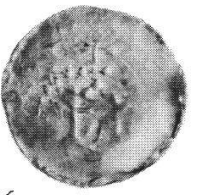
523



524



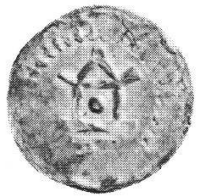
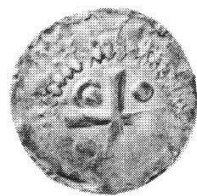
525



526



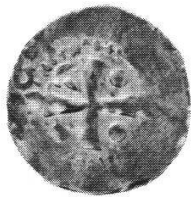
527



528



529



530



531















652



653



654



655



656



657



658



659



660



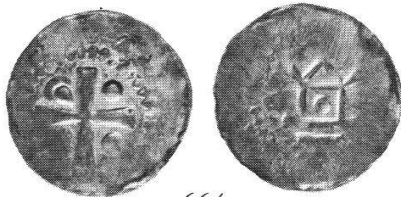
661



662



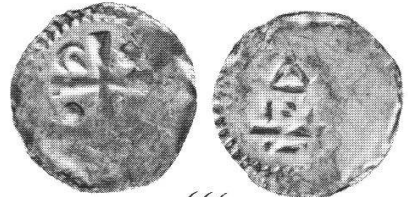
663



664



665



666



667



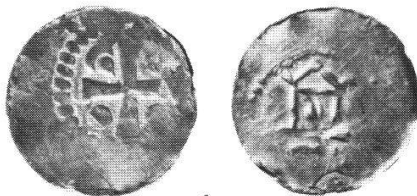
668



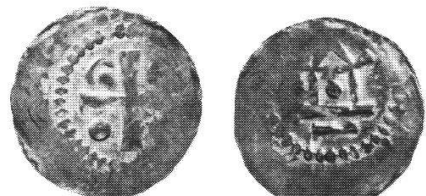
669



670



671



672



673



674

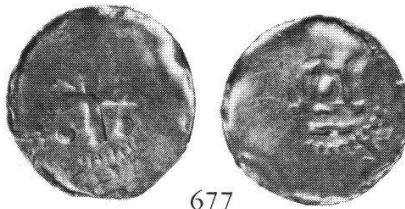


675

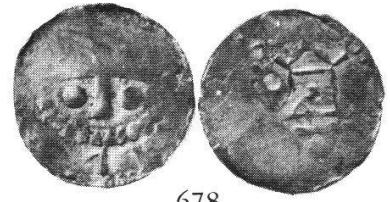
TAFEL 29



676



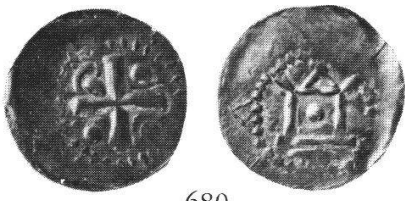
677



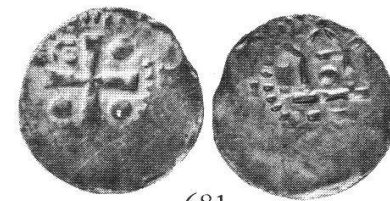
678



679



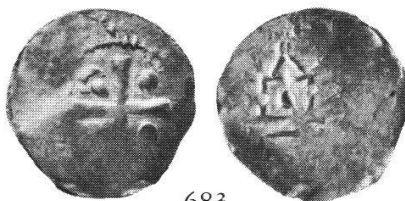
680



681



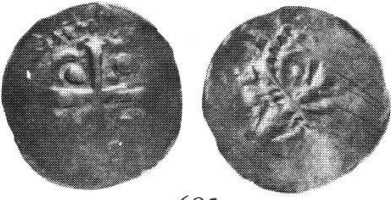
682



683



684



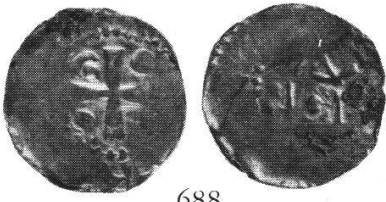
685



686



687



688



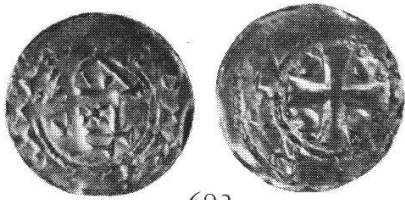
689



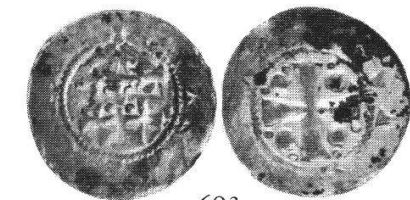
690



691



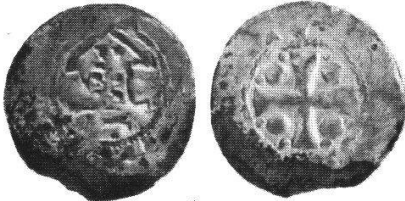
692



693



694



695



696



697



698



699

676-688 Worms 689-699 Speyer











TAFEL 34



805



806



807



808



809



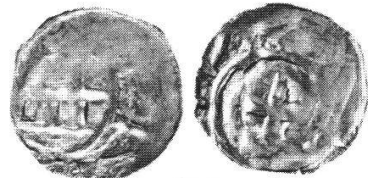
810



811



812



813



814



815



816



817



818



819



820



821



822



823



824



825



826



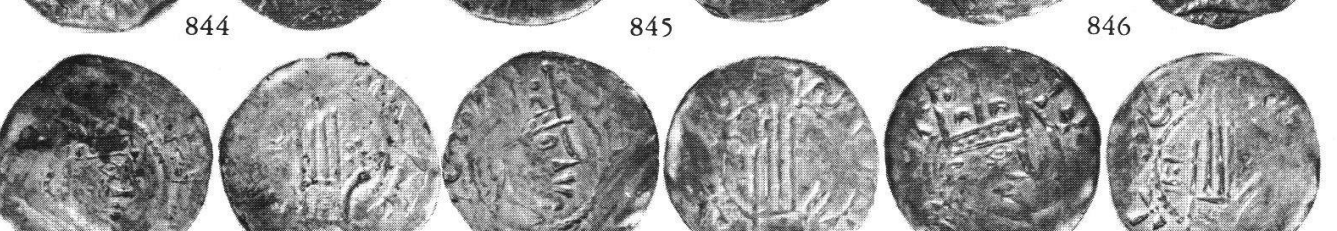
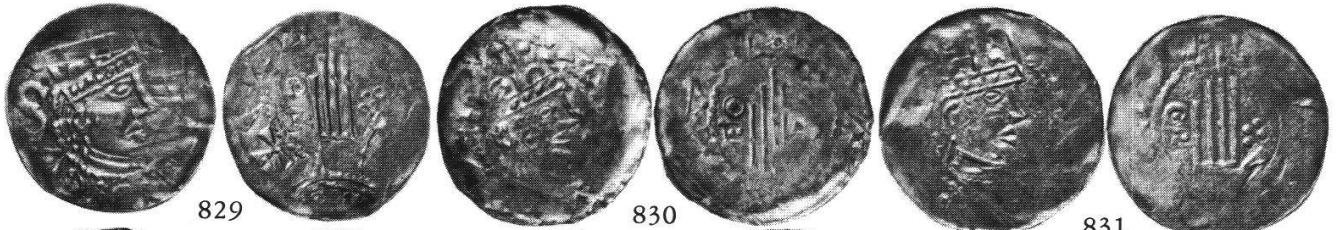
827



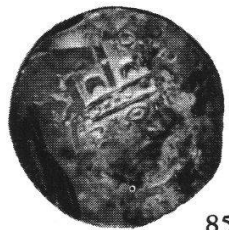
828

805-810 Speyer 811-814 Ulm 815-828 Eßlingen

TAFEL 35



TAFEL 36



853



854



855



856



857



858



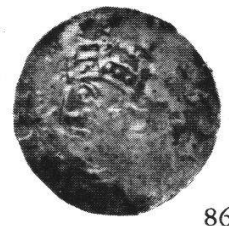
859



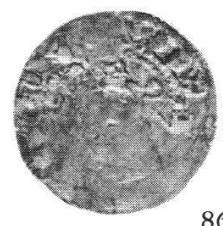
860



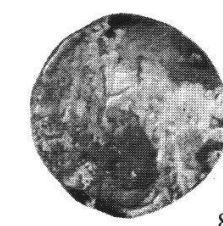
861



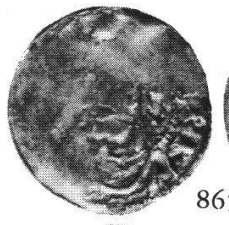
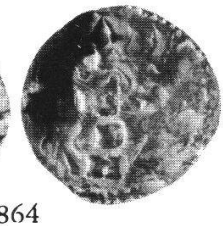
862



863



864



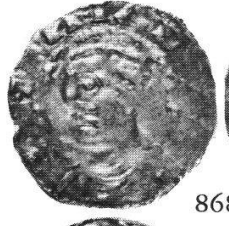
865



866



867



868



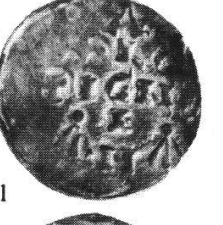
869



870



871



872



873



874



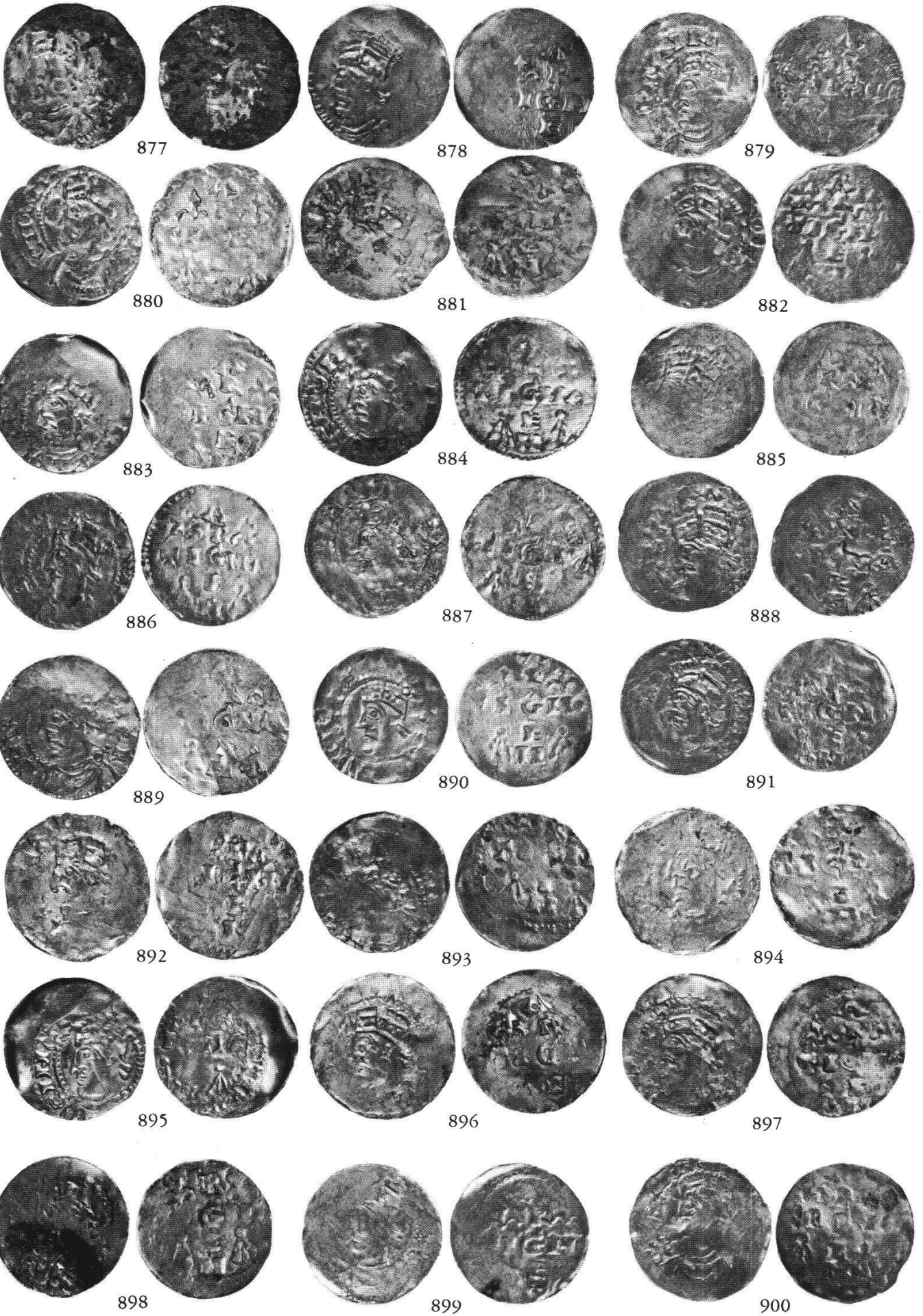
875



876

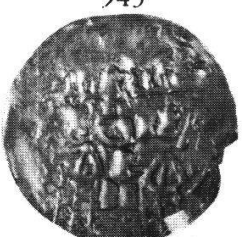
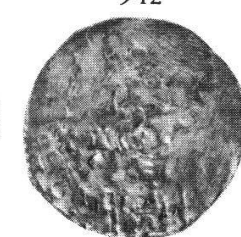
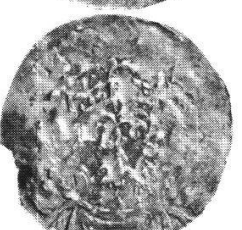
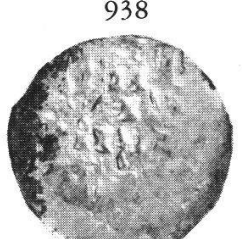
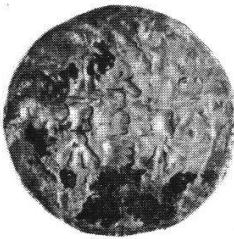
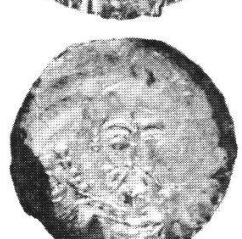
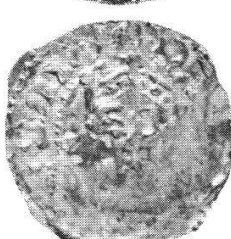
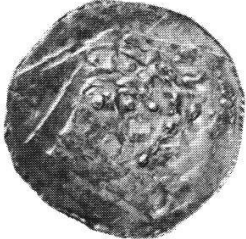
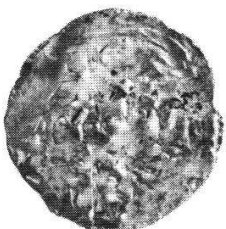
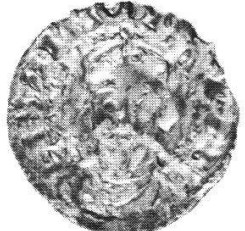
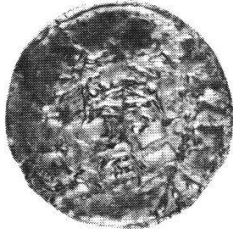
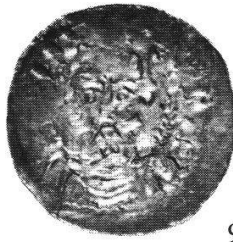
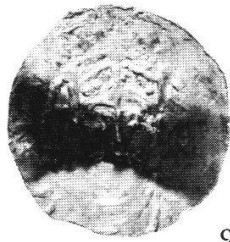
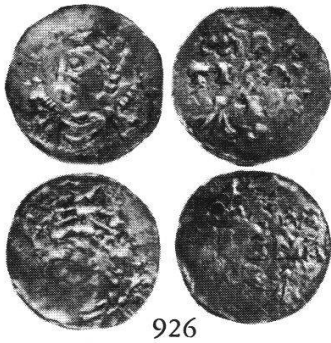


TAFEL 37



Straßburg









944



945



946



947



948



949



950



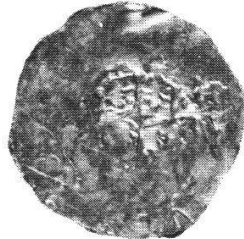
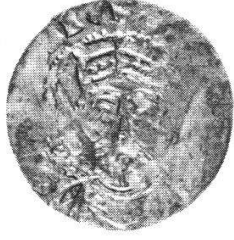
951



952



953



954



955



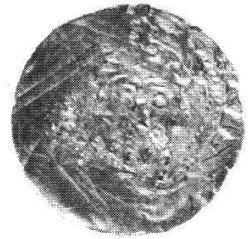
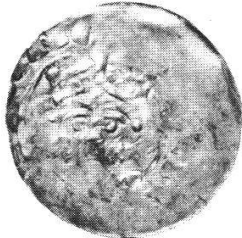
956



957



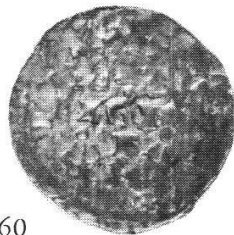
958



959

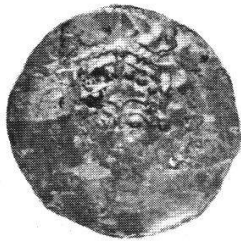


960





961



962



963



964



965



966



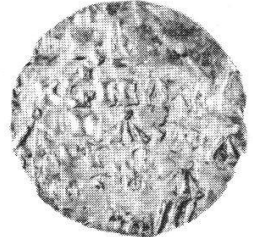
967



968



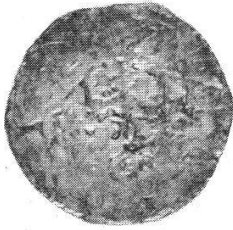
969



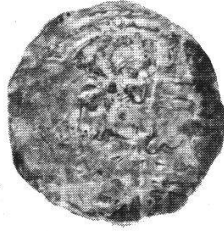
970



971



972



973



974



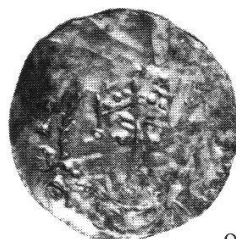
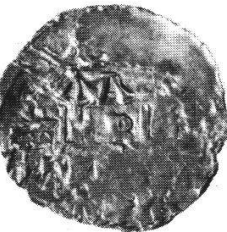
975



976



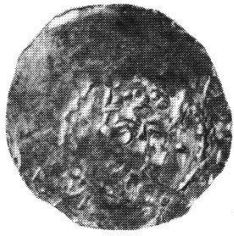
977



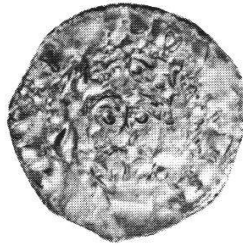
TAFEL 42



978



979



980



981



982



983



984



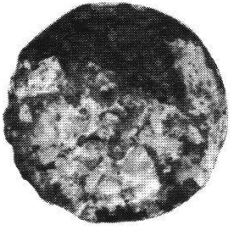
985



986



987



988



989



990



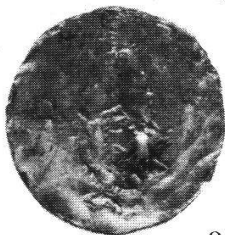
991



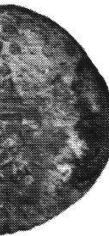
992



993

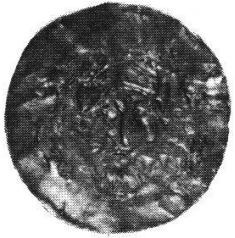


994





TAFEL 44



1012



1013



1014



1015



1016



1017



1018



1019



1020



1021



1022



1023



1024



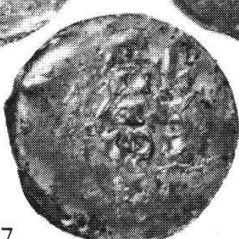
1025



1026



1027



1028

Straßburg



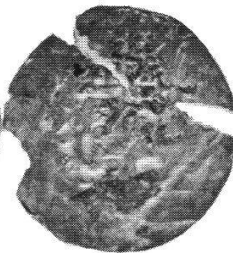
1029



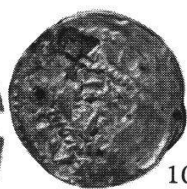
1030



1031



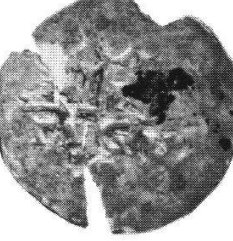
1032



1033



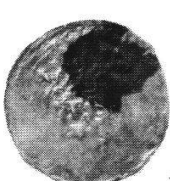
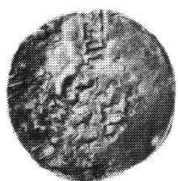
1034



1035



1036



1037



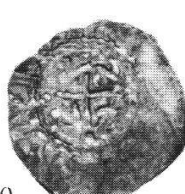
1038



1039



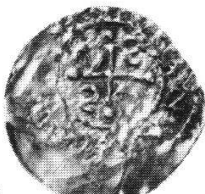
1040



1041



1042



1043



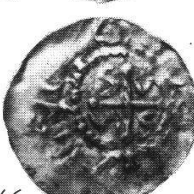
1044



1045



1046



1047



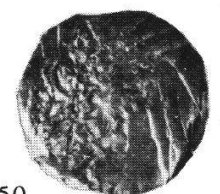
1048



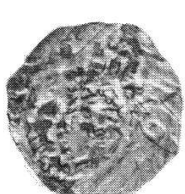
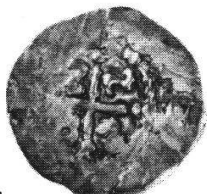
1049



1050



1051



1052



1053



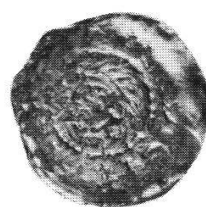
TAFEL 46



1054



1055



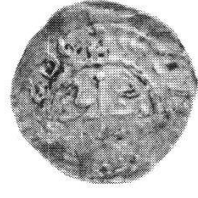
1056



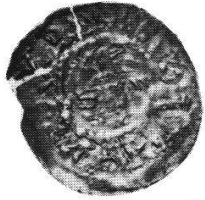
1057



1058



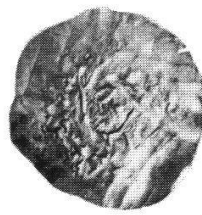
1059



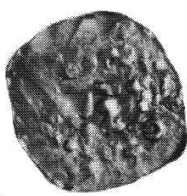
1060



1061



1062



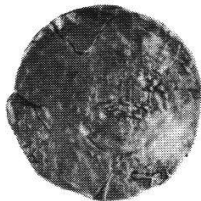
1063



1064



1065



1066



1067



1068



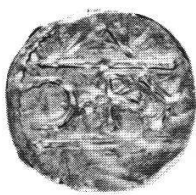
1069



1070



1071



1072



1073



1074

1054-1064 Konstanz 1065-1067 Zürich 1068-1073 Chur 1074 England

TAFEL 47



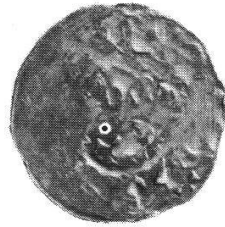
1075



1076



1077



1078



1079



1080



1081



1082



1083



1084



1085



1086



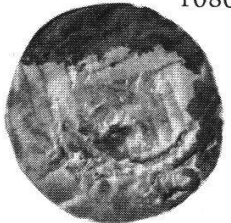
1087



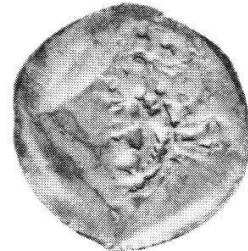
1088



1089



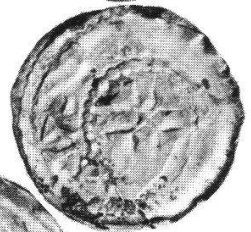
1090



1091



1092



Unbestimmte





1093

1094

1095

1096

1097

1098

1099

1100

1101

1102

1103

1104

1105

1106

1107

1108

1109

1110

1111

1112

1113

Unbestimmte