

Ruth Huggenberg

Autor(en): **[s.n.]**

Objektyp: **Article**

Zeitschrift: **The Swiss observer : the journal of the Federation of Swiss Societies in the UK**

Band (Jahr): - **(1954)**

Heft 1239

PDF erstellt am: **27.06.2024**

Persistenter Link: <https://doi.org/10.5169/seals-694056>

Nutzungsbedingungen

Die ETH-Bibliothek ist Anbieterin der digitalisierten Zeitschriften. Sie besitzt keine Urheberrechte an den Inhalten der Zeitschriften. Die Rechte liegen in der Regel bei den Herausgebern.

Die auf der Plattform e-periodica veröffentlichten Dokumente stehen für nicht-kommerzielle Zwecke in Lehre und Forschung sowie für die private Nutzung frei zur Verfügung. Einzelne Dateien oder Ausdrucke aus diesem Angebot können zusammen mit diesen Nutzungsbedingungen und den korrekten Herkunftsbezeichnungen weitergegeben werden.

Das Veröffentlichen von Bildern in Print- und Online-Publikationen ist nur mit vorheriger Genehmigung der Rechteinhaber erlaubt. Die systematische Speicherung von Teilen des elektronischen Angebots auf anderen Servern bedarf ebenfalls des schriftlichen Einverständnisses der Rechteinhaber.

Haftungsausschluss

Alle Angaben erfolgen ohne Gewähr für Vollständigkeit oder Richtigkeit. Es wird keine Haftung übernommen für Schäden durch die Verwendung von Informationen aus diesem Online-Angebot oder durch das Fehlen von Informationen. Dies gilt auch für Inhalte Dritter, die über dieses Angebot zugänglich sind.

JEREMIAS GOTTHELF CENTENARY.**An N.S.H. Celebration.**

With the welcome support of the Anglo-Swiss Society the London Group of the Nouvelle Société Helvétique succeeded in organising on the 1st of November a singularly impressive and enjoyable celebration of the centenary of one of our most distinguished writers, Jeremias Gotthelf, who died a hundred years ago on October 22nd. It was held at Londonderry House with a short opening speech by Monsieur E. Bernath, representing the Minister. Dr. H. M. Waidson of Hull University, author of a recent book on Gotthelf, gave a lecture of absorbing interest on the Swiss writer and the significance of his work. He has kindly agreed to provide an abbreviated version for early publication in the "Swiss Observer". After an interval, passages from Gotthelf's works were read in the original text by Dr. Guido Frei, literary director at the Studio Zürich, Swiss Broadcasting Corporation, and in her own English adaptation by Miss Selma Vaz Dias. Warm applause rewarded the lecturer as well as the readers. Despite the deplorable refusal of another Swiss society to co-operate in this celebration of a famous Swiss author it enjoyed a fairly large attendance considering it held little appeal for our French speaking compatriots.

*H.E.***RUTH HUGGENBERG.****Piano Recital.**

We have great pleasure in directing the attention of our readers to a Piano Recital by our well-known compatriote Ruth Huggenberg, which will take place on Saturday, December 11th, 1954, at Wigmore Hall, Wigmore Street, W.1. (see advertisement)

Ruth Huggenberg, has during the last few years on many occasions given her support at some of the Swiss functions, and by attending the above mentioned recital, the Colony has an opportunity to show her their appreciation for her always generous collaboration.

FREIGHT EXPRESS LIMITED

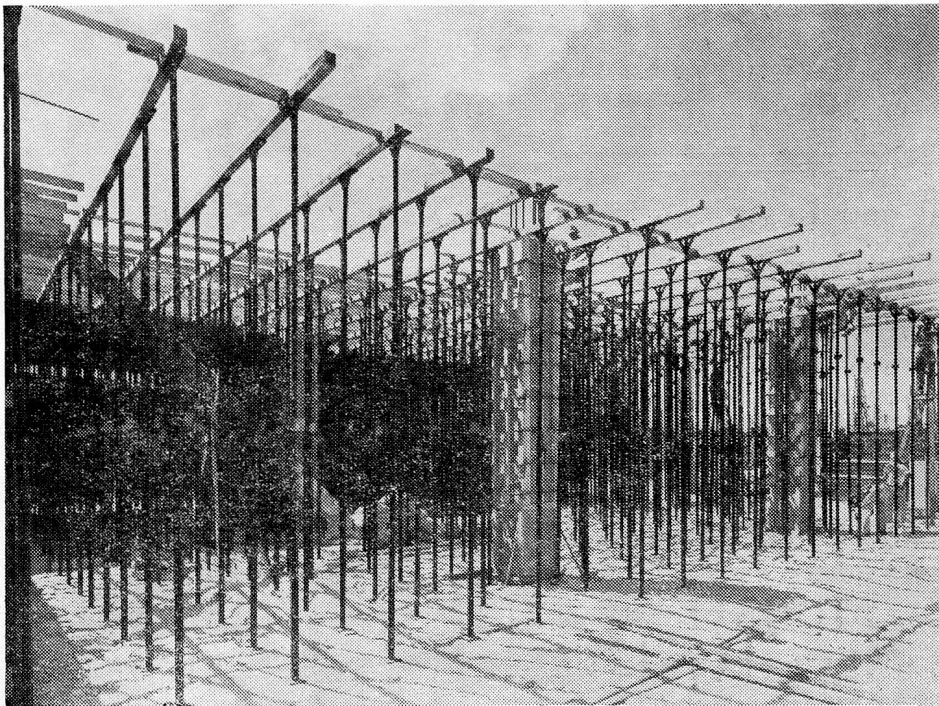
SHIPOWNERS, BROKERS,
CHARTERING AGENTS,
FORWARDING, WHARFAGE

11/12, FENCHURCH STREET, LONDON, E.C.3

Phone: MANsion House 7561/7
Telegrams: "Telcoport, Telex, London"

Express Wharf, 38, Westferry Road, London, E.14

Phone: EASt 2422/3

ACROW *in the U.S.A.*

The Acrow Organisation has many ramifications. Chief among them is the service it renders to building contractors in all parts of the world.

In the construction of the new Miami Post Office in Florida, for instance, the Hamilton Construction Co. used 5,500 Acrow Props, as well as Beam Clamps and Column Clamps, for supporting temporary formwork.



ACROW (ENGINEERS) LTD.,
South Wharf, Paddington, London, W.2
AMBassador 3456 (20 lines)

SUBSCRIPTIONS RECEIVED.

M. E. Hauwyler, J. Blaser, O. Bartholdi, W. P. Leuch, Mrs. Meade-King, F. E. Wenker, Mrs. G. Oldoni-Gianella, R. Ehrenzeller, C. de Mierre, E. Hauert, W. Beckmann, A. Kunzler, J. Stettler, W. Richards, Mrs. I. de Maria, C. E. Seinet, Miss M. Paly, Th. Ritter, A. Brun, L. Rechenmacher, J. Trachsel, F. Rothenbühler, P. A. Duvoisin, E. Frey, F. B. Tschudy, Mrs. E. M. Steel, Hermann Meier, J. Born, Mrs. C. Tee, A. Duruz, Dr. M. L. Schroeter, E. Gassmann, J. W. Reber, C. Ruegg, G. C. Wahl, C. Schorno, Mrs G Sermier, Mrs L. R. Clements, R. Schweizer, G. Muller, C. T. Lehmann, C. Nater, E. H. Muller, E. Weiss, Ad. Schmid, P. H. Aubaret, A. Jaccard, Mrs. Alice Cima, A. Altweg, R. B. Meier, E. Schneider, J. W. Fawcett, Miss von Dach, W. Forster, Mrs. W. Studer, M. Grether, Mrs. H. C. Cownie, O. Rodel, M. Hurlimann, A. H. L. Cuany, Max Grether, F. Bassi, F. R. Lier, Mrs. M. Korhumel, O. Tenger, E. G. Maeder, L. S. R. Ash, H. Huber, F. Meier, Mrs. E. A. Honegger, Mrs. L. Schobinger, Mrs. J. Sudell, A. Bleiker, W. Schlappfer, J. F. J. Amann, Th. Bruderer, H. P. Holliger, F. Zogg, A. Fink, A. Rueff, Popularis Swiss Tours, Miss E. Ruttimann, J. Scheidegger, M. Seymour, Miss L. Hess, A. Lutz, F. A. Gluck, Mrs. F. M. C. Oliver, E. J. Frehner, Mrs. A. McMillin, E. R. F. Oggier, E. Flury, E. Bachofen, E. E. Rognon, C. Filliez, Mrs. R. H. Manning, E. W. Service, O. E. Wetzel, R. Hangartner, E. Eha, Mrs. N. H. Ellis, E. Beutler, W. R. Renfer, E. Meyer, Miss A. Reber, J. W. E. Norman, R. Grunig, J. Blaettler, H. Frederick, Miss P. Haeusler, E. Hirt, Sisters of Mercy, R. Fairweather, F. Burri, J. Dubs, Miss M. Gfeller, G. Jenne, G. Bonetti, Mrs. A. M. Themans, Mrs. M. Habersaat, E. Staheli, M. Schaer, M. F. Brandenburger, R. de Wattville, C. F. de Steiger, A. H. Charton, A. Hoffmann, Mayor C. Dennison, J. M. Hess, E. Ferrari, M. Heiling, E. K. Martin, Ch. Illi, A. Paris, A. Spargnapani, Miss J. Kull, A. Strittmatter, R. Burkhard, S. Veglio, W. Stettbacher, V. L. Bataillard, C. H. L. Cuenod, J. Sieber, L. Jobin, H. Walti, C. Pulfer, E. A. Neuenschwander, W. Riesen, E. L. Schlaeppli, B. Frauchiger, A. Steiner, L. Wuest, Miss A. Widmer, R. de Maria, Miss B. Krähenbühl, J. Grueter, Miss R. Huggenberg, G. Unseld, Mrs. R. Wood, E. A. Gisiger, A. Wehrli, Miss H. F. Ruch, Mrs. A. C. Muller, J. M. Rueff, F. Ansermoz, Mrs. A. Kessler, O. E. Simmoth, H. Waibel, Mrs.

L. Buhler, Miss C. Beretta, Minister W. de Bourg, F. P. Bovet, H. Trepp, Miss M. Schlup, H. Berli, V. H. Wildi, F. J. Meier, Bauermeister, Swiss Club, Manchester, H. Monney, M. Lindemann, E. Schmid, E. Fehrlin, G. Gysi, O. Schoenholzer, H. Heim, Anton Bon, C. Kaeser, Miss E. Crack, R. C. Leutwyler, G. Dreyfuss, Chas. Studer, Miss E. Steiner, Mrs. R. R. Williams, W. Preiswerk, G. H. Staehl, W. Fischer, H. Furrer, J. Tache, C. Landau, O. Petit, Dr. H. K. Jucker, H. Meier, E. Steiner, G. Engesser, Ch. Valon, S. Lanfranchi, Mrs. R. Kaluza, R. W. D. de Guyon, J. Brunner, H. Oswald, F. Schubeler, O. Frey, H. Braun, J. Keller, A. Wettstein, Karl Kaegi, Mrs. M. Wix, J. J. Wetter, Omega Watch Co., Mrs. L. Moehr, Miss M. Christinat, F. Dové, C. Bertschi, P. Naef, E. F. Burger, E. Goodbehere, M. A. Leuba, G. E. Suter, Miss E. F. Irvine, Mrs. Elmore Scheibler, E. Zwickly, Miss P. E. Zurfluh, L. Rechenmacher, Ed. Hauert, Chalet Cheese, H. Mock, Crédit Suisse, M. Bronimann, P. Moehr, P. Haberstick, C. B. Adam, W. R. Gamper, E. A. Doelly, A. R. Tissot, Mrs. M. Duff Ingram.

(To be continued.)

THE ANGLO-SWISS INSURANCE AND RE-INSURANCE AGENCY LTD.

of 29-30, HIGH HOLBORN, LONDON, W.C.1.

Tel. : CHAncery 8 5 5 4 (5 Lines)

are at the disposal of Members of the
Swiss Colony to advise about any
insurance matters.

SWISS BANK CORPORATION

(A Company limited by Shares, incorporated in Switzerland).

99, GRESHAM STREET, E.C.2
and 11c, REGENT STREET, S.W.1.



Capital and Reserves s.f. 226,000,000



NEW YORK AGENCY
15 NASSAU STREET.

Branch Office: 49th STREET OFFICE
10, WEST 49th STREET, NEW YORK 20, N.Y.

Affiliated Company in Canada :

SWISS CORPORATION FOR CANADIAN INVESTMENTS LTD., MONTREAL.

BASLE • ZURICH • ST. GALL • GENEVA • LAUSANNE
LA CHAUX-DE-FONDS • NEUCHATEL • SCHAFFHOUSE • BIENNE