

Personal

Objektyp: **Group**

Zeitschrift: **The Swiss observer : the journal of the Federation of Swiss Societies in the UK**

Band (Jahr): - **(1956)**

Heft 1281

PDF erstellt am: **12.07.2024**

Nutzungsbedingungen

Die ETH-Bibliothek ist Anbieterin der digitalisierten Zeitschriften. Sie besitzt keine Urheberrechte an den Inhalten der Zeitschriften. Die Rechte liegen in der Regel bei den Herausgebern.

Die auf der Plattform e-periodica veröffentlichten Dokumente stehen für nicht-kommerzielle Zwecke in Lehre und Forschung sowie für die private Nutzung frei zur Verfügung. Einzelne Dateien oder Ausdrucke aus diesem Angebot können zusammen mit diesen Nutzungsbedingungen und den korrekten Herkunftsbezeichnungen weitergegeben werden.

Das Veröffentlichen von Bildern in Print- und Online-Publikationen ist nur mit vorheriger Genehmigung der Rechteinhaber erlaubt. Die systematische Speicherung von Teilen des elektronischen Angebots auf anderen Servern bedarf ebenfalls des schriftlichen Einverständnisses der Rechteinhaber.

Haftungsausschluss

Alle Angaben erfolgen ohne Gewähr für Vollständigkeit oder Richtigkeit. Es wird keine Haftung übernommen für Schäden durch die Verwendung von Informationen aus diesem Online-Angebot oder durch das Fehlen von Informationen. Dies gilt auch für Inhalte Dritter, die über dieses Angebot zugänglich sind.

PERSONAL.

We deeply regret to announce the passing away, at the age of 68, of Mrs. Bertha Studer, of River Lodge, Hook Road, Goole, Yorks.

The deceased was the widow of the late Walter Studer, who died in 1952; she was born in Langnau i. E., and came to this country in 1911, residing in London until 1925, and since then in Yorkshire.

* * *

It is with deep regret that we announce the deaths of Mr. J. Joerin, of "Coverdale", Summers-hill Chislehurst, Kent, Mr. E. Bachofen, "Bar Hill, Wembley Park, Mddx., Mr. W. J. Gradmann, of 51 Wessex Gardens, N.W.11., and Mr. F. Schubeler, of 74, Scotts Lane, Shortlands, Kent. Obituaries will appear in our next issue.

* * *

Heartiest congratulations are extended to Mr. J. H. Ungricht, of 28 Bramber Road, Worthing, who celebrated on Friday, September 14th, his 85th birthday. Mr. Ungricht was a former President of the Swiss Mercantile Society.

WELFARE OFFICE FOR SWISS GIRLS.

Miss M. WOLFER,

31, Conway Street, W.1. (Tel: EUS. 2173.)

Office hours: 2 to 4 p.m. Tuesday, Wednesday, Thursday and Saturday. Also by appointment.

SWISS CHURCH.

SERVICES EVERY SUNDAY at 11 a.m. and 6.30 p.m.

IN FRENCH: At the Eglise Suisse, 79, Endell Street, Shaftesbury Avenue, W.C.2, except on the fourth Sunday in the month: evening service at 6 p.m. in the French Church, 9 Soho Square, W.1.

Pasteur C. Reverdin, Telephone: FIN. 5281.

IN GERMAN: At St. Mary Woolnoth Church, Lombard Street, Bank, E.C.3. (During summer months evening services start at 7 p.m.)

Pfarrer H. Spörri, Telephone: MOU 6018.

SWISS CATHOLICS IN LONDON.

CHURCH and SERVICES: St. ANN's Catholic Church, Abbey Orchard Street (off Victoria St.), S.W.1.

SUNDAYS: Holy Masses at 8, 9, and 11 o'clock.

HOLIDAYS OF OBLIGATION: Holy Masses at 7.30, 9 a.m. and 5.45 p.m.

WEEKDAYS: Holy Mass at 7.30 a.m.

CONFESSIONS in German, Italian and French: EVERY SATURDAY:

a) at St. Ann's from 11.30 a.m. — 12.45 p.m.

b) at Westminster Cathedral: from 5-6.30 p.m.

c) at any other time by appointment.

CHAPLAIN: Rev. A. Lanfranchi, St. Ann's Church, Abbey Orchard Street, S.W.1. Tel.: ABBey 2895.

MISCELLANEOUS ADVERTISEMENTS

ELSIE FINGER (SWISS) FLORIST, 237, Junction Road, Tufnell Park, London, N.19. Tel ARCHway 3711. Daily until 7 p.m. (Home: NORTH 5942) Flowers, House Plants, etc, Bouquets, Wreaths, all designs at short notice. **MEMBER OF INTER-FLORA** (The world-wide Flower Relay service).

SWISS GIRLS seeking employment as domestics in private families should call Finger's Employment Bureau, 62, Frith Street, W.1, Tel. GERrard 5515 (no charge). Always large selection of vacancies for girls still abroad. We can arrange for permit.

ELDERLY SWISS GENTLEMAN, widower without children, in good position in the City, would like to meet middle-aged lady, preferably French-Swiss, with a view to marriage. Replies (which will be treated in strict confidence) should be addressed, with photo, to Box 101.

WANTED FIRST-CLASS SHORTHAND TYPIST, fluent in both English and German. Experience in Engineering an asset but not essential. Mayfair address. Write fully to Box No. 301, c/o Swiss Observer, 23, Leonard Street, London, E.C.2.

FREIGHT EXPRESS LIMITED

SHIPOWNERS, BROKERS,
CHARTERING AGENTS,
FORWARDING, WHARFAGE

11/12, FENCHURCH STREET, LONDON, E.C.3

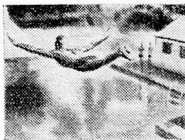
Phone: MANsion House 7561/7
Telegrams: "Telcoport, Telex, London"

Express Wharf, 38, Westferry Road, London, E.14

Phone EASt 2422/3

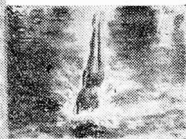
Pictures like this that can't be posed—the living, breathing, moving happenings that make the best pictures of all can only be taken with a cine camera. And the beauty of it is that cine films are far from expensive. With this Bolex B8 you can take 24 or more good length action sequences for just over £1, including processing charge. At under 11d. a shot this compares very favourably with ordinary still photography. See the Bolex B8 at any good photo shop. Note its precision construction—so vital in a cine camera. That's because it is made in one of the great watch-making centres of Switzerland.

**you get
it all**



with a

**CINE
CAMERA**



BOLEX B8

The Swiss Precision cine camera

Send for brochure

CINEX LTD., 9/10 North Audley St, W.1

Name

Address

