

An ingenious clock

Autor(en): **[s.n.]**

Objektyp: **Article**

Zeitschrift: **The Swiss observer : the journal of the Federation of Swiss Societies in the UK**

Band (Jahr): - **(1956)**

Heft 1282

PDF erstellt am: **04.07.2024**

Persistenter Link: <https://doi.org/10.5169/seals-693105>

Nutzungsbedingungen

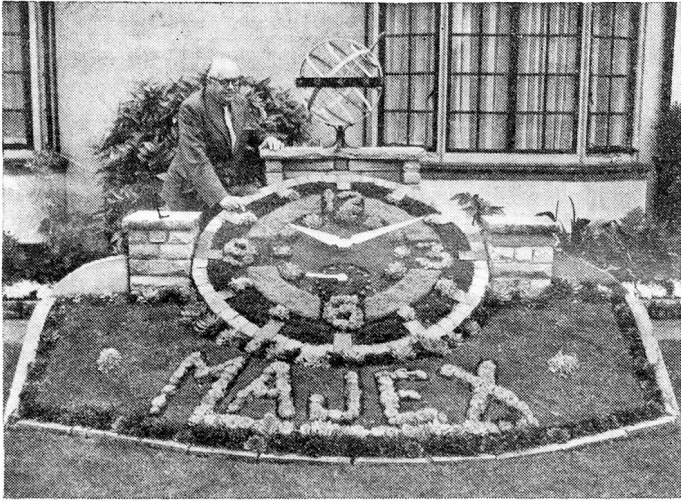
Die ETH-Bibliothek ist Anbieterin der digitalisierten Zeitschriften. Sie besitzt keine Urheberrechte an den Inhalten der Zeitschriften. Die Rechte liegen in der Regel bei den Herausgebern.

Die auf der Plattform e-periodica veröffentlichten Dokumente stehen für nicht-kommerzielle Zwecke in Lehre und Forschung sowie für die private Nutzung frei zur Verfügung. Einzelne Dateien oder Ausdrucke aus diesem Angebot können zusammen mit diesen Nutzungsbedingungen und den korrekten Herkunftsbezeichnungen weitergegeben werden.

Das Veröffentlichen von Bildern in Print- und Online-Publikationen ist nur mit vorheriger Genehmigung der Rechteinhaber erlaubt. Die systematische Speicherung von Teilen des elektronischen Angebots auf anderen Servern bedarf ebenfalls des schriftlichen Einverständnisses der Rechteinhaber.

Haftungsausschluss

Alle Angaben erfolgen ohne Gewähr für Vollständigkeit oder Richtigkeit. Es wird keine Haftung übernommen für Schäden durch die Verwendung von Informationen aus diesem Online-Angebot oder durch das Fehlen von Informationen. Dies gilt auch für Inhalte Dritter, die über dieses Angebot zugänglich sind.



AN INGENIOUS CLOCK.

Some three years ago there appeared an article in this paper under the above heading, acquainting our readers that Mr. René Marchand, of Messrs. Marchand & Jobin, Ltd., 100 Hatton Garden, London, E.C.3., had built in his front garden at Hayes Road, Bromley, a floral clock which bore the inscription "May it please Her Majesty", it being Coronation Year.

Mr. Marchand, being an enthusiastic gardener, has recently re-designed his novel and intriguing Majex floral chiming clock at his home in Bromley, which has proved quite an attraction to all passers by.

The clock, which is worked by electricity, now incorporates a second hand, and is still believed to be the only fully-chiming floral clock anywhere. Mr. Marchand has also created an Armillary Sphere, — as can be seen in the photograph — by the only remaining blacksmith in Bromley, same is fully authentic in design, and an object of keen interest to all viewers, as it is seldom that an Armillary Sphere can be seen outside of a Museum, and certainly not as an integral part of a Floral Clock design.

The entire clock is floral, with the exception of the bare outline or frame work. Amongst the many hundreds of beautiful tropical plants of various colours incorporated in its construction are Alternanthera, Echivera and Mesembrianthemum, to name only a few.

The mechanism and Westminster Chimes are independently operated by electrical means; we are told that it keeps perfect time, which is not surprising considering that Mr. R. Marchand is in the watch and clock trade.

**CENTENARY BANQUET & BALL.
CITY SWISS CLUB**

**Friday, November 16th, at the Dorchester Hotel,
Park Lane, W.1.**

Amongst the highlights of the social events in the London Colony, this autumn, will be the celebration of the 100th anniversary of the City Swiss Club.

Events of this kind are of a rare occurrence, and so far only two Societies have attained centuries, namely the Société de Secours Mutuels des Suisses à Londres, founded in 1703, and the Swiss Club, Manchester, founded in 1850.

We are informed that preparations to celebrate this important anniversary with fitting manifestation are well in hand.

Important guests, both from Switzerland, and from our English friends will be invited on this occasion, and we understand that a "surprise entertainment" might be provided.

It is hoped that a great number of old and young members of the Club will attend this "birthday party", together with their friends.

Members of the City Swiss Club, will be shortly advised, and we invite them already now to reserve, Friday, November 16th, 1956.

**Kettners Restaurant has no music and is not
luxurious . . . but the Food and Wine are
superb.**

Roast Surrey
Capon,
Roast Aylesbury
Duckling
served every day



**SHIPPING
FORWARDING
INSURANCE
PACKING**

ALLIED HOUSE :
SWISS SHIPPING Co. Ltd.,
RITTERGASSE 20,
BASLE.

COMPTON'S

LIMITED

**12a & 13, WELL COURT,
BOW LANE, LONDON, E.C.4**

SPECIAL SERVICES TO SWITZERLAND
by TRAIN FERRY (the ALL RAIL Route)
by RHINE CRAFT (the ALL WATER Route)

CONTINENTAL FREIGHT AGENTS TO THE BRITISH RAILWAYS

Tel.: CITY 4053

**SEA
LAND
AIR
RHINE**

ALLIED HOUSE :
JOHN IM OBERSTEG & Co. Ltd.,
AESCHENGRABEN 24/28,
BASLE.

Cables: COMNAVIR