

Zeitschrift: The Swiss observer : the journal of the Federation of Swiss Societies in the UK
Band: - (1964)
Heft: 1449

Werbung

Nutzungsbedingungen

Die ETH-Bibliothek ist die Anbieterin der digitalisierten Zeitschriften. Sie besitzt keine Urheberrechte an den Zeitschriften und ist nicht verantwortlich für deren Inhalte. Die Rechte liegen in der Regel bei den Herausgebern beziehungsweise den externen Rechteinhabern. [Siehe Rechtliche Hinweise.](#)

Conditions d'utilisation

L'ETH Library est le fournisseur des revues numérisées. Elle ne détient aucun droit d'auteur sur les revues et n'est pas responsable de leur contenu. En règle générale, les droits sont détenus par les éditeurs ou les détenteurs de droits externes. [Voir Informations légales.](#)

Terms of use

The ETH Library is the provider of the digitised journals. It does not own any copyrights to the journals and is not responsible for their content. The rights usually lie with the publishers or the external rights holders. [See Legal notice.](#)

Download PDF: 18.10.2024

ETH-Bibliothek Zürich, E-Periodica, <https://www.e-periodica.ch>

**THE
ANGLO-SWISS INSURANCE &
REINSURANCE AGENCY LTD.**

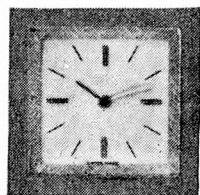
in collaboration with

**THE SWITZERLAND GENERAL INSURANCE
COMPANY (LONDON) LTD.**

52 Leadenhall Street, London E.C.3
Telephone Royal 7200

extend to you the benefit of their long experience in all insurance matters. The "SWITZERLAND" through the parent company "SCHWEIZ" ALLGEMEINE VERSICHERUNGS—AKTIEN—GESELLSCHAFT, ZURICH, have a world-wide organisation in touch with present-day business conditions throughout the world. If you have any enquiries please do not hesitate to approach us.

**ELIZABETH HOUSE, FULWOOD PLACE
HIGH HOLBORN, LONDON, W.C.1**
Telephone CHAncery 8554 (5 lines)



H. KAUFMANN

(1st Floor)
37 GEORGE STREET
(off Baker Street)

LONDON : W.1
Tel : WEL 8583

(Mon to Fri 9 am to 5.30 pm Sat 9 am to 1 pm)

SWISS WATCH MAKER

Wide range of Swiss watches available

SPECIALIST WATCH REPAIRER

Send Watches by Registered Post—Estimates free
All watches electronically tested



drink delicious

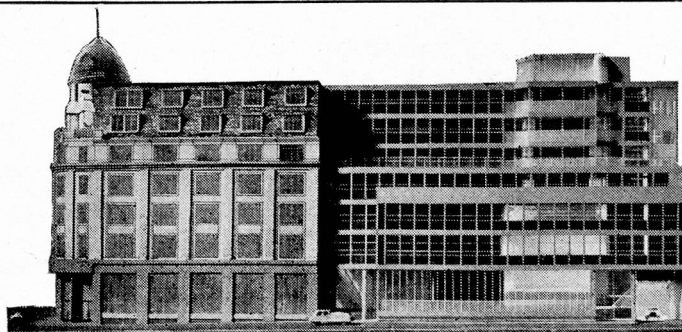
OVALTINE

and sleep away
the cares of the day



**SWISS BANK
CORPORATION**

(A company limited by shares incorporated in Switzerland)



OFFICES
THROUGHOUT
SWITZERLAND
& IN NEW YORK

AFFILIATES
IN MONTREAL
& CASABLANCA

REPRESENTATIVES
IN CENTRAL AND
SOUTH AMERICA

SOCIÉTÉ DE BANQUE SUISSE
SCHWEIZERISCHER BANKVEREIN
SOCIETÀ DI BANCA SVIZZERA

Principal London Office

99 GRESHAM STREET, LONDON E.C.2

(During rebuilding: P.O. Box No. 114, 40 Coleman Street, London E.C.2)

Telephone: Monarch 4000

West End Branch

18 REGENT STREET, S.W.1

(Savings Accounts — currently 2½% p.a. — available)

Telephone: Whitehall 8083

A FULL SWISS BANKING SERVICE AT YOUR DISPOSAL IN LONDON