

The S.B.B. in HO (a nitpickers guide to a better bahn). Part 2

Autor(en): **Jesson, John**

Objektyp: **Article**

Zeitschrift: **Swiss express : the Swiss Railways Society journal**

Band (Jahr): **1 (1986-1987)**

Heft 5

PDF erstellt am: **18.09.2024**

Persistenter Link: <https://doi.org/10.5169/seals-853674>

Nutzungsbedingungen

Die ETH-Bibliothek ist Anbieterin der digitalisierten Zeitschriften. Sie besitzt keine Urheberrechte an den Inhalten der Zeitschriften. Die Rechte liegen in der Regel bei den Herausgebern. Die auf der Plattform e-periodica veröffentlichten Dokumente stehen für nicht-kommerzielle Zwecke in Lehre und Forschung sowie für die private Nutzung frei zur Verfügung. Einzelne Dateien oder Ausdrucke aus diesem Angebot können zusammen mit diesen Nutzungsbedingungen und den korrekten Herkunftsbezeichnungen weitergegeben werden. Das Veröffentlichen von Bildern in Print- und Online-Publikationen ist nur mit vorheriger Genehmigung der Rechteinhaber erlaubt. Die systematische Speicherung von Teilen des elektronischen Angebots auf anderen Servern bedarf ebenfalls des schriftlichen Einverständnisses der Rechteinhaber.

Haftungsausschluss

Alle Angaben erfolgen ohne Gewähr für Vollständigkeit oder Richtigkeit. Es wird keine Haftung übernommen für Schäden durch die Verwendung von Informationen aus diesem Online-Angebot oder durch das Fehlen von Informationen. Dies gilt auch für Inhalte Dritter, die über dieses Angebot zugänglich sind.

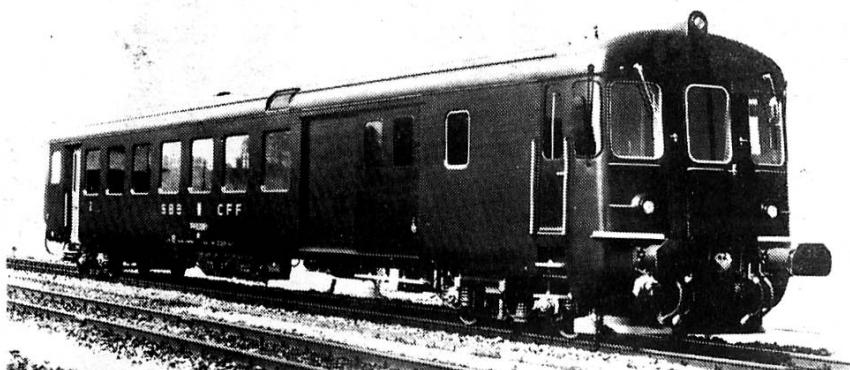
THE S.B.B. IN HO (A NITPICKERS GUIDE TO A BETTER BAHN)

By John Jesson

PART 2 LIMA BDt-II

These 30 push-pull driving trailers were built in 1976 and carry numbers in the series 50 85 82-33 910 - 939. They weigh 33 tons, are passed for speeds of 125 km/h when being propelled, 140 km/h otherwise, and have 48/2nd class seats and a 19 sq.m service/luggage area.

The Lima model is generally close to scale, the height above rail level being the only discrepancy that notices, as it is not only nearly 2½mm too high but the Roco Type II coaches, with which it normally operates, are slightly low. Detail is mostly good; handrails are moulded as part of the main body, with those by the passenger doors picked out in yellow. The cab front windows have silvered frames and windscreen wipers, while the large passenger windows have moulded representations of the grab handles. The bogies are certainly conspicuously Swiss, but whether they are correct is open to question, as they are more like the bogies fitted to the international RIC stock than those used under the Type II vehicles. The bogie under the non-driving end should be fitted with a generator and footsteps. An interior is provided, moulded in bright red plastic, and the triple headlights are lit when travelling forwards. Inscriptions are well printed and comprehensive, and the number, 50 85 82-33 916 - 6 is correct. (It has been known for manufacturers to get the computer check number wrong).



*BDt series 50-85 82-33
910-939. Photo SBB.*

From the modellers point of view this is a good model which can be improved with little difficulty. My starting point was to reduce the overall height while retaining, for the time being, the existing bogies. Replacing the 11.7 mm Ø Lima wheels with Roco 9 mm Ø sets (40194) does over half the job. While looking for ways to reduce the height a bit more, I found that, when the screws fastening the chassis to the body were tightened, both ends of the chassis were slightly too low. I solved this with some long B.A. screws which are positioned just outside the bogie pivots and are tapped into the glazing moulding. This has brought the height down to 43 mm, which I find acceptable. Footboards, generator and handrails I made from plastic and brass..

The only concession Lima have made to expediency is to cut away the bottom of the cab front skirt to allow their coupling freedom of movement. This has also meant that the guard Sheet/snowplough is not modelled. If the coupling is retained, there is not much that can be done but if, like me, you do away with the coupling, then the skirt can be built up, but it's not an easy job, and I have not got it right yet.

The rest of the work is in the paint shop; the interior can be made to look much more realistic with a little time. (The colours I used were listed in the last issue of Swiss Express.) On the outside, the roof was painted with Roco 7007S Umbragrau, which is a very close match to the roof colour on the Roco Type II coaches. The square windows of the luggage area, between the cab and sliding doors on each side, should have

aluminium frames, as should the top vent of the toilet window. Humbrol Polished Aluminium was used for these, and also for the footsteps above the front buffers. The passenger doors were given a coat of Satin Gold, and the door still painted black where Limas gold paint had spread, and handrails touched in with yellow.

Einheitstyp II. LIMA BDt (30 9151 L)

Length over buffers			Length over body			Bogie centres			Bogie wheelbase		
1:1	1:87	model	1:1	1:87	model	1:1	1:87	model	1:1	1:87	model
25430	292,3	289,5	24566	283,4	281,3	18900	217,2	216,0	2500	28,7	27,0

Height above rail			Body width			Buffer height			Buffer separation		
1:1	1:87	model	1:1	1:87	model	1:1	1:87	model	1:1	1:87	model
3700	42,5	44,9	2850	32,8	32,9	1060	12,2	15,0(fr) 14,0(bk)	1750	20,1	19,8

POSTSCRIPT

Since writing this I have fitted my BDt with bogies from a Roco B-II coach, which has improved the appearance and height no end, but involves a fair amount of work. Electrical pick-ups needs to be provided to retain the headlights, and new mountings for the footsteps arranged at the passenger end. (N.B. These footsteps are not centrally mounted on the bogies, because the bogies are not quite centrally partitioned under the passenger entrance doors on the Type II stock, and the bogie involved is reverse-mounted to position the generator correctly.) At the driving end, I have removed the mounting points for the steepboards and filled the remaining holes.

VICTORS

JUST THE BEST!

166 Pentonville Road Islington London N1 9JL
Telephone 01-278 1019

COME AND VISIT OUR BEAUTIFUL NEW SHOP!
New Look Same Address Same Super Stock Same Extra Low Prices!
The Specialists in European models and books for all your Swiss modelling requirements.

ROCO

First for all the new items! First for the lowest prices! First for the best stocks!

44006 Special Wuerzburg 5 coach set	£63.90
44007 Special Tegernsee-Bahn articulated 3-axle coaches	£13.05
46431 SNCB 'Talbot' hopper wagon	£6.50
43525 DB 'Glass Train' ET 491 Railcar	£62.45
43536 SBB Ae6/6 New 'red' version	£40.50
43535 SBB Ae6/6 green (New Chassis)	£44.10
43422 DB V200 Diesel (Superb model)	£38.05
4176A SNCF X2800 Railcar and trailer (Special extra low price)	£49.95
4175A SNCF X2800 Railcar	£39.36
44257A SNCF X2800 trailer only	£12.95
43445 FS (Italy) Diesel Bo-Bo	£35.10
44563 FNM (Italy) E30 type coach	£9.80
44564 FNM (Italy) E30 type coach, scale length	£9.80
44565 NSB (Norway) Express coach, scale length E30 type	£9.80
44566 SNCF (E30) Express coach 2nd class	£9.80
44567 SNCF (E30 type) Express coach 1st/2nd class	£9.80
44568 SNCF (E30 type) Express baggage	£9.80
44569 OBB (E30 type) Express coach 2nd class	£9.80
44570 OBB (E30 type) Express coach 1st/2nd class	£9.80
44571 OBB (E30 type) Express baggage	£9.80
44436 FS 1st/2nd class coach (1/100 scale length)	£8.40
46242 DR Ore wagon type Fad 159	£7.90
46316 FS long wheel base stake wagon	£5.60
46318 DSB long wheel base stake wagon	£5.60
46391 SBB-CFF Silo wagon (grey)	£6.30
44333 SBB Baggage Van green (new lettering)	£7.45
44334 SBB Baggage Van green (new two tone livery)	£8.40
44484 OBB Schieren 2nd Class orange & cream new version	£7.70
44250B SNCF UIC 2nd Class Couchette (green & grey)	£8.30
44250C SNCF UIC 2nd Class Couchette (blue & cream)	£8.30
54235A DB Eurofima 1st Class (scale length)	£10.85
54238A OBB Eurofima Restaurant Car	£11.95
46274 F.S. Italy Covered Van	£5.20
46282 OBB 'Bicycle' Van	£5.50
46291 CFL (Luxembourg) Sliding roof bogie van	£5.40

NEW LIMA HO SCALE

208148 OBB 2067 66 0-6-0 rod drive diesel	£22.00
208168 FS ALn two-car railcar set	£26.95
208169 SNCF CC14000 Co-Co electric blue	£30.80
208170 SNCF CC14000 Co-Co electric green with working pantograph	£34.65
309103 SNCF 1st class coach AB (green and grey) scale length	£3.85
309104 SNCF 2nd class coach B10 (green and grey) scale length	£3.85
309132 Belgium 2nd class coach (red and grey) 7'	£3.56

NEW LIMA N SCALE

220228 SNCF BB9400 Bo-Bo electric	£19.80
220296 SNCF BB9400 Bo-Bo electric latest two-tone grey livery	£19.80
220293 SBB/CFF Re4/41 Bo-Bo electric latest red livery	£19.25
220349 FS Italy scale length baggage van	£3.30
220311 DB scale length passenger baggage van	£3.30
320882 SNCF scale length 1st class coach (green)	£3.05
320883 SNCF scale length 1st class coach (green and grey)	£3.30
320884 SNCF scale length 2nd class coach (green and grey)	£3.30
320736 Erx type hopper 'SGW'	£2.20

NEW FROM ROCO

1600 Sauerer Komet Grossglockner bus 'Austrian Post Office'	£4.15
1601 Sauerer Komet bus 'Sizkraft Tours'	£4.20
1315 Steyr 780 TLF 2000 Rosenbauer fire engine	£3.20
1328 Steyr fire repair truck SRF with HIAB crane, light mast etc.	£3.85
1331 Opel Blitz fire service red with tilt top	£2.65
1344 Fire brigade jeep with hard top and roof lights	£1.65
1711 Jeep double set 'Renegade' and 'Laredo' trailer and tops	£4.05
1335 Mercedes LFB fire truck with ladder and DRW pump	£4.05
1336 Dodge Cheetah fire truck in yellow	£2.65
1337 Opel Blitz TLF 15 fire truck and trailer	£4.05
1517 Steyr 600 rigid tilt 'Kuhne & Nagel'	£2.55

Please add 75p per order to cover postage and packing.

Phone orders for payment by Visa, Access or Amex can be accepted.

We are open Monday to Saturday from 10.00am till 5.30pm.

Nearest underground station Kings Cross.