

[Impressum]

Objektyp: **Group**

Zeitschrift: **Swiss express : the Swiss Railways Society journal**

Band (Jahr): **1 (1986-1987)**

Heft 10

PDF erstellt am: **17.07.2024**

Nutzungsbedingungen

Die ETH-Bibliothek ist Anbieterin der digitalisierten Zeitschriften. Sie besitzt keine Urheberrechte an den Inhalten der Zeitschriften. Die Rechte liegen in der Regel bei den Herausgebern. Die auf der Plattform e-periodica veröffentlichten Dokumente stehen für nicht-kommerzielle Zwecke in Lehre und Forschung sowie für die private Nutzung frei zur Verfügung. Einzelne Dateien oder Ausdrucke aus diesem Angebot können zusammen mit diesen Nutzungsbedingungen und den korrekten Herkunftsbezeichnungen weitergegeben werden. Das Veröffentlichen von Bildern in Print- und Online-Publikationen ist nur mit vorheriger Genehmigung der Rechteinhaber erlaubt. Die systematische Speicherung von Teilen des elektronischen Angebots auf anderen Servern bedarf ebenfalls des schriftlichen Einverständnisses der Rechteinhaber.

Haftungsausschluss

Alle Angaben erfolgen ohne Gewähr für Vollständigkeit oder Richtigkeit. Es wird keine Haftung übernommen für Schäden durch die Verwendung von Informationen aus diesem Online-Angebot oder durch das Fehlen von Informationen. Dies gilt auch für Inhalte Dritter, die über dieses Angebot zugänglich sind.

Ein Dienst der *ETH-Bibliothek*
ETH Zürich, Rämistrasse 101, 8092 Zürich, Schweiz, www.library.ethz.ch

<http://www.e-periodica.ch>

SWISS EXPRESS

The Swiss Express is the official journal of the Swiss Railways Society (formerly the Swiss Railway Enthusiasts Society Founded 1980).

EDITOR: Alan Ramage, 58 Kenneth Road, Thundersley, Essex SS7 3AW, England.

Tel. No. 0268 755281

OFFICERS OF THE SOCIETY

President A.E. Hauser-Gubser, Vice President R.A. Dungleison

Chairman Society and London Branch A.J.Pike 5 Cotterells Hill, Hemel Hempstead, Herts HP1 1JA.

Secretary John Jesson 27 Campbell Road, Croydon, Surrey CRO 2SQ

Membership Secretary Dave Howsam, 3 Balmain Road, Davyhulme, Manchester M31 3TE

Tel. No. 061 748 7850

Sales Officer G. Baker, The Old Bakehouse, 2 Anderson Road, Weybridge, Surrey KT13 9NL

Treasurer W.R.O. Bird. Librarian G. Della Gana. Other Committee members: P. Rigby

CONTRIBUTIONS:

The Editor is pleased to receive contributions for inclusion in the Swiss Express. An S.A.E. should accompany all items that are required to be returned. No responsibility can be accepted by the Editor for items that are lost or damaged howsoever caused.

ADVERTISING RATES

Members private sales and wants are advertised free of charge subject to space being available. Content of advertisement must relate to the Swiss Railway hobby. Trade advertisements. Rates on application to the editor. The Society cannot accept responsibility for the actions of any advertisers in this journal.

COPYRIGHT

No part of this journal may be reproduced without permission of the copyright owners.

DISCLAIMER

The opinions expressed by contributors are not necessarily those of the editor or the Society.

PUBLICATION DATES

The Swiss Express is published quarterly and is circulated in March, June, September and December.

SOCIETY DIARY

BRISTOL AND BATH

Branch Organiser: Dr. J.F. Henderson, School of Engineering, University of Bath, Claverton Down, Bath BA2 7AY.

LONDON

Chairman A.J. Pike, 5 Cotterells Hill, Hemel Hempstead, Herts HP1 1JA.

1 July, Rack and cable railways in Switzerland. Please bring your slides.

2 Aug., 'Free for all' - your slides of anything Swiss. You can 'bring and buy' too.

2 Sep., 'Foreign' evening. Your slides of Swiss rolling stock seen outside Switzerland and any views of railways bordering the country.

7 Oct., Geoff Dunster will give a slide show "My view of Switzerland and its railways".

4 Nov., Chris Elliott will improve your knowledge of the railways in Canton Appenzell.

2 Dec., This will be a geographical quiz using slides and maps to pose the questions. There will be a (very) small prize for the winner.

Any suggestions for future programmes and offers to give talks would be welcomed by the Chairman - address above.

Venue: Model Railway Club Headquarters, Keen House, Calshot Street (off Pentonville Road near Kings Cross Station) ring bottom bell if doors are closed. Meetings start at 19.00

Note. The London Branch is now circulating a news letter. Any member who wishes to be included on the mailing list should send an S.A.E. to the Chairman Alan Pike.

MANCHESTER

Branch Organiser Dave Howsam 3 Balmain Road, Davyhulme, Manchester M31 3TE.

Tel No. 061 748 7850

1 Apr. John Stein - slides .

6 May Members slide competition. 10 slides per member on a single theme.

3 Jun. Members slides of railways in Graubunden.

1 Jul. Video Films.

5 Aug., 2 Sept., 7 Oct., 4 Nov. and 2 Dec. (programmes to be announced).

Venue: British Rail Staff Association, Piccadilly Station, Manchester; Meetings start at 19.30 (slides begin at 20.00 prompt. 21.15 onwards is 'Chat Time'. Visiting members are requested to confirm programme with Dave Howsam to ensure that there has been no late change.

NORTH EAST

Branch Organiser Ernie Brack, 10 Tern Close, South Beach, Blyth, Northumberland. Tel.No. Blyth 361172 or Dave Ford Tel. No. Blyth 369060.

Meetings are held on the first Wednesday of each month at the above address. Please telephone to confirm times. The branch is currently constructing a Swiss HO layout - "Isenthal".

SCOTLAND

Branch Organiser Peter Rigby, 28 Mannerston, Linlithgow, West Lothian EH49 7ND.
Tel No. 050 683 4310

For details of latest meetings please send an S.A.E. or telephone Peter Rigby.

Euro Rail Mail

VOTRE SPÉCIALISTE
SNCF — SBB

ROCO "HO"

43009	SNCF X2800 SET	£62.73	43535	SBB Ae 6/6	£50.15
43200	SBB C5/6	£66.30	43539	SBB Ce 6.8 11	£114.13
43467	SNCF BB63000	£43.82	44600	SNCF Coach B10 Green	£10.25
43486	SNCF BB4600	£43.82	43446	OBB 1189 S/H	£42.00
43487	SNCF BB20011	£49.05	43488	SNCF BB300 S/H	£28.00
43529	SBB Ee 3/3	£53.51	4195S	SBB Ae 6/6 S/H	£30.00

SEND SAE FOR FULL ROCO PRICE LIST

SCENIC MATERIAL (MINIMUM ORDER £5.00)

SCATTER COAT To simulate grass, bracken and foliage for model hedges and trees. The perfect non-fade material. Each pack contains approx. 4 sq. ft. of coverage. Six colours: Medium/dark/light/mixture in fine green; earth and straw. Medium/dark/light in coarse green. 60p per pack.

READY CUT HEDGE This kit produces an extremely realistic hedge 6ft to 4mm scale. Complete with sufficient foliage to make 6 linear feet of flexible easy to fit model hedge. £1.50 per kit.

TREE KIT This kit has fifteen 4½" deciduous trees for the unbeatable price of £1.50. Scatter can be purchased separately. £1.50 per kit.

Please add £1.00 for p & p overseas at cost all prices subject to currency fluctuation Will accept postal order cheque or Eurocheque made out to Euro Rail Mail — Strictly mail order regret no VAT relief.

P.O. Box 119, Sonning Common, Reading RG4 9ST England

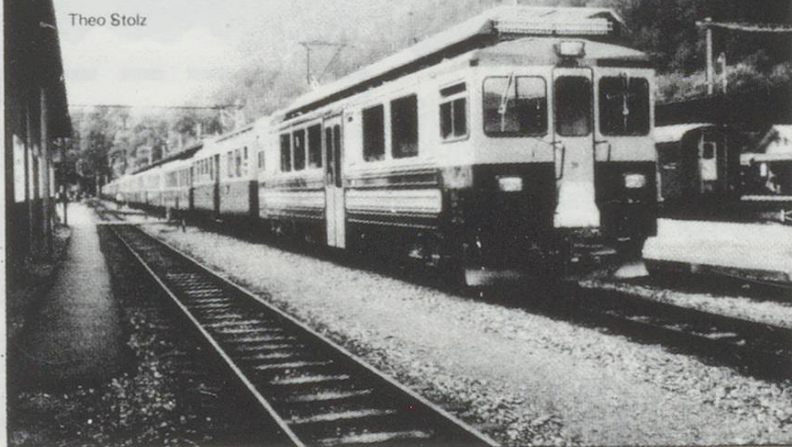
FRONT COVER

*The oldest cogwheel motorcoach still in operation. Arth-Rigi-Bahn No. 6
See story page 13. Photo A.R.B.*

Swiss Railway Society Book Sales

Die Triebfahrzeuge der Bahnen der Jungfrauregion

Theo Stolz



Die Triebfahrzeuge der Bahnen der Jungfrauregion.
German. 96 pages 90 photos. SFr20/£8.40

Payments

Payments can be made in Sterling or Swiss Francs. Other currencies surcharge equivalent to SFr8.£ Payments to SRS, other payments to Giles Baker. Postcheque payments to a/c 80-76213-6 Zuerich: Giles Baker.

The Famous Glacier Express of Switzerland. English. 64 pages 86 photos. SFr23.00/£9.70

Die Lok und Trieb der RhB: New edition renamed as Die Streckentriebfahrzeuge und Schneeschlensden der RhB. 160 pages. Order now, ready July. German. SFr25.00/£10.50

Schmalspurparadies Schweiz. German with English summaries
Vol 1: Berner Oberland, Jura West Schweiz. 178 pages 210 photos. SFr62.60/£26.30

Vol 2: Basel, Mittelland, Tessin, Nordostschweiz, Graubunden. SFr62.60/£26.30

Catalogues
Book, Poster and Slide catalogues 15p each
All 4 available for 4 international reply coupons.

Stickers
Loco 11103, 10101 or a sheet containing 10103 and 11 freight wagons. 20p each
Please include an SAE (25p) (minimum 9" x 4") with all communications except book orders

Sales Officer: Giles Baker, 2 Anderson Road, Weybridge, Surrey. KT13 9NL
Tel: Weybridge (0932) 51056.