

Scotland shows the Swiss flag

Autor(en): **Horspool, G.B.**

Objektyp: **Article**

Zeitschrift: **Swiss express : the Swiss Railways Society journal**

Band (Jahr): **1 (1986-1987)**

Heft 7

PDF erstellt am: **18.09.2024**

Persistenter Link: <https://doi.org/10.5169/seals-853690>

Nutzungsbedingungen

Die ETH-Bibliothek ist Anbieterin der digitalisierten Zeitschriften. Sie besitzt keine Urheberrechte an den Inhalten der Zeitschriften. Die Rechte liegen in der Regel bei den Herausgebern.

Die auf der Plattform e-periodica veröffentlichten Dokumente stehen für nicht-kommerzielle Zwecke in Lehre und Forschung sowie für die private Nutzung frei zur Verfügung. Einzelne Dateien oder Ausdrucke aus diesem Angebot können zusammen mit diesen Nutzungsbedingungen und den korrekten Herkunftsbezeichnungen weitergegeben werden.

Das Veröffentlichen von Bildern in Print- und Online-Publikationen ist nur mit vorheriger Genehmigung der Rechteinhaber erlaubt. Die systematische Speicherung von Teilen des elektronischen Angebots auf anderen Servern bedarf ebenfalls des schriftlichen Einverständnisses der Rechteinhaber.

Haftungsausschluss

Alle Angaben erfolgen ohne Gewähr für Vollständigkeit oder Richtigkeit. Es wird keine Haftung übernommen für Schäden durch die Verwendung von Informationen aus diesem Online-Angebot oder durch das Fehlen von Informationen. Dies gilt auch für Inhalte Dritter, die über dieses Angebot zugänglich sind.

"Ticket to the Top" is a well illustrated guide and reference book to some of the transport systems in the Bernese Oberland - rack railways, funiculars, cable cars and chair lifts are all featured.

The useful up to date travel information is well supplemented with statistical details and historical facts. 64 pages fully illustrated with maps and photographs, several of which are in colour. Available from M.G. Cooling, Flat C, 55 Harrington Gardens, London SW7 4JZ. U.K. price £4.50 including postage (add £1 for overseas). (above reviews by S.E. Staff).

Walking in Switzerland by Brian Spencer, Moorland Publishing Co. Ltd. ISBN 0 86190 152 5 £4.95

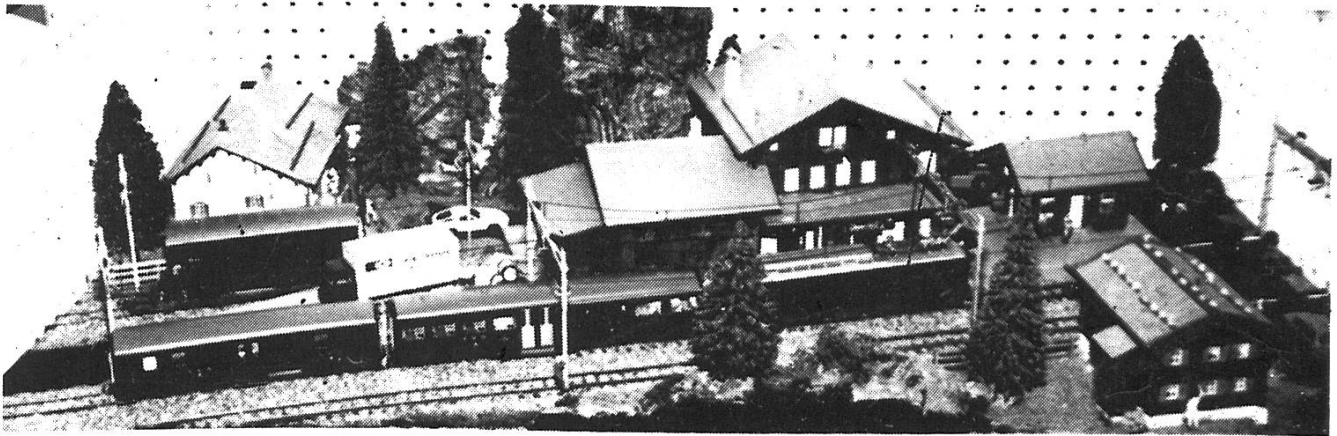
This handy book will make a valuable addition to the library of anyone who loves the scenery of Switzerland. It describes a total of 80 walks based on 10 centres, and gives for each a broad description, particular points of interest, and route instructions. The routes are categorised as easy, moderate or strenuous, and distance and walking times are given for each, as well as major height differences. No climbing is involved, but care is needed at some places.

Each centre has a short preamble describing the area, and giving the relevant Landeskarte der Schweiz map number(s). An introduction describes how to use the book, and makes some general comments on walking in the mountains and safety.

I suppose it is inevitable that a couple of railway-orientated errors have been spotted. One describes the Rhaetian Railway as a 'cog railway', while one of the walks which starts from the Furkablick Hotel shows the nearest station as Furka Halt, which has been closed since the opening of the Furka base tunnel.

The book has only recently been published, and I have not yet had a chance to sample any of the walks, but I hope to fit in a couple in the Autumn as a change from watching trains. (above review by John Jesson)

SCOTLAND SHOWS THE SWISS FLAG by G.B. Horspool



Portable display built by Ron Provan and Graham Horspool. Photo Author.

The Annual Scottish Model Railway Exhibition - organised by the Association of Model Railway Societies in Scotland and held in Glasgow in early March for the past many years has always been characterised by a distinct lack of exhibits with a European bias and, particularly by a total lack of anything to do with Swiss Railways.

In 1984 Ron Provan and myself decided to begin to put matters right by arranging a static display of Swiss Railway models. Accordingly, a small well illuminated showcase was built within which adjustable shelves are used to illustrate the many facets of the Swiss Model Railway Scene.

The showcase is augmented at exhibitions by a T.V. monitor and video recorder on which are shown video films of the Swiss Railway network. Each year, promotional material kindly made available by the Swiss National Tourist Office in London completes the display. Our efforts, represent a modest attempt to publicise the Society to Scots railway enthusiasts. There is, hopefully, more and better to come !!!