

Zeitschrift: Swiss express : the Swiss Railways Society journal
Herausgeber: Swiss Railways Society
Band: 6 (2000-2002)
Heft: 10

Artikel: Discovering the Centovalli
Autor: Stevenson, David
DOI: <https://doi.org/10.5169/seals-854967>

Nutzungsbedingungen

Die ETH-Bibliothek ist die Anbieterin der digitalisierten Zeitschriften. Sie besitzt keine Urheberrechte an den Zeitschriften und ist nicht verantwortlich für deren Inhalte. Die Rechte liegen in der Regel bei den Herausgebern beziehungsweise den externen Rechteinhabern. [Siehe Rechtliche Hinweise.](#)

Conditions d'utilisation

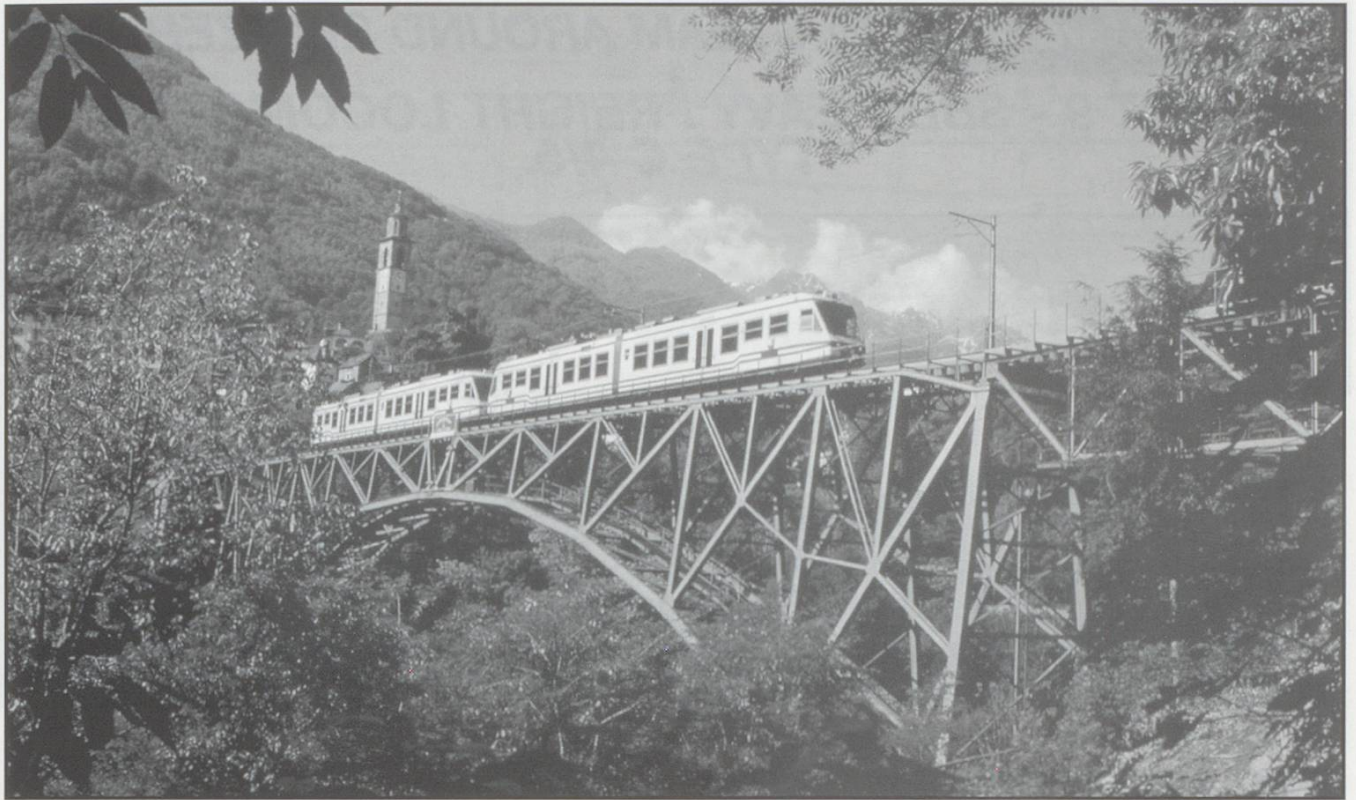
L'ETH Library est le fournisseur des revues numérisées. Elle ne détient aucun droit d'auteur sur les revues et n'est pas responsable de leur contenu. En règle générale, les droits sont détenus par les éditeurs ou les détenteurs de droits externes. [Voir Informations légales.](#)

Terms of use

The ETH Library is the provider of the digitised journals. It does not own any copyrights to the journals and is not responsible for their content. The rights usually lie with the publishers or the external rights holders. [See Legal notice.](#)

Download PDF: 27.12.2024

ETH-Bibliothek Zürich, E-Periodica, <https://www.e-periodica.ch>



David Stevenson

DISCOVERING THE CENTOVALLI

The first in a series of suggestions on travelling in Ticino. Ticino is a delight, a sunny warm climate, Italian influences, beautiful lakes, I could go on. Many of us ignore it but just look at what you may be missing, and this is just the start.

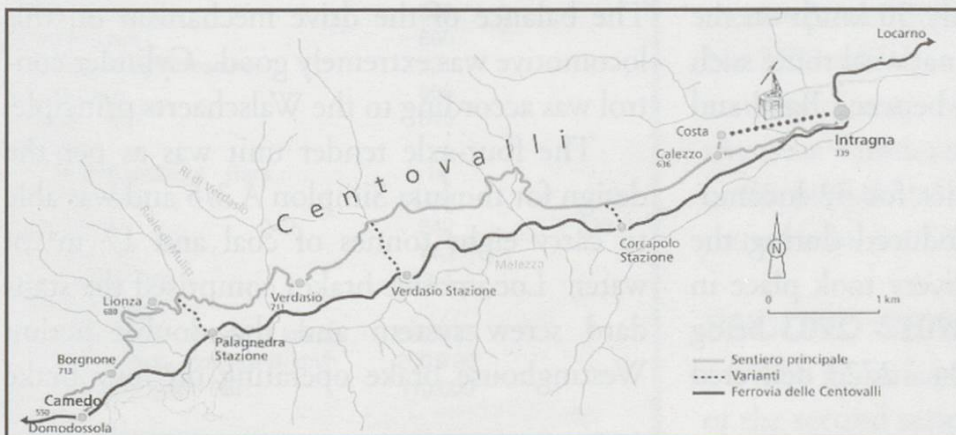
From whichever end, Domodossola or Locarno, take the Centovalli train to Camedo on the Italian frontier. As I have indicated so many times it is a fascinating and wild trip along gorges and over impressive viaducts.

From Camedo enjoy a spectacular view during the breathtaking walk from Camedo to Intragna, through the romantic Valley of the hundred Valleys (CENTOVALLI!). A short walk takes you from Camedo to Borgnone and to Lionza, from where one can follow a mule path to the hamlet of Verdasio and to Intragna. From there, the Centovalli train will

return you back to Locarno or Domodossola. There is even the possibility of a cable car ride from Costa to Intragna. albeit downhill! The walk is designed to start at Camedo as it is downhill most of the way.

There are some variations on the journey. The entire walk is estimated to take about five hours so should you become tired or not have enough time there are various points along the route which take you down to a different station, check for times, naturally. Fortunately there is at least an hourly service on the Swiss side. Restaurants are situated in Camedo, Borgnone, Lionza, Costa and Intragna. The

substantial middle portion appears to be refreshmentless so take some water. Ticino is much warmer on average than the rest of Switzerland. Finally do purchase a map locally as this just an outline.



ABOVE: A Centovalli train crosses the spectacular viaduct at Intragna. Photo©TicinoTourism