

**Zeitschrift:** Swiss express : the Swiss Railways Society journal  
**Band:** - (2010)  
**Heft:** 102  
  
**Rubrik:** Photo gallery

### **Nutzungsbedingungen**

Die ETH-Bibliothek ist die Anbieterin der digitalisierten Zeitschriften. Sie besitzt keine Urheberrechte an den Zeitschriften und ist nicht verantwortlich für deren Inhalte. Die Rechte liegen in der Regel bei den Herausgebern beziehungsweise den externen Rechteinhabern. [Siehe Rechtliche Hinweise.](#)

### **Conditions d'utilisation**

L'ETH Library est le fournisseur des revues numérisées. Elle ne détient aucun droit d'auteur sur les revues et n'est pas responsable de leur contenu. En règle générale, les droits sont détenus par les éditeurs ou les détenteurs de droits externes. [Voir Informations légales.](#)

### **Terms of use**

The ETH Library is the provider of the digitised journals. It does not own any copyrights to the journals and is not responsible for their content. The rights usually lie with the publishers or the external rights holders. [See Legal notice.](#)

**Download PDF:** 13.10.2024

**ETH-Bibliothek Zürich, E-Periodica, <https://www.e-periodica.ch>**



# PHOTO GALLERY



CGTE Fe 4/4 151 (1910) at Blonay on 29/9/09. This tram will be celebrating its centenary this year.

PHOTO: Peter Mann

Seeking mushrooms - found tram! The rescued tram is carefully guided onto some temporary rails. See 'Romande Reports' Page 36.

PHOTO: Blonay-Chamby Museum Railway





# PHOTO GALLERY



BDeh 2/4 73 (1970) at Les Pléiades CEV on 29.9.09. It was in use on the top section while track work was carried out below with a bus connection between Fayaux and Lally. PHOTO: Peter Mann  
Though now unable to get to Switzerland, Mr Mills wondered why this MOB wagon was at Les Pléiades on CEV? PHOTO: J W Mills



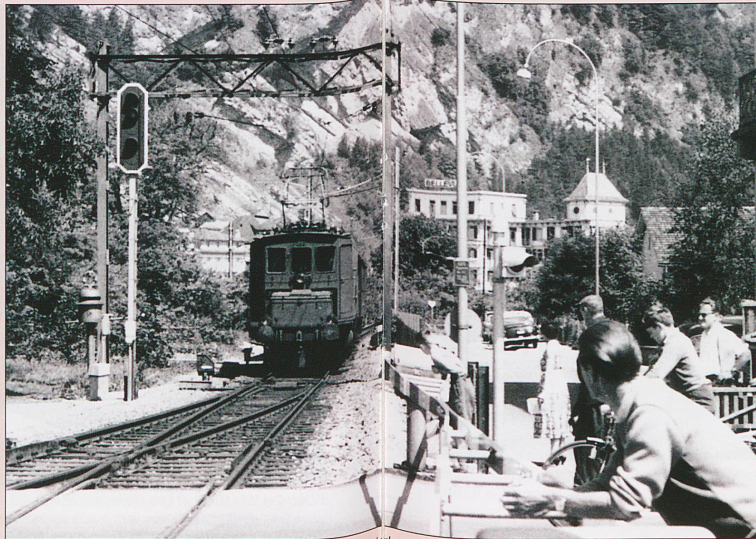




Publicity guru, Roger Ellis at Eurotrack, Eastleigh last February. PHOTO: Barry Emmott

Tram No 20 is seen at Montreux en route to Vevey in the summer of 1955.

PHOTO: Graham Allen



In the summer of 1958, a train from Spiez approaches Interlaken West.

PHOTO: Graham Allen



ETR610 on test passing through Vevey station on 2/10/09. PHOTO: Peter Mann

Barry Garside's first Swiss picture of De 6/6 15302 at Emmenbrücke on 13/8/1982.





# PHOTO GALLERY



Can anyone name the location and class of this locomotive?

PHOTO: Graham Allen

WAB He 2/2 No 34 has a short freight train in Wengen.

PHOTO: Chris Webb





# PHOTO GALLERY



*BCFeh 4/4 15 (1909) being unceremoniously returned to Martigny-Chatelard from Blonay-Chamby!  
Taken in Vevey on 2.10.2009.*

PHOTO: Peter Mann

*Brienzi Rothorn Bahn No 6 simmers at Brienz ready for its climb.*

PHOTO: Peter Allman

