

# Vierwaldstättersee postcard

Autor(en): **Marriott, Heidi**

Objektyp: **Article**

Zeitschrift: **Swiss express : the Swiss Railways Society journal**

Band (Jahr): - **(2014)**

Heft 117

PDF erstellt am: **05.08.2024**

Persistenter Link: <https://doi.org/10.5169/seals-854103>


## **Nutzungsbedingungen**

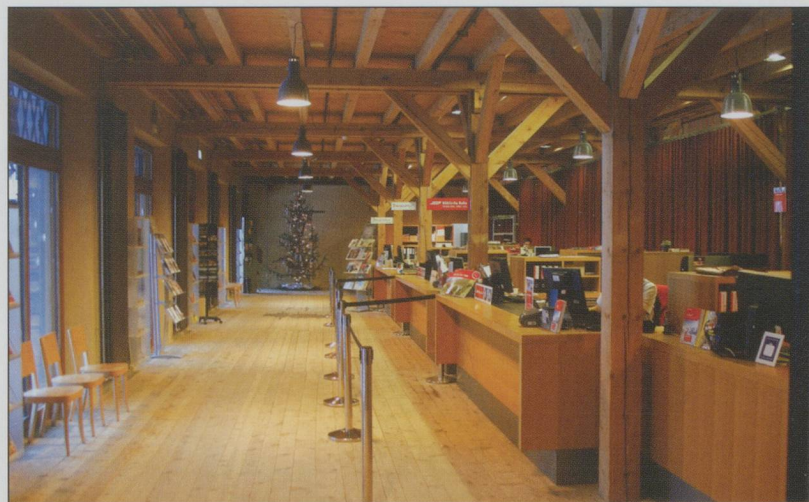
Die ETH-Bibliothek ist Anbieterin der digitalisierten Zeitschriften. Sie besitzt keine Urheberrechte an den Inhalten der Zeitschriften. Die Rechte liegen in der Regel bei den Herausgebern. Die auf der Plattform e-periodica veröffentlichten Dokumente stehen für nicht-kommerzielle Zwecke in Lehre und Forschung sowie für die private Nutzung frei zur Verfügung. Einzelne Dateien oder Ausdrucke aus diesem Angebot können zusammen mit diesen Nutzungsbedingungen und den korrekten Herkunftsbezeichnungen weitergegeben werden. Das Veröffentlichen von Bildern in Print- und Online-Publikationen ist nur mit vorheriger Genehmigung der Rechteinhaber erlaubt. Die systematische Speicherung von Teilen des elektronischen Angebots auf anderen Servern bedarf ebenfalls des schriftlichen Einverständnisses der Rechteinhaber.

## **Haftungsausschluss**

Alle Angaben erfolgen ohne Gewähr für Vollständigkeit oder Richtigkeit. Es wird keine Haftung übernommen für Schäden durch die Verwendung von Informationen aus diesem Online-Angebot oder durch das Fehlen von Informationen. Dies gilt auch für Inhalte Dritter, die über dieses Angebot zugänglich sind.

but also in English. Additional features include a massive Om gauge model of the railway (this is still a work-in-progress although well worth seeing) and the preserved RhB 'Krokodile' that formerly was located nearby in the village. In one of the cabs of this historic loco the museum has set up an electronic simulator that allows visitors to 'drive' it along the tracks of the RhB. As a follow-up to their successful first year the museum has recently been nominated by the European Museum Forum as one of three Swiss contenders for the European Museum of the Year Award-2014, that will be presented in May in Tallin, Estonia.

For people who study railways, and the RhB in particular; Canton Graubünden; the social fabric of once isolated alpine valleys; the development of the tourist trade in this part of Switzerland, and many other linked areas of interest, the museum is now a 'must see' destination. Admission, by Edmonson card ticket, is reasonably priced at CHF15, with children at CHF11. In 2014 it will be open until November when there will be a short winter break until mid-December. We were ably guided around the complex by Gion Caprez and his colleague Werner Haas, whom we thank for their kind hospitality. For more information go to [www.bahnmuseum-albula.ch](http://www.bahnmuseum-albula.ch) but better still – go there. 



TOP: RhB's ticket office. BOTTOM: the café and shop.

## VIERWALDSTÄTTERSEE POSTCARD

### Heidi Marriott

Searching through some old postcards in Totnes on the Saturday before Christmas, I found, amongst a collection of Swiss cards, the one reproduced here. Showing an early version of the well-known Swiss panoramic map, it looks out across the Vierwaldstättersee towards Fluelen. In the left foreground is Brunnen with a steamer loading at the quayside, but of more railway interest is the Brunnen-Morschach-Bahn climbing the mountain behind the town to Axenstein. Opened in 1905, this closed in 1969 to be replaced with a bus. Snaking its way along the lakeside is the Gotthardbahn heading through Fluelen and Erstfeld before disappearing behind the mountains. On the right can be seen the lakeside steamer stops at Rütli and Treib, where



the TSB funicular is shown heading up to Seelisberg. The date of the card is unknown as it was never written and posted, but the rear is printed with a stamp-square stating a 5 rappen stamp is required. The TSB opened in 1916 so the card is after this date, however if there is a philatelist out there who knows when that rate was valid it would

be good to know. This interesting find shows that it is sometimes worth scanning through the collections of old postcards you see in second-hand and charity shops in the hope that you might find a gem. By the way, in another such shop in the old coin tin (10p per coin), I also found six current Swiss coins with a value of almost CHF5. It pays to rummage!!! 