

Objektyp: **Advertising**

Zeitschrift: **Swiss express : the Swiss Railways Society journal**

Band (Jahr): - **(2018)**

Heft 135

PDF erstellt am: **06.08.2024**

Nutzungsbedingungen

Die ETH-Bibliothek ist Anbieterin der digitalisierten Zeitschriften. Sie besitzt keine Urheberrechte an den Inhalten der Zeitschriften. Die Rechte liegen in der Regel bei den Herausgebern. Die auf der Plattform e-periodica veröffentlichten Dokumente stehen für nicht-kommerzielle Zwecke in Lehre und Forschung sowie für die private Nutzung frei zur Verfügung. Einzelne Dateien oder Ausdrucke aus diesem Angebot können zusammen mit diesen Nutzungsbedingungen und den korrekten Herkunftsbezeichnungen weitergegeben werden. Das Veröffentlichen von Bildern in Print- und Online-Publikationen ist nur mit vorheriger Genehmigung der Rechteinhaber erlaubt. Die systematische Speicherung von Teilen des elektronischen Angebots auf anderen Servern bedarf ebenfalls des schriftlichen Einverständnisses der Rechteinhaber.

Haftungsausschluss

Alle Angaben erfolgen ohne Gewähr für Vollständigkeit oder Richtigkeit. Es wird keine Haftung übernommen für Schäden durch die Verwendung von Informationen aus diesem Online-Angebot oder durch das Fehlen von Informationen. Dies gilt auch für Inhalte Dritter, die über dieses Angebot zugänglich sind.

Ein Dienst der *ETH-Bibliothek*
ETH Zürich, Rämistrasse 101, 8092 Zürich, Schweiz, www.library.ethz.ch

<http://www.e-periodica.ch>



Hotel Garni Bellaval Bergün

In the heart of the UNESCO World Heritage section of the Rhaetian Railway in Switzerland

- Scenic view of the world-famous Bernina Express and Glacier Express trains
- Next to the Railway Adventure Trail Albula with numerous viaducts, tunnels and bridges
- Walking distance from the Albula Railway Museum
- Close to the world-famous Landwasser Viaduct
- Located in the picturesque and traditional village of Bergün
- In the centre of Parc Ela – the largest nature park in Switzerland

Special offer for railway enthusiasts

- 7 Nights in Double Room for only CHF 610 per person
Including breakfast, 5 days unlimited travel on the Rhaetian Railway, free entry to the Albula Railway Museum as well as the large model railway in the historical museum.

Please check our Web-Site for further information and interesting offers!

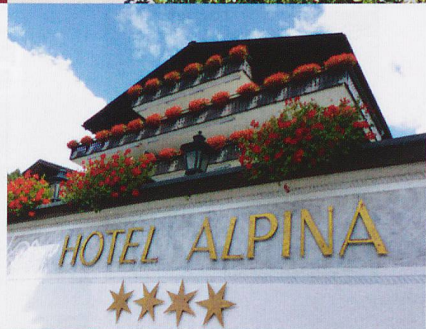
Homepage: www.bellaval.com
 Contact: bellaval@berguen.ch
 Phone: +41 81 407 12 09

Hotel Alpina
 at the Klosters Platz
 Railway Station

★★★★ hotel klosters · swiss alpine lifestyle



- Best view and position for railway enthusiasts!
- Situated directly at the Klosters Platz railway station – but quiet and relaxing.
- Cozy rooms overlooking the Rhaetian Railway line Landquart – Vereina/Davos.
- Wonderful spa with sauna and indoor pool.
- During summer season 2018 free breathtaking ride on nostalgic railway coaches and open scenic carriages pulled by the legendary «Crocodile» locomotive from Davos, over the famous Wiesen Viaduct, to Filisur (home to the Landwasser Viaduct, UNESCO World Heritage Site).
- In summer free use of all public cable cars with the Davos Klosters Card.

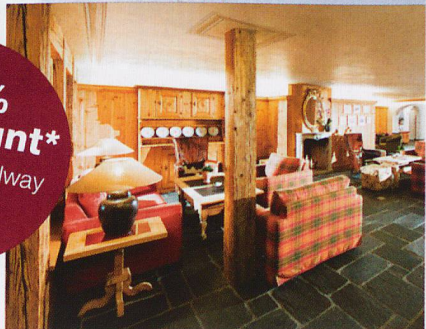


ALPINA

**** Hotel Alpina, Bahnhofstrasse 1, CH-7250 Klosters
 Tel. +41 (0)81 410 24 24, hotel@alpina-klosters.ch
www.alpina-klosters.ch, www.facebook.com/alpinaklosters

* direct bookings only, minimum stay of 2 nights, non-refundable rate, holidays excluded

15% Discount*
 for Swiss Railway
 Society
 members.





SOCIETY SALES



ALL SORTS OF THINGS SRS

NEW SRS 2019 CALENDAR – available soon - order now as supplies are limited. UK **£10.00**

Rest of the World, by Surface mail **£13.50**

NEW SBB Electric Locomotives – Past and Present

by Martin Fisher – A4 book which describes the evolution of Swiss electric locomotive design from the very beginning to the present day, 124 pages – reviewed in June edition of *Swiss Express*. **£16.00**

Swiss Lakes - Their Scenery and Ships by Martin Fisher - A4 book about Switzerland's Lakes, lakeside communities and the ships that sail on them, 140 pages with almost 400 colour photographs **£17.00**

NEW SRS Logo Pin Badge: **£2.75**

Reduced Price Society Tie: Polyester **£5.00**

SRS Stickers: self adhesive for external fixing - pack of three **£1.50**

SRS Mug **£7.00**

SRS Cotton Shopper Bags with SRS Logo - free with orders over £50 **£4.00**

Swiss Express Binders - A4 **£10.00** - **A5** **£7.00**

REDUCED - Industrial Railways & Locomotives of Switzerland by Richard A Bowen *Now only* **£25.00**

Swiss Travel Guides by Martin Fisher **£7.00** each

NEW Vol 1 - Bern and the Bernese Oberland - Revised edition with more pages and some new photos.

Vol 2 - Lake Geneva and the Rhône Valley - New revised edition with more pages and some new photos.

Vol 3 - The Route of the Glacier Express

Vol 4 - Lake Luzern and Surrounding Area

Vol 5 - The Ticino

Vol 6 - Gräbunden – New revised edition with more pages and some new photographs.

Vol 7 - Zürich and North East Switzerland

NEW Vol 8 - Basel and North West Switzerland - Revised edition with more pages and some new photos.

Swiss Trams and Trolleybuses by Martin Fisher - Revised second edition now in A4 with more archive photos and live tram route maps. Reviewed in the June 2017 issue of *Swiss Express*. **£14.50**

Mountain Climbing the Easy Way by Martin Fisher A4 size - 120 pages and almost 400 colour photographs. Reviewed in the March 2017 issue of *Swiss Express*. **£16.00**

Swiss Postbuses by Martin Fisher reviewed in June 2016 issue of *Swiss Express*. 210mm x 210m, 108 pages. **£14.50**

Swiss Railway Motive Power by Martin Fisher - reviewed in the December 2015 issue of *Swiss Express*. 210mm x 210mm 96 pages **£12.00**

Swiss Photo Guides No. 1

Photographing the Gotthard by John Jesson **£5.00**

The BLS Today - 100 years of the Lotschberg Line (now including the 100 year Celebrations) by Roger Kemp **£5.00**

Swiss Railways - Six Decades of Change by Philp J Kelley. Hardback, 200 pages, 450 photographs in colour and monochrome. (Reviewed in December 2014 *Swiss Express*) **£30.00**

Modelling European Railways by Peter Marriott – reviewed in the June 2016 issue of *Swiss Express*, 224 pages with many colour photographs - soft back **£20.00**

On Landlocked Seas – Vol. 2 Principal Swiss and French Alpine Lakes by Brian Pattern – reviewed in this issue of *Swiss Express* **£17.00**

Swiss Express: back issues from 2017 only available as a set of 4 **£10.00**

All other back issues pre 2017 (most are still available) **£2.00** each or **£7.00** for 4

Also available on CD Rom in JPEG format A5 magazines including Swiss Railway News per volume **£6.00**

NOW IN PDF FORMAT - Feature Articles from Swiss Express including Swiss Signalling on CD Rom **£5.00**

CLOTHING - ALL WITH SRS LOGO (Usually available from stock) All Clothing Prices Redued

Fleeces unlined – available in Red (L). *Now only* **£18.00**

Tee Shirts: navy or white - available in navy (L, XL & XXL) and white (M & L) - available from stock. **£7.50**

Jumpers: navy V neck with embroidered SRS Logo - available from stock. Wool Blend **£32.50**

Sweatshirts: round neck, long sleeve, navy - **£18.00**

Polo Shirts: short sleeve, navy or red with SRS Logo **£17.50**

Baseball Caps – Navy with Red Peak and embroidered SRS Logo **£7.50**

Summer "Bucket" Hats: Reduced Price – Navy with red braiding and embroidered SRS Logo **£4.50**

When placing orders for above clothing please state chest size required

Exclusive to the Swiss Railways Society,

DVDs

Alan Snowdon's Archive DVD from the '60s

Vol. 1 - Gotthard & Zurich. **Vol. 2** - South of Berne. **Vol. 3** - Ici on parle Français. **Vol. 4** - Die Bunder Statbahn (RhB). **Vol. 5** - Meander Through The Mountains. **Vol. 6** - Cities and Days Out.

See Society website for the list of contents for the above DVDs.

Also "Ride the M.O.B. with Driver Beat Feller: - much more than a cab ride. **All £10** each

MITV DVDs

The society has in stock the full range of MITV DVDs and supplies them post free. For details see the Society Website.

Single DVDs £19.00 Jungfrau Doubles £31.00

VAN DEN BURG DVDs

All Van Den Burg DVDs are now available - most available from stock.

Berninabahn, Past and Present, Glacier Express and Bernina Express **£20.00** each

Contact **SRS Sales** for the price of Van Den Burg Cab Ride DVDs

Swiss Classic Trains Autumn Steam Journey over the Gotthard **£20.00**

PERREN FILMS DVDs

Cab Rides of every Swiss Line will be produced. We have all the DVDs in stock. Single DVDs are **£20.00** & double DVDs are **£35.00**

Please see www.fuehrerstandsmittfahrten.ch/ for more information. You can now buy Perren DVDs from the Society's On-line shop.

RhB III. This DVD covers the following routes: Disentis/Muster – Chur and Chur – Arosa. The price is **£20**

NEW Lötschberglinie. This DVD covers the following routes: Brig – Bern, Brig – Spiez (Bergstrecke), Hochtenn - Goppenstein (Linkes Gleis). The price is **£20**

All above prices include postage - UK only. Mail to other countries at COST surface or airmail.

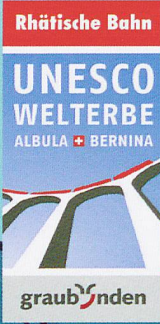
All payments in sterling - Cheques payable to: "THE SWISS RAILWAYS SOCIETY". Or by PayPal via the SRS Website and our new On-line Shop.

Please note that the prices shown in the On-Line shop are different to the prices shown here as the On-Line shop prices no longer include postage per item. If you are buying several items it will usually be cheaper to use the on-line shop or SRS Sales will quote you an accurate postage charge. You can buy from the On-Line shop and pay by PayPal or Cheque. Credit or Debit Card payments are also possible via a PayPal Invoice.

PLEASE SEND ALL POSTAL ORDERS TO:

Glyn Jones, SRS Sales, 13 Welland Close, Dalebrook, Winhill, Burton-on-Trent Staffs DE15 0AG
Email: sales@swissrailsoc.org.uk.

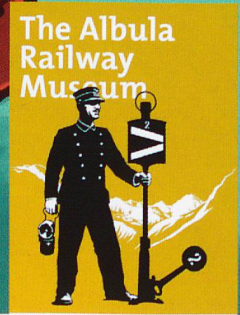
Please add your contact telephone number and Membership Number to help with any queries. If you are buying several items please contact SRS Sales first as we may be able to reduce the postage charges.



Visit the new Clà Ferrovia children's tour...!



«The Albula Railway Museum Bergün»



graubünden

Railway Mania!

The people, the valley and the world's most spectacular railway line. Not to mention the Crocodile Locomotive driving simulator. And for the kids, a «walk-in» tunnel full of unforgettable experiences.