

**Zeitschrift:** Swiss textiles [English edition]  
**Band:** - (1945)  
**Heft:** 3

**Artikel:** Embroideries, laces, handkerchiefs  
**Autor:** [s.n.]  
**DOI:** <https://doi.org/10.5169/seals-799088>

### **Nutzungsbedingungen**

Die ETH-Bibliothek ist die Anbieterin der digitalisierten Zeitschriften. Sie besitzt keine Urheberrechte an den Zeitschriften und ist nicht verantwortlich für deren Inhalte. Die Rechte liegen in der Regel bei den Herausgebern beziehungsweise den externen Rechteinhabern. [Siehe Rechtliche Hinweise.](#)

### **Conditions d'utilisation**

L'ETH Library est le fournisseur des revues numérisées. Elle ne détient aucun droit d'auteur sur les revues et n'est pas responsable de leur contenu. En règle générale, les droits sont détenus par les éditeurs ou les détenteurs de droits externes. [Voir Informations légales.](#)

### **Terms of use**

The ETH Library is the provider of the digitised journals. It does not own any copyrights to the journals and is not responsible for their content. The rights usually lie with the publishers or the external rights holders. [See Legal notice.](#)

**Download PDF:** 09.11.2024

**ETH-Bibliothek Zürich, E-Periodica, <https://www.e-periodica.ch>**

EMBROIDERIES, LACES,  
HANDKERCHIEFS





**Robert Piguet, Paris.**

*Opposite page :*

Evening gown in rose satin. The bodice is of embroidered organdie with small white lace and roses ; the cape is of rose satin.

*Above :*

Evening gown in embroidered St. Gall organdie.  
Coat of pale blue faille.

*Photos Georges Saad, Paris.*





1

Union S. A., St-Gall.

Tissus brodés.

Embroidered fabrics.

Tejidos bordados.

1 *Modèle Martial & Armand, Paris.*  
*Photo Georges Saad.*

2 *Modèle Lanvin, Paris.*  
*Photo Philippe Pottier.*

3 *Modèle Joseph Paquin, Paris.*  
*Photo Studio Lavoisier.*

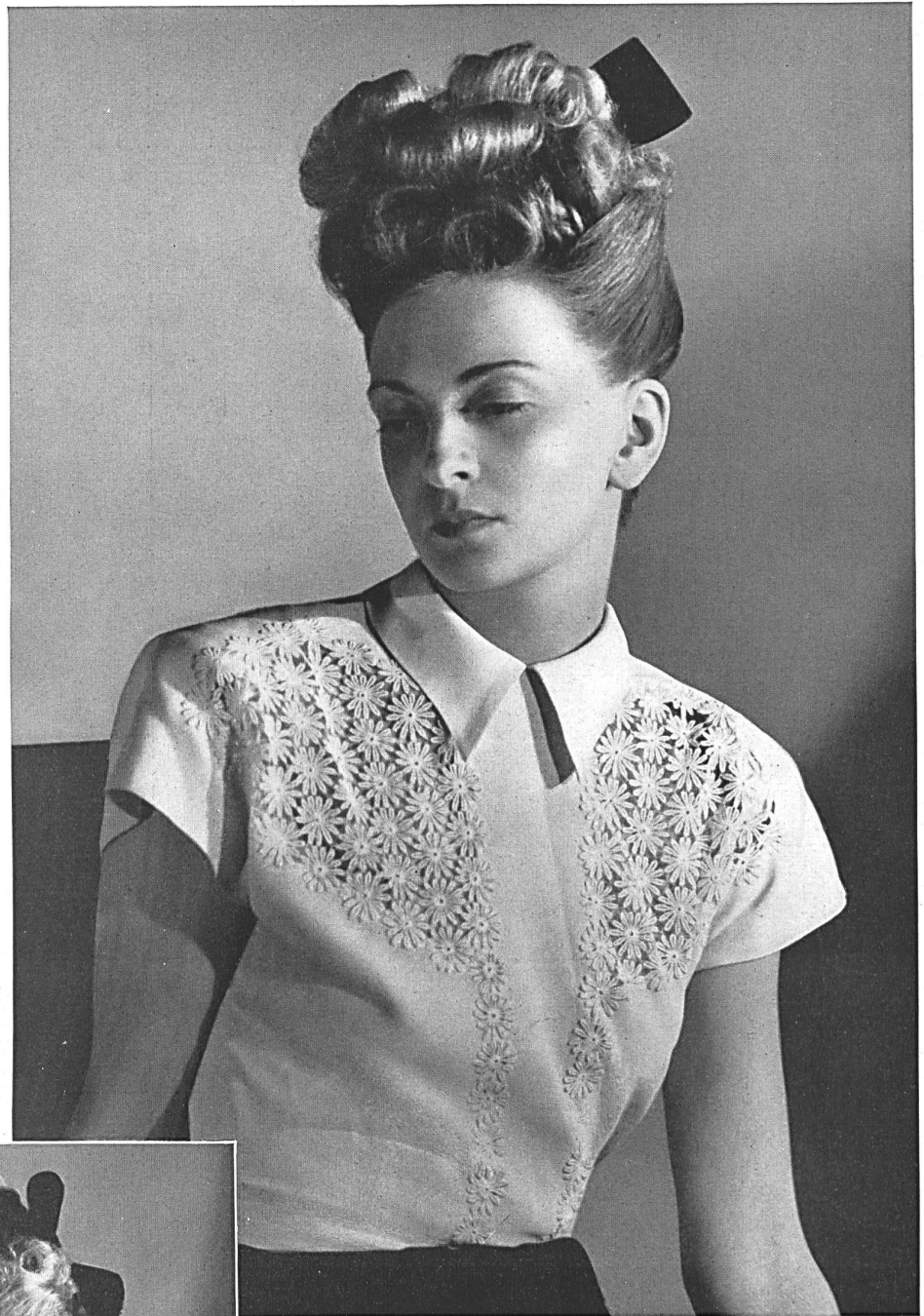


2



3





Union S. A., St-Gall.  
Dentelle.  
Lace.  
Encaje.  
*Modèle Nina Ricci, Paris.*  
*Photo Studio Lavoisier.*



**Union S. A., St-Gall.**

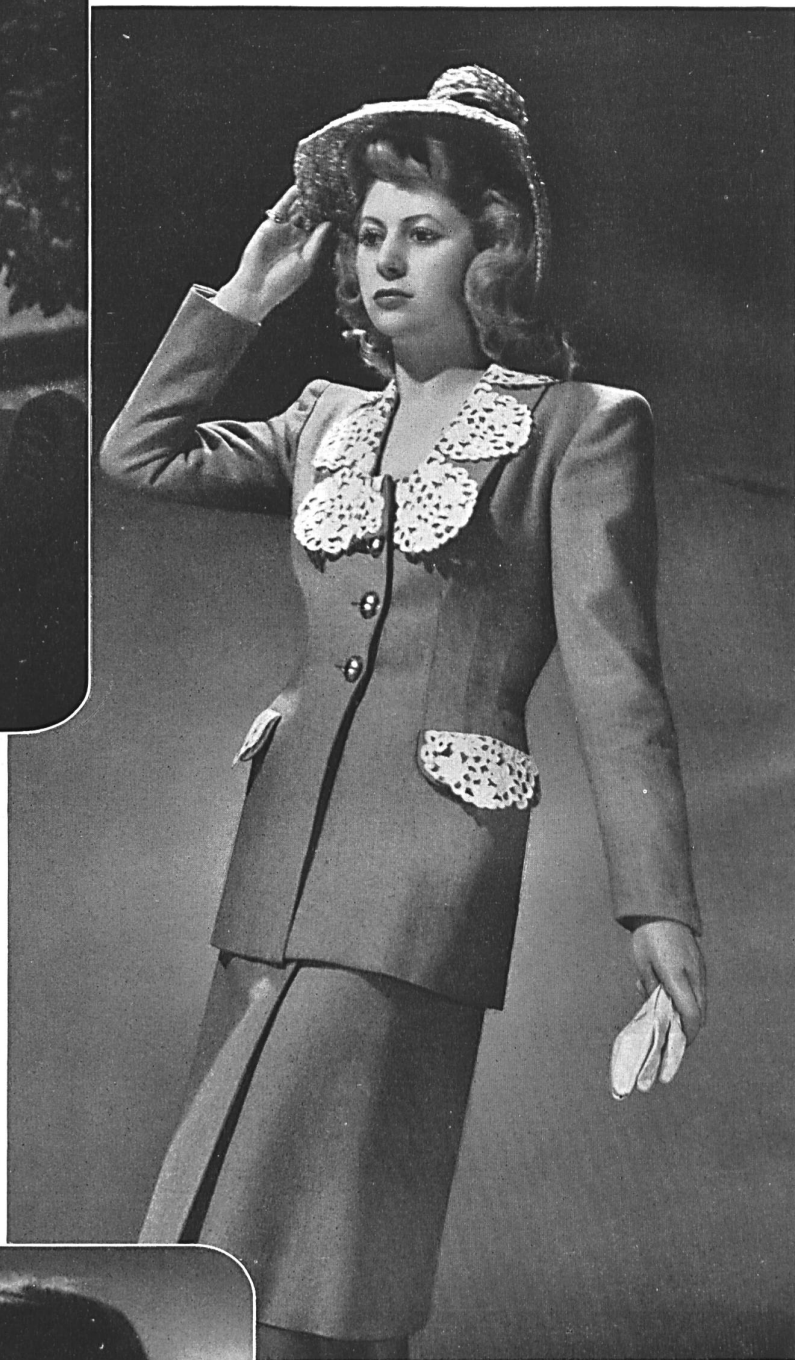
Tissu brodé.

Embroidered fabric.

Tejido bordado.

*Modèle Schiaparelli, Paris.*

*Photo Georges Saad.*



**A. Naef & Cie, Flawil.**

Guipure blanche.

White guipure.

Guipur blanco.

*Modèle Heim, Paris.*

*Photo Dorvyne.*



**A. Naef & Cie, Flawil.**

Dentelle.

Lace.

Encaje.

*Modèle Gaston, Paris.*

*Photo Studio « Les Médailles ».*





Walter Schrank & Cie, St-Gall.

Classic and modern laces.

S. T. Studio.





Neuburger & Cie S. A.,  
St-Gall.

Lace, embroidered organdie  
and insertion.

*S. T. Studio.*

Altoco S. A., St-Gall.  
Embroidered muslin.  
*S. T. Studio.*

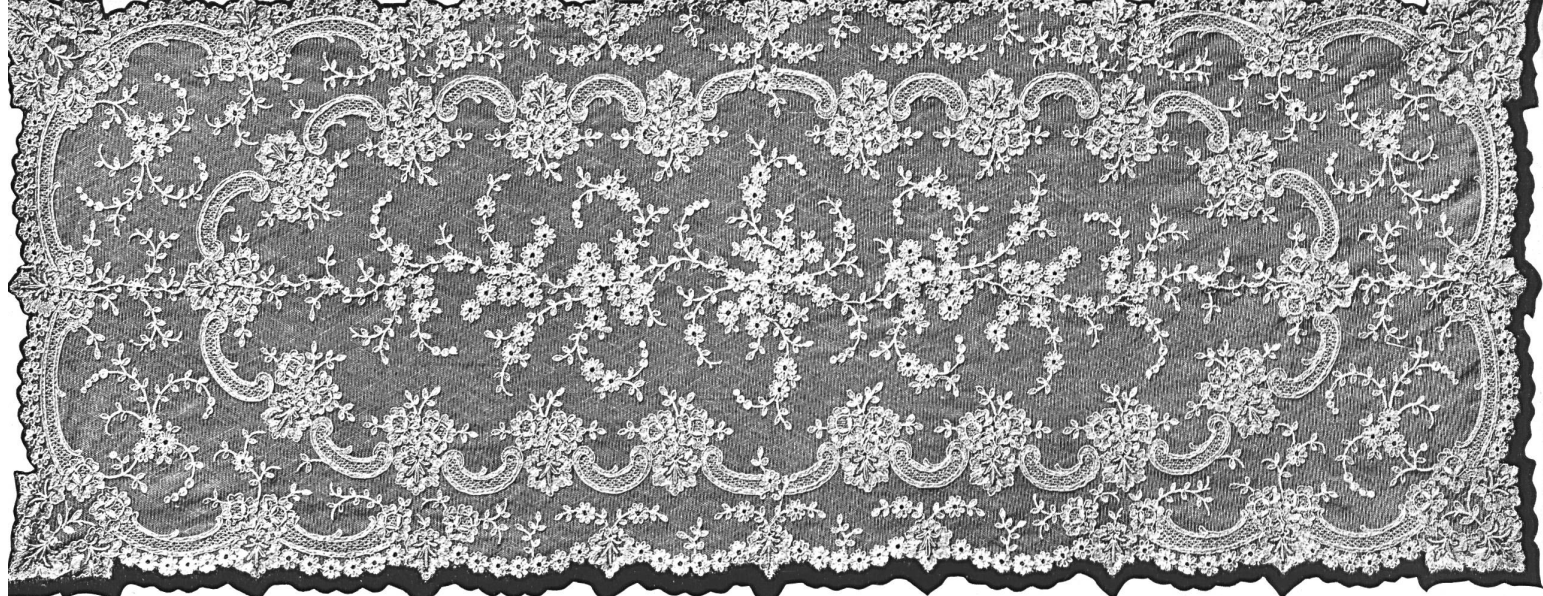


Stoffel & Cie, St-Gall.

There is always something new in the magnificent  
« STOFFELS » Handkerchief Collection.

*Photo Bischof.*

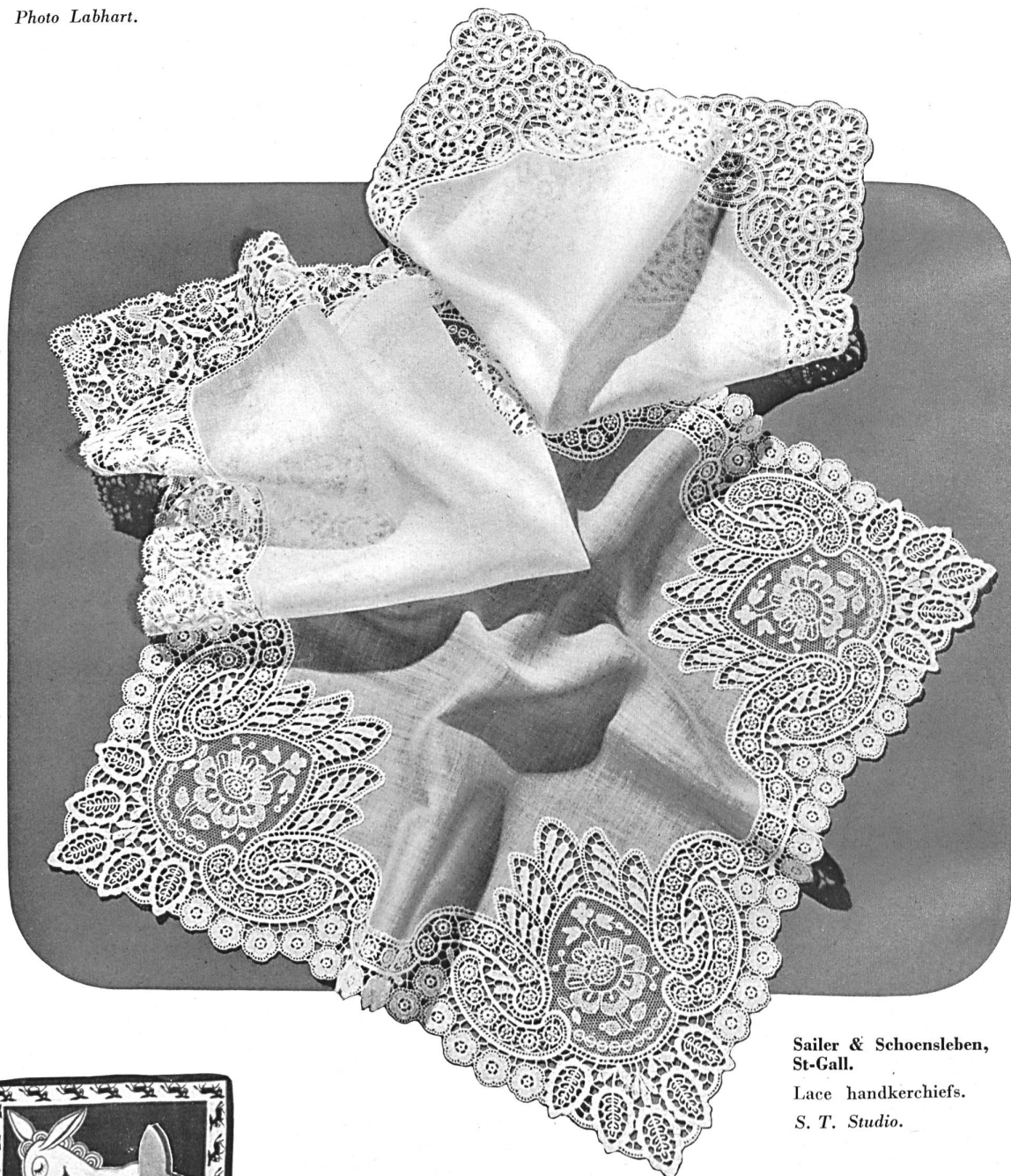
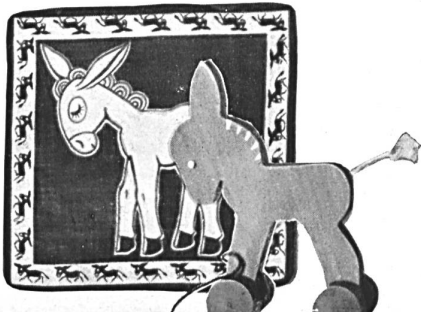
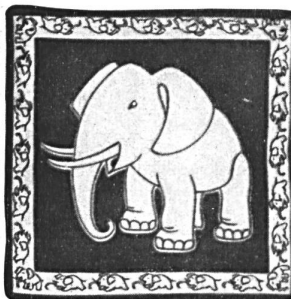




E. Mettler-Muller S. A., Rorschach.

Net table-runner.

Photo Labhart.



Sailer & Schoensleben,  
St-Gall.

Lace handkerchiefs.  
S. T. Studio.

J. Kreier-Baenziger's Erben, St-Gall.

Printed handkerchiefs for the kiddies from the  
« KREIER HANDKERCHIEF » Collection.

Photo Steinmann.



**P. Messmer & Cie, St. Gall.**

Some charming handkerchiefs,  
both plain and lavishly decorated.  
A selection showing the range of  
manufacture.

*S. T. Studio.*

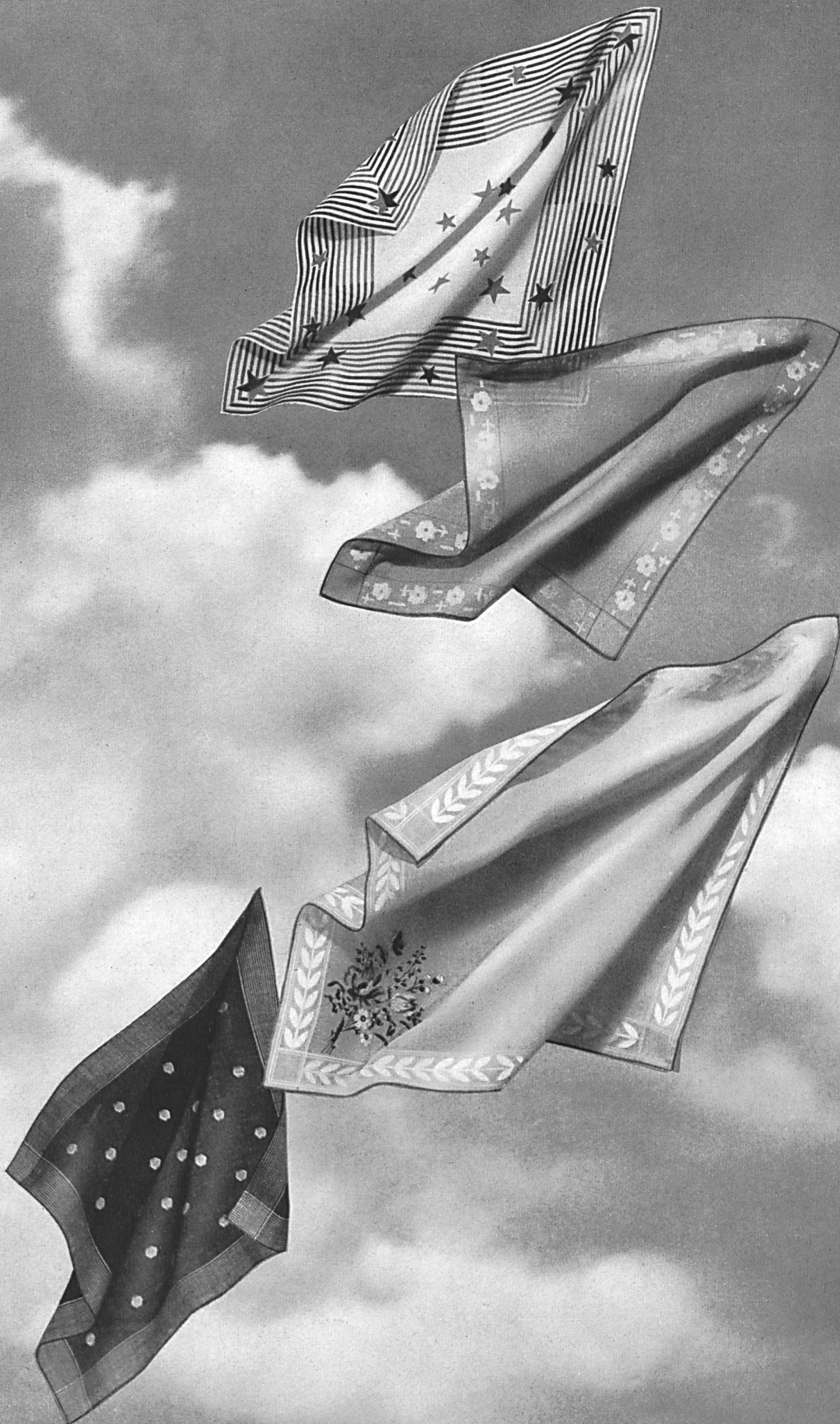


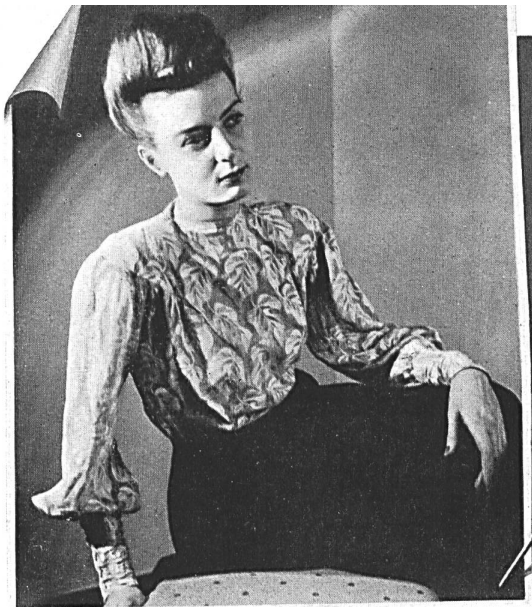


Joseph Heeb S. A., Appenzell.

A selection of novelties from the «HEEB HANDKERCHIEF»  
Collection : clipped-cords, printed, embroidered.

*Atelier Nuber.*





**Jul. Michel & Cie, Zurich.**

*Top left:* Blouse fabric with «LIME LEAVES» Design  
(A souvenir of Zurich).

*Bottom right:* A J. R. Polla model, Zurich.

Fabric with «SOUTHERN SEAS» Design. S. T. Studio.



Manufacture des montres  
DOXA S. A., Le Locle.  
S. T. Studio.

