

**Zeitschrift:** Swiss textiles [English edition]  
**Band:** - (1956)  
**Heft:** 3

**Artikel:** A model collection of footwear  
**Autor:** [s.n.]  
**DOI:** <https://doi.org/10.5169/seals-798616>

### **Nutzungsbedingungen**

Die ETH-Bibliothek ist die Anbieterin der digitalisierten Zeitschriften. Sie besitzt keine Urheberrechte an den Zeitschriften und ist nicht verantwortlich für deren Inhalte. Die Rechte liegen in der Regel bei den Herausgebern beziehungsweise den externen Rechteinhabern. [Siehe Rechtliche Hinweise.](#)

### **Conditions d'utilisation**

L'ETH Library est le fournisseur des revues numérisées. Elle ne détient aucun droit d'auteur sur les revues et n'est pas responsable de leur contenu. En règle générale, les droits sont détenus par les éditeurs ou les détenteurs de droits externes. [Voir Informations légales.](#)

### **Terms of use**

The ETH Library is the provider of the digitised journals. It does not own any copyrights to the journals and is not responsible for their content. The rights usually lie with the publishers or the external rights holders. [See Legal notice.](#)

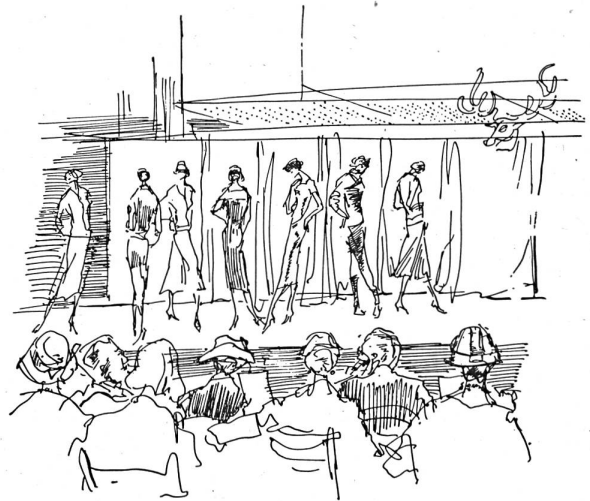
**Download PDF:** 19.11.2024

**ETH-Bibliothek Zürich, E-Periodica, <https://www.e-periodica.ch>**

# *A model collection of footwear*

Twice a year, the *Bally's Shoe Factories Ltd., Schönenwerd*, presents its new collection to the press. This is always an eagerly awaited fashion event : in fact, the importance of the firm, the prestige it enjoys on foreign markets, the part played by exports in its economy and the care it devotes to the creation of new models make each season's collection the model for what will be worn in the way of footwear by women, men and children, in classical and fancy styles for daily use, the street, travelling, week-ends, holidays and sport, dancing and evening wear. Always on the lookout for new ideas with regard to shapes and colours, new finishes and original leathers, Bally adopts and adapts for its customers, who are to be found all over the world, whatever is suitable in the different footwear trends for use by the general public or a select few.

During the course of this presentation, consisting of an exhibition and a fashion parade accompanied by an interesting commentary, we noticed the following general trends : an increased emphasis on slender lasts with finely tapered toes, the appearance of greater length due to the narrower toes being offset by the heels which are finer and more underset ; the dull-look is one of this season's fashion headlines ; black is given fresh interest by the new types of leather ; taupe, a blend of brown with grey, has come into the fashion picture ; in the current collection the decorative effect is mainly inspired by the last and the cut of the shoe, except for evening shoes which are richly decorated with rhinestones or iridescent beads, while heels are made of light metal. Let us note too the importance given to shoes for teenagers, children (whose shoes



must fit perfectly), skiing and mountaineering. In this last connection it should also be mentioned that Bally equipped the Swiss expeditions which conquered Lhotse and made the second ascent of Everest.

*Modèles BALLY déposés*

